
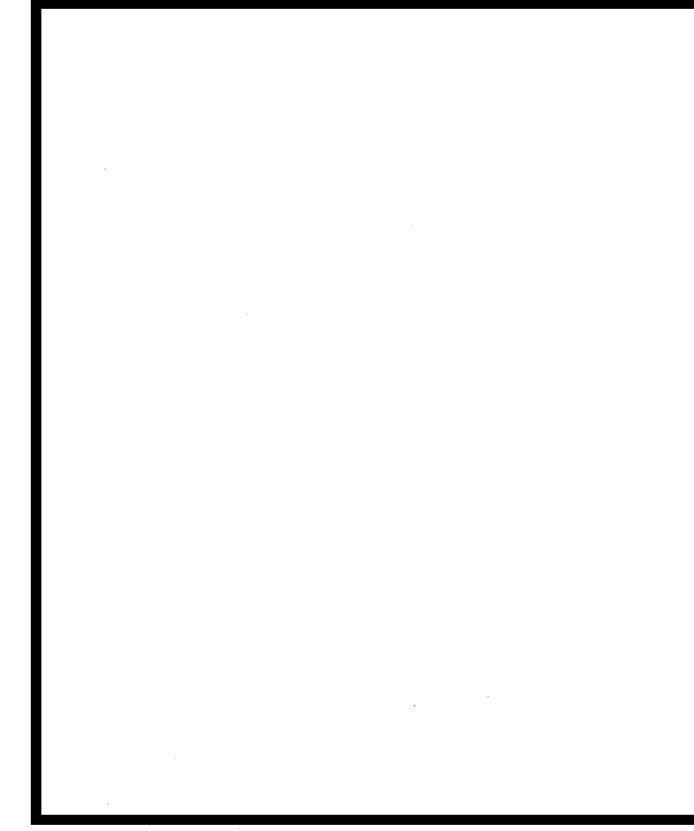


Project Title
**MAINE MEDICAL CENTER
HVAC, LAB
RENOVATIONS**
PORTLAND, MAINE

HA Project No. 08101

Key Plan

Mark	Date	Description
-	10-31-08	ISSUED FOR BID
-	10-10-08	75% REVIEW
Issue Dates		

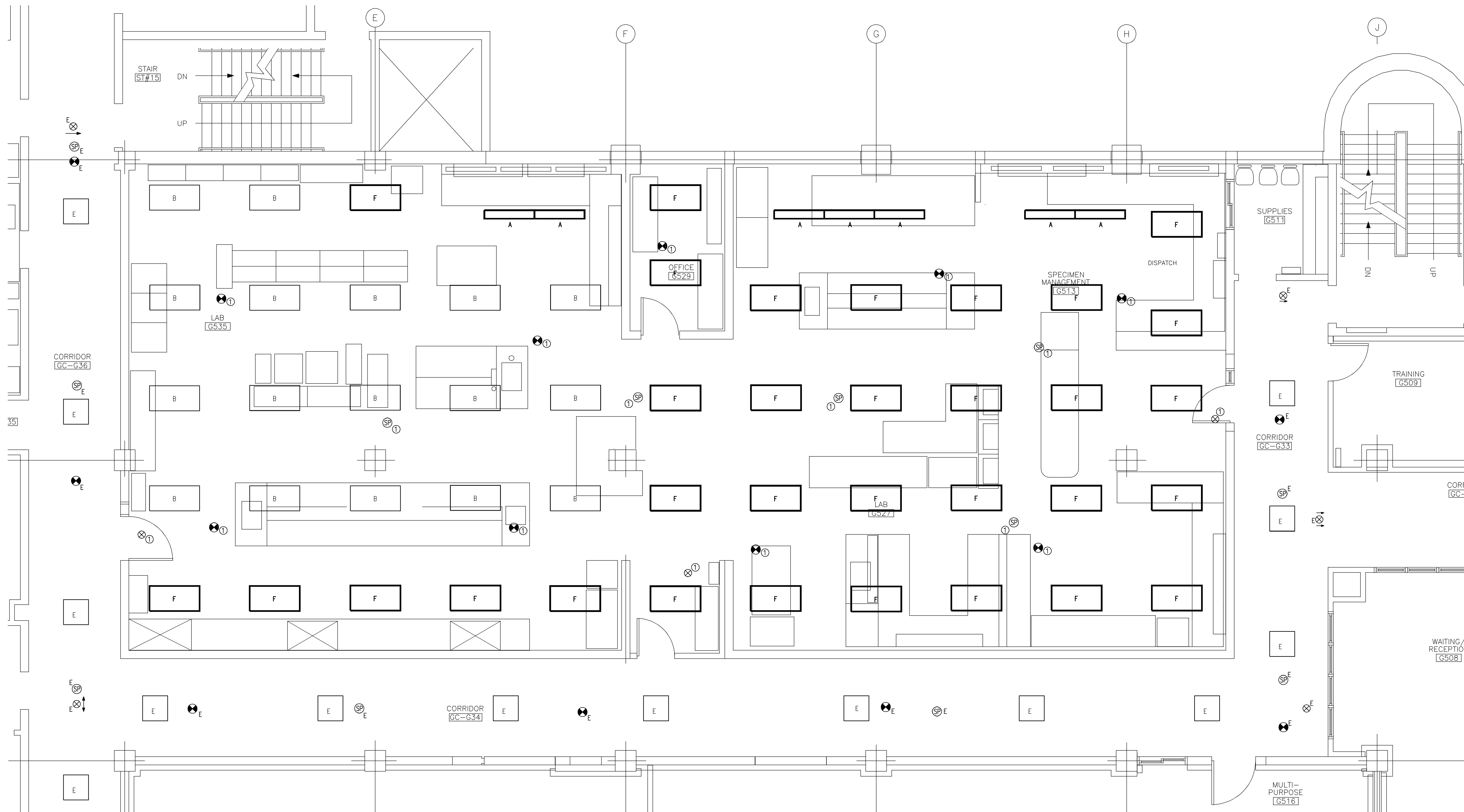
Drawing Status

Drawing Title
**ELECTRICAL
NEW LIGHTING
FIRST FLOOR PLAN**

PA / PE: WRH Drawn By: RJB

Drawing Number

E10.1



LIGHTING FIXTURE SCHEDULE									
PROVIDE ALL FIXTURES WITH COMPLETE HARDWARE, LAMPS, HANGERS, FITTINGS, ETC. FOR A COMPLETE AND PROPER MANUFACTURERS RECOMMENDED, UL INSTALLATION.									
TYPE	MANUFACTURER	CATALOG NO.	MTG.	VOLT	LAMPS			REMARKS/BALLAST INFORMATION	NOTES
					NO.	WATT	TYPE		
A	DIRECT/INDIRECT LINEAR PENDANT FINELITE-SERIES 5	S5-P-4'-2T8-SC-91W-120-FA-FE	P	120	2	32	32 WATT - T8	PROVIDE WITH "EFFICIENCY MAINE" BALLAST AND LAMP COMBINATION	②
B	EXISTING FIXTURE COLUMBIA	ZBT	R	120					①
F	OWNER PROVIDED FIXTURE COLUMBIA	ZBT	R	120				SEE DRAWING FOR QUANTITY	①

- LIGHTING FIXTURE SCHEDULE NOTES**
- ① PROVIDE ALL NECESSARY PARTS TO COMPLETE OWNER FURNISHED FIXTURES AND INCLUDE REMOVING AND RE-INSTALLING EXISTING FIXTURES.
 - ② MOUNT AT 96" AFF TO BOTTOM OF FIXTURE.

- GENERAL NOTES**
- 1. EXISTING CEILING TO BE REMOVED. CONTRACTOR SHALL FOLLOW PHASING OF PROJECT.
 - 2. CONNECT FIXTURES TO EXISTING CIRCUITS AND SWITCHES.