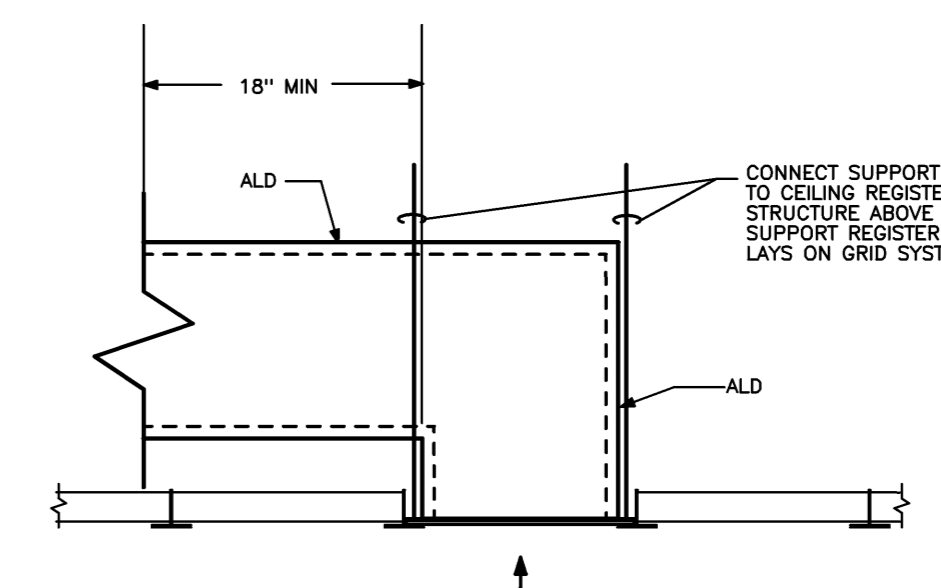
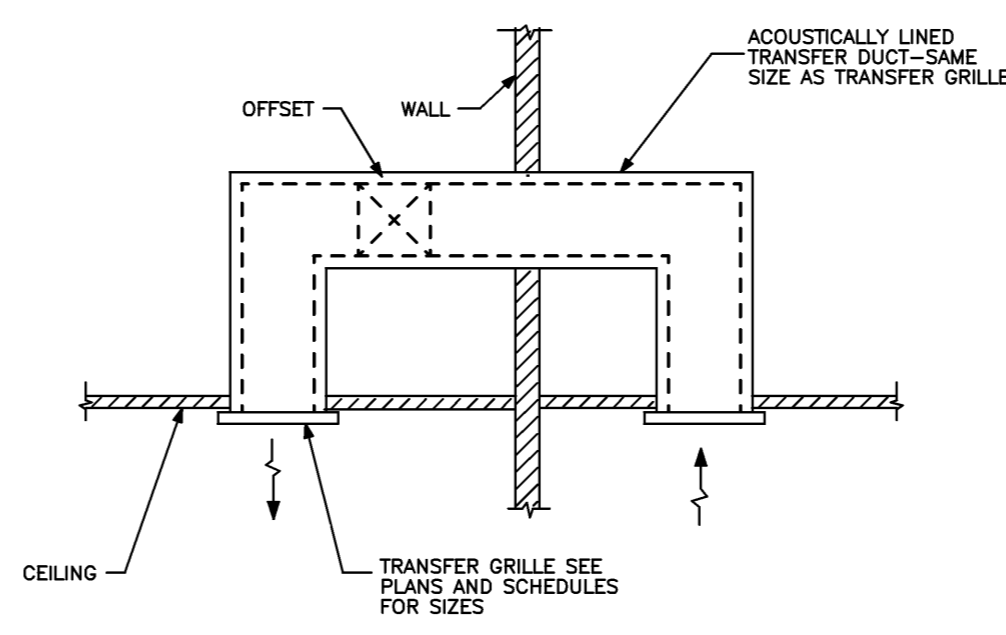
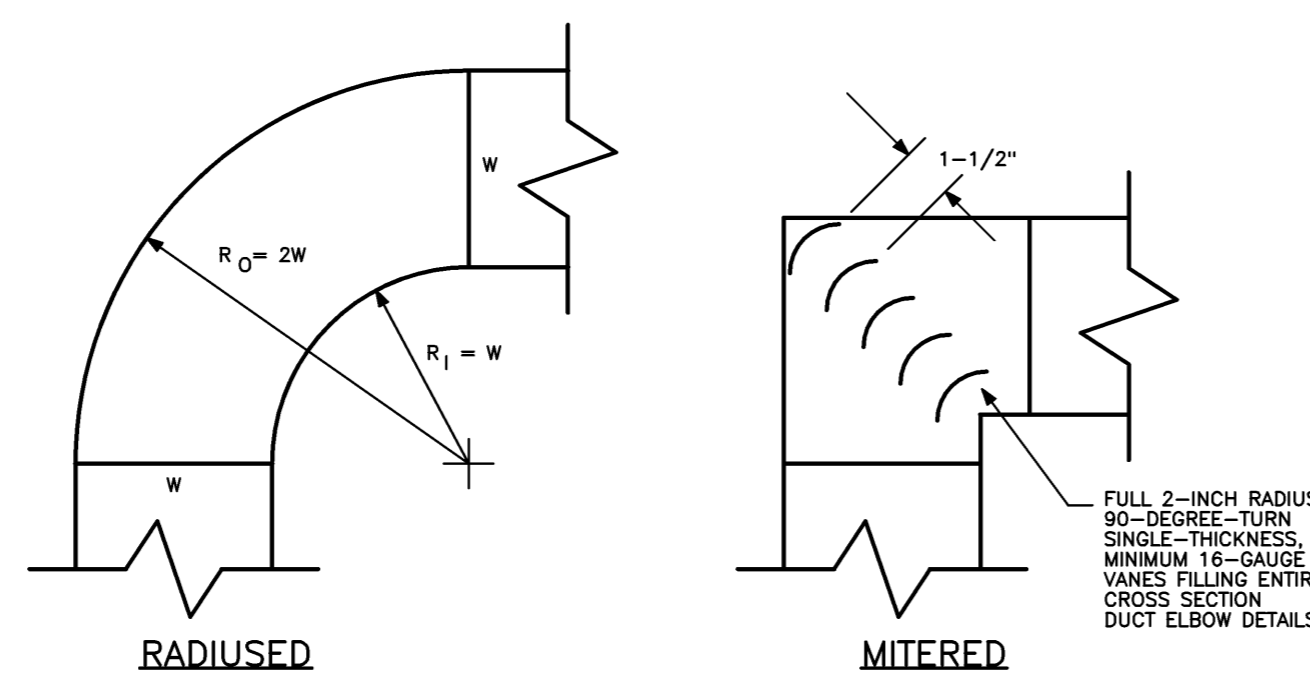
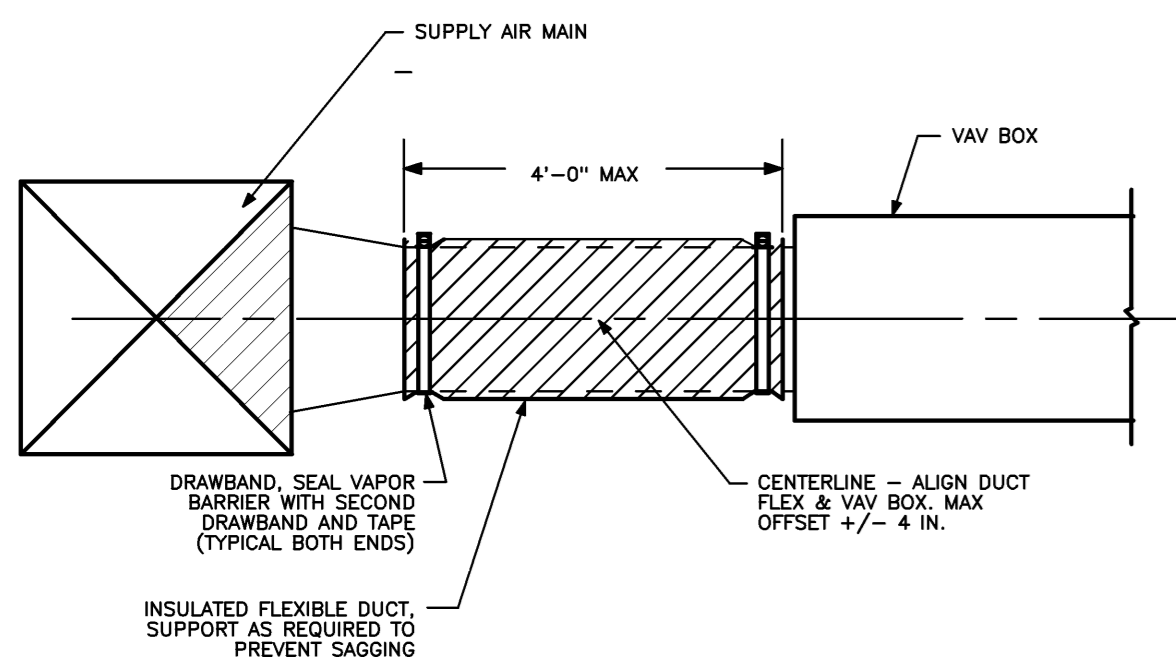


USE MITERED ONLY WHERE SPACE IS TOO TIGHT FOR RADIUS. WHERE SPACE ALLOWS, A HALF-RADIUSED ($R_1 = 1/2 W$) MAY BE USED INSTEAD OF MITERED.



TYPICAL VAV BOX CONNECTION DETAIL

DUCT ELBOW DETAILS

TRANSFER DUCT DETAIL

LAY-IN CEILING RETURN REGISTER MOUNTING DETAIL

NO SCALE REF: NA

NO SCALE REF: NA

NO SCALE REF: NA

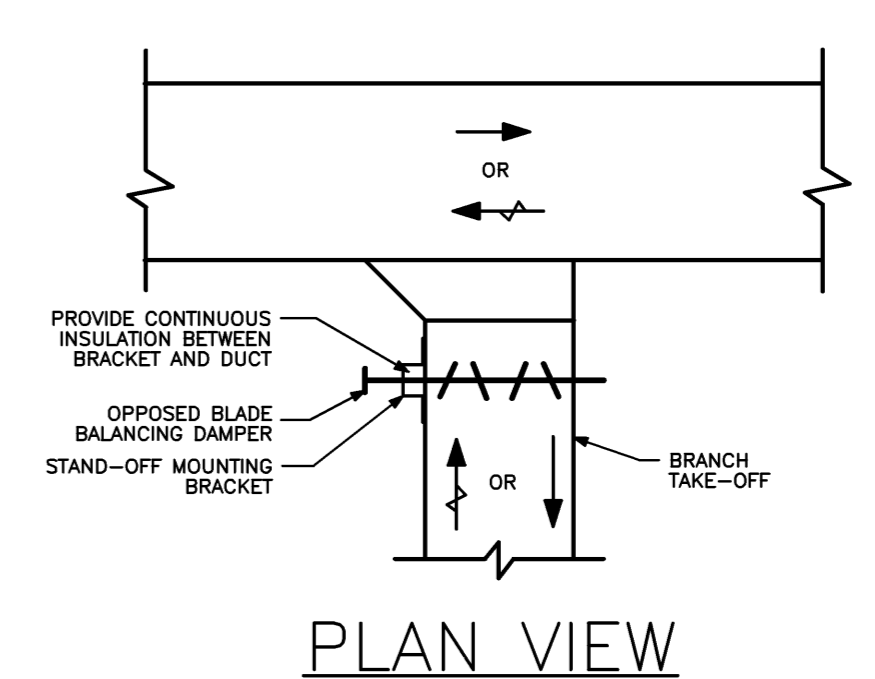
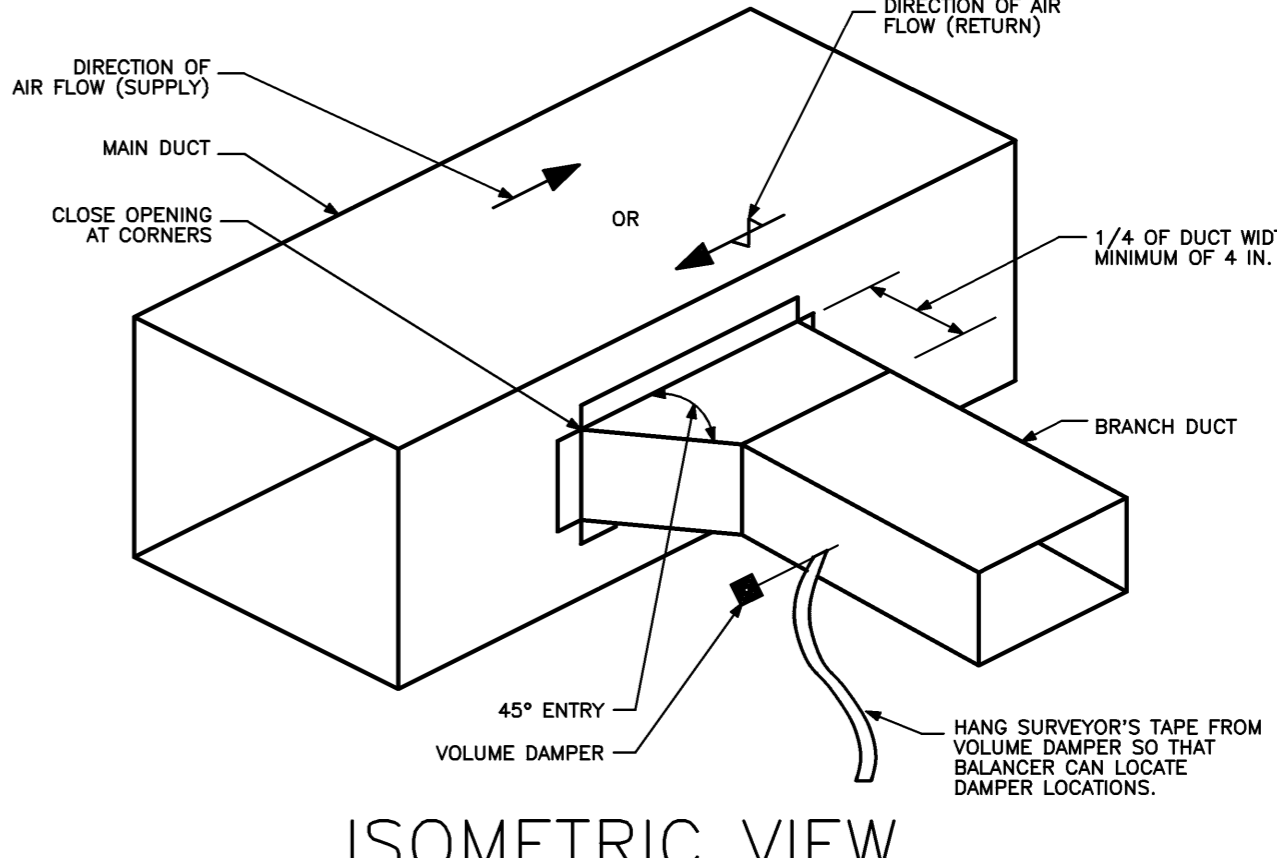
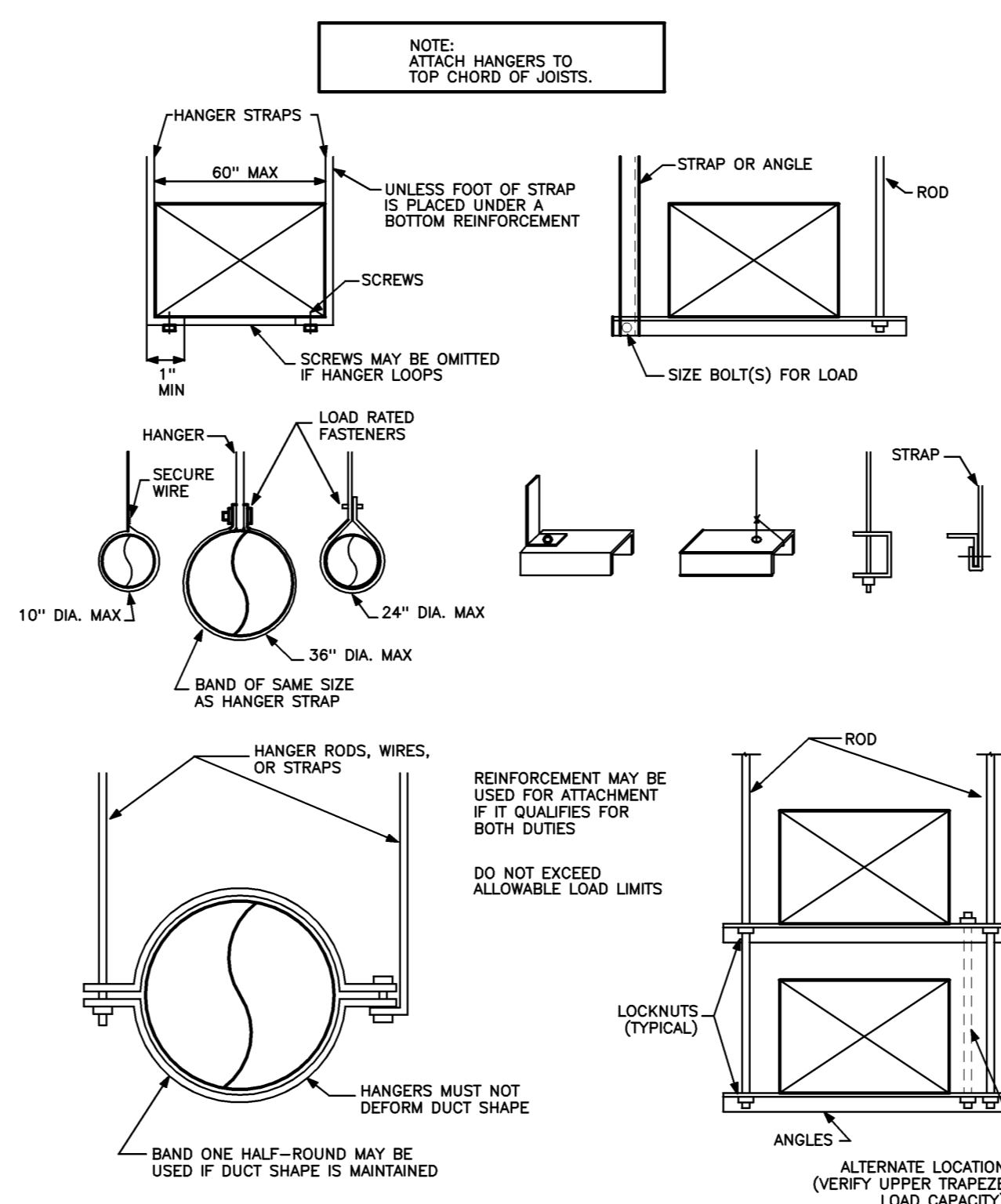
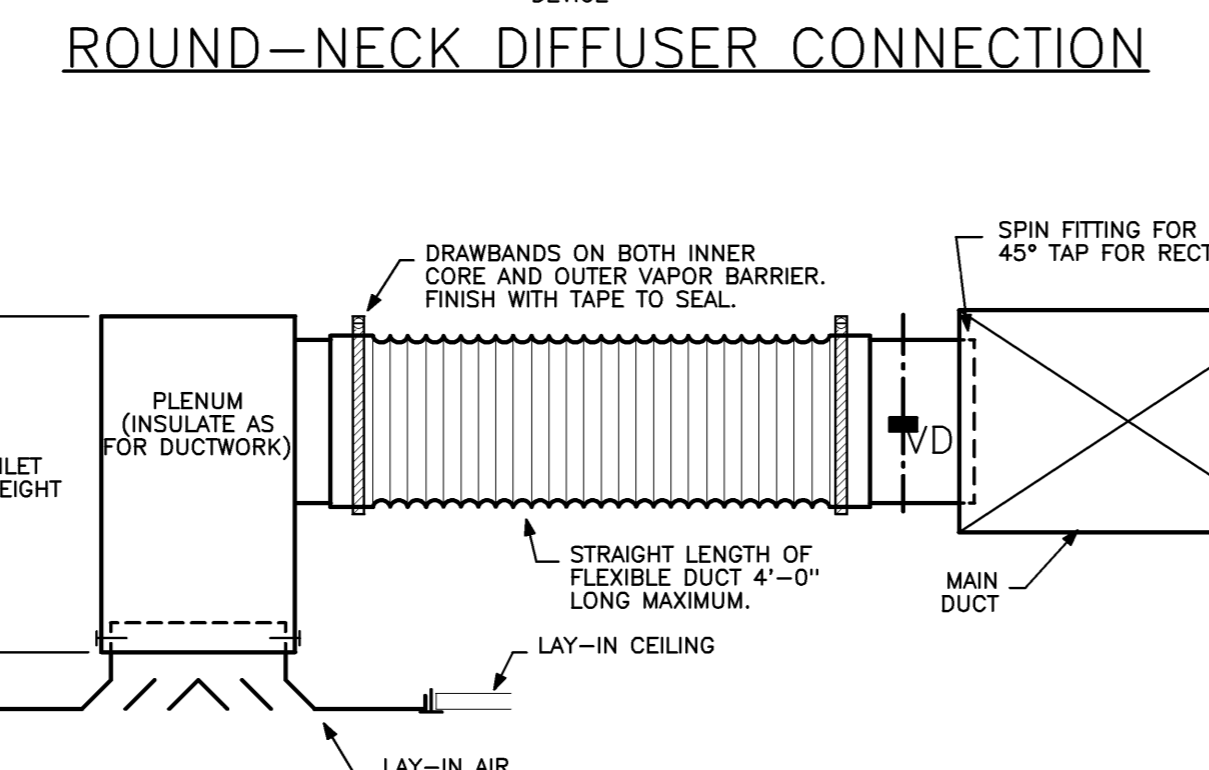
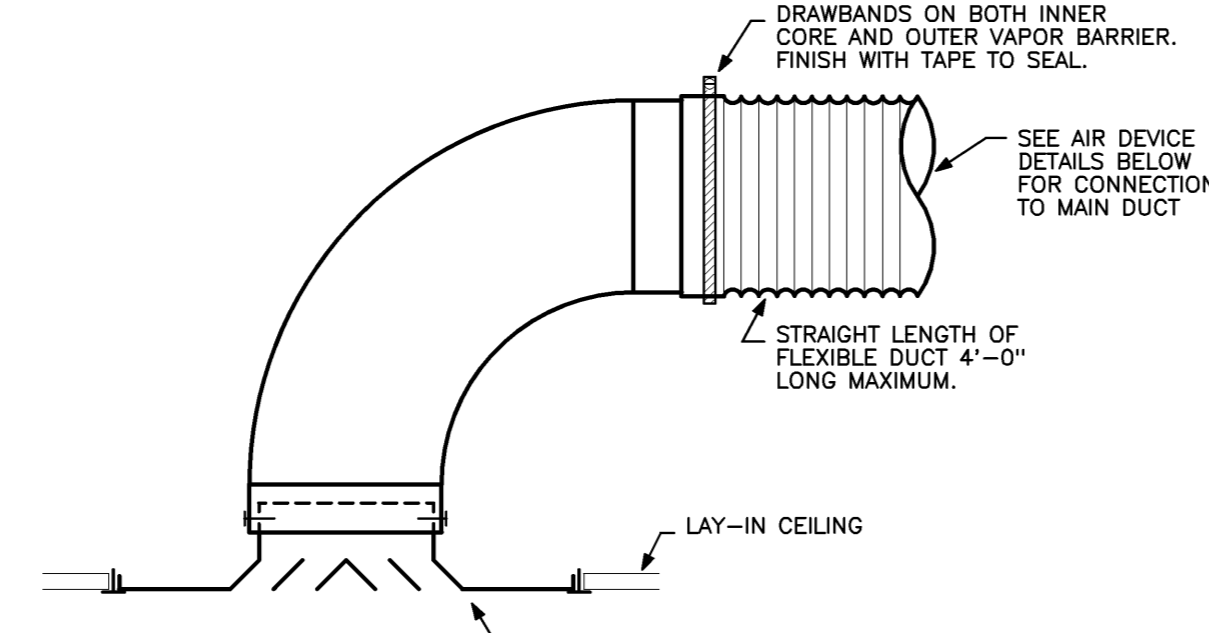
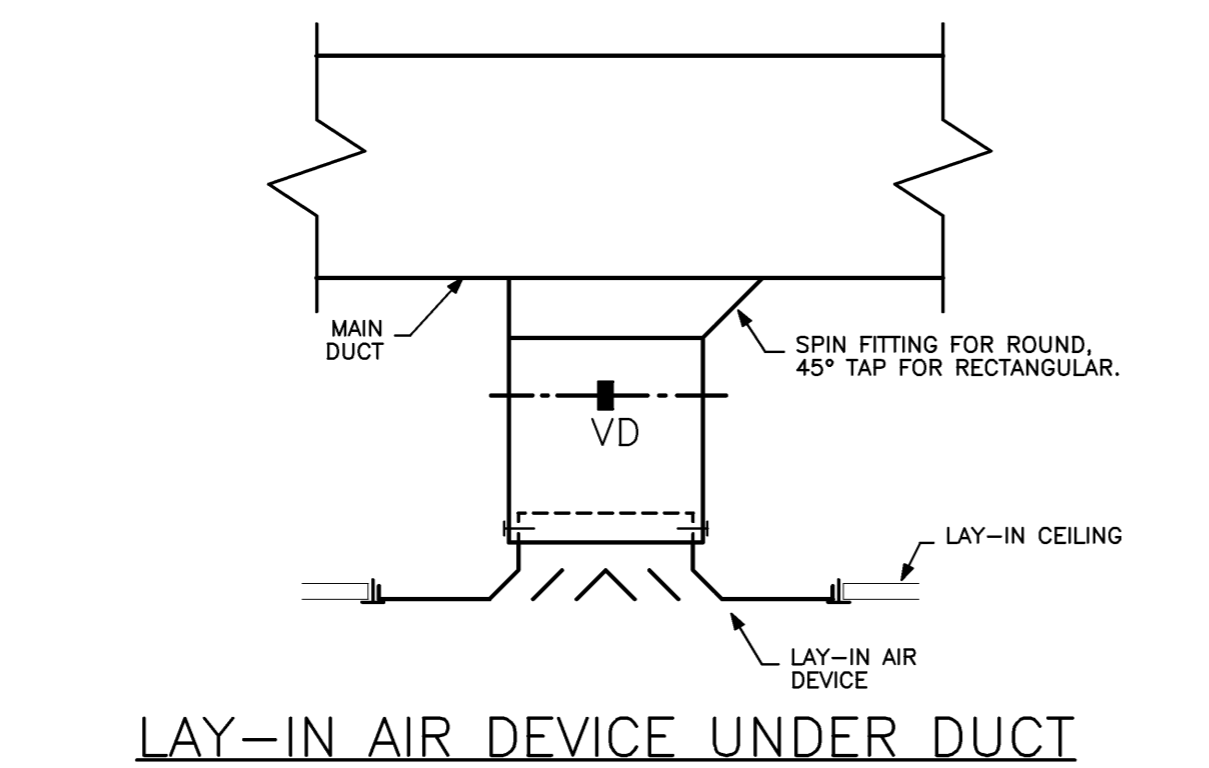
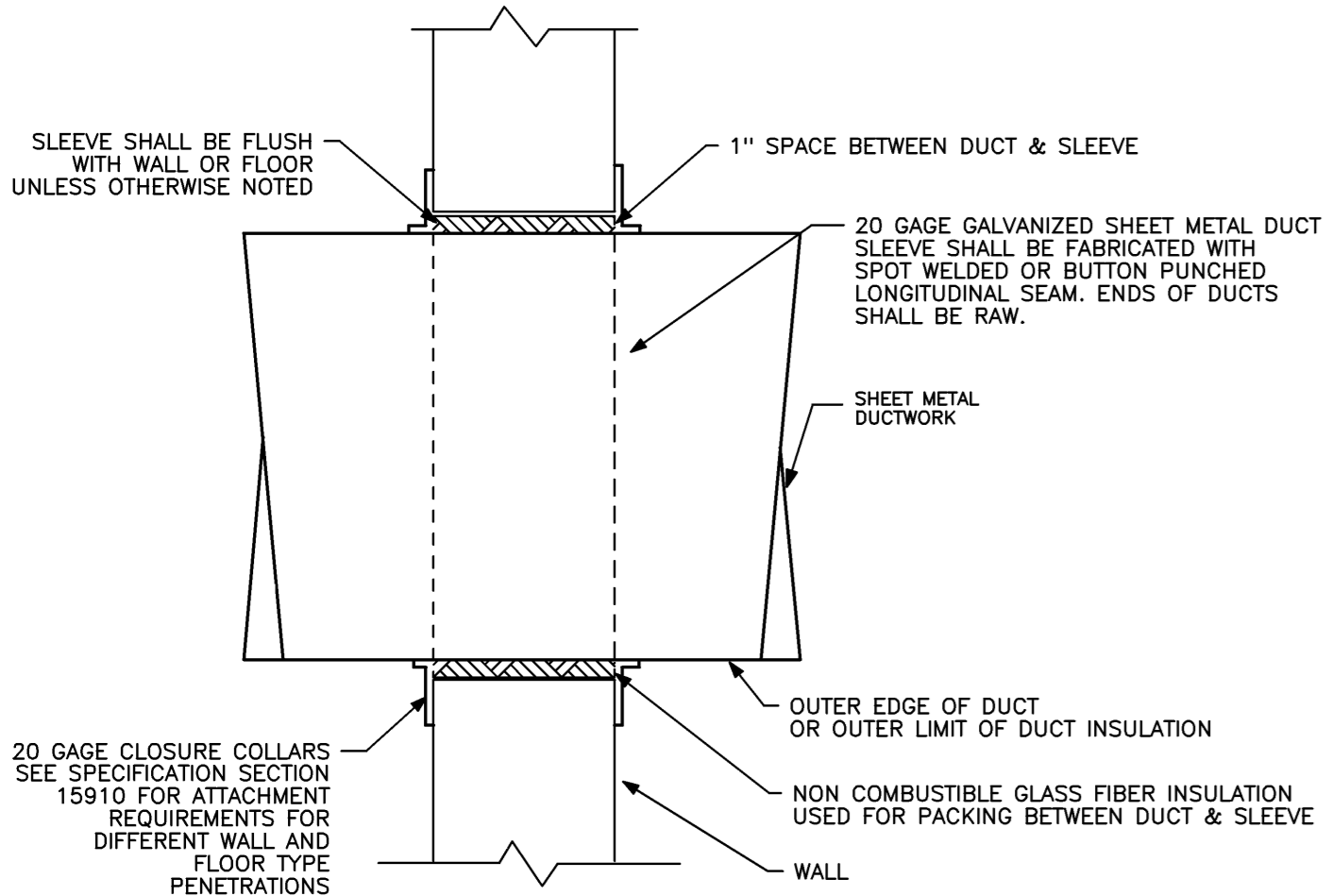
NO SCALE REF: NA

C4

C3

A3

C1



INSULATED SUPPLY AND RETURN DUCTWORK SHALL BE INSTALLED WITH STAND-OFF MOUNTING BRACKETS FOR VOLUME/BALANCING DAMPER OPERATORS. ALLOW CLEARANCE BETWEEN DUCT AND OPERATOR OF NOT LESS THAN INSULATION THICKNESS.

DUCT SLEEVE DETAIL

LAY-IN AIR DEVICE UNDER DUCT

ROUND-NECK DIFFUSER CONNECTION

LAY-IN CEILING AIR DEVICE
CEILING AIR DEVICE DETAILS

STRAP HANGERS

TRAPEZE HANGERS

ISOMETRIC VIEW

PLAN VIEW

NO SCALE REF: NA

NO SCALE REF: NA

NO SCALE REF: NA

NO SCALE REF: NA

B4

A3

A2

A1

CEILING AIR DEVICE DETAILS

LOWER HANGER ATTACHMENT DETAIL

TYPICAL BRANCH DUCT TAKE-OFF DETAIL

NO SCALE REF: NA

NO SCALE REF: NA

NO SCALE REF: NA

HARRIMAN
Architects + Engineers

One Auburn Business Park
Auburn, Maine 04210
207.784.5100 tel
207.783.3017 fax

66 Pearl St., Suite 301
Portland, Maine 04101
207.775.0053 tel
207.775.0460 fax
www.harriman.com
© 2008

STATE OF MAINE
CLIFTON W. O'BRIEN
No. 6405
LICENSED PROFESSIONAL ENGINEER

Project Title
MAINE MEDICAL CENTER HVAC LAB RENOVATIONS
PORTLAND, MAINE

HA Project No. **08101**

Key Plan

Mark	Date	Description
-	10-31-08	ISSUED FOR BID
-	10-10-08	75% REVIEW

Issue Dates

Drawing Status

Drawing Title
MECHANICAL DETAILS

PA / PE: **CG** Drawn By: **REM**

Drawing Number

M30.1