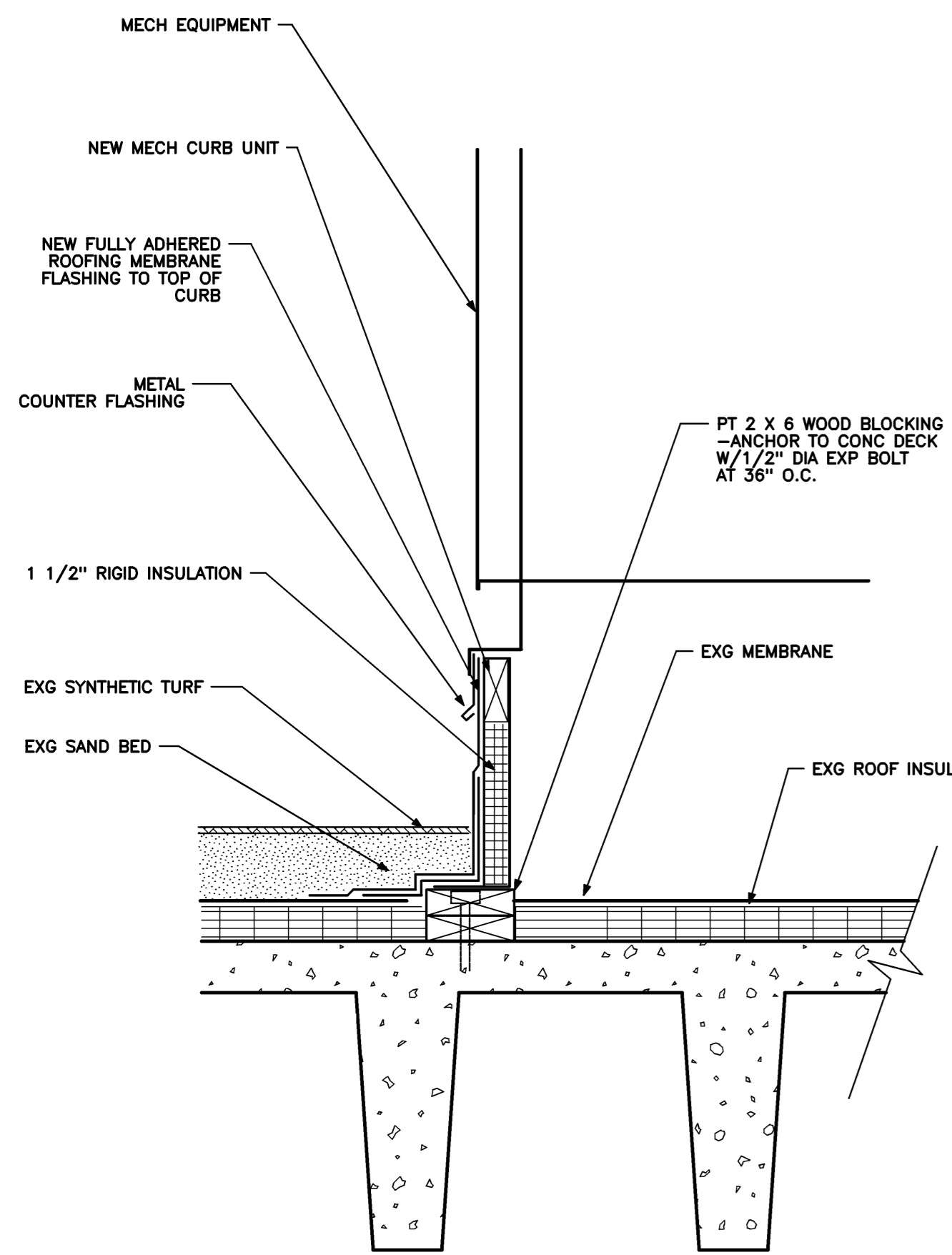
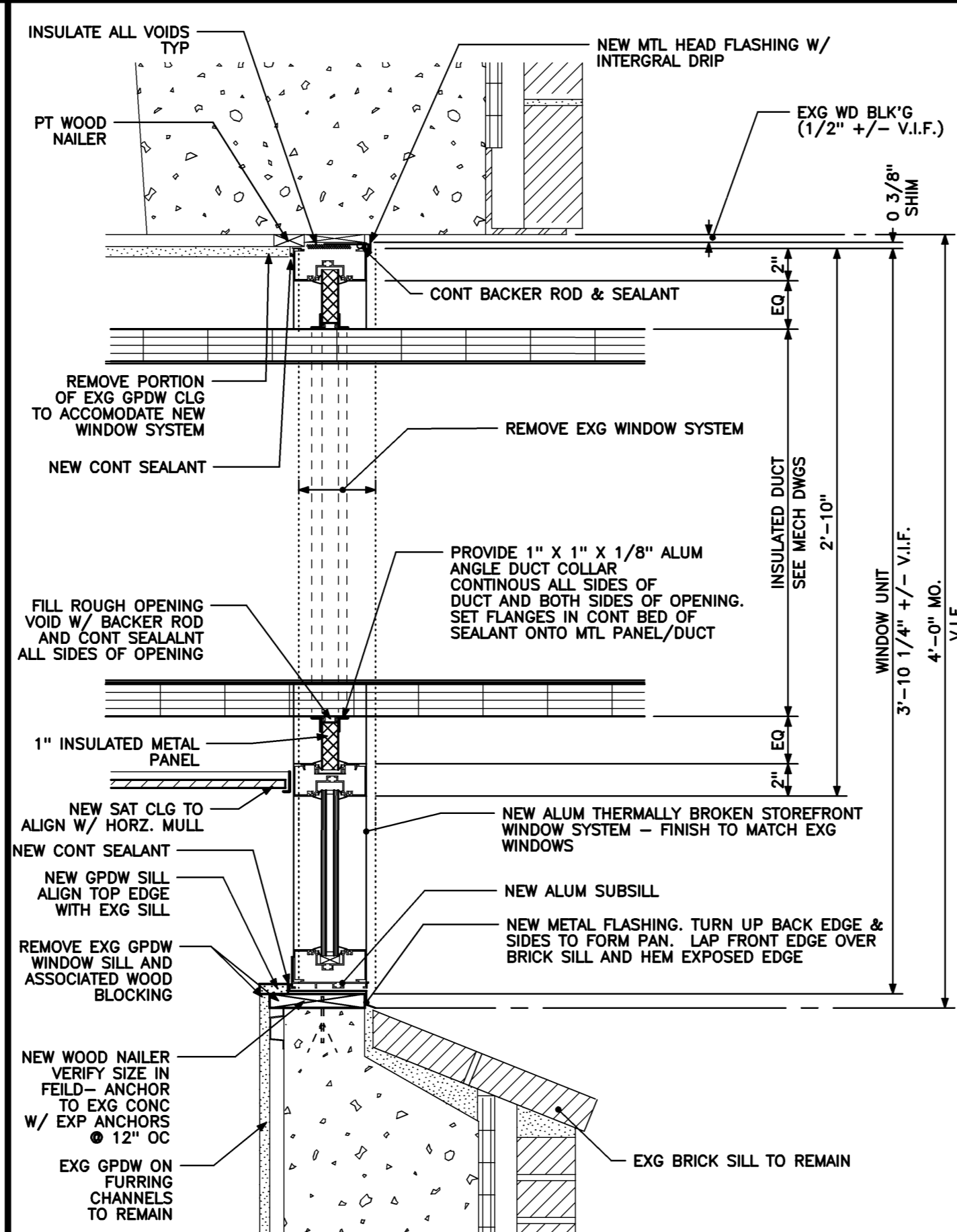


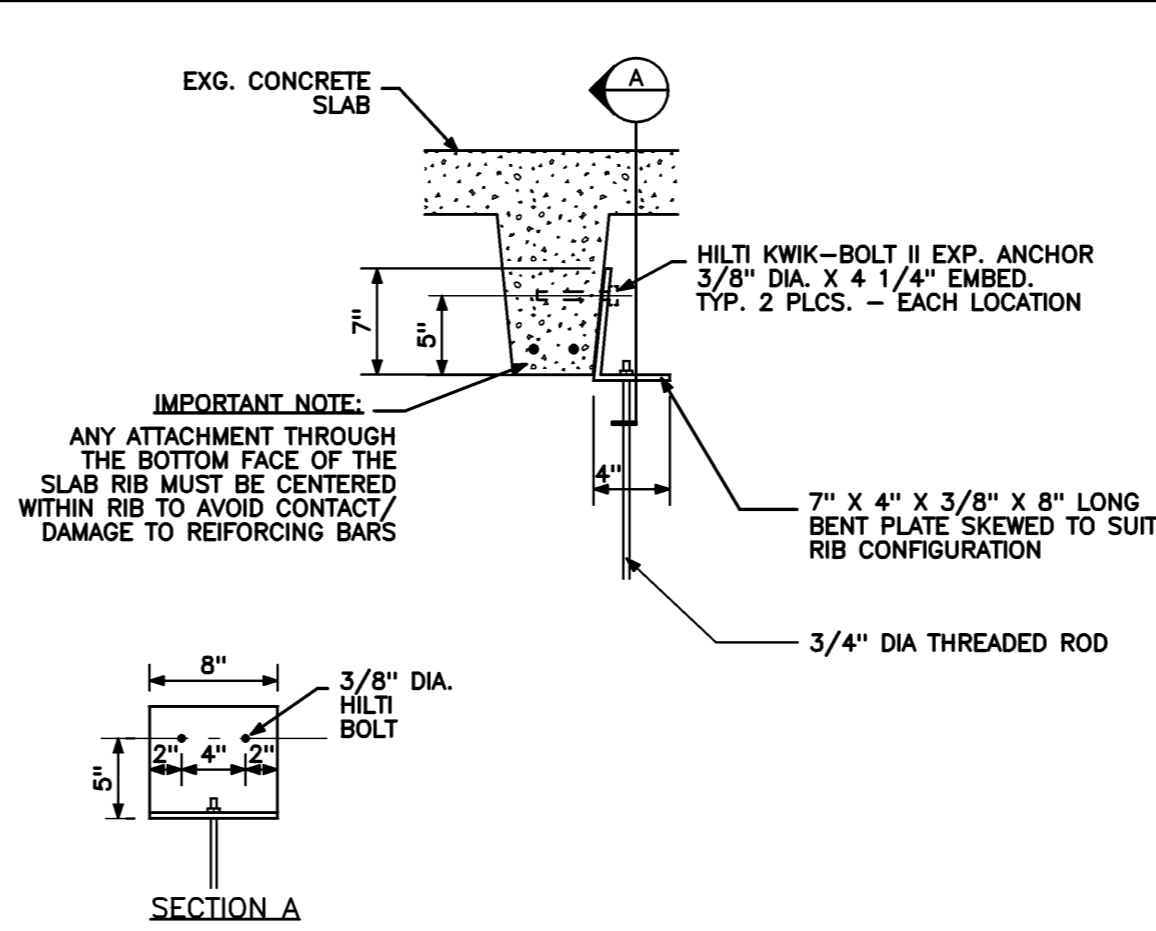
PARTIAL EXTERIOR ELEVATION
 1/8" = 1'-0" REF: NA **B3**



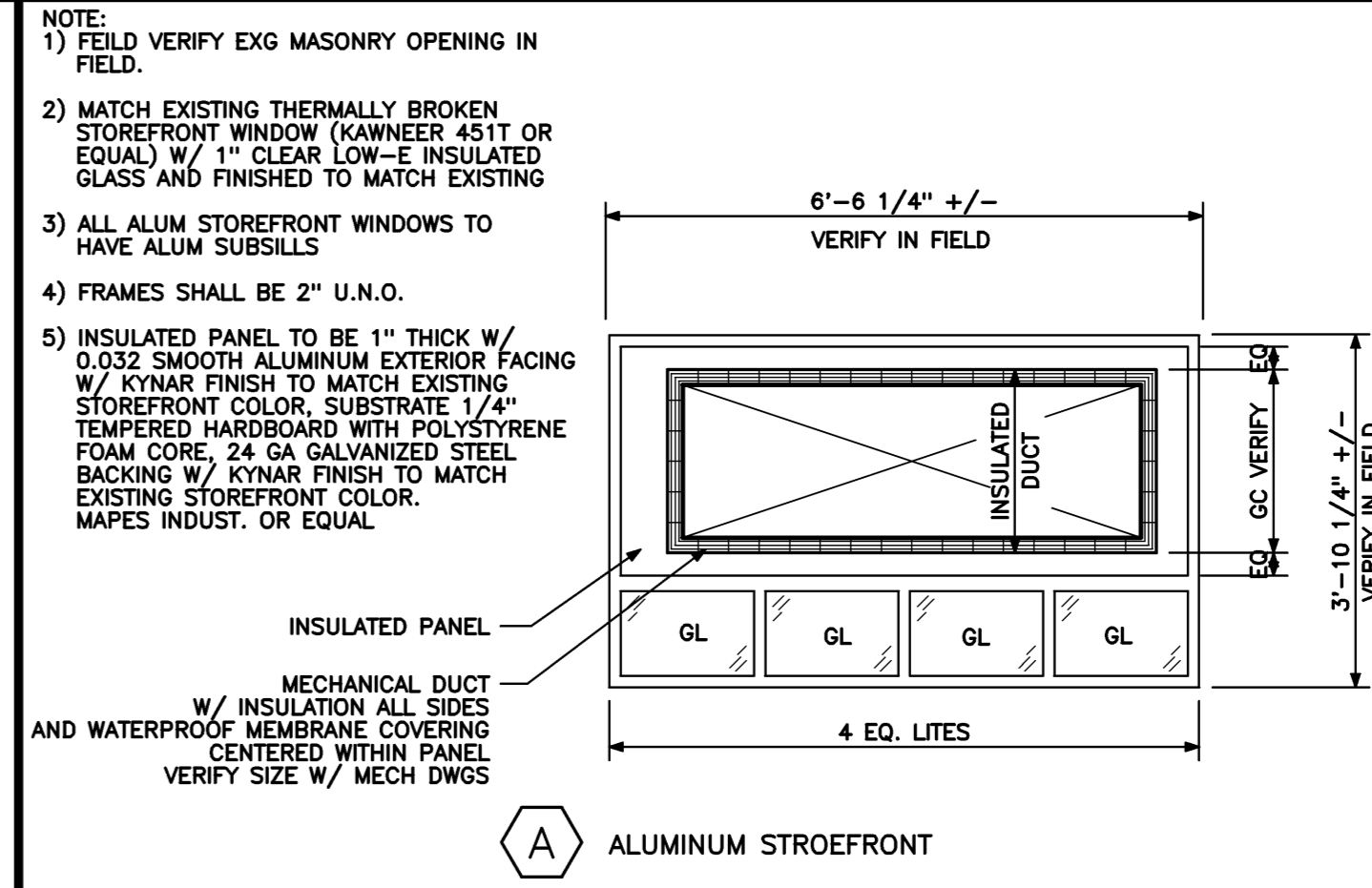
ROOF CURB AT MECH EQUIP
 1 1/2" = 1'-0" REF: NA **A3**



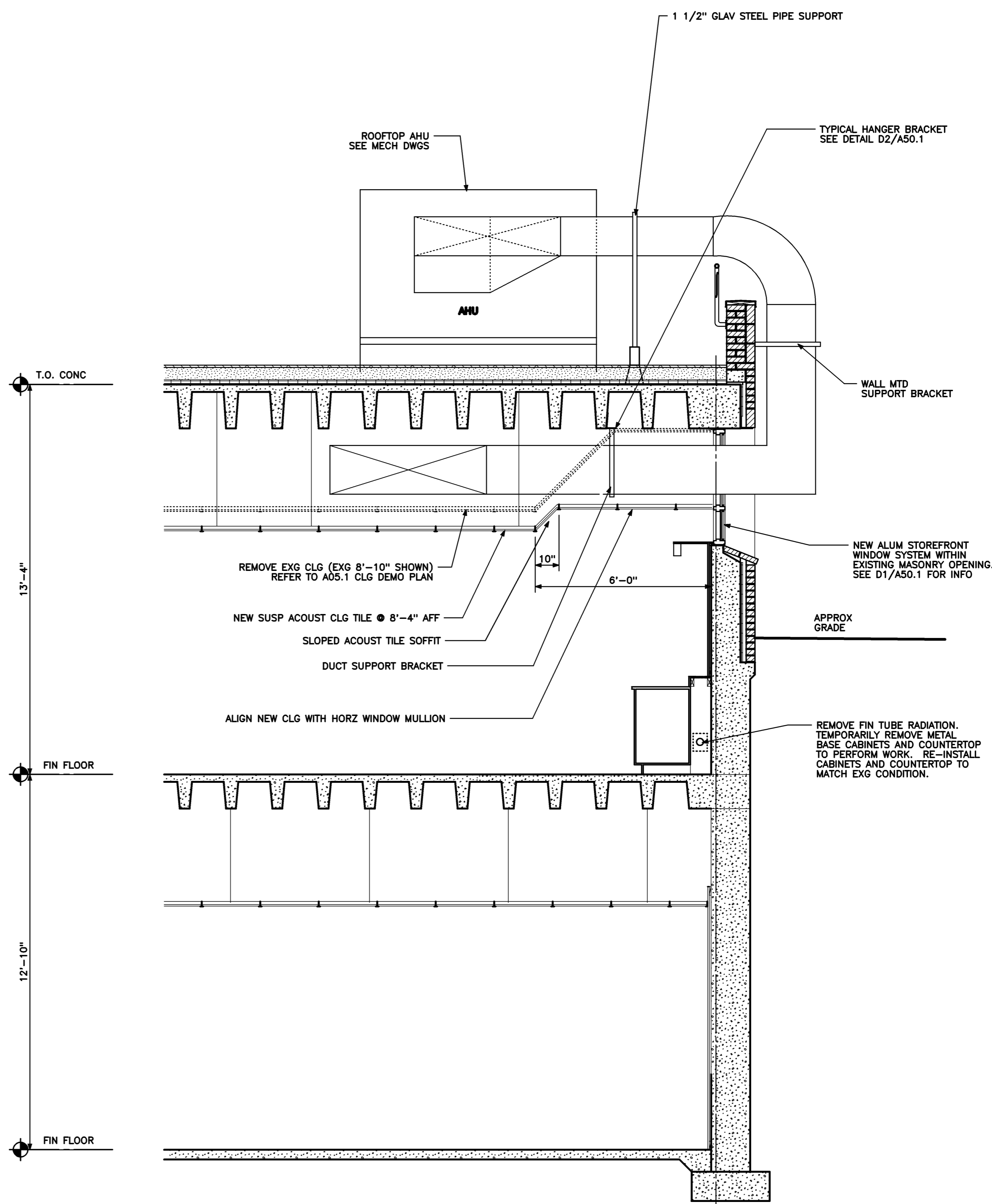
WINDOW DETAIL
 1 1/2" = 1'-0" REF: NA **A2**



TYPICAL HANGER DETAIL AT CONC BEAM
 1/2" = 1'-0" REF: NA **D2**



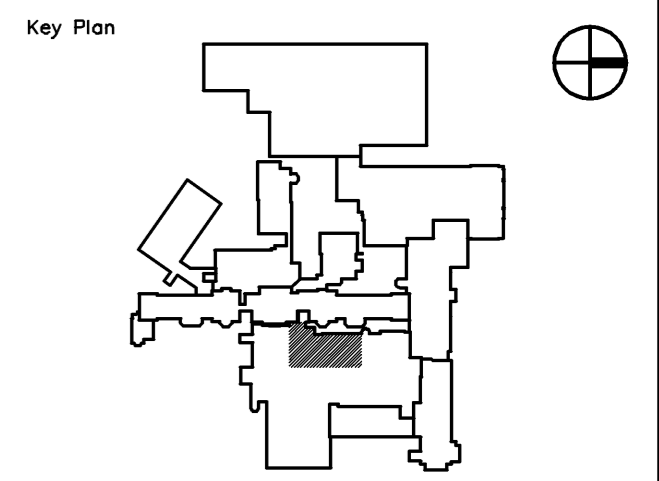
NEW WINDOW TYPE
 1/2" = 1'-0" REF: NA **D1**



EXISTING WALL SECTION
 3/8" = 1'-0" REF: NA **A1**

HARRIMAN
 Architects + Engineers
 Auburn Business Park
 46 Harriman Drive
 Auburn, Maine 04210
 207.784.5100 tel
 207.782.3017 fax
 123 Middle Street
 Portland, Maine 04101
 207.775.0033 tel
 207.775.0460 fax
 www.harriman.com
 © 2008

Project Title
MAINE MEDICAL CENTER HVAC LAB RENOVATIONS
 PORTLAND, MAINE



Mark	Date	Description
-	10-31-08	ISSUED FOR BID
-	10-10-08	75% REVIEW

Mark	Date	Description
-	10-31-08	ISSUED FOR BID
-	10-10-08	75% REVIEW

Drawing Status

--	--	--

Drawing Title
DETAILS

PA / PE: **JBL** Drawn By: **MCM**

Drawing Number
A50.1