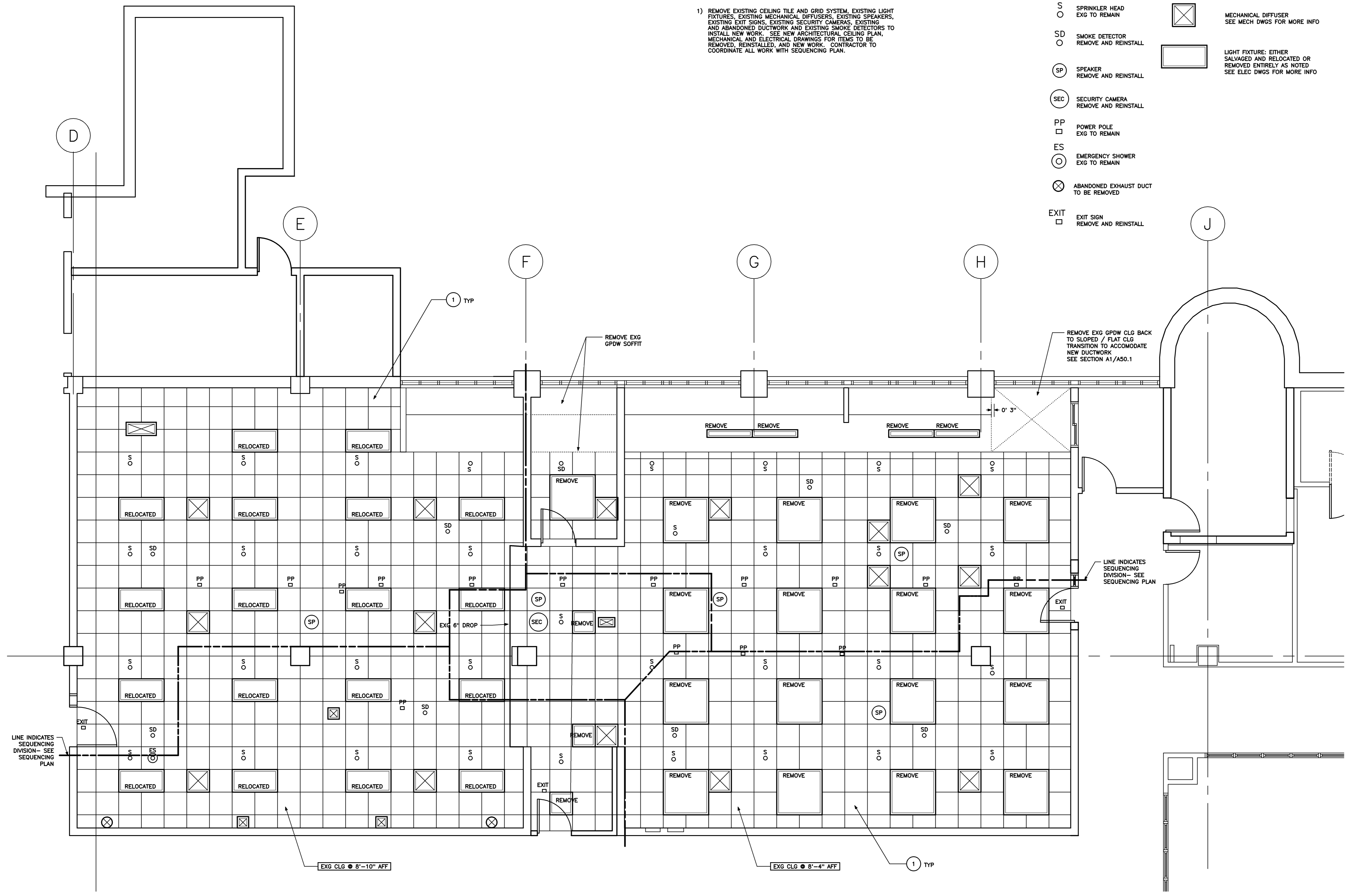


DEMOLITION KEY NOTES:

1) REMOVE EXISTING CEILING TILE AND GRID SYSTEM, EXISTING LIGHT FIXTURES, EXISTING MECHANICAL DIFFUSERS, EXISTING SPEAKERS, EXISTING EXIT SIGNS, EXISTING SECURITY CAMERAS, EXISTING AND ABANDONED DUCTWORK AND EXISTING SMOKE DETECTORS TO INSTALL NEW WORK. SEE NEW ARCHITECTURAL CEILING PLAN, MECHANICAL AND ELECTRICAL DRAWINGS FOR ITEMS TO BE REMOVED, REINSTALLED, AND NEW WORK. CONTRACTOR TO COORDINATE ALL WORK WITH SEQUENCING PLAN.

LEGEND

- S ○ SPRINKLER HEAD
EXG TO REMAIN
- SD ○ SMOKE DETECTOR
REMOVE AND REINSTALL
- SP ○ SPEAKER
REMOVE AND REINSTALL
- SEC ○ SECURITY CAMERA
REMOVE AND REINSTALL
- PP □ POWER POLE
EXG TO REMAIN
- ES ○ EMERGENCY SHOWER
EXG TO REMAIN
- ⊗ ABANDONED EXHAUST DUCT
TO BE REMOVED
- EXIT □ EXIT SIGN
REMOVE AND REINSTALL
- ⊠ MECHANICAL DIFFUSER
SEE MECH DWGS FOR MORE INFO
- LIGHT FIXTURE: EITHER SALVAGED AND RELOCATED OR REMOVED ENTIRELY AS NOTED
SEE ELEC DWGS FOR MORE INFO



Issue Dates		
–	10-31-08	ISSUED FOR BID
–	10-10-08	75% REVIEW
Mark	Date	Description

Drawing Status	
Drawing Title	FIRST FLOOR CEILING DEMOLITION PLAN
PA / PE:	JBL
Drawn By:	MCM
Drawing Number	

Issue Dates		
–	10-31-08	ISSUED FOR BID
–	10-10-08	75% REVIEW
Mark	Date	Description

Drawing Title	FIRST FLOOR CEILING DEMOLITION PLAN
PA / PE:	JBL
Drawn By:	MCM
Drawing Number	