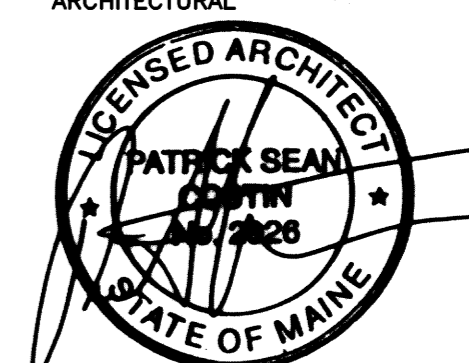
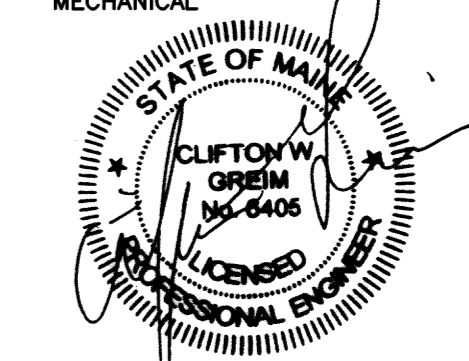
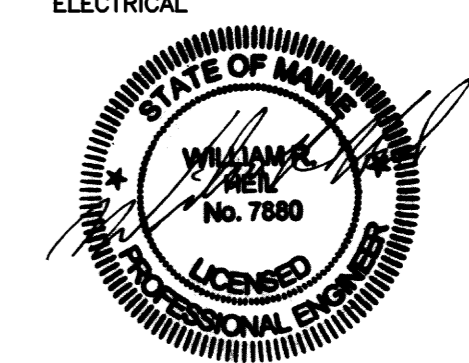


MAINE MEDICAL CENTER HVAC LAB RENOVATIONS

ISSUED FOR BID
10-31-08

LIST OF DRAWINGS	
	T01.1 COVER SHEET
ARCHITECTURAL 	A02.1 CODE PLAN A05.1 FIRST FLOOR CEILING DEMOLITION PLAN A10.1 FIRST FLOOR SEQUENCE PLAN A10.2 FIRST FLOOR EQUIPMENT PLAN A10.3 FIRST FLOOR CEILING PLAN A15.1 ROOF PLAN A50.1 DETAILS
MECHANICAL 	P10.1 PLUMBING FIRST AND SECOND FLOOR PLANS M00.1 MECHANICAL LEGEND AND NOTES M10.1 MECHANICAL LOWER & FIRST FLOOR DEMOLITION M10.2 MECHANICAL FIRST FLOOR DUCTWORK M20.1 MECHANICAL LOWER & FIRST FLOOR PIPING M30.1 MECHANICAL DETAILS M30.2 MECHANICAL DETAILS M31.1 MECHANICAL SECTIONS M40.1 MECHANICAL SCHEDULES
ELECTRICAL 	E00.1 ELECTRICAL LEGEND, NOTES AND ABBREVIATIONS E05.0 ELECTRICAL DEMOLITION LIGHTING GROUND FLOOR PLAN E05.1 ELECTRICAL DEMOLITION POWER & SYSTEMS FIRST FLOOR PLAN E10.1 ELECTRICAL NEW LIGHTING FIRST FLOOR PLAN E20.0 ELECTRICAL CONDUIT ROUTING GROUND FLOOR PLAN

GENERAL ABBREVIATIONS

SYMBOLS USED AS ABBREVIATIONS	FOC FACE OF CONCRETE	FOS FACE OF STUD	FIN FINISH (ED)	FL FINISH LENGTH	FA FIRE ALARM	FD FIRE DAMPER	FE FIRE EXTINGUISHER	FHS FIRE HOSE STATION	FLG FLASHING	FC FLEXIBLE CONNECTION	FLR FLOOR (ING)	FLO FLOOR CLEANOUT	FCD FLOOR DRAIN	FRR FLOOR RETURN REGISTER	FTG FOOTING	FD FOUNDATION DRAIN	FAD FRESH AIR INTAKE	FY MINIMUM YIELD STRESS (KSI)	PNT PANEL	PAR PARALLEL	PAR PARTITION	PLAM PLASTIC LAMINATE	P PLATE	PLUM PLUMBING	PWD PLYWOOD	PT POINT TO POINT	PP POLISHED WIRE GLASS	PVC POLYVINYL CHLORIDE	PSF POUNDS PER SQUARE FOOT	PSI POUNDS PER SQUARE INCH	PPN PREFINISHED PROPERTY LINE	P PUMP																																																													
ABBREVIATIONS	GA GAGE, GAUGE	GPM GALLONS PER MINUTE	GV GALVANIZED	GC GENERAL CONTRACT (OR)	GL GLASS	GB GRAB BAR	GD GYPSUM DRY WALL	OT QUARRY TILE	RAD RADIATION	RAB RADIUS	REF REFERENCE	REFR REFRIGERATOR	RA RETURN AIR	RG RETURN GRILLE	RR RETURN REGISTER	REV REVISION (S)	RW RIGHT OF WAY	R RISER	RD ROOF DRAIN	RL ROOF LEADER	RM RUBBER BASE	RO ROUGH OPENING	RD RUBBER BASE	S SEC	SSK SERVICE SINK	SHT SHEET	SIM SIMILAR	SK SINK	SD SMOKE DAMPER	SOIL SOIL	SMU SOLID MASONRY UNIT	S SOUTH	SPR SPRUCE PINE FIR SPECIFICATION (S)	SQ SQUARE	SS STAINLESS STEEL	STD STANDARD	STEAM	STL STEEL	STOR STORM DRAIN	SDM STORM DRAIN MANHOLE	SA SUPPLY AIR	SA SUPPLY FAN	SG SUPPLY GRILLE	SR SUPPLY REGISTER	SYM SYMMETRY (CAL)	SYS SYSTEM																																															
ABT ABOUT	H HARDENER	HTG HEATING	HVAC HEATING-VENTILATING-AIR CONDITIONING	HT HEIGHT	HPS HIGH PRESSURE STEAM	HM HOLLOW METAL	HORIZ HORIZONTAL	HD HUB DRAIN	HTW HOT TEMPERATURE WATER	HW HOT WATER	HYD HYDRANT	ID INSIDE DIAMETER	INS INSULATE (D) (ON)	INT INTERIOR	INV INVERT	IPS IRON PIPE SIZE	JC JANITOR'S CLOSET	JT JOINT	K KIPS	KSI KIPS PER SQUARE INCH	KIT KITCHEN	LAB LABORATORY	LAM LAMINATE (D)	LAV (L) LAVATORY	LF LINEAR FAUCET	LD LINEAR DIFFUSER	LD LINEAR DUCT	LF LINEAL FEET	LL LINEAL	LL LIVE LOAD	LG LONG	LPS LOW PRESSURE STEAM	LW LOW TEMPERATURE STEAM	LB (S) LIMIT OF WORK POUNDS	MH MANHOLE	MD MANUAL DAMPER	MFR MANUFACTURE (R)	MAS MASONRY	MO MASONRY OPENING	MAX MAXIMUM	MECH MECHANICAL	MED MEDIUM	MET METAL	MT METAL THRESHOLD	M DIAMETER	MM MILLIMETER (S)	MN MINIMUM	MISC MISCELLANEOUS	MR MOP RECEPTOR	MR MOUNTED	MD MOUNTED	MBH 1000 BRITISH THERMAL UNIT	NS NEAR SIDE	NC NORMALLY CLOSED	NO NORMALLY OPEN	N NORTH	NA NOT APPLICABLE	NI NOT IN CONTRACT	NTS NOT TO SCALE	No NUMBER	OFF OFFICE	OC ON CENTER (S)	OED OPEN END DUCT	OP OPENING	OPP OPPOSITE	OPH OPPOSITE HAND	OD OUTSIDE DIAMETER	OH OVERHEAD	UD UNDERDRAIN	UGD UNDERGROUND DUCTWORK	UH UNIT HEATER	UNO UNLESS NOTED OTHERWISE	UR URINAL	UV UNIT VENTILATOR	VAV VARIABLE AIR VOLUME	VENT VENT THRU ROOF	VERT VERTICAL	VB VINYL BASE	VCT VINYL COMPOSITION TILE	VF VINYL FABRIC	VD VOLUME DAMPER	WCO WALL CLEANOUT	WG WALL GRILLE	WH WALL HUNG	WR WALL REGISTER	WC WATER CLOSET	WCH WATER CLOSET HANDICAP	WWF WELDED WIRE FABRIC	W WEST, WIDTH, WIDE	WIN WINDOW	W WITH	WO WITHOUT	WP WORKING POINT

GRAPHIC LEGEND

	BUILDING SECTION
	WALL SECTION
	ELEVATION
	DETAIL
THE FOLLOWING APPLIES TO THE ABOVE MARKERS :	
	INDICATES SECTION OR DETAIL NUMBER
	INDICATES DRAWING SHEET ON WHICH SECTION OR DETAIL IS SHOWN
	COLUMN REFERENCE GRID
	PARTITION TYPE MARKER - NON-RATED
	PARTITION TYPE MARKER - FIRE-RATED 1 HOUR OR LESS
	PARTITION TYPE MARKER - FIRE-RATED 2 HOURS OR MORE
	INTERIOR ELEVATION MARKER
	ROOM-SPACE NUMBER
	EQUIPMENT NUMBER
	DOOR OR BORROW LIGHT NUMBER
	WINDOW TYPE
	LEVEL LINE
	REVISION
	PROJECT NORTH (MAGNETIC NORTH ARROW USED ON PLOT SITE PLAN ONLY)

MATERIALS LEGEND

	EARTH
	POROUS FILL (STONE OR GRAVEL, ETC)
	ROCK
	LIGHTWEIGHT CONCRETE (OR CONCRETE FILL)
	STRUCTURAL CONCRETE (CAST-IN-PLACE, PRECAST, ETC)
	BRICK (COMMON OR FACE)
	CONCRETE MASONRY UNITS
	METAL (LARGE SCALE)
	METAL (SMALL SCALE)
	WOOD, FINISHED
	WOOD, ROUGH
	INSULATION (LOOSE OR BATT)
	INSULATION (RIGID)
	GLASS (LARGE SCALE)
	CERAMIC TILE
	GYPSUM WALL BOARD (FIBERBOARD, ETC.)
	PLASTER, SAND, CEMENT, GROUT
	ACOUSTICAL TILE
	RESILIENT FLOORING
	SHEET METAL
	GLAZING
	BRICK
	STEEL STUD
	EXISTING TO REMAIN

CODE REVIEW

PROJECT DESCRIPTION
RENOVATION OF THE HVAC SYSTEMS SERVING THE LAB

TOTAL SQUARE FOOTAGE
RENOVATED AREA - 3400 SQ FT

OCCUPANCY CLASSIFICATION :
INSTITUTIONAL USE GROUP 1 2

TRAVEL DISTANCE :
200 FT MAX (BOCA)

FIRE SUPPRESSION :
PARTIALLY SPRINKLERED SYSTEM IN BUILDING
RENOVATED SMOKE COMPARTMENT FULLY SPRINKLERED AND SUPERVISED

BUILDING IS DESIGNED TO THE FOLLOWING CODES :
AMERICANS WITH DISABILITIES ACT (ADA) 1
IBC 2003
NFPA 101 LIFE SAFETY CODE 2000
NFPA 70 NATIONAL ELECTRICAL CODE 1999
NFPA 72 NATIONAL FIRE ALARM CODE 1999
NFPA 10 PORTABLE FIRE EXTINGUISHERS 1999
NFPA 13 INSTALLATION OF SPRINKLER SYSTEMS 1999
NFPA 99 HEALTH CARE FACILITIES 1999
STATE OF MAINE INTERNAL PLUMBING RULES 2000
MECHANICAL CODE NMC 1993

CONSTRUCTION TYPE :
TYPE 2B PROTECTED NON-COMBUSTIBLE
22,500 SF MAX PER SMOKE COMPARTMENT
SHAFTS AND STAIRWELLS - 2 HOUR
COLUMNS - 2 HOUR
FLOOR CONSTRUCTION - 2 HOUR
ROOF CONSTRUCTION - 2 HOUR

HARRIMAN

Architects + Engineers

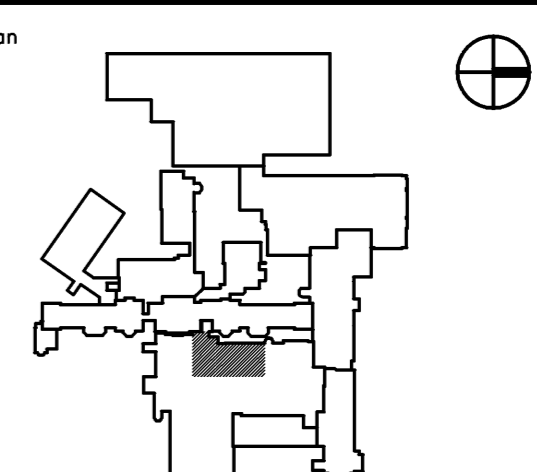
Auburn Business Park
46 Harriman Drive
Auburn, Maine 04210
207.784.5100 tel
207.782.3017 fax

123 Middle Street
Portland, Maine 04101
207.775.0053 tel
207.775.0460 fax

www.harriman.com

© 2008

Key Plan



COVER SHEET

T01.1