

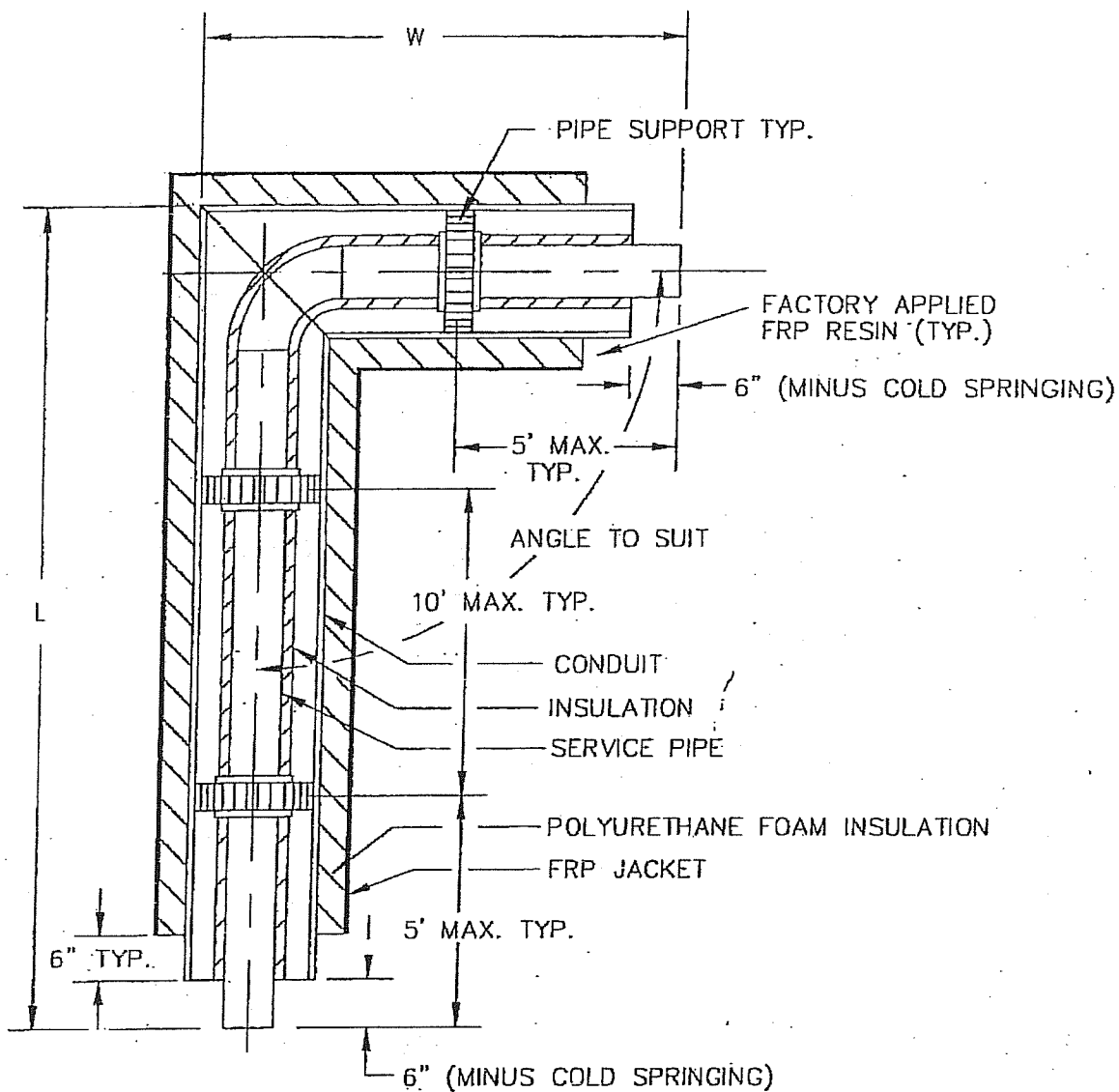
MULTI-THERM 500 CROSS SECTION				
SECTION	SERVICE PIPE	INSULATION THICKNESS	CONDUIT OD	Total OD
Stm	2-1/2" A53 Gr. B Sch 40	1"	8-5/8"	10.91"
Stm	1-1/2" A53 Gr. B Sch 40	1"	6-5/8"	8.79"
Cond	2" A53 Gr. B Sch 80	1"	6-5/8"	8.79"
.
.
.
.
.
.

PERMA-PIPE / RICWIL

PERMA-PIPE, INC.
 A SUBSIDIARY OF MFRI, INC.
 7720 LEHIGH AVE. NILES, IL 60714
 MANUFACTURING FACILITY
 1310 QUARLES DR. LEBANON, TN 37087

MULTI-THERM 500
 SINGLE PIPE
 CROSS SECTION TABULATION

DATE	2/15/99	BY	KL	DWG. NO
REV.	0	APPR'D.		MT-1005



NOTE:

- 1) FOR 2" AND SMALLER STEEL PIPE: SQUARE ENDS
3000 LB SOCKET WELD FITTINGS
FOR 2 1/2" AND LARGER STEEL PIPE: BEVELED ENDS
BUTTWELD FITTINGS
- 2) WELD-O-LETS OR SOCK-O-LETS
MAY BE USED, FOR REDUCING TEES
- 3) PIPE BENDING IN PLACE OF WELDED
ELBOWS MAY BE USED

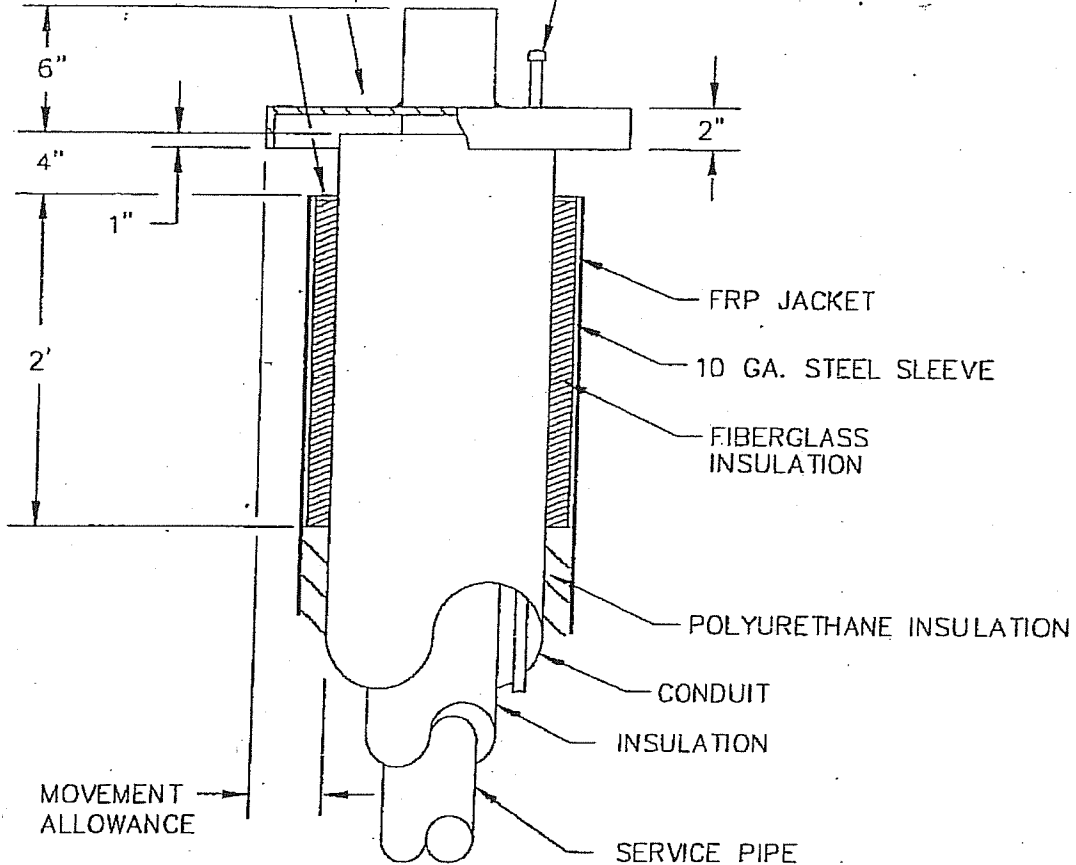
PERMA-PIPE / RICWIL		
PERMA-PIPE, INC. A SUBSIDIARY OF MFRI, INC. 7720 LEHIGH AVE. NILES, IL 60714 MANUFACTURING FACILITY 1310 QUARLES DR. LEBANON, TN 37087		
MULTI-THERM 500 ELBOW ASSEMBLY		
DATE	BY	DWG. NO
2/15/99	KL	MT-1210
REV.	APPR'D	
0		

WATERSHED
SHIPPED LOOSE, WELDED
TO SERVICE PIPE & DRAIN
TUBE AFTER FINAL CONDUIT
PRESSURE TEST

For Outside the Building

GALVANIZED STEEL END PLATE

3/4" OD DRAIN TUBE
TO BOTTOM OF CONDUIT



NOTE:

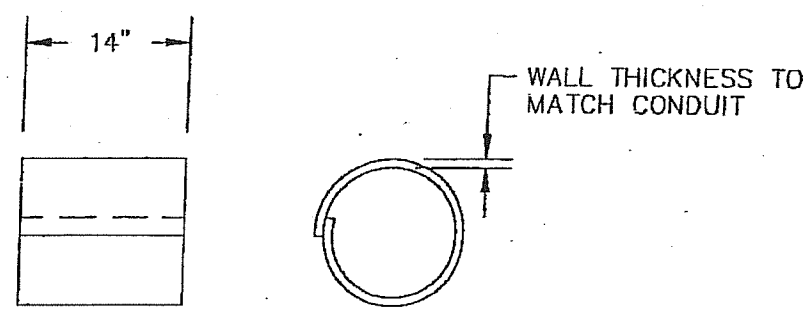
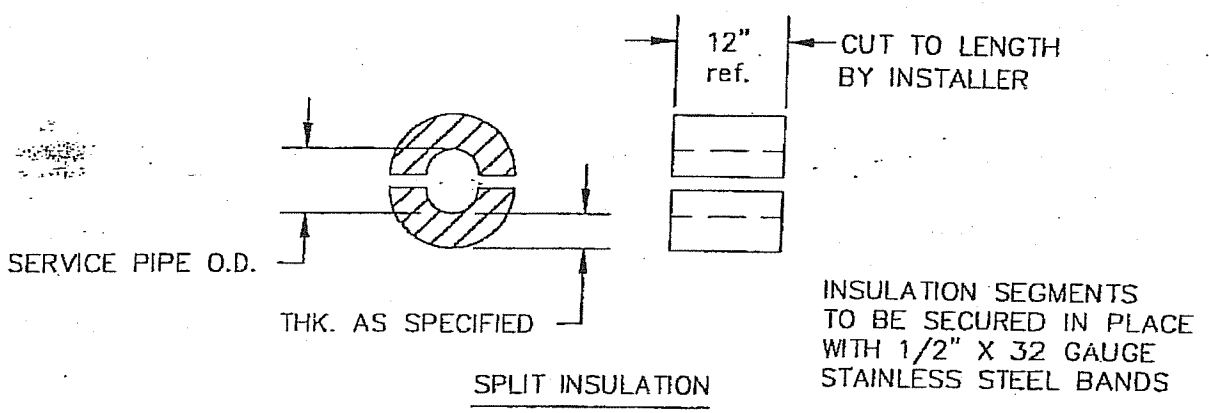
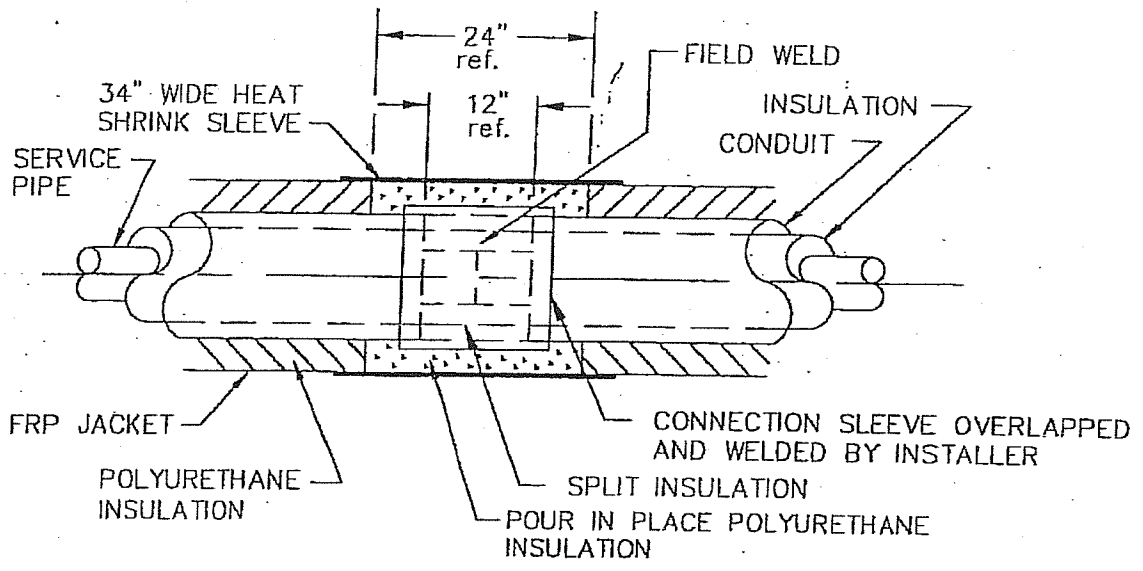
1. WATERSHED, SHIPPED LOOSE, WELDED TO SERVICE PIPE & DRAIN TUBE BY INSTALLER AFTER FINAL CONDUIT PRESSURE TEST

PERMA-PIPE / RICWIL

PERMA-PIPE, INC.
A SUBSIDIARY OF MFRI, INC.
7720 LEHIGH AVE. NILES, IL 60714
MANUFACTURING FACILITY
1310 QUARLES DR. LEBANON, TN 37087

MULTI-THERM 500
SINGLE PIPE
WATERSHED ASSEMBLY

DATE 2/15/99	BY KJ	DWG. NO MT-1130
REV. 0	APPR'D. <i>[Signature]</i>	



NOTES:

1. SOCKETWELD COUPLINGS, IF REQUIRED, SUPPLIED BY INSTALLER
2. ROLLED SLEEVES NOT AVAILABLE FOR CONDUIT SMALLER THAN 6"
3. MAXIMUM ROLLED SLEEVE THICKNESS:
3/16" FOR 8" DIAMETER
1/4" FOR 10" AND ABOVE
4. STORE ALL CHEMICALS AT 60°F TO 85°F

PERMA-PIPE / RICWIL		
PERMA-PIPE, INC. A SUBSIDIARY OF MFRI, INC. 7720 LEHIGH AVE. NILES, IL 60714 MANUFACTURING FACILITY 1310 QUARLES DR. LEBANON, TN 37087		
MULTI-THERM 500 FIELD JOINT ASSEMBLY ROLLED SLEEVE & HEAT SHRINK SLEEVE		
DATE 2/15/99	BY KL	DWG. NO
REV. 0	APPR'D	MT-1460