

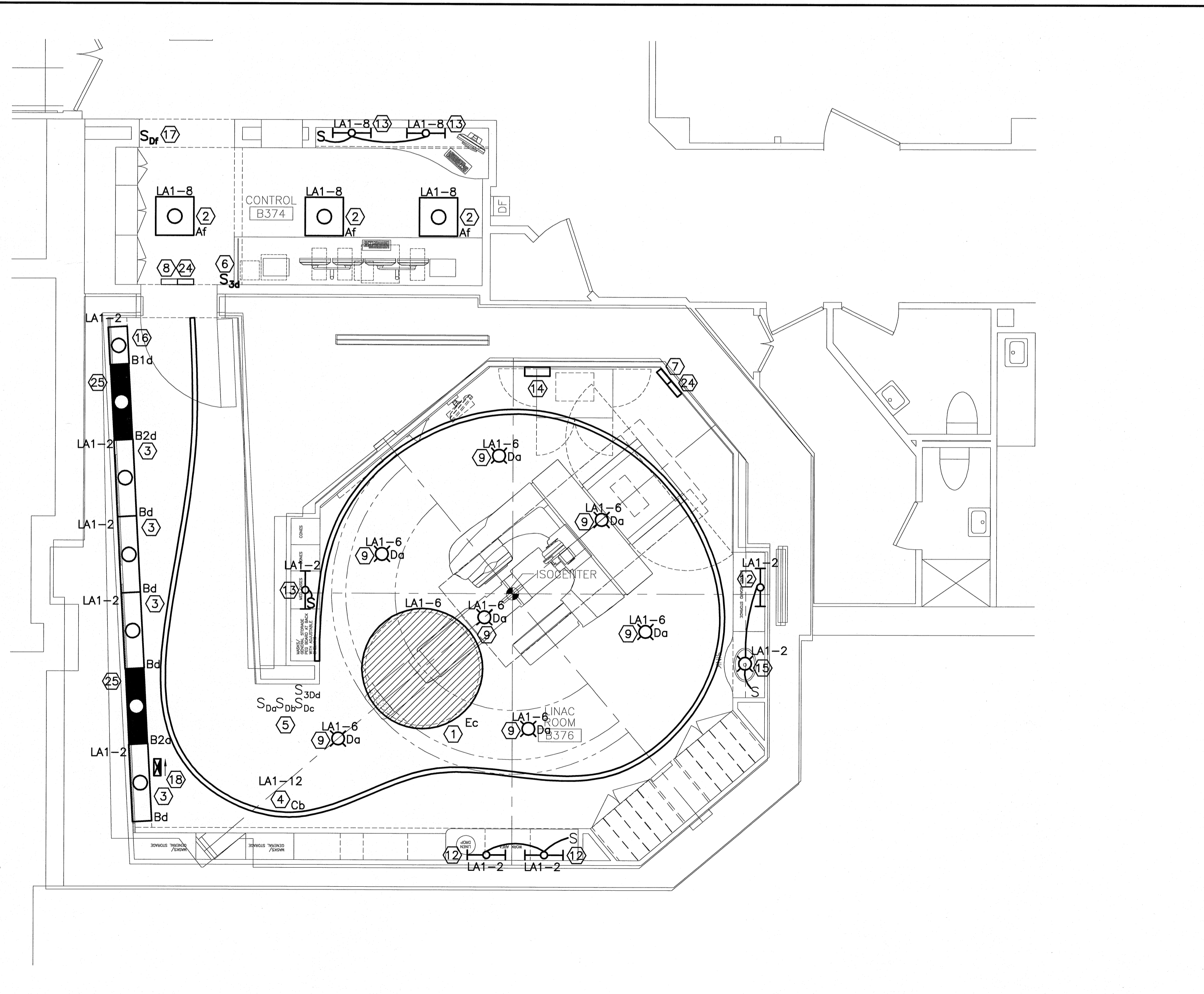
NOTE:

- SEE SHEET E-001 FOR LEGEND AND GENERAL NOTES.
- COORDINATE ALL WORK WITH OWNER, ARCHITECT AND VARIAN EQUIPMENT INSTALLER, FIELD GUIDES, AND EQUIPMENT SPECIFICATIONS.

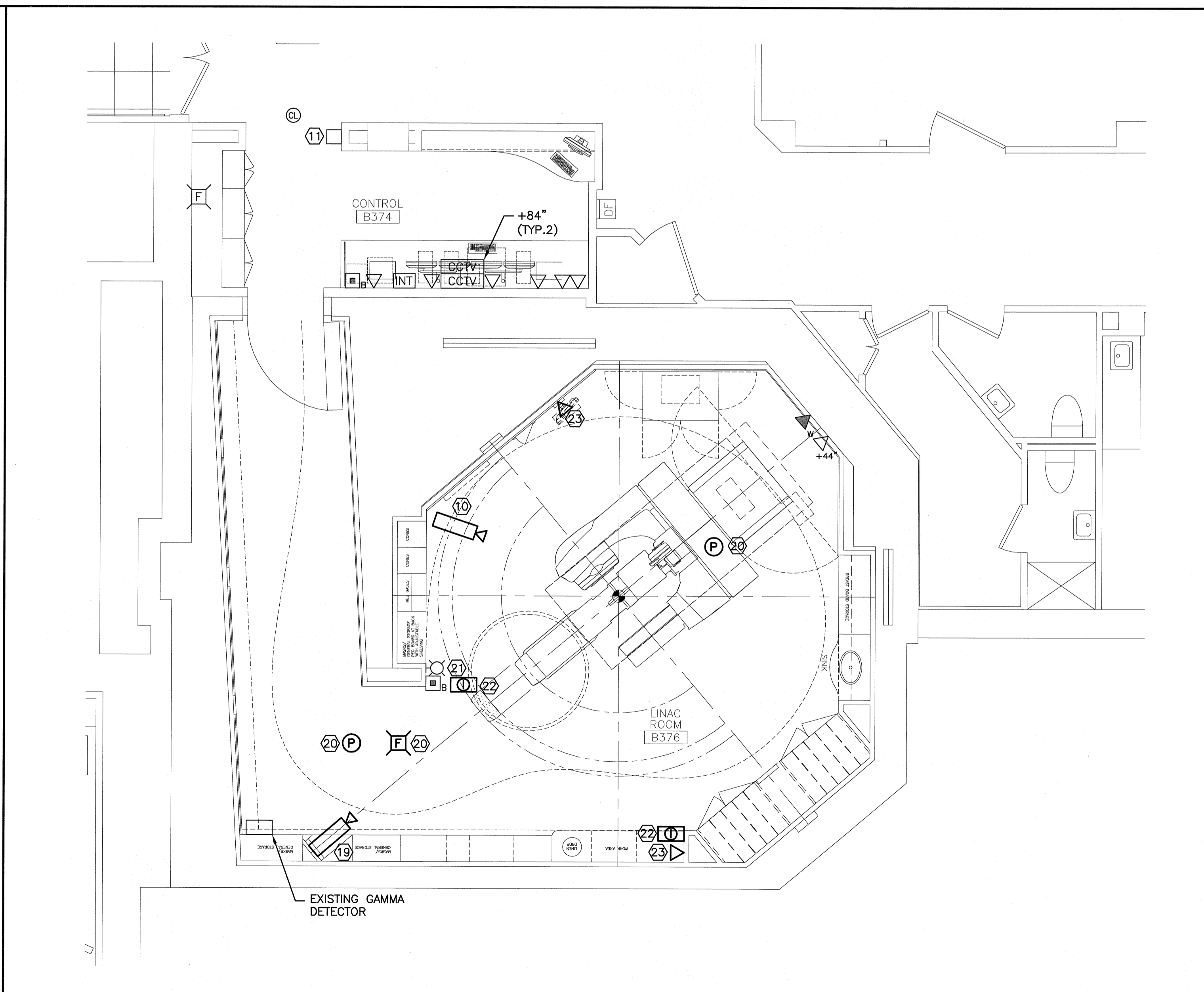
KEYED NOTE:

- FIXTURE TYPE E: INSTALL OWNER FURNISHED LUMINOUS CEILING PANEL LIGHT BOXES WITH 0-10V DIMMER SWITCH. CONNECT TO EXISTING LIGHTING BRANCH CIRCUIT SERVING THE ROOM.
- FIXTURE TYPE A: FURNISH AND INSTALL NEW 2'X2' DIRECT/INDIRECT FIXTURE W/ PERFORATED METAL BASKET TO MATCH FACILITY STANDARD (LIGHTOLIER #QV2GGPTOS2FT). PROVIDE W/ LUTRON ECO-10 DIMMING BALLAST OR EQUAL, 120V, 2-F32T8 LAMPS, 3500K.
- FIXTURE TYPE B: FURNISH AND INSTALL NEW 4' RECESSED COVE WALL WASH FIXTURE (DAY O LITE #JB SERIES OR EQUAL). PROVIDE W/ LUTRON ECO-10 DIMMING BALLAST OR EQUAL, 120V, 1-F32T8 LAMP, 3500K. CONNECT TO LIGHTING BRANCH CIRCUIT AS INDICATED.
- FIXTURE TYPE C: PROVIDE LOW VOLTAGE LED COVE LIGHTING W/ 3500K 1 WATT LED LAMPS AT 2" CENTERS (ARDEE #CLK SERIES STRIP WITH #HPL1 SERIES LED FESTOON LAMPS AND 50° FOCUSING LENS). MOUNT TO THE BACK VERTICAL SURFACE OF NEW COVE OBSTRUCTED FROM VIEW. FIELD VERIFY EXACT LENGTH FOR SEAMLESS INSTALLATION. PROVIDE W/ A SINGLE 120-24VAC POWER SUPPLY TRANSFORMER FOR THE COMPLETE INSTALLATION AS INDICATED WITH LARGE CHOKE FOR DIMMING CONTROL. SUPPLY COMPATIBLE MAGNETIC LOW VOLTAGE DIMMER SWITCH AS REQUIRED. LOCATE POWER SUPPLY ABOVE ADJACENT ACCESSIBLE CEILING. COORDINATE INSTALLATION W/ ARCHITECT.
- EXISTING FLUORESCENT DIMMER SWITCHES TO BE MAINTAINED OR REPLACED AS REQUIRED FOR NEW FIXTURE DIMMING CONTROLS. SWITCH LEGS a,b,c SHALL BE FED VIA THE RELAY JUNCTION BOX FOR SYSTEM CONTROL.
- FURNISH AND INSTALL NEW THREE WAY SWITCH IN CONTROL ROOM FOR CONTROL OF MAZE LIGHTING AS INDICATED.
- REINSTALL "X-RAY IN USE" LIGHT FIXTURE REMOVED DURING DEMOLITION AND RECONNECT TO EXISTING 120V WARNING LIGHT CIRCUIT CONTROLLED VIA EXISTING RELAY JUNCTION BOX.

- EXISTING "X-RAY IN USE" LIGHT FIXTURE CONTROLLED VIA RELAY JUNCTION BOX TO BE MAINTAINED. COORDINATE CONNECTIONS W/ VARIAN INSTALLATION GUIDE AND INSTALLER.
- FIXTURE TYPE D: FURNISH AND INSTALL NEW 8" DIMMABLE COMPACT FLUORESCENT DOWNLIGHT W/ CLEAR ALZAK REFLECTOR (PRESCOLITE CFT8 SERIES) PROVIDE W/ LUTRON HI-LUME DIMMING BALLAST OR EQUAL DIMMABLE TO 1%, 120V, 1-42W TRIPLE TUBE LAMP, 3500K.
- NEW CCTV CAMERA TO REPLACE EXISTING IN THE SAME LOCATION. SYSTEM SHALL BE FURNISHED BY OTHERS AND INSTALLED BY CONTRACTOR. COORDINATED W/ VARIAN INSTALLER AND MMC IT SYSTEMS INSTALLER.
- EXISTING LINAC CITY WATER USE ALARM TO BE MAINTAINED.
- REINSTALL 2" UNDER CABINET LIGHTING REMOVED DURING DEMOLITION IN NEW MILLWORK AND CONNECT LIGHTING BRANCH CIRCUIT VIA EXISTING WALL SWITCH AS INDICATED. COORD. INSTALLATION W/ ARCHITECT.
- REINSTALL 2" UNDER CABINET LIGHTING AND WALL SWITCH REMOVED DURING DEMOLITION IN NEW MILLWORK AND CONNECT LIGHTING BRANCH CIRCUIT AS INDICATED. COORD. INSTALLATION W/ ARCHITECT.
- LOCATION OF EXISTING RELAY JUNCTION BOX LOCATED ABOVE CEILING. RECONFIGURE EXISTING LIGHTING RELAYS AS REQUIRED TO CONTROL SWITCH LEGS FROM THE TABLE CONTROL HANDSET.
- REINSTALL EXISTING 8" COMPACT FLUORESCENT DOWNLIGHT REMOVED DURING DEMOLITION.
- FIXTURE TYPE B1: FURNISH AND INSTALL NEW 3' LONG RECESSED COVE WALL WASH FIXTURE WITH 2' LAMPING (DAY O LITE #JB SERIES OR EQUAL). THE REMAINING UNLAMPED PORTION OF THE FIXTURE SHALL BE FIELD MODIFIED TO FIT AND CREATE A CONTINUOUS COVE AS SHOWN. PROVIDE W/ LUTRON ECO-10 DIMMING BALLAST OR EQUAL, 120V, 1-F17T8 LAMP, 3500K. COORD. INSTALLATION W/ ARCHITECT.
- FURNISH AND INSTALL NEW FLUORESCENT DIMMER SWITCH TO REPLACE EXISTING TOGGLE SWITCH REMOVED DURING DEMOLITION.
- REINSTALL EXISTING EXIT SIGN REMOVED DURING DEMOLITION. RECONNECT TO EXISTING UNSWITCHED LIFE SAFETY BRANCH CIRCUIT SERVING THE SPACE.
- NEW CCTV CAMERA LOCATION. FURNISH AND INSTALL 4" SQUARE JUNCTION BOX WITH 3/4" CONDUIT TO ABOVE CEILING WITH PULLSTRING. SYSTEM SHALL BE FURNISHED BY OTHERS AND INSTALLED BY CONTRACTOR. EXTEND EXISTING SYSTEM WIRING AS REQUIRED. COORDINATE W/ VARIAN INSTALLER AND MMC IT SYSTEMS INSTALLER.
- REINSTALL FIRE ALARM SYSTEM DEVICE REMOVED DURING DEMOLITION. EXTEND EXISTING WIRING AS REQUIRED FOR A COMPLETE AND OPERABLE SYSTEM.
- EXISTING LINAC CONTROL INDICATOR LIGHT TO BE MAINTAINED.
- REINSTALL INTERCOM STATION REMOVED DURING DEMOLITION. EXTEND EXISTING WIRING AS REQUIRED. COORD. LOCATION AND MOUNTING HEIGHT W/ OWNER AND ARCH.
- NEW TEL/DATA DEVICE LOCATION. FURNISH AND INSTALL 4" SQUARE JUNCTION BOX WITH 3/4" CONDUIT TO ABOVE CEILING WITH PULLSTRING. COORD. LOCATION AND MOUNTING HEIGHT W/ OWNER AND ARCH.



A1 LIGHTING PLAN
1/4"=1'-0"



A9 SYSTEMS PLAN
1/4"=1'-0"

144 Fore Street, P.O. Box 618
Portland, Maine 04104
Tel: (207) 772-3846
Fax: (207) 772-1070
www.smri.com

ARCHITECTURE
ENGINEERING
PLANNING
INTERIOR DESIGN
COMMISSIONING

SMRI

STATE OF MAINE
DANIEL J. JARRETT
LICENSED PROFESSIONAL ENGINEER
NO. 9838
9/19/08

MAINE MEDICAL CENTER
LINAC REPLACEMENT PROJECT
22 BRANHALL ST PORTLAND, MAINE

ISSUED FOR CONSTRUCTION
9-19-08

REV	DATE	DESCRIPTION
0	9-19-08	ISSUED FOR CONSTRUCTION

GRAPHIC SCALE:
0' 1'

SCALE: 1/4"=1'-0"

PROJECT MANAGER: CDP
IC/DRAWN BY: CDS
A/E OF RECORD: DJT
CAD FILE: E-103-08134
PROJECT NO: 08134
DATE: 9-19-08
SHEET TITLE:
LIGHTING PLAN AND SYSTEMS PLAN
SHEET No. E-103