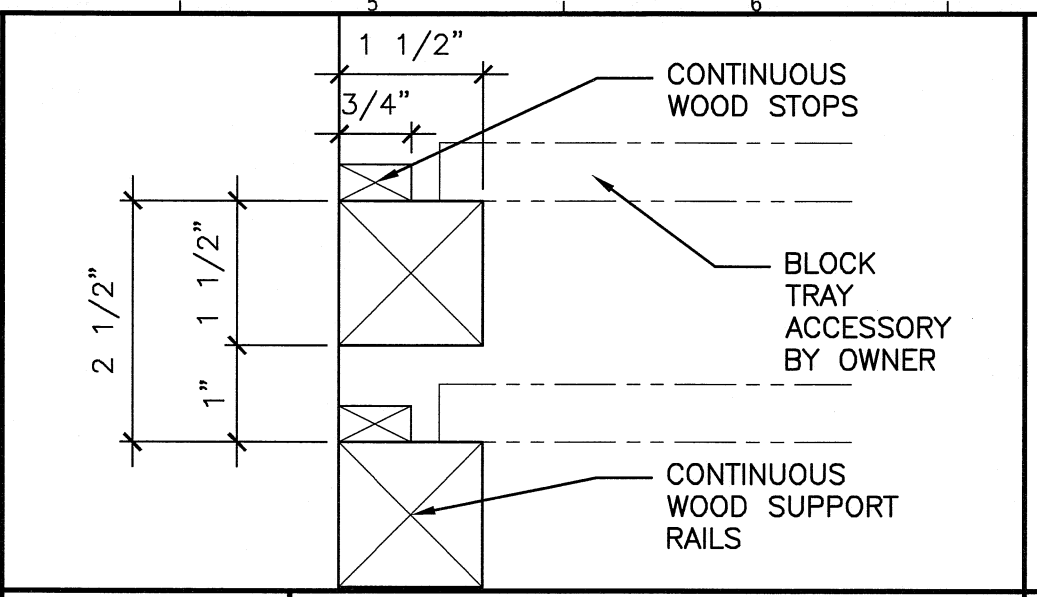
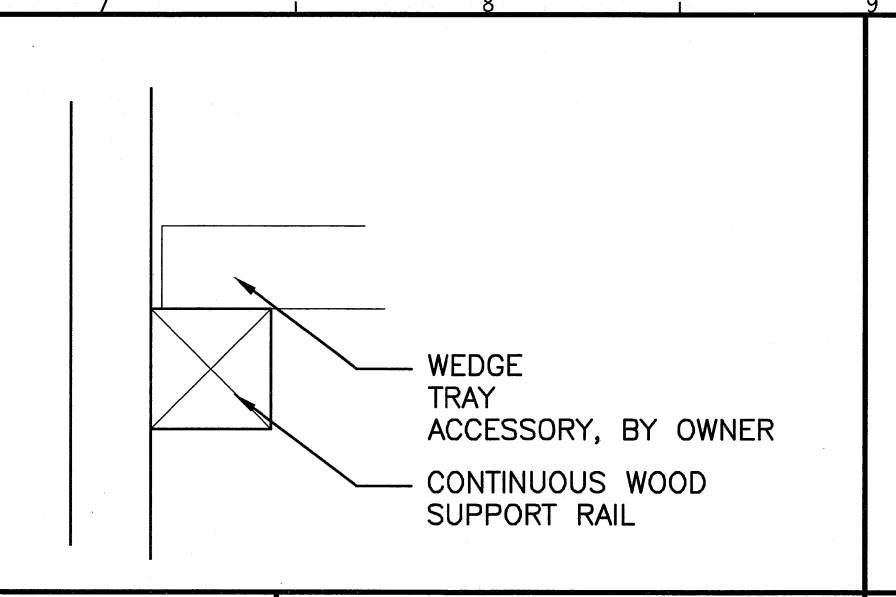


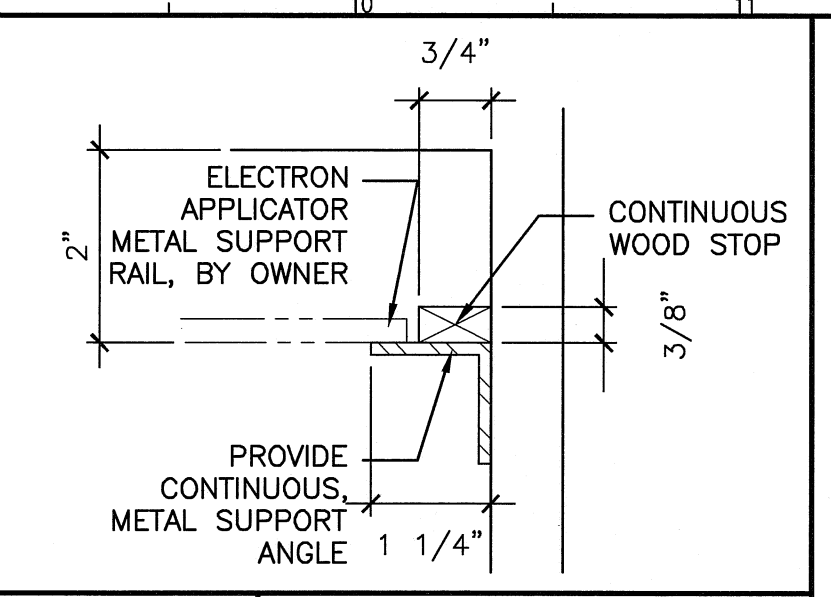
**M1 DETAIL**  
6"=1'-0"



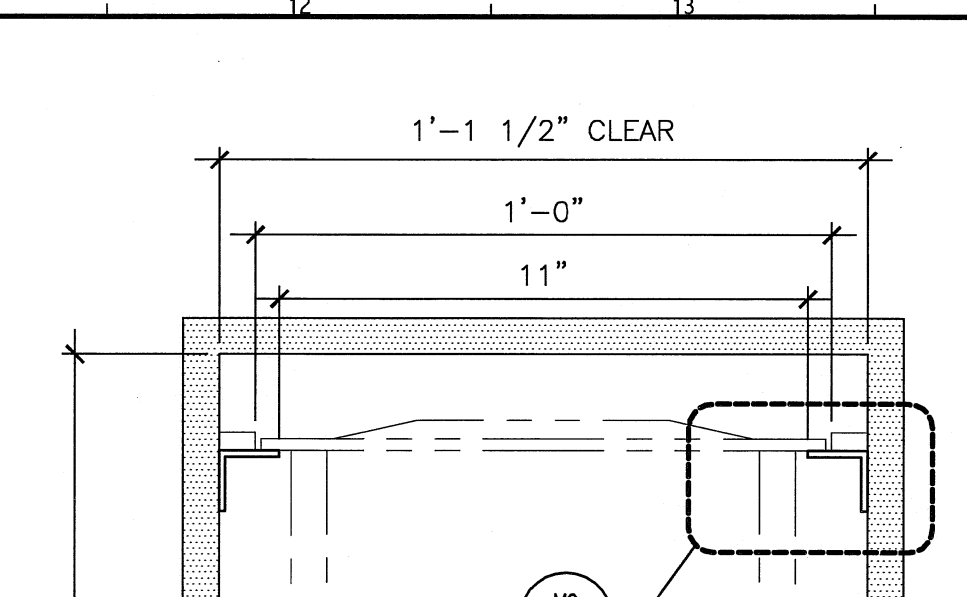
**M4 DETAIL**  
6"=1'-0"



**M7 DETAIL**  
6"=1'-0"



**M9 DETAIL**  
6"=1'-0"



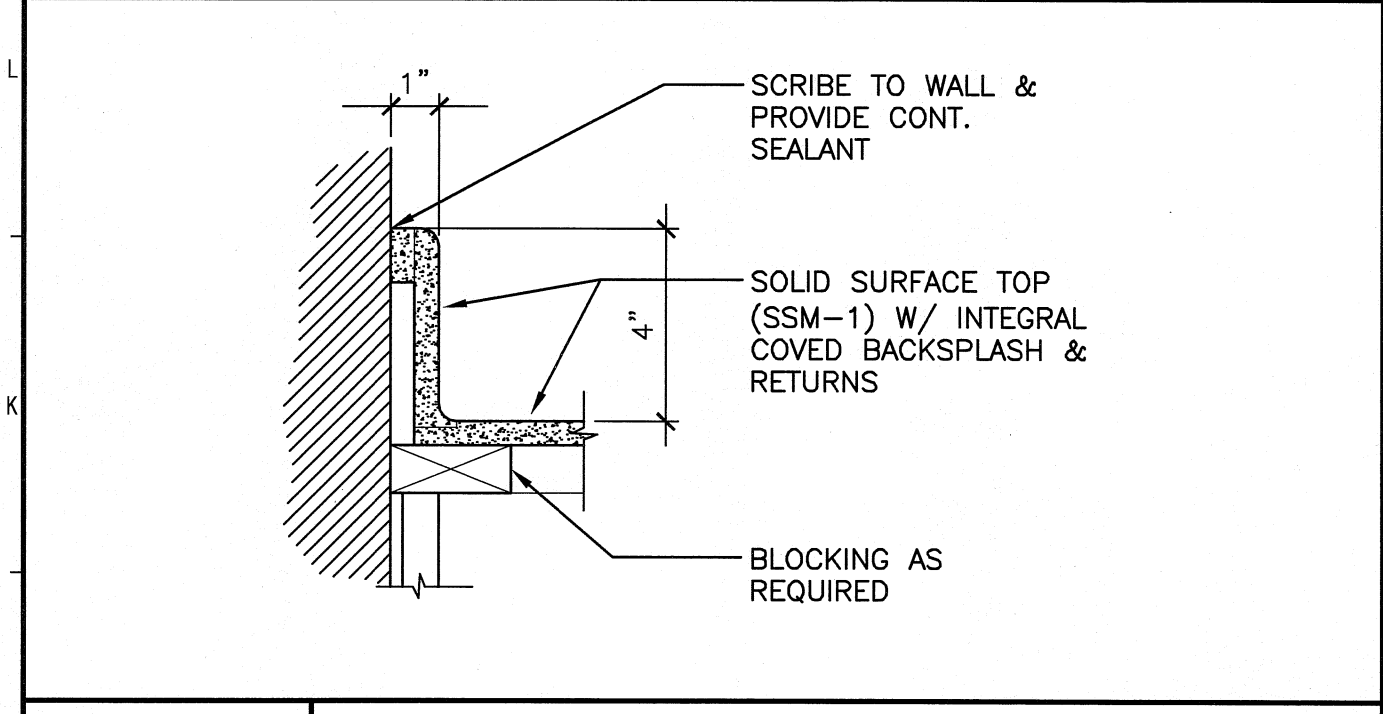
**M12 DETAIL**  
3"=1'-0"

**GENERAL NOTES:**

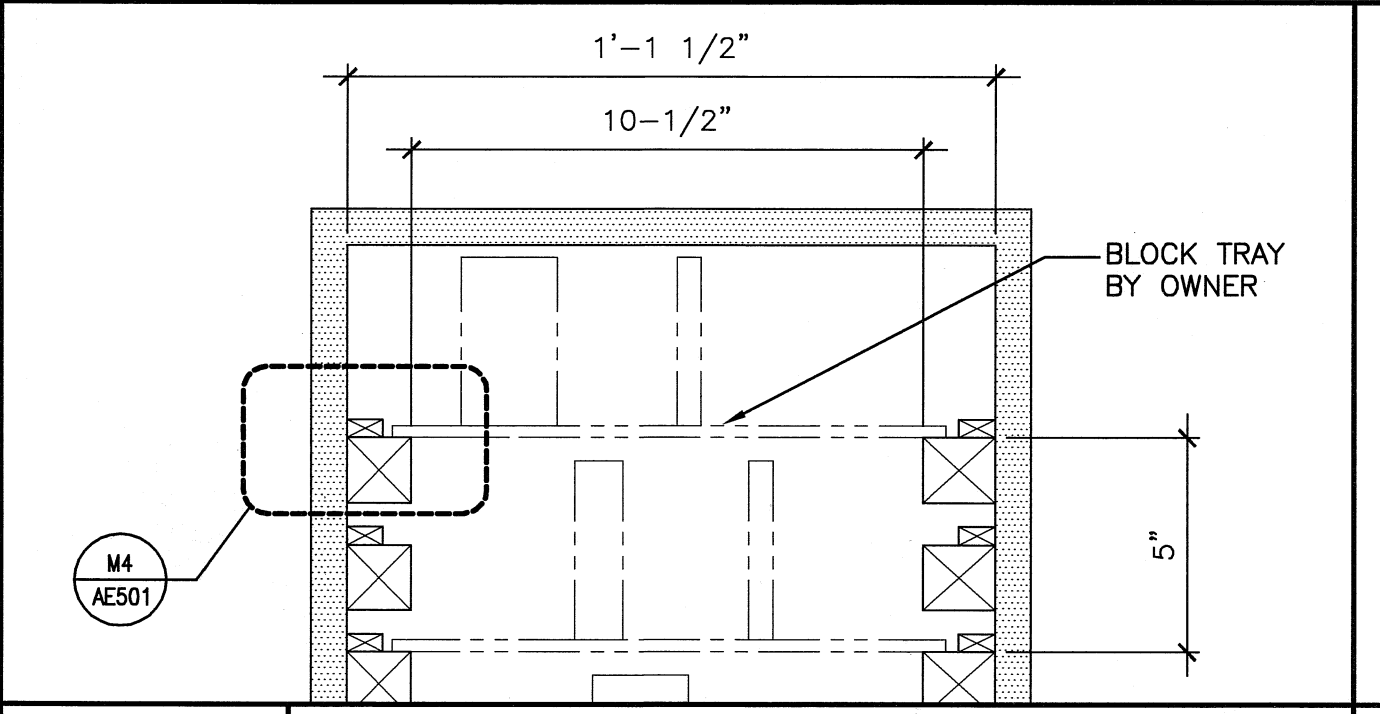
- CONTRACTOR TO FIELD VERIFY ALL DIMENSIONS.
- CONCEALED CABINET INTERIORS TO BE WHITE MELAMINE. EXPOSED CABINET INTERIORS TO MATCH CABINET PLAM.
- ALL DOORS AND DRAWERS SHALL BE EDGE BANDED WITH P-LAM TO MATCH FACE.
- GRAIN DIRECTION OF WOOD-GRAIN P-LAM SHALL BE VERTICAL ON ALL DOORS AND DRAWERS

**CASEWORK HARDWARE:**

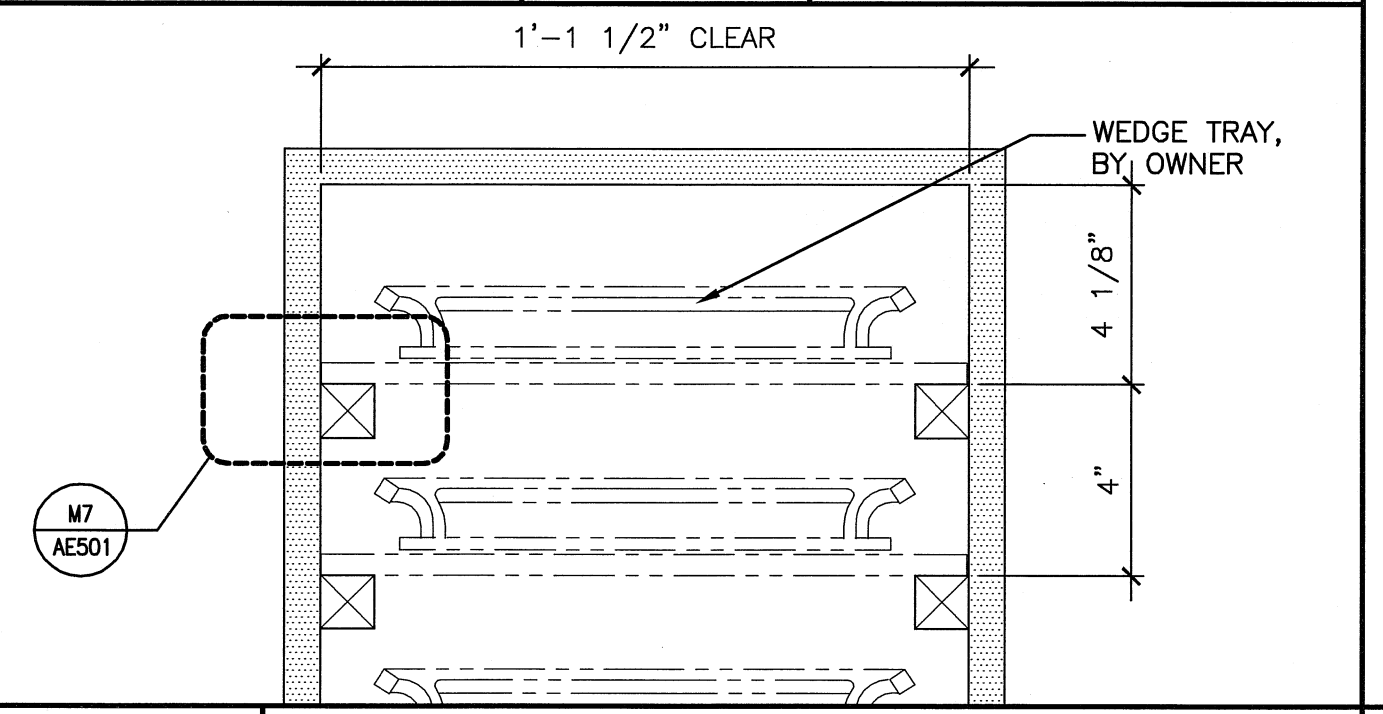
- PROVIDE PRODUCTS LISTED BELOW OR SUBMIT ALTERNATE PRODUCTS FOR APPROVAL:
- SURFACE DOOR PULLS TO BE HAFELE #115.60.602 SATIN FINISHED STAINLESS STEEL BOW PULLS.
- RECESSED DOOR PULLS TO BE HAFELE #151.09.609.
- HINGES TO BE BLUM CLIP TOP 120° CONCEALED EUROPEAN-STYLE HINGE.
- FULL-EXTENSION DRAWER SLIDES TO BE KNAPE & VOGT #8400 SERIES WITH WHITE EPOXY FINISH.
- CLOSET RODS TO BE KNAPE & VOGT #770-5 HEAVY-DUTY 1-3/8" O.D. STEEL TUBE W/ CHROME FINISH. FLANGES TO BE KV #764 & 766.
- BY-PASSING SLIDING DOOR HARDWARE TO BE "HAWA DORADO INFRONT" SYSTEM: HAFELE FITTING SET #406.70.120 WITH UPPER TRACKS AND LOWER GUIDE CHANNELS.
- ADJUSTABLE SHELF PINS TO BE KV #345 NP.
- WORKSTATION SUPPORT BRACKETS TO BE 18"x24" BRACKETS AS MFR'D BY GAMBAS CO.; 11 GAUGE STEEL W/ BLACK POWDER COAT FINISH.



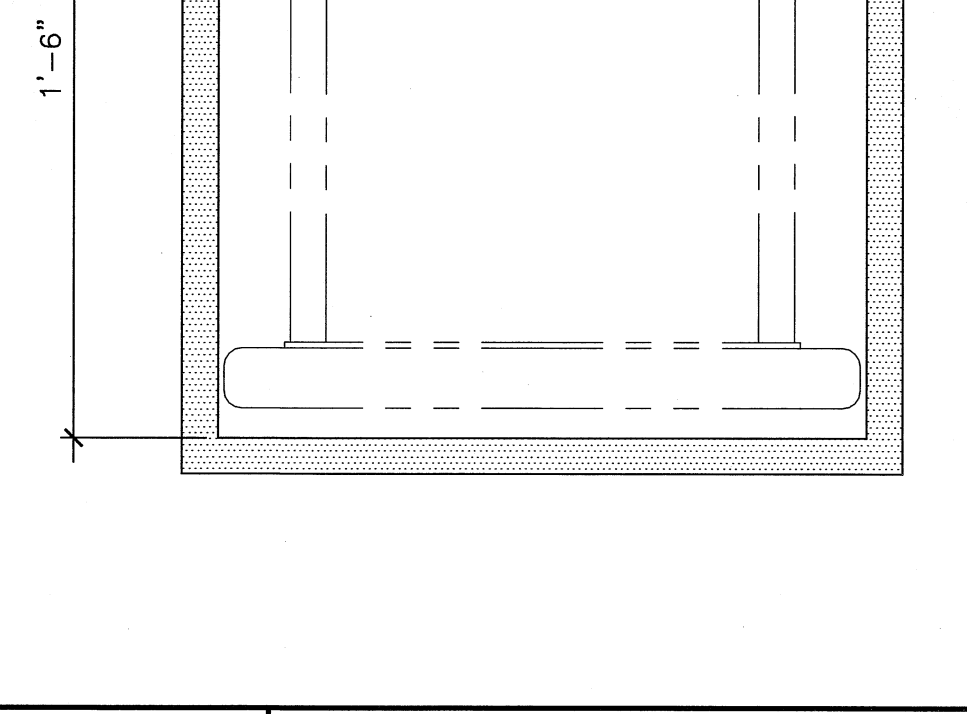
**J1 DETAIL**  
3"=1'-0"



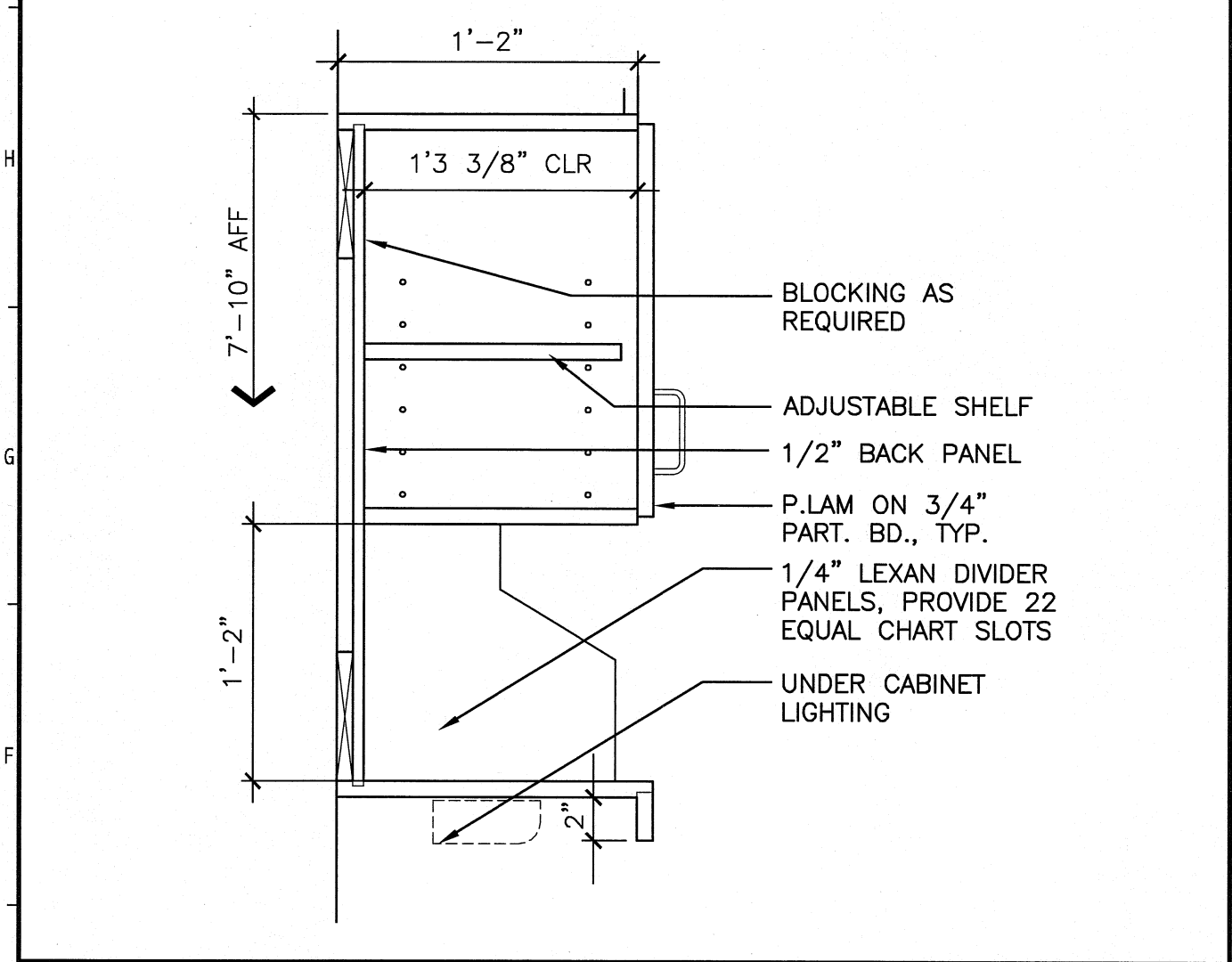
**M4 DETAIL**  
3"=1'-0"



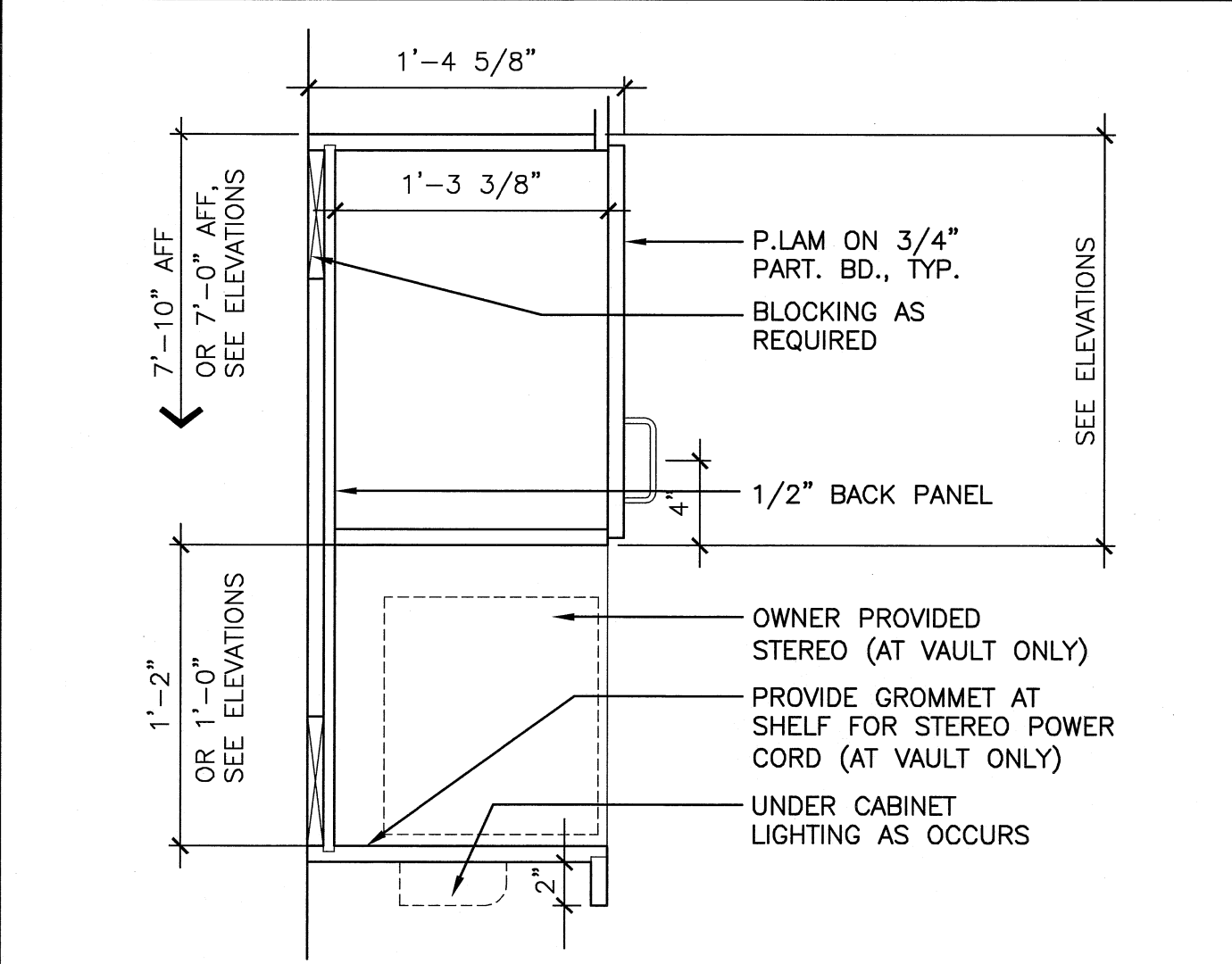
**M8 DETAIL**  
3"=1'-0"



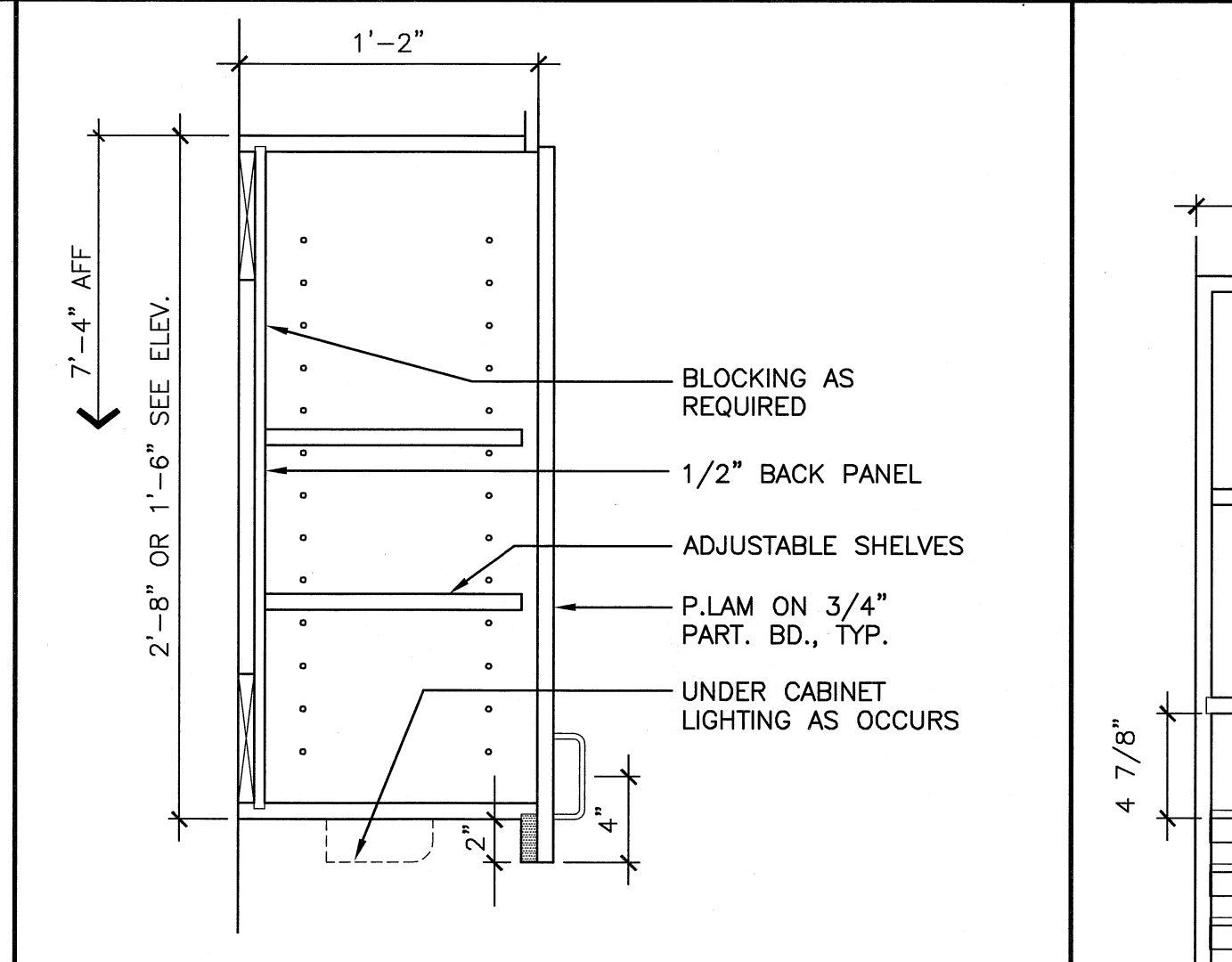
**M15 NOTES**  
N.T.S.



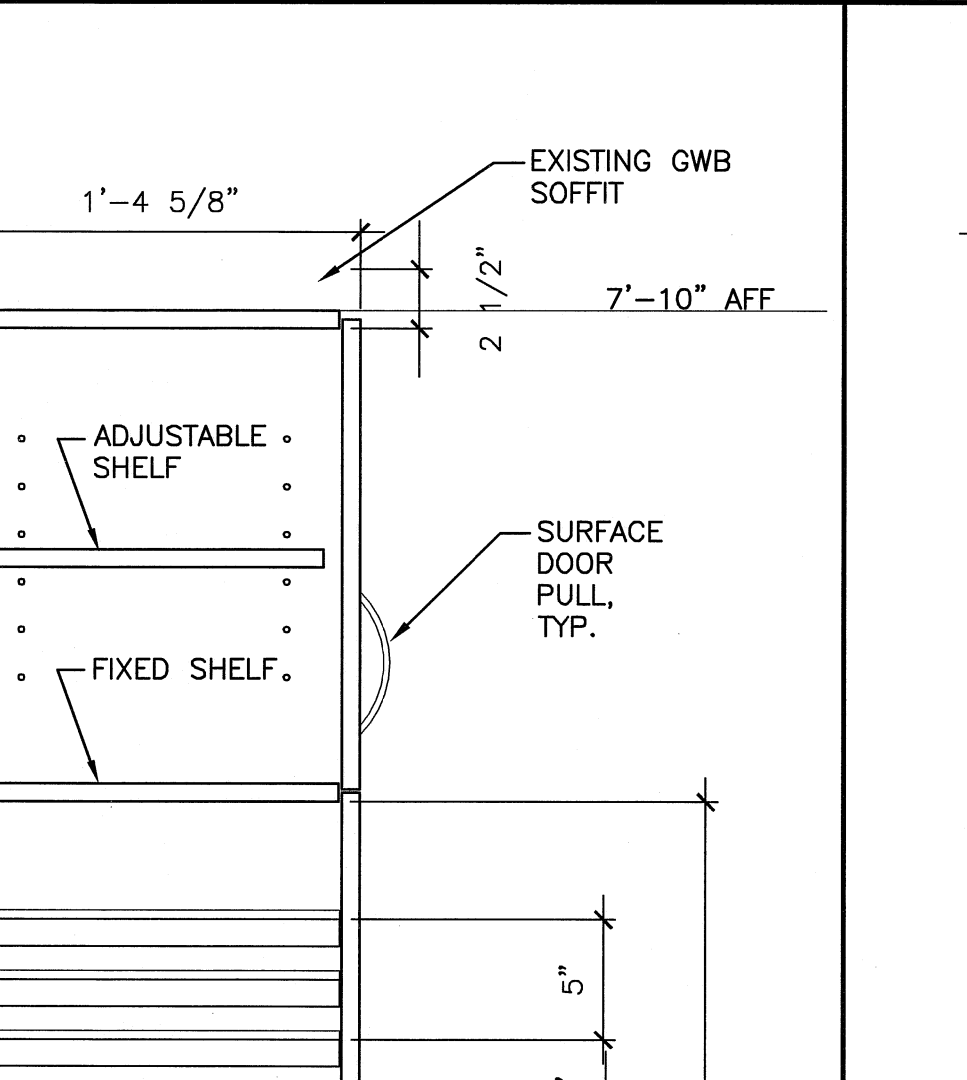
**E1 SECTION**  
1-1/2"=1'-0"



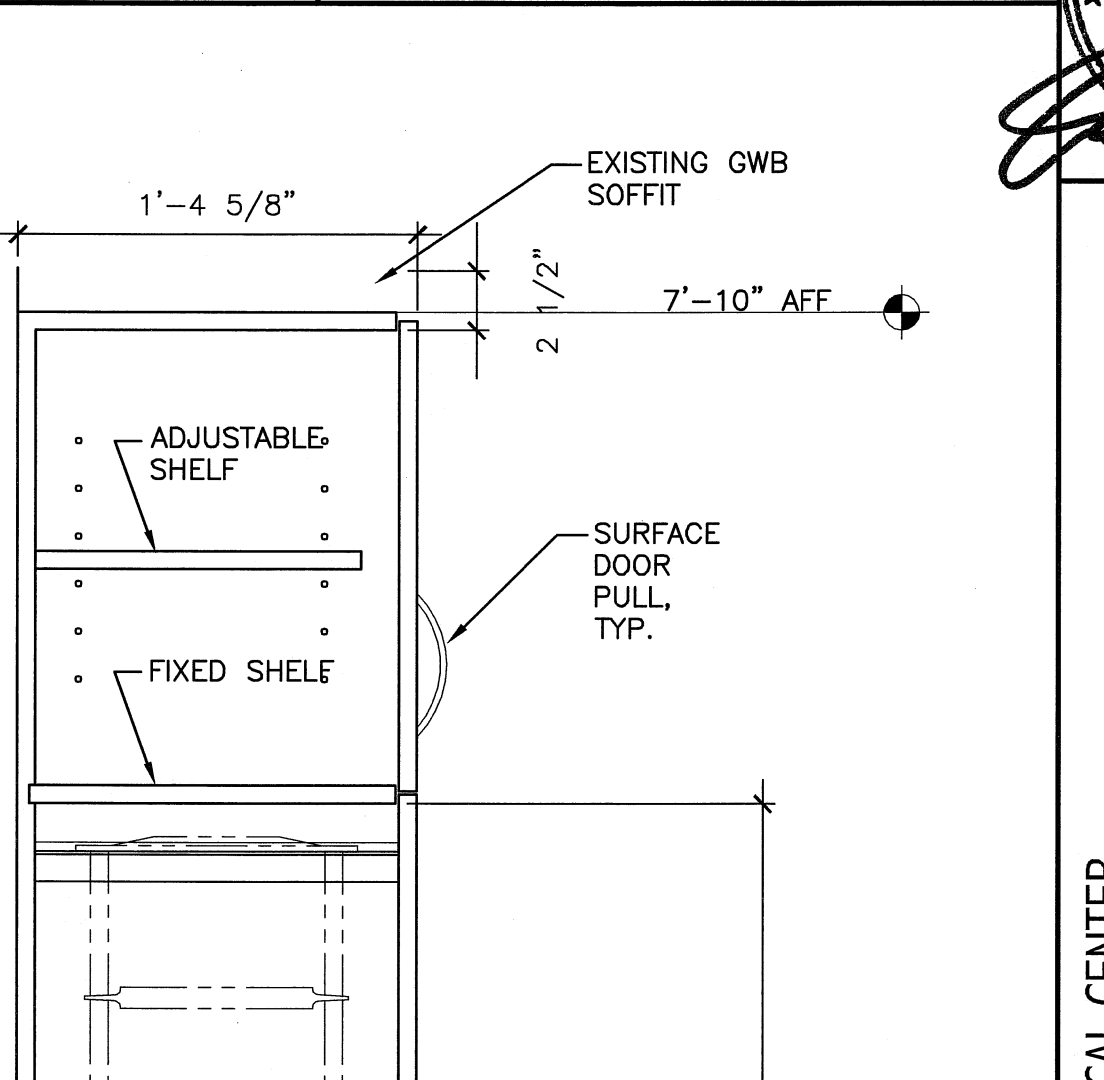
**E4 SECTION**  
1-1/2"=1'-0"



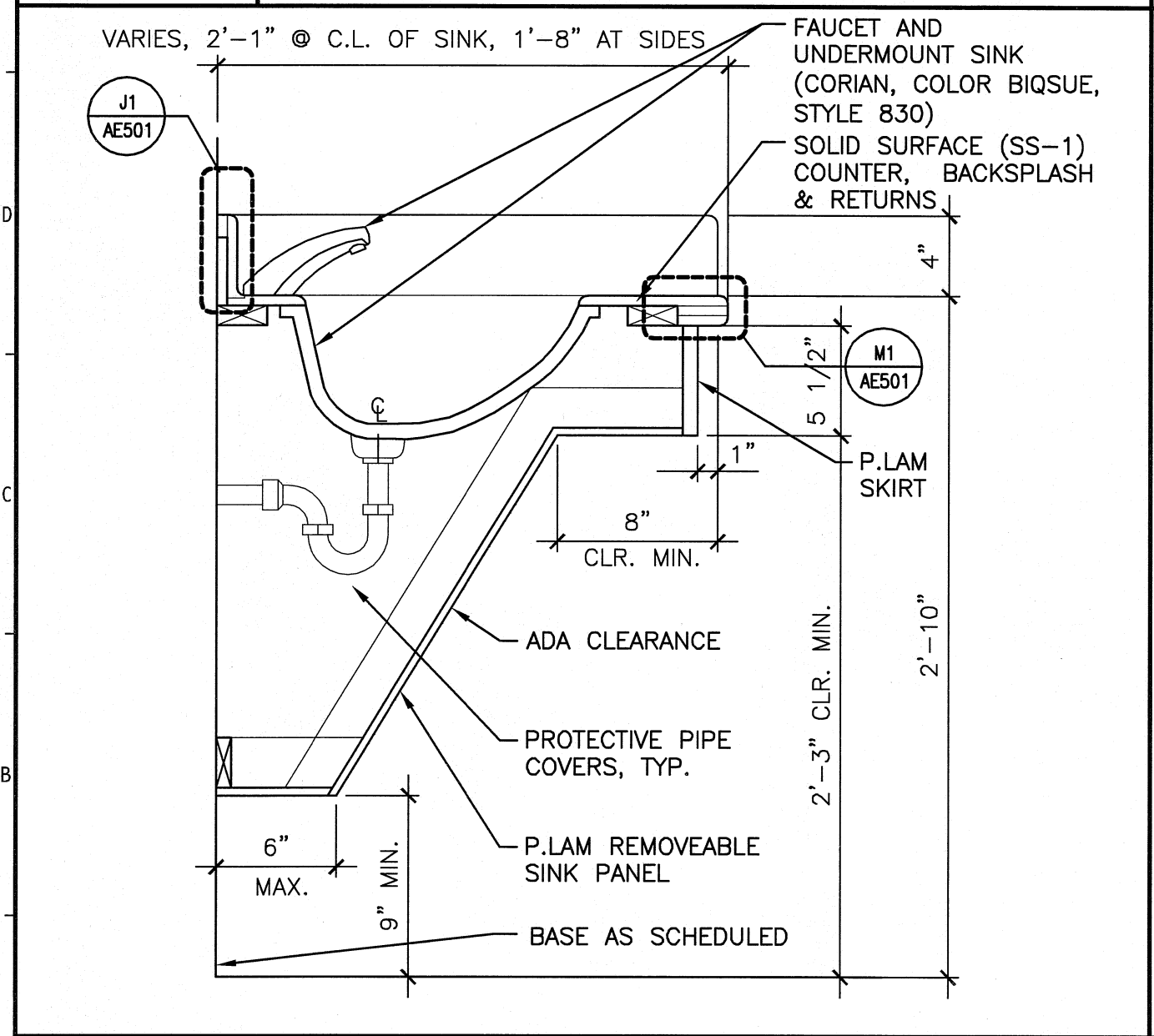
**E8 SECTION**  
1-1/2"=1'-0"



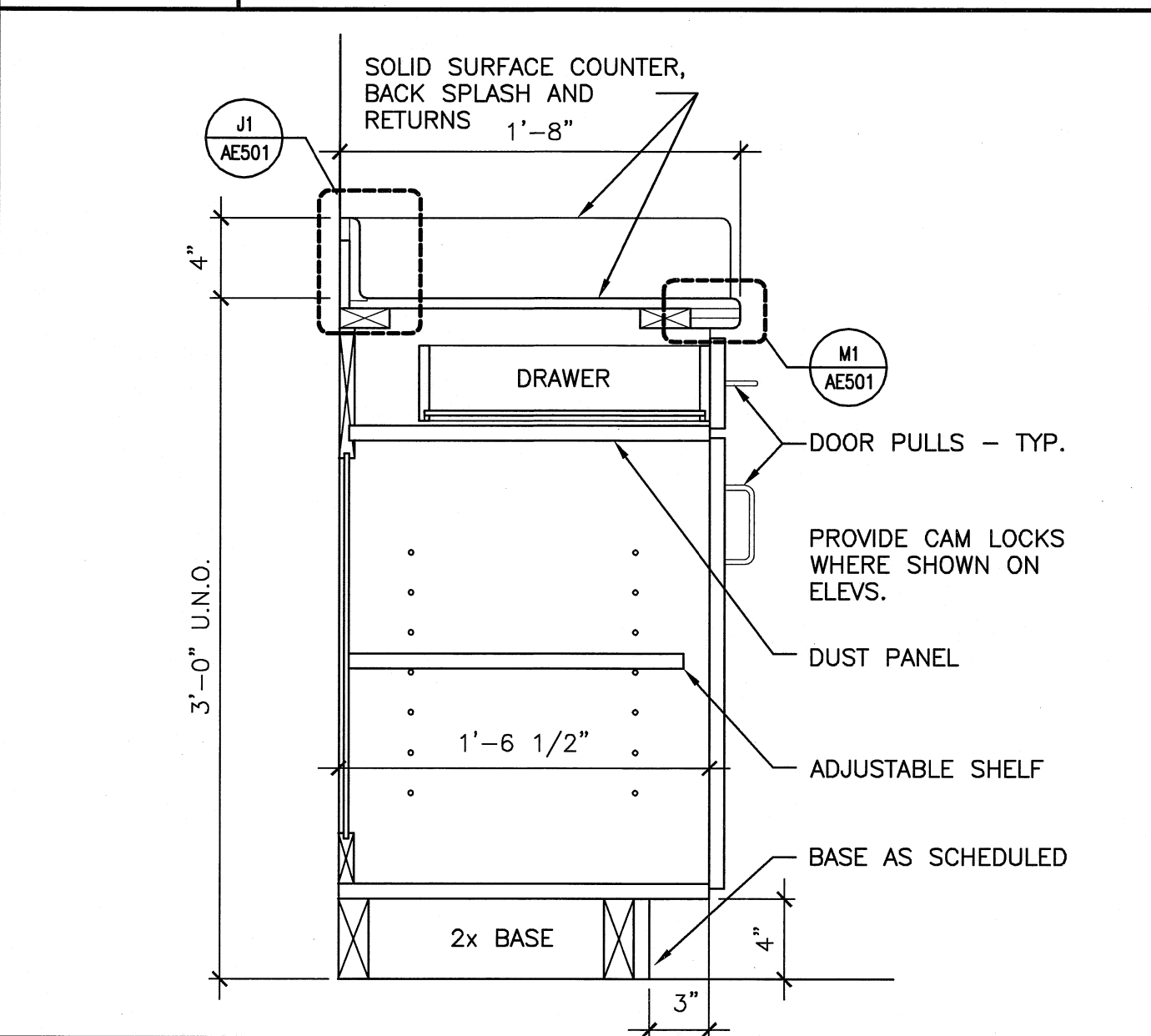
**A12 SECTION**  
1-1/2"=1'-0"



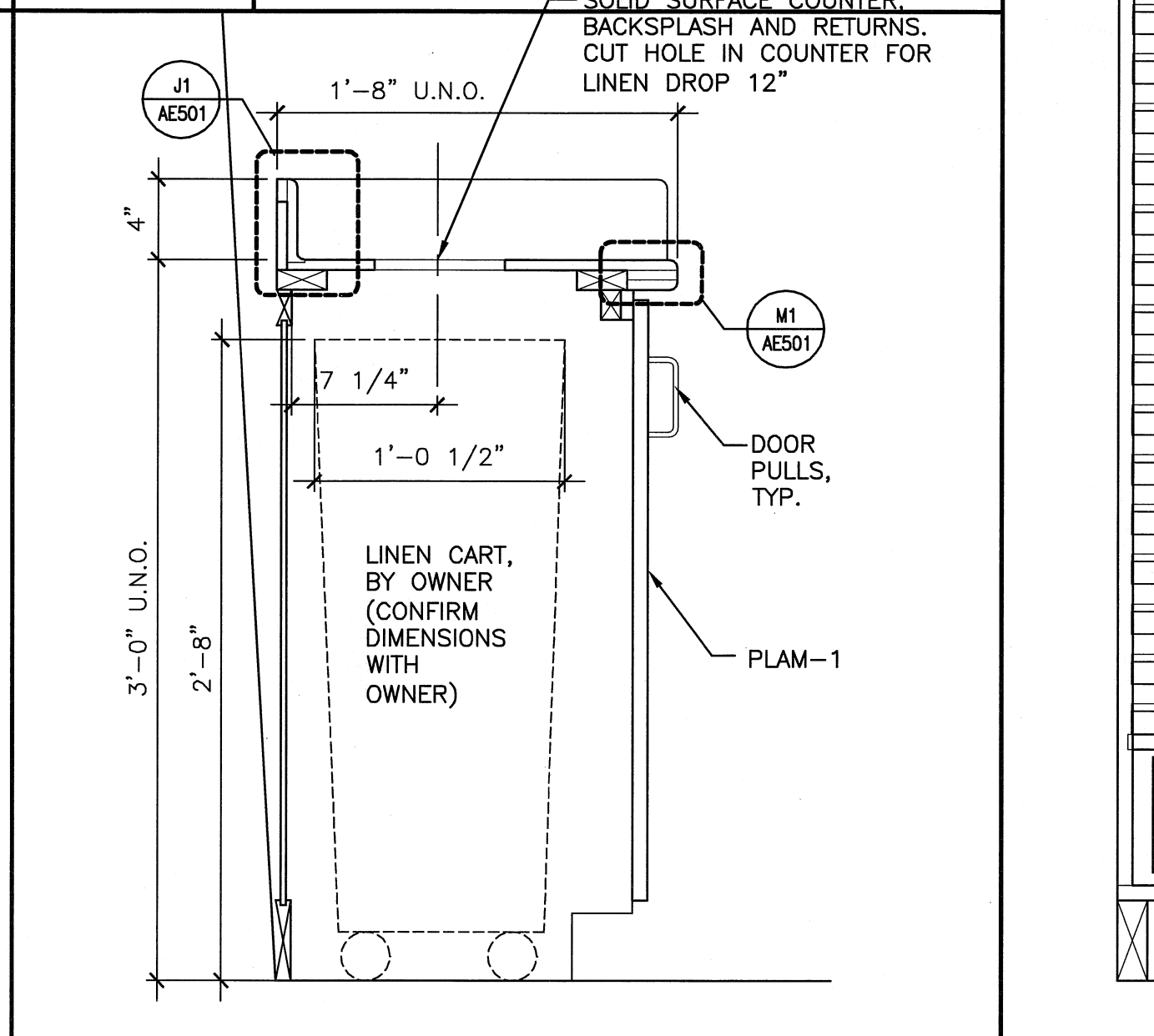
**A14 SECTION**  
1-1/2"=1'-0"



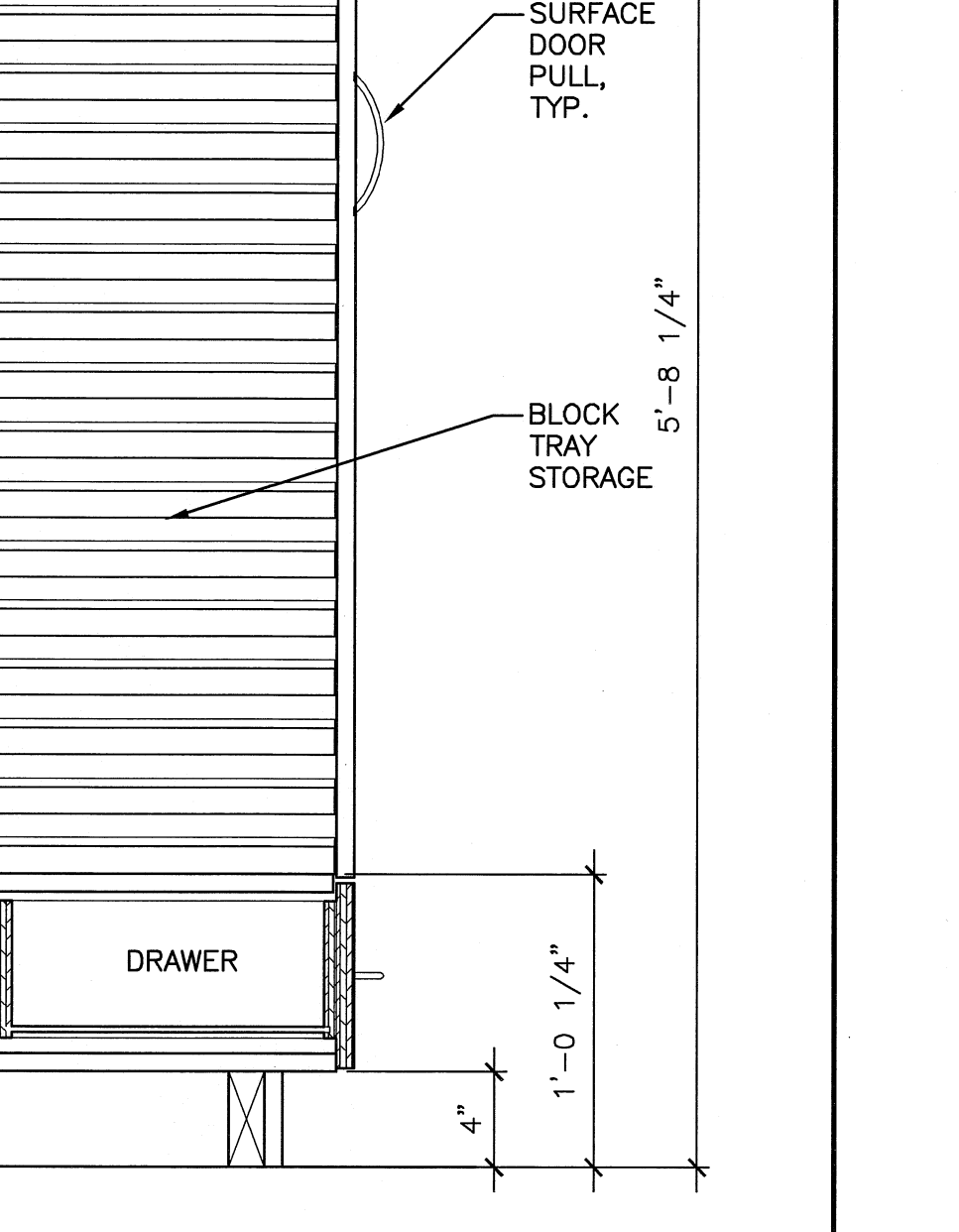
**A1 SECTION**  
1-1/2"=1'-0"



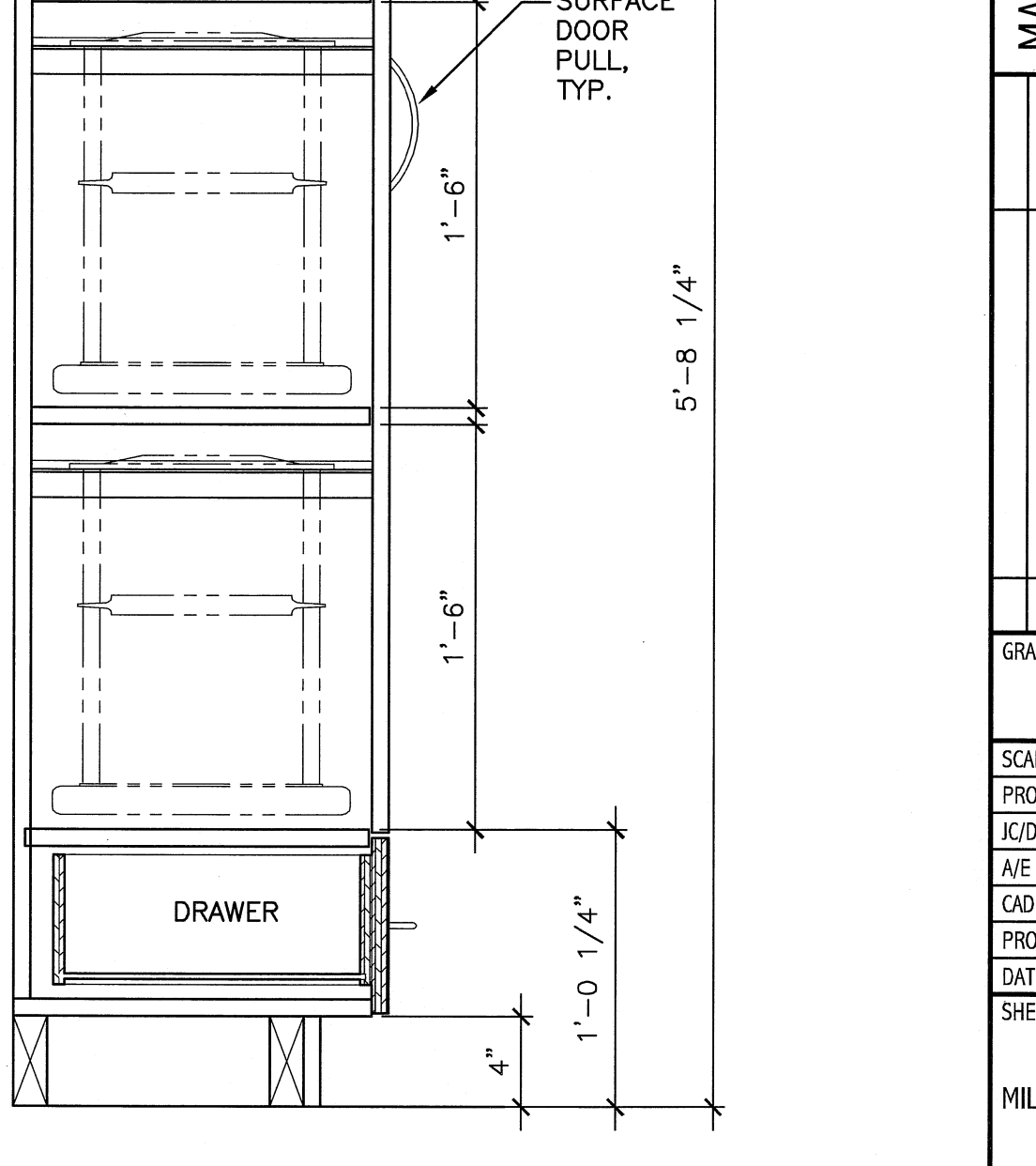
**A4 SECTION**  
1-1/2"=1'-0"



**A8 SECTION**  
1-1/2"=1'-0"



**A12 SECTION**  
1-1/2"=1'-0"



**A14 SECTION**  
1-1/2"=1'-0"

144 Fore Street, P.O. Box 618  
Portland, Maine 04104  
Tel: (207) 773-3846  
Fax: (207) 773-0270  
www.smartinc.com

ARCHITECTURE  
ENGINEERING  
PLANNING  
INTERIOR DESIGN  
COMMISSIONING

**SMART**

LICENSED ARCHITECT  
CRAIG DAVID  
PIPER  
No. 2692  
STATE OF MAINE

MAINE MEDICAL CENTER  
LINAC REPLACEMENT PROJECT  
22 BRANHALL ST. PORTLAND, MAINE

ISSUED FOR CONSTRUCTION  
9-19-08

GRAPHIC SCALE:  
0" 1"

SCALE: AS NOTED

PROJECT MANAGER: CDP  
JC/DRAWN BY: MDR  
A/E OF RECORD: CDP  
CAD FILE: A501-08134  
PROJECT NO.: 08134  
DATE: 9-19-08

SHEET TITLE:  
MILLWORK SECTIONS

SHEET No. **A501**