

REFLECTED CEILING NOTES

1. FIRE SPRINKLERS SHALL BE LOCATED IN ALIGNMENT WITH OTHER CEILING ITEMS, TYPICALLY.
2. FIRE SPRINKLERS SHALL BE CENTERED IN CEILING TILE.
3. FIRE SPRINKLERS SHALL BE PLACED TO COORDINATE WITH LIGHT FIXTURE POSITIONS INDICATED.
4. ALIGN CEILING ITEMS AS SHOWN, WITH COMMON CENTERLINES, TYPICALLY. CENTER ITEMS IN CEILINGS, OR IN AREAS UNLESS INDICATED OTHERWISE.
5. REFER TO ROOM FINISH SCHEDULE FOR CEILING HEIGHTS AND CEILING FINISHES TO BE PROVIDED.
6. EXCEPT WHERE INDICATED, CENTER CEILING GRIDS IN ROOMS. USE HALF TILES OR GREATER @ PERIMETERS AS POSSIBLE.
7. PROVIDE ACCESS PANELS AS REQUIRED IN GWB CEILINGS FOR ACCESS TO MECHANICAL VALVES/ CONTROLS. REFERENCE MECHANICAL.

KEYED NOTES:

- A BACK-LIT CEILING ART WORK PANEL
- B CEILING MOUNTED LASER
- C LINAC CAMERA
- D FUTURE RESPIRATORY GATING CAMERA AT CEILING.
- E WALL (RECESSED) LASER.

SYMBOL LEGEND

- 2x2 SUSPENDED CEILING PANEL AND GRID ASSEMBLY.
- 2x2 SUSPENDED ACT 5 ("WOOD LOOK") CEILING PANEL AND GRID ASSEMBLY.
- GWB CEILING.
- 2x4 LAY-IN LIGHT FIXTURE.
- DOWN LIGHT.
- CEILING MOUNTED EXIT LIGHT.
- RETURN AIR GRILLE.
- SUPPLY AIR GRILLE.
- EXHAUST AIR GRILLE.

PLAN NOTES:

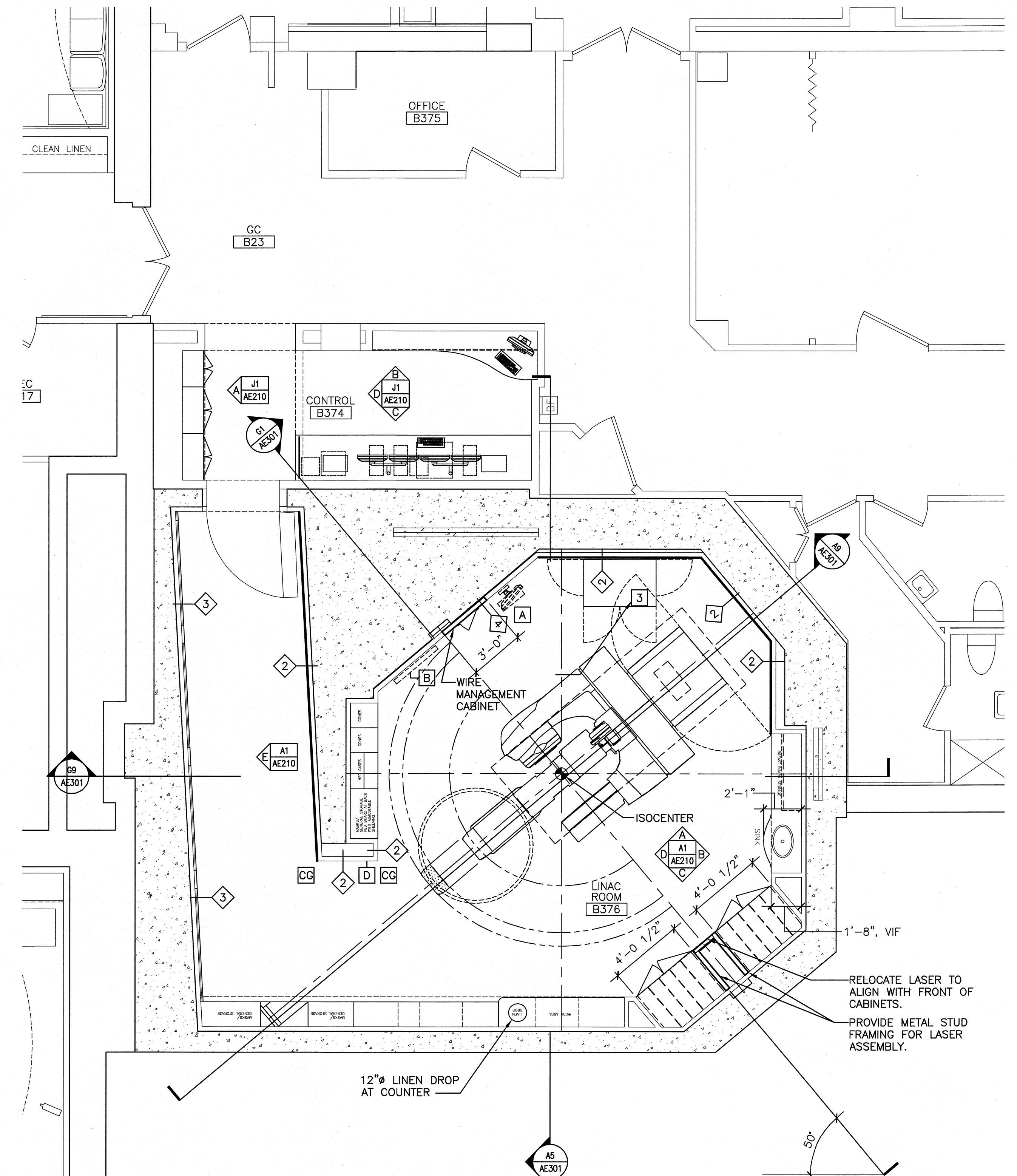
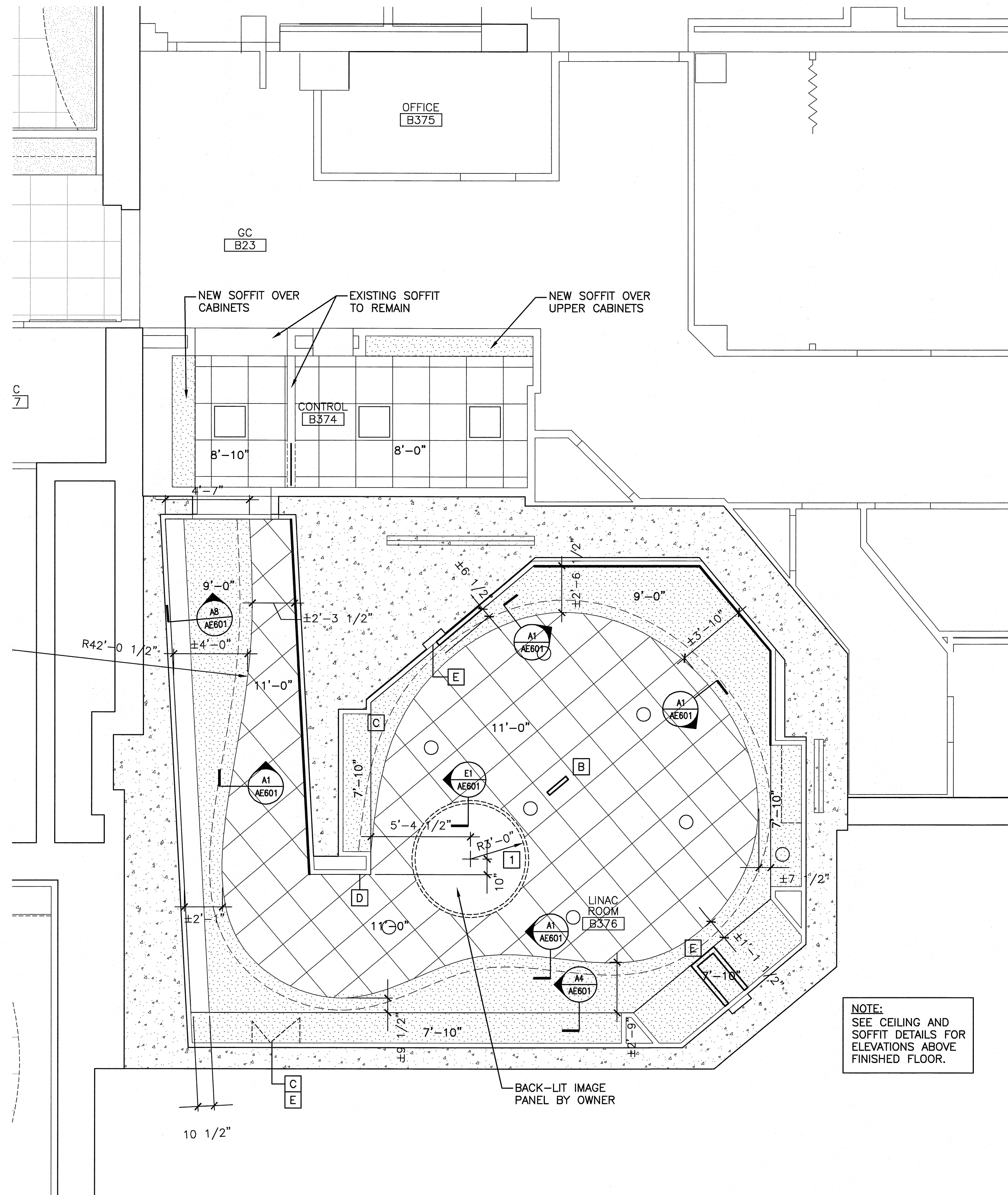
1. SEE GI001 FOR GENERAL NOTES
2. EXISTING INTERIOR PARTITIONS TO REMAIN EXCEPT WHERE WORK REQUIRES CUTTING, PATCHING AND FINISHING OF WALL TO ACCOMMODATE UTILITY RELOCATION.
3. *

KEYED NOTES:

- A WALL MOUNTED COMPUTER
- B VIEWBOX, RECESS INTO FABRIC WRAPPED PANELS.
- C MODULATOR CABINET, BY OWNER.

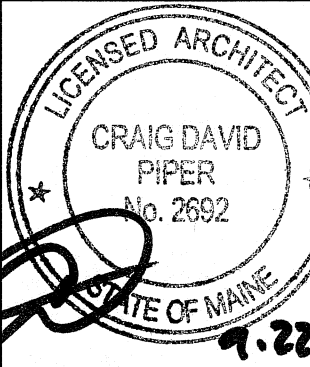
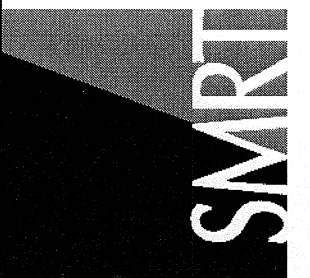
WALL LEGEND

- CG CORNER GUARD: RECESSED, 90 DEGREE
- 2 APPLY AN ADDITIONAL LAYER OF 5/8" GWB TO EXISTING WALL FURRING (IN PLACE OF DEMO'ED FABRIC PANELS).
- 3 TEXTURED WALL PANELS ABOVE CHAIR RAIL, 5/8" GWB BELOW.
- 4 REMOVE EXISTING FABRIC WRAPPED PANEL, WRAP WITH NEW FABRIC AND REINSTALL.



144 Fore Street, P.O. Box 618
Portland, Maine 04104
Tel: (207) 772-2846
Fax: (207) 772-1070
www.damc.com

ARCHITECTURE
ENGINEERING
PLANNING
INTERIOR DESIGN
COMMISSIONING



MAINE MEDICAL CENTER
LINAC REPLACEMENT PROJECT
22 BROADHILL ST. PORTLAND, MAINE
ISSUED FOR CONSTRUCTION
9-19-08

REV	DESCRIPTION	DATE
0	ISSUED FOR CONSTRUCTION	9-19-08

GRAPHIC SCALE:
0' 1'
SCALE: 1/4"=1'-0"
PROJECT MANAGER: CDP
IC/DRAWN BY: MDR
A/E OF RECORD: CDP
CAD FILE: AE101-08134
PROJECT NO: 08134
DATE: 9-19-08
SHEET TITLE:

PARTIAL FLOOR PLAN & REFLECTED CEILING PLAN

SHEET No. AE101

A1 PARTIAL REFLECTED CEILING PLAN

1/4"=1'-0"

A9 PARTIAL FLOOR PLAN

1/4"=1'-0"

*