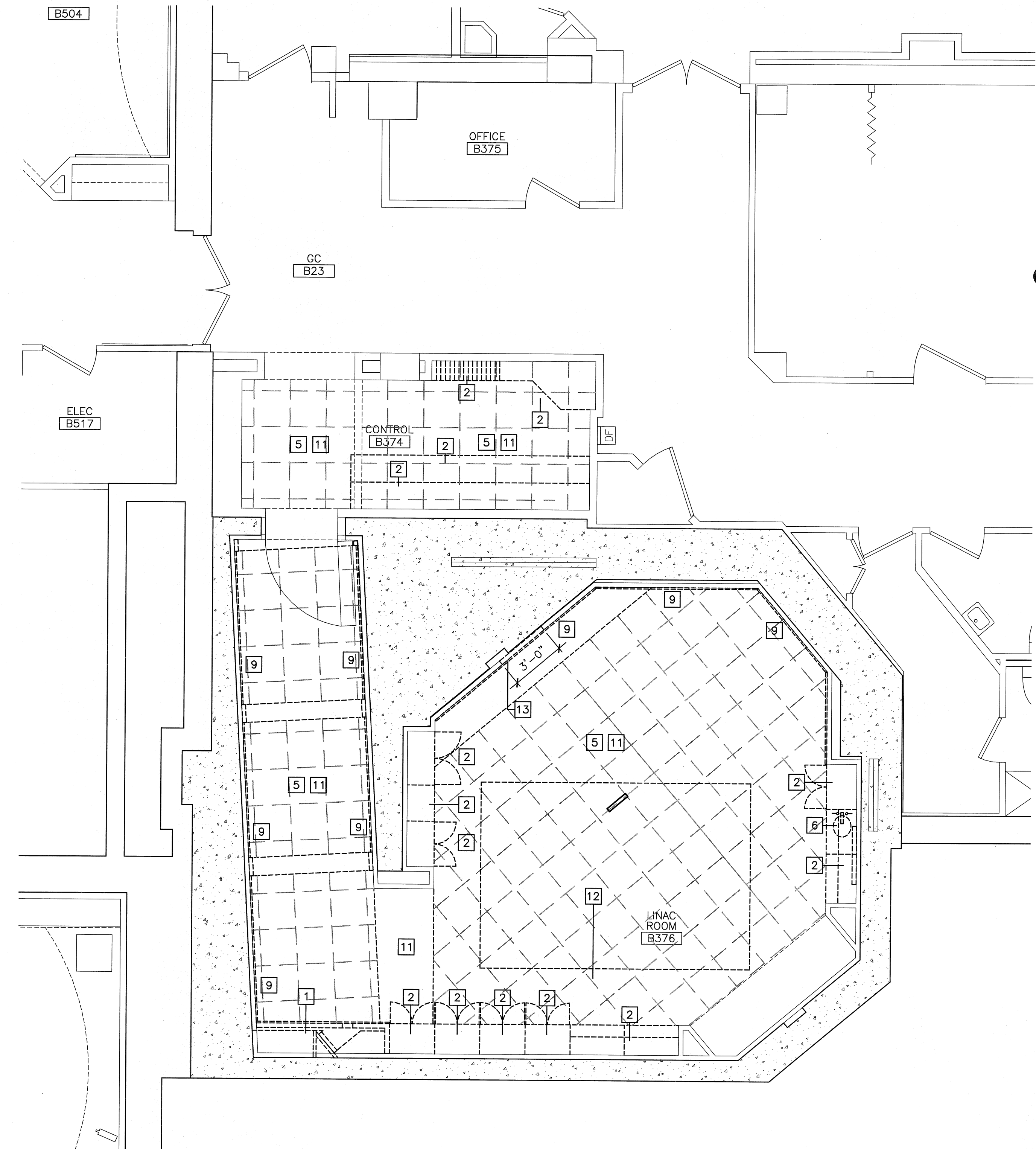


**GENERAL DEMOLITION NOTES:**

1. CONTACT ARCHITECT THROUGH RFI WITH QUESTIONS OF UNIDENTIFIED OBJECTS THAT WILL BE REQUIRED TO BE REMOVED.
2. COORDINATE EXTENT OF DEMOLITION WITH LOCATIONS OF PARTITIONS DESCRIBED ON PLANS AND WITH LOCATIONS OF FINISHES NOTED AS EXISTING TO REMAIN.
3. ANY WALL, PARTITION OR SURFACE DISTURBED BECAUSE OF NEW WORK OR DEMOLITION SHALL BE PATCHED AND FINISHED CONTINUOUSLY TO THE NEAREST CORNER UNLESS NOTED OTHERWISE, MATCH EXISTING ADJACENT CONSTRUCTION FINISHES, CONTINUITY AND FIRE RATINGS UNLESS NOTED OTHERWISE.
4. PROTECT ALL FINISHES, MATERIALS AND EQUIPMENT NOTED AS EXISTING TO REMAIN. CONTRACTOR SHALL BE RESPONSIBLE TO REPLACE ALL FINISHES, MATERIALS AND EQUIPMENT DAMAGED DURING CONSTRUCTION.
5. CLEARLY IDENTIFY & TAG MECHANICAL PLUMBING/ELECTRICAL FIXTURES OR EQUIPMENT THAT ARE STILL IN USE PRIOR TO DEMOLITION TO AVOID ACCIDENTAL REMOVAL.
6. SEE M.E.P DRAWINGS FOR THE SCOPE OF DEMOLITION IN THOSE DISCIPLINES.
7. FOR EXTENTS OF CEILING GRID REMOVALS AND ADJUSTMENTS REFER TO REFLECTED CEILING PLANS.
8. DIMENSIONS INDICATED ± ARE EXISTING CONDITION DIMENSIONS TO BE VERIFIED IN FIELD.

**DEMOLITION KEY NOTES:**

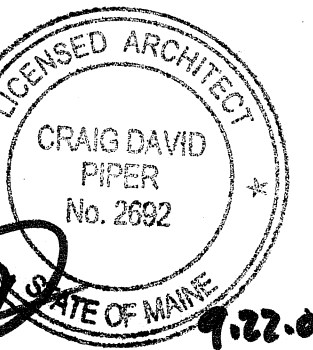
- 1 REMOVE PARTITION COMPLETE.
- 2 REMOVE EXISTING CASEWORK/LOCKERS COMPLETE.
- 3 REMOVE DOOR, FRAME & HARDWARE COMPLETE AND CO-ORDINATE WITH OWNER THOSE ITEMS TO BE SALVAGED PRIOR TO REMOVAL.
- 4 REMOVE PLUMBING FIXTURE, CAP FLUSH WITH EXISTING WALL OR FLOOR, COORDINATE WITH OWNER THOSE ITEMS TO BE SALVAGED PRIOR TO REMOVAL.
- 5 REMOVE EXISTING FLOORING SYSTEM COMPLETE. PREPARE FOR NEW FLOORING SYSTEM.
- 6 REMOVE EXISTING FIXTURE. REFERENCE MECHANICAL/ELECTRICAL.
- 7 EXISTING CEILING SYSTEM TO BE REMOVED & REPLACED TO ALLOW MECHANICAL WORK TO BE PERFORMED.
- 8 REMOVE EXISTING WALL FURRING, REMOVE ALL FASTENERS, OTHER MATERIALS AND CLEAN AND PREPARE THE EXPOSED CMU WALL.
- 9 REMOVE WOOD RUB RAILS, SALVAGE FOR REUSE.
- 10 REMOVE FINISH FLOOR MATERIAL (IF ANY) & BASE. PREPARE SURFACE FOR NEW FINISHES AS REQUIRED BY SCHEDULE & SPECS.
- 11 REMOVE CEILING ASSEMBLY COMPLETE. COORDINATE EXTENTS OF REMOVAL WITH PARTITION LOCATIONS AND EXISTING FINISHES TO REMAIN.
- 12 REMOVE EXISTING CEILING FEATURE/ART WORK AND STORE FOR OWNER.
- 13 REMOVE PORTION OF EXISTING FURRED OUT PARTITION, COORDINATE WITH REQUIREMENTS FOR NEW ACCESS PANEL COMPARTMENT.
- 14 REMOVE EXISTING "LEAF" ARTWORK, CONFIRM WITH OWNER IF THIS WILL BE SALVAGED/RELOCATED.
- 15 REMOVE MISC. WOODWORK AT CEILING.



144 Fore Street P.O. Box 610  
Portland, Maine 04104  
Tel: (207) 772-2846  
Fax: (207) 772-1070  
www.smartinc.com

ARCHITECTURE  
ENGINEERING  
PLANNING  
INTERIOR DESIGN  
COMMISSIONING

**SMART**



MAINE MEDICAL CENTER  
LINAC REPLACEMENT PROJECT  
22 SPRINGALL ST PORTLAND, MAINE  
ISSUED FOR CONSTRUCTION  
9-19-08

REV	DESCRIPTION	DATE
0	ISSUED FOR CONSTRUCTION	9-19-08

GRAPHIC SCALE:  
0" 1"

SCALE: 1/4"=1'-0"  
PROJECT MANAGER: CDP  
JC/DRAWN BY: MDR  
A/E OF RECORD: CDP  
CAD FILE: AD101-08134  
PROJECT NO: 08134  
DATE: 9-19-08

SHEET TITLE:  
PARTIAL DEMOLITION PLAN

SHEET No. AD101

A5 PARTIAL DEMOLITION PLAN

1/4"=1'-0"

\*

\*

\*

\*