

- General Notes:
- SEE ARCH. DRAWINGS FOR ROOFING DETAILS.
  - SEE ARCH. DRAWINGS FOR ROOFING DETAILS.
  - SEE ARCH. DRAWINGS FOR ROOFING DETAILS.
  - SEE ARCH. DRAWINGS FOR ROOFING DETAILS.

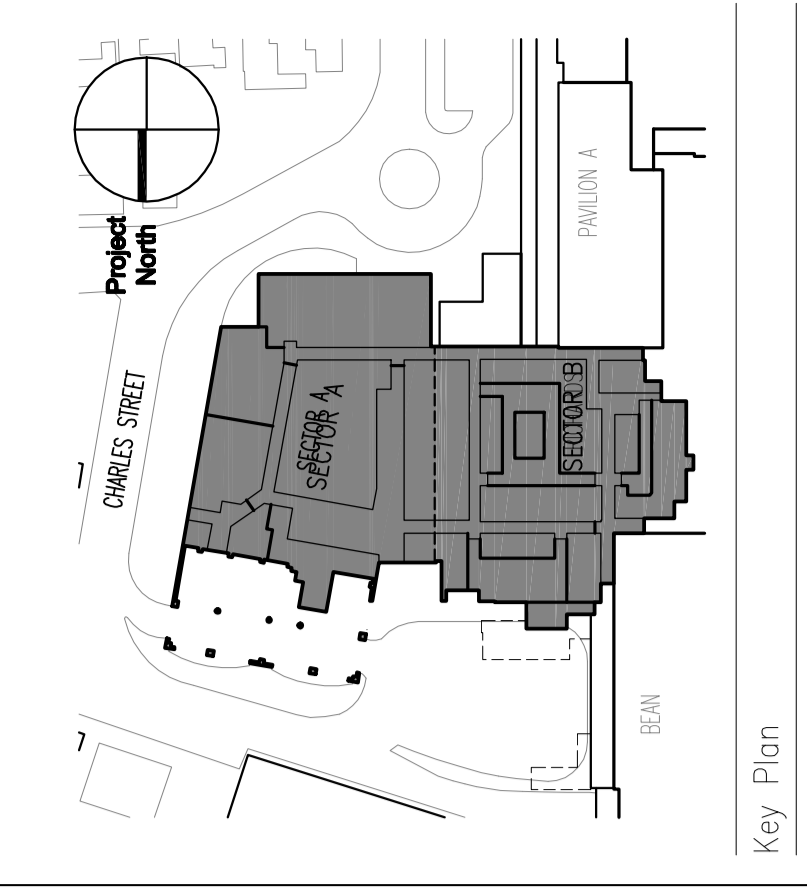
- LEGEND GRID LINES:
- F.5 EXISTING ED EXPANSION (1997)
  - A EXISTING RICHARDS BUILDING (1966)
  - 11 EXISTING BEAN BUILDING (1983)
  - A EXISTING PEDESTRIAN FOOT BRIDGE & LOBBY CONNECTORS (2005)
  - C EXISTING PARKING GARAGE (2005)

**SIMPSON GUMPERTZ & HEGER**  
 Engineering of Structures  
 and Building Enclosures

Boston  
 Los Angeles  
 San Francisco  
 Washington, DC

Simpson Gumpertz & Heger Inc.  
 41 Seyon Street, Building 1, Suite 500  
 Boston, MA 02111  
 Tel: 617.552.8200 Fax: 617.552.3400 www.sgh.com

MARK	ISSUE DATE	DESCRIPTION
BID	12/14/07	BID SET
ISSUE LOG		



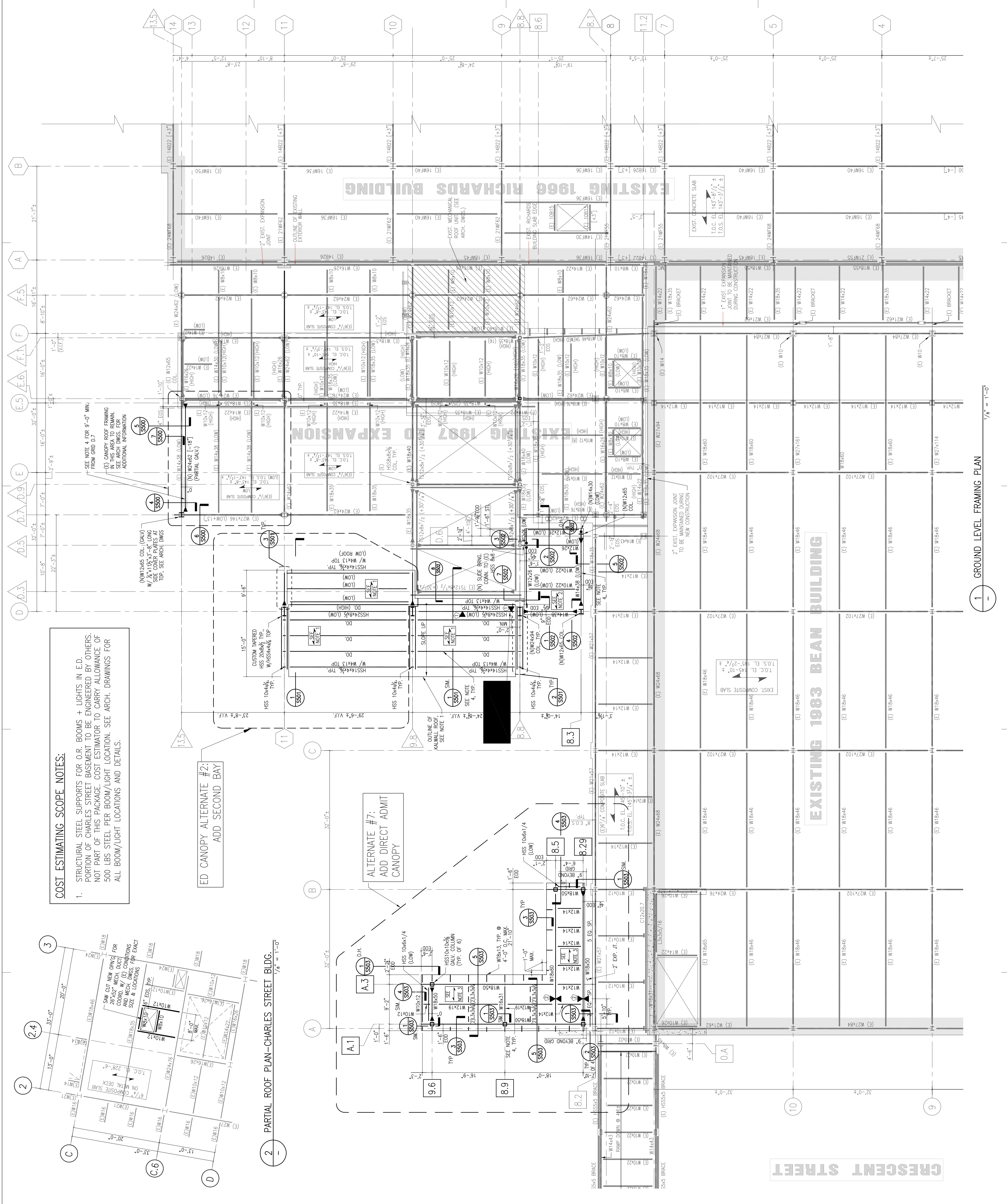
**TRO Jung | Brannen**  
 ARCHITECTURE INTERIOR DESIGN ENGINEERING MASTER PLANNING  
 22 Boston Wharf Road, Boston, Massachusetts 02210  
 Tel: 617.552.8000 Fax: 617.552.3400 www.trojungbrannen.com

**Maine Medical Center**  
 ED Expansion and Renovation  
 Portland, Maine MMC Project No. 21843

**EMERGENCY DEPARTMENT**  
**GROUND LEVEL**  
**FRAMING PLAN**

Drawn By:	MB	Commission No.:	4686
Approved By:	JHT	Date Issued:	12/14/07
Phase / Package Number:	Sheet Number		

**S201G**



**COST ESTIMATING SCOPE NOTES:**

- STRUCTURAL STEEL SUPPORTS FOR O.R. BOOMS + LIGHTS IN E.D. PORTION OF CHARLES STREET BASEMENT TO BE ENGINEERED BY OTHERS. NOT PART OF THIS PACKAGE. COST ESTIMATOR TO CARRY ALLOWANCE OF 500 LBS STEEL PER BOOM/LIGHT LOCATION. SEE ARCH. DRAWINGS FOR ALL BOOM/LIGHT LOCATIONS AND DETAILS.

**ED CANOPY ALTERNATE #2:**  
 ADD SECOND BAY

**ALTERNATE #7:**  
 ADD DIRECT ADMIT CANOPY

**2 PARTIAL ROOF PLAN-CHARLES STREET BLDG.**  
 1/8" = 1'-0"

**1 GROUND LEVEL FRAMING PLAN**  
 1/8" = 1'-0"