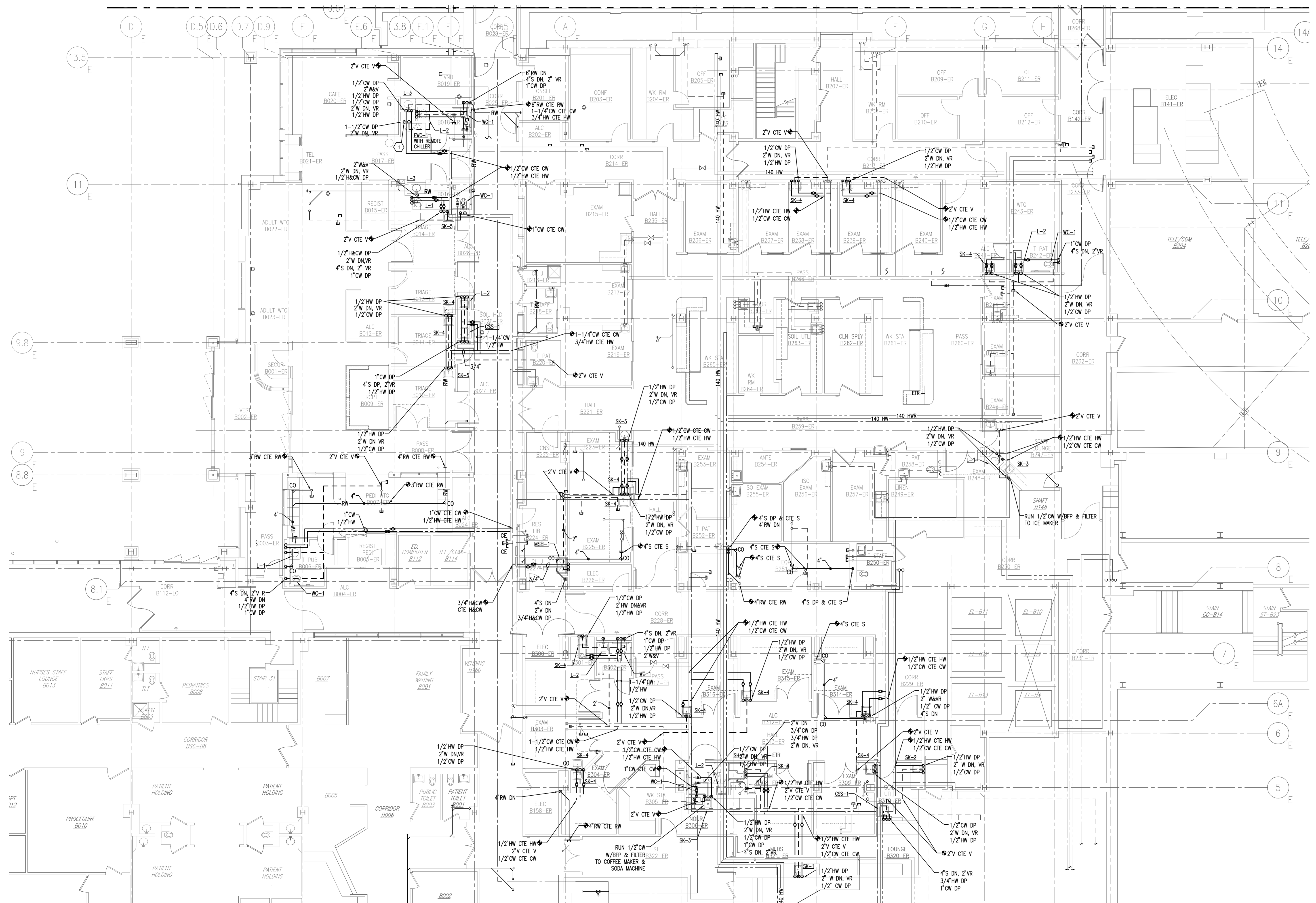


General Notes:

- COORDINATE WITH HVAC AND ELECTRICAL CONTRACTOR TO AVOID OBSTRUCTION WITH DUCTWORK, LIGHTING, AND PIPING ABOVE CEILING. CONTRACTOR RESPONSIBLE FOR OFFSETTING AND RELOCATING EXISTING MAINS AS REQUIRED TO AVOID THE AFOREMENTIONED.
- INSTALL WATER HAMMER ARRESTER AT ALL WATER CLOSET AND CLINIC SINK LOCATIONS.

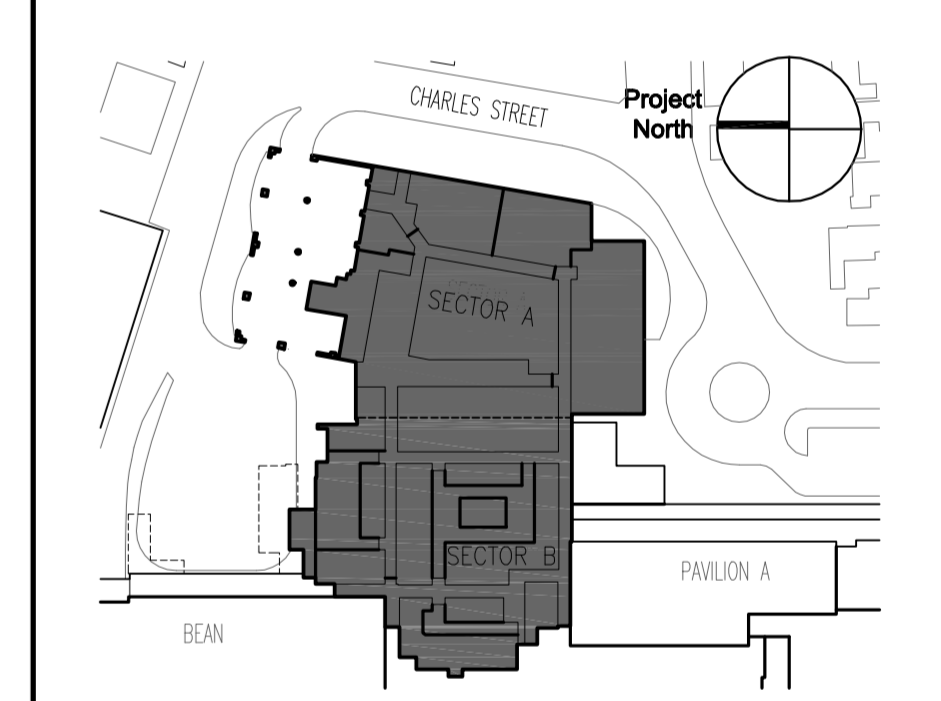
KEY NOTES:

- REMOTE CHILLER SHALL BE MOUNTED INSIDE WALL CAVITY BEHIND EWC-1. GENERAL CONTRACTOR SHALL PROVIDE WALL BRACKET SUPPORT. PLUMBING CONTRACTOR SHALL PROVIDE 3/8" TUBING FROM REMOTE CHILLER TO WATER COOLER, INCLUDING INSULATION. REFER TO ARCHITECTURAL DRAWING AND SPEC FOR LOCATION AND INSTALLATION OF SUPPORT.




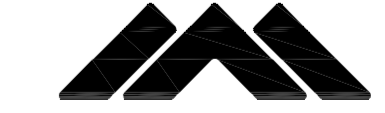
MARK	ISSUE DATE	DESCRIPTION
BID	12/14/07	BID SET

Issue Log



Key Plan


TRO Jung|Brannen
 ARCHITECTURE INTERIOR DESIGN ENGINEERING MASTER PLANNING
 22 Boston Wharf Road, Boston, Massachusetts 02210
 Tel 617.502.9400 Fax 617.502.3402 www.trojngbrannen.com


Maine Medical Center
 ED Expansion and Renovation
 Portland, Maine MMC Project No. 21843

Drawing Title
PLUMBING BASEMENT - RENOVATION SECTOR B

Drawn By	JAR	Commission No.	4696
Approved By	MLT	Date Issued	12/14/07

Phase / Package Number	Sheet Number
	P20B.B