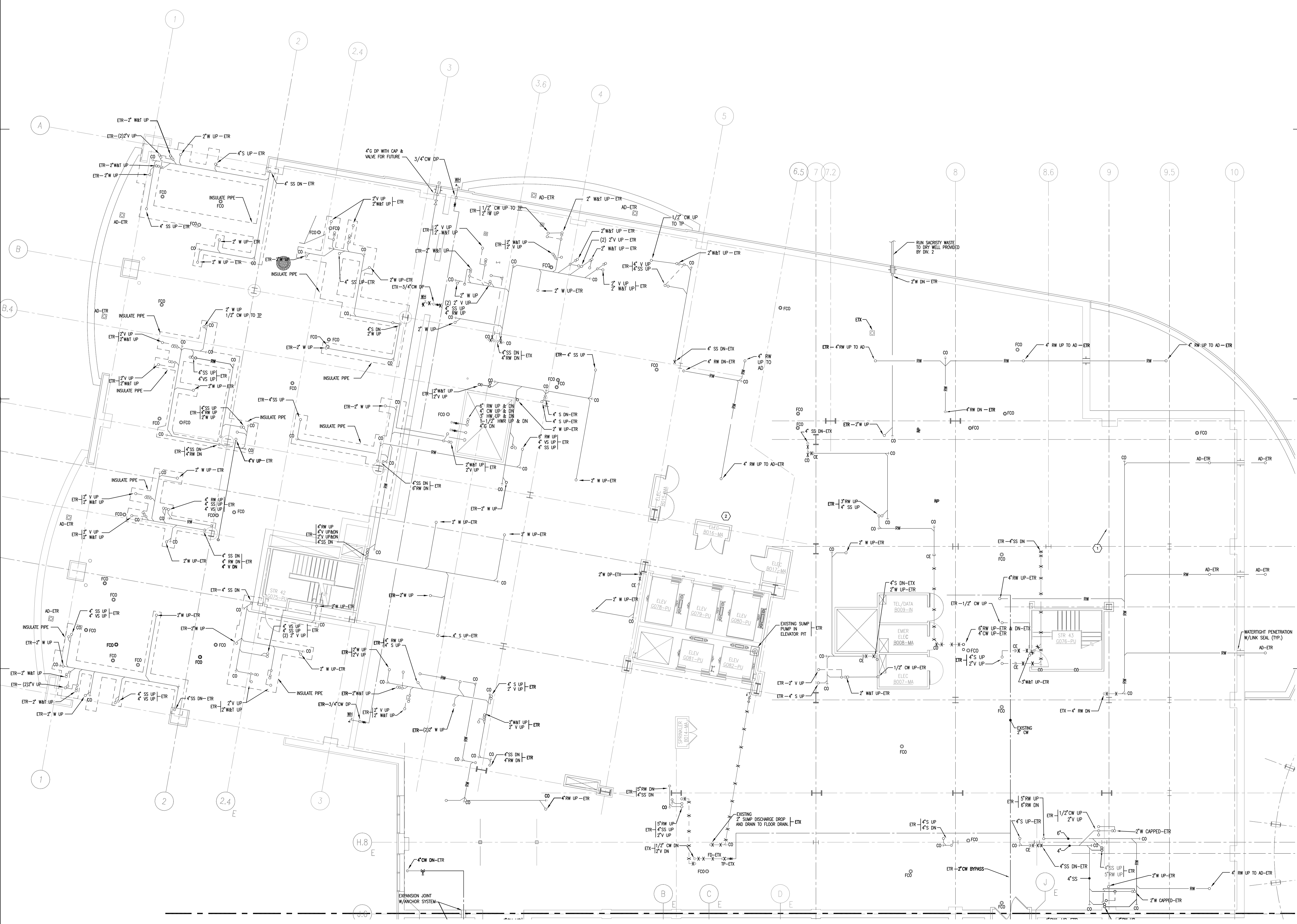
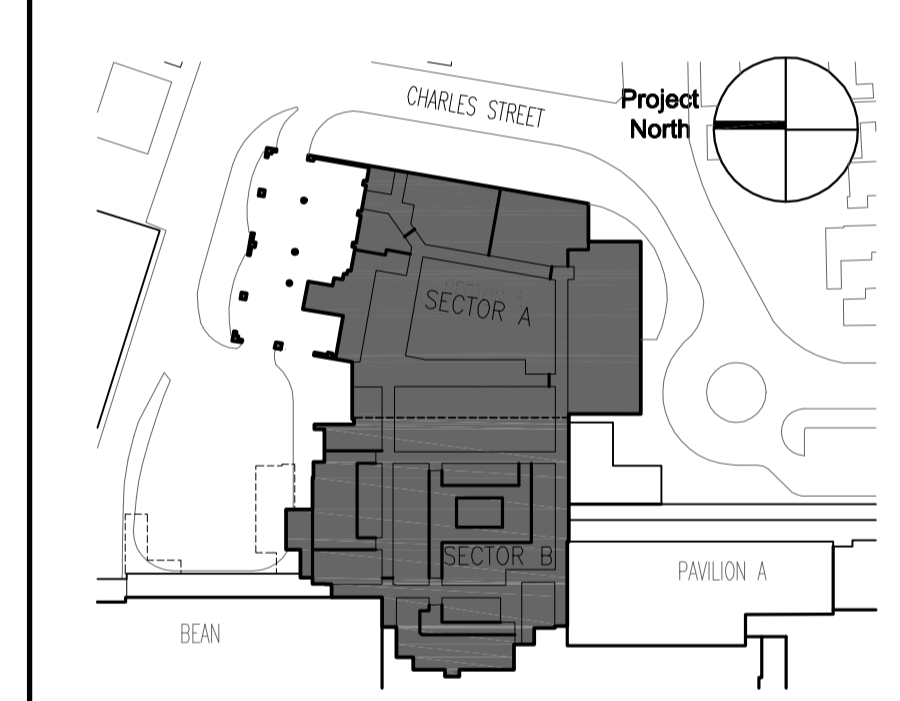


General Notes:
 1. COORDINATE WITH HVAC AND ELECTRICAL CONTRACTOR TO AVOID OBSTRUCTION WITH DUCTWORK, LIGHTING, AND PIPING ABOVE CEILING. CONTRACTOR RESPONSIBLE FOR OFFSETTING AND RELOCATING EXISTING MAINS AS REQUIRED TO AVOID THE AFOREMENTIONED.



MARK	ISSUE DATE	DESCRIPTION
BID	12/14/07	BID SET
Issue Log		



TRO Jung|Brannen
 ARCHITECTURE INTERIOR DESIGN ENGINEERING MASTER PLANNING
 22 Boston Wharf Road, Boston, Massachusetts 02210
 Tel 617.502.8400 Fax 617.502.3402 www.trojungbrannen.com

Maine Medical Center
 ED Expansion and Renovation
 Portland, Maine MMC Project No. 21843

Drawing Title		PLUMBING - DEMOLITION SECTOR A	
Drawn By	KC	Commission No.	4696
Approved By	MLT	Date Issued	12/14/07
Phase / Package Number	Sheet Number	P10B.A	