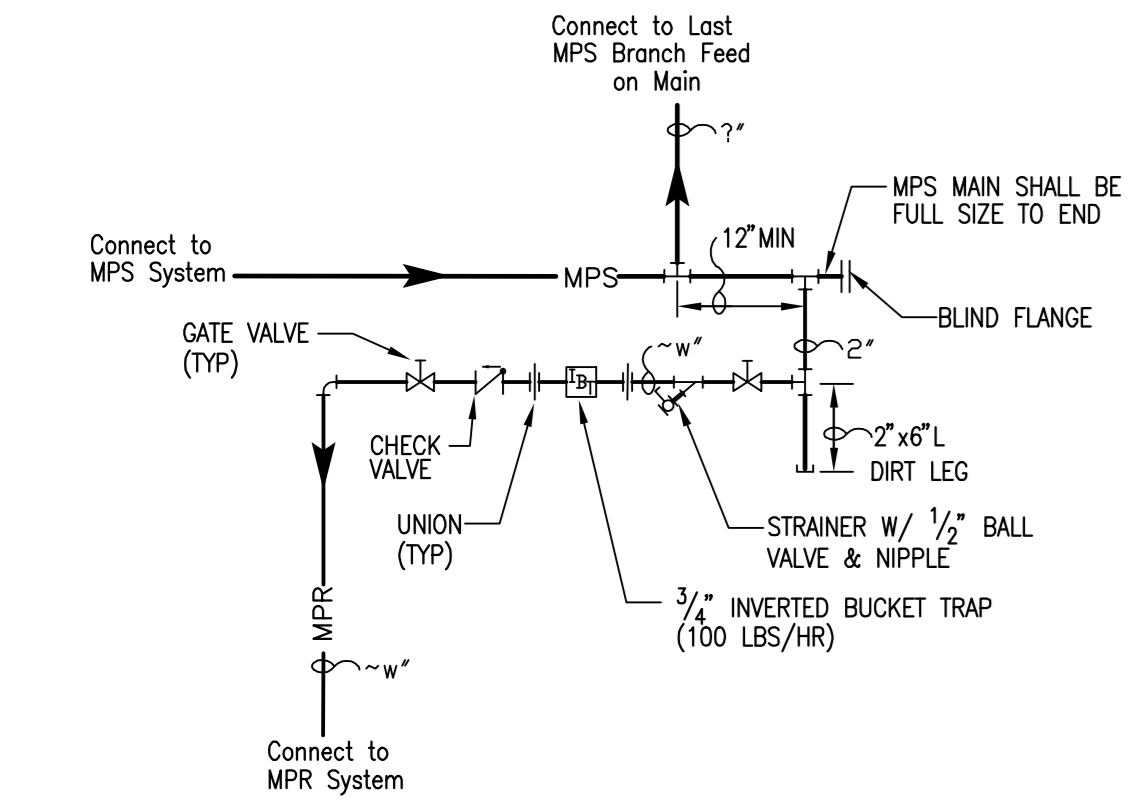
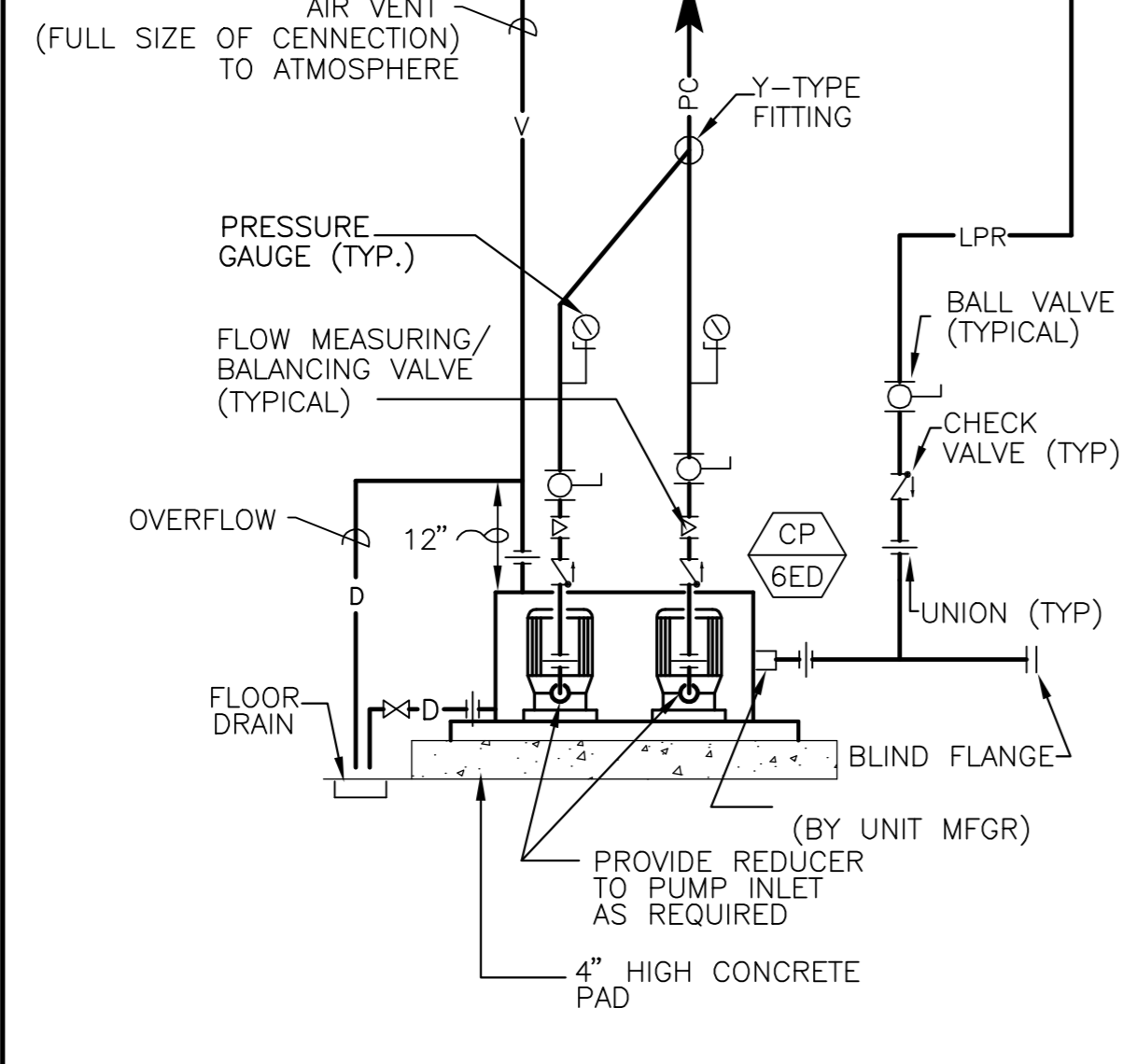


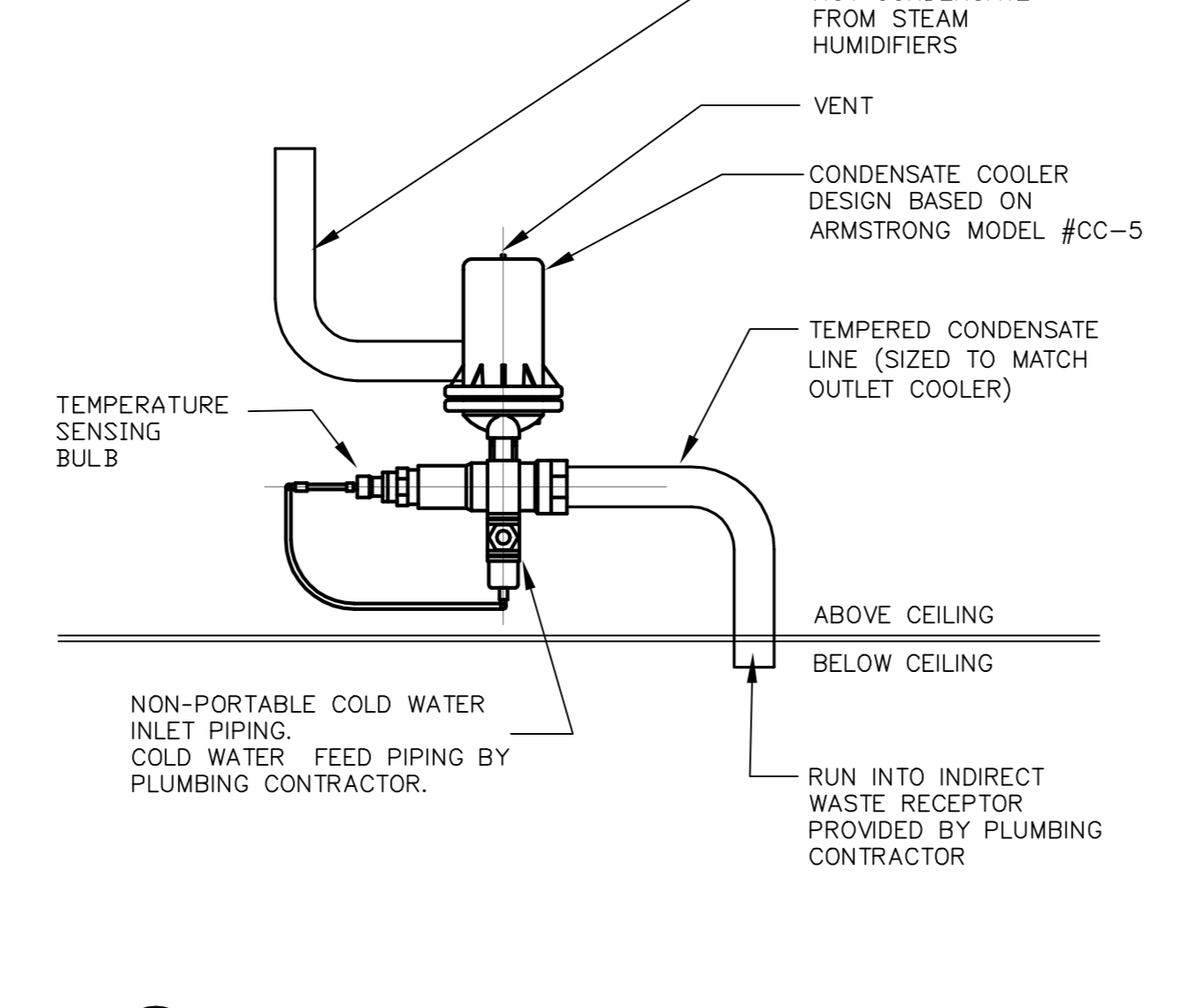
- Use this medium pressure steam trap assembly for the following:
1. Use for medium pressure steam systems only (16 PSI thru 60 PSI).
 2. Use only for atmospheric vented return systems with the possibility of backpressure within the medium pressure return system.
 3. This medium press trap does not have a test connection or a dirt leg with a blowdown connection. This trap is more difficult to maintain and test. Use only if budget restrictions require it's use on the project.
 4. Use thermodynamic trap as standard medium pressure end of main trap assembly. Use inverted bucket trap in lieu of thermodynamic trap only if it is the facility standard.



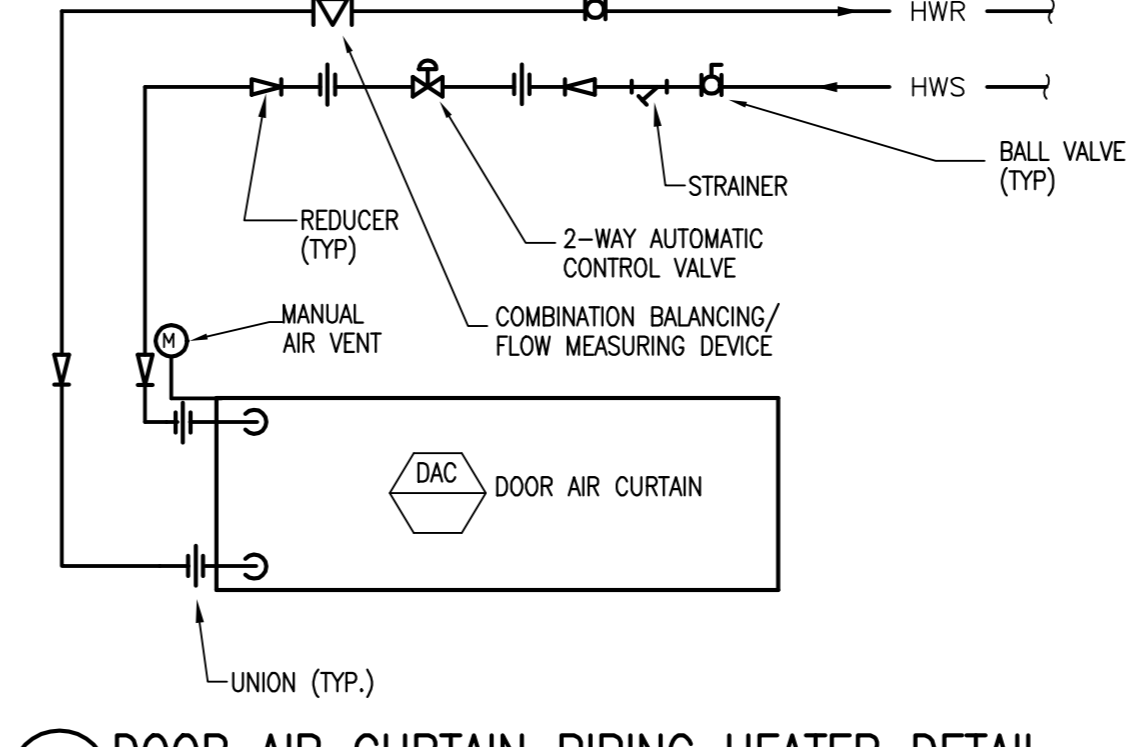
1 MEDIUM PRESSURE STEAM TRAP ASSEMBLY DETAIL
SCALE: NTS



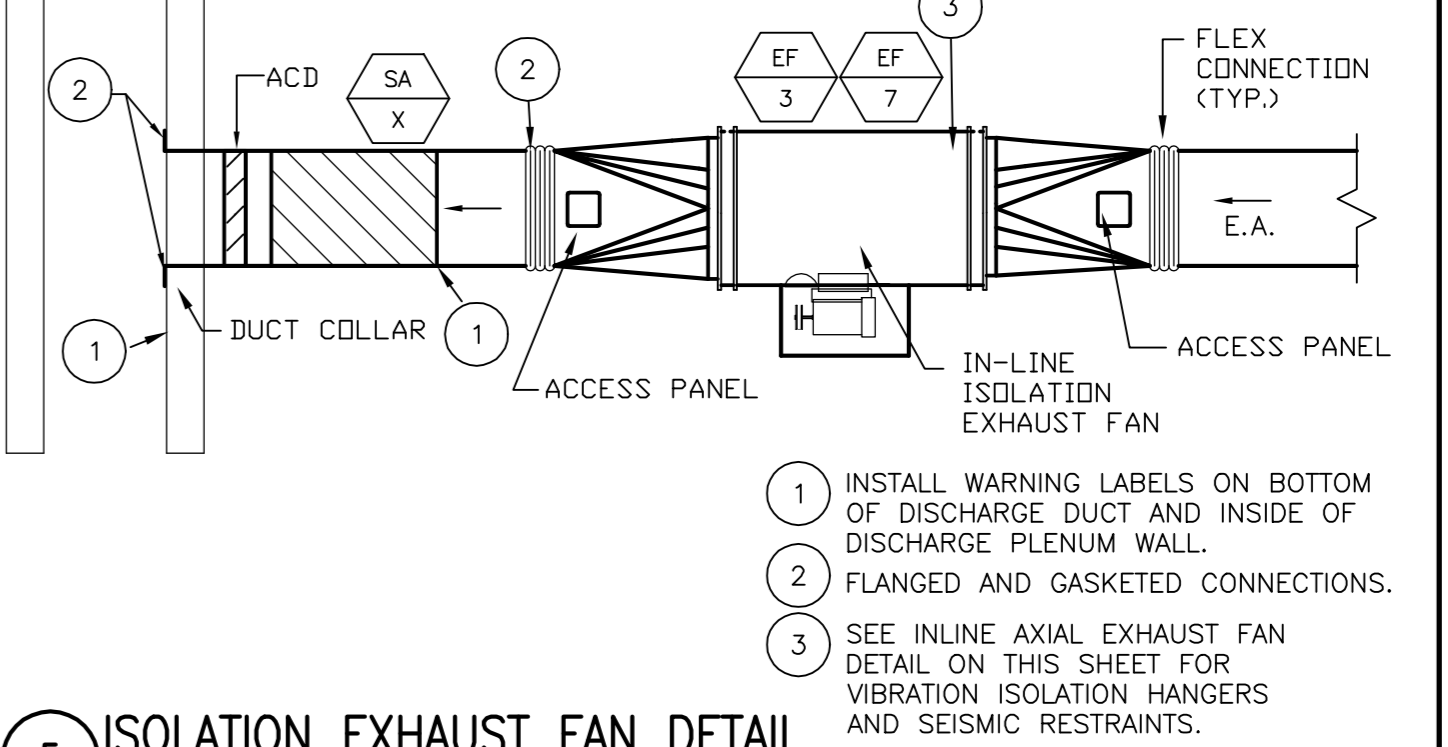
2 CONDENSATE PUMP DETAIL
SCALE: NTS



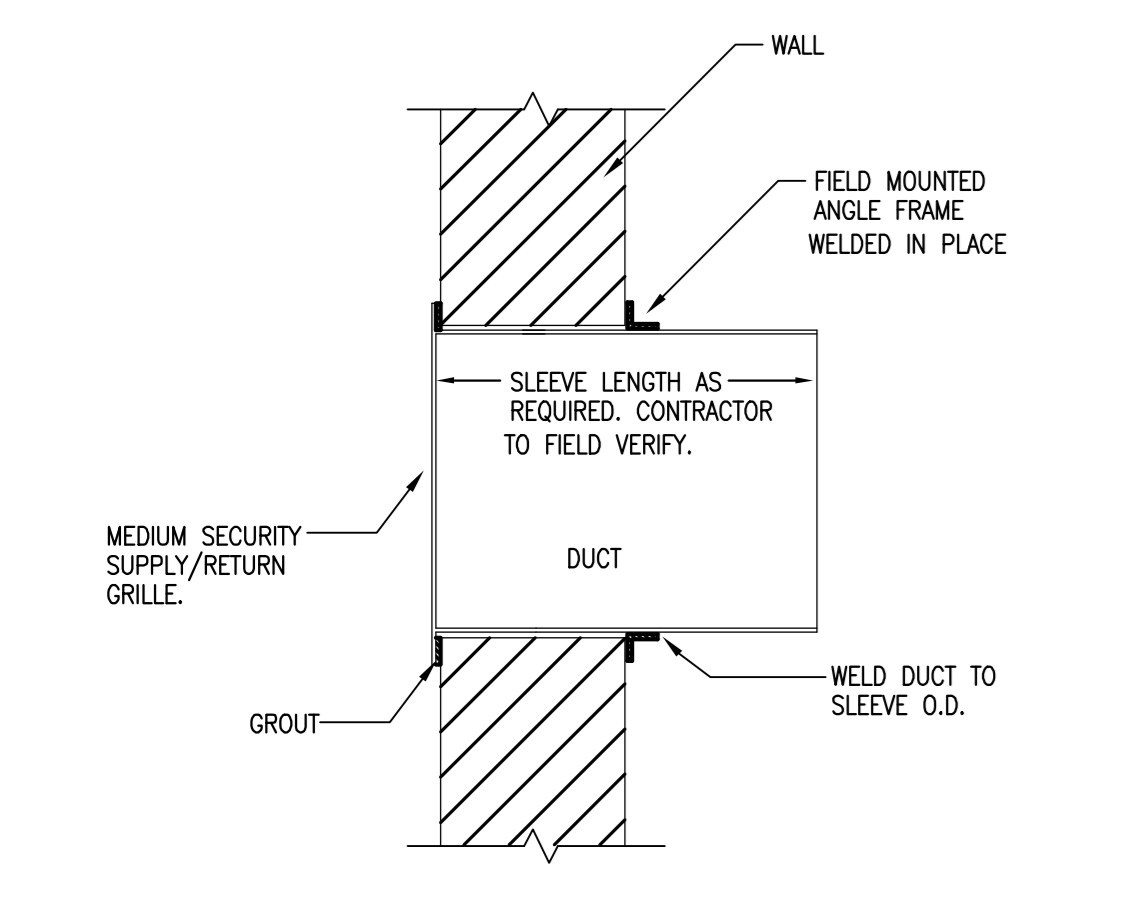
3 CONDENSATE COOLER DETAIL
SCALE: NTS



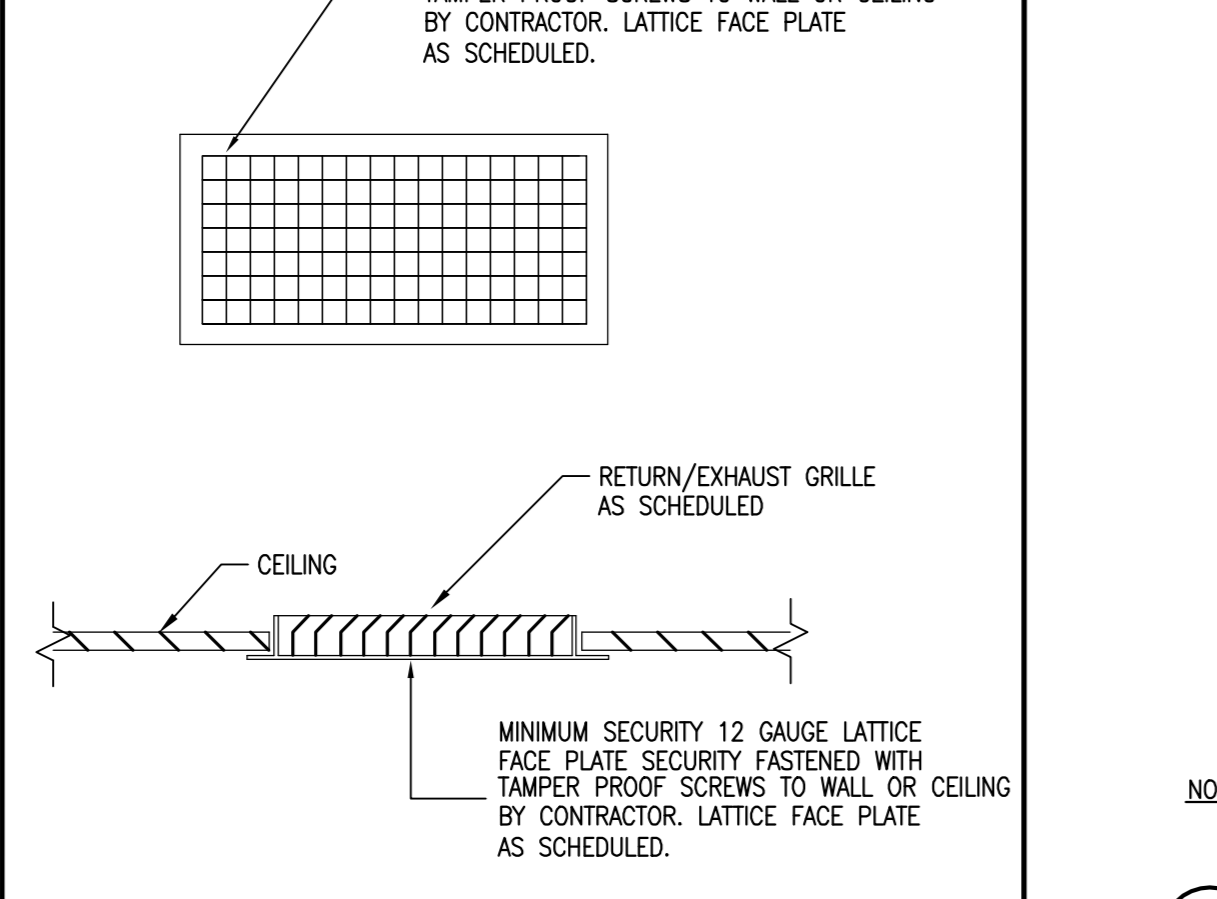
4 DOOR AIR CURTAIN PIPING HEATER DETAIL
SCALE: NTS



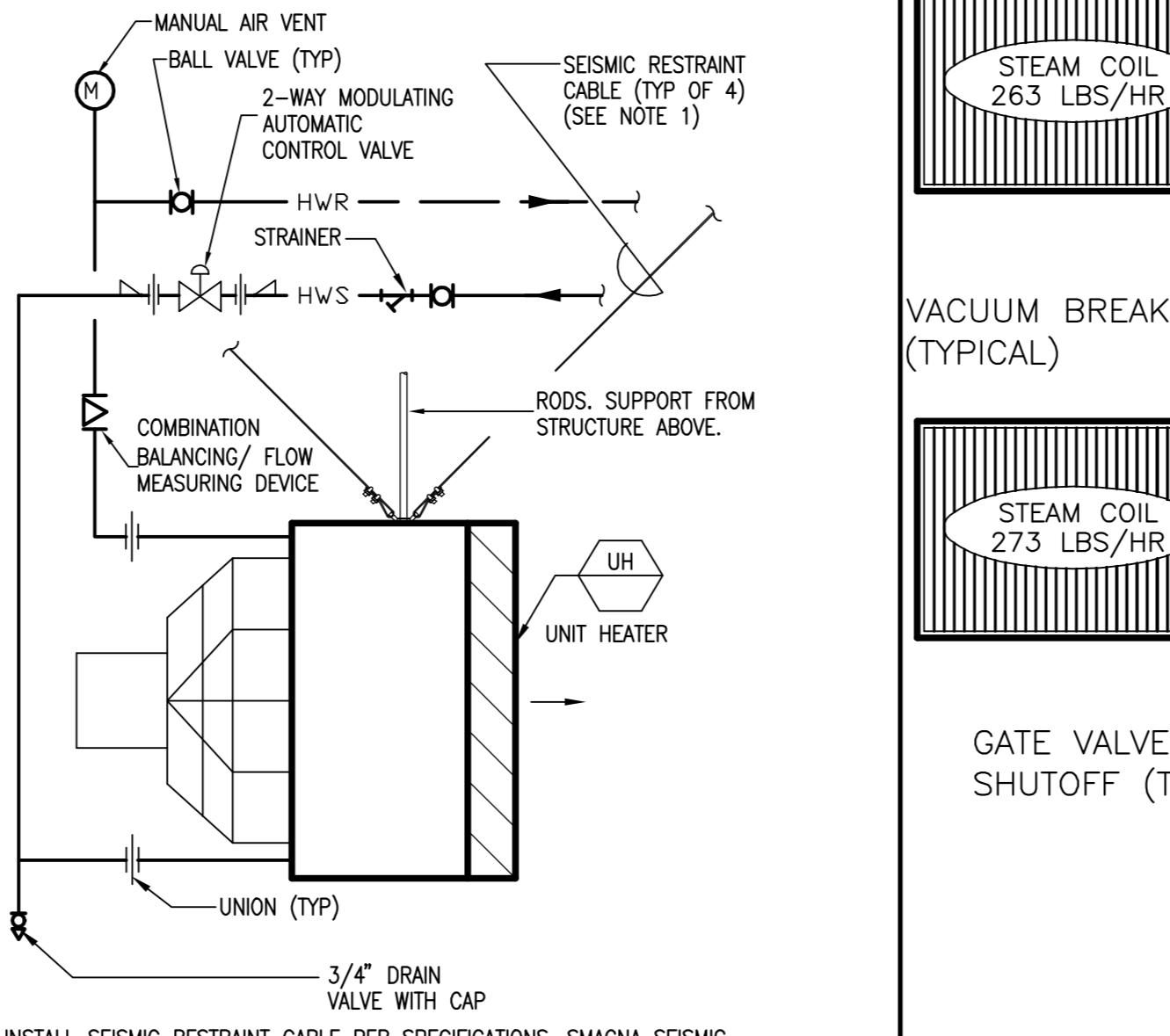
5 ISOLATION EXHAUST FAN DETAIL
SCALE: NTS



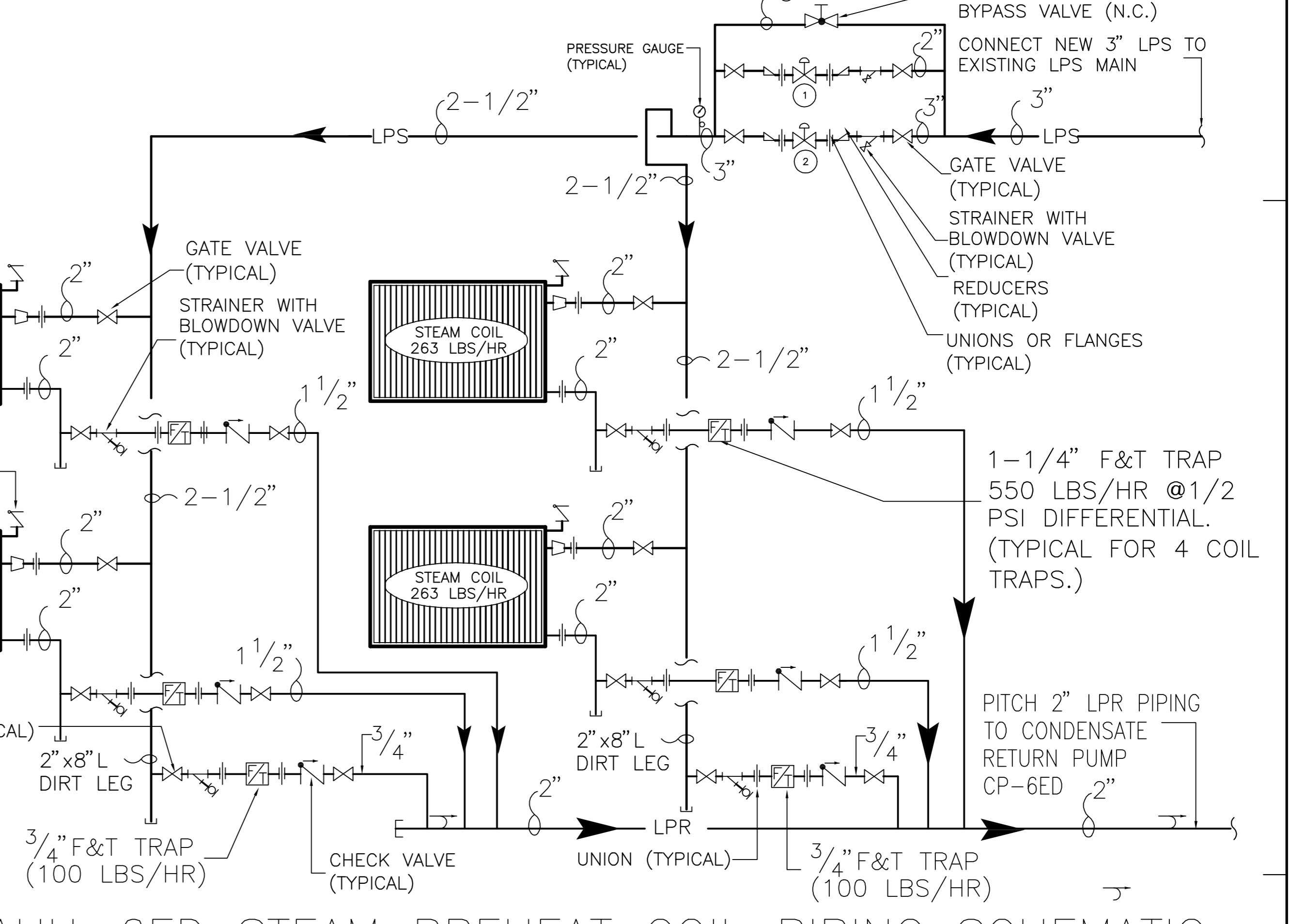
6 PSYCH EXAM ROOMS AND SECLUSION ROOM SUPPLY AND RETURN SECURITY GRILLE INSTALLATION DETAIL
SCALE: NTS



7 PSYCH AREA MINIMUM SECURITY RETURN/EXHAUST GRILLES
SCALE: NTS

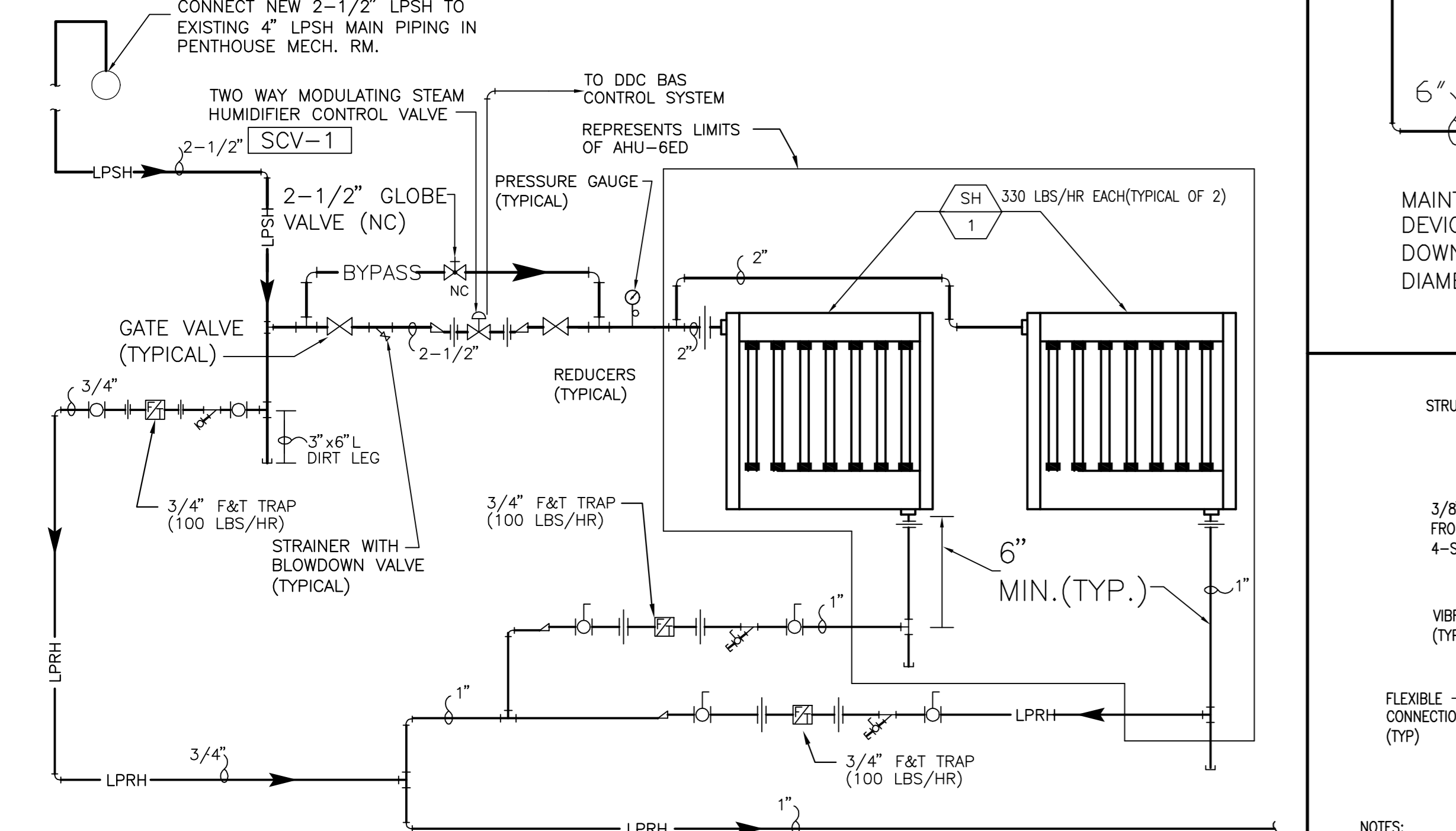


8 HOT WATER UNIT HEATER INSTALLATION DETAIL
SCALE: NTS



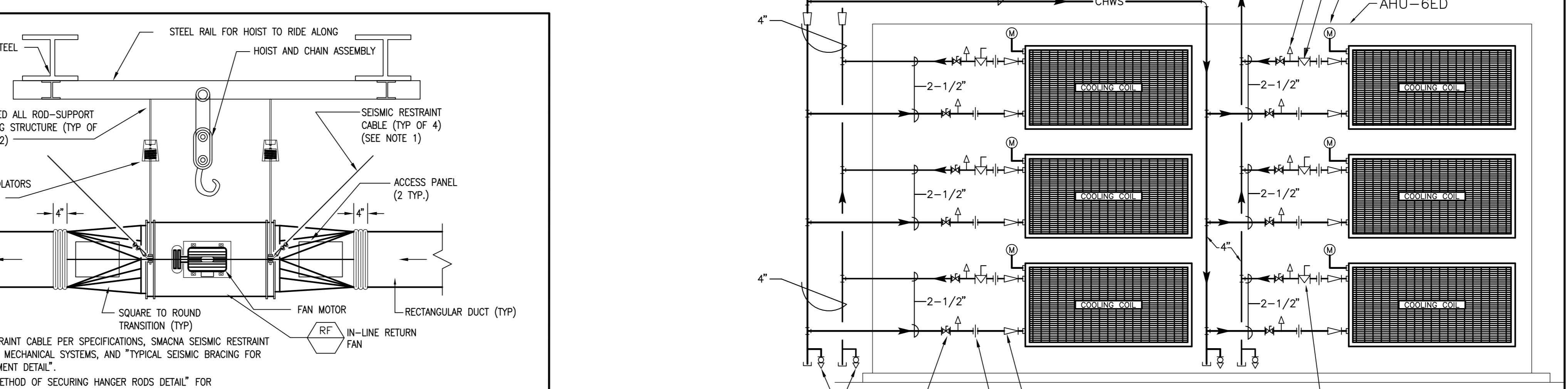
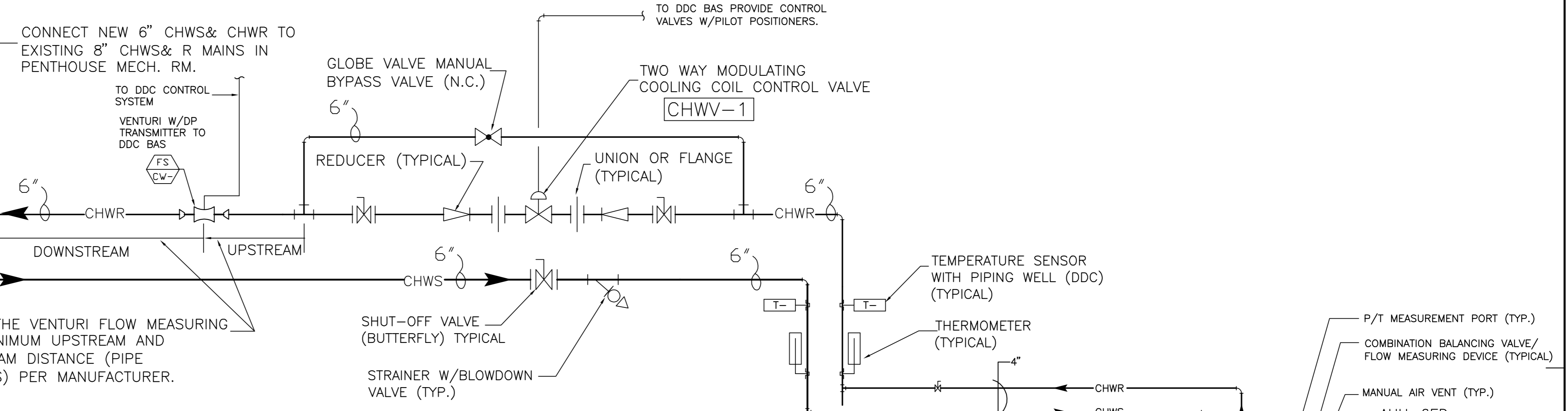
AHU-6ED STEAM PREHEAT COIL PIPING SCHEMATIC

- NOTES:
1. STEAM PRE-HEAT TWO WAY MODULATING CONTROL VALVE (1/3 CAPACITY 347 LBS./HR.)
 2. STEAM PRE-HEAT TWO WAY MODULATING CONTROL VALVE (2/3 CAPACITY 705 LBS./HR.)



AHU-6ED HUMIDIFIER PIPING SCHEMATIC

- NOTES:
1. ALL CONDENSATE RETURN PIPING SHALL BE SCHEDULE 80 WELDED STAINLESS STEEL.
 2. TO CONDENSATE COOLER THEN DRAIN.



AHU-6ED COIL PIPING SCHEMATIC

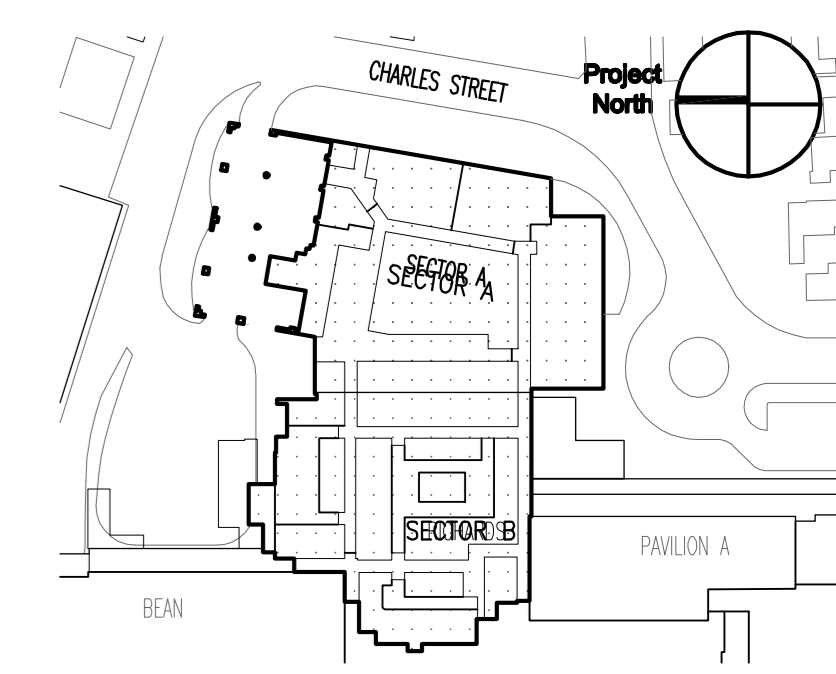
8 INLINE CENTRIFUGAL RETURN FAN INSTALLATION DETAIL
SCALE: NTS

General Notes:

1. INSTALL WARNING LABELS ON BOTTOM OF DISCHARGE DUCT AND INSIDE OF DISCHARGE PLENUM WALL.
2. FLANGED AND GASKETED CONNECTIONS.
3. SEE IN-LINE AXIAL EXHAUST FAN DETAIL ON THIS SHEET FOR VIBRATION ISOLATION HANGERS AND SEISMIC RESTRAINTS.

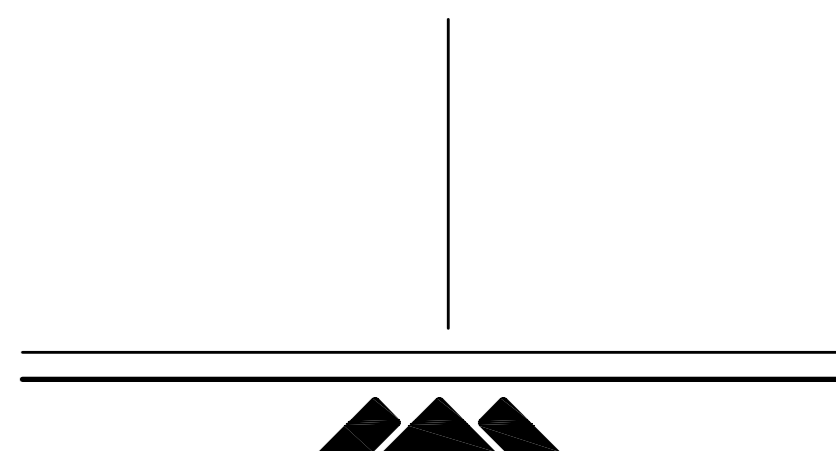
MARK	ISSUE DATE	DESCRIPTION
A1	01/10/08	ADDENDUM NO. 1
BID	12/14/07	BID SET

Issue Log



Key Plan

TRO Jung|Brannen
ARCHITECTURE INTERIOR DESIGN ENGINEERING MASTER PLANNING
22 Boston Wharf Road, Boston, Massachusetts 02210
Tel 617.502.8400 Fax 617.502.3402 www.trojungbrannen.com



Maine Medical Center
ED Expansion and Renovation
Portland, Maine MMC Project No. 21843

Drawing Title
HVAC TYPICAL DETAILS SHEET NO. 3

Drawn By	MJC	Commission No.	4696
Approved By	MJC	Date Issued	12/14/07

Phase / Package Number	Sheet Number
------------------------	--------------

H603