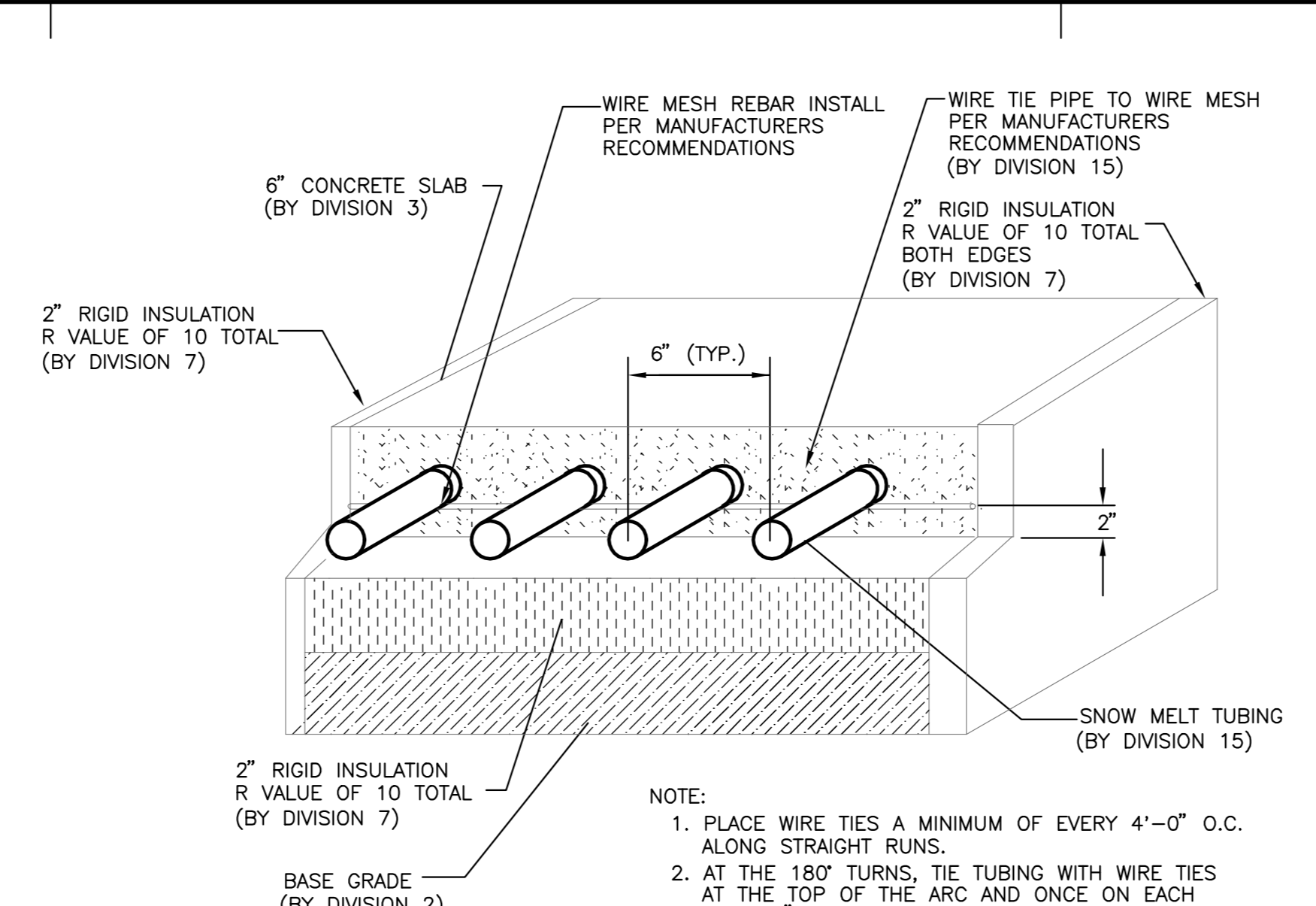
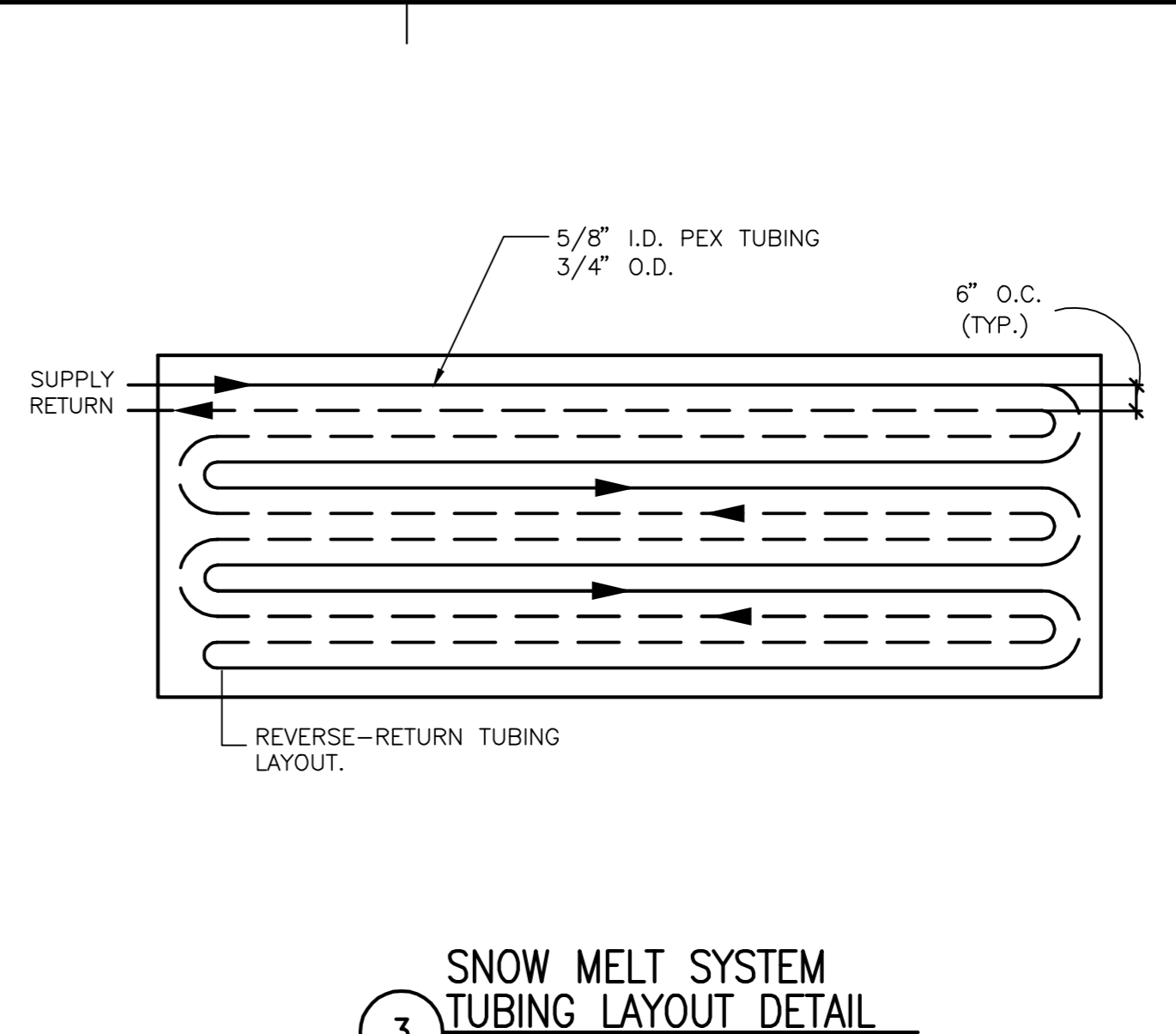


1 SNOW MELT SYSTEM MANIFOLDS DETAIL
SCALE: NTS



2 SNOW MELT DETAIL
SCALE: NTS

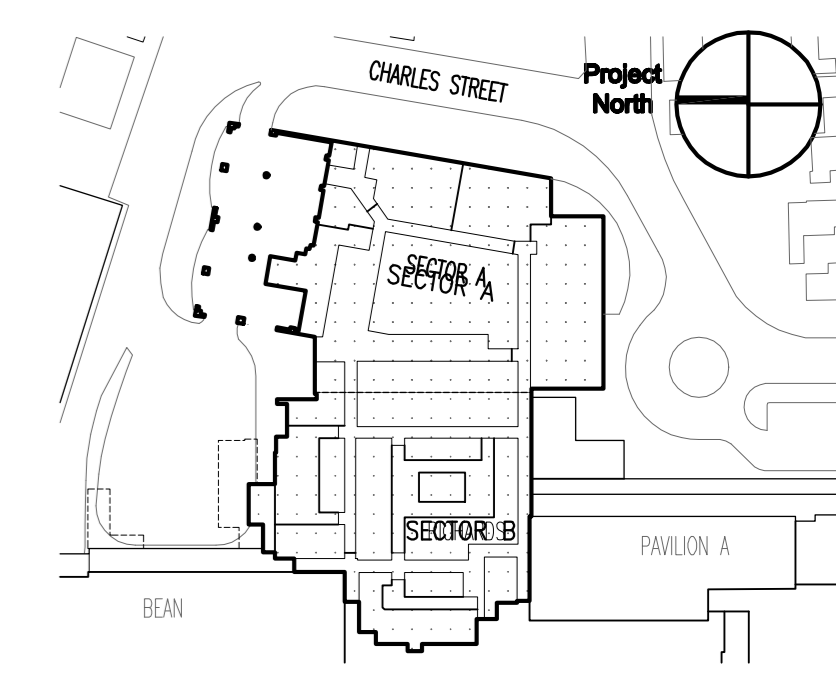


3 SNOW MELT SYSTEM TUBING LAYOUT DETAIL
SCALE: NTS

General Notes:
1. ALL WORK FOR THIS NEW SNOW MELT SYSTEM SHALL BE BID UNDER ADD ALTERNATE NO. 10.

MARK	ISSUE DATE	DESCRIPTION
A1	01/10/08	ADDENDUM NO. 1

Issue Log



Key Plan

TRO Jung|Brannen
ARCHITECTURE INTERIOR DESIGN ENGINEERING MASTER PLANNING
22 Boston Wharf Road, Boston, Massachusetts 02210
Tel 617.502.8400 Fax 617.502.3402 www.trojungbrannen.com

Maine Medical Center
ED Expansion and Renovation
Portland, Maine MMC Project No. 21843

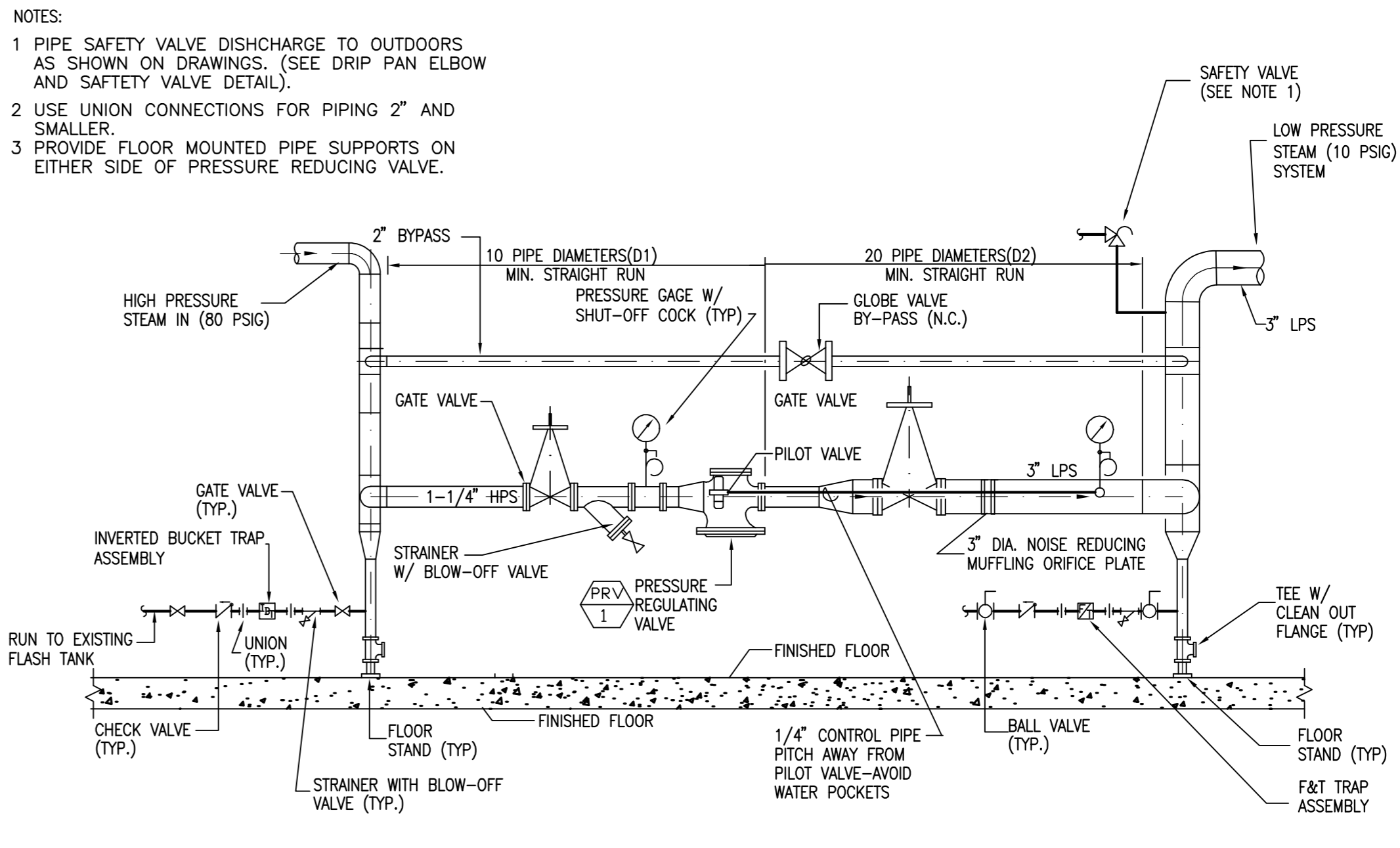
HVAC SNOW MELT SYSTEM DETAILS AND SCHEDULES

Drawn By: M.J.C. Commission No. 4696
Approved By: J.N. Date Issued: 12/14/07

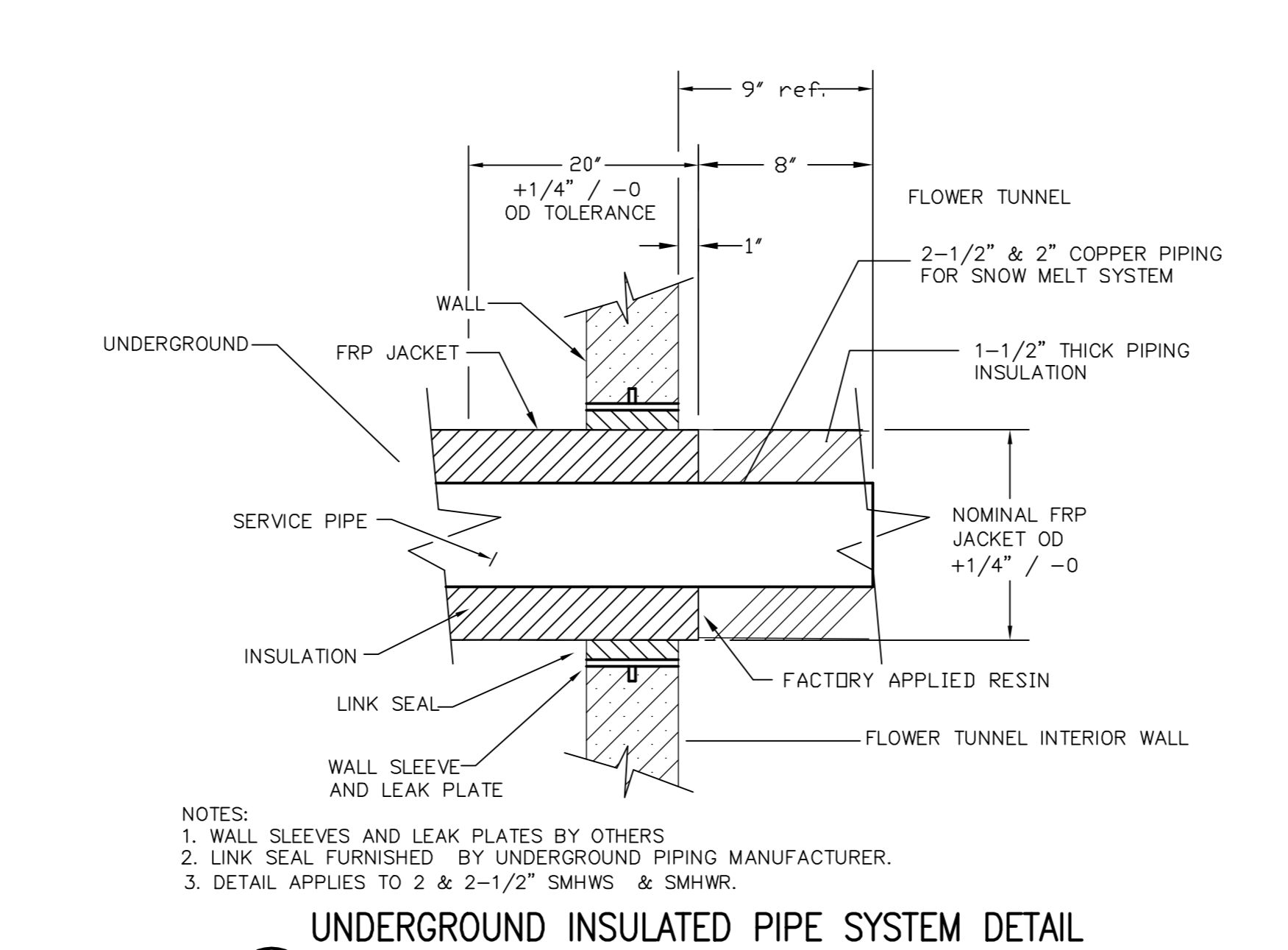
Phase / Package Number: Sheet Number

H503

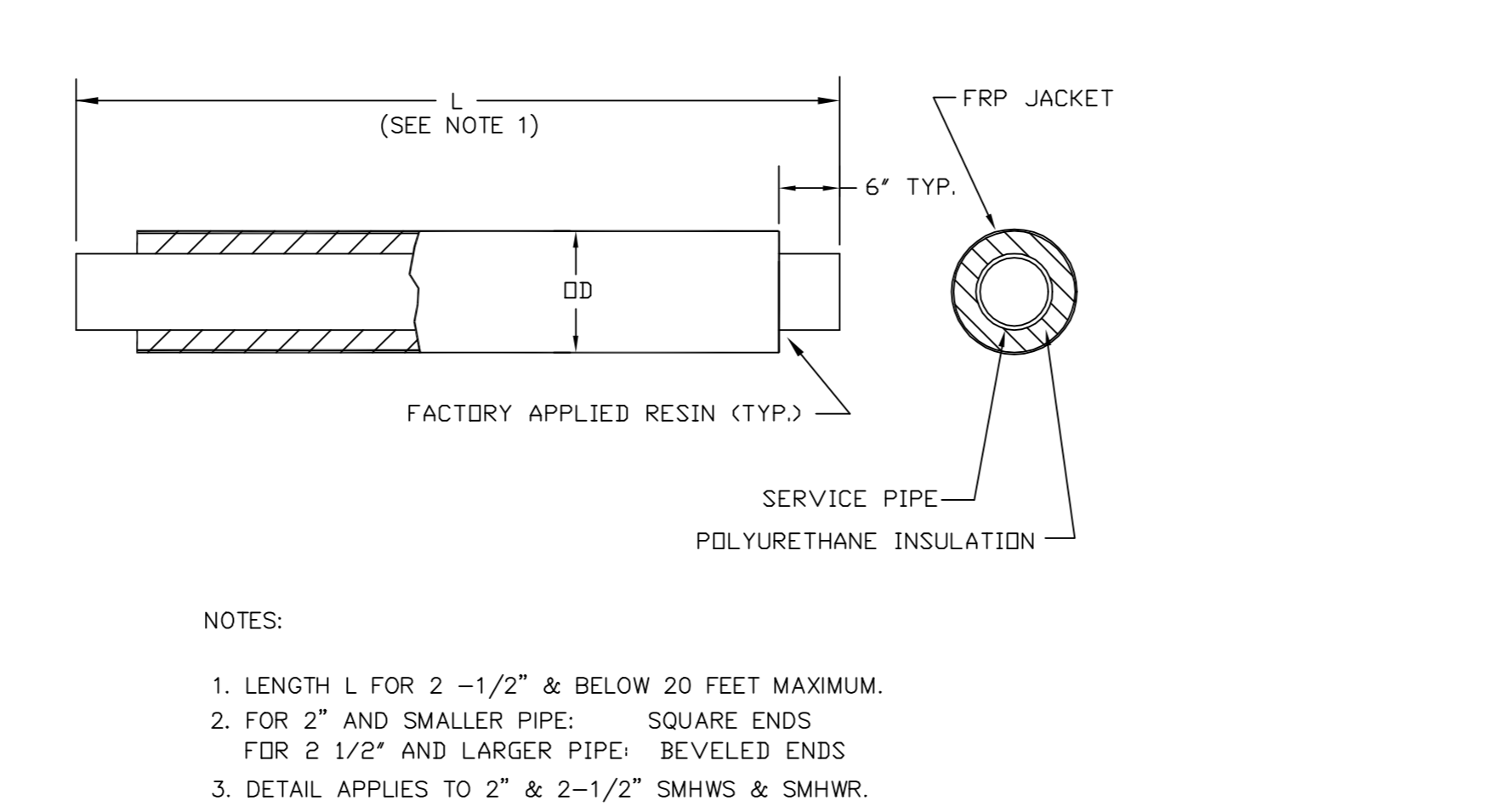
SCALE: NOT TO SCALE



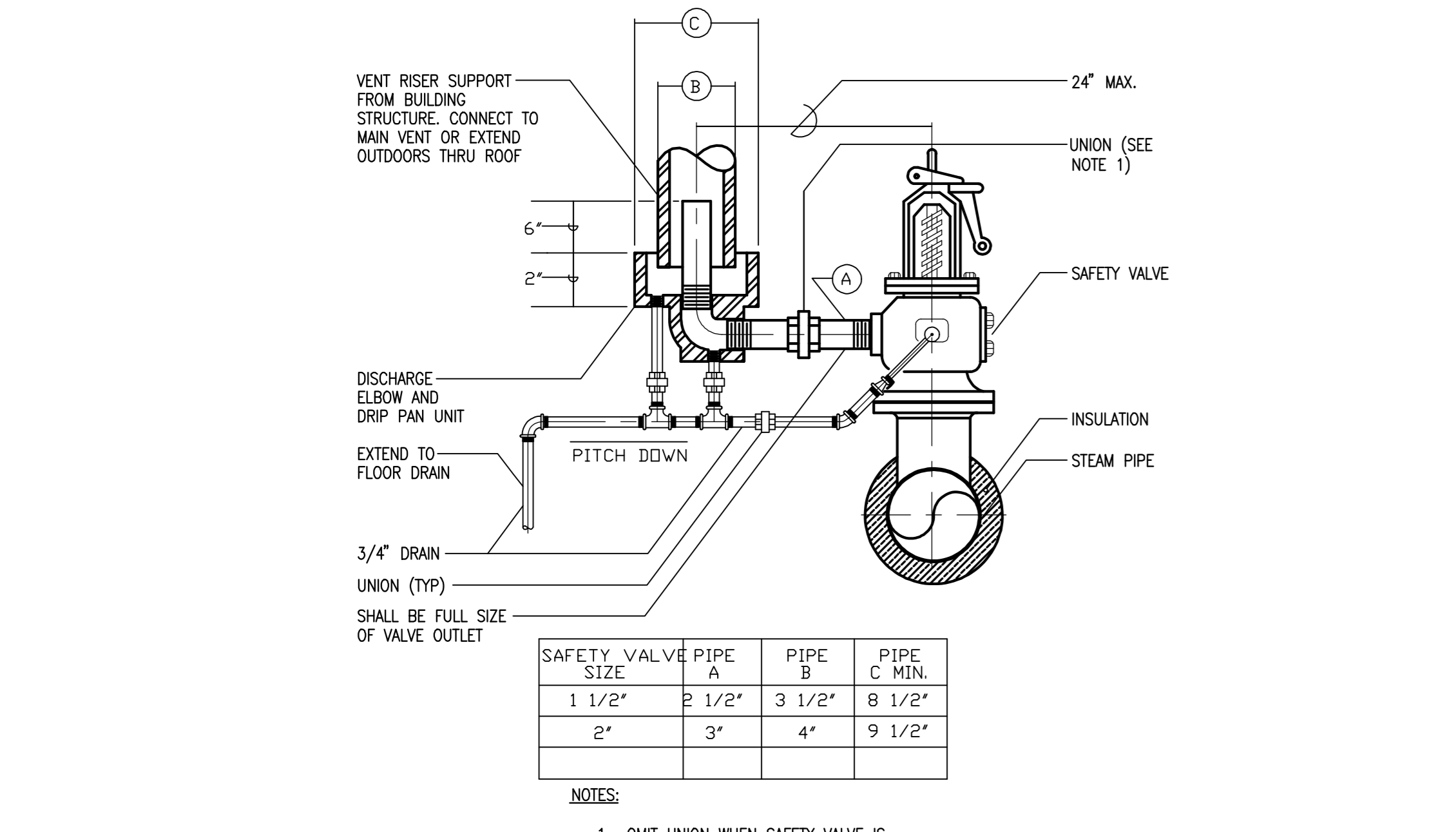
6 SINGLE STAGE - STEAM PRESSURE REDUCING STATION DETAIL
SCALE: NTS



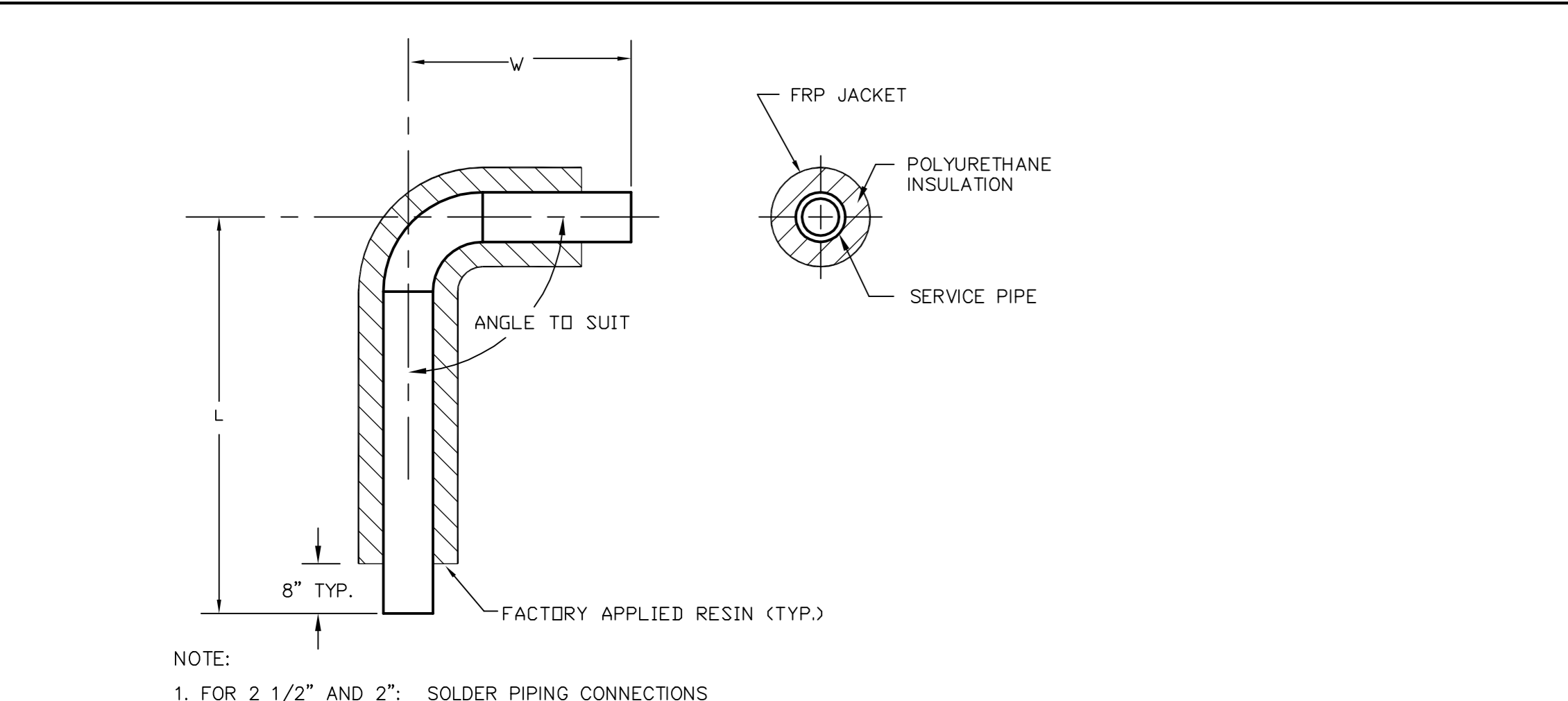
5 UNDERGROUND INSULATED PIPE SYSTEM DETAIL RESIN END SEAL
SCALE: NTS



8 UNDERGROUND INSULATED PIPE SYSTEM DETAIL COPPER PIPE STRAIGHT LENGTH
SCALE: NTS



4 SAFETY VALVE AND DRIP PAN ELBOW DETAIL
SCALE: NTS



7 UNDERGROUND INSULATED PIPE SYSTEM DETAIL ELBOW ASSEMBLY
SCALE: NTS

ITEM	MANUFACTURER	MODEL	DIAMETER	PASSES	LENGTH	CAPACITY				CIRCULATING FLUID		TUBE VELOCITY		STEAM PSIG		CONTROL VALVE		HEATING SURFACE	
						MBH	GPM	EWI	LWT	MAX. PD.FT.	FT./SEC.	ENT. CONTROL VALVE	ENT. HX	LB/HR	SQ. FT.				
HX-1	BELL & GOSSETT	SU 6-4-2	6"	2	53'	800.00	SEE NOTE #1	57	110	140	1.2	4.2	5	2	828	17.2	SQ. FT.		

NOTE: 1. SNOW MELT SYSTEM FLUID SHALL BE 45% PERCENT PROPYLENE GLYCOL BY VOLUME TO WATER SOLUTION.

ITEM	MANUFACTURER	MODEL	LOCATION	SERVICE	TYPE	SAL. CAP.	INITIAL FILL PRESSURE	SIZE	REMARKS
ET-1	BELL & GOSSETT	D-80V	BEAN SUB. MECH	SNOW MELT SYSTEM	VERTICAL	44.4	12	56"	16.25"

MANIFOLD NO.	MANUFACTURER	MANIFOLD SIZE (IN.)	NO. OF LOOPS	LOOP		GPM PER LOOP		TOTAL		SURFACE		TOTAL SQ. FT.	REMARKS
				DIAMETER (IN.)	DIAMETER (IN.)	GPM	EWI	LWT	TEMP	HEAD (FT.)			
MF-1	UPONOR/WIRSBO	1-1/2	8	hePEX 5/8"	2.3	18.4	140	110	45	15	1,050	SNOW MELT-AREA 1 SUPPLY	
MF-2	UPONOR/WIRSBO	1-1/2	8	hePEX 5/8"	2.35	18.8	140	110	45	15	1,070	SNOW MELT-AREA 2 SUPPLY	
MF-3	UPONOR/WIRSBO	1-1/4	5	hePEX 5/8"	2.2	11	140	110	45	15	625	SNOW MELT-AREA 3 SUPPLY	

NOTES:
1. PROVIDE MATCHING 1-1/2" SNOW MELT RETURN MANIFOLDS FOR AREA NO.1 AND AREA NO. 2.
2. PROVIDE MATCHING 1-1/4" SNOW MELT RETURN MANIFOLDS FOR AREA NO.3.

ITEM	MANUFACTURER	MODEL	SIZE	TYPE	GPM	HEAD	HP	V	PH	RPM	REMARKS
P-1	BELL & GOSSETT	SERIES 80	1-1/2X1-1/2X8-1/2	IN-LINE	57	70	5	480	3	1750	
P-2	BELL & GOSSETT	SERIES 80	1-1/2X1-1/2X8-1/2	IN-LINE	57	70	5	480	3	1750	

ITEM	MANUFACTURER	MODEL	GPM	LENGTH	DIAMETER	CV	REMARKS
AS-1	BELL & GOSSETT	RL-2-1/2	57	17-3/8"	8-3/8"	80	

ITEM	MANUFACTURER	MODEL	STEAM PRESSURE		CAPACITY	BYPASS VALVE	PIPE SIZES		CV	REMARKS	
			INLET	OUTLET			DI	D2			
PRV-1	SPENCE	TYPE ED	1-1/4"	80	10	850	2"	1-1/2"	3"	7	

NOTES: 1. PROVIDE PRV-1 VALVE AS E 50% F WITH REDUCED TRIM (PARABOLIC), FURNISH WITH REMOVABLE INSULATED JACKET, AND MUFFLING ORIFICE PLATE.

ITEM	MANUFACTURER	MODEL	CAPACITY	VALVE SIZE	ORIFICE	LOCATION	SET PRESSURE	SERVES
SRV-1	SPENCE	FIG. 41	900	1-1/2" X 2"	0.8479	BEAN SUBSMT MECH	15	PRV-1