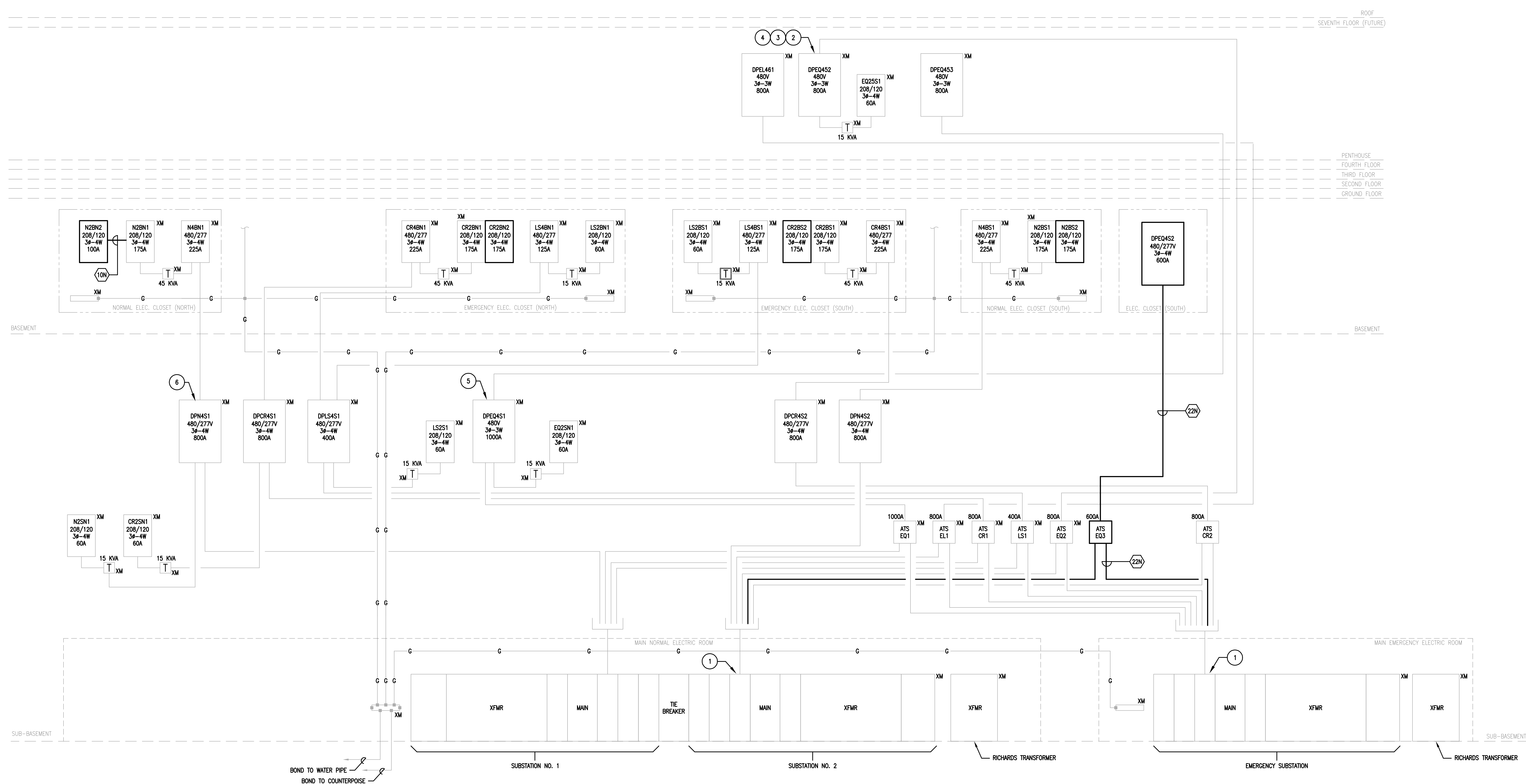


G1. UNLESS OTHERWISE STATED, FEEDERS TO MOTORS, ATS'S, PANELBOARDS, TRANSFORMERS, ETC. SHALL BE SIZED IN ACCORDANCE WITH THE HP/CURRENT/KVA RATINGS OF THE EQUIPMENT IN CONJUNCTION WITH THE MOTOR DATA SCHEDULE, 3-PHASE FEEDER LEGEND, AND 3-PHASE DRY-TYPE TRANSFORMER SCHEDULE.

DRAWING NOTES:

- 1 PROVIDE NEW 600A/3P CIRCUIT BREAKER TO MATCH EXISTING IN EXISTING SPACE.
- 2 PROVIDE NEW 400A/3P CIRCUIT BREAKER TO MATCH EXISTING IN EXISTING PANEL "DPEQ452". REMOVE EXISTING TO PROVIDE NEW AS REQUIRED.
- 3 PROVIDE NEW 175A/3P CIRCUIT BREAKER TO MATCH EXISTING IN EXISTING PANEL "DPEQ452". REMOVE EXISTING TO PROVIDE NEW IF REQUIRED.
- 4 PROVIDE ONE (1) 30A/3P AND ONE (1) 70A-3P NEW CIRCUIT BREAKERS TO MATCH EXISTING IN EXISTING SPACE IN PANEL "DPEQ452".
- 5 PROVIDE NEW 15A/3P CIRCUIT BREAKER TO MATCH EXISTING IN EXISTING PANEL "DPEQ451".
- 6 PROVIDE NEW 90A/3P CIRCUIT BREAKER TO MATCH EXISTING IN EXISTING PANEL "DPN451".

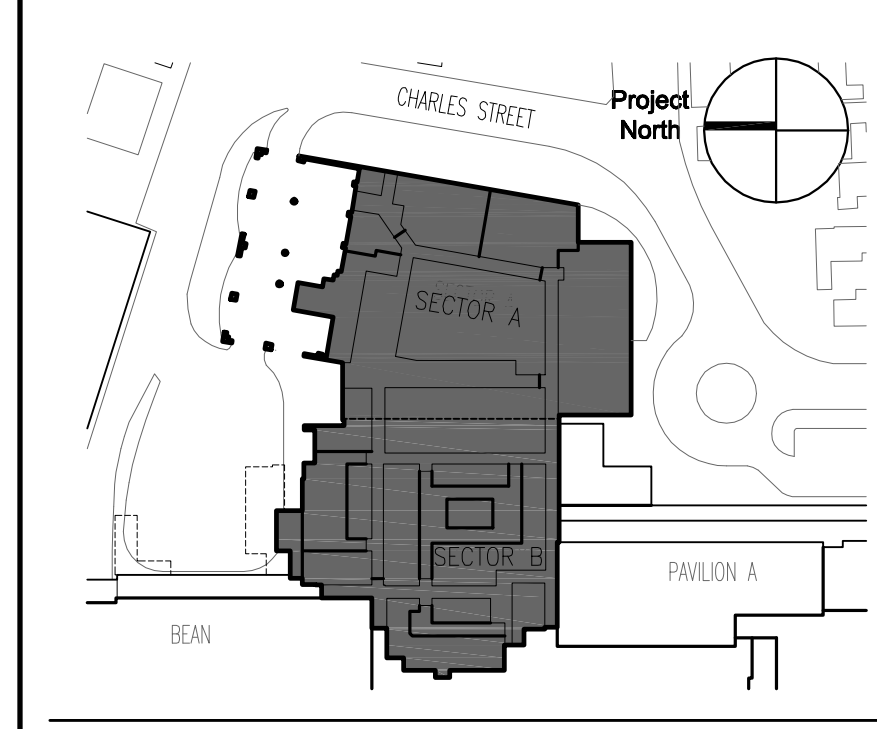


1 PARTIAL POWER RISER DIAGRAM
NONE

POWER RISER NOTES:
P1. ALL EQUIPMENT SHOWN LIGHT IS EXISTING TO REMAIN, UNLESS NOTED OTHERWISE.

MARK	ISSUE DATE	DESCRIPTION
BID	12/14/07	BID SET

Issue Log



Key Plan

TRO Jung Brannen
ARCHITECTURE INTERIOR DESIGN ENGINEERING MASTER PLANNING
22 Boston Wharf Road, Boston, Massachusetts 02210
Tel 617.502.9400 Fax 617.502.3402 www.trojungbrannen.com

THREE PHASE FEEDER LEGEND FOR COPPER CONDUCTORS

No.	AMP RATING	THREE WIRE WITH GROUND		FOUR WIRE WITH GROUND	
		CONDUCTORS	CONDUIT	CONDUCTORS	CONDUIT
1	15	3 #12 & 1 #12 G	3/4"	4 #12 & 1 #12 G	3/4"
2	20	3 #12 & 1 #12 G	3/4"	4 #12 & 1 #12 G	3/4"
3	30	3 #10 & 1 #10 G	3/4"	4 #10 & 1 #10 G	3/4"
4	40	3 #8 & 1 #10 G	3/4"	4 #8 & 1 #10 G	3/4"
5	50	3 #6 & 1 #10 G	1"	4 #6 & 1 #10 G	1-1/2"
6	60	3 #4 & 1 #10 G	1-1/2"	4 #4 & 1 #10 G	1-1/2"
7	70	3 #4 & 1 #8 G	1-1/2"	4 #4 & 1 #8 G	1-1/2"
8	80	3 #2 & 1 #8 G	1-1/2"	4 #2 & 1 #8 G	1-1/2"
9	90	3 #2 & 1 #8 G	1-1/2"	4 #2 & 1 #8 G	1-1/2"
10	100	3 #1 & 1 #8 G	1-1/2"	4 #1 & 1 #8 G	2"
11	125	3 #1/0 & 1 #6 G	1-1/2"	4 #1/0 & 1 #6 G	2"
12	150	3 #1/0 & 1 #6 G	1-1/2"	4 #1/0 & 1 #6 G	2"
13	175	3 #2/0 & 1 #6 G	2"	4 #2/0 & 1 #6 G	2"
14	200	3 #3/0 & 1 #6 G	2"	4 #3/0 & 1 #6 G	2-1/2"
15	225	3 #4/0 & 1 #4 G	2-1/2"	4 #4/0 & 1 #4 G	3"
16	250	3-350 KCM & 1 #4 G	3"	4-350 KCM & 1 #4 G	3-1/2"
17	300	3-350 KCM & 1 #4 G	3"	4-350 KCM & 1 #4 G	3-1/2"
18	350	3-500 KCM & 1 #2 G	3"	4-500 KCM & 1 #2 G	3-1/2"
19	400	3-600 KCM & 1 #2 G	3-1/2"	4-600 KCM & 1 #2 G	4"
20	500	6-350 KCM & 2 #2 G	(2)3"	8-350 KCM & 2 #2 G	(2)3-1/2"
21	600	6-350 KCM & 2 #1 G	(2)3"	8-350 KCM & 2 #1 G	(2)3-1/2"
22	800	6-600 KCM & 2 #1/0 G	(2)3-1/2"	8-600 KCM & 2 #1/0 G	(2)4"
23	1000	9-500 KCM & 3 #2/0 G	(3)3"	12-500 KCM & 3 #2/0 G	(3)3-1/2"
24	1200	9-800 KCM & 3 #3/0 G	(3)3-1/2"	12-800 KCM & 3 #3/0 G	(3)4"

NOTE: VERIFY THAT TERMINATION POINTS CAN ACCOMMODATE THE FEEDER SIZES.

LIGHTING AND POWER PANELBOARD SCHEDULE

PANEL NAME	MAINS MLO MCB	VOLTAGE	PHASE	WIRE	TOTAL POLES	CIRCUIT BREAKERS ACTIVE AND SPARE						SINGLE POLE SPACES	INTER CAPACITY SYM KILO-AMPS	MOUNTING	NOTES	
						20 1	20 2	20 3	15 2	15 3	30 2					30 3
N2BN2	100	120/208	3	4	42	42								10	SURFACE	
N2BS2	175	120/208	3	4	42	30								10	SURFACE	
CR2BN2	175	120/208	3	4	42	42								10	SURFACE	
CR2BS2	175	120/208	3	4	42	36	1	2						10	SURFACE	

CHARLES ST. TRANSFER SWITCH SCHEDULE

DESIGNATION	BYPASS ISOLATION	VOLTAGE	POLES	AMP RATING	W.S.R. (KAC)	LOCATION	REMARKS
ATS-EQ3	YES	480/277	4	600	65	CHARLES ST.	SINGLE MOTOR OPERATED

EQUIPMENT DISTRIBUTION PANEL "DPEQ4S2" CIRCUIT SCHEDULE

CKT. NO.	BREAKER AMPS POLE	DESCRIPTION	KVA / PHASE			DESCRIPTION	BREAKER AMPS POLE	CKT. NO.
			PHASE A	PHASE B	PHASE C			
1	100 3	RADIOLOGY EQUIPMENT, ROOM #1				RADIOLOGY EQUIPMENT, ROOM #2	100 3	2
3	100 3	RADIOLOGY EQUIPMENT, TRAUMA RM				CT ROOM #1 EQUIPMENT	150 3	4
5	150 3	FUTURE CT ROOM #2 EQUIPMENT				SPACE	100 3	6
7	100 3	SPACE				SPACE	100 3	8
9	100 3	SPACE				SPACE	100 3	10
11	100 3	SPACE				SPACE	100 3	12
13	100 3	SPACE				SPACE	100 3	14

Maine Medical Center
ED Expansion and Renovation
Portland, Maine MMC Project No. 21843

Drawing Title
ELECTRICAL POWER RISER DIAGRAM

Drawn By: AB Commission No. 4696
Approved By: DS Date Issued: 12/14/07

Phase / Package Number Sheet Number
E600