

### GENERAL NOTES

1. AS-BUILT UTILITY LOCATIONS, RIM AND INVERTS ARE BASED SOLELY ON INFORMATION PROVIDED TO SEBAGO TECHNICS, INC. BY OTHERS. CONTRACTOR SHALL VERIFY AS-BUILT LOCATION OF EXISTING UTILITIES PRIOR TO CONSTRUCTION.
2. SITE LIGHTING IS SHOWN FOR REFERENCE AND COORDINATION ONLY. LIGHTING INSTALLED AS PART OF PACKAGE 'C' SCOPE OF WORK.
3. FOOTING LOCATIONS AND ELEVATIONS DESIGNED AS [123'-6"] ARE APPROXIMATE AND SHOWN FOR REFERENCE ONLY. REFER TO STRUCTURAL PLANS FOR ALL FOUNDATION INFORMATION AND DETAILS.

### LEGEND

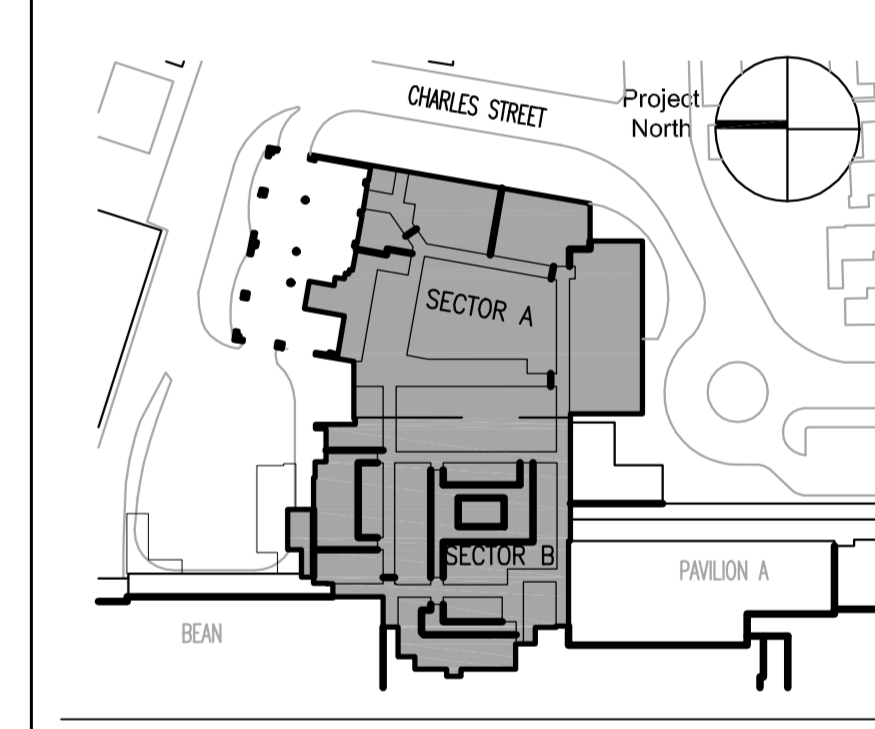
EXISTING	DESCRIPTION	PROPOSED
	BUILDING	
	SIGN	
	EDGE PAVEMENT	
	CURBLINE	
	CONTOURS	
	SPOT GRADE	
	GUARDRAIL	
	WATER	
	GATE VALVE	
	HYDRANT	
	POTABLE WELL	
	SEWER	
	FORCE MAIN	
	SEWER MH	
	STORM DRAIN	
	CATCH BASIN	
	DRAINAGE MH	
	OVERHEAD ELEC. 4 TEL.	
	UNDERGROUND ELEC. 4 TEL.	
	TRANSFORMER PAD	
	ELECTRICAL MANHOLE	
	TELEPHONE MANHOLE	
	LIGHT POLE/WALL	
	UTILITY POLE	
	BOTTOM OF FOOTING ELEVATION (INFORMATION ONLY) SEE STRUCTURAL PLANS VERIFY IN FIELD	

### AS BUILT STRUCTURE SCHEDULE

STRUCTURE	RIM	INV. IN	INV. OUT
SMH-107	-	-	-
SMH-107A (DOGHOUSE)	-	118.56±	118.46±
SMH-108	-	109.60 116.37	109.50
SMH-108A	-	117.20	117.09
DMH-109	-	118.06 (12"RD EAST) 109.86 (12"RD WEST) 109.46	109.36
DMH-110	-	-	-
DMH-110A	-	-	-

NOTE: "-" INDICATES INFORMATION NOT AVAILABLE AT DATE OF PLAN ISSUE. DETERMINE IN FIELD PRIOR TO CONSTRUCTION.

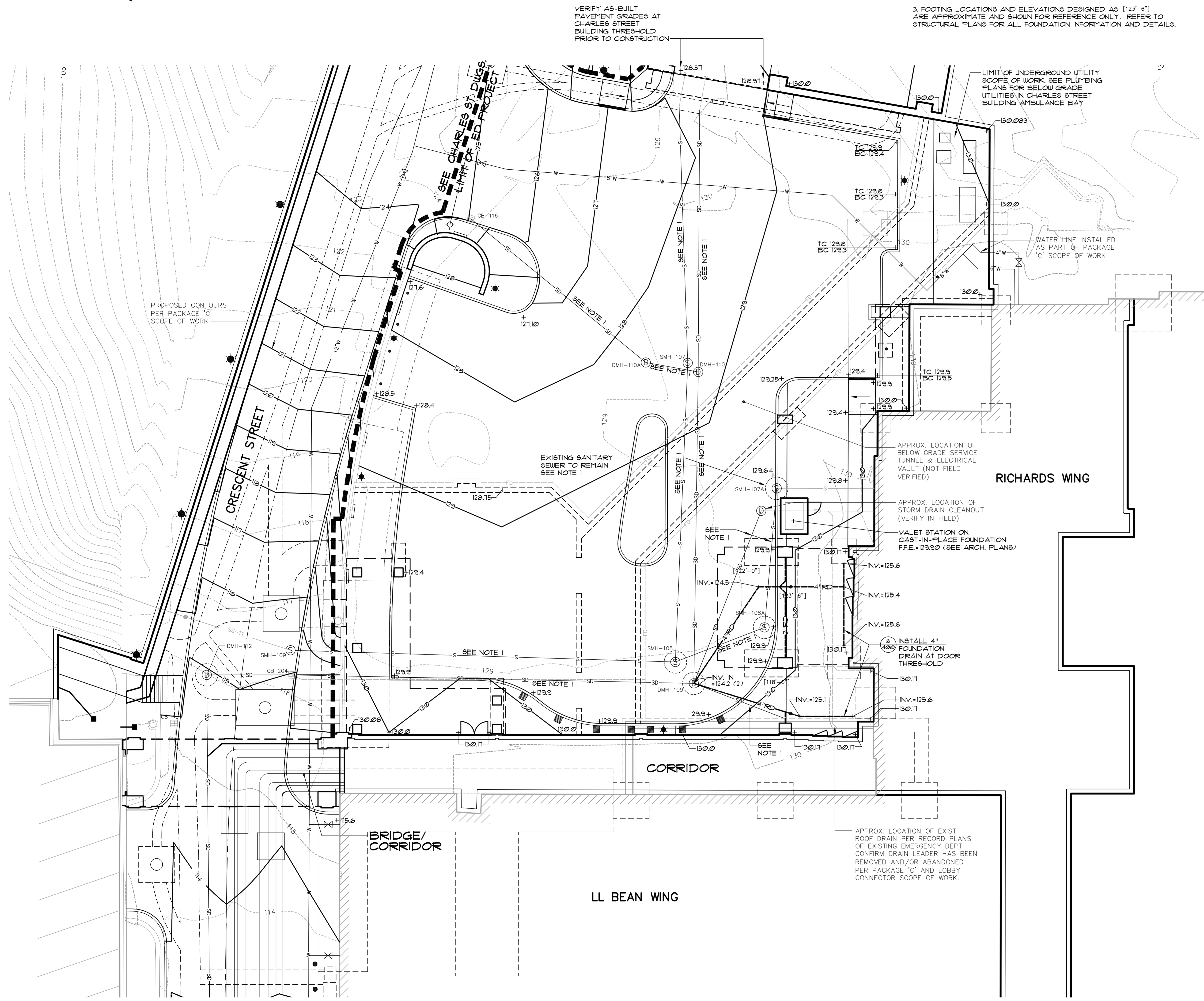
MARK	ISSUE DATE	DESCRIPTION
BID	12/14/07	BID SET
Issue Log		



**TRÖ Jung|Brannen**  
 ARCHITECTURE INTERIOR DESIGN ENGINEERING MASTER PLANNING  
 22 Boston Wharf Road, Boston, Massachusetts 02210  
 Tel 617.502.8400 Fax 617.502.3402 www.trjungbrannen.com

**Maine Medical Center**  
 ED Expansion and Renovation  
 Portland, Maine MMC Project No. 21843

Drawn By	MAL	Commission No.	4696
Approved By	WTC	Date Issued	12/14/07
Phase / Package Number		Sheet Number	<b>C200</b>



VERIFY AS-BUILT PAVEMENT GRADES AT CHARLES STREET BUILDING THRESHOLD PRIOR TO CONSTRUCTION.

LIMIT OF UNDERGROUND UTILITY SCOPE OF WORK. SEE PLUMBING PLANS FOR BELOW GRADE UTILITIES IN CHARLES STREET BUILDING AMBULANCE BAY

RICHARDS WING

CORRIDOR

LL BEAN WING

PROPOSED CONTOURS PER PACKAGE 'C' SCOPE OF WORK

APPROX. LOCATION OF EXIST. ROOF DRAIN PER RECORD PLANS OF EXISTING EMERGENCY DEPT. CONFIRM DRAIN LEADER HAS BEEN REMOVED AND/OR ABANDONED PER PACKAGE 'C' AND LOBBY CONNECTOR SCOPE OF WORK.

### GRAPHIC SCALE

