

**C1** CASSETTE STORAGE DETAIL  
SCALE: 1-1/2" = 1'-0"

**D1** BOOKCASE DETAIL  
SCALE: 1-1/2" = 1'-0"

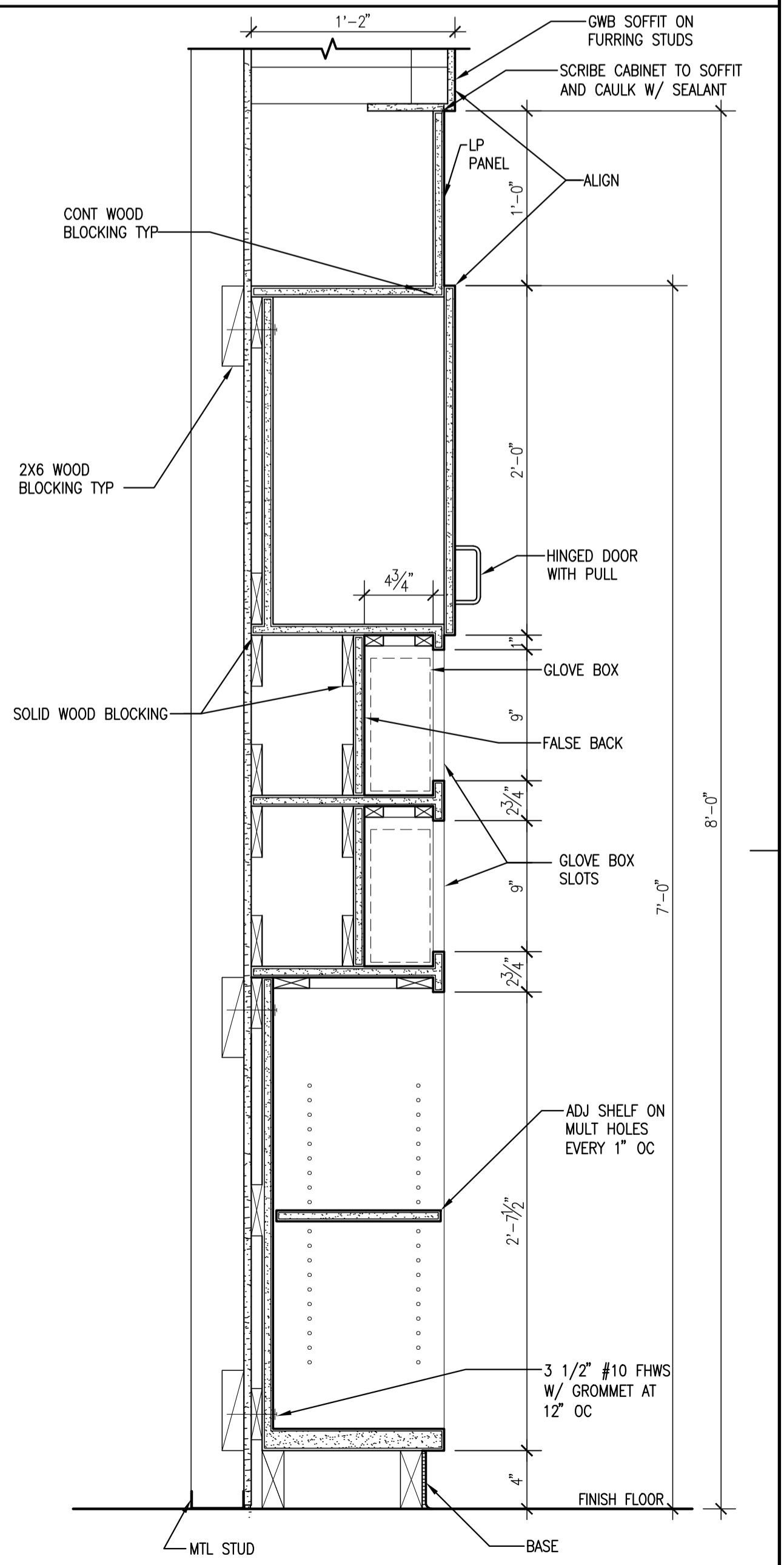
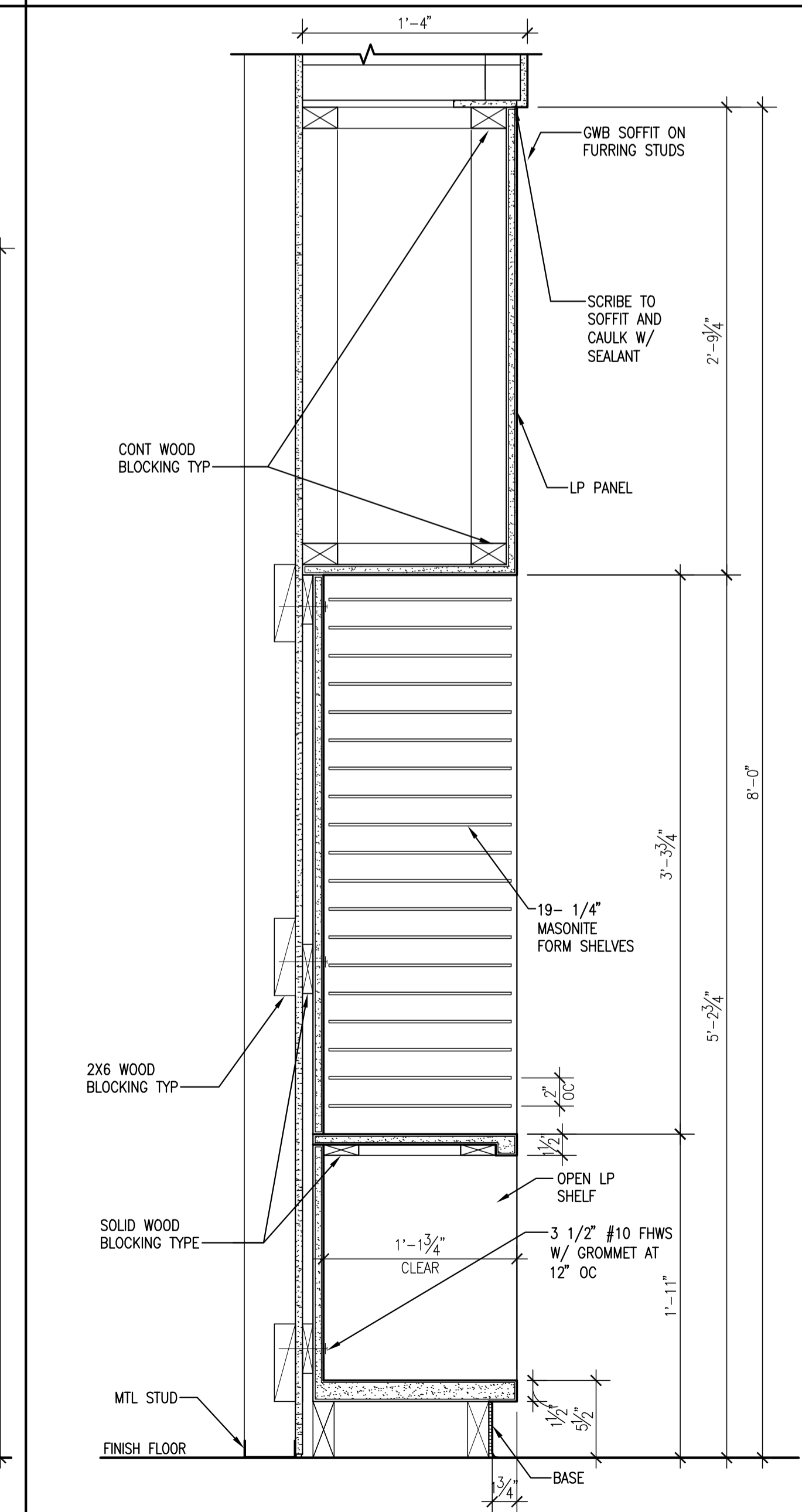
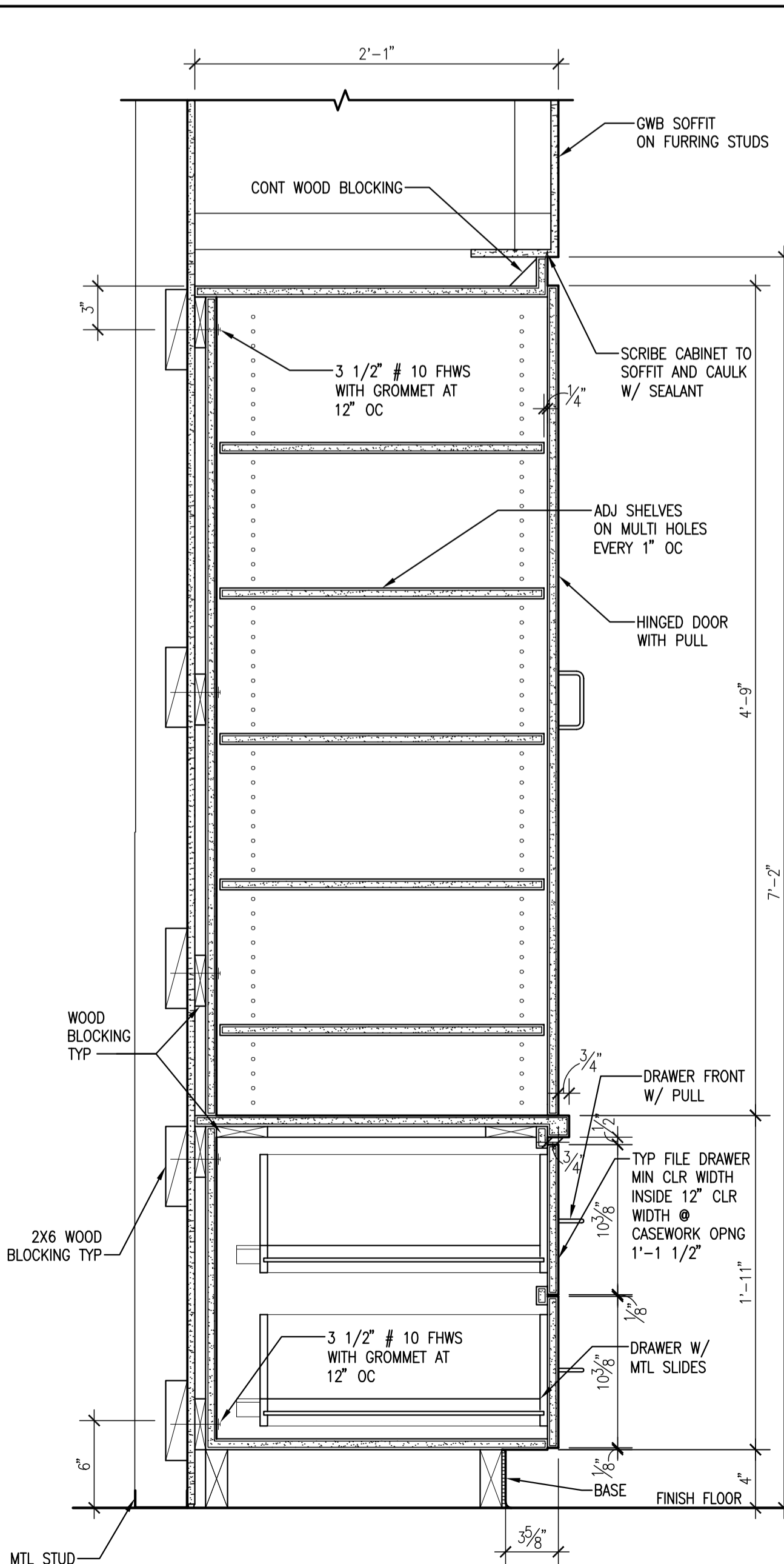
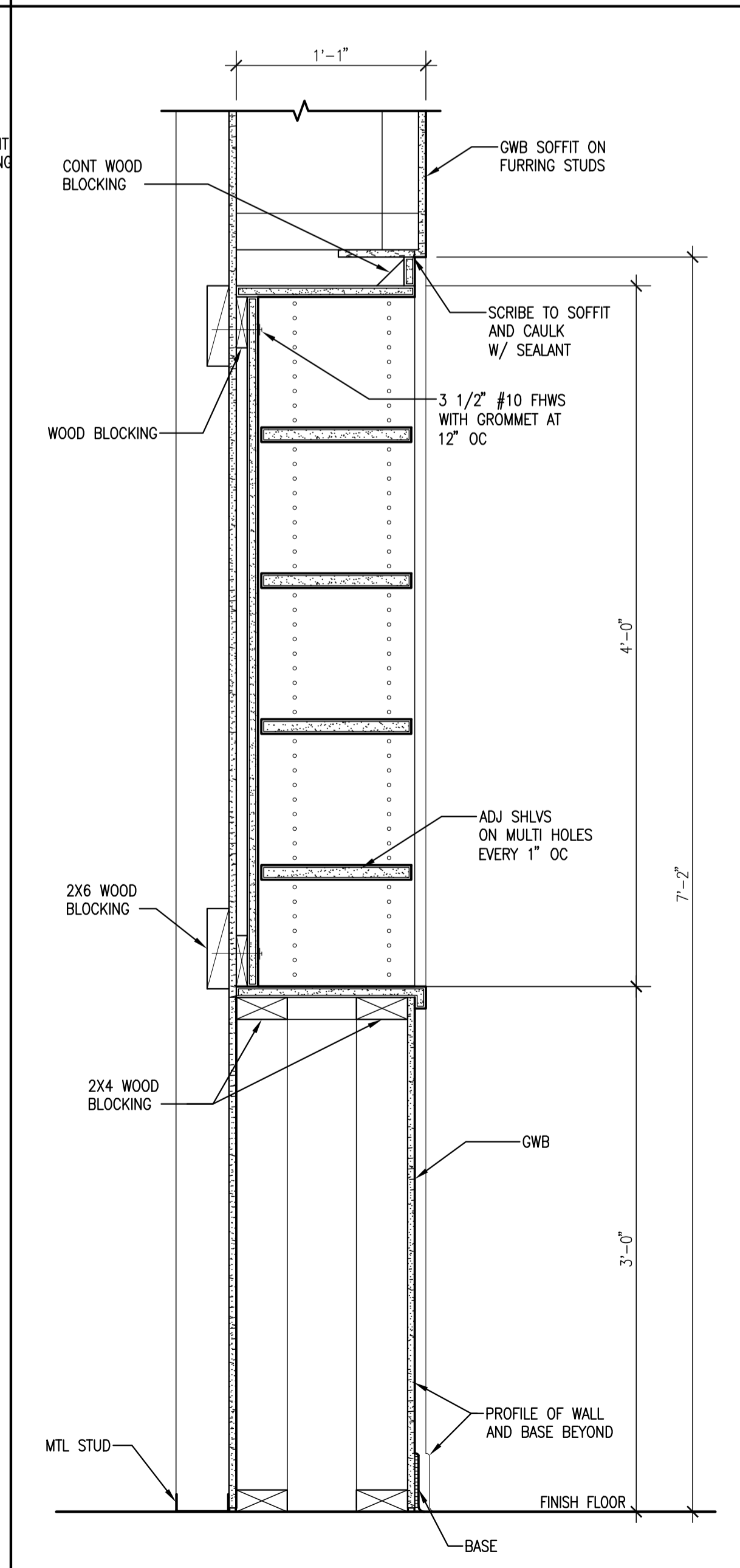
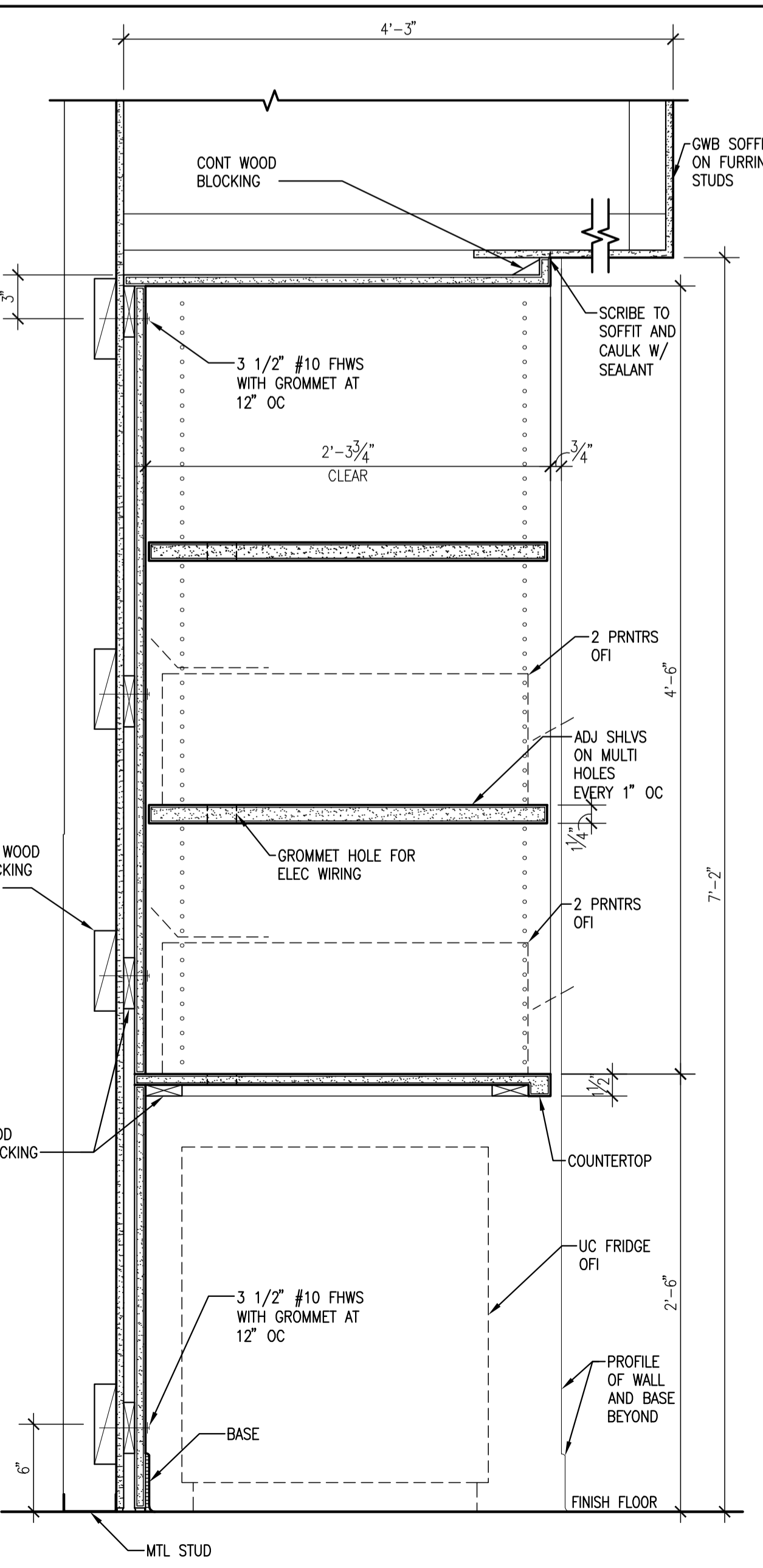
**E1** 14" BENCH DETAIL  
SCALE: 1-1/2" = 1'-0"

**B2** CASEWORK AT REMIS  
SCALE: 1-1/2" = 1'-0"

**C2** FILM SLOTS DETAIL  
SCALE: 1-1/2" = 1'-0"

**D2** MAILBOX DETAIL  
SCALE: 1-1/2" = 1'-0"

**E2** LP MONITOR SECTION  
SCALE: 1-1/2" = 1'-0"



**A4** FULL HEIGHT PRINTER CASEWORK DETAIL  
SCALE: 1-1/2" = 1'-0"

**B4** SHELVING AT WRK STA B559-ER  
SCALE: 1-1/2" = 1'-0"

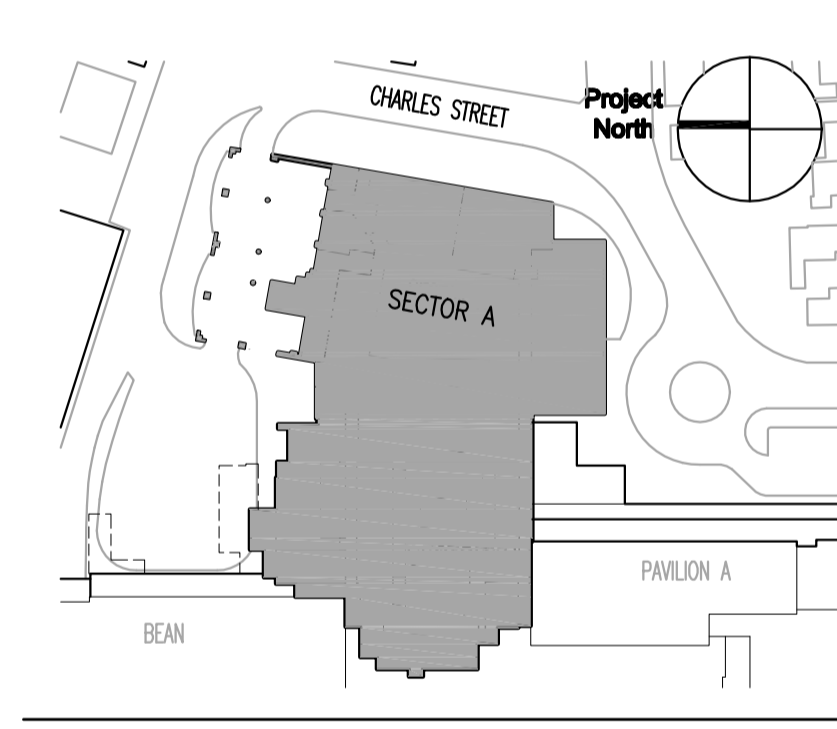
**C4** ULTRASOUND CASEWORK DETAIL  
SCALE: 1-1/2" = 1'-0"

**D4** FORM HOLDER DETAIL  
SCALE: 1-1/2" = 1'-0"

**E4** PRECAUTIONARY CASEWORK DETAIL  
SCALE: 1-1/2" = 1'-0"

MARK	ISSUE DATE	DESCRIPTION
BID	12/14/07	BID SET

Issue Log



**TRO Jung|Brannen**  
 ARCHITECTURE INTERIOR DESIGN ENGINEERING MASTER PLANNING  
 22 Boston Wharf Road, Boston, Massachusetts 02210  
 Tel: 617.502.9400 Fax: 617.502.3402 www.trojngbrannen.com

**Maine Medical Center**  
 ED Expansion and Renovation  
 Portland, Maine MMC Project No. 21843

Drawing Title  
**CASEWORK DETAILS**

Drawn By	KFEC	Commission No.	4696
Approved By	AF	Date Issued	12/14/07

Phase / Package Number: \_\_\_\_\_ Sheet Number: **A812**

Copyright © 2007 TRO Jung|Brannen P:\Maine Medical\4696-Emers-4696A812