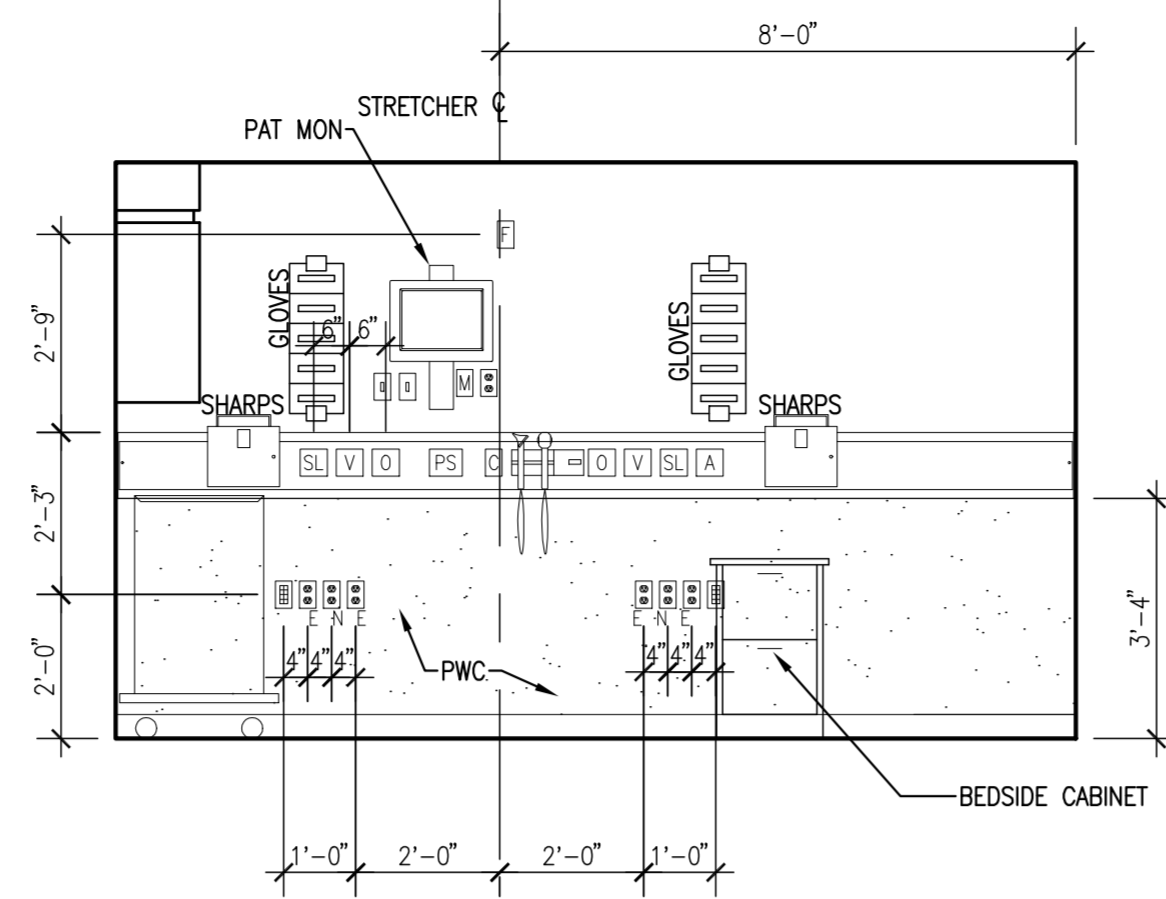
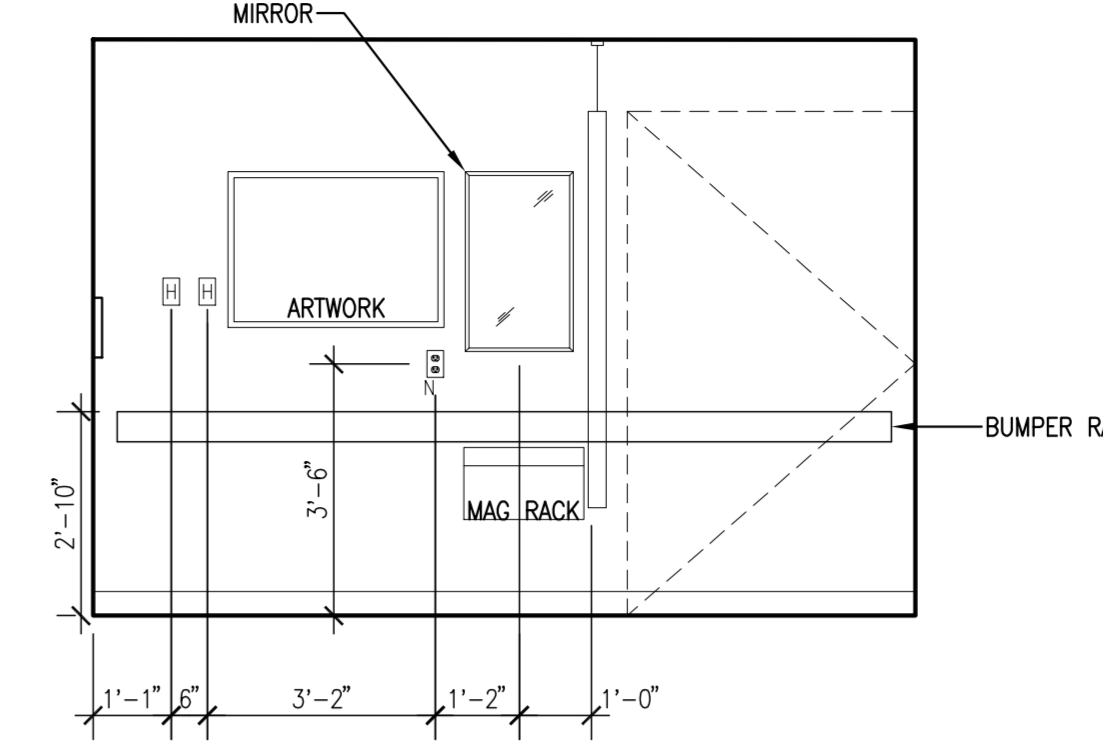


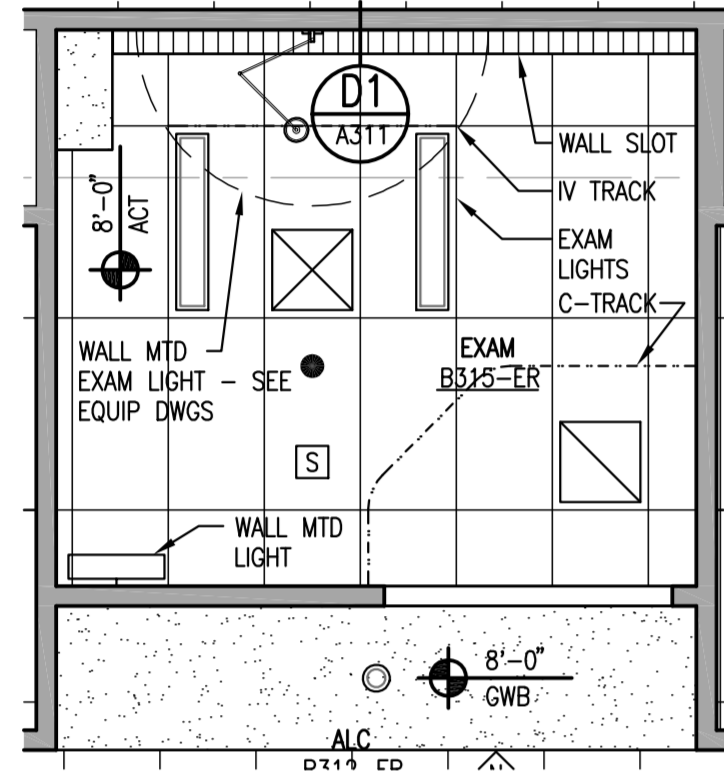
A1 CDU FLOOR PLAN
SCALE: 1/4" = 1'-0"



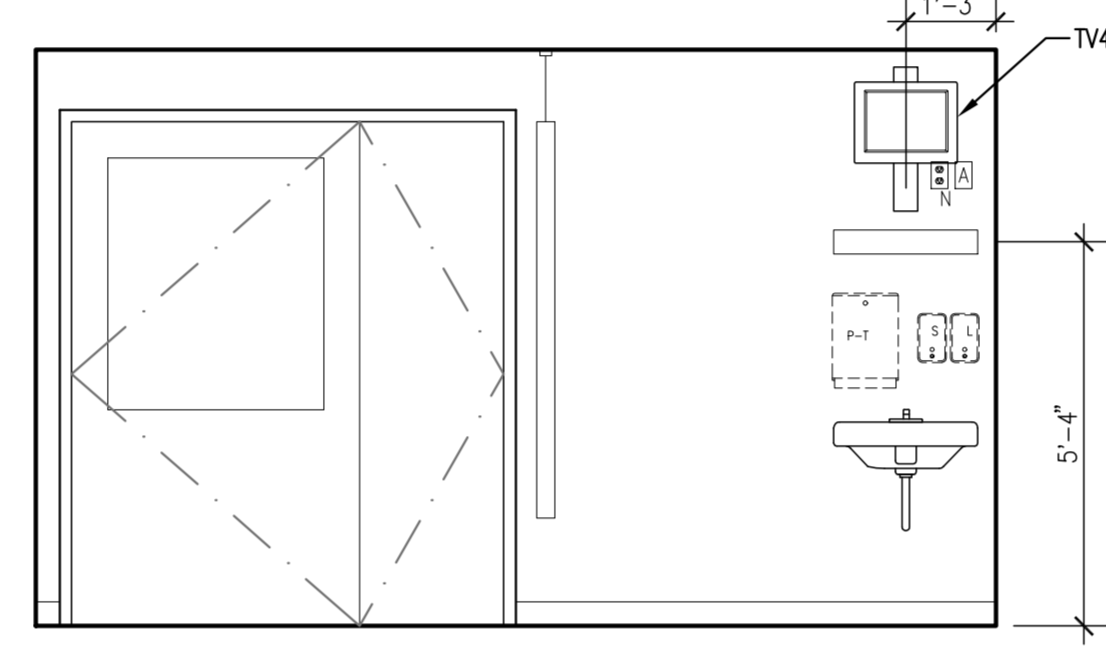
1 CDU HEADWALL
SCALE: 3/8" = 1'-0"



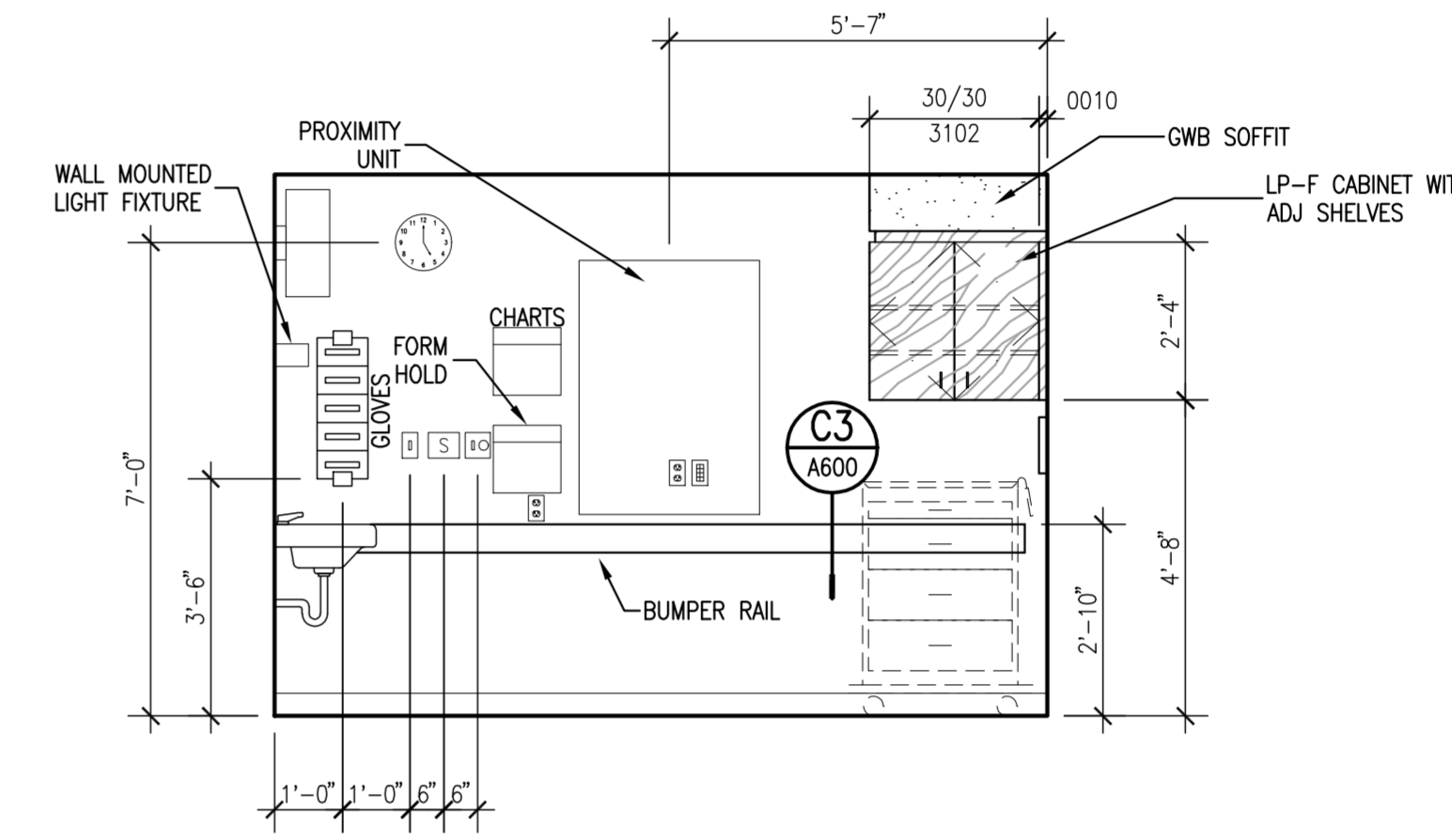
2 CDU FAMILY SIDE
SCALE: 3/8" = 1'-0"



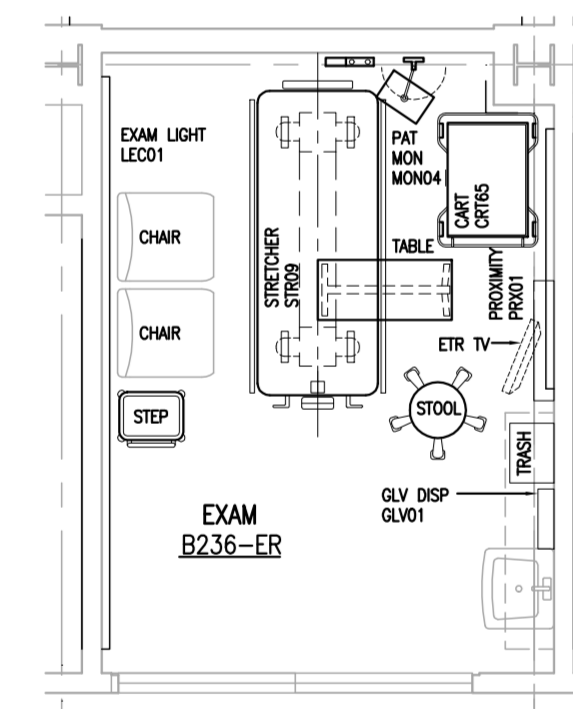
A2 CDU REFLECTED CEILING PLAN
SCALE: 1/4" = 1'-0"



3 CDU CORRIDOR SIDE
SCALE: 3/8" = 1'-0"



4 CDU STAFF SIDE
SCALE: 3/8" = 1'-0"



A3 AMBULATORY CARE FLOOR PLAN
SCALE: 1/4" = 1'-0"

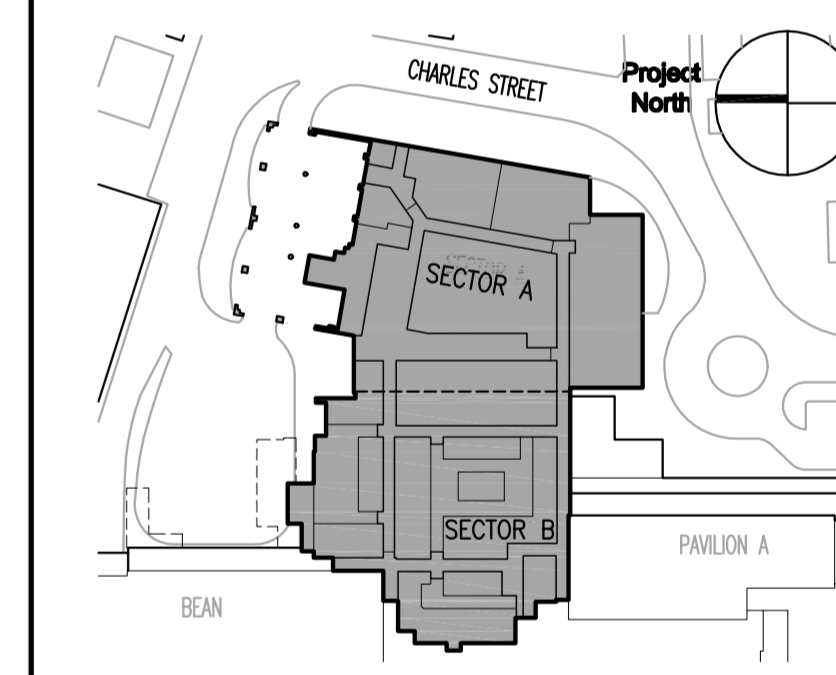
General Notes:

- PROVIDE END PANELS WHERE CASEWORK DOES NOT ABUT WALL. -SEE DETAIL AX/AXXX
- PROVIDE 1-1/2" (MIN.) FILLER PIECE ON WALL & BASE CABINETS AND 1-1/2" (MIN.) EXTENSION TO COUNTER WHERE ENDS OF CASEWORK ABUT WALL.
- FIELD VERIFY ALL DIMENSIONS PRIOR TO FABRICATION AND INSTALLATION.
- PROVIDE 2-1/2" LIGHT VALANCE WHERE TASK LIGHTING IS INDICATED UNDER WALL CABINETS
- WHERE VALANCES ARE PROVIDED, EXTEND SIDE PANELS OF WALL CABINET TO MATCH LIGHT VALANCE DIMENSION IF CABINET DOES NOT TERMINATE AT A WALL.
- PROVIDE VALANCES AND BACKPLASHES IN LONGEST POSSIBLE LENGTH OF MATERIAL TO MINIMIZE JOINTS
- FILLER PIECE SCRIBED TO SOFFIT AND WALL (TYP) -SEE DETAIL AX/AXXX
- CUSTOM CABINETS SHALL BE DESIGNATED AS FOLLOWS:
 CABINET WIDTH
 CABINET HEIGHT
 30/36
 XX/AXXX
 DETAIL/SHEET NO.

SEE ELECTRICAL DRAWINGS FOR ADDITIONAL LIGHT SYMBOL LEGEND

MARK	COMPONENTS ON EACH BOOM (4 TYP)
[Symbol]	HOOK
[Symbol]	TV CONNECTION
[Symbol]	MONITOR CONNECTION
[Symbol]	LIGHT SWITCH
[Symbol]	SURGICAL LIGHT SWITCH
[Symbol]	SLIDE
[Symbol]	VACUUM
[Symbol]	OXYGEN
[Symbol]	MEDICAL AIR
[Symbol]	STAFF ASSIST/ CODE
[Symbol]	BLUE DUPLEX - EMER
[Symbol]	DUPLEX - NORM
[Symbol]	TEL/DATA
[Symbol]	PATIENT STATION
[Symbol]	FIRE AUX MOD
[Symbol]	WALL PHONE
[Symbol]	OTO/OPHTHALMOSCOPE
[Symbol]	1 - SURGICAL LIGHT
[Symbol]	4 - VACUUM
[Symbol]	4 - OXYGEN
[Symbol]	4 - SLIDES
[Symbol]	2 - MEDICAL AIR
[Symbol]	4 - RECEPTACLES (NORMAL)
[Symbol]	6 - RECEPTACLES (EMER)
[Symbol]	2 - TEL/DATA
[Symbol]	MONITOR ON BRACKET WITH POWER AND MONITOR CONNECTION
[Symbol]	GLOVE BOX (S)
[Symbol]	SHARPS CONTAINER

MARK	ISSUE DATE	DESCRIPTION
BID	12/14/07	BID SET
Issue Log		



TRO Jung|Brannen
 ARCHITECTURE INTERIOR DESIGN ENGINEERING MASTER PLANNING
 22 Boston Wharf Road, Boston, Massachusetts 02210
 Tel 617.502.8400 Fax 617.502.3402 www.trojungbrannen.com

Maine Medical Center
 ED Expansion and Renovation
 Portland, Maine MMC Project No. 21843

Drawing Title
CDU AND AMBULATORY CARE PLANS, RCPS AND ELEVATIONS

Drawn By	KFEC	Commission No.	4696
Approved By	AF	Date Issued	12/14/07

Phase / Package Number	Sheet Number
	A730

Copyright © 2007 TRO Jung|Brannen P:\Maine Medical\4696 - Emergency\A730.dwg