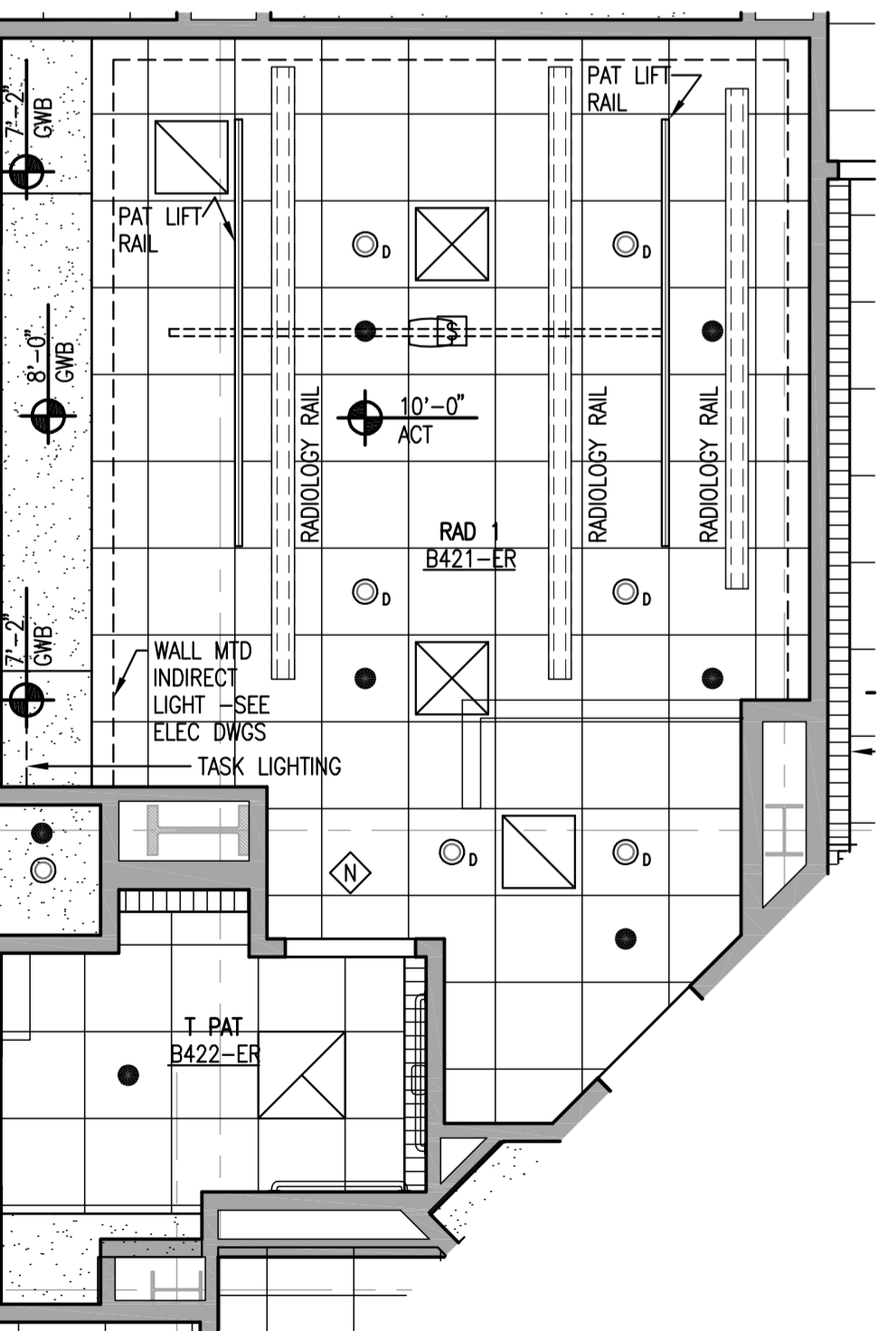
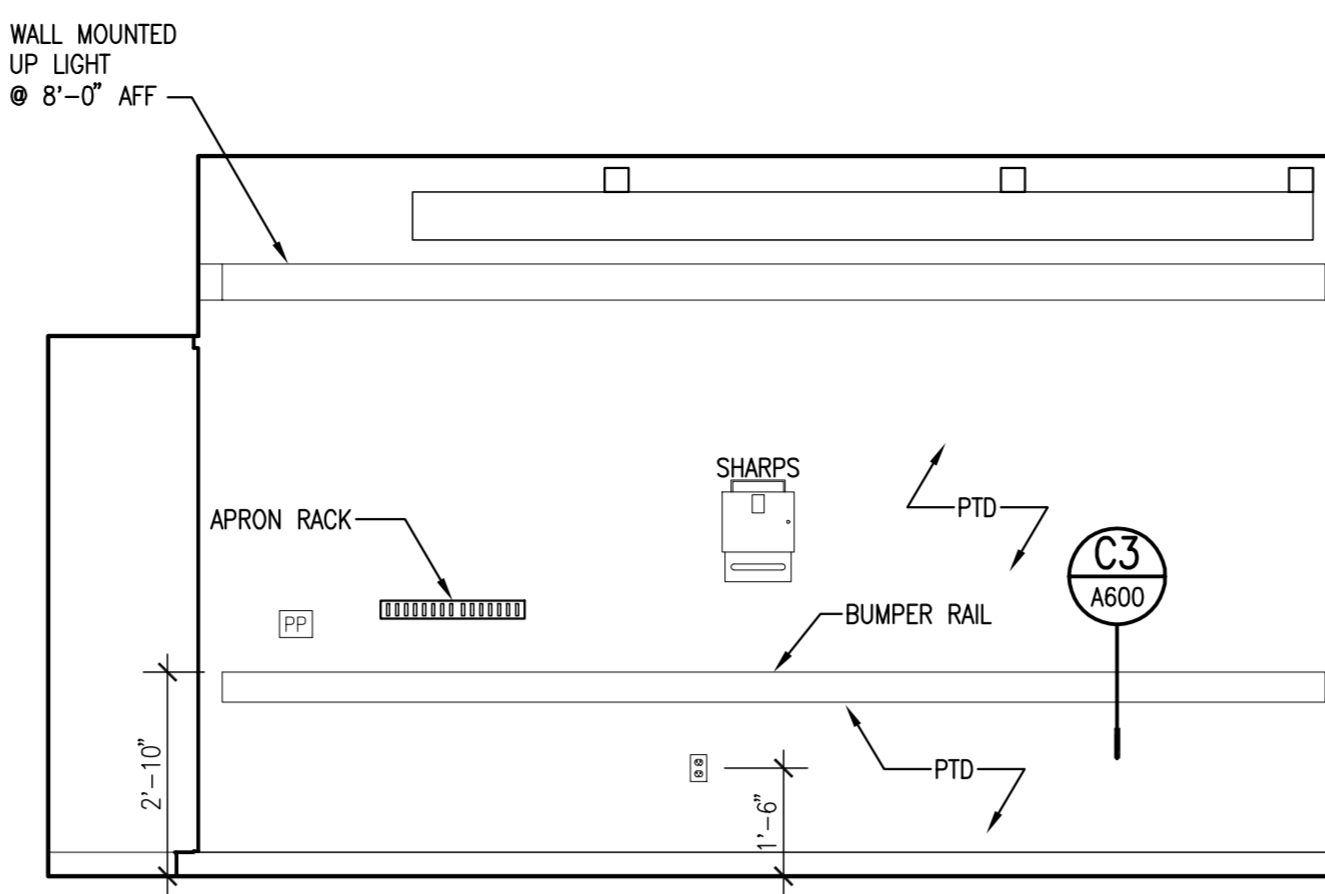


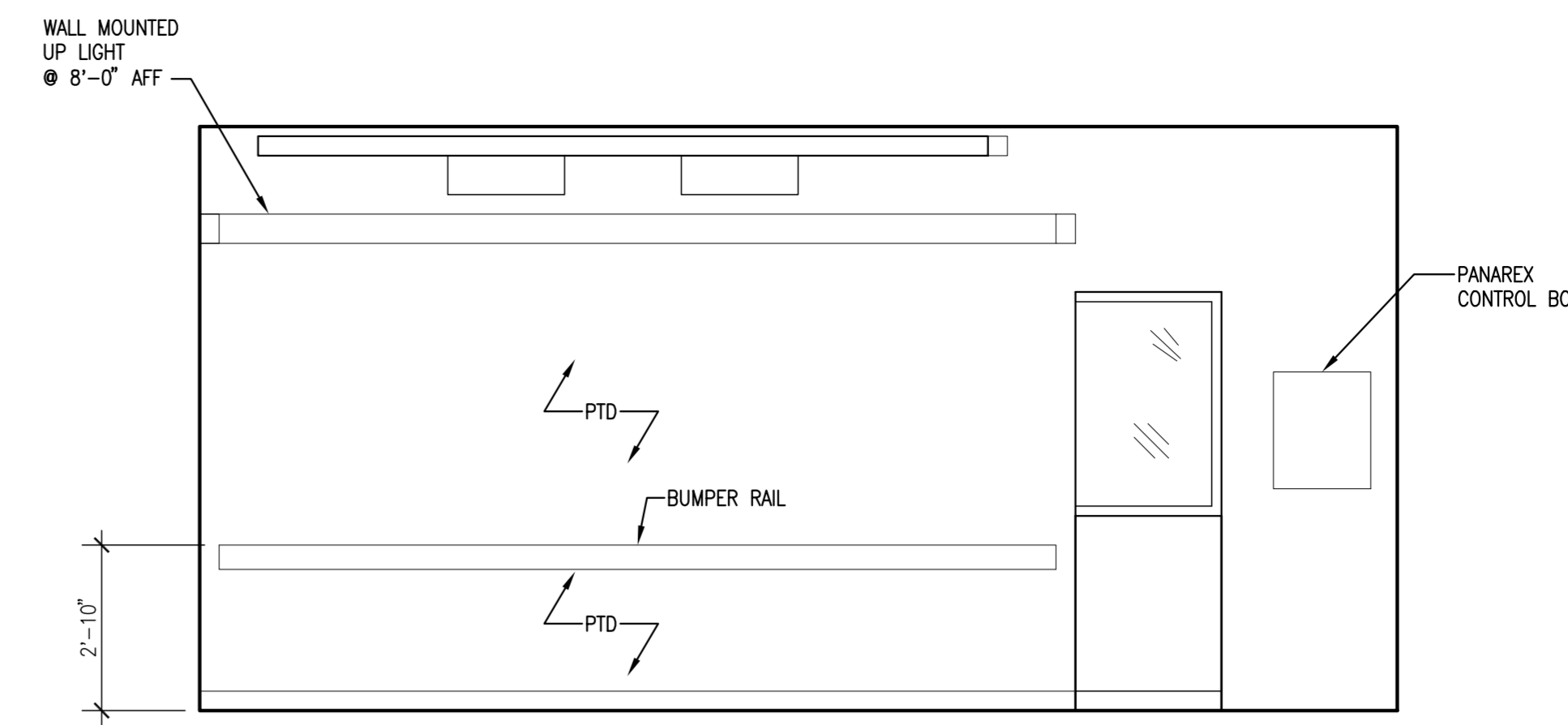
A2 RADIOLOGY/ FLUOROSCOPIC FLOOR PLAN
SCALE: 1/4" = 1'-0"



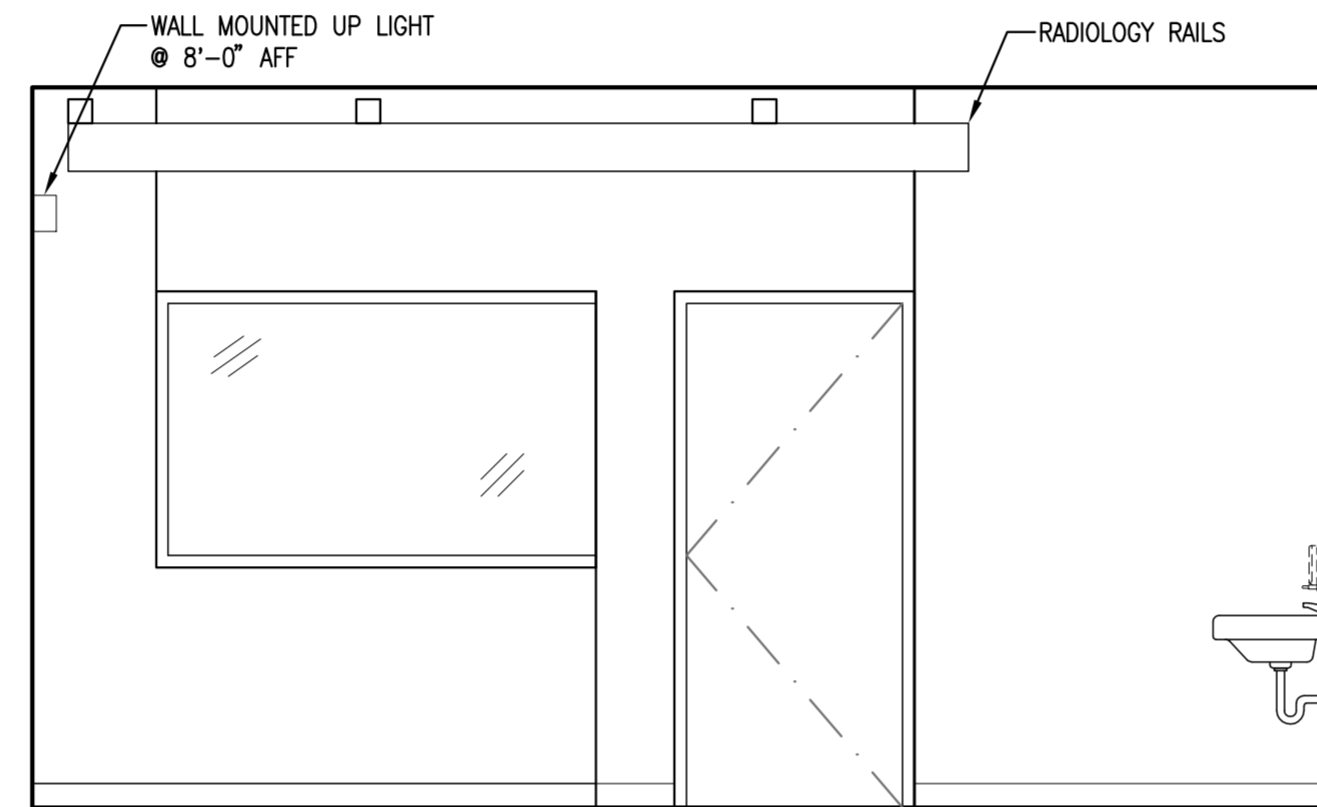
A4 RADIOLOGY/ FLUOROSCOPIC REFLECTED CEILING PLAN
SCALE: 1/4" = 1'-0"



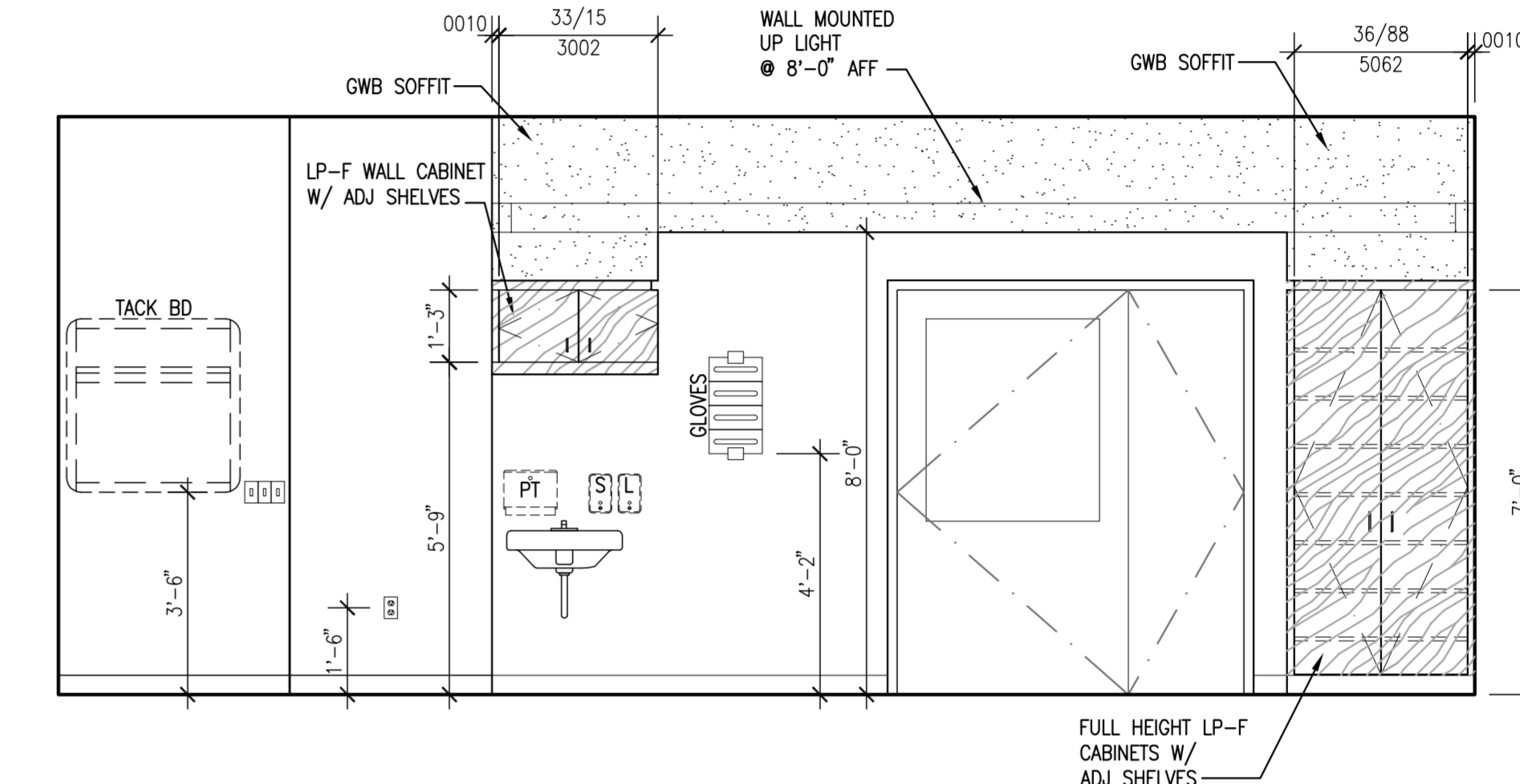
1 RADIOLOGY DEPARTMENT RAD 1 B421-ER
SCALE: 3/8" = 1'-0"



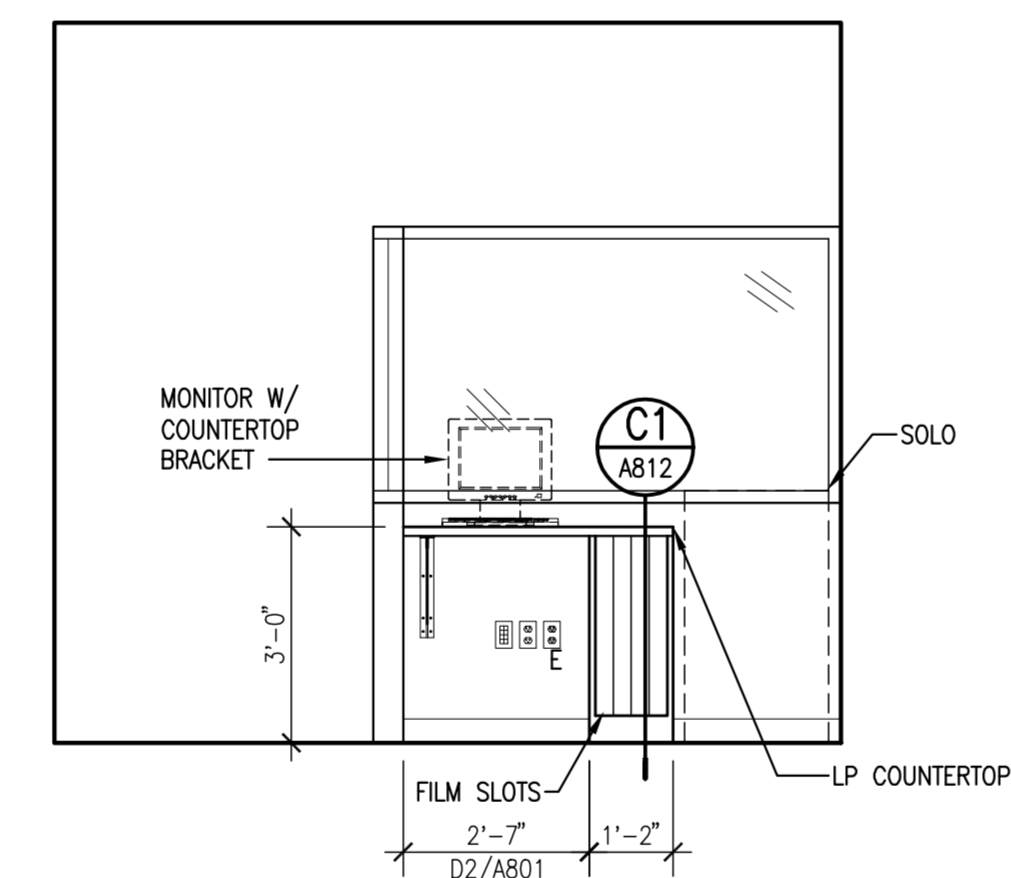
2 RADIOLOGY DEPARTMENT RAD 1 B421-ER
SCALE: 3/8" = 1'-0"



3 RADIOLOGY DEPARTMENT RAD 1 B421-ER
SCALE: 3/8" = 1'-0"



4 RADIOLOGY DEPARTMENT RAD 1 B421-ER
SCALE: 3/8" = 1'-0"



5 RADIOLOGY DEPARTMENT RAD 1 B421-ER
SCALE: 3/8" = 1'-0"

General Notes:

- PROVIDE END PANELS WHERE CASEWORK DOES NOT ABUT WALL. -SEE DETAIL AX/AXXX
- PROVIDE 1-1/2" (MIN.) FILLER PIECE ON WALL & BASE CABINETS AND 1-1/2" (MIN.) EXTENSION TO COUNTER WHERE ENDS OF CASEWORK ABUT WALL.
- FIELD VERIFY ALL DIMENSIONS PRIOR TO FABRICATION AND INSTALLATION.
- PROVIDE 2-1/2" LIGHT VALANCE WHERE TASK LIGHTING IS INDICATED UNDER WALL CABINETS.
- WHERE VALANCES ARE PROVIDED, EXTEND SIDE PANELS OF WALL CABINET TO MATCH LIGHT VALANCE DIMENSION IF CABINET DOES NOT TERMINATE AT A WALL.
- PROVIDE VALANCE AND BACKSPASHES IN LONGEST POSSIBLE LENGTH OF MATERIAL TO MINIMIZE JOINTS.
- FILLER PIECE SCRIBED TO SOFFIT AND WALL (TYP) -SEE DETAIL AX/AXXX
- CUSTOM CABINETS SHALL BE DESIGNATED AS FOLLOWS:

CABINET WIDTH	30/36
CABINET HEIGHT	XX/AXXX
- SEE ELECTRICAL DRAWINGS FOR ADDITIONAL LIGHT

SYMBOL LEGEND

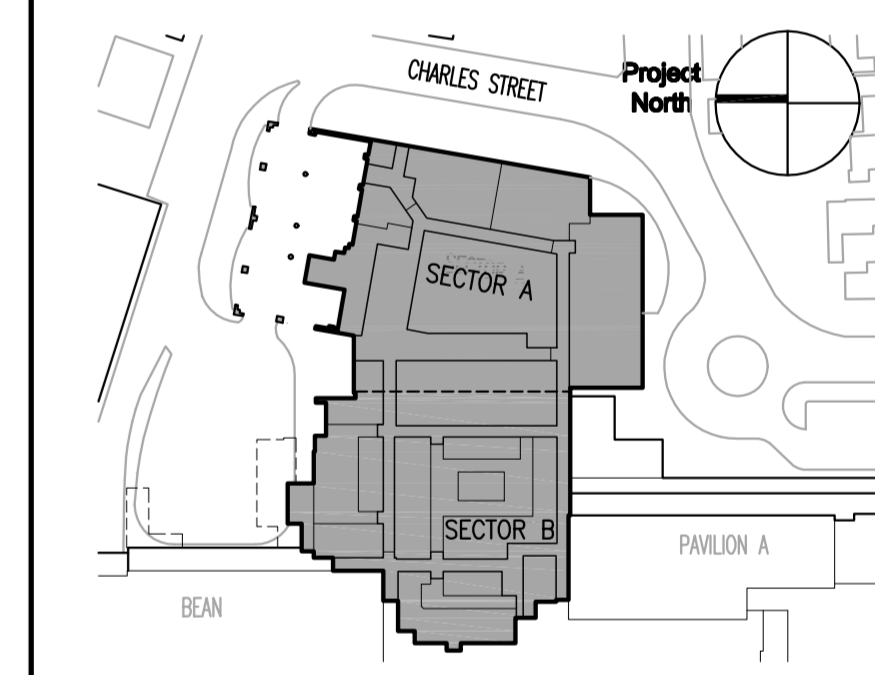
MARK	COMPONENTS ON EACH BOOM (4 TYP)
[Symbol]	HOOK
[Symbol]	TV CONNECTION
[Symbol]	MONITOR CONNECTION
[Symbol]	LIGHT SWITCH
[Symbol]	SURGICAL LIGHT SWITCH
[Symbol]	SLIDE
[Symbol]	VACUUM
[Symbol]	OXYGEN
[Symbol]	MEDICAL AIR
[Symbol]	STAFF ASSIST/ CODE
[Symbol]	BLUE DUPLEX - EMER
[Symbol]	DUPLEX - NORM
[Symbol]	TEL/DATA
[Symbol]	PATIENT STATION
[Symbol]	STAFF REG
[Symbol]	FIRE AUX MOD
[Symbol]	WALL PHONE
[Symbol]	OTO/ OPHTHALMOSCOPE
[Symbol]	MONITOR ON BRACKET WITH POWER AND MONITOR CONNECTION
[Symbol]	GLOVE BOX (5)
[Symbol]	SHARPS CONTAINER

MARK **ISSUE DATE** **DESCRIPTION**

MARK	ISSUE DATE	DESCRIPTION

BID: 12/14/07 BID SET

Issue Log



Key Plan

TRO Jung|Brannen
ARCHITECTURE INTERIOR DESIGN ENGINEERING MASTER PLANNING
22 Boston Wharf Road, Boston, Massachusetts 02210
Tel 617.502.8400 Fax 617.502.3402 www.trojungbrannen.com

Maine Medical Center
ED Expansion and Renovation
Portland, Maine MMC Project No. 21843

Drawing Title
RADIOLOGY 1 PLAN RCP AND ELEVATIONS

Drawn By	KFEC	Commission No.	4696
Approved By	AF	Date Issued	12/14/07

Phase / Package Number	Sheet Number
	A728

Copyright © 2007 TRO Jung|Brannen P:\Maine Medical\4696 - Emergency...A728.dwg