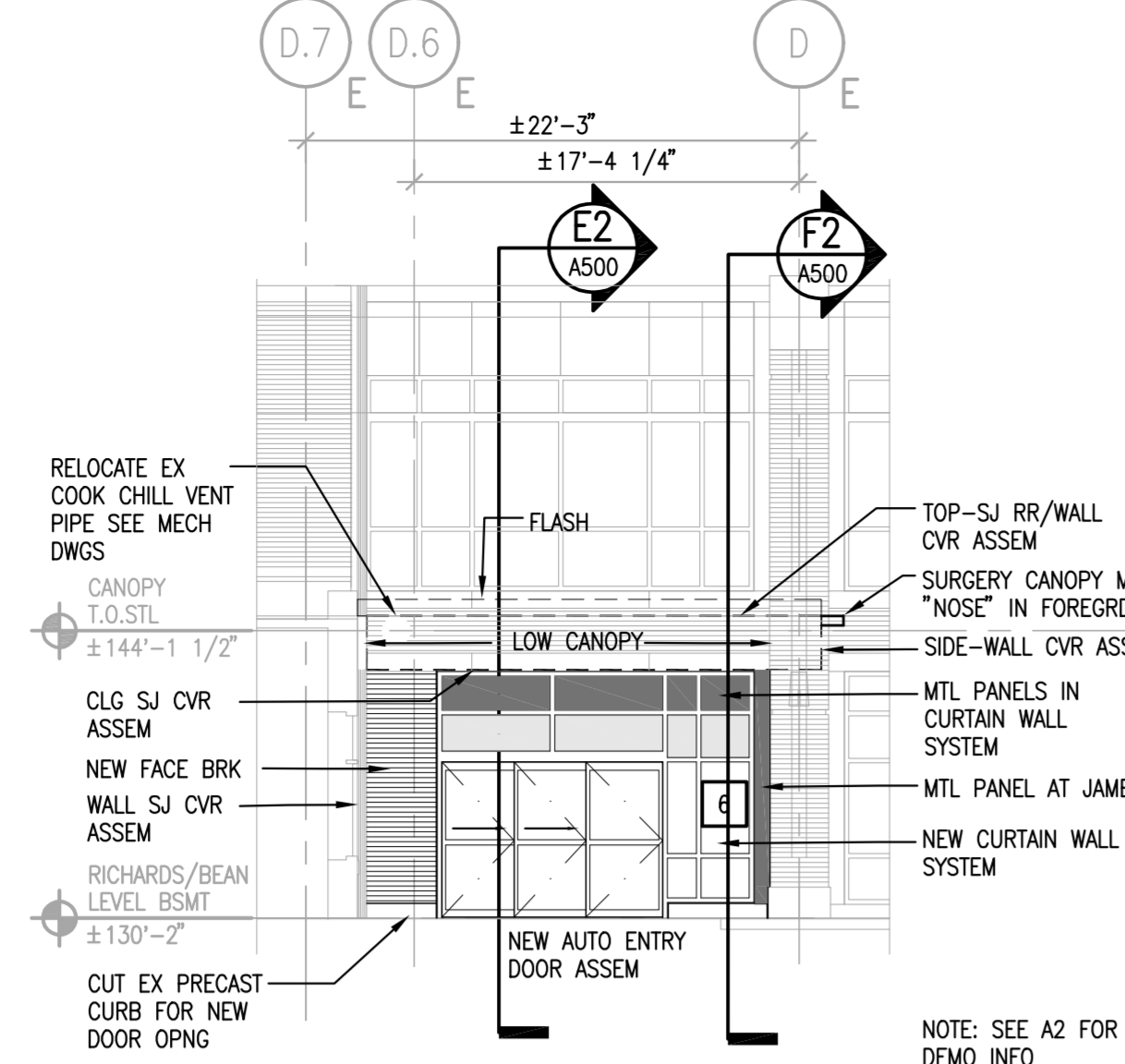
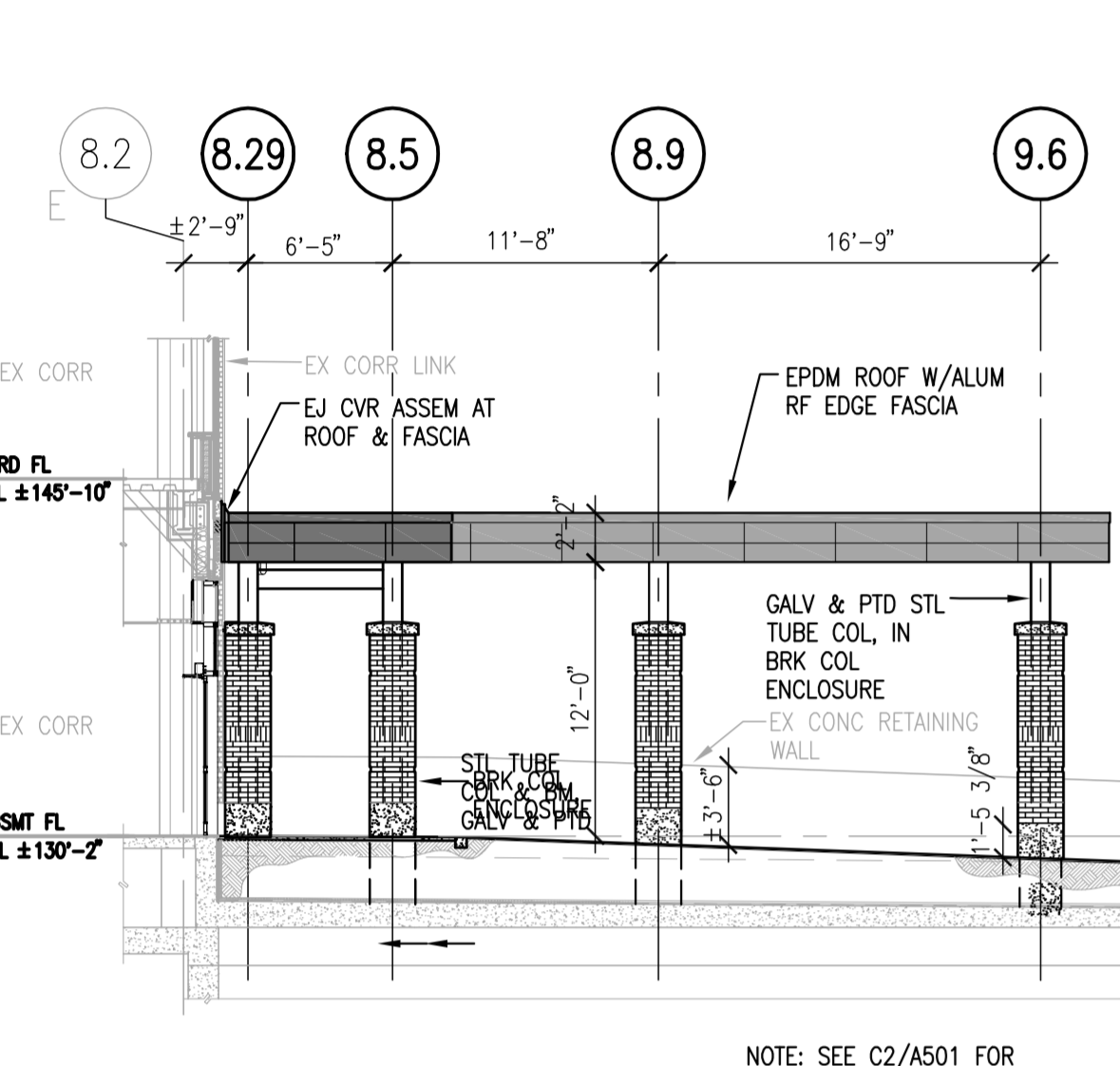


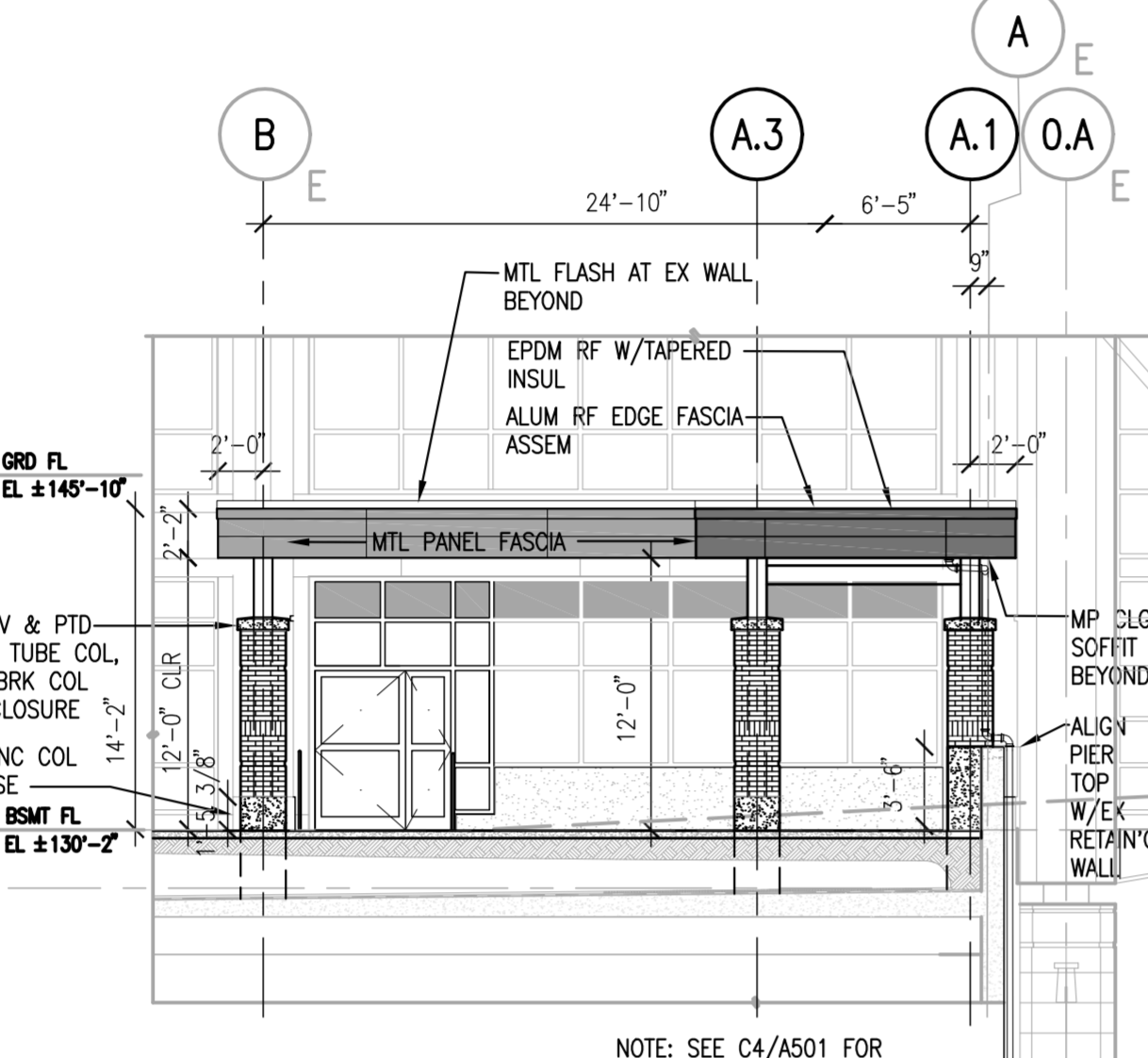
A1 PARTIAL DEMOLITION AT EAST ELEVATION
SCALE: 1/8" = 1'-0"



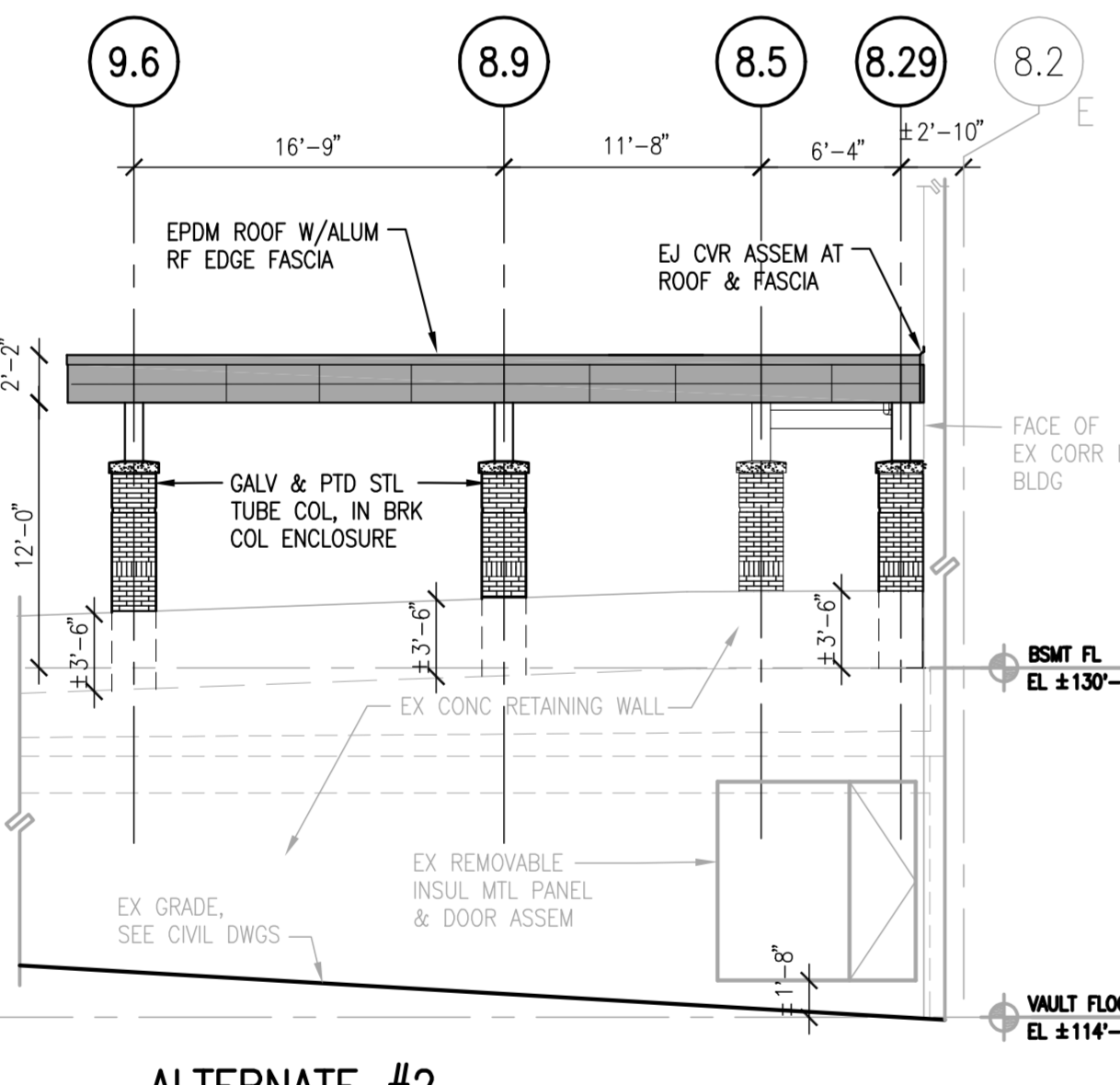
B1 PARTIAL EAST ELEVATION
SCALE: 1/8" = 1'-0"



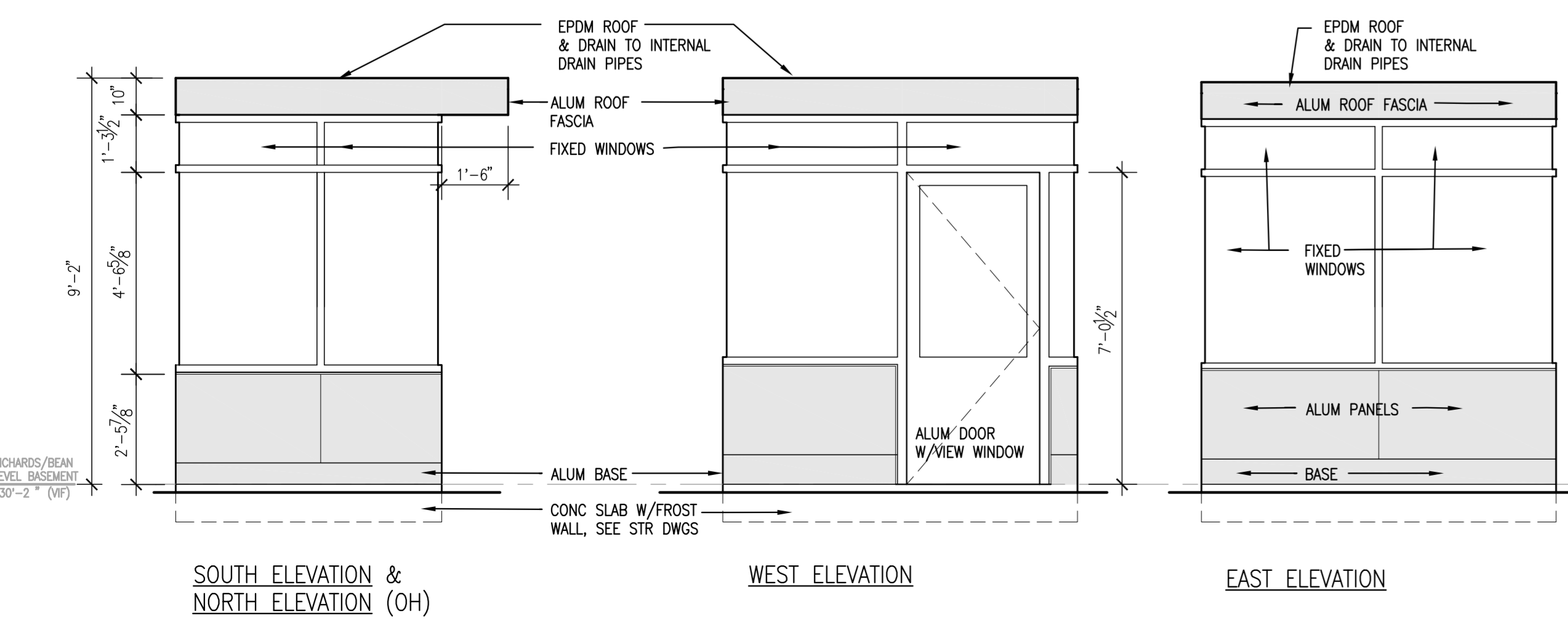
A2 ALTERNATE #2 ADMIT CANOPY SOUTH ELEVATION
SCALE: 1/8" = 1'-0"



B2 ALTERNATE #2 ADMIT CANOPY EAST ELEVATION
SCALE: 1/8" = 1'-0"

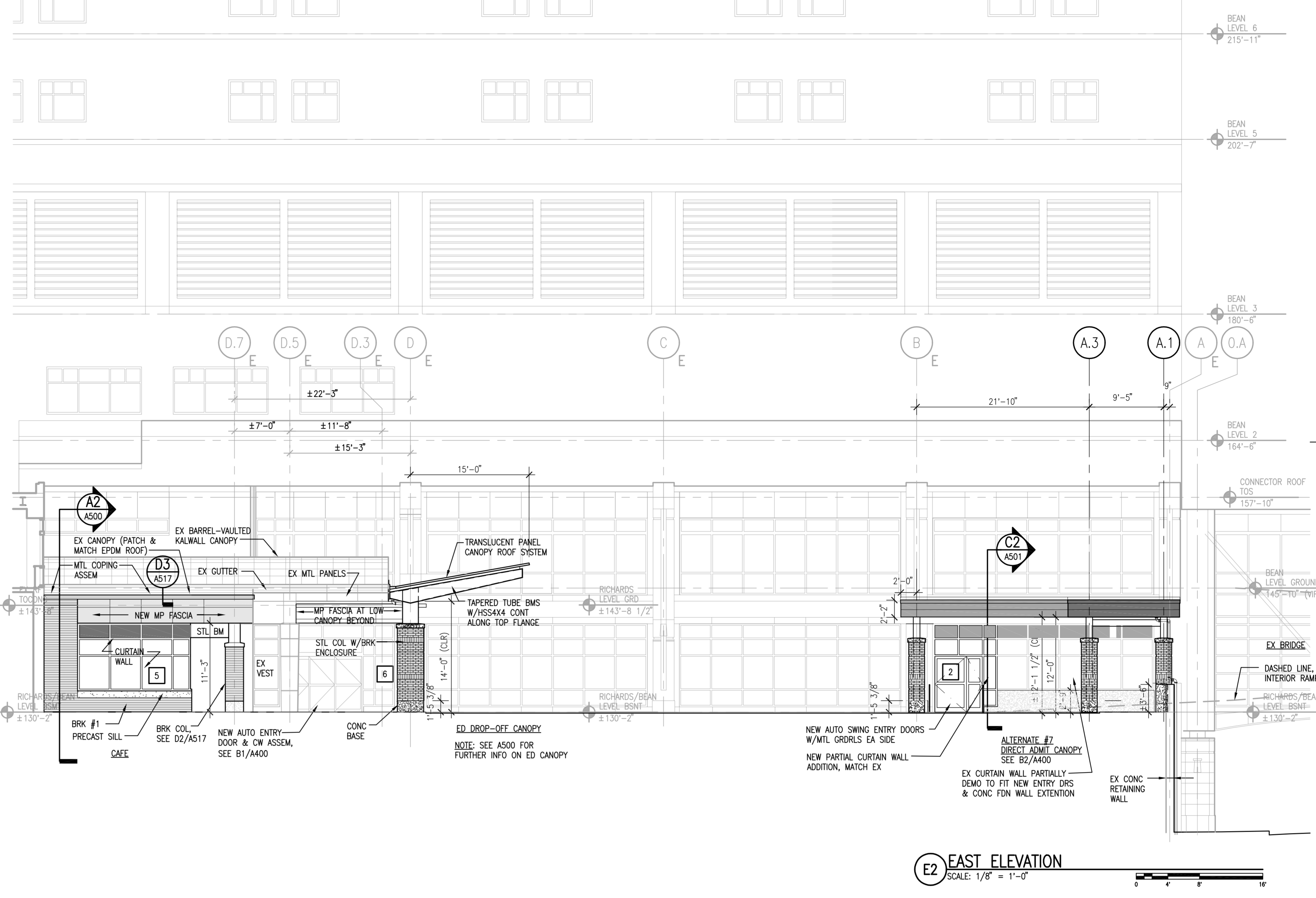


B3 ALTERNATE #2 ADMIT CANOPY NORTH ELEVATION
SCALE: 1/8" = 1'-0"

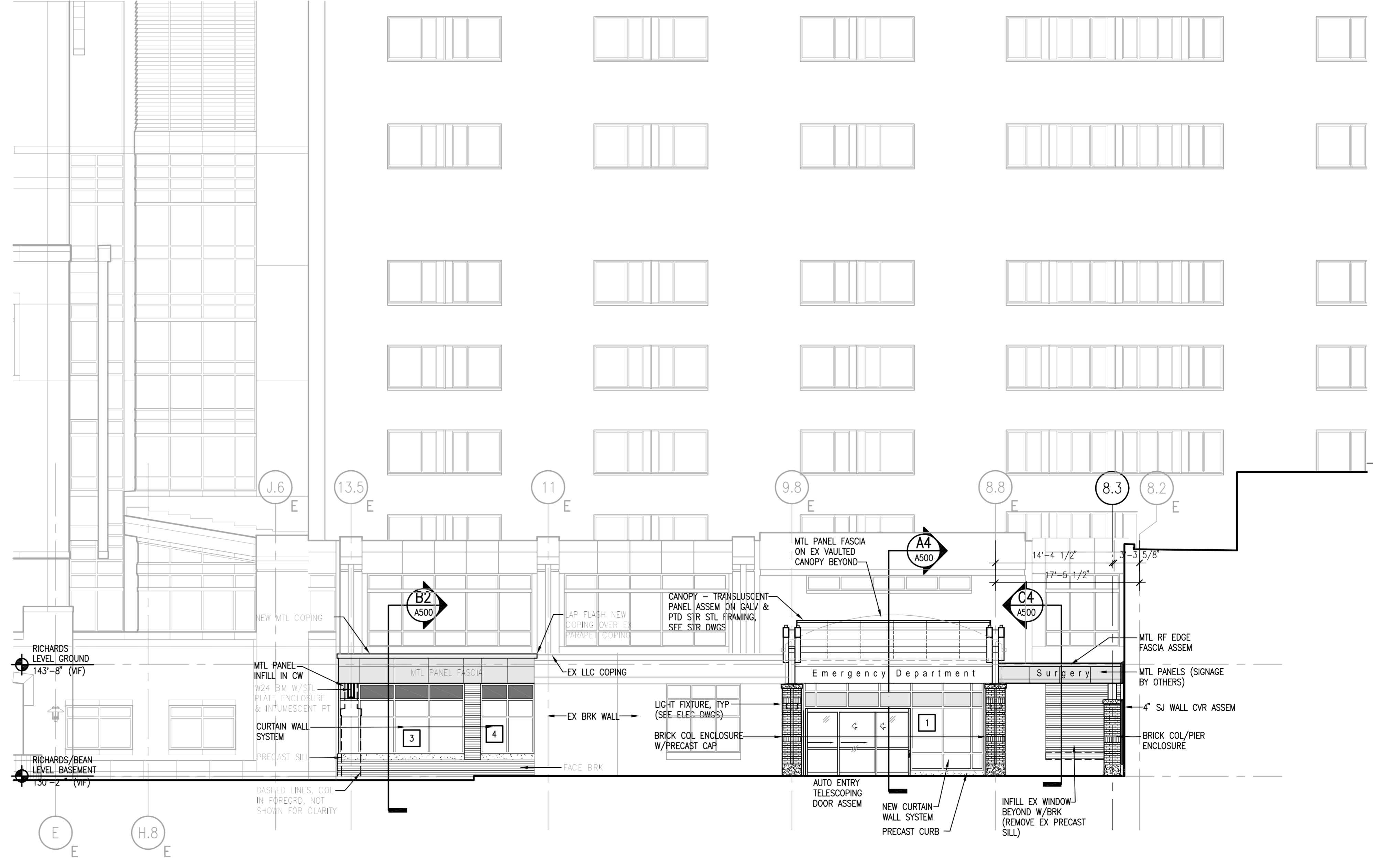


A4 PREFABRICATED VALET BOOTH
SCALE: 3/8" = 1'-0"

NOTES:
1) FOR PLAN & SITE LOCATION INFORMATION, SEE BASEMENT LEVEL PLANS
2) SEE SPECIFICATIONS AND MEP DRAWINGS FOR ADDITIONAL INFORMATION
3) FOR STRUCTURAL SLAB-ON-GRADE SUPPORT, SEE STR DWGS

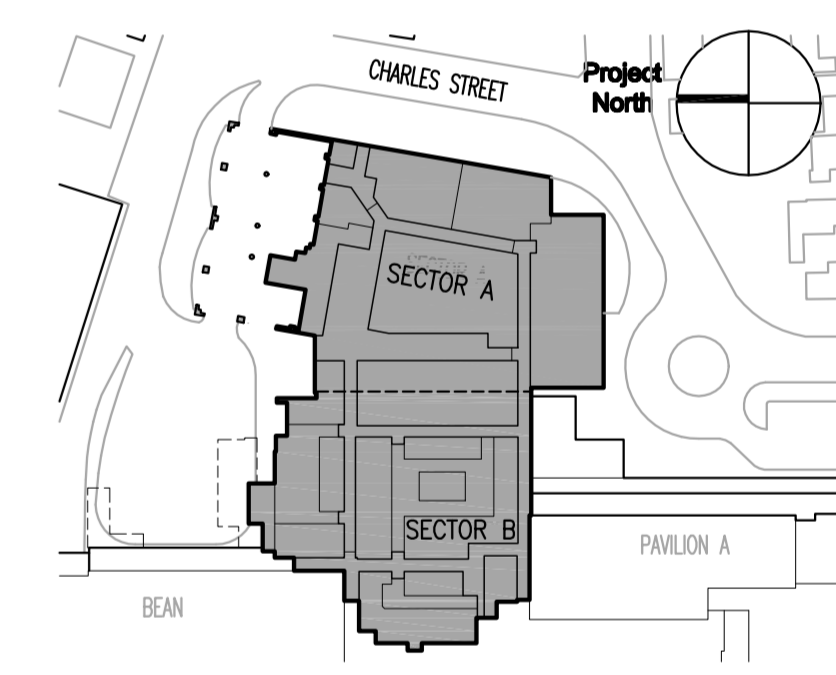


E2 EAST ELEVATION
SCALE: 1/8" = 1'-0"



E4 NORTH ELEVATION
SCALE: 1/8" = 1'-0"

MARK	ISSUE DATE	DESCRIPTION
BID	12/14/07	BID SET
Issue Log		



TRO Jung|Brannen
ARCHITECTURE INTERIOR DESIGN ENGINEERING MASTER PLANNING
22 Boston Wharf Road, Boston, Massachusetts 02210
Tel 617.502.8400 Fax 617.502.3402 www.trojungbrannen.com

Maine Medical Center
ED Expansion and Renovation
Portland, Maine MMC Project No. 21843
Drawing Title
EXTERIOR ELEVATIONS

Drawn By	JDB	Commission No.	4696
Approved By		Date Issued	12/14/07

Phase / Package Number Sheet Number
A400