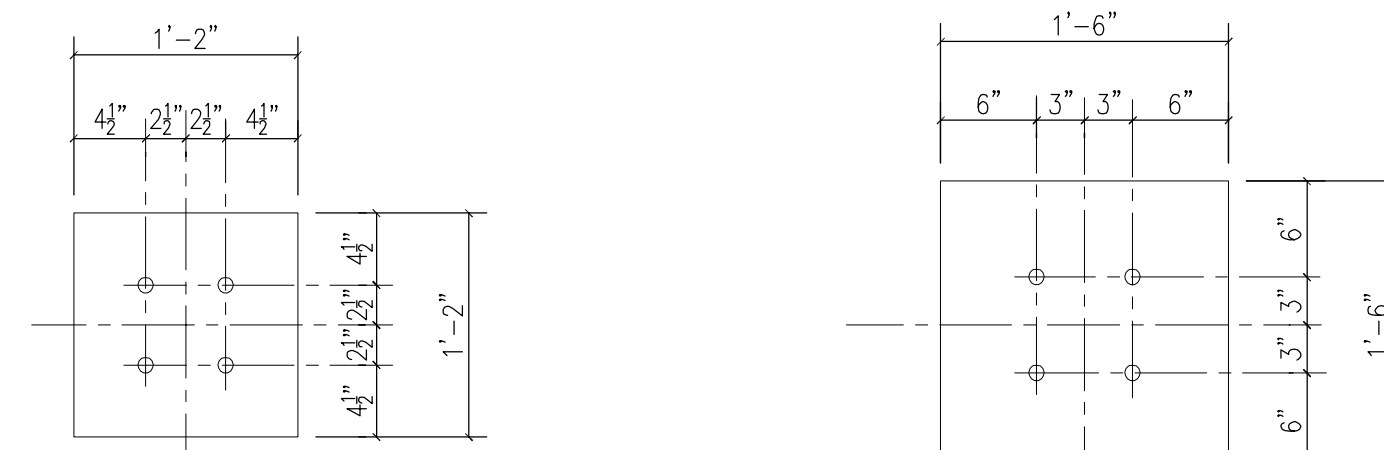


COLUMN SCHEDULE

LEVEL	EAST CONNECTOR														WEST CONNECTOR							NORTH CONNECTOR						HELIPAD FRAMING														
	07-11.2	07-8.1	07-8.2	07-8.6	06-8.1	06-8.2	06-8.8	06-9.8	06-11	06-13.5	06-13.5	06-13.5	06-13.5	06-13.5	06-13.5	F-9	F-10	F-11	E6-8	F-2&3	A-8.3	A-8.2	B-8.2	C-8.2	D-8.2	D-6&8.2	D-6-11.2	B-7	B-8	B-9	B-10	B-11	B-12	B-12.8	B-15.2	C-7	C-8	C-9	C-10	C-11	C-12	C-13
ASSUMED FUTURE SERVICE LOADS															DL=68k LL=60k							DL=56k LL=50k																				
ROOF ELEV. 157'-10"															W10x39							W10x45						W12x45														
2ND LEVEL ELEV. 145'-10" (GROUND FLR)															W10x39							W10x45						W12x45														
ED ROOF ELEV. 143'-8"															W10x39							W10x45						W12x45														
1ST LEVEL ELEV. 130'-2"															W10x39							W10x45						W12x45														
BOTTOM OF BASE PLATE ELEVATION * DENOTES TOP OF PLATE ELEV.	145'-9 1/4"														145'-9 1/4"							145'-9 1/4"						158.25														
BASE PLATE SIZE	C														B							G						14"x14"														
PLATE THICKNESS	1"														1"							1"						3/4"														

NOTES:

- THIS COLUMN SCHEDULE DOES NOT INCLUDE ANY VERTICAL MEMBERS OR COLUMNS ASSOCIATED WITH THE PEDESTRIAN BRIDGE (SEE ELEV. ON SHEET S335).
- CONTRACTOR TO VERIFY ELEVATIONS IN FIELD.
- F = FUTURE FRAMING.
- SHIM PACK (SEE DETAIL 4/S331).
- EXISTING CONCRETE GRADE BEAM (SEE DETAIL 3/S331).
- CONNECTION WITH ED ROOF (SEE DETAIL 1/S331).
- CONCRETE PLASTER 129'-9" (SEE DETAILS 6 & 7/S330).
- NOT USED.
- NEW CONCRETE GRADE BEAM. SEE DETAIL S10 & 11/S430 @ D-8.2 & 1/S431 @ D.6-8.2.
- CONTRACTOR SHALL BE RESPONSIBLE FOR COORDINATING FINAL T.O.S. ELEVATIONS WITH HELIPAD MANUFACTURER TO ENSURE FINAL HELIPAD ELEVATION IS 173'-11 1/4" AT GRID LINE 7 (HIGH POINT) WHERE HELIPAD ABUTS LINK BRIDGE.
- SEE DETAIL 4/S320 FOR BASE PLATE DETAILS.

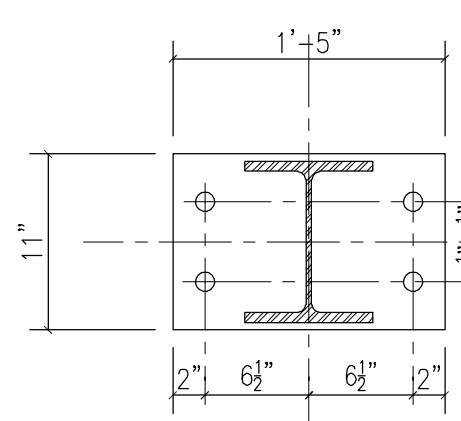


NOTES:

- (E) ANCHOR BOLT HOLES ARE 1".
- SEE DETAIL 4/S330 FOR CONNECTION OF NEW COLUMN TO (E) CAP PLATE, TYP.

TYPE A

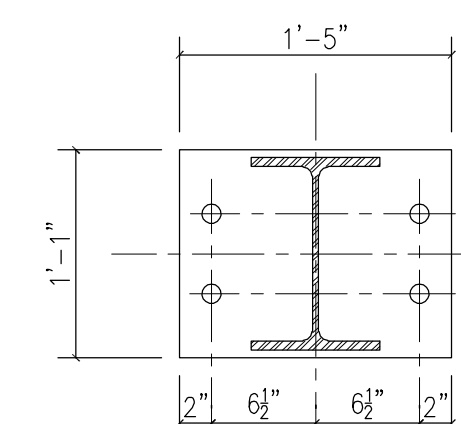
(E) CAP PLATE @ EMERGENCY DEPT.



NOTES:

- SEE TS-3/S102 FOR WIDENING OF EXISTING BEAM TOP FLANGE, AS REQ'D.

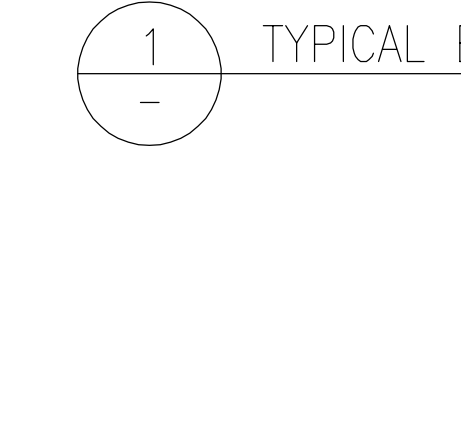
TYPE C



NOTES:

- SEE TS-3/S102 FOR WIDENING OF EXISTING BEAM TOP FLANGE, AS REQ'D.

TYPE F

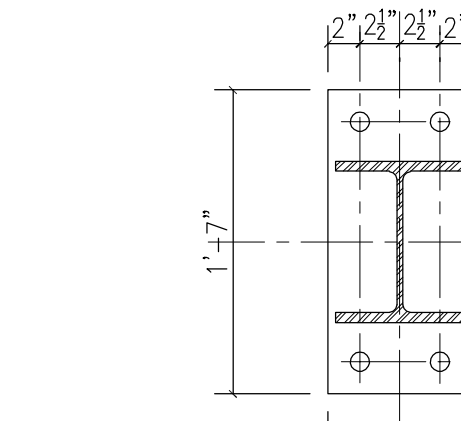


NOTES:

- (E) ANCHOR BOLT HOLES ARE 1".
- SEE DETAIL 4/S330 FOR CONNECTION OF NEW COLUMN TO (E) CAP PLATE, TYP.

TYPE B

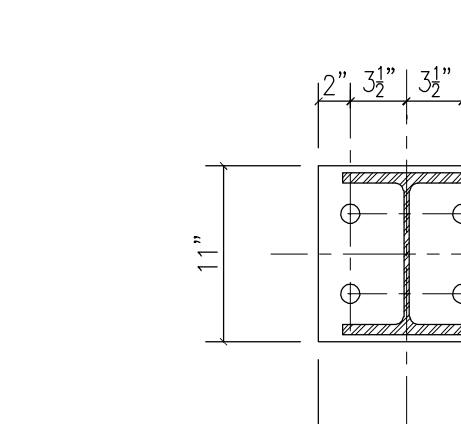
(E) CAP PLATE @ BEAN BUILDING



NOTES:

- SEE TS-3/S102 FOR WIDENING OF EXISTING BEAM TOP FLANGE, AS REQ'D.

TYPE D

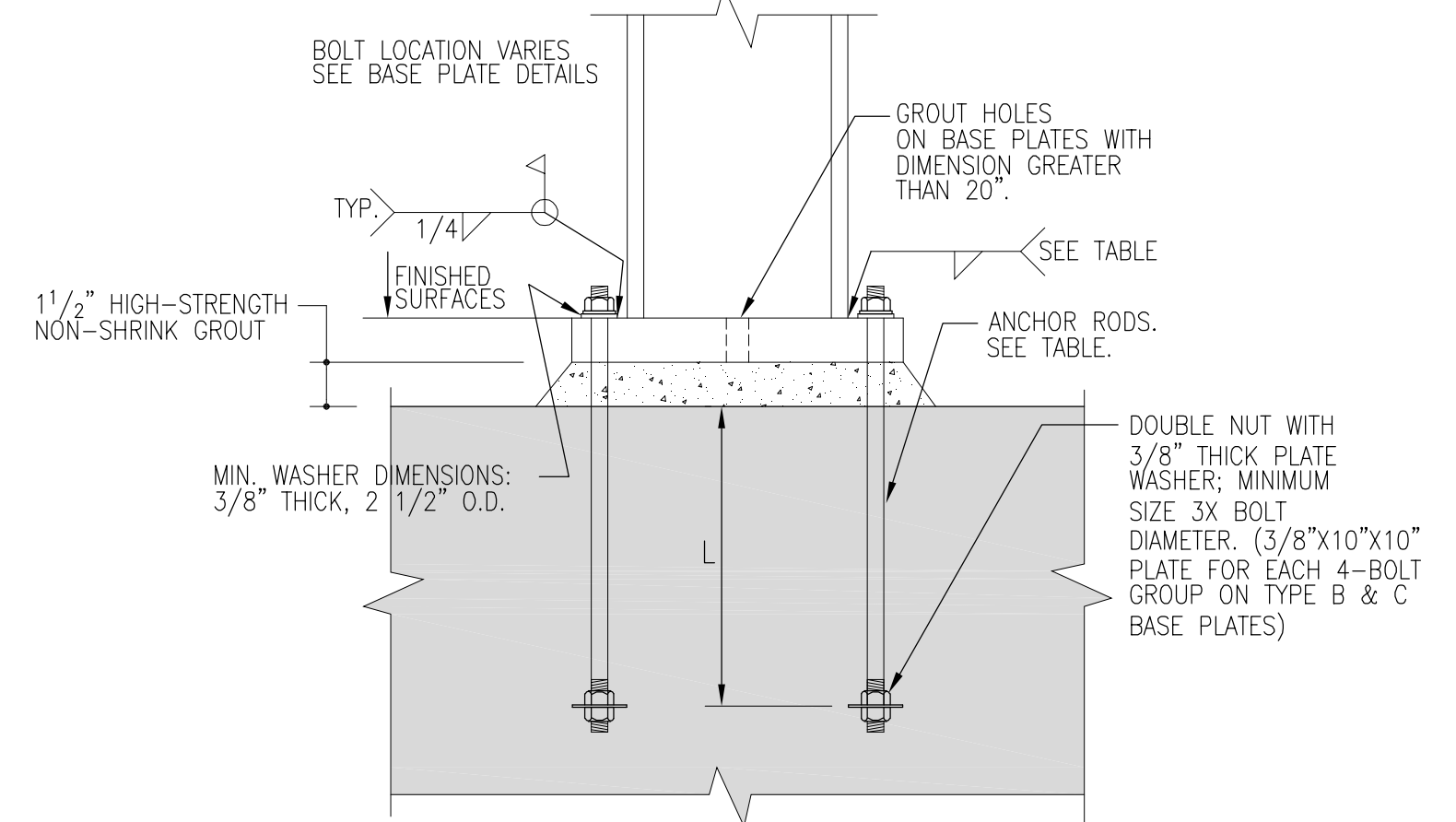


NOTES:

- ALL ANCHOR BOLT HOLES 1/2" OVERSIZE (1 5/16")

TYPE G

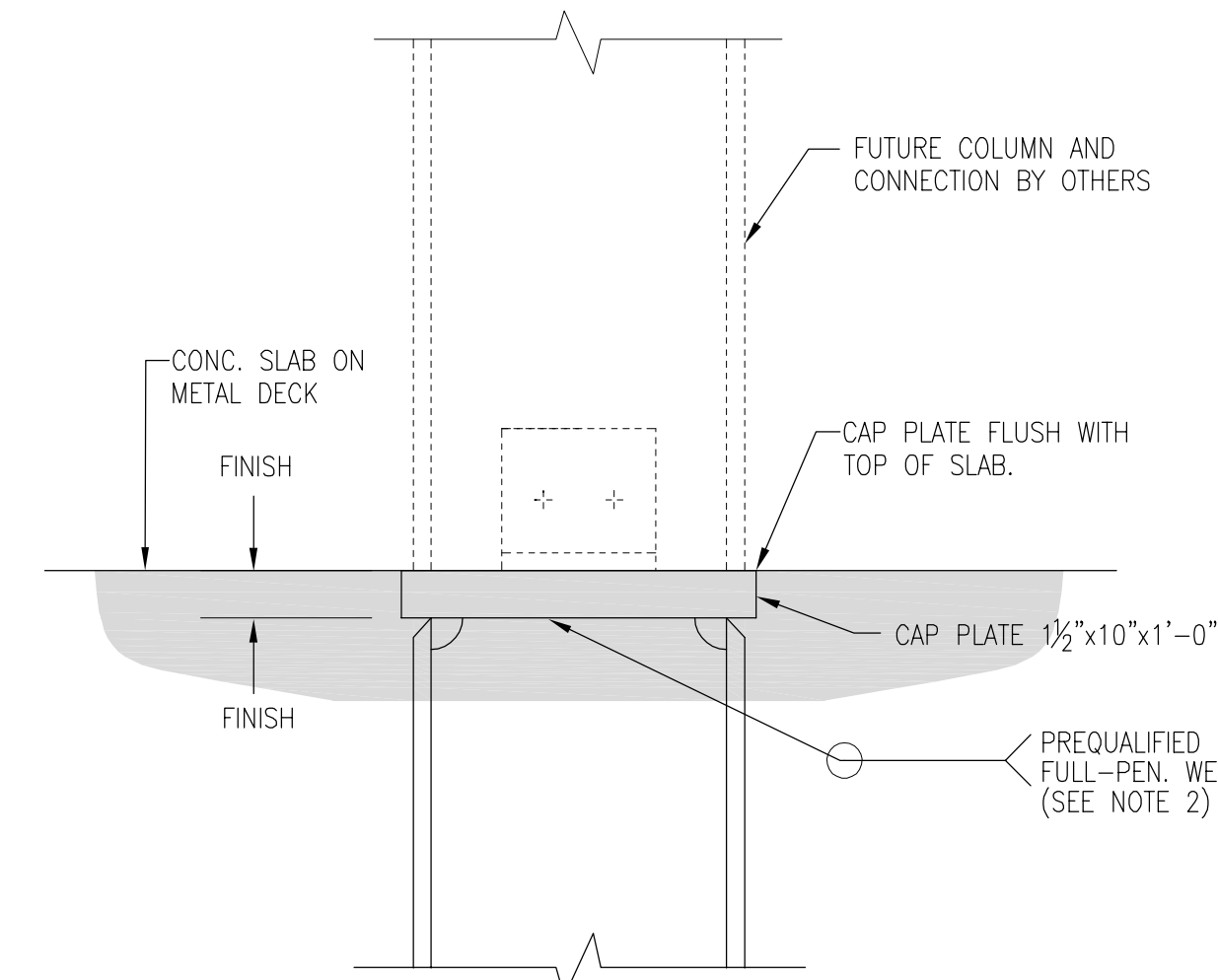
TYPE	ANCHOR ROD DIAMETER	ROD MATERIAL	NUT MATERIAL	WELD	GROUT	NOTES
TYPICAL UNON	1"	A307	A563 GRADE A	1/4" FULL PEN. WELD	1 1/2"	-



NOTES:

- PROVIDE LEVELING NUTS AND SHIM PACKS AS REQUIRED TO MAINTAIN COLUMN LEVELNESS.
- WASHER PLATES ASTM A36

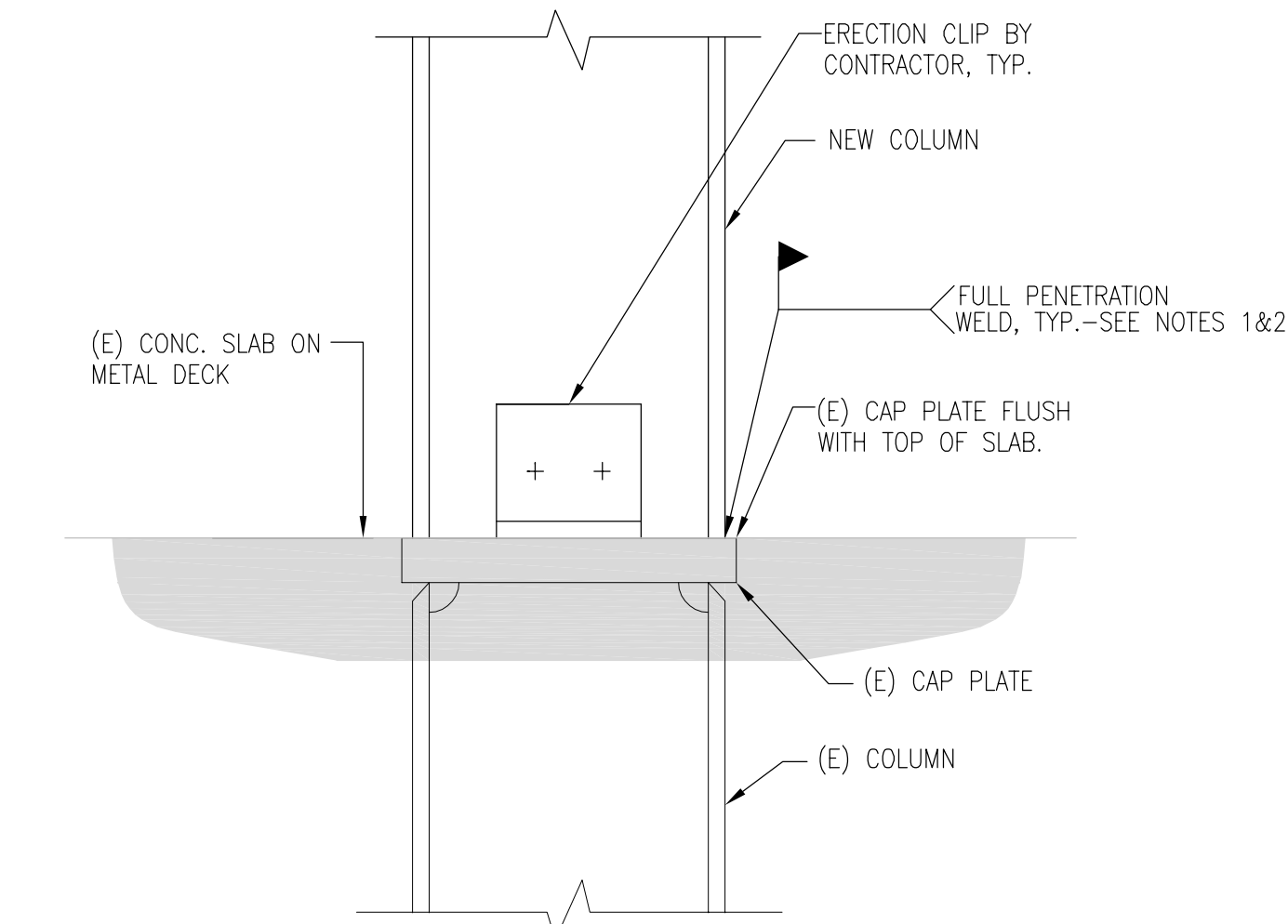
2 COLUMN BASE AND ANCHOR ROD DETAILS N.T.S.



NOTES:

- CAP PLATE MATERIAL TO BE A572 GR. 50
- FOR W10 GRAVITY COLUMNS, THE FULL-PEN WELD CAN BE SUBSTITUTED BY 1/4" FILLET WELD, ALL-AROUND (WITHOUT BACKGUDGE).

3 TYPICAL COLUMN TERMINATION AT ROOF LEVEL N.T.S.



NOTES:

- FOR W10 & W12 GRAVITY COLUMNS, THE FULL PENETRATION WELD CAN BE SUBSTITUTED BY 3/4" FILLET WELD ALL AROUND.
- FOR W14 GRAVITY COLUMNS, THE FULL PENETRATION WELD CAN BE SUBSTITUTED BY 3/8" FILLET WELD ALL AROUND.

4 TYPICAL COLUMN EXTENSION WHERE BASE PLATE IS PROVIDED N.T.S.

General Notes:



Simpson Gumpertz & Heger Inc.

Consulting Engineers

Boston, MA 41 Bayon Street, Suite 500
Telephone: (781) 907 9000
Facsimile: (781) 907 9009

San Francisco, CA The Landmark at One Market, Suite 600
Telephone: (415) 498 3700
Facsimile: (415) 498 3550

Washington, DC 1885 Ploard Drive, Suite 225
Telephone: (301) 417 0999
Facsimile: (301) 417 9825

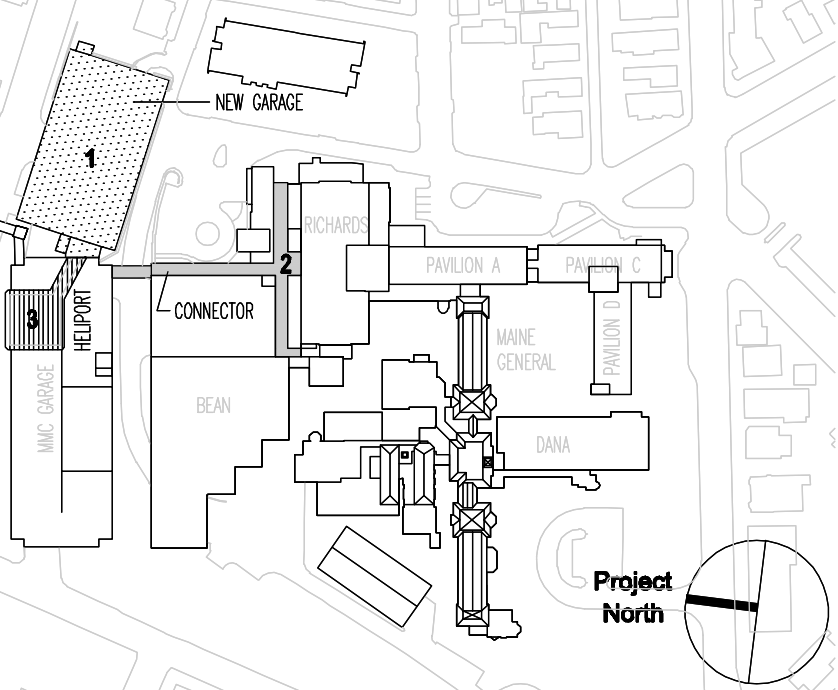
MARK ISSUE DATE DESCRIPTION

PERMIT 09/16/04 PERMIT SET

BID 08/26/04 BID SET

ISSUE LOG

MARK	ISSUE DATE	DESCRIPTION



TRO
ARCHITECTURAL PLANNING
ENGINEERING
INTERIOR DESIGN
The Ritchie Organization
80 Bridge Street
Newton, MA 02458-1154
617-869-9400

Maine Medical Center
Pkg F - Garage / Vault / Conn / Helipad
Portland, ME MMC Project No. 21845

Drawing Title:
LOBBY AND HELIPAD COLUMN SCHEDULE AND TYPICAL DETAILS

Commission No. 4678 Date Issued 08/26/04
Scale 1/16"=1'-0" Sheet Number **PKG-F S530**
Drawn By SWW
Approved By JHT/JJZ
Discipline S330
Copyright © 2004 The Ritchie Organization