

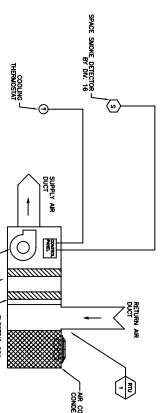
SEQUENCE OF OPERATION - ELEVATOR VENT DAMPER

ELEVATOR MACHINE ROOM (EMR) SHALL BE EQUIPPED WITH A ROOM THERMOSTAT (RT) WHICH WILL PROVIDE SIGNAL TO ROOM THERMOSTAT (RT) WHICH WILL PROVIDE SIGNAL TO ELEVATOR VENT DAMPER (ED) WHICH SHALL BE CONTROLLED BY EMR. THE ELEVATOR VENT DAMPER (ED) SHALL BE CONTROLLED BY EMR. THE ELEVATOR VENT DAMPER (ED) SHALL BE CONTROLLED BY EMR.

INPUT/OUTPUT SUMMARY TABLE - ELEVATOR VENT DAMPERS

NO.	NAME	TYPE	LOCATION	STATUS
1	ROOM THERMOSTAT	RT	ROOM	CONTROL
2	ELEVATOR VENT DAMPER	ED	ELEVATOR	CONTROL
3	RELAY	R	ELEVATOR	CONTROL
4	RELAY	R	ELEVATOR	CONTROL
5	RELAY	R	ELEVATOR	CONTROL
6	RELAY	R	ELEVATOR	CONTROL
7	RELAY	R	ELEVATOR	CONTROL
8	RELAY	R	ELEVATOR	CONTROL
9	RELAY	R	ELEVATOR	CONTROL
10	RELAY	R	ELEVATOR	CONTROL
11	RELAY	R	ELEVATOR	CONTROL
12	RELAY	R	ELEVATOR	CONTROL
13	RELAY	R	ELEVATOR	CONTROL
14	RELAY	R	ELEVATOR	CONTROL
15	RELAY	R	ELEVATOR	CONTROL
16	RELAY	R	ELEVATOR	CONTROL
17	RELAY	R	ELEVATOR	CONTROL
18	RELAY	R	ELEVATOR	CONTROL
19	RELAY	R	ELEVATOR	CONTROL
20	RELAY	R	ELEVATOR	CONTROL
21	RELAY	R	ELEVATOR	CONTROL
22	RELAY	R	ELEVATOR	CONTROL
23	RELAY	R	ELEVATOR	CONTROL
24	RELAY	R	ELEVATOR	CONTROL
25	RELAY	R	ELEVATOR	CONTROL
26	RELAY	R	ELEVATOR	CONTROL
27	RELAY	R	ELEVATOR	CONTROL
28	RELAY	R	ELEVATOR	CONTROL
29	RELAY	R	ELEVATOR	CONTROL
30	RELAY	R	ELEVATOR	CONTROL
31	RELAY	R	ELEVATOR	CONTROL
32	RELAY	R	ELEVATOR	CONTROL
33	RELAY	R	ELEVATOR	CONTROL
34	RELAY	R	ELEVATOR	CONTROL
35	RELAY	R	ELEVATOR	CONTROL
36	RELAY	R	ELEVATOR	CONTROL
37	RELAY	R	ELEVATOR	CONTROL
38	RELAY	R	ELEVATOR	CONTROL
39	RELAY	R	ELEVATOR	CONTROL
40	RELAY	R	ELEVATOR	CONTROL
41	RELAY	R	ELEVATOR	CONTROL
42	RELAY	R	ELEVATOR	CONTROL
43	RELAY	R	ELEVATOR	CONTROL
44	RELAY	R	ELEVATOR	CONTROL
45	RELAY	R	ELEVATOR	CONTROL
46	RELAY	R	ELEVATOR	CONTROL
47	RELAY	R	ELEVATOR	CONTROL
48	RELAY	R	ELEVATOR	CONTROL
49	RELAY	R	ELEVATOR	CONTROL
50	RELAY	R	ELEVATOR	CONTROL

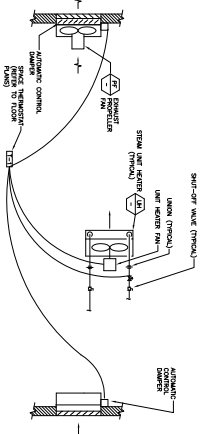
ELEVATOR VENT DAMPER CONTROL SCHEMATIC



SEQUENCE OF OPERATION ROOFTOP AIR UNIT

EMR THERMOSTAT (RT) PROVIDES SIGNAL TO ROOFTOP AIR UNIT (RAU) WHICH SHALL BE CONTROLLED BY EMR. THE ROOFTOP AIR UNIT (RAU) SHALL BE CONTROLLED BY EMR. THE ROOFTOP AIR UNIT (RAU) SHALL BE CONTROLLED BY EMR.

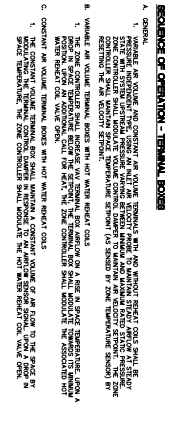
ELEVATOR MACHINE ROOM ROOFTOP AIR CONDITIONING UNIT



SEQUENCE OF OPERATION - MECHANICAL ROOM HEATING AND VENTILATION

HELPPORT MECHANICAL ROOM THERMOSTAT (RT) PROVIDES SIGNAL TO FAN (FAN) WHICH SHALL BE CONTROLLED BY RT. THE FAN (FAN) SHALL BE CONTROLLED BY RT. THE FAN (FAN) SHALL BE CONTROLLED BY RT.

HELPPORT MECHANICAL RM HEATING AND VENTILATION CONTROL SCHEMATIC



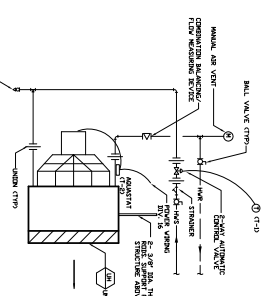
SEQUENCE OF OPERATION - TERMINAL BOXES

1. GENERAL
 A. VAV & CV TERMINAL BOXES SHALL BE EQUIPPED WITH A ROOM THERMOSTAT (RT) WHICH SHALL BE CONTROLLED BY EMR. THE VAV & CV TERMINAL BOXES SHALL BE CONTROLLED BY EMR. THE VAV & CV TERMINAL BOXES SHALL BE CONTROLLED BY EMR.
 B. VAV & CV TERMINAL BOXES SHALL BE EQUIPPED WITH A ROOM THERMOSTAT (RT) WHICH SHALL BE CONTROLLED BY EMR. THE VAV & CV TERMINAL BOXES SHALL BE CONTROLLED BY EMR. THE VAV & CV TERMINAL BOXES SHALL BE CONTROLLED BY EMR.
 C. VAV & CV TERMINAL BOXES SHALL BE EQUIPPED WITH A ROOM THERMOSTAT (RT) WHICH SHALL BE CONTROLLED BY EMR. THE VAV & CV TERMINAL BOXES SHALL BE CONTROLLED BY EMR. THE VAV & CV TERMINAL BOXES SHALL BE CONTROLLED BY EMR.

INPUT/OUTPUT SUMMARY TABLE - TERMINAL BOXES

NO.	NAME	TYPE	LOCATION	STATUS
1	ROOM THERMOSTAT	RT	ROOM	CONTROL
2	VAV TERMINAL BOX	VAV	ROOM	CONTROL
3	CV TERMINAL BOX	CV	ROOM	CONTROL
4	RELAY	R	ROOM	CONTROL
5	RELAY	R	ROOM	CONTROL
6	RELAY	R	ROOM	CONTROL
7	RELAY	R	ROOM	CONTROL
8	RELAY	R	ROOM	CONTROL
9	RELAY	R	ROOM	CONTROL
10	RELAY	R	ROOM	CONTROL
11	RELAY	R	ROOM	CONTROL
12	RELAY	R	ROOM	CONTROL
13	RELAY	R	ROOM	CONTROL
14	RELAY	R	ROOM	CONTROL
15	RELAY	R	ROOM	CONTROL
16	RELAY	R	ROOM	CONTROL
17	RELAY	R	ROOM	CONTROL
18	RELAY	R	ROOM	CONTROL
19	RELAY	R	ROOM	CONTROL
20	RELAY	R	ROOM	CONTROL
21	RELAY	R	ROOM	CONTROL
22	RELAY	R	ROOM	CONTROL
23	RELAY	R	ROOM	CONTROL
24	RELAY	R	ROOM	CONTROL
25	RELAY	R	ROOM	CONTROL
26	RELAY	R	ROOM	CONTROL
27	RELAY	R	ROOM	CONTROL
28	RELAY	R	ROOM	CONTROL
29	RELAY	R	ROOM	CONTROL
30	RELAY	R	ROOM	CONTROL
31	RELAY	R	ROOM	CONTROL
32	RELAY	R	ROOM	CONTROL
33	RELAY	R	ROOM	CONTROL
34	RELAY	R	ROOM	CONTROL
35	RELAY	R	ROOM	CONTROL
36	RELAY	R	ROOM	CONTROL
37	RELAY	R	ROOM	CONTROL
38	RELAY	R	ROOM	CONTROL
39	RELAY	R	ROOM	CONTROL
40	RELAY	R	ROOM	CONTROL
41	RELAY	R	ROOM	CONTROL
42	RELAY	R	ROOM	CONTROL
43	RELAY	R	ROOM	CONTROL
44	RELAY	R	ROOM	CONTROL
45	RELAY	R	ROOM	CONTROL
46	RELAY	R	ROOM	CONTROL
47	RELAY	R	ROOM	CONTROL
48	RELAY	R	ROOM	CONTROL
49	RELAY	R	ROOM	CONTROL
50	RELAY	R	ROOM	CONTROL

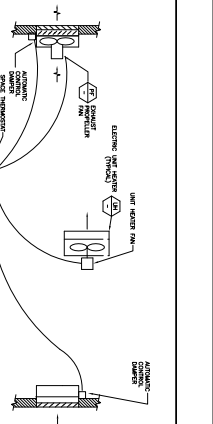
TERMINAL BOX SEQUENCE AND CONTROL SCHEMATIC



SEQUENCE OF OPERATION HOT WATER UNIT HEATER

1. GENERAL
 A. HOT WATER UNIT HEATER SHALL BE EQUIPPED WITH A ROOM THERMOSTAT (RT) WHICH SHALL BE CONTROLLED BY EMR. THE HOT WATER UNIT HEATER SHALL BE CONTROLLED BY EMR. THE HOT WATER UNIT HEATER SHALL BE CONTROLLED BY EMR.
 B. HOT WATER UNIT HEATER SHALL BE EQUIPPED WITH A ROOM THERMOSTAT (RT) WHICH SHALL BE CONTROLLED BY EMR. THE HOT WATER UNIT HEATER SHALL BE CONTROLLED BY EMR. THE HOT WATER UNIT HEATER SHALL BE CONTROLLED BY EMR.
 C. HOT WATER UNIT HEATER SHALL BE EQUIPPED WITH A ROOM THERMOSTAT (RT) WHICH SHALL BE CONTROLLED BY EMR. THE HOT WATER UNIT HEATER SHALL BE CONTROLLED BY EMR. THE HOT WATER UNIT HEATER SHALL BE CONTROLLED BY EMR.

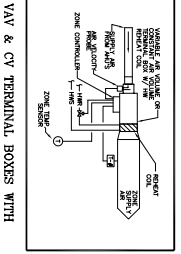
HOT WATER UNIT HEATER CONTROL SCHEMATIC



SEQUENCE OF OPERATION - ELECTRICAL ROOM HEATING AND VENTILATION

ELECTRICAL ROOM THERMOSTAT (RT) PROVIDES SIGNAL TO FAN (FAN) WHICH SHALL BE CONTROLLED BY RT. THE FAN (FAN) SHALL BE CONTROLLED BY RT. THE FAN (FAN) SHALL BE CONTROLLED BY RT.

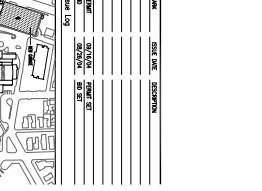
ELECTRICAL RM HEATING AND VENTILATION CONTROL SCHEMATIC



SEQUENCE OF OPERATION - VAV & CV TERMINAL BOXES WITH HOT WATER REHEAT COILS

1. GENERAL
 A. VAV & CV TERMINAL BOXES SHALL BE EQUIPPED WITH A ROOM THERMOSTAT (RT) WHICH SHALL BE CONTROLLED BY EMR. THE VAV & CV TERMINAL BOXES SHALL BE CONTROLLED BY EMR. THE VAV & CV TERMINAL BOXES SHALL BE CONTROLLED BY EMR.
 B. VAV & CV TERMINAL BOXES SHALL BE EQUIPPED WITH A ROOM THERMOSTAT (RT) WHICH SHALL BE CONTROLLED BY EMR. THE VAV & CV TERMINAL BOXES SHALL BE CONTROLLED BY EMR. THE VAV & CV TERMINAL BOXES SHALL BE CONTROLLED BY EMR.
 C. VAV & CV TERMINAL BOXES SHALL BE EQUIPPED WITH A ROOM THERMOSTAT (RT) WHICH SHALL BE CONTROLLED BY EMR. THE VAV & CV TERMINAL BOXES SHALL BE CONTROLLED BY EMR. THE VAV & CV TERMINAL BOXES SHALL BE CONTROLLED BY EMR.

TERMINAL BOX SEQUENCE AND CONTROL SCHEMATIC



Maine Medical Center
 Pkg 7 - Change Ventil Comp Helpport
 Portland, ME
 MAC Project No. 2185

HVAC SCHEMATICS AND SEQUENCE OF OPERATION
 H502

REVISIONS

NO.	DATE	DESCRIPTION
1		
2		
3		
4		
5		

PROJECT INFORMATION

NO.	DATE	DESCRIPTION
1		
2		
3		
4		
5		