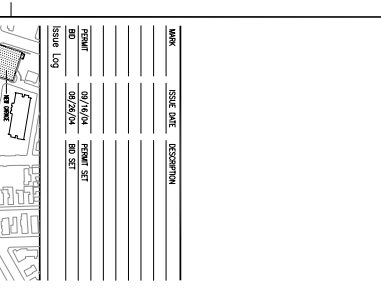
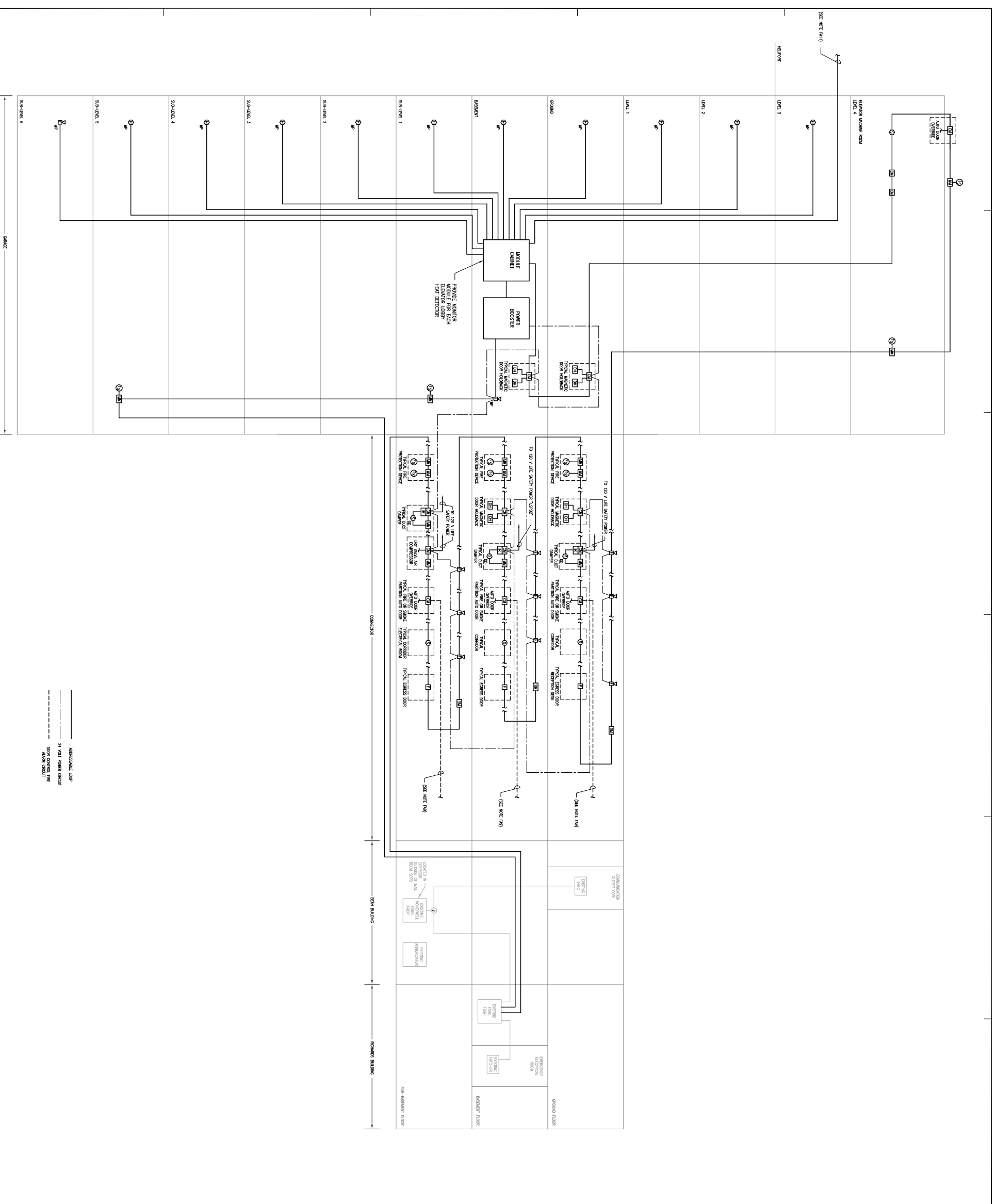


- GENERAL NOTES:**
- NA1. ALL ELECTRICAL DRAWINGS THE EXACT QUANTITY OF FIRE ALARM BELL COILS.
 - NA2. WIRING AND EQUIPMENT SHALL BE AS REQUIRED BY THE MANUFACTURER'S WIRING DIAGRAMS.
 - NA3. ALL FIRE ALARM BIRING SHALL BE RAN IN CONDUIT.
 - NA4. THE ALARM BIRING SHALL BEET DURING FACILITY FIRE ALARM.
 - NA5. CONDUITS SHALL BE INSTALLED AND COVERED FIRE ALARM SYSTEM UPON COMPLETION OF NON-INTERFERING WORK AS REQUIRED.
 - NA6. THE ALARM SYSTEM WIRING SHALL BE CLASS A.
 - NA7. ELECTRICAL CONDUITS SHALL PROVIDE ALL NECESSARY PROTECTION AND SUPPORT FOR A COMPLETE AND OPERATIONAL FIRE ALARM SYSTEM.
 - NA8. BLOCKS SPACES ARE NOT ALLOWED.
 - NA9. THE TO EXISTING THE ALARM SYSTEM DOOR CONTROL CIRCUIT.
 - NA10. REFER TO NA10 CHANGES FOR RETURN DOOR SHUT DETECTOR LOCATIONS INDICATED BY ANNOTATION PROVIDING DOOR SHUT DETECTOR LOCATIONS INDICATED ON ELECTRICAL DRAWINGS AT ALL LOCATIONS INDICATED ON ELECTRICAL DRAWINGS.
 - NA11. THE TO EXISTING FIRE SUPPRESSION SYSTEM PROVIDE MONITOR WIRING IN CABINET.



TRO
A ARCHITECTURE
PLANNING
INTERIOR DESIGN
The Maine Center
Maine, USA
1000-1000

Maine Medical Center
Pkg F - Garage / Vault / Conn / Helipad
Portland, ME
MMC Project No. 21845

**ELECTRICAL
FIRE ALARM
RISER DIAGRAM**

Commission No. 4878
Scale No. 1/8"=1'-0"
Drawing No. 4878-01-01
Project No. 21845

PG&F
E604