

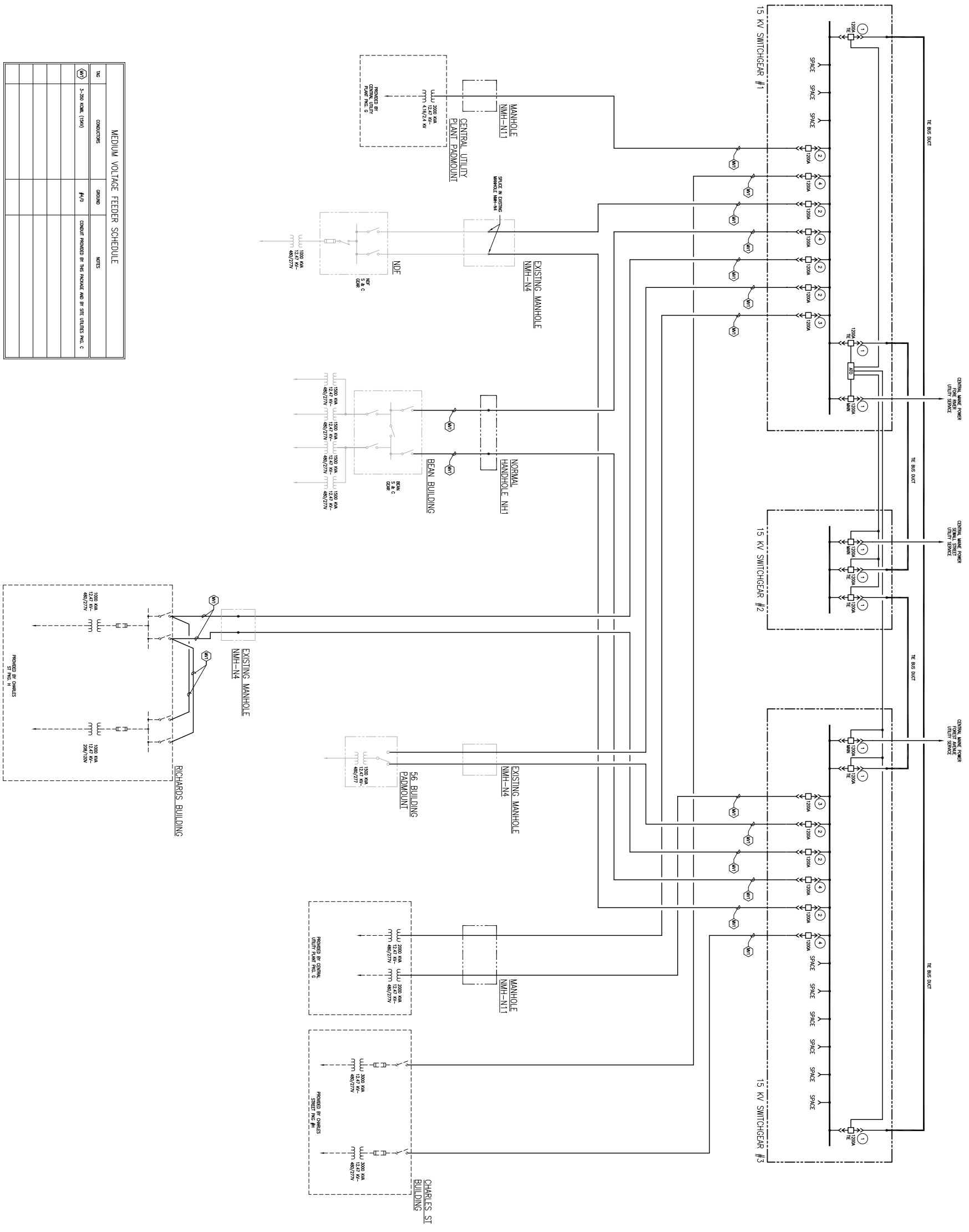
General Notes:

LEGEND:

- EXISTING EQUIPMENT TO REMAIN
- NEW EQUIPMENT
- EXISTING EQUIPMENT
- EXISTING ENCLOSURE

GENERAL NOTES:

1. REFER TO SHEET C FOR CONDUIT ROUTING AND REPAIRS.
2. REFER TO SHEET 1 ON SHEET DECK FOR RELAYING REPAIRS.
3. REFER TO SHEET 2 ON SHEET DECK FOR RELAYING REPAIRS.
4. REFER TO SHEET 3 ON SHEET DECK FOR RELAYING REPAIRS.
5. REFER TO SHEET 4 ON SHEET DECK FOR RELAYING REPAIRS.



MEDIUM VOLTAGE FEEDER SCHEDULE

TAG	CONDUCTORS	GROUND	NOTES
40	3-350 NMWL (150V)	#4/0	CONDUIT PROVIDED BY THIS PROVIDER AND BY SET CLIENTS PWS-C

MARK	SIZE	DATE	DESCRIPTION
REVISION	04/14/24		REVISION SET
DESIGNED BY	08/26/24		REV SET
ISSUE LOG			



PRO
A CONSULTING ENGINEERS, INC.
SHOWING THE RICHARDS CENTER BUILDING TO BE DEMOLISHED

MAINE MEDICAL CENTER
Pkg F - Garage / Vault / Comm / Helipad
Portland, ME
MMC Project No. 21845

ELECTRICAL NORMAL POWER ONE LINE DIAGRAM
PROJECT NO. 21845
DATE: 08/26/24
DRAWN BY: [Name]
CHECKED BY: [Name]
DATE: 08/26/24
PROJECT NO. 21845