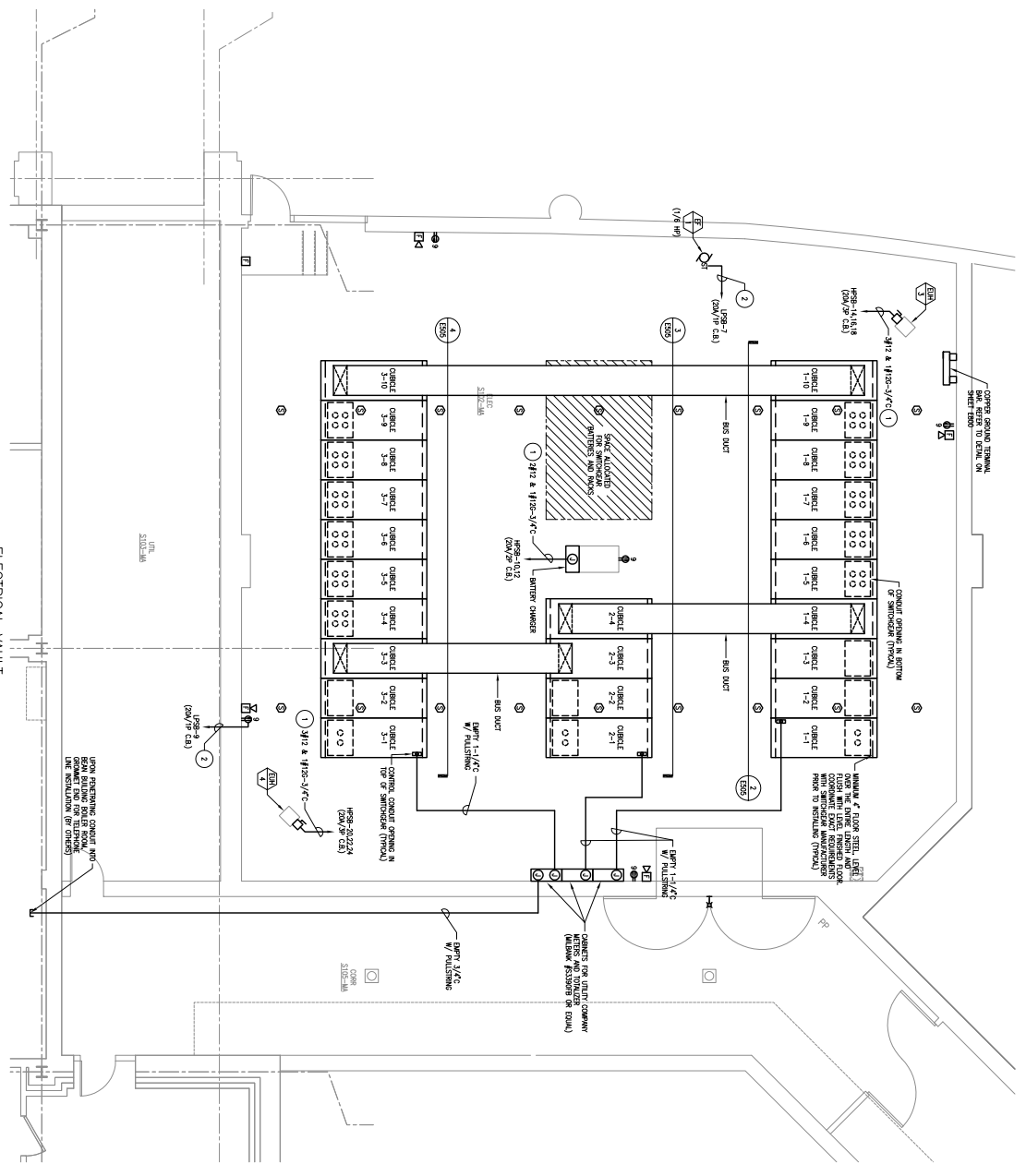
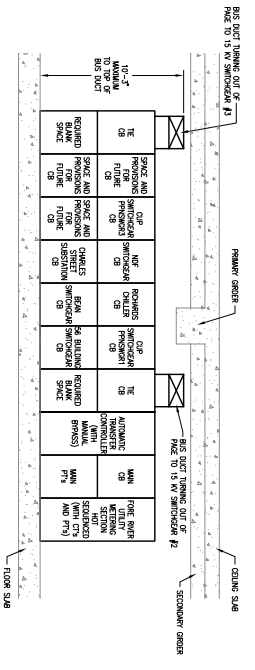


General Notes:

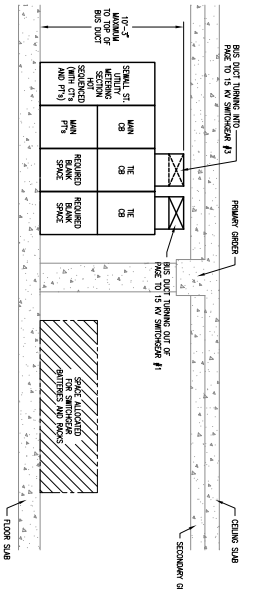
- 1 CONNECT TO NEW EXISTING SERVICES PLANNED AND INDICATED WITHIN EXISTING SHEET IN PANEL INDICATED.
- 2 CONNECT TO EXISTING SHEET BREAKER IN PANEL INDICATED.



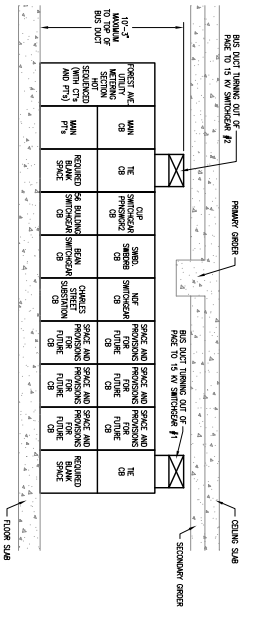
1 ELECTRICAL VAULT POWER & SIGNAL PART PLAN 1/4" = 1'-0"



2 15 KV SWITCHGEAR #1 ELEVATION NOT TO SCALE

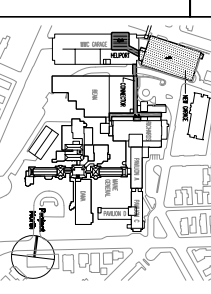


3 15 KV SWITCHGEAR #2 ELEVATION NOT TO SCALE



4 15 KV SWITCHGEAR #3 ELEVATION NOT TO SCALE

NO	ISSUE DATE	DESCRIPTION
01	01/15/14	ISSUE SET
02	08/26/14	REV SET



**PRO**  
ARCHITECTURE  
PLANNING  
& CONSULTING  
1177 South Congress  
Portland, ME 04106  
Tel: 603.766.1111  
Fax: 603.766.1112

**Maine Medical Center**  
Pkg F - Garage / Vault / Conn / Helipad  
Portland, ME  
MMC Project No. 21845

**PRO**  
ARCHITECTURE  
PLANNING  
& CONSULTING  
1177 South Congress  
Portland, ME 04106  
Tel: 603.766.1111  
Fax: 603.766.1112

Commission No. 4818  
Scale 1/4" = 1'-0"  
Drawing No. E506  
Project No. 21845