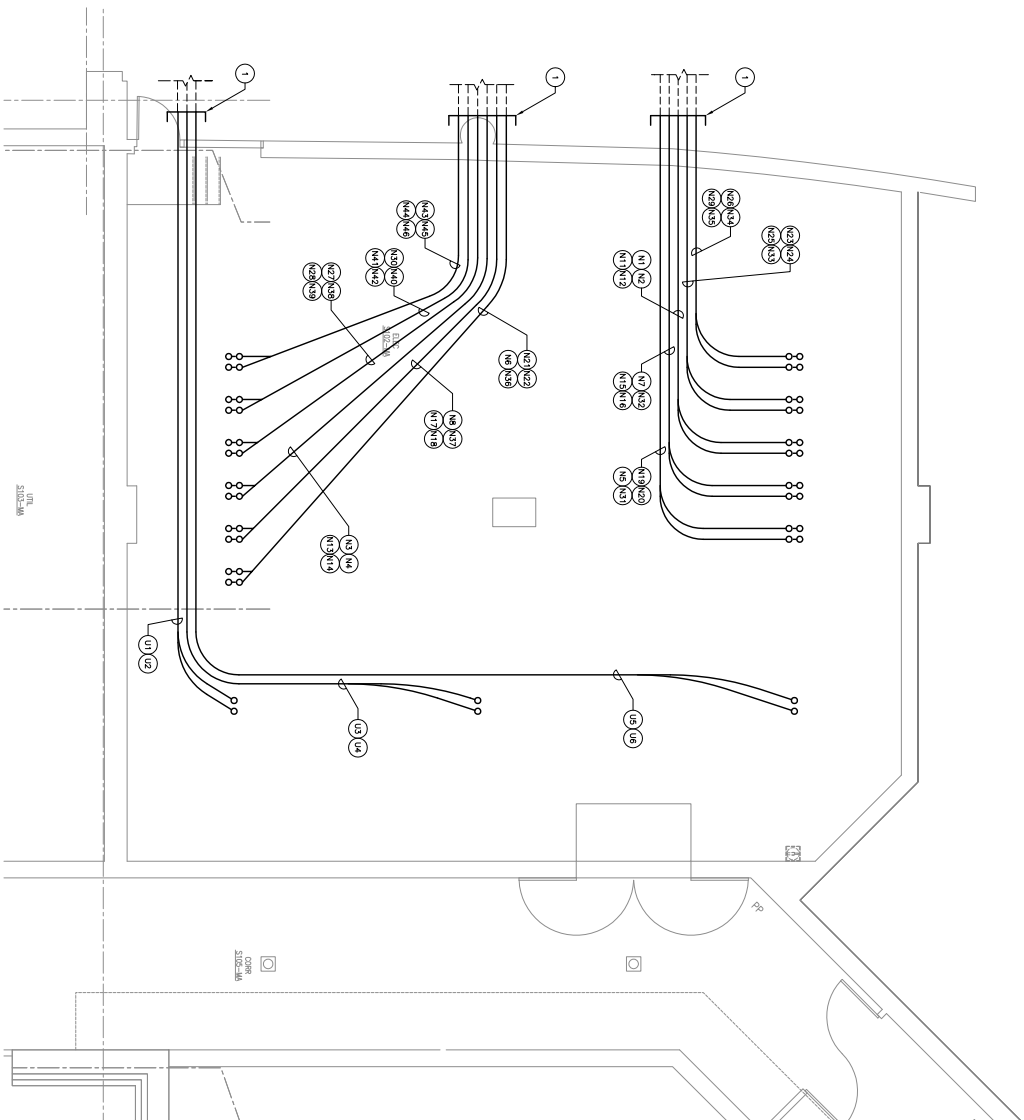
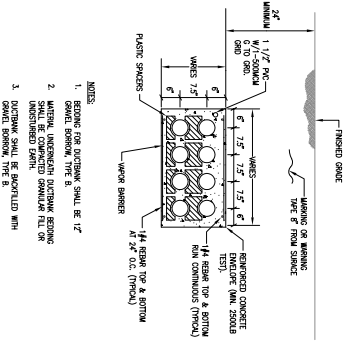


General Notes:
 GENERAL NOTES:
 1. REFER TO SHEET E500 FOR CONDUIT SCHEDULE.

DRAWING NOTES:
 1. UNLESS NOTED OTHERWISE, ALL DIMENSIONS SHOWN ON THIS DRAWING ARE IN FEET AND INCHES. DIMENSIONS ARE TO FACE UNLESS NOTED OTHERWISE.



1 ELECTRICAL VAULT
 UNDER-SLAB CONDUIT ROUTING PLAN
 1/4" = 1'-0"



- NOTES:
1. SEEING FOR DUCTBANK SHALL BE 12"
 2. SEEING FOR CONDUIT SHALL BE 12"
 3. SHALL BE CONCRETE OVERLAP 12" MIN
 4. CONCRETE SHALL BE CASTED WITH 1/4" REBAR TOP & BOTTOM
 5. CONCRETE SHALL BE 4" MIN

2 TYPICAL DUCTBANK SECTION
 EXACT CONDUIT QUANTITY AS INDICATED ON PLANS

DATE	DESCRIPTION
08/14/14	ISSUED SET
08/26/14	REV SET
08/26/14	REV SET
08/26/14	REV SET

MWK
 SCALE DATE DESCRIPTION
 08/14/14 ISSUED SET
 08/26/14 REV SET
 08/26/14 REV SET
 08/26/14 REV SET
 Scale Log

Key Plan

PRO
 ARCHITECTURE
 PLANNING
 SHOWROOM
 1477 Main Street
 Portland, ME 04103
 Tel: 603.733.1111
 Fax: 603.733.1112
 www.proarchitect.com

Maine Medical Center
 Pgs F - Garage / Vault / Comm / Helipad
 Portland, ME
 MMC Project No. 21845

PROJECT NO.
**ELECTRICAL VAULT
 UNDER-SLAB CONDUIT
 ROUTING PLAN**

0' 2' 4' 6' 8' 10'

0' 2' 4' 6' 8' 10'

Commission No. 4838
 Scale 1/4" = 1'-0"
 Date 08/14/14
 Drawn By EJA
 Checked By JLD
 Project No. 4838/2014/ME
 Project Name
 Scale Log

E505

08/26/14
PRO