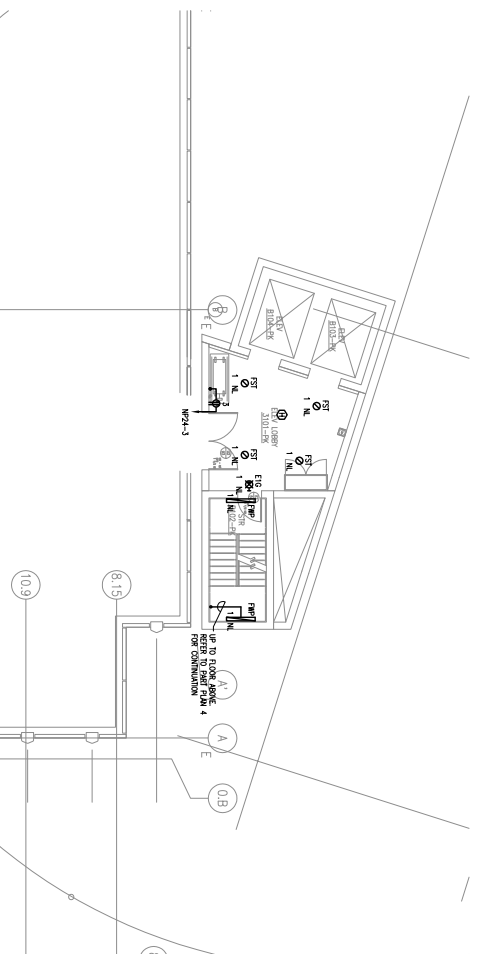


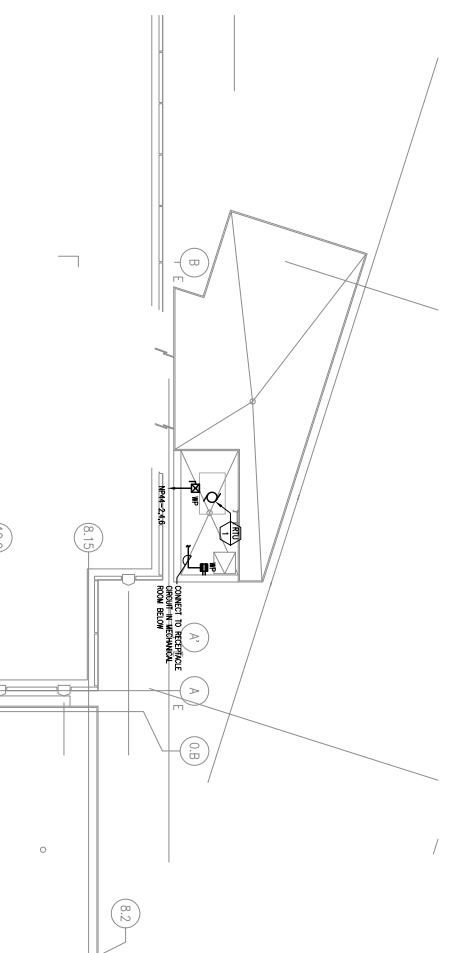
General Notes:

**DRAWING NOTES:**

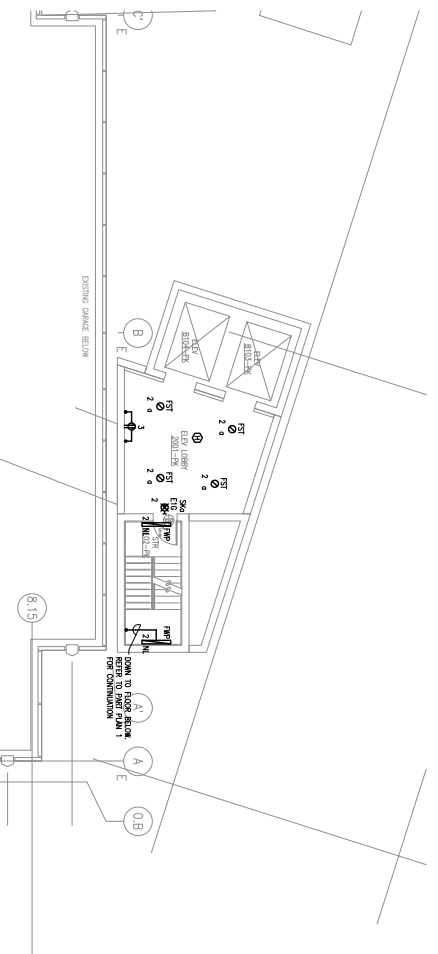
- ① ELEVATOR CONSULTS APPROVED BY OWNER. WIRE FOR APPROX. 14 FEET TO ELEVATOR. REFER DRAWING ON ONE FLOOR FOR DETAILS.
- ② REFER TO ELECTRICAL PART PLANS FOR ALL ELECTRICAL WORK.
- ③ APPROXIMATELY LOCATED. VERIFY LOCATION WITH THE ELECTRICAL CONSULTANT. ALL WORK SHALL BE DONE IN ACCORDANCE WITH THE NATIONAL ELECTRICAL CODE (NEC) AND ALL APPLICABLE LOCAL AND STATE REQUIREMENTS. ELEVATOR CONSULT SHALL VERIFY ALL WORK IS DONE IN ACCORDANCE WITH ALL APPLICABLE REQUIREMENTS.
- ④ ELEVATOR CONSULT FOR ELEVATOR FOR LIGHTS AND POWER.
- ⑤ ELEVATOR CONSULT FOR ELEVATOR FOR LIGHTS AND POWER.
- ⑥ ELEVATOR CONSULT FOR ELEVATOR FOR LIGHTS AND POWER.
- ⑦ ELEVATOR CONSULT FOR ELEVATOR FOR LIGHTS AND POWER.
- ⑧ ELEVATOR CONSULT FOR ELEVATOR FOR LIGHTS AND POWER.
- ⑨ ELEVATOR CONSULT FOR ELEVATOR FOR LIGHTS AND POWER.
- ⑩ ELEVATOR CONSULT FOR ELEVATOR FOR LIGHTS AND POWER.



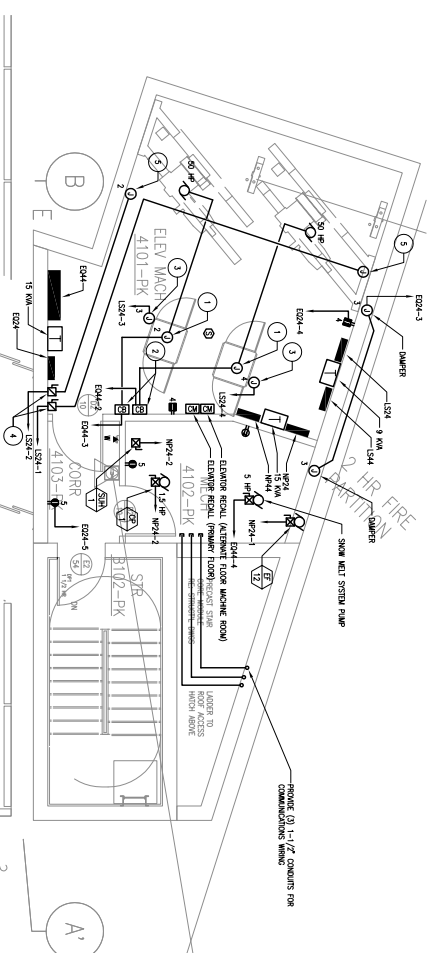
3 PART PLAN LEVEL-3  
LIGHTING POWER AND SIGNAL  
1/8" = 1'-0"



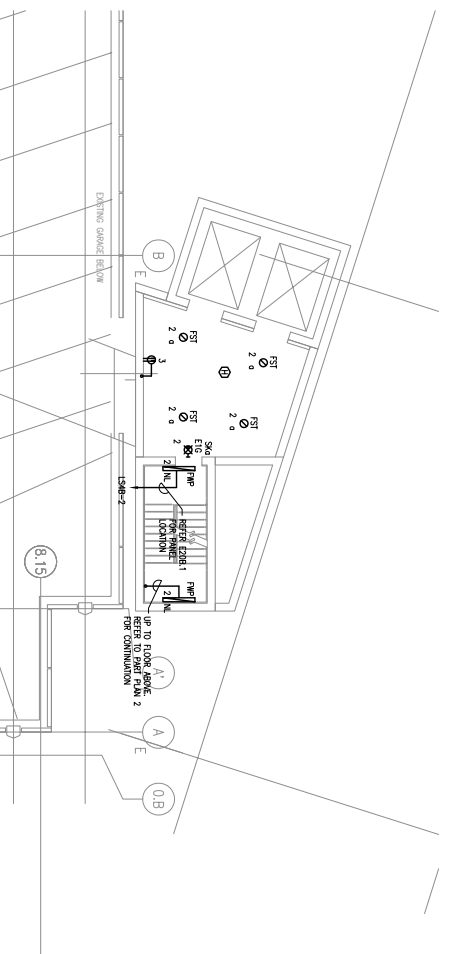
6 PART PLAN ROOF LEVEL  
LIGHTING POWER AND SIGNAL PLAN  
1/8" = 1'-0"



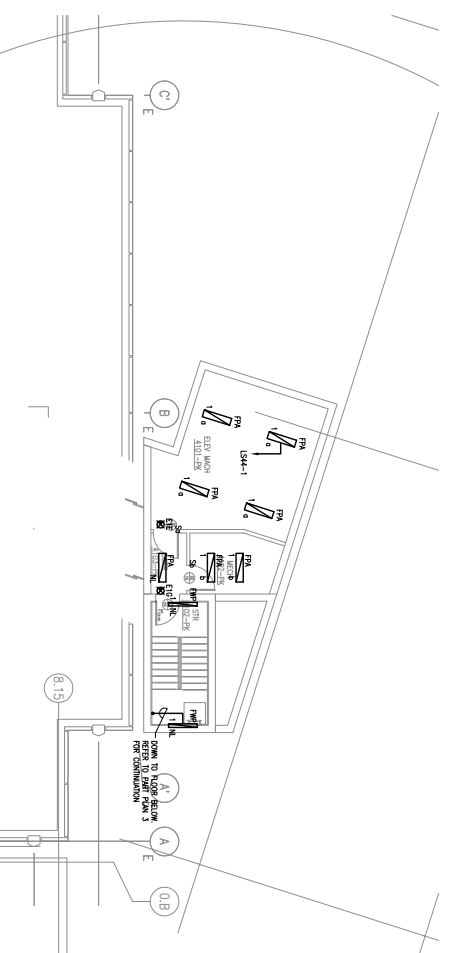
2 PART PLAN LEVEL-2  
LIGHTING POWER AND SIGNAL  
1/8" = 1'-0"



5 PART PLAN LEVEL-4  
POWER AND SIGNAL PLAN  
1/8" = 1'-0"



1 PART PLAN LEVEL-1  
LIGHTING POWER AND SIGNAL  
1/8" = 1'-0"



4 PART PLAN LEVEL-4  
LIGHTING PLAN  
1/8" = 1'-0"

NO.	DATE	DESCRIPTION
1	03/14/24	ISSUE SET
2	05/29/24	ISSUE SET
3	06/26/24	ISSUE SET



**Maine Medical Center**  
 Pkg F - Garage / Vault / Conn / Helipad  
 Portland, ME  
 MMC Project No. 21845

**ELECTRICAL**  
**GARAGE**  
**PART PLANS**

Designer No. 4578 Logo Number 02/24/24  
 Scale By: AS DESIGN Shared Number PING#  
 Drawing No. 4578(03)1248  
 Project Name: The Maine Center

**E500**