

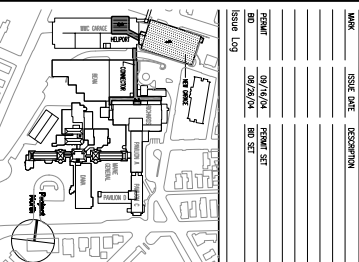
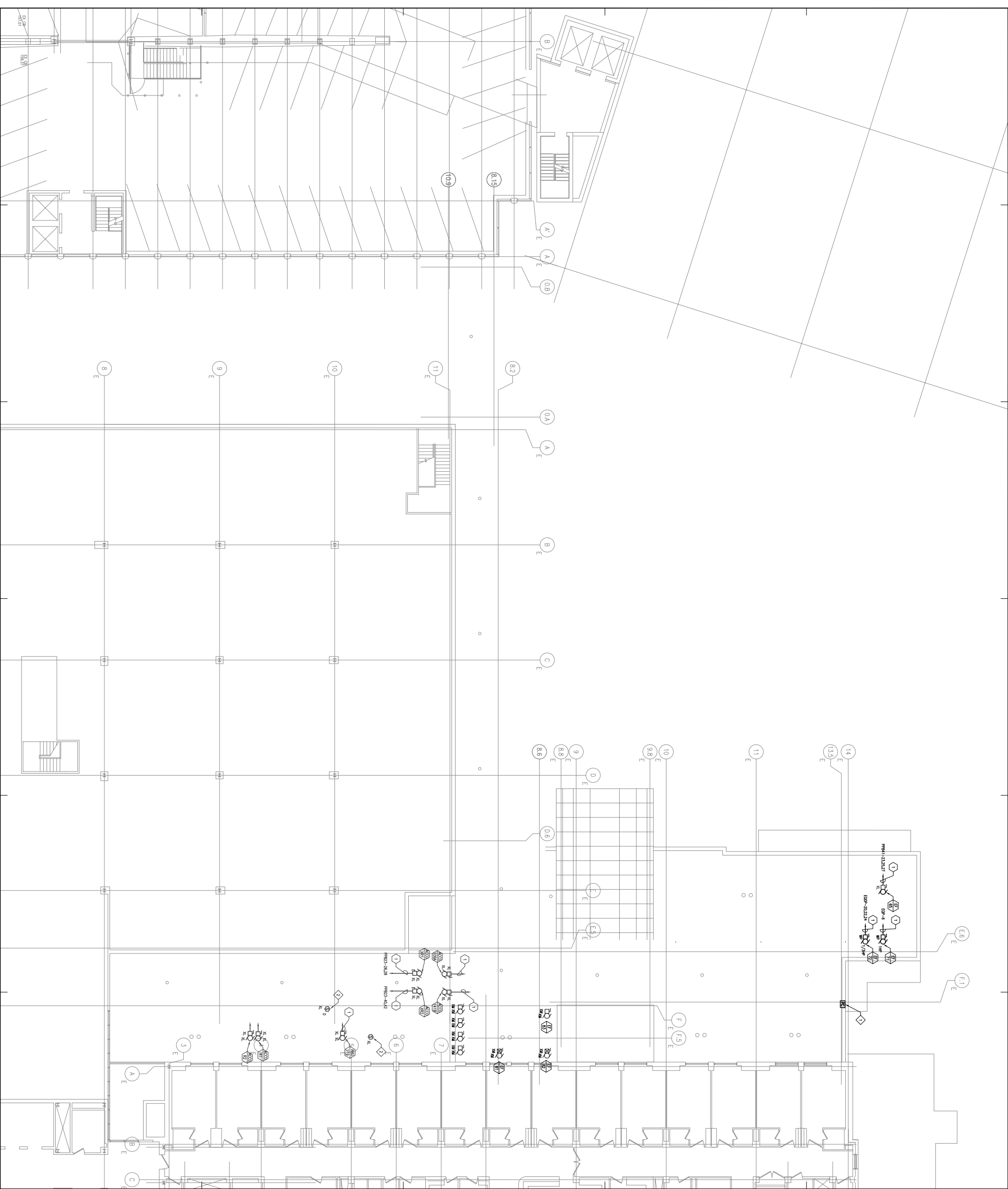
General Notes:

BRANCH CIRCUIT NOTES:

- 1. ALL BRANCH CIRCUITS SHALL BE INSTALLED IN ACCORDANCE WITH THE LATEST EDITION OF THE NATIONAL ELECTRICAL CODE (NEC).
- 2. ALL BRANCH CIRCUITS SHALL BE INSTALLED IN ACCORDANCE WITH THE LATEST EDITION OF THE NATIONAL ELECTRICAL CODE (NEC).
- 3. ALL BRANCH CIRCUITS SHALL BE INSTALLED IN ACCORDANCE WITH THE LATEST EDITION OF THE NATIONAL ELECTRICAL CODE (NEC).

EQUIPMENT NOTES:

- 1. CONNECTION TO PERMISSIBLE DEVICES TO CONNECTIONS LISTED IN THE EQUIPMENT NOTES SHALL BE MADE IN ACCORDANCE WITH THE LATEST EDITION OF THE NATIONAL ELECTRICAL CODE (NEC).
- 2. ALL EQUIPMENT SHALL BE INSTALLED IN ACCORDANCE WITH THE LATEST EDITION OF THE NATIONAL ELECTRICAL CODE (NEC).
- 3. ALL EQUIPMENT SHALL BE INSTALLED IN ACCORDANCE WITH THE LATEST EDITION OF THE NATIONAL ELECTRICAL CODE (NEC).



PRO
ARCHITECTURE
PLANNING
DESIGN
CONSTRUCTION
MANAGEMENT

1477 Main Street
Portland, ME 04101
Tel: 603.761.1111
www.proarch.com

Maine Medical Center
Pkg F - Garage / Vault / Conn / Helipad
Portland, ME
MMC Project No. 21845

ELECTRICAL CONNECTOR ROOF POWER PLAN

Revision No. 4818 Date Issued 08/26/14
Scale 1/8" = 1'-0" Sheet Number PIG#F
Drawing No. 45125321280
Project Name Maine Medical Center
Project No. 21845

E30R.2