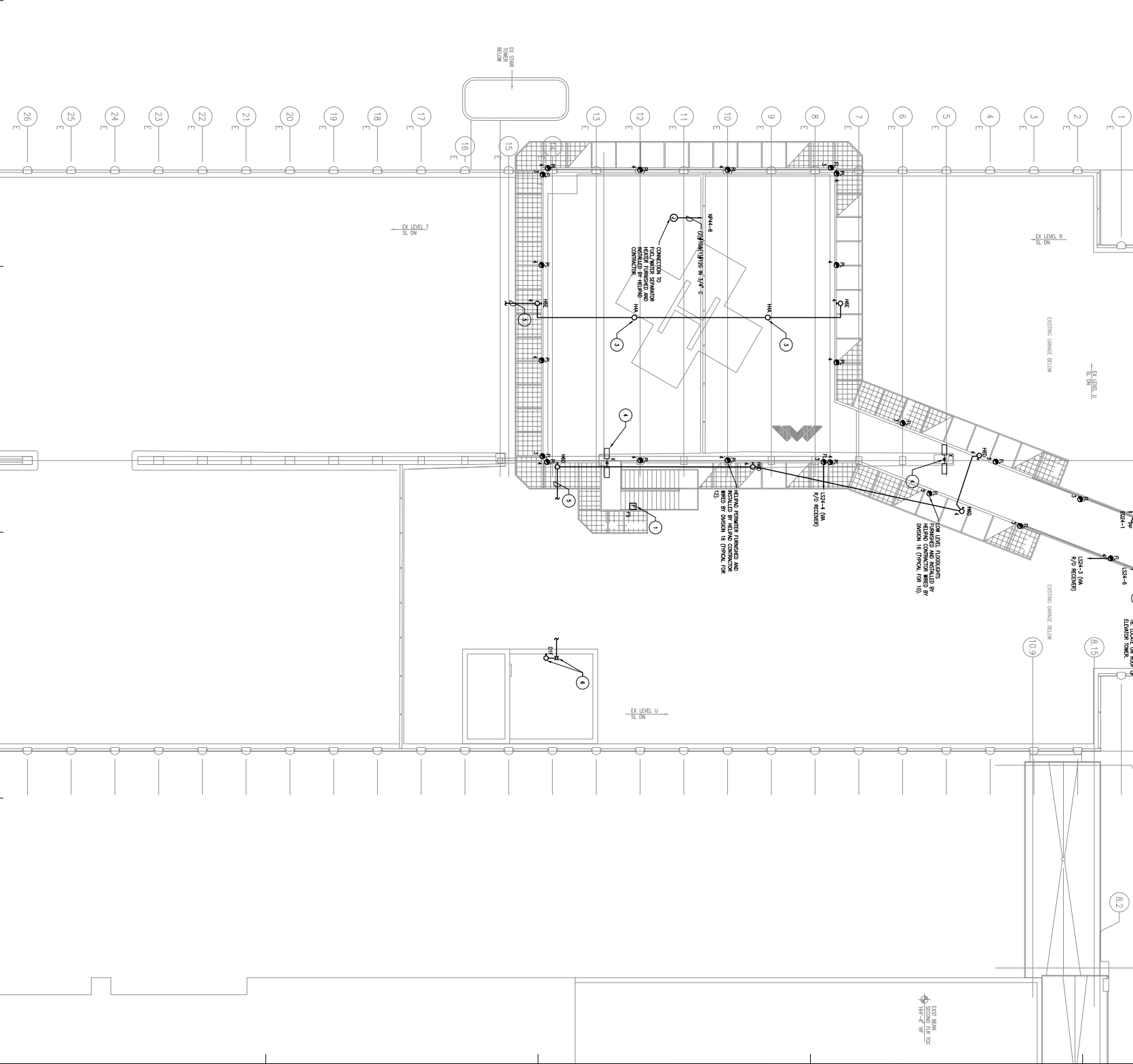


General Notes:
DRAWING NOTES:
1. GENERAL: THE SUPPRESSION SYSTEM ADDITIONAL PULL STUDS, SPACERS AND METALS BY AROUND CONSTRUCTION MUST BE MADE TO MATCH EXISTING SUPPRESSION SYSTEM PER 2015 IBC 901.2.1 AND 901.2.2.
2. NEWLY OPERATED RECEIVERS/CONTROLLED PHASING AND REGULATOR SHALL BE INSTALLED TO MATCH EXISTING SUPPRESSION SYSTEM.
3. SPACERS MARKED BELOW HELIPAD SECT ON STRUCTURE.
4. SUPPRESS BRANDED FOR LIGHTING OF PREVIOUS SECT BELOW.
5. SUPPRESS BRANDED FOR LIGHTING OF PREVIOUS SECT BELOW TO BE TO EXISTING LIGHTING CREATES SPACING SPACING SECT.
6. PHASING AND METAL "MATCHING" PROVISIONS HANDLING SECT IN EXISTING ALUMINUM LIGHT. BE AND 6/10 RECEIVERS/CONTROLLED PHASING AND REGULATOR SHALL BE INSTALLED TO MATCH EXISTING SUPPRESSION SYSTEM.
7. SPACING CONTACTS 1/4" VERTICAL-1/8" OR EQUAL.
EQUIPMENT NOTES:
1. CONNECTION TO AIRBORNE.



Commission No.	4828	Sheet Number	06/26/16
Drawn By	E.L.	Scale	1/8" = 1'-0"
Checked By	E.L.	Project No.	48282011MB
Project Name	Maine Medical Center		

PRO
ARCHITECTURE
PLANNING
SHOWROOM
1477 Middle Street
Portland, ME 04102
Phone: 603.878.1200
Fax: 603.878.1201

Project No. 4828

Maine Medical Center
Pkg F - Garage / Vault / Conn / Helipad
Portland, ME
MMC Project No. 21845

**ELECTRICAL HELIPAD
LEVEL 3 LIGHTING, POWER,
AND SIGNAL PLAN**

Scale: 1/8" = 1'-0"

DATE	DESCRIPTION
06/14/16	ISSUE SET
06/26/16	REV SET

Scale Log