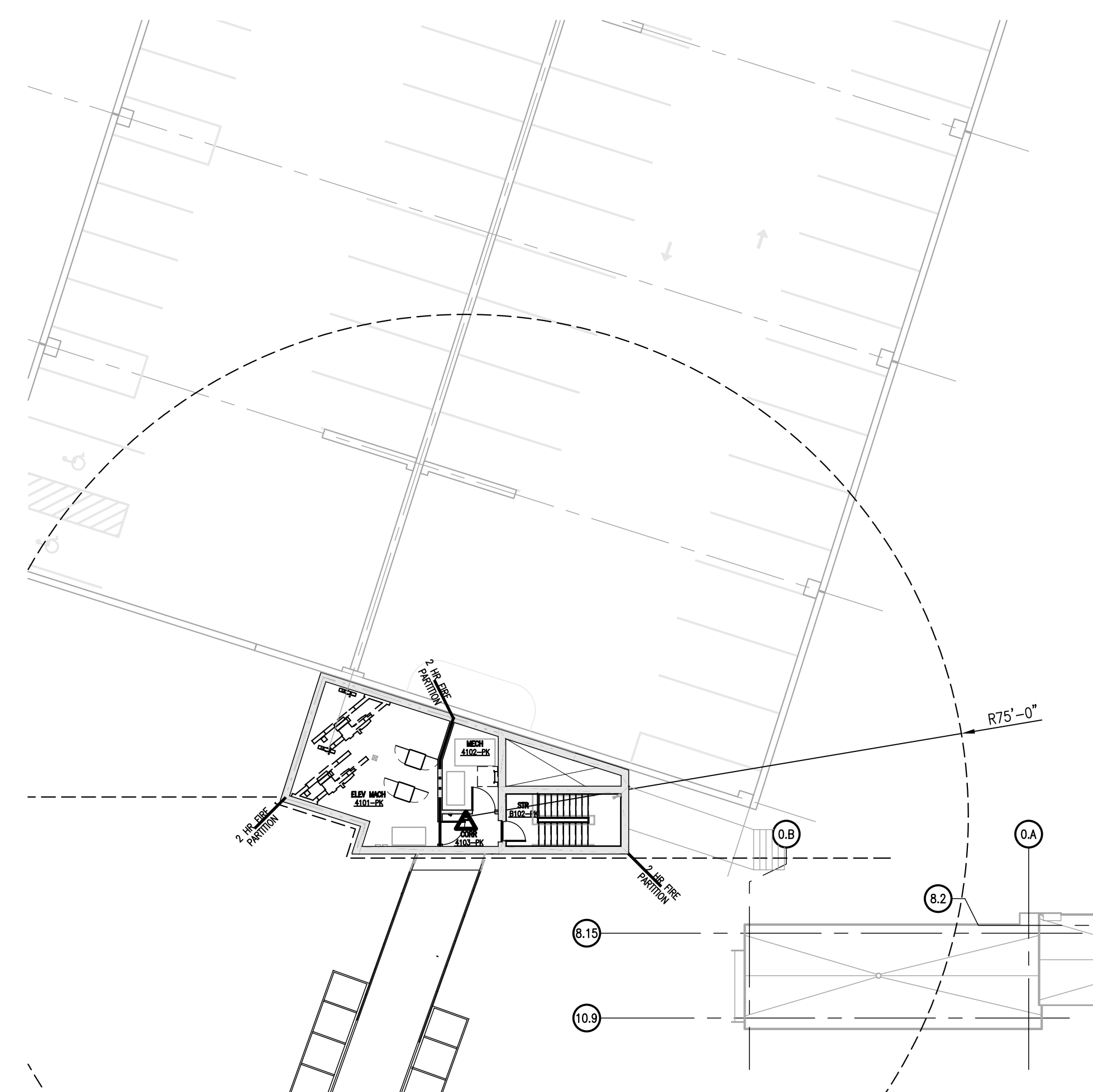


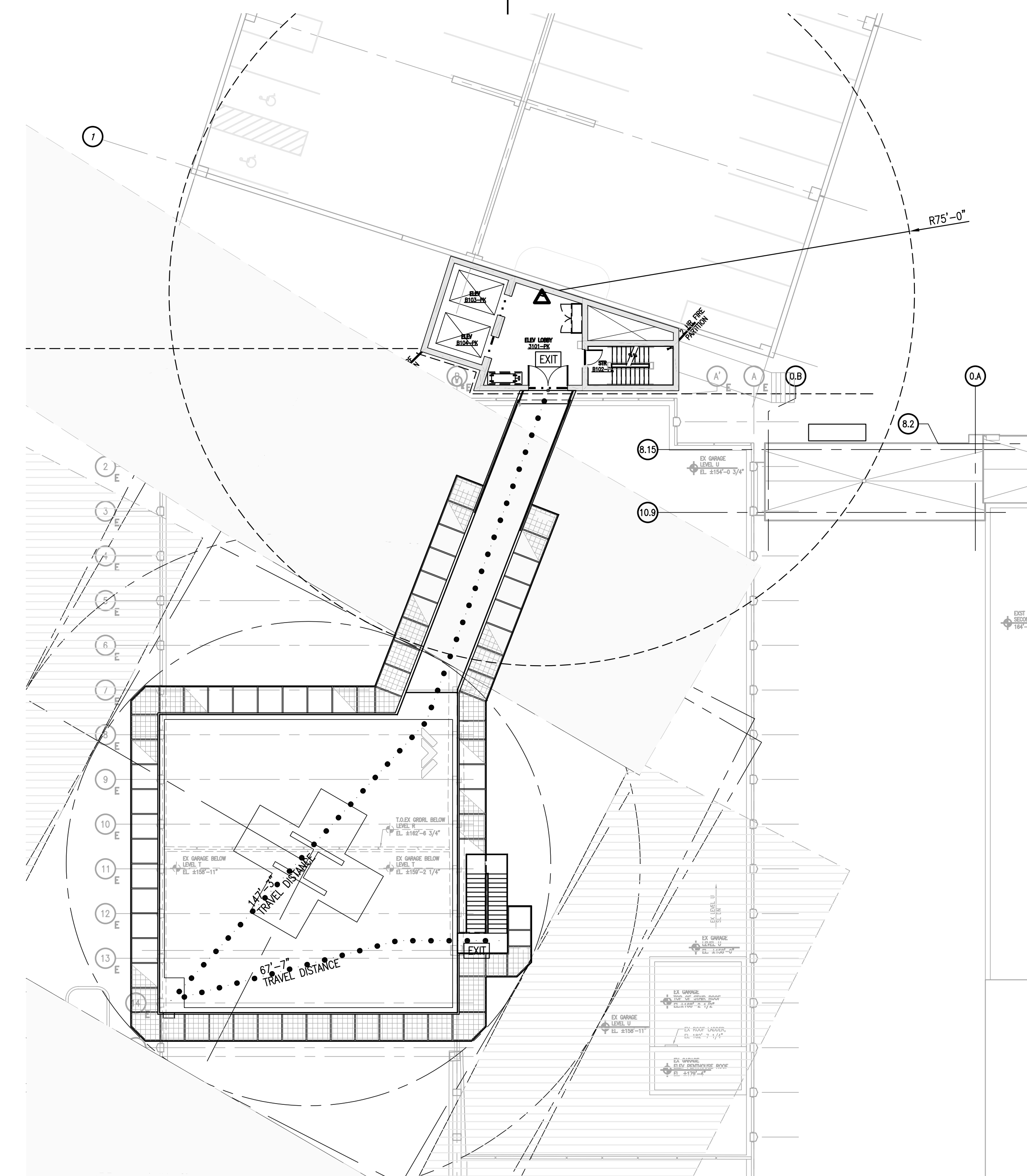
General Notes:

LIFE SAFETY LEGEND

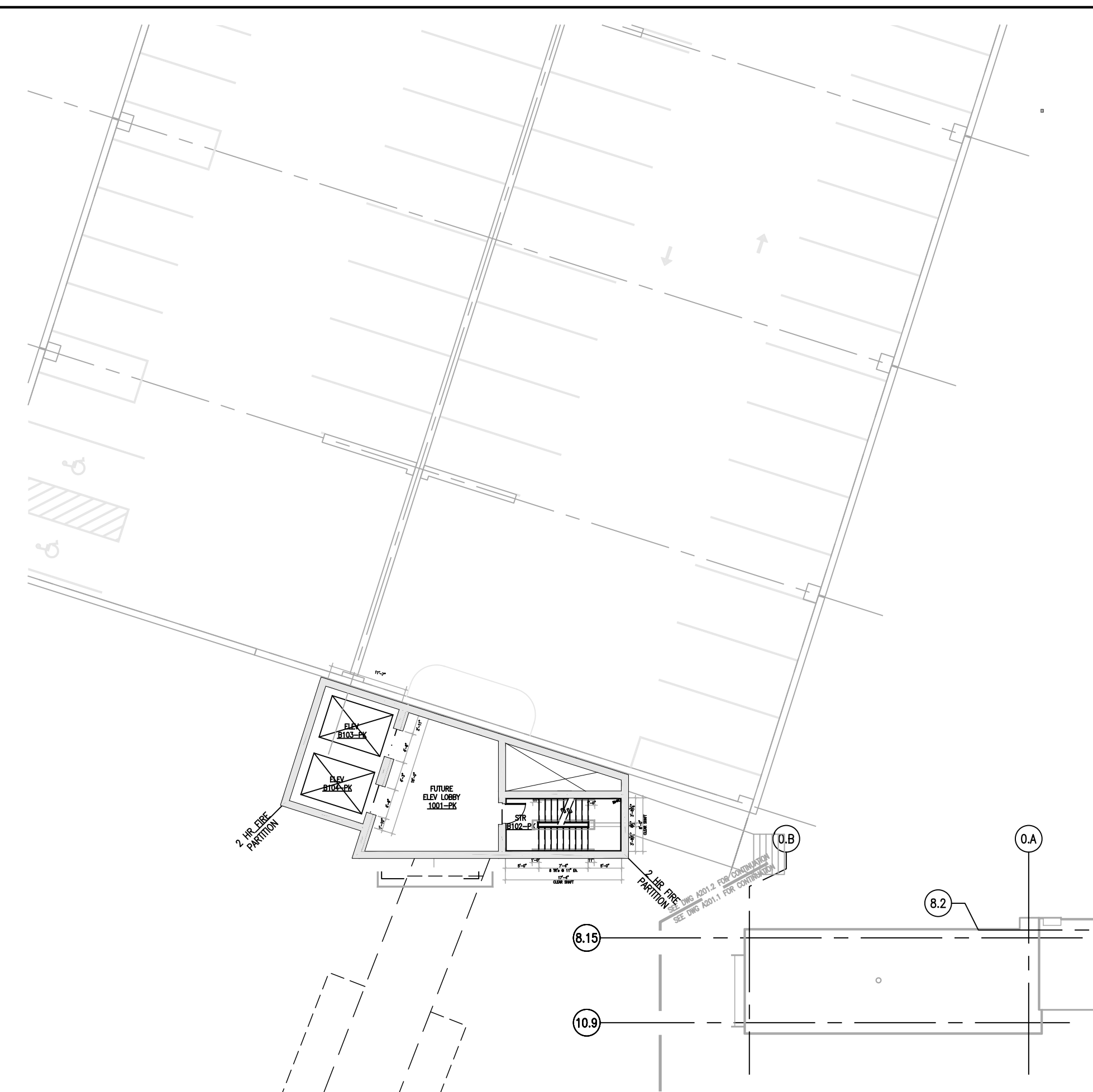
- RATED PARTITIONS ARE INDICATED AS FOLLOWS:
 - 1HR FIRE RATED PARTITION
 - 2HR FIRE RATED PARTITION
 - NON-RATED SMOKE RESISTANT PARTITION
 - 1HR SMOKE BARRIER
 - 2HR RATED FIRE AND SMOKE BARRIER
 - PATH OF EXIT TRAVEL
 - EXIT INDICATES EXIT LOCATION
 - SUITE (UNRATED)
 - CONNECTOR PROJECT SCOPE
 - EXISTING EGRESS STAR
 - POINT OF EGRESS ACCESS
 - PORTABLE FIRE EXTINGUISHER
 - EXIT SIGN
 - HOSE STATION



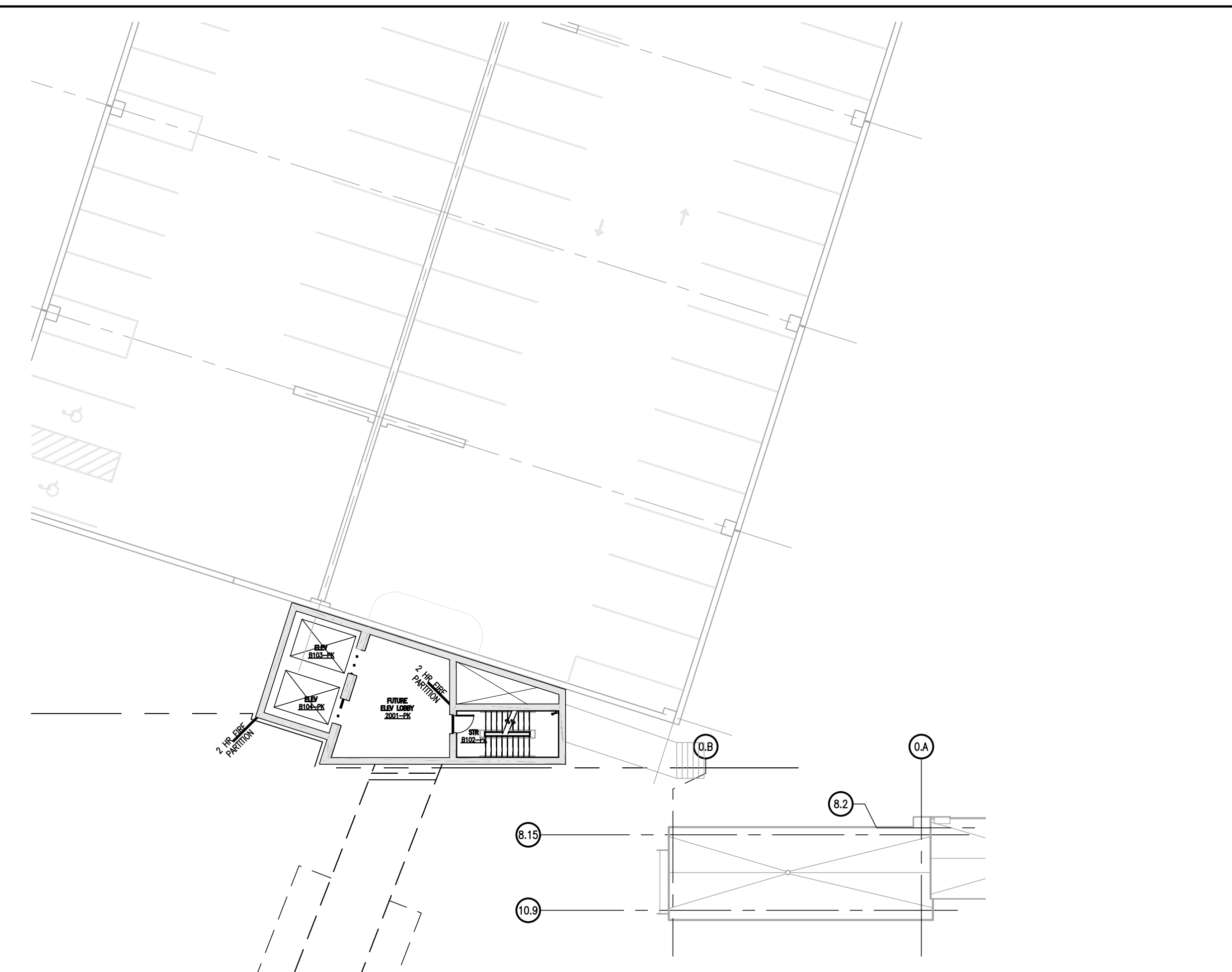
FOURTH LEVEL
LIFE SAFETY PLAN
SCALE: 1/16" = 1'-0"



THIRD LEVEL
LIFE SAFETY PLAN
SCALE: 1/16" = 1'-0"



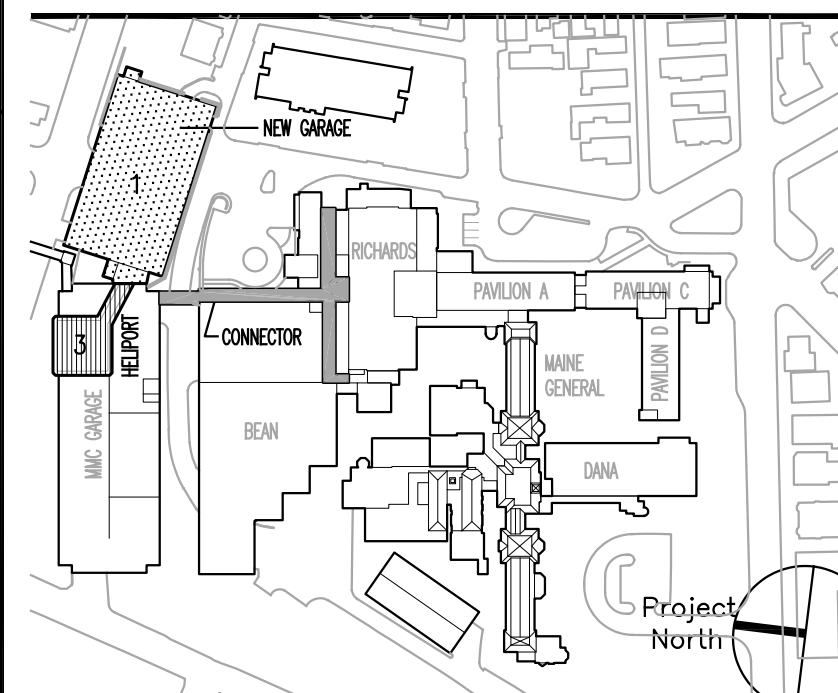
(FUTURE) FIRST LEVEL
LIFE SAFETY PLAN (NOT OCCUPIED)
SCALE: 1/16" = 1'-0"



(FUTURE) SECOND LEVEL
LIFE SAFETY PLAN (NOT OCCUPIED)
SCALE: 1/16" = 1'-0"

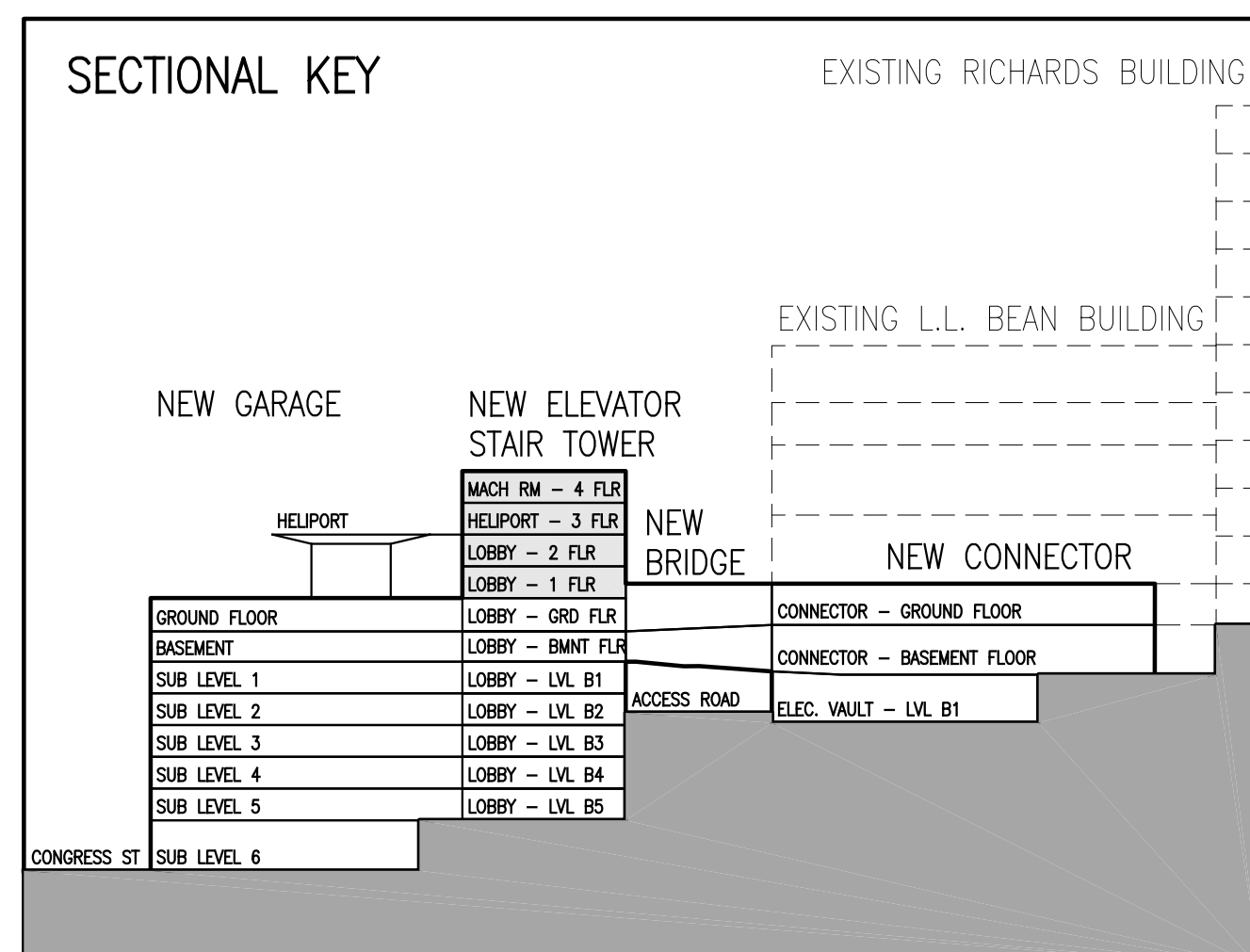
MARK	ISSUE DATE	DESCRIPTION
PERMIT	09/18/04	PERMIT SET
BD	08/28/04	BD SET

Issue Log



Key Plan

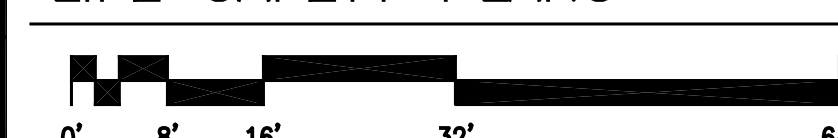
TRO
ARCHITECTURAL
PLANNING
ENGINEERING
INTERIOR
The Ritchie Organizat
80 Bridge Street
Newton, MA 02459-1
617-555-94



GARAGE CODE ANALYSIS - LIFE SAFETY				GARAGE FIRE RATINGS - LIFE SAFETY			GARAGE FIRE RATINGS - BUILDING CODE			GARAGE CODE ANALYSIS - BUILDING CODE			
NFPA 101 2003 - CONSTRUCTION: NA, OCCUPANCY: STORAGE				NFPA 101 2003 - ORDINARY HAZARD STORAGE *			BOCA 1999 - TABLE 602 & 705.2 CONSTRUCTION TYPE 2B			BOCA 1999 - CONSTRUCTION: TYPE 2B, OCCUPANCY: S-2			
SECTION	SECTION DESCRIPTION	REQUIREMENT	COMMENTS	ITEM DESCRIPTION	FIRE RATING	COMMENTS	ITEM DESCRIPTION	FIRE RATING	COMMENTS	SECTION	SECTION DESCRIPTION	REQUIREMENT	COMMENTS
6.1.1.3	CLASSIFICATION OF OCCUPANCY	CHAPTER 42	STORAGE	EXTERIOR BEARING WALLS	.1 HRS.		EXTERIOR WALLS (FIRE SEPARATION 0-5')	.2 HRS.		302.1, 308.3	USE GROUP	S-2 STORAGE	ADDITION TO EXISTING PARKING FACILITY
42.1.5	CLASSIFICATION OF HAZARD CONTENTS	COMPLY WITH SECTION 6.2	ORDINARY HAZARD	INTERIOR BEARING WALLS	.1 HRS.		EXTERIOR WALLS (FIRE SEPARATION GREATER THAN 10')	.1 HRS.		SECTION 603/TABLE 602	CONSTRUCTION CLASSIFICATION	2B	EXISTING AND NEW ADDITION
42.1.6	MINIMUM CONSTRUCTION REQUIREMENTS	NONE		COLUMNS	.1 HRS.		OPEN PARKING STRUCTURES; GENERAL	.2 HRS.		SECTION 406.1	SECTION 406.1	HEIGHT AND AREA LIMITATION FOR OPEN PARKING STRUCTURES	OPEN PARKING STRUCTURES ARE NOT REQUIRED TO CONFORM TO SECTION 408.0 FOR PUBLIC GARAGES
42.1.7	OCCUPANT LOAD (137 PEOPLE PER LEVEL BASED ON BOCA '99)	THE OCCUPANT LOAD SHALL BE DETERMINED ON THE BASIS OF THE MAXIMUM PROBABLE POPULATION OF THE SPACE	REFER TO THE BUILDING CODE OCCUPANCY SECTION	BEAMS, GIRDERS, TRUSSES, AND ARCHES	.1 HRS.		FIRE ENCLOSURE OF EXITS (OTHER THAN EXITS AND ELEVATOR HOISTWAYS)	.2 HRS.		TABLE 406.4	HEIGHT AND AREA LIMITATION FOR OPEN PARKING STRUCTURES	10 STORES = 100' HT. 50,000 SQ. FT. AREA	PARKING ADDITION IS TO MATCH THE EXISTING JOB CONSTRUCTION. HEIGHTS AND AREAS MENTIONED HERE ARE SUBJECT TO POTENTIAL INCREASES PURSUANT TO 504.2 AND 506.0
42.2	MEANS OF EGRESS REQUIREMENTS	FLOOR OPENINGS IN MEANS OF EGRESS SHALL NOT BE LESS THAN 32" CLEAR WIDTH		FLOOR CONSTRUCTION	.1 HRS.		OTHER NONBEARING PARTITIONS	.0 HRS.		SECTION 506.2	STREET FRONTAGE INCREASE	WHERE A STRUCTURE HAS MORE THAN 25% OF THE BUILDING PERIMETER FRONTS A STREET AREA LIMITATIONS OF TABLE 503 SHALL BE INCREASED 2% PER EVERY 1% OF SUCH EXCESS FRONTAGE	EXISTING GARAGE PERIMETER EQUALS 1,579 LF. CRESCENT ST + CONGRESS STREET PERIMETER OF THE ADDITION = 850/1579 = 53.8%. -25% PER 506.2 = 28.8%. 28.8% x 2% = 0.576%. 1,579 x 0.576% = 908.0 SQ. FT. POSSIBLE PERIMETER INCREASE OF 28,800. 50,000 + 28,800 = 78,800 OF ALLOWABLE SQUARE FOOTAGE. ACTUAL SQUARE FOOTAGE OF GARAGE AND LINK = 69,200 SQ. FT.
TRAVEL DISTANCES				TRAVEL DISTANCES			TRAVEL DISTANCES			TRAVEL DISTANCES			
A TO EXIT	300' BOCA 400' NFPA	REFER TO PLANS	BOCA 1999, EXIT ACCESS TRAVEL; TABLE 1006.5 REMOTE POINT TO NEAREST EXIT	ROOF CONSTRUCTION	.1 HRS.		STRUCTURAL MEMBERS SUPPORTING WALL	.1 HRS.		TABLE 1008.1.2	MAXIMUM FLOOR AREA ALLOWANCES PER OCCUPANT	200 GROSS SQUARE FEET PER OCCUPANT	27,296 SF PER LEVEL, 27,296 DIVIDED BY 200=136.43 OR 137 PEOPLE PER FLOOR
B TO EXIT	300' BOCA 400' NFPA	REFER TO PLANS	BOCA; EXIT ACCESS TRAVEL; TABLE 1006.5 REMOTE POINT TO NEAREST EXIT	ROOF CONSTRUCTION	.1 HRS.		FLOOR CONSTRUCTION INCLUDING BEAM	.1 HRS.		TABLE 1010.2	MINIMUM NUMBER OF EXITS FOR OCCUPANT LOAD	2 EXITS FOR 500 OR LESS PEOPLE	137 PEOPLE PER FLOOR DIVIDED BY 2 EXITS = 68.5 OR 69 PEOPLE PER EXIT
REMOVEDNESS	> 3" MAX DIA. 0.8" MIN. DIA.	REFER TO PLANS	BOCA; 1006.4.1 REMOVEDNESS; EXITS OR EXIT ACCESS DOORS	EXTERIOR NONBEARING WALLS	.0 HRS.		ROOF CONSTRUCTION INCLUDING BEAMS, TRUSSES AND FRAMING, ARCHES AND ROOF DECK	.1 HRS.		TABLE 1009.4	EGRESS CONVERGENCE (OCCURS @ SUBLEVEL 2 CRESCENT ST. EXIT)	15' OR LESS IN HEIGHT TO LOWEST MEMBER	.1 HRS.
				* INFORMATION TAKEN FROM 1999 NFPA 220 TABLE 3-1 TYPE (I111) CONSTRUCTION						TABLE 1009.2			
										EGRESS CAPACITY SHALL NOT BE LESS THAN THE SUM OF THE TWO FLOORS			
										UN-SPRINKLERED, USE GROUP S STAIRWAYS ARE ALLOWED 3" PER PERSON, DOORS 2" PER PERSON PROVIDED: 2			
										TABLE 1006.5			
										EXIT ACCESS TRAVEL REQUIRED MAX PROVIDED MAX			
										300' FT. (MAX) 165' FT. (LOWEST)			
										SEE PLANS			

Maine Medical Center
Pkg F - Garage / Vault / Conn / Heliport
Portland, ME
MMC Project No. 21845

Drawing Title
ELEVATOR STAIR TOWER LIFE SAFETY PLANS



Commission No.	4678	Date Issued	08/28/04
Scale	1/16" = 1'-0"	Sheet Number	PKG-F
Drawn By	JH/NB	Approved By	BS
File Name	46780104.1.dwg	Project	G104.1
Copyright	© 2004	The Ritchie Organization	