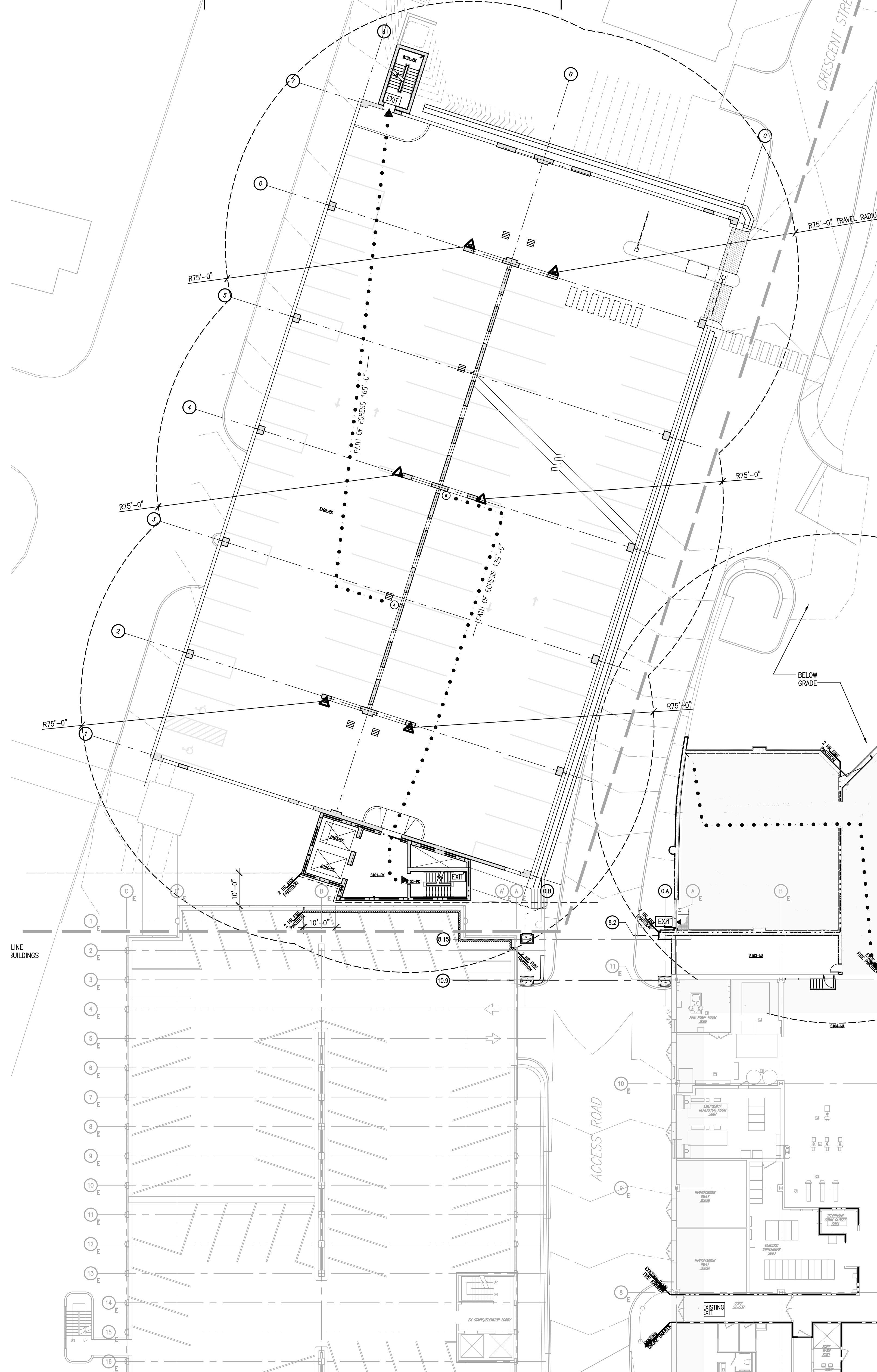


B4 SUB-BASEMENT LEVEL 2
LIFE SAFETY PLAN
SCALE: 1/16" = 1'-0"

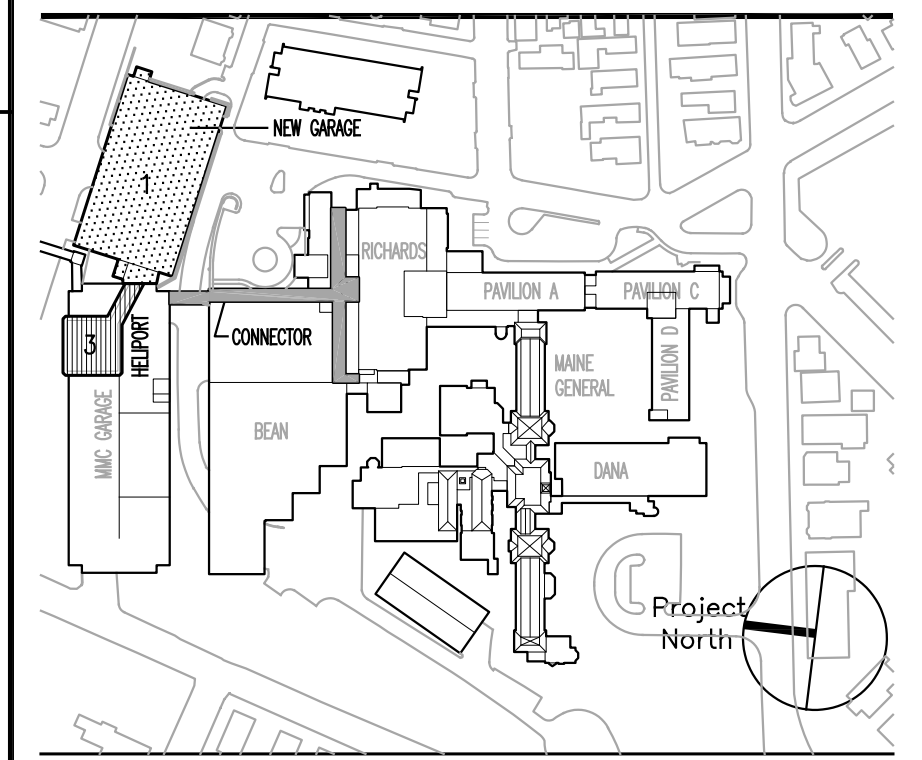


D4 SUB-BASEMENT LEVEL 1
LIFE SAFETY PLAN
SCALE: 1/16" = 1'-0"

- General Notes:**
- LIFE SAFETY LEGEND**
- 1. RATED PARTITIONS ARE INDICATED AS FOLLOWS:
 - 1HR FIRE RATED PARTITION
 - 2HR FIRE RATED PARTITION
 - NON-RATED SMOKE RESISTANT PARTITION
 - 1HR SMOKE BARRIER
 - 2HR RATED FIRE AND SMOKE BARRIER
 - ... PATH OF EXIT TRAVEL
 - EXIT INDICATES EXIT LOCATION
 - SUITE (UNRATED)
 - CONNECTOR PROJECT SCOPE
 - EXISTING EGRESS STAR
 - ... POINT OF EGRESS ACCESS
 - △ PORTABLE FIRE EXTINGUISHER
 - EXIT SIGN
 - HOSE STATION

MARK	ISSUE DATE	DESCRIPTION
PERMIT	09/18/04	PERMIT SET
BD	08/28/04	BD SET

Issue Log



Key Plan

TRO
ARCHITECTURAL
PLANNING
ENGINEERING
INTERIOR DESIGN

The Ritchie Organization
80 Bridge Street
Newton, MA 02459-1111
617-552-9444

SECTIONAL KEY

FLOOR	DESCRIPTION	CONSTRUCTION
GROUND FLOOR	CONNECTOR - GROUND FLOOR	CONCRETE
BASEMENT LEVEL 1	CONNECTOR - BASEMENT FLOOR	CONCRETE
BASEMENT LEVEL 2	CONNECTOR - BASEMENT FLOOR	CONCRETE
BASEMENT LEVEL 3	CONNECTOR - BASEMENT FLOOR	CONCRETE
BASEMENT LEVEL 4	CONNECTOR - BASEMENT FLOOR	CONCRETE
BASEMENT LEVEL 5	CONNECTOR - BASEMENT FLOOR	CONCRETE
BASEMENT LEVEL 6	CONNECTOR - BASEMENT FLOOR	CONCRETE

GARAGE CODE ANALYSIS - LIFE SAFETY			
SECTION	SECTION DESCRIPTION	REQUIREMENT	COMMENTS
NFPA 101 2003 - CONSTRUCTION: NA, OCCUPANCY: STORAGE			
6.1.1.3	CLASSIFICATION OF OCCUPANCY	CHAPTER 42	STORAGE
42.1.5	CLASSIFICATION OF HAZARD CONTENTS	COMPLY WITH SECTION 6.2	ORDINARY HAZARD
42.1.6	MINIMUM CONSTRUCTION REQUIREMENTS	NONE	
42.1.7	OCCUPANT LOAD (137 PEOPLE PER LEVEL BASED ON BOCA '99)	REFER TO THE BUILDING CODE OCCUPANCY SECTION	
42.2	MEANS OF EGRESS REQUIREMENTS	FLOOR OPENINGS IN MEANS OF EGRESS SHALL NOT BE LESS THAN 32 CLEAR WIDTH	

TRAVEL DISTANCES			
TRAVEL	ALLOWED MAX.	PROVIDED	COMMENTS
A TO EXIT	300' BOCA 400' NFPA	REFER TO PLANS	BOCA 1999, EXIT ACCESS TRAVEL; TABLE 1006.5 REMOTE POINT TO NEAREST EXIT
B TO EXIT	300' BOCA 400' NFPA	REFER TO PLANS	BOCA, EXIT ACCESS TRAVEL; TABLE 1006.5 REMOTE POINT TO NEAREST EXIT
REMOVEDNESS	> 3' MAX DIA. OF BALL DIA.	REFER TO PLANS	BOCA, 1006.4.1 REMOVEDNESS; EXITS OR EXIT ACCESS DOORS

GARAGE FIRE RATINGS - LIFE SAFETY		
ITEM DESCRIPTION	FIRE RATING	COMMENTS
NFPA 101 2003 - ORDINARY HAZARD STORAGE *		
EXTERIOR BEARING WALLS	1 HRS.	
INTERIOR BEARING WALLS	1 HRS.	
COLUMNS	1 HRS.	
BEAMS, GIRDERS, TRUSSES, AND ARCHES	1 HRS.	
FLOOR CONSTRUCTION	1 HRS.	
ROOF CONSTRUCTION	1 HRS.	
EXTERIOR NONBEARING WALLS	0 HRS.	

* INFORMATION TAKEN FROM 1999 NFPA 220 TABLE 3-1 TYPE (111) CONSTRUCTION

GARAGE FIRE RATINGS - BUILDING CODE		
ITEM DESCRIPTION	FIRE RATING	COMMENTS
BOCA 1999 - TABLE 602 & 705.2 CONSTRUCTION TYPE 2B		
EXTERIOR WALLS (FIRE SEPARATION 0-5')	2 HRS.	
EXTERIOR WALLS (FIRE SEPARATION GREATER THAN 10')	1 HRS.	
FIRE ENCLOSURE OF EXITS	2 HRS.	
SHAFTS (OTHER THAN EXITS AND ELEVATOR HOISTWAYS)	2 HRS.	
OTHER NONBEARING PARTITIONS	0 HRS.	
INTERIOR COLUMNS AND FRAMING	1 HRS.	
STRUCTURAL MEMBERS SUPPORTING WALL	1 HRS.	
FLOOR CONSTRUCTION INCLUDING BEAM	1 HRS.	
ROOF CONSTRUCTION INCLUDING BEAMS, TRUSSES AND FRAMING, ARCHES AND ROOF DECK	1 HRS.	
15' OR LESS IN HEIGHT TO LOWEST MEMBER	1 HRS.	
GREATER THAN 15' TO LOWEST MEMBER	0 HRS.	

GARAGE CODE ANALYSIS - BUILDING CODE			
SECTION	SECTION DESCRIPTION	REQUIREMENT	COMMENTS
BOCA 1999 - CONSTRUCTION: TYPE 2B, OCCUPANCY: S-2			
302.1, 308.3	USE GROUP	S-2 STORAGE	ADDITION TO EXISTING PARKING FACILITY
SECTION 603/TABLE 602	CONSTRUCTION CLASSIFICATION	2B	EXISTING AND NEW ADDITION
SECTION 406.1	OPEN PARKING STRUCTURES; GENERAL		OPEN PARKING STRUCTURES ARE NOT REQUIRED TO CONFORM TO SECTION 408.0 FOR PUBLIC GARAGES
TABLE 406.4	HEIGHT AND AREA LIMITATION FOR OPEN PARKING STRUCTURES	10 STORES = 100' HT. 50,000 SQ. FT. AREA	PARKING ADDITION IS TO MATCH THE EXISTING JOB CONSTRUCTION. HEIGHTS AND AREAS MENTIONED HERE ARE SUBJECT TO POTENTIAL INCREASES PURSUANT TO 504.2 AND 504.0
SECTION 506.2	STREET FRONTAGE INCREASE	WHERE A STRUCTURE HAS MORE THAN 25% OF THE BUILDING PERIMETER FRONTAL STREET AREA LIMITATIONS OF TABLE 503 SHALL BE INCREASED 2% PER EVERY 1% OF SUCH EXCESS FRONTAGE	EXISTING GARAGE PERIMETER EQUALS 1,579 LF OF CRESCENT ST + CONGRESS STREET PERIMETER OF THE ADDITION = 850/1579 = 53.9%. -25% PER 506.2 = 28.8%. 28.8% x 2% = 0.576%. 5760,000 = A POSSIBLE PERMETER INCREASE OF 28,800'. 50,000 + 28,800 = 78,800 SF ALLOWABLE SQUARE FOOTAGE. ACTUAL SQUARE FOOTAGE OF GARAGE AND LINK = 69,300 SF
TABLE 1008.1.2	MAXIMUM FLOOR AREA ALLOWANCES PER OCCUPANT	200 GROSS SQUARE FEET PER OCCUPANT	27,296 SF PER LEVEL. 27,296 DIVIDED BY 200=136.43 OR 137 PEOPLE PER FLOOR
TABLE 1010.2	MINIMUM NUMBER OF EXITS FOR OCCUPANT LOAD	2 EXITS FOR 500 OR LESS PEOPLE	137 PEOPLE PER FLOOR DIVIDED BY 2 EXITS = 68.5 OR 69 PEOPLE PER EXIT
TABLE 1009.4	EGRESS CAPACITY SHALL NOT BE LESS THAN THE SUM OF THE TWO FLOORS		69 PEOPLE PER EXIT, PER LEVEL, X2 = 138 PEOPLE
TABLE 1009.2	EGRESS WIDTH PER OCCUPANT	UN-SPRINKLERED, USE GROUP S STAIRWAYS ARE ALLOWED 3" PER PERSON, DOORS 2" PER PERSON	STAIR: 138 X 3" = 41.4" REQ. 45" PROVIDED DOOR: 138 X 2" = 27.6" REQ. 41.25" PROVIDED
TABLE 1010.2	NUMBER OF EXITS REQUIRED PER LEVEL	REQUIRED: 2	
TABLE 1006.5	EXIT ACCESS TRAVEL REQUIRED MAX	300' FT. (MAX) 165' FT. (LOWEST)	SEE PLANS

Maine Medical Center
Pkg F - Garage / Vault / Conn / Heliport
Portland, ME MMC Project No. 21845

DRAWING TITLE
SUB BASEMENT LEVELS 2 & 1
GARAGE
LIFE SAFETY PLANS

0' 8' 16' 32' 64'

Commission No. 4678 Date Issued 08/28/04
Scale 1/16" = 1'-0" Sheet Number PKG-F
Drawn By JH/NB
Approved By BS
Filename 4678102-1.dwg
Copyright © 2004 The Ritchie Organization

G102.1