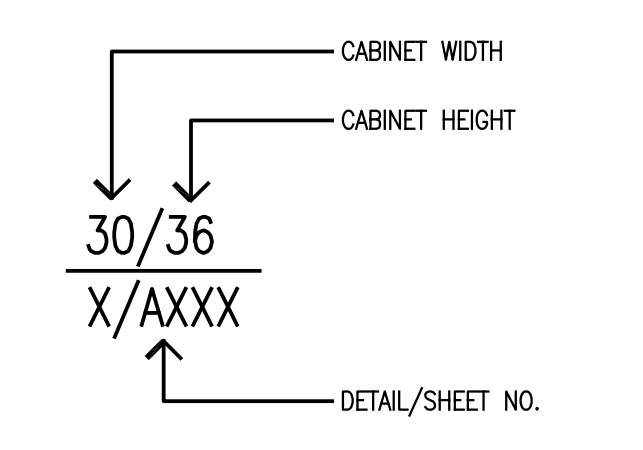
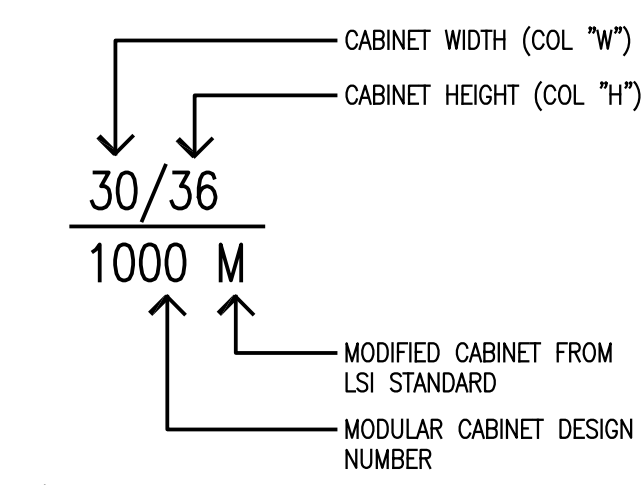


- General Notes:**
- 1.) PROVIDE END PANELS WHERE CASEWORK DOES NOT ABUT WALL.
 - 2.) PROVIDE 1-1/2" (MIN.) FILLER PIECE ON WALL & BASE CABINETS AND 1-1/2" (MIN.) EXTENSION TO COUNTER WHERE DISC OF CASEWORK ABUT WALL.
 - 3.) FIELD VERIFY ALL DIMENSIONS PRIOR TO FABRICATION AND INSTALLATION.
 - 4.) PROVIDE 3" LIGHT VALANCE WHERE TASK LIGHTING IS INDICATED UNDER WALL CABINETS.
 - 5.) WHERE VALANCES ARE PROVIDED, EXTEND SIDE PANELS OF WALL CABINET TO MATCH LIGHT VALANCE DIMENSION IF CABINET DOES NOT TERMINATE AT A WALL.
 - 6.) PROVIDE VALANCES AND BACKSPLASHES IN LONGEST POSSIBLE LENGTH OF MATERIAL TO MINIMIZE JOINTS.
 - 7.) FILLER PIECE SCRIBED TO SOFFIT AND WALL (TYP) - SEE DETAIL E2/AB00.
 - 8.) CUSTOM CABINETS SHALL BE DESIGNATED AS FOLLOWS:



- 9.) ALL MODULAR BASE AND WALL CABINET DESIGNS BASED ON LSI CORPORATION OF AMERICA, INC. COMPONENTS. REFER TO A820 AND A821.
- 10.) MODULAR CABINETS SHALL BE DESIGNATED AS FOLLOWS:



- 11.) INDICATES VIEW WINDOW TYPE. REFER TO SHEET A830 FOR DETAILS.

FINISH NOTE:
REFER TO THE ROOM FINISH SCHEDULE AND ARCHITECTURAL SPECIFICATIONS FOR INFORMATION REGARDING THE SPECIFIED FINISH.

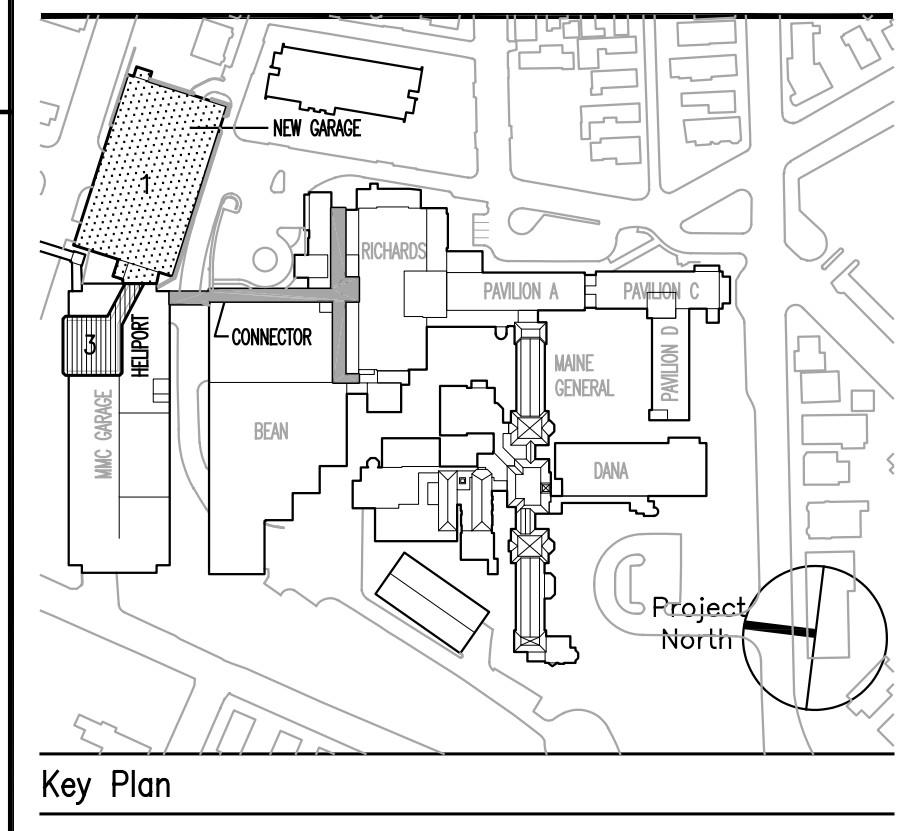
SYMBOL KEY

- FLOORCOVERING DISTR. SYMB. MATERIAL CODE
- PAINT DISTRIBUTION SYMBOL COLOR CODE
- WALLCOVERING DISTR. SYMB. MATERIAL CODE
- REDUCER/TRANSITION STRIP
- THRESHOLD (REFER TO ARCHITECTURAL SPECIFICATIONS FOR MATERIAL)
- DENOTES COLOR ON ALL WALLS OF ROOM
- DENOTES EXTENT OF COLOR/MATERIAL
- DENOTES COLOR/MATERIAL ABOVE
- DENOTES COLOR/MATERIAL BELOW

MARK	ISSUE DATE	DESCRIPTION

PERMIT	ISSUE DATE	PERMIT SET
BD	08/28/04	BD SET

Issue Log



TRO ARCHITECTURE
PLANNING
ENGINEERING
INTERIOR
The Ritchie Organizat'
80 Bridge St
Newton, MA 02459-1
617-552-94

Maine Medical Center
Pkg F - Garage / Vault / Conn / Heliport
Portland, ME MMC Project No. 21845

Drawing Title
**INTERIOR ELEVATIONS
NO. 2**

Commission No.	Date Issued
4678	08/28/04

Scale	Sheet Number
3/8" = 1'-0"	PKG-F

Drawn By	Approved By
BJS	AW

Filename: 4678a701.dwg
Copyright © 2004 The Ritchie Organizat'

A701