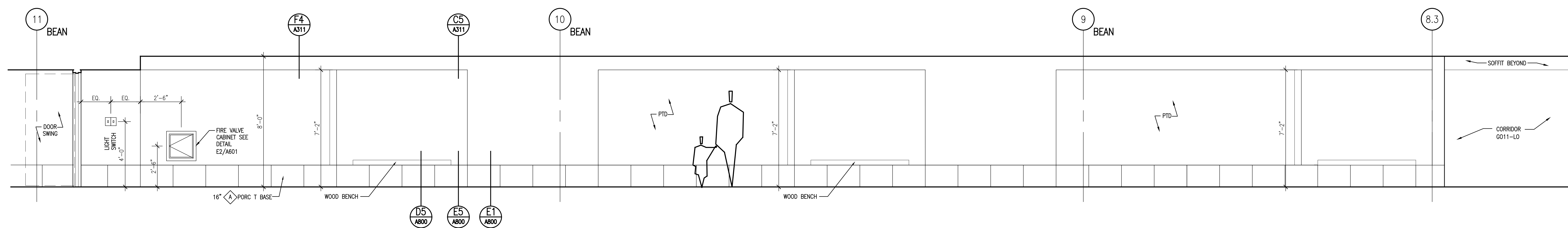
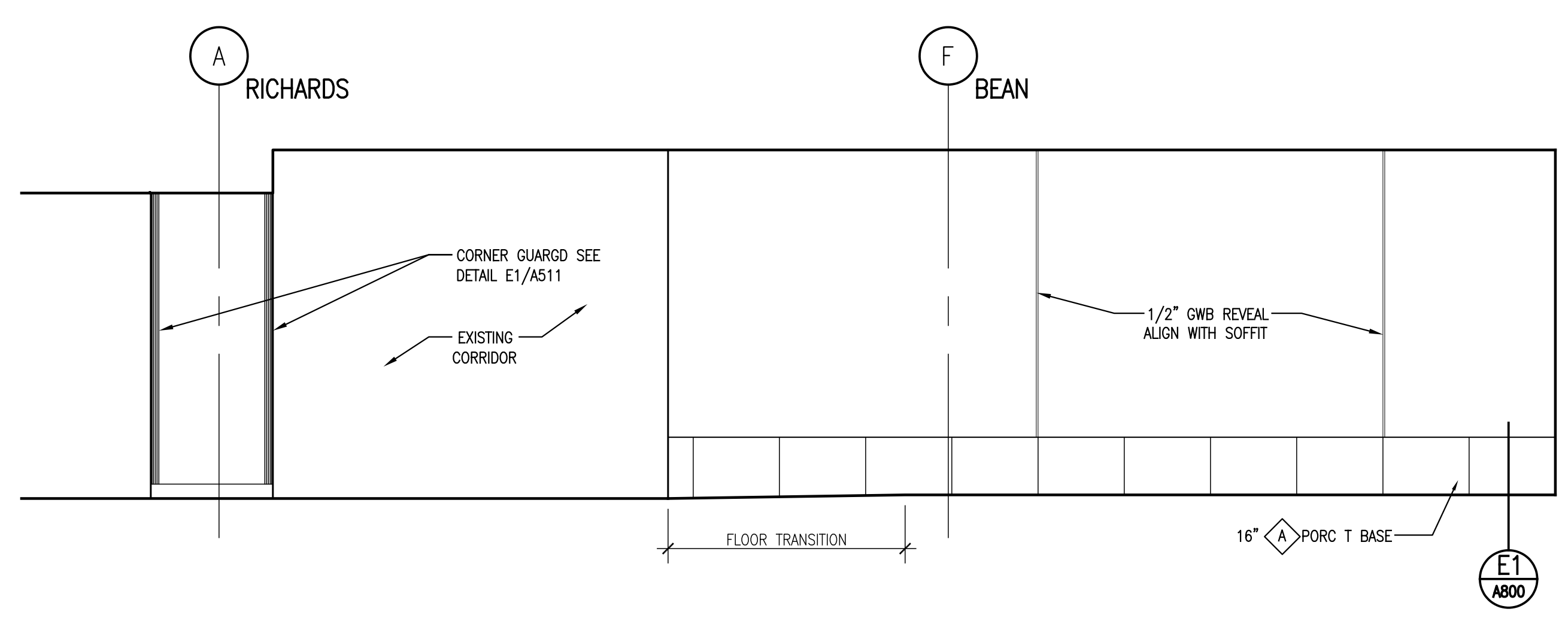


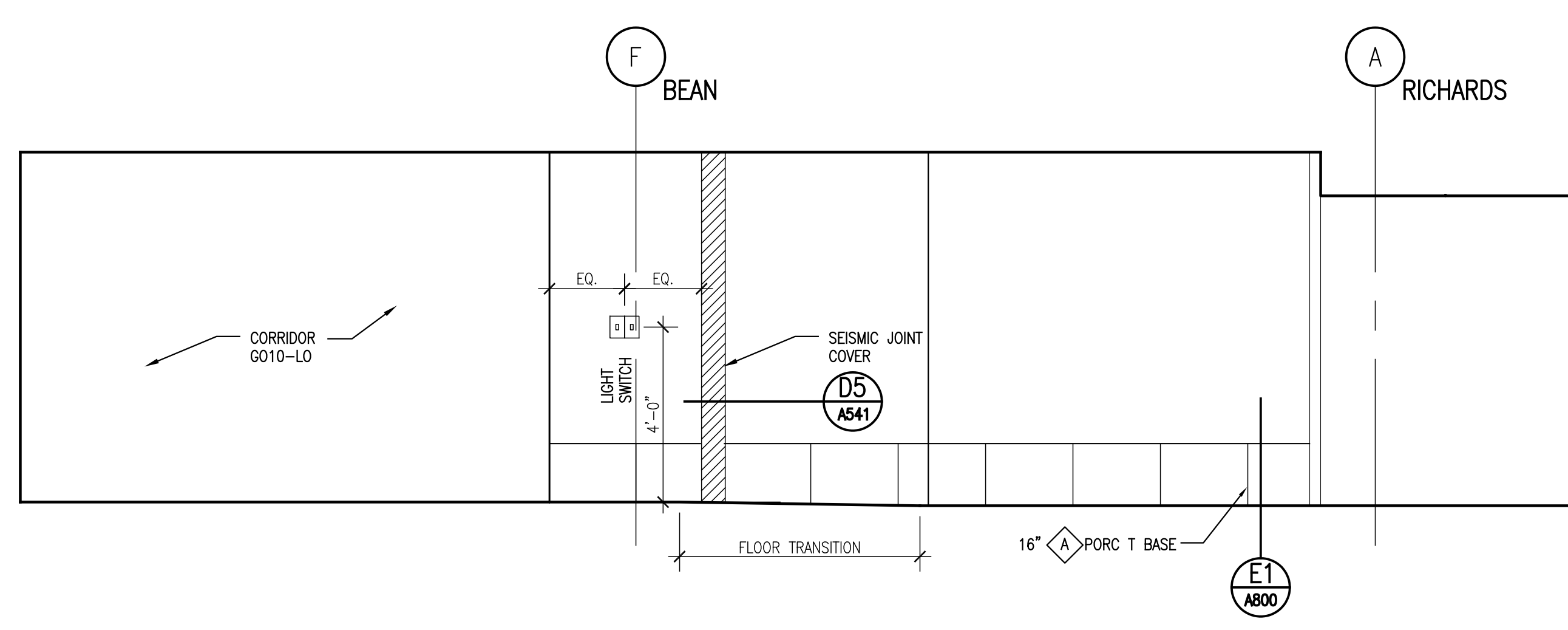
1 CORRIDOR - G008-LO / G009-LO
SCALE: 3/8" = 1'-0"



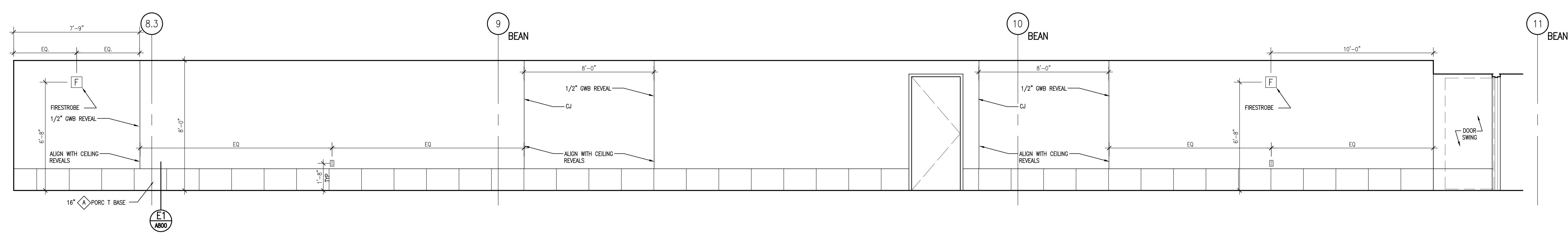
2 CORRIDOR G010-LO
SCALE: 3/8" = 1'-0"



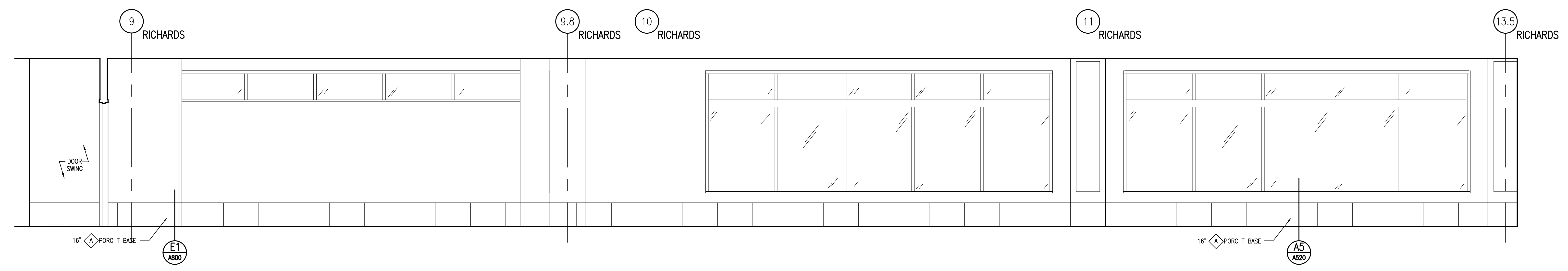
3 CORRIDOR G011-LO
SCALE: 3/8" = 1'-0"



4 CORRIDOR G011-LO
SCALE: 3/8" = 1'-0"

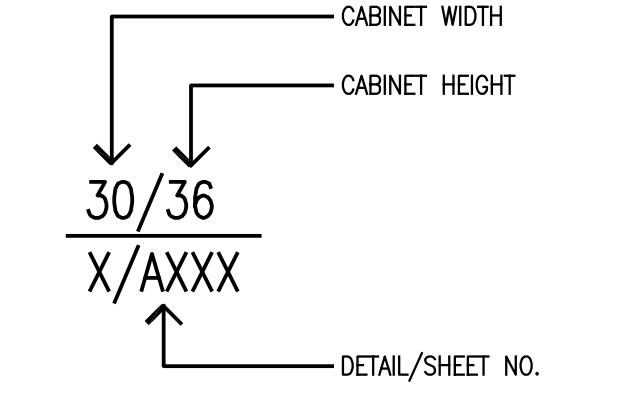


5 CORRIDOR G010-LO
SCALE: 3/8" = 1'-0"

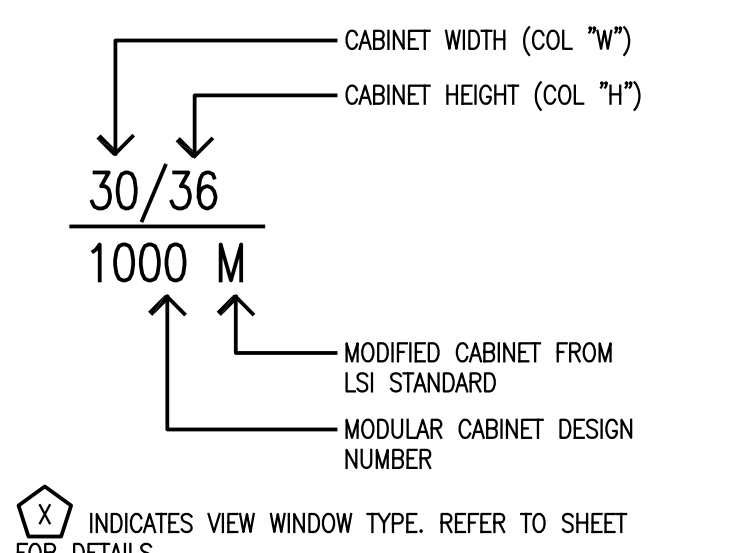


6 CORRIDOR - G008-LO / G009-LO
SCALE: 3/8" = 1'-0"

- General Notes:
- 1) PROVIDE END PANELS WHERE CASEWORK DOES NOT ABUT WALL.
 - 2) PROVIDE 1-1/2" (MIN.) FILLER PIECE ON WALL & BASE CABINETS AND 1-1/2" (MIN.) EXTENSION TO COUNTER WHERE DISCS OF CASEWORK ABUT WALL.
 - 3) FIELD VERIFY ALL DIMENSIONS PRIOR TO FABRICATION AND INSTALLATION.
 - 4) PROVIDE 3" LIGHT VALANCE WHERE TASK LIGHTING IS INDICATED UNDER WALL CABINETS.
 - 5) WHERE VALANCES ARE PROVIDED, EXTEND SIDE PANELS OF WALL CABINET TO MATCH LIGHT VALANCE DIMENSION IF CABINET DOES NOT TERMINATE AT A WALL.
 - 6) PROVIDE VALANCES AND BACKSPLASHES IN LONGEST POSSIBLE LENGTH OF MATERIAL TO MINIMIZE JOINTS.
 - 7) FILLER PIECE SCRIBED TO SOFFIT AND WALL (TYP) - SEE DETAIL E2/A800.
 - 8) CUSTOM CABINETS SHALL BE DESIGNATED AS FOLLOWS:



- 9) ALL MODULAR BASE AND WALL CABINET DESIGNS BASED ON LSI CORPORATION OF AMERICA, INC. COMPONENTS. REFER TO A820 AND A821.
- 10) MODULAR CABINETS SHALL BE DESIGNATED AS FOLLOWS:



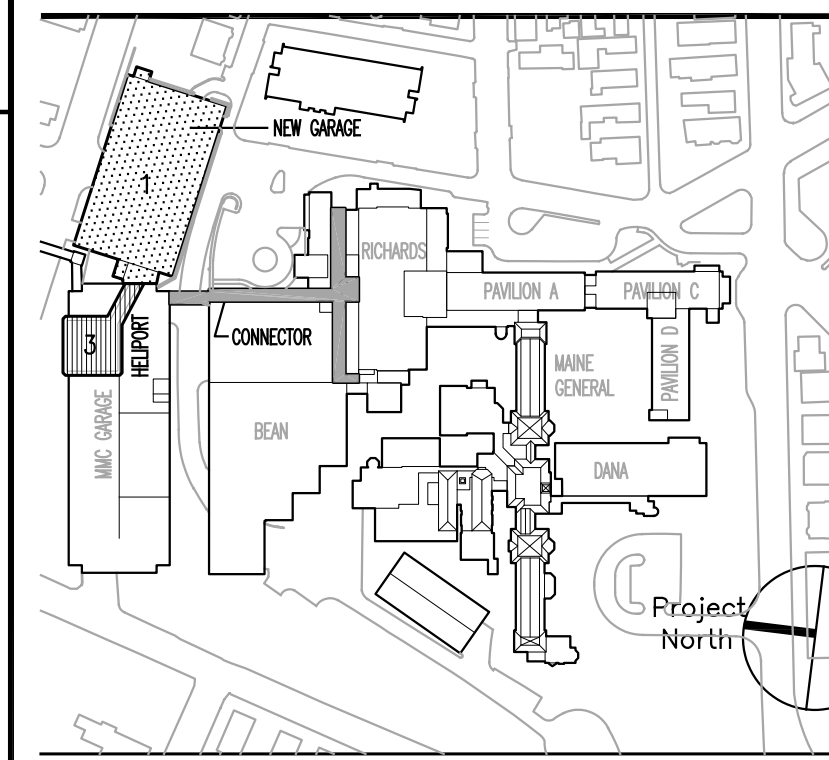
- 11) [Symbol] INDICATES VIEW WINDOW TYPE. REFER TO SHEET A830 FOR DETAILS.

FINISH NOTE:
REFER TO THE ROOM FINISH SCHEDULE AND ARCHITECTURAL SPECIFICATIONS FOR INFORMATION REGARDING THE SPECIFIED FINISH.

- SYMBOL KEY
- [Symbol] FLOORCOVERING DISTRIB. SYMB. MATERIAL CODE
 - [Symbol] PAINT DISTRIBUTION SYMBOL PAINT COLOR CODE
 - [Symbol] WALLCOVERING DISTRIB. SYMB. MATERIAL CODE
 - [Symbol] REDUCER/TRANSITION STRIP
 - [Symbol] THRESHOLD (REFER TO ARCHITECTURAL SPECIFICATIONS FOR MATERIAL)
 - [Symbol] DENOTES COLOR ON ALL WALLS OF ROOM
 - [Symbol] DENOTES EXTENT OF COLOR/MATERIAL
 - [Symbol] DENOTES COLOR/MATERIAL ABOVE
 - [Symbol] DENOTES COLOR/MATERIAL BELOW

MARK	ISSUE DATE	DESCRIPTION
PERMIT	09/18/04	PERMIT SET
BD	08/28/04	BD SET

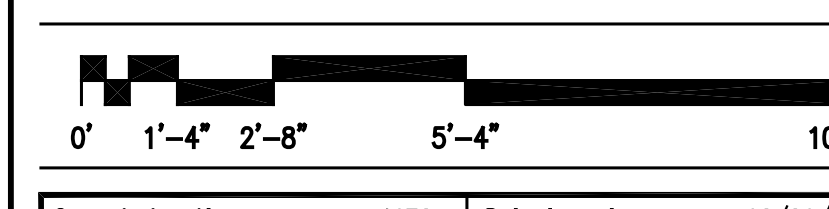
Issue Log



TRO
ARCHITECTURAL PLANNING ENGINEERING INTERIOR
The Ritchie Organization
80 Bridge Street
Newton, MA 02459-1617-989-94

Maine Medical Center
Pkg F - Garage / Vault / Conn / Heliport
Portland, ME MMC Project No. 21845

Drawing Title
INTERIOR ELEVATIONS
NO. 1



Commission No.	4678	Date Issued	08/28/04
Scale	3/8" = 1'-0"	Sheet Number	PKG-F
Drawn By	PC	Approved By	JW
File Name	4678a700.dwg		A700
Copyright © 2004	The Ritchie Organization		