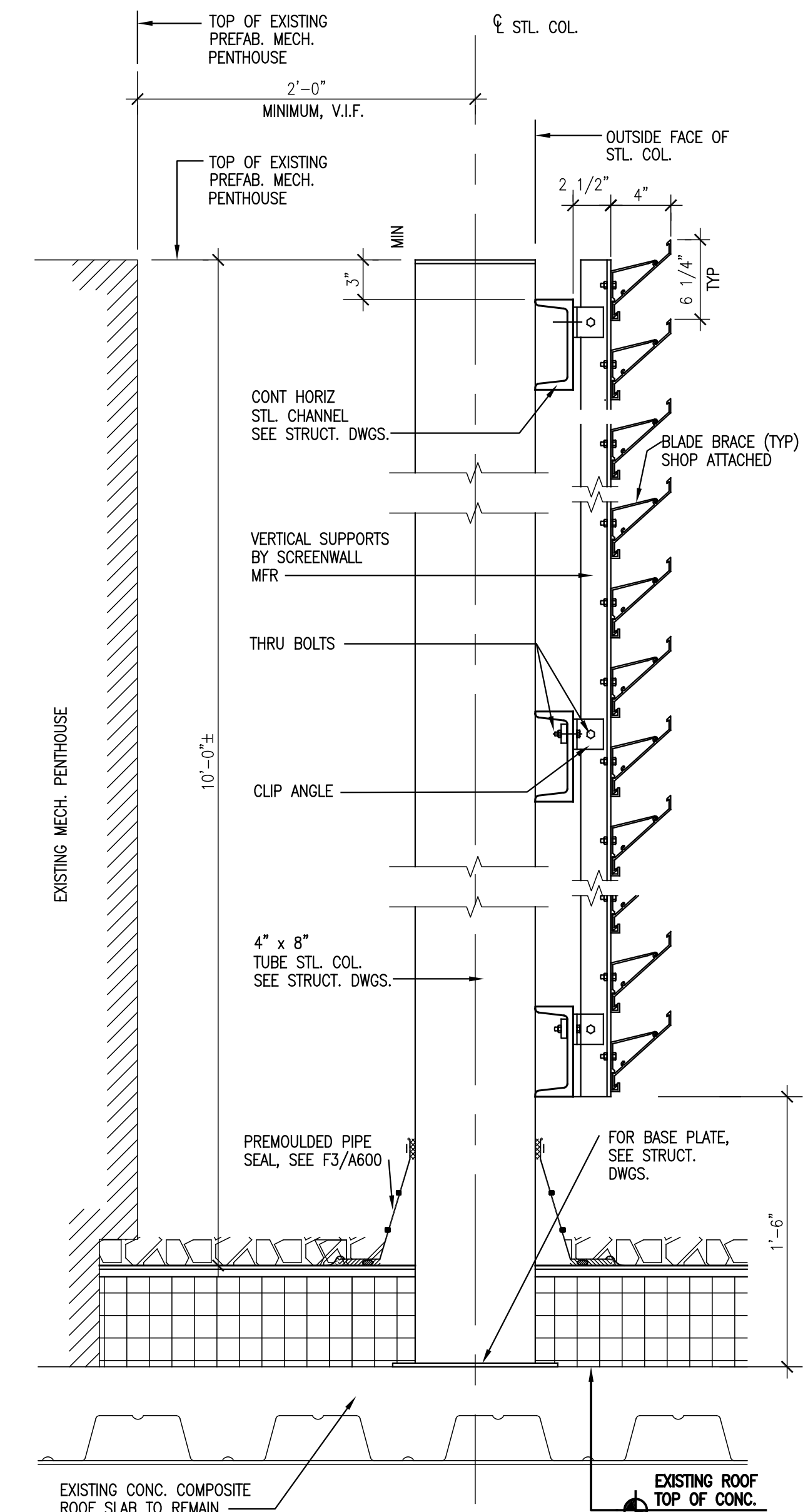
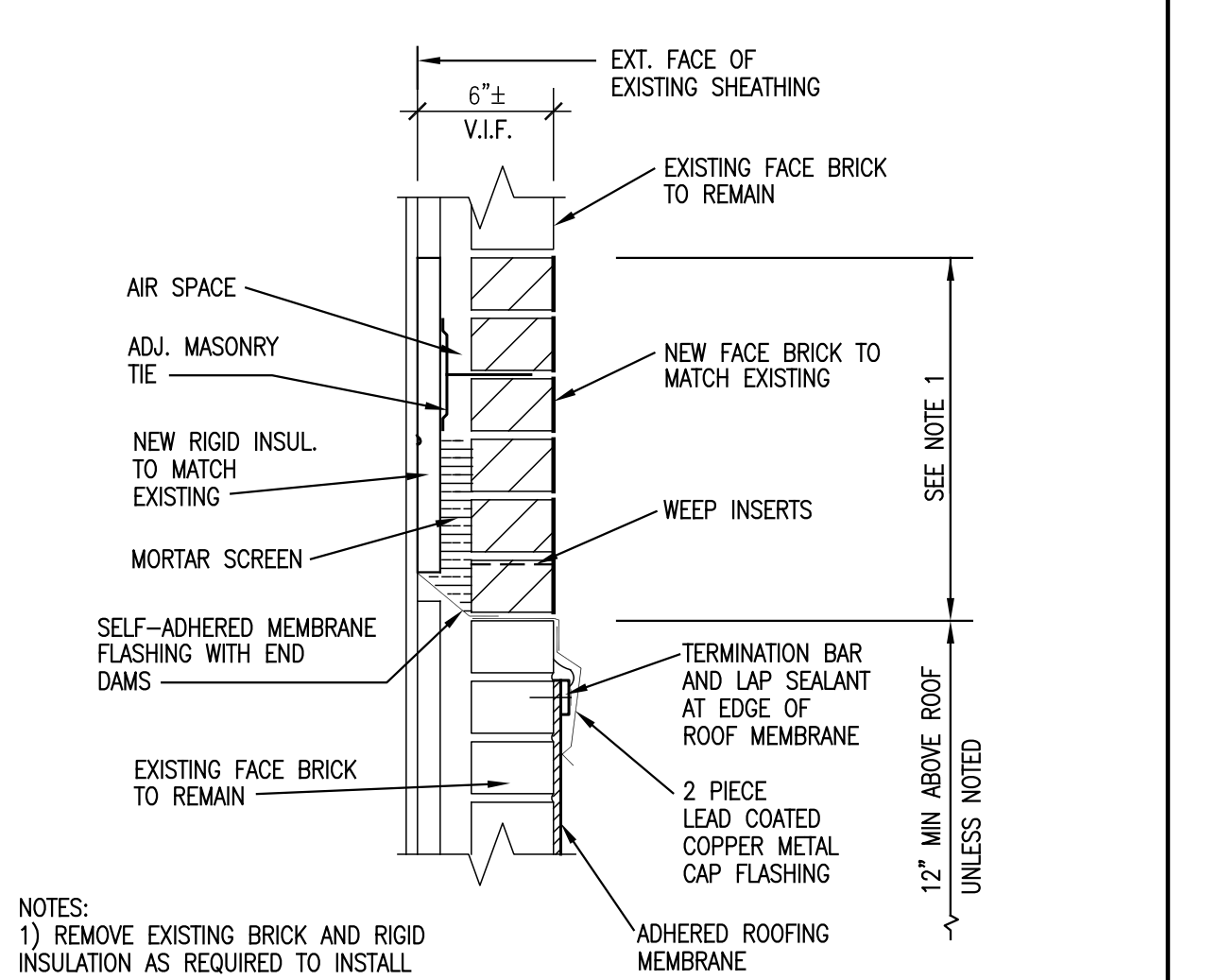


**A1 PLAN OF SCREENWALL**  
SCALE: 1/4" = 1'-0"

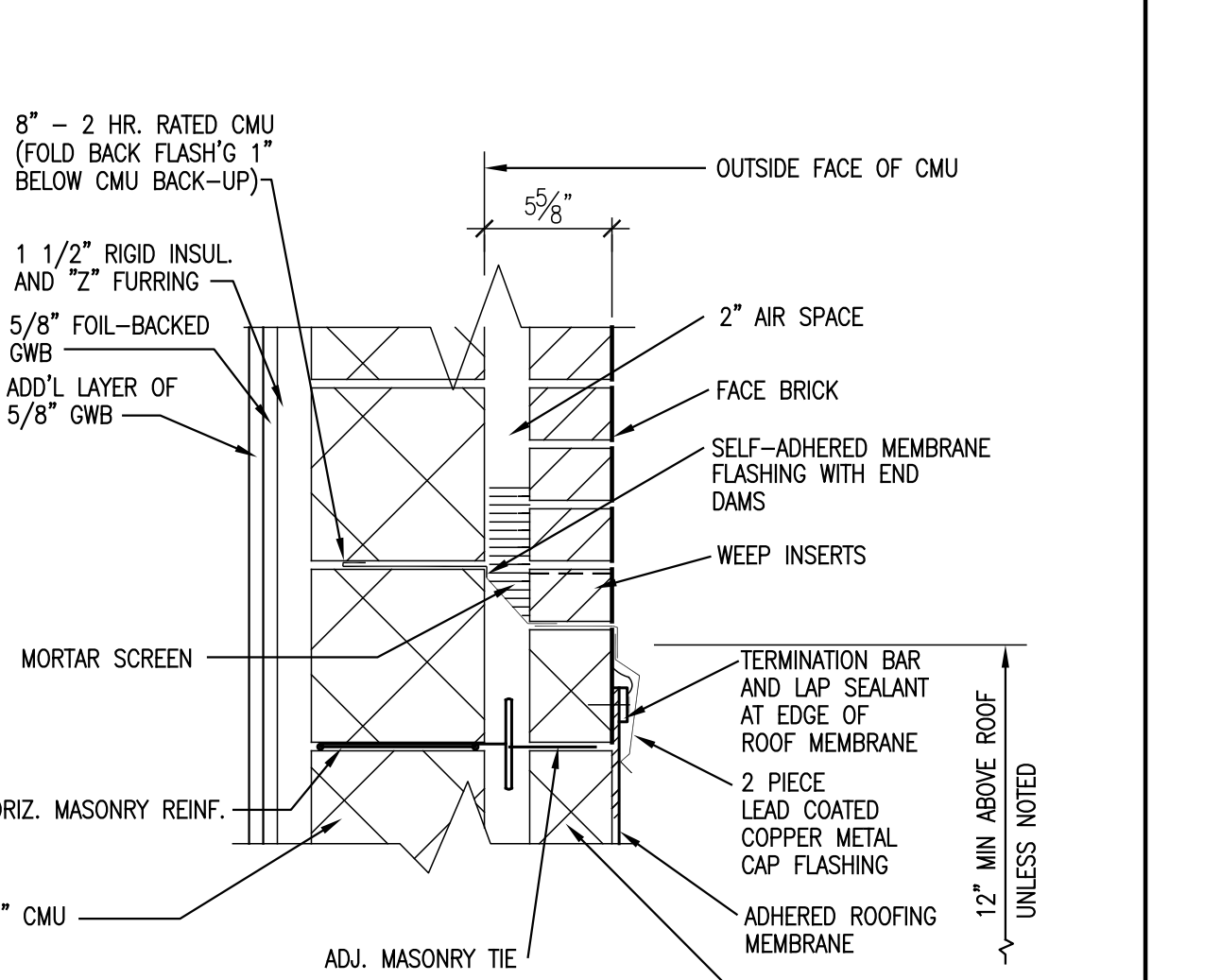


**A2 THRU WALL FLASHING DETAIL AT NEW CONST.**  
SCALE: 1 1/2" = 1'-0"

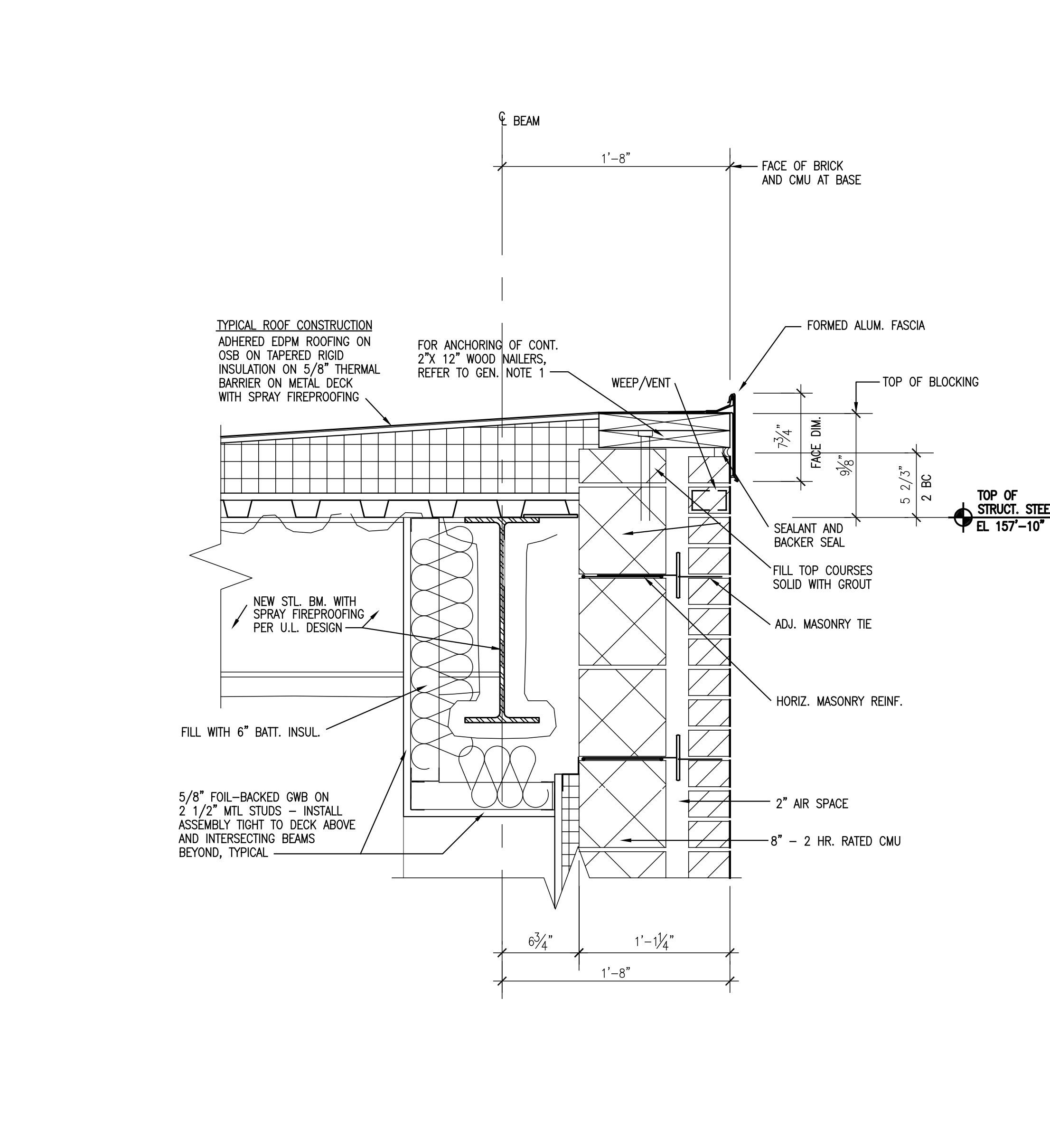
**B2 SECTION THRU SCREENWALL**  
SCALE: 1 1/2" = 1'-0"



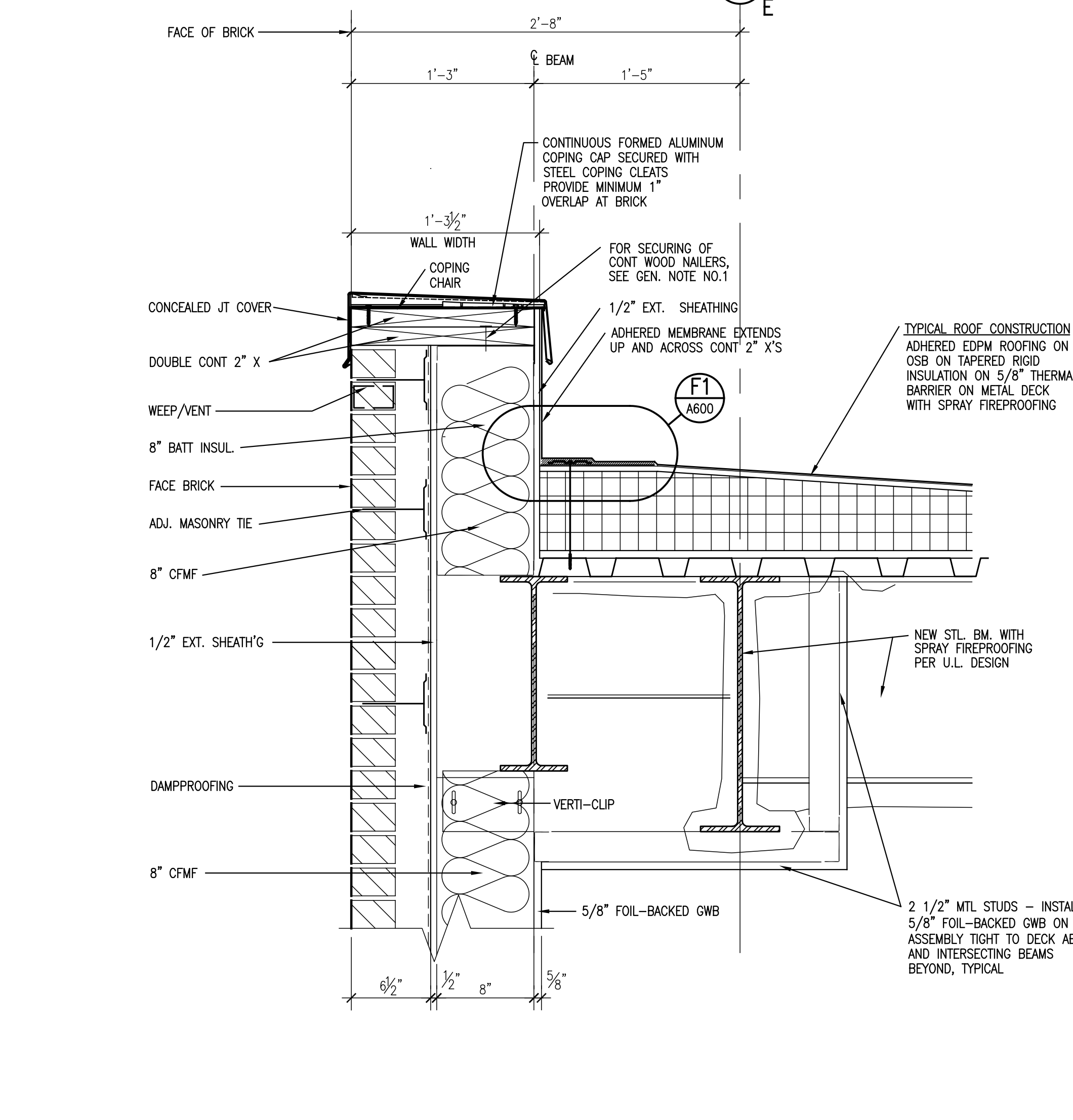
**C1 THRU WALL FLASHING DETAIL AT EXISTING**  
SCALE: 1 1/2" = 1'-0"



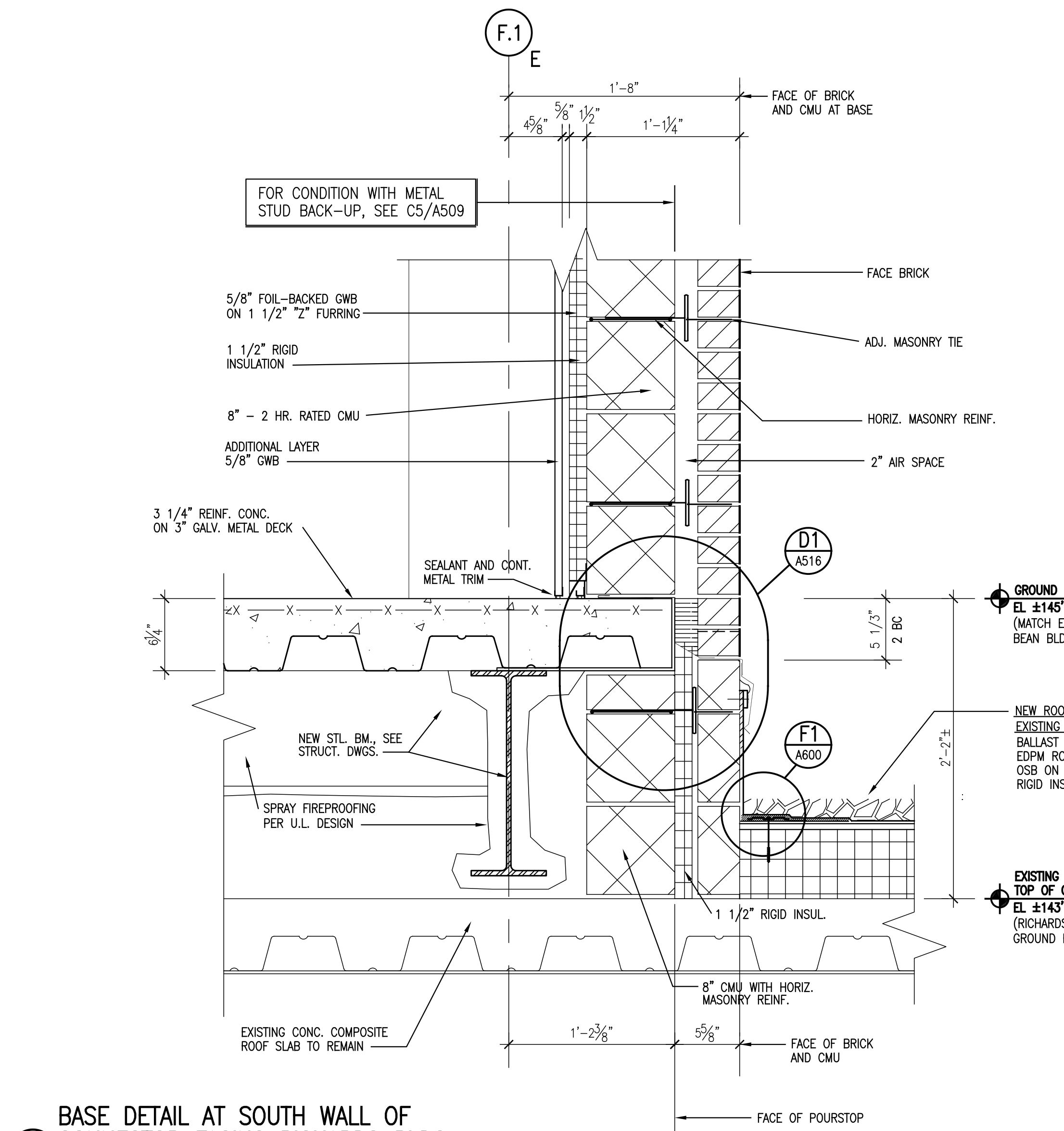
**D1 THRU WALL FLASHING DETAIL**  
SCALE: 1 1/2" = 1'-0"



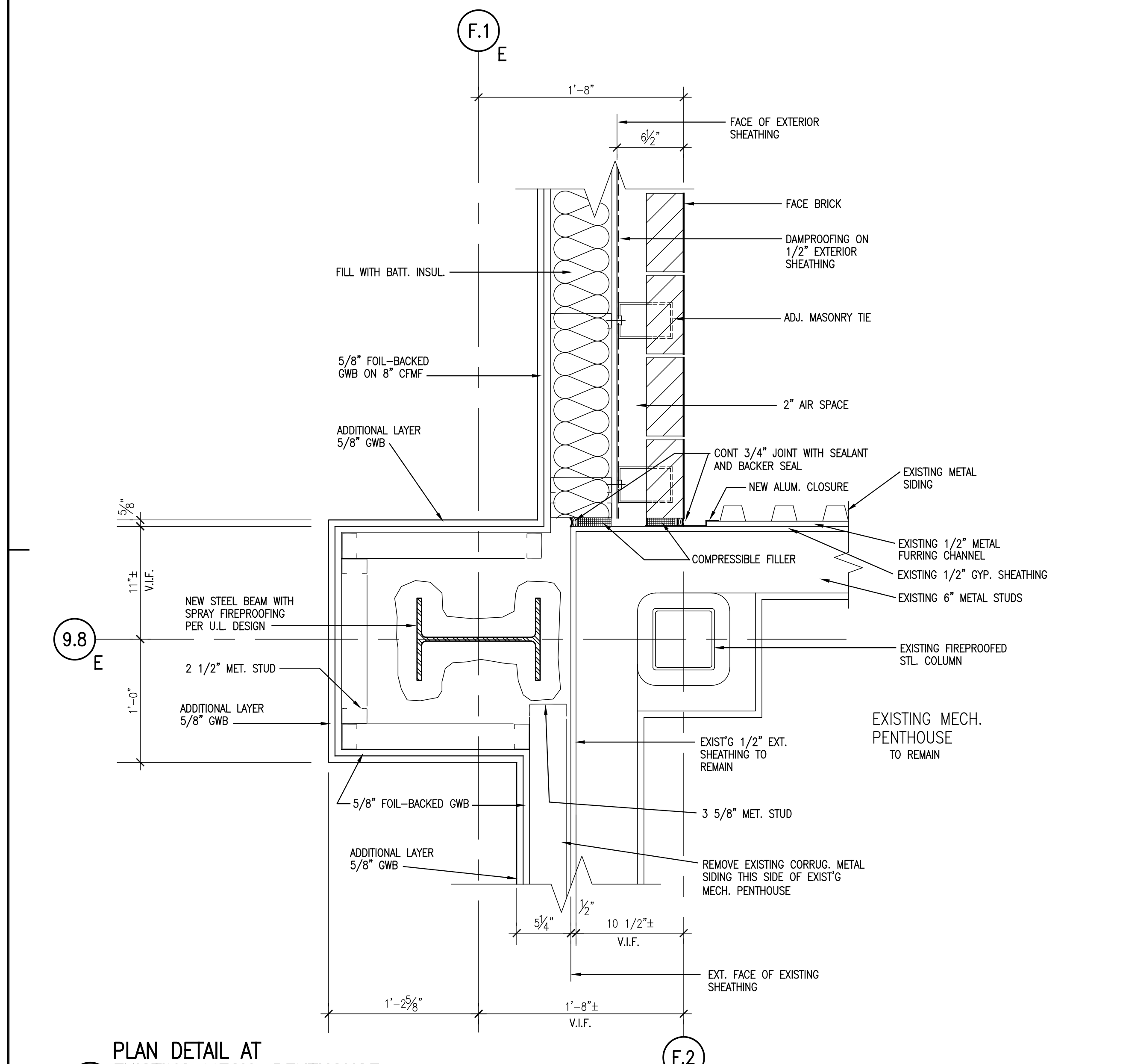
**E2 DETAIL AT FORMED ALUM. FASCIA/FACE BRICK/CMU**  
SCALE: 1 1/2" = 1'-0"



**E6 PARAPET DETAIL WITH METAL COPING**  
SCALE: 1 1/2" = 1'-0"

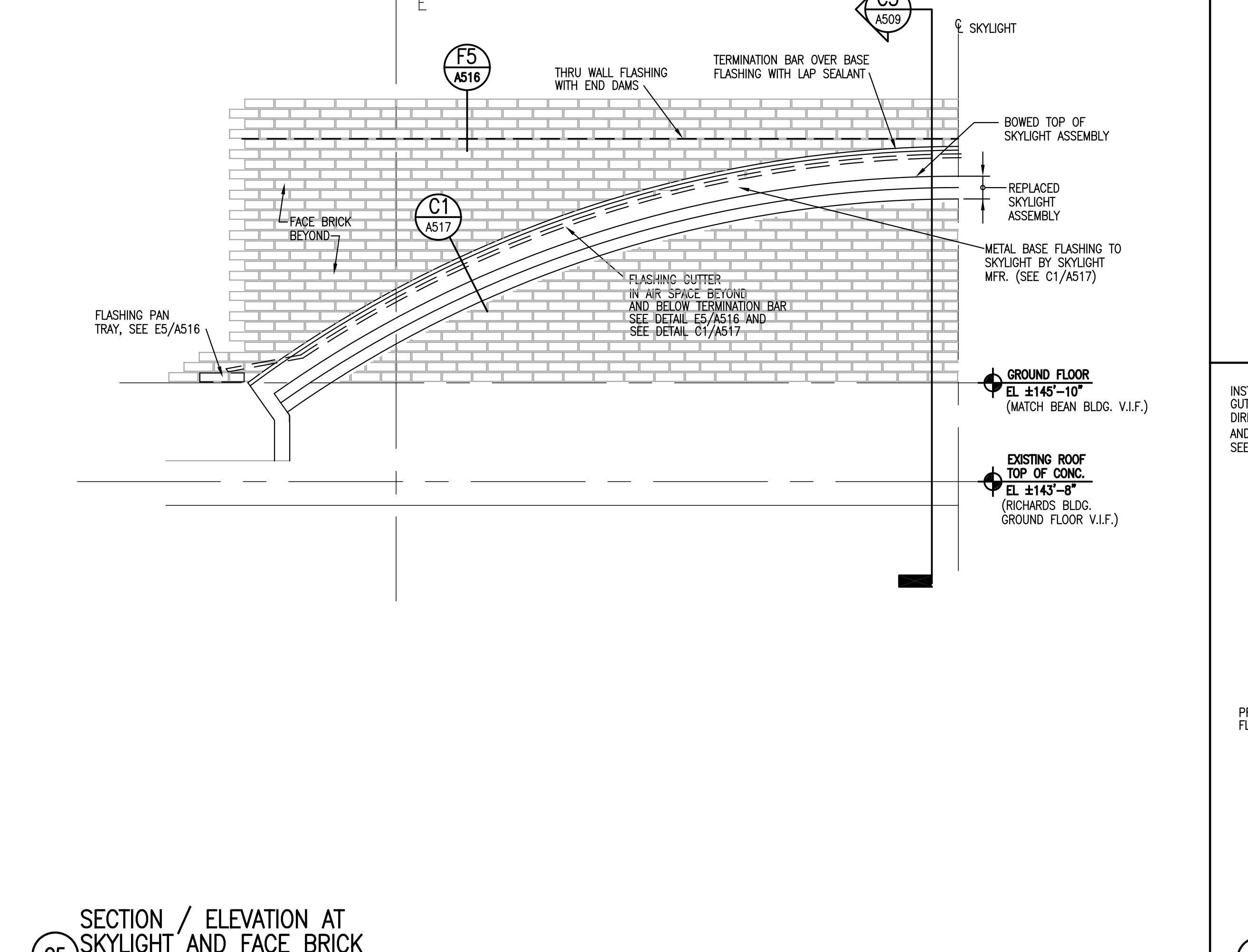


**E4 BASE DETAIL AT SOUTH WALL OF CONNECTOR FACING RICHARDS BLDG.**  
SCALE: 1 1/2" = 1'-0"

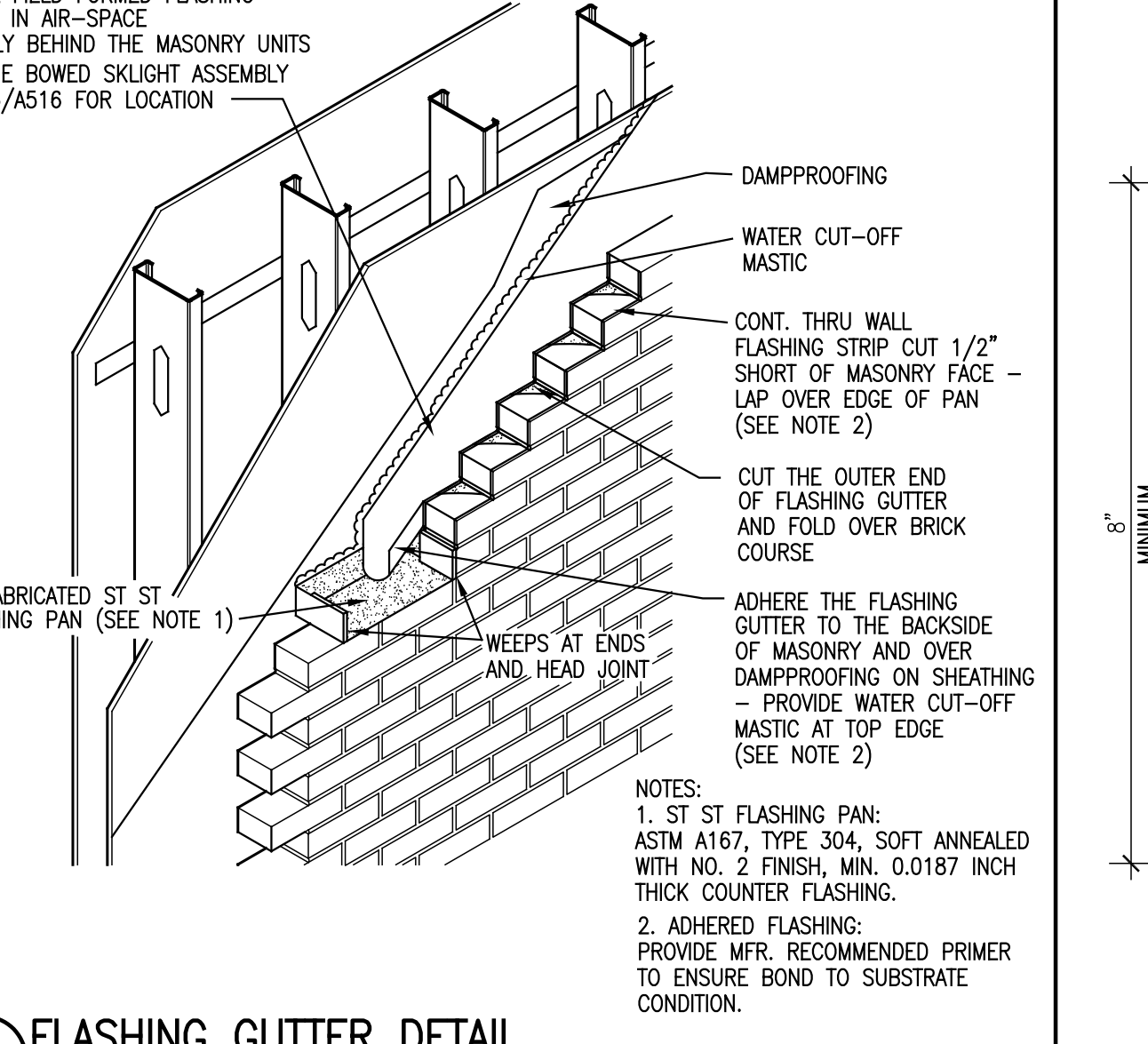


**F.1 PLAN DETAIL AT EXISTING MECH. PENTHOUSE**  
SCALE: 1 1/2" = 1'-0"

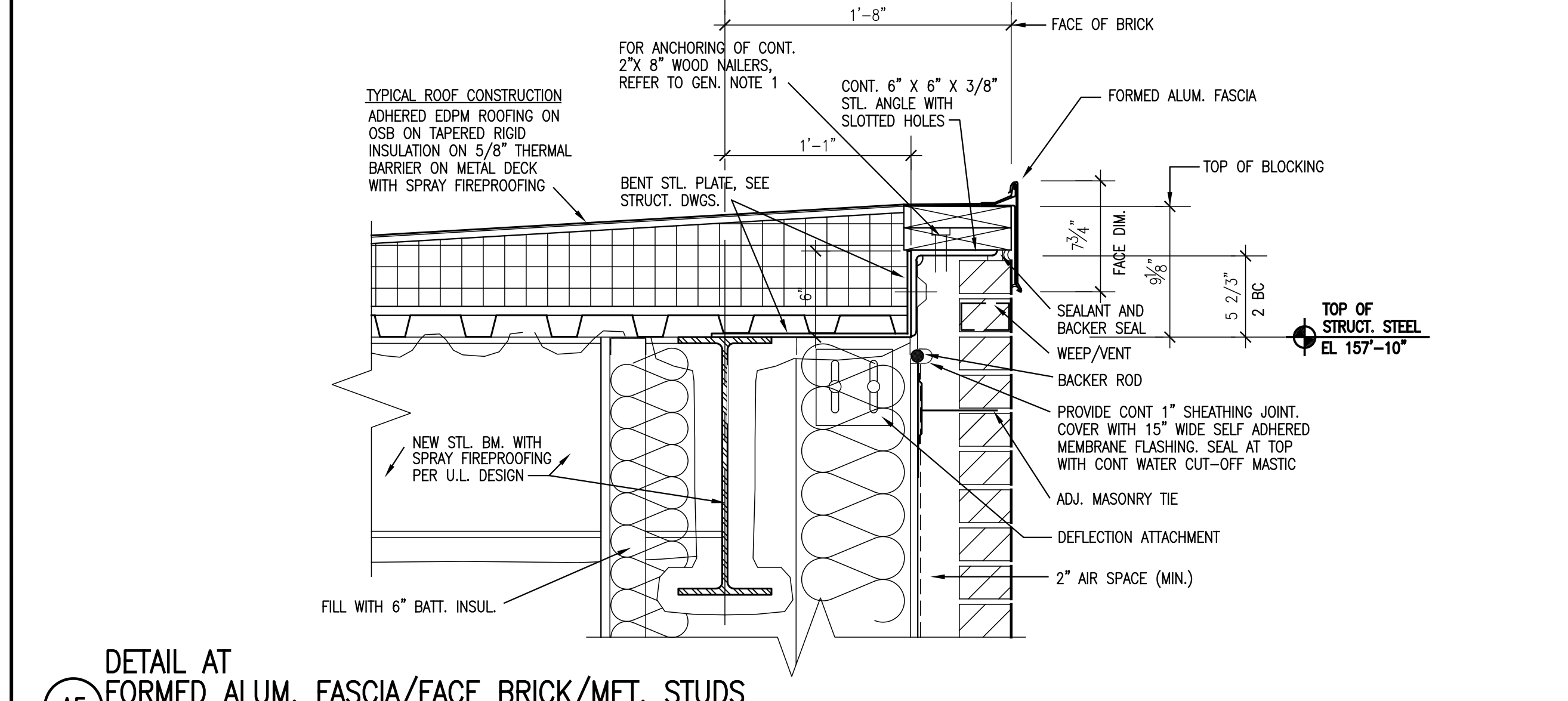
**F.2 SECTION / ELEVATION AT SKYLIGHT AND FACE BRICK**  
SCALE: 1/2" = 1'-0"



**F5 FLASHING GUTTER DETAIL**  
SCALE: 3/4" = 1'-0"



**F6 SECTION AT TYP. THROUGH WALL FLASHING**  
SCALE: 6" = 1'-0"



**F7 SECTION AT TYP. THROUGH WALL FLASHING**  
SCALE: 6" = 1'-0"

**General Notes:**  
1. SECURING PERIMETER WOOD NAILERS ONTO STEEL PLATES OR STEEL ANGLES: AT SINGLE CONT. 2" X NAILERS, PROVIDE 5/4" GALV. ANCHORS WITH GALV. WASHERS COUNTERSUNK AT 4" OC MAXIMUM. DOUBLE ANCHORS WITHIN 8" FROM CORNERS TO 2" OC MAX. AT MULTIPLE 2" X NAILERS, SECURE BOTTOM NAILER PER ABOVE AND SECURE ADDITIONAL LAYER(S) OF 2" X NAILERS WITH GALV. NAILS OR CSK LAG SCREWS IN STAGGERED ROWS. EACH FASTENER SHALL BE MAX. 2" OC. WITHIN 8" FROM CORNERS DOUBLE THE FASTENERS - SPACING EACH ROW AT 12" OC MAX. MIN. PENETRATION INTO BOTTOM NAILER SHALL BE 1 1/4".  
SECURING PERIMETER WOOD NAILERS ONTO COMPOSITE CONCRETE DECK: AT SINGLE CONT. 2" X NAILERS, PROVIDE 1/2" ST STEEL MASONRY ANCHOR BOLT SYSTEM WITH ST. 3" WASHERS, CSK AT 4"-0" OC MAX. WITH 3 1/2" MIN. PENETRATION INTO CONCRETE DECK. DOUBLE ANCHORS WITHIN 8"-0" FROM CORNERS TO 2"-0" OC SPACING MAX. AT MULTIPLE 2" X NAILERS, SECURE BOTTOM NAILER PER ABOVE AND SECURE ADDITIONAL LAYER(S) OF 2" X NAILERS WITH GALV. NAILS OR CSK LAG SCREWS IN STAGGERED ROWS. EACH FASTENER SHALL BE MAX. 2" OC. WITHIN 8" FROM CORNERS DOUBLE THE FASTENERS - SPACING EACH ROW AT 12" OC MAX. MIN. PENETRATION INTO NAILER BELOW SHALL BE 1 1/4".  
SECURING PERIMETER WOOD NAILERS ONTO CMU WALL: AT SINGLE CONT. 2" X NAILERS, PROVIDE 2 ROWS OF STAGGERED #10 GALV. WASHERS, CSK AT 4"-0" OC MAX. WITH 8" MIN. PENETRATION INTO CMU WALL JOINTS FILLED WITH GROUT. DOUBLE ANCHORS WITHIN 8"-0" FROM CORNERS TO 2"-0" OC SPACING MAX. AT MULTIPLE 2" X NAILERS, SECURE BOTTOM NAILER PER ABOVE AND SECURE ADDITIONAL LAYER(S) OF 2" X NAILERS WITH GALV. NAILS OR CSK LAG SCREWS IN STAGGERED ROWS. EACH FASTENER MAX. 2" OC. WITHIN 8" FROM CORNERS, DOUBLE THE FASTENERS - SPACING EACH ROW AT 12" OC MAX. MIN. PENETRATION INTO NAILER BELOW SHALL BE 1 1/4".  
SECURING PERIMETER WOOD NAILERS ONTO METAL DECKING OR COUD FORMED METAL FRAMING RUNNERS: AT SINGLE CONT. 2" X NAILERS, PROVIDE 2 ROWS OF STAGGERED #10 GALV. WASHERS WITH 5/8" GALV. NAILS, AT 2"-0" OC MAX. WITH 1" MIN. PENETRATION THROUGH THE TOP OF METAL DECK FLUTES OR RUNNER. DOUBLE SCREWS WITHIN 8"-0" FROM CORNERS TO 1"-0" OC MAX. AT MULTIPLE 2" X NAILERS, SECURE BOTTOM NAILER PER ABOVE AND SECURE ADDITIONAL LAYER(S) OF 2" X NAILERS WITH GALV. NAILS OR CSK LAG SCREWS IN STAGGERED ROWS. EACH FASTENER MAX. 2" OC. WITHIN 8" FROM CORNERS, DOUBLE THE FASTENERS - SPACING EACH ROW AT 1"-0" OC MAX. MINIMUM PENETRATION INTO NAILER BELOW SHALL BE 1 1/4".

2. MASONRY WALL ANCHORS AND TIES: SPACE ANCHORS 16 INCHES HORIZONTALLY AND VERTICALLY SO THAT TIES MAY BE ATTACHED AT EVERY SIXTH COURSE OF BRICK TO REDUCE HORIZONTAL ANCHOR SPACING TO 12 INCHES WHERE CFM SPACING IS REDUCED TO 12 INCH CENTERS WITHIN 14 FEET OF EXTERIOR CORNERS. INSTALL ADDITIONAL TIES AT APPROXIMATELY 8 INCHES OC AT JAMBS OF WALL OPENINGS AND NEAR CORNERS OF STRUCTURE. IN NO CASE SHALL THE SPACING OF ANCHORS EXCEED ONE ANCHOR FOR EACH 1.75 SQ. FT. OF WALL AREA.

MARK	ISSUE DATE	DESCRIPTION
PERMIT	08/18/04	PERMIT SET
BD	08/28/04	BD SET

Issue Log



**Maine Medical Center**  
Pkg F - Garage / Vault / Conn / Heliport  
Portland, ME MMC Project No. 21845

**CONSTRUCTION DETAILS**  
NO. 5

Commission No.	4678	Date Issued	08/28/04
Scale	AS NOTED	Sheet Number	PKG-F
Drawn By	RAC	Approved By	BC
File Name	\\pdp1\pdp1\4678\AS16.dwg		
Copyright © 2004	The Maine Organization		