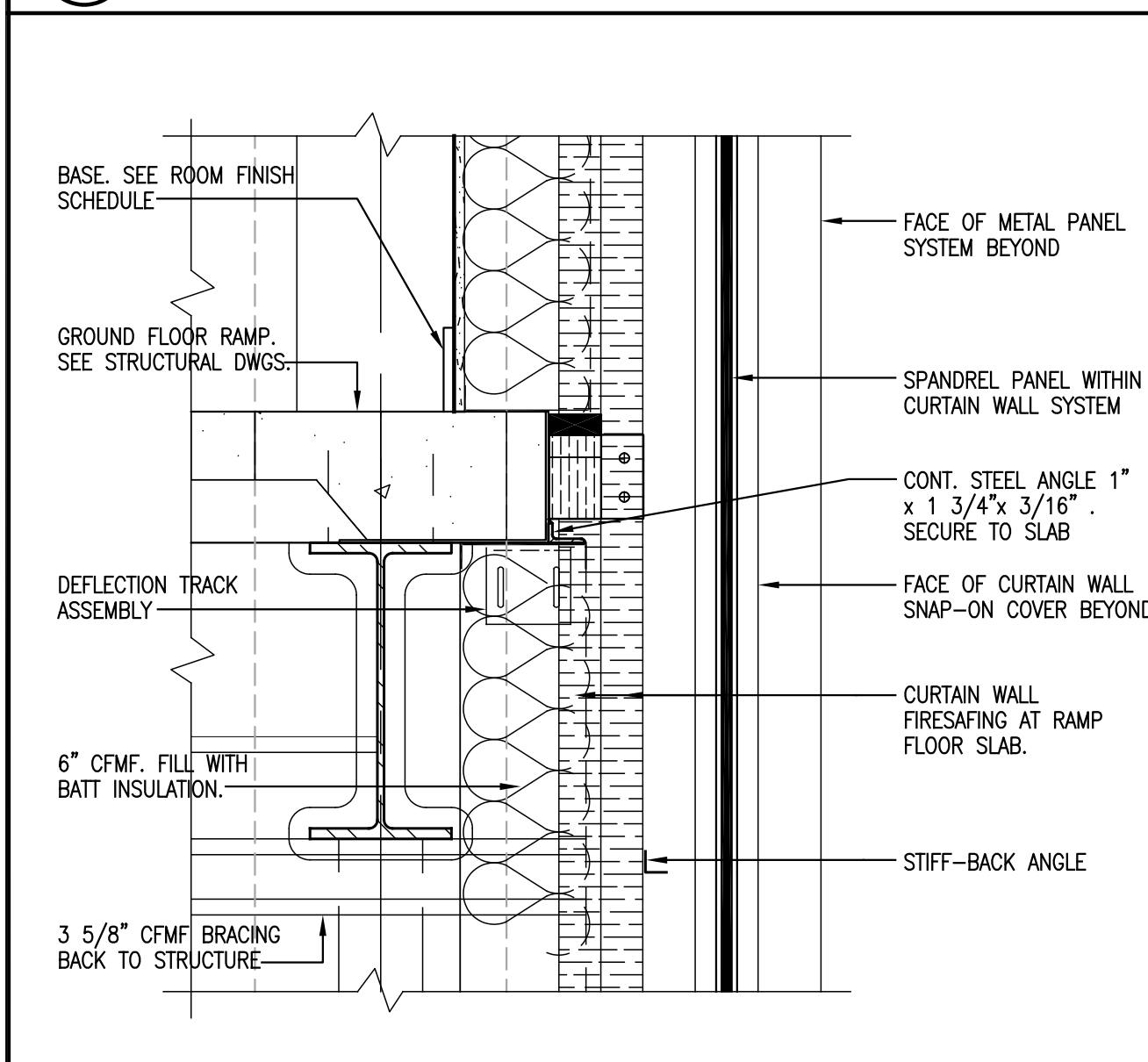
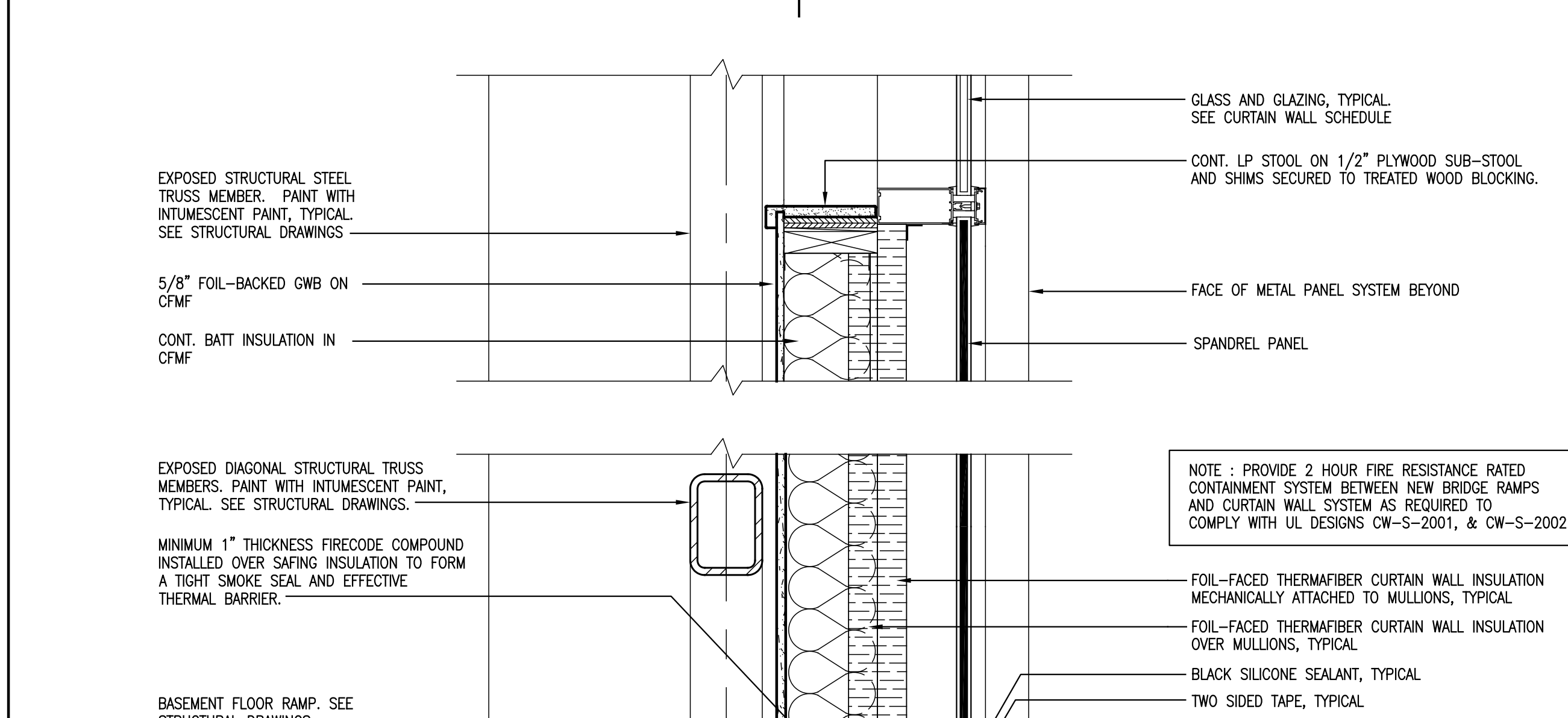


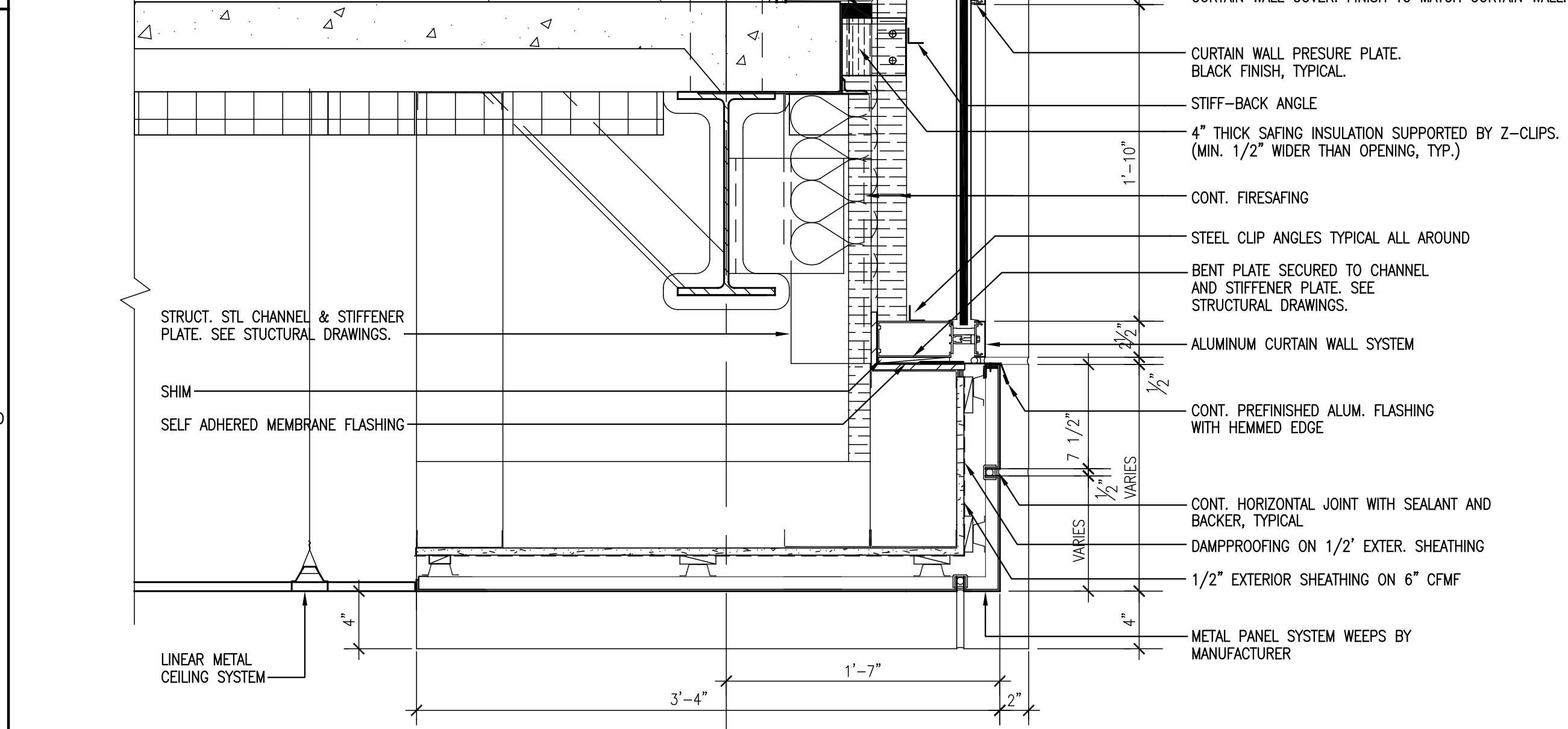
A1 TYP. SECTION AT TOP OF EXTER. WALL
SCALE: 1 1/2" = 1'-0"



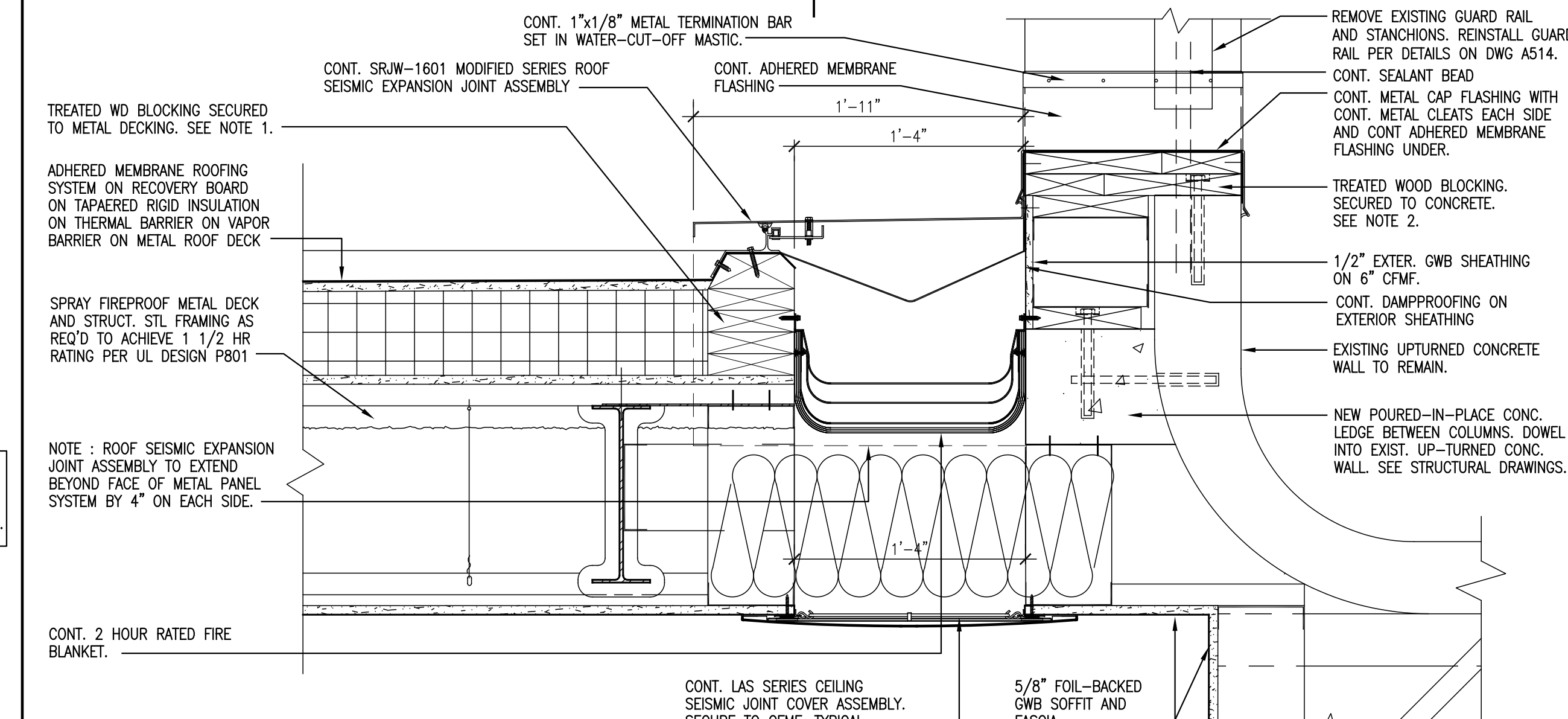
A2 TYP. SECTION AT EDGE OF RAMP
SCALE: 1 1/2" = 1'-0"



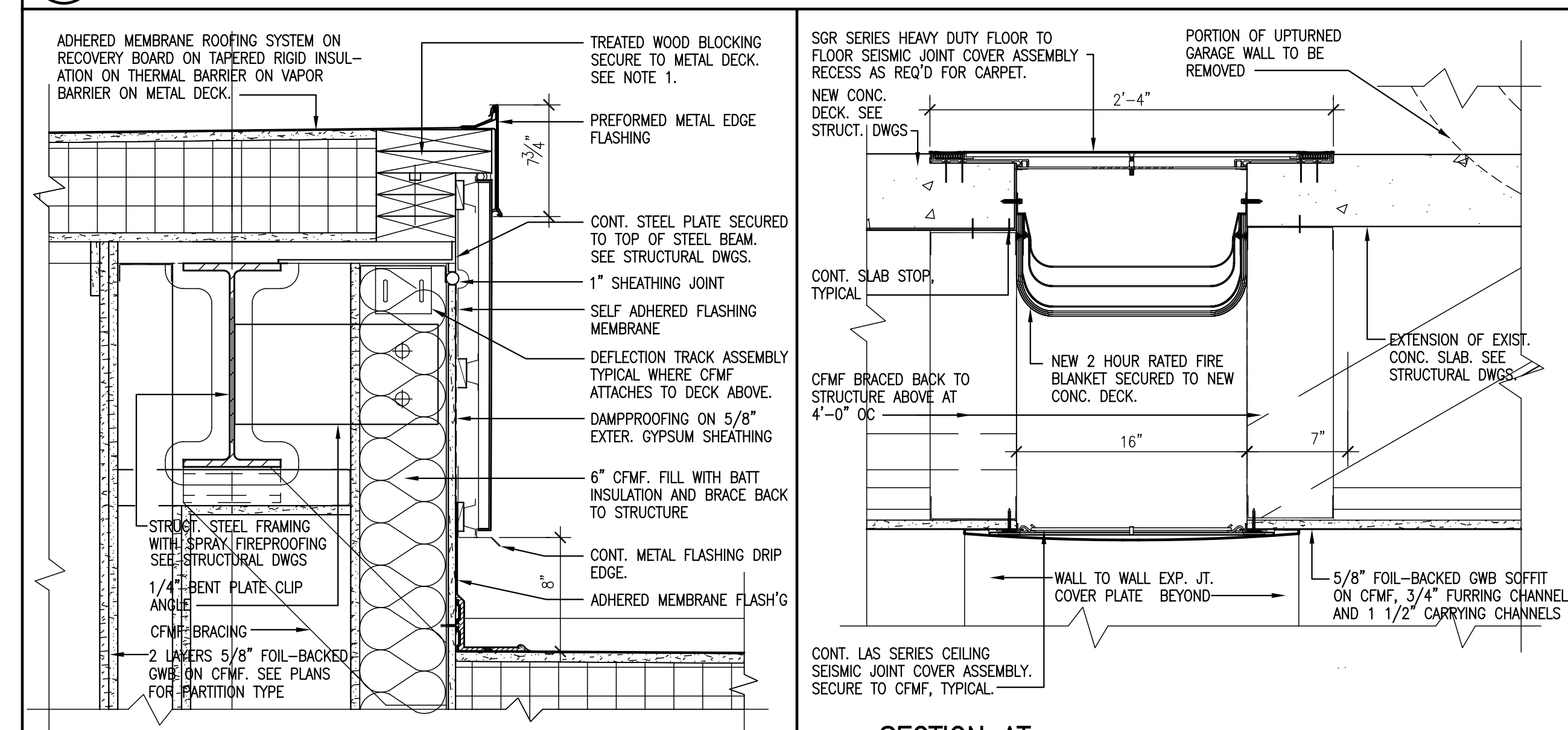
B2 TYP. SECTION AT BOTTOM OF EXTERIOR WALL
SCALE: 1 1/2" = 1'-0"



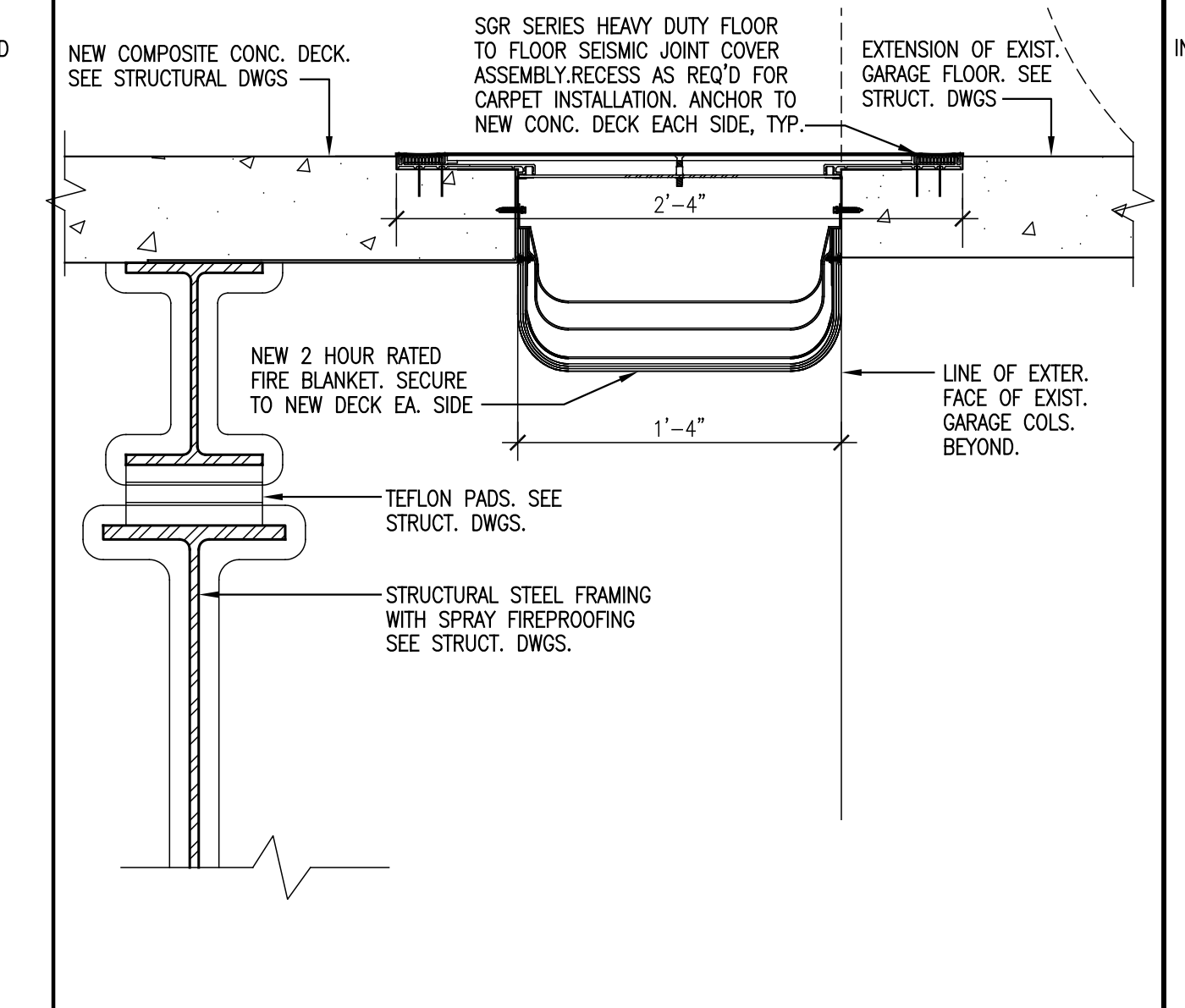
D1 SECTION AT BRIDGE ROOF SEISMIC JOINT
SCALE: 1 1/2" = 1'-0"



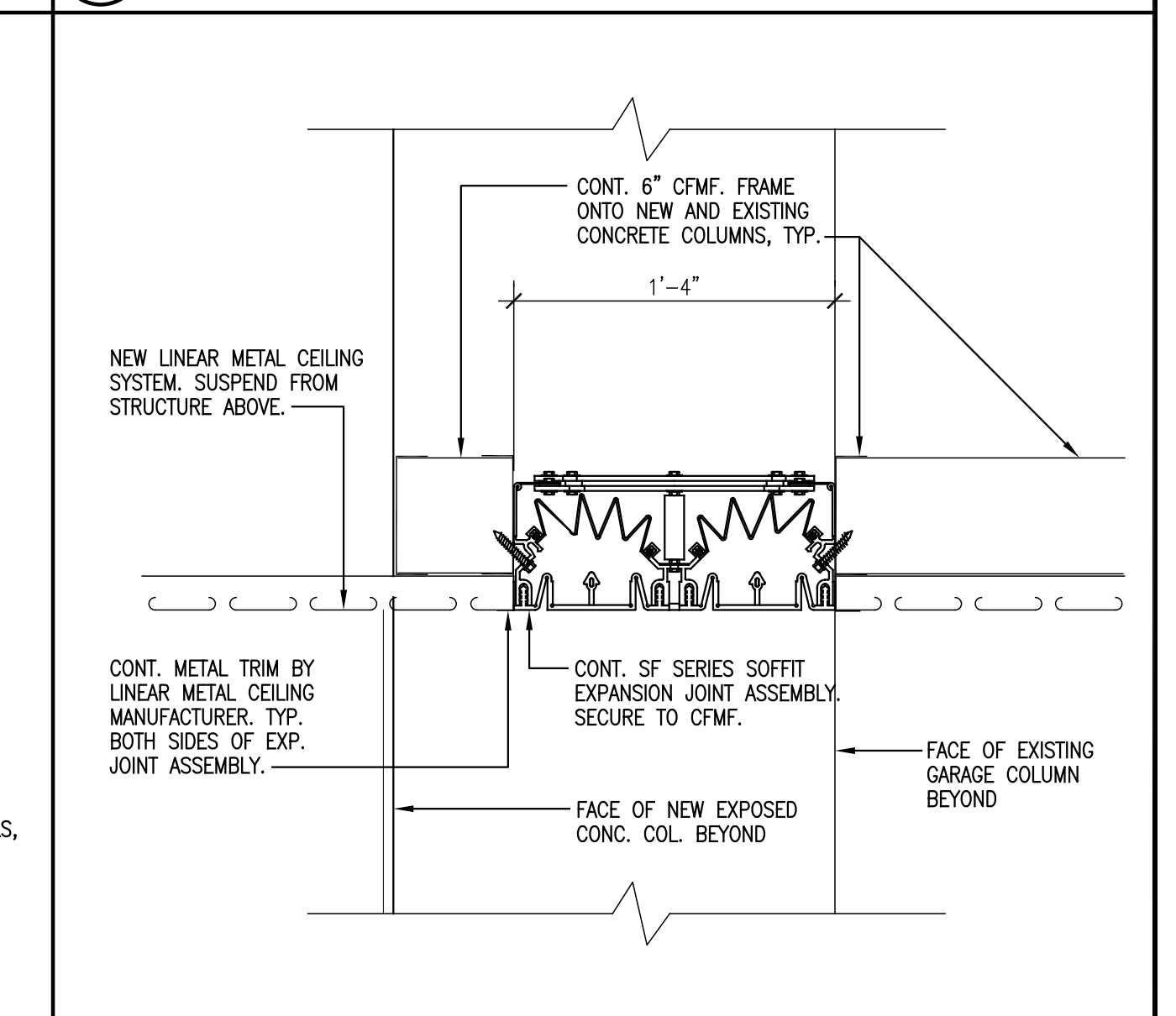
D2 SECTION AT BRIDGE AND CONNECTOR ROOF
SCALE: 1 1/2" = 1'-0"



E2 SECTION AT FLOOR AND CEILING SEISMIC JOINT
SCALE: 1 1/2" = 1'-0"

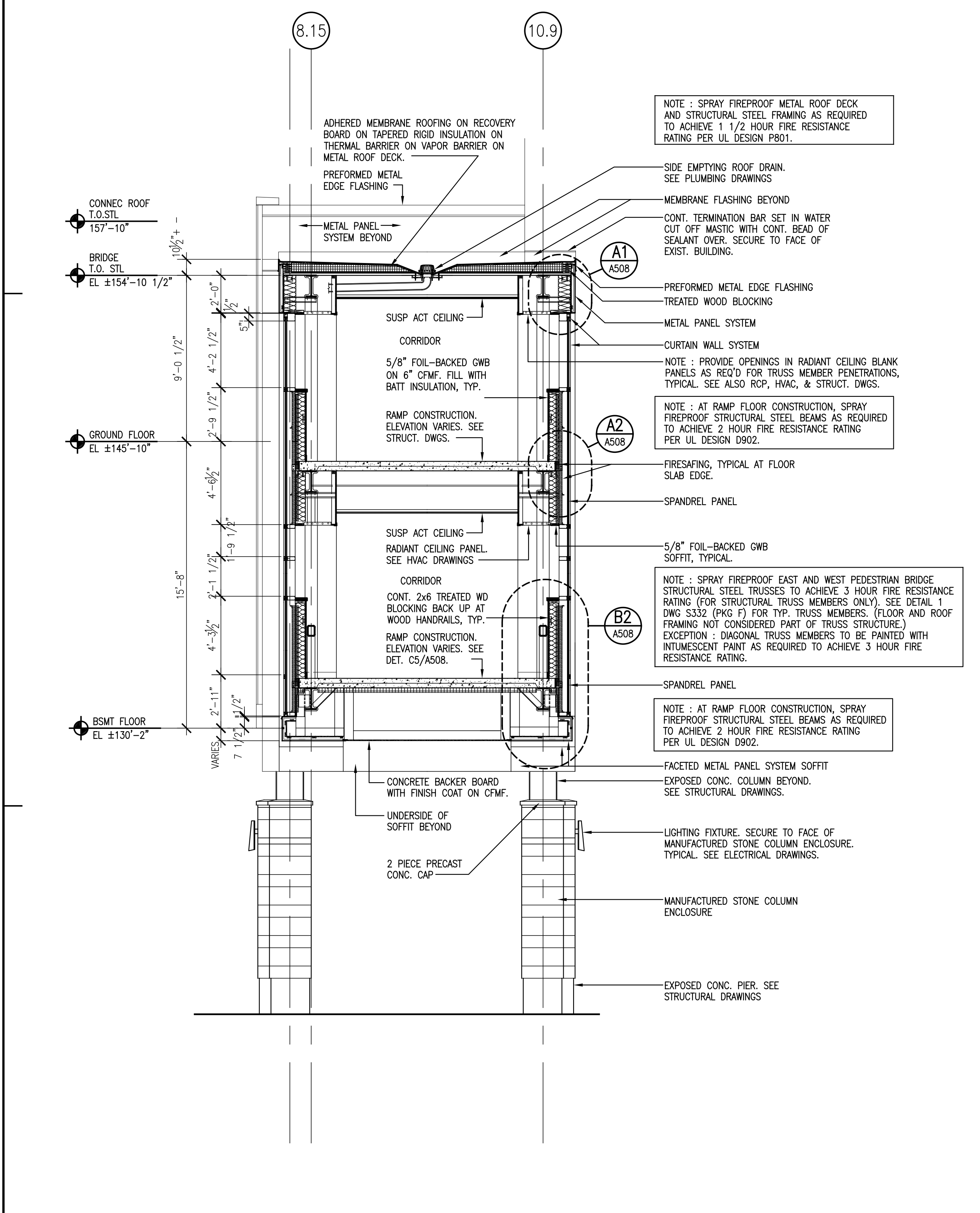


F1 TYP. SECTION AT FLOOR SEISMIC JOINT COVER
SCALE: 1 1/2" = 1'-0"

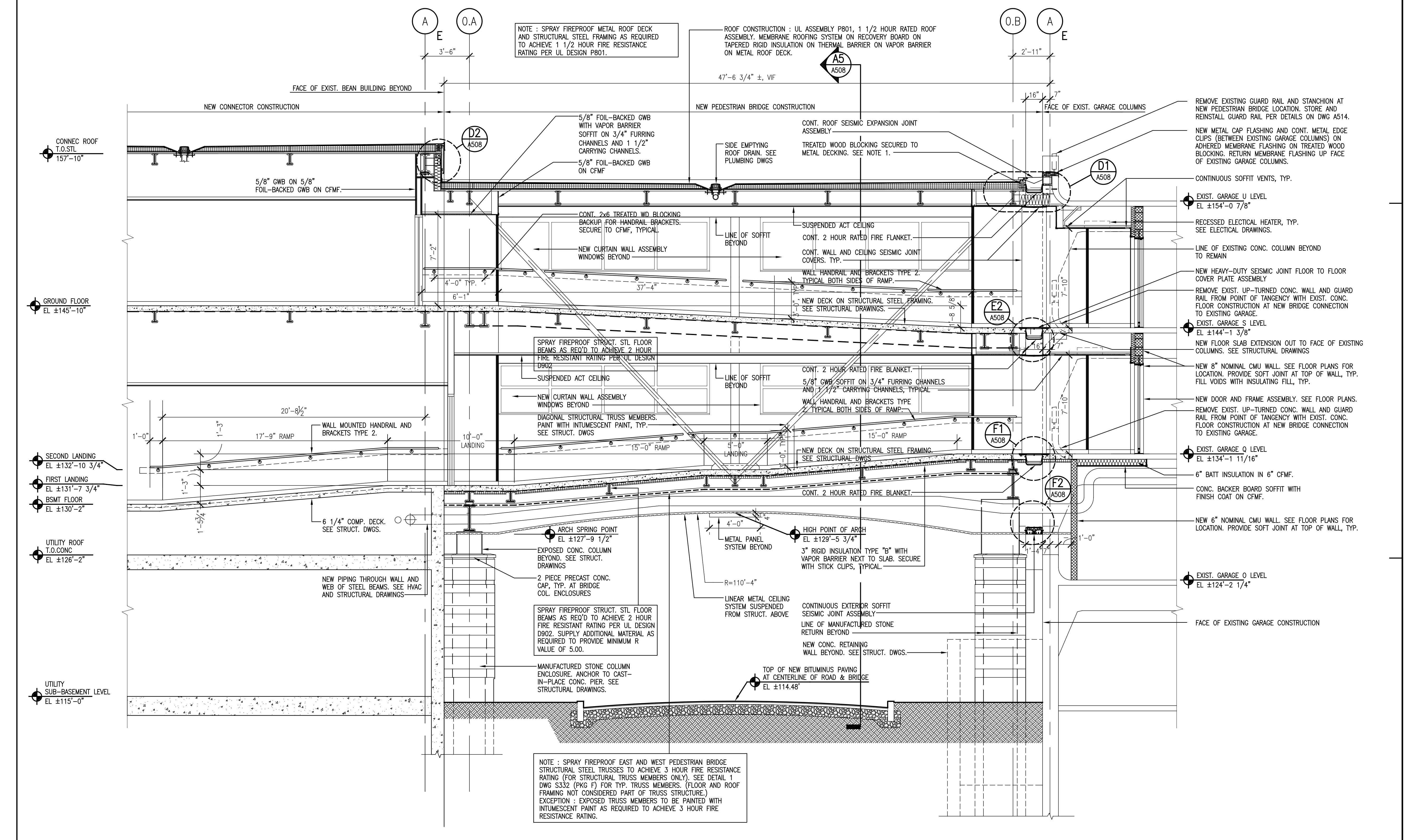


F2 SECTION AT EXTERIOR SOFFIT SEISMIC JOINT
SCALE: 1 1/2" = 1'-0"

General Notes:
 1. SECURING OF PERIMETER WOOD NAILED ONTO METAL DECKING: AT SINGLE CONT. 2" NAILED, PROVIDE 2 ROWS OF STAGGERED 10 GA. SCREWS WITH 5/8" GAU. WASHERS, AT 2'-0" OC MAX. WITH 1" MIN. PENETRATION THROUGH THE TOP OF METAL DECK FLUTES, DOUBLE STAGGERED WITHIN 18" FROM CORN TO 1'-0" OC MAX. AT MULTIPLE 2" NAILED, SECURE BOTTOM NAILER PER A1 AND SECURE ADDITIONAL LAYERS OF 2" NAILER WITH GALV. NAILS OR CSK. SCREWS IN STAGGERED ROWS, EACH FASTENER MAX. 2'-0" OC. WITHIN 8'-0" FROM CORNERS, DOUBLE THE FASTENERS-SPACING EACH ROW AT 1'-0" OC. MIN. PENETRATION INTO NAILER BELOW SHALL BE 1 1/4".

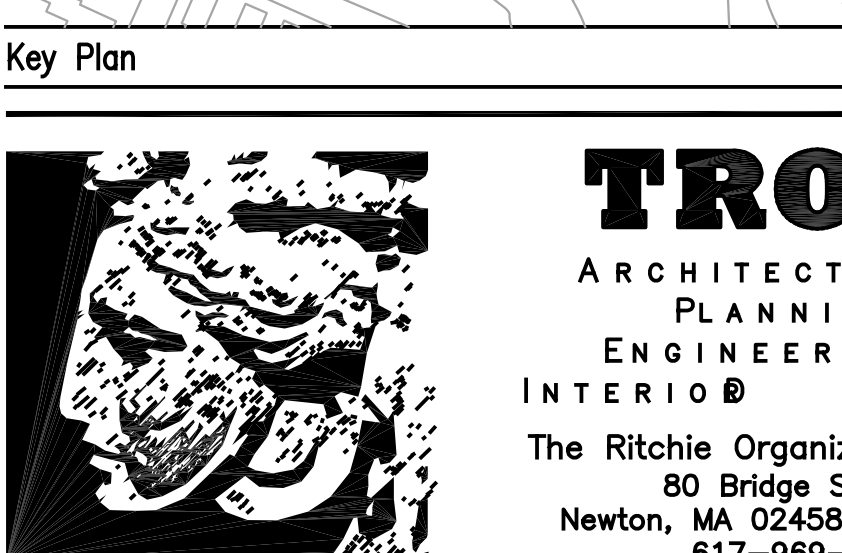
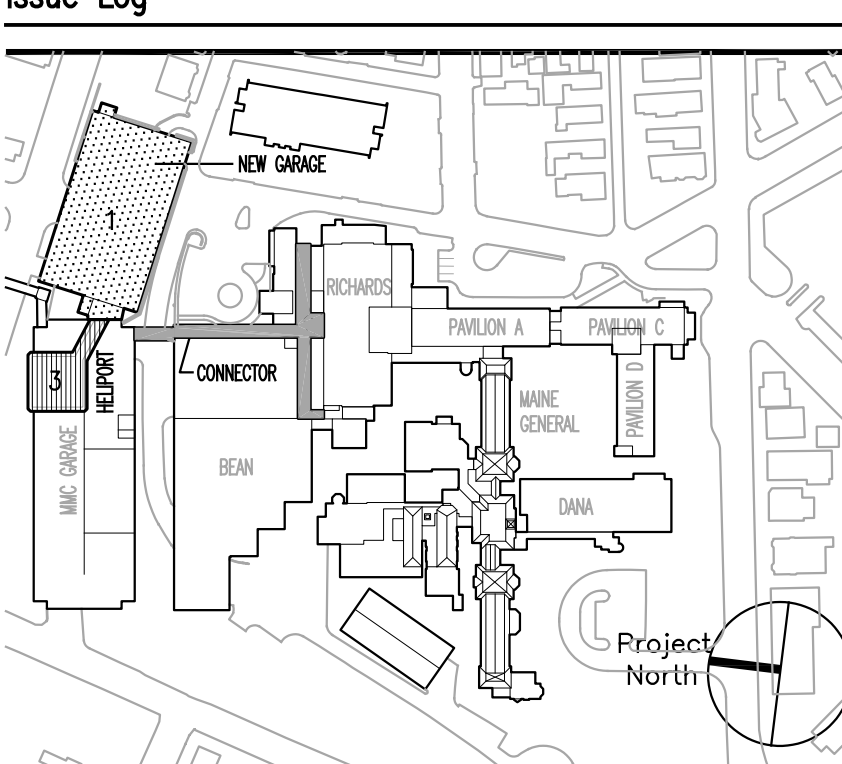


A5 TRANSVERSE SECTION AT PEDESTRIAN BRIDGE
SCALE: 1/4" = 1'-0"



C5 LONGITUDINAL SECTION AT PEDESTRIAN BRIDGE
SCALE: 1/4" = 1'-0"

MARK	ISSUE DATE	DESCRIPTION
PERMIT	08/18/04	PERMIT SET
BD	08/26/04	BD SET



Maine Medical Center
Pkg F - Garage / Vault / Conn / Heliport
Portland, ME MMC Project No. 21845

CONNECTOR BRIDGE BUILDING SECTIONS AND DETAILS

Revision No.	4678	Date Issued	08/26/04
Scale	AS NOTED	Sheet Number	PKG-F
Drawn By	DS/JV	Approved By	JV/BS/FS
File Name	4678A508.dwg		A508