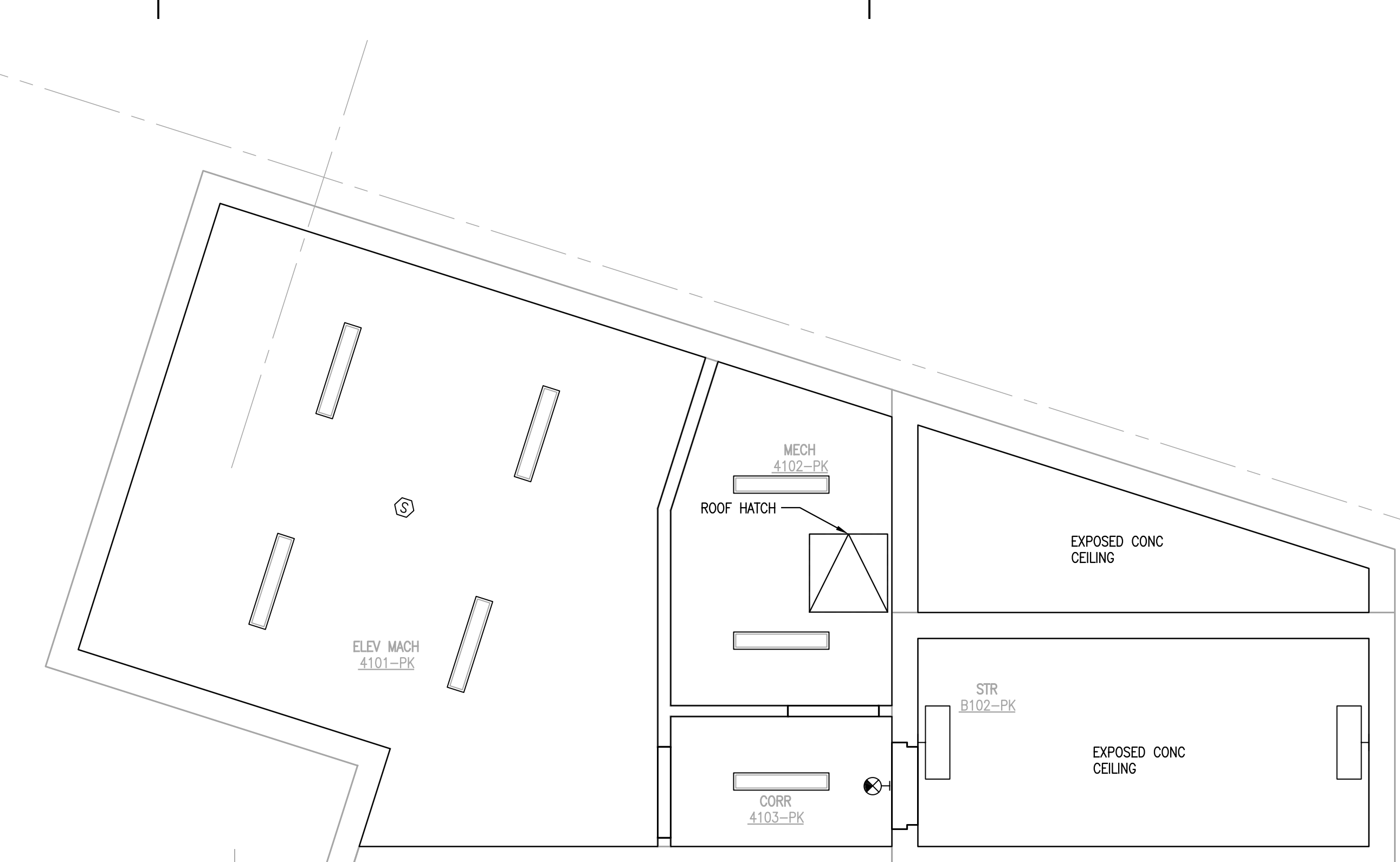
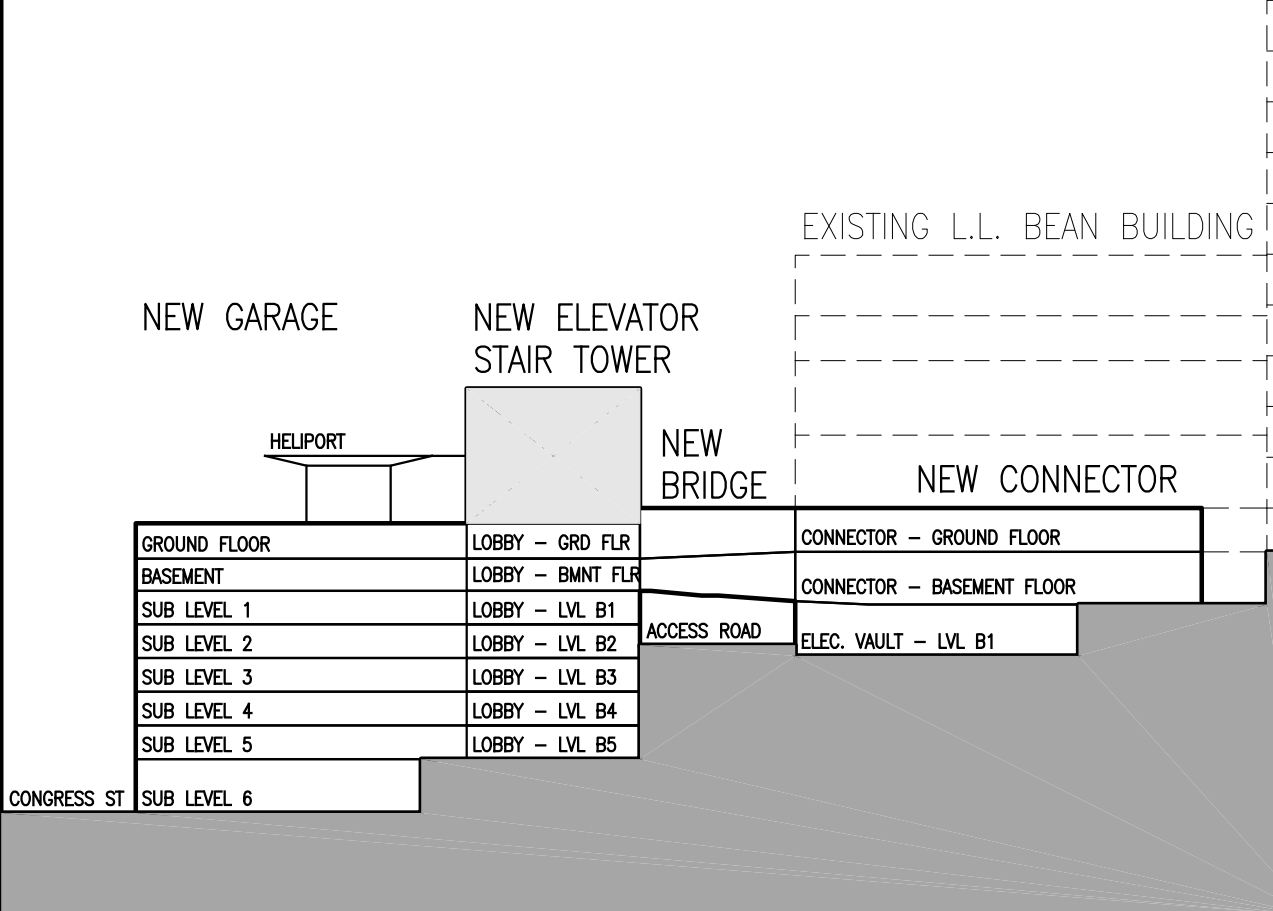
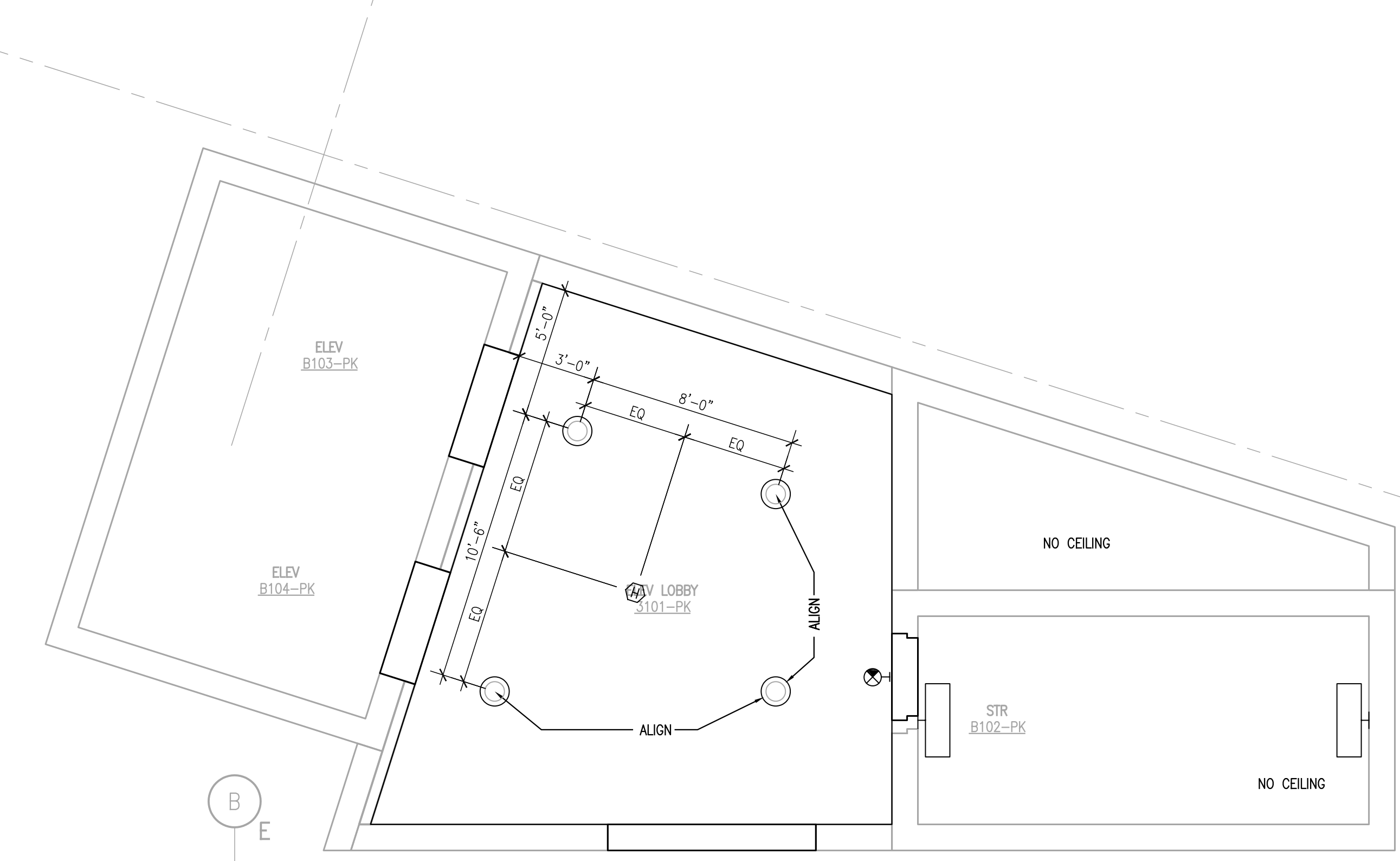


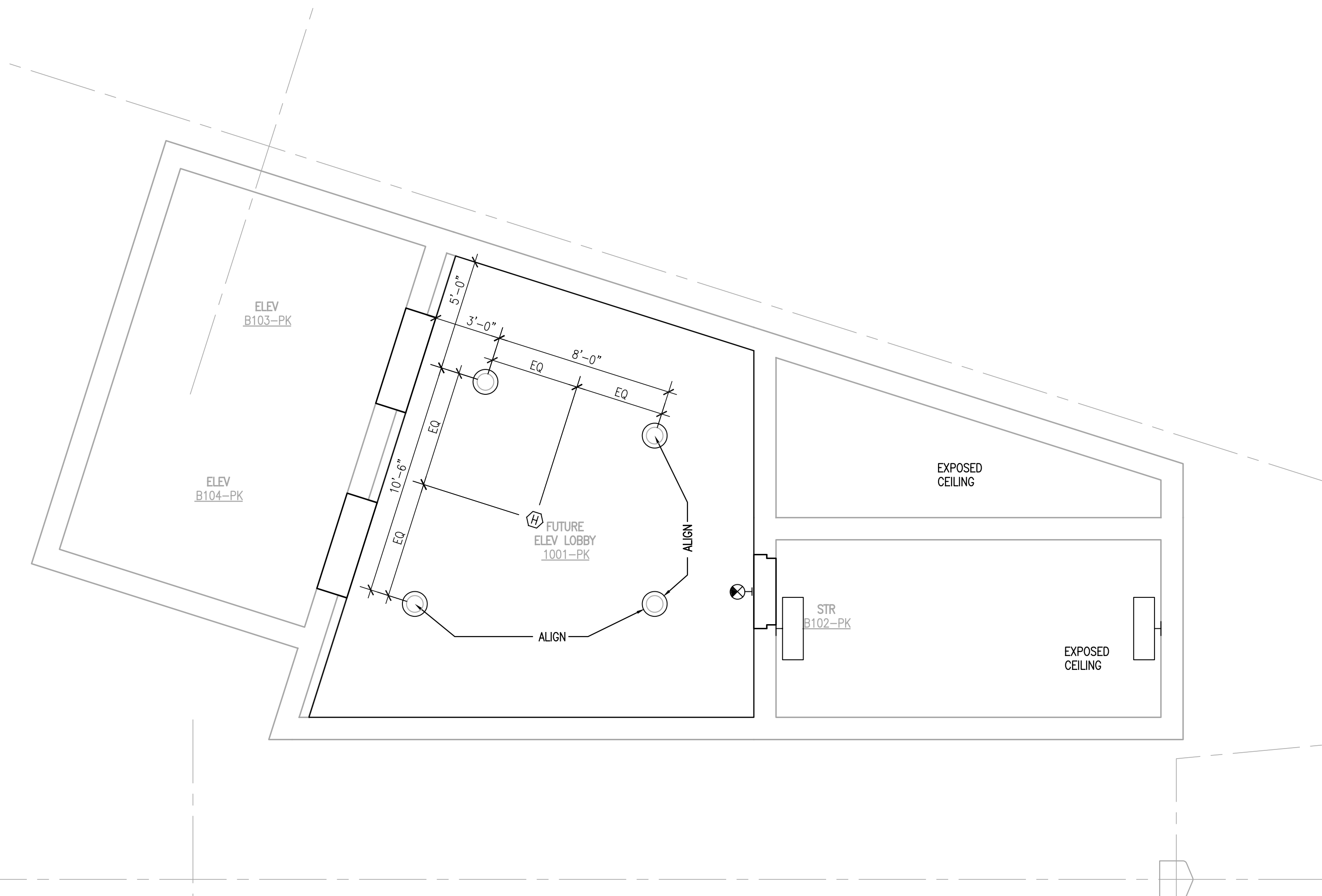
**SECTIONAL KEY**



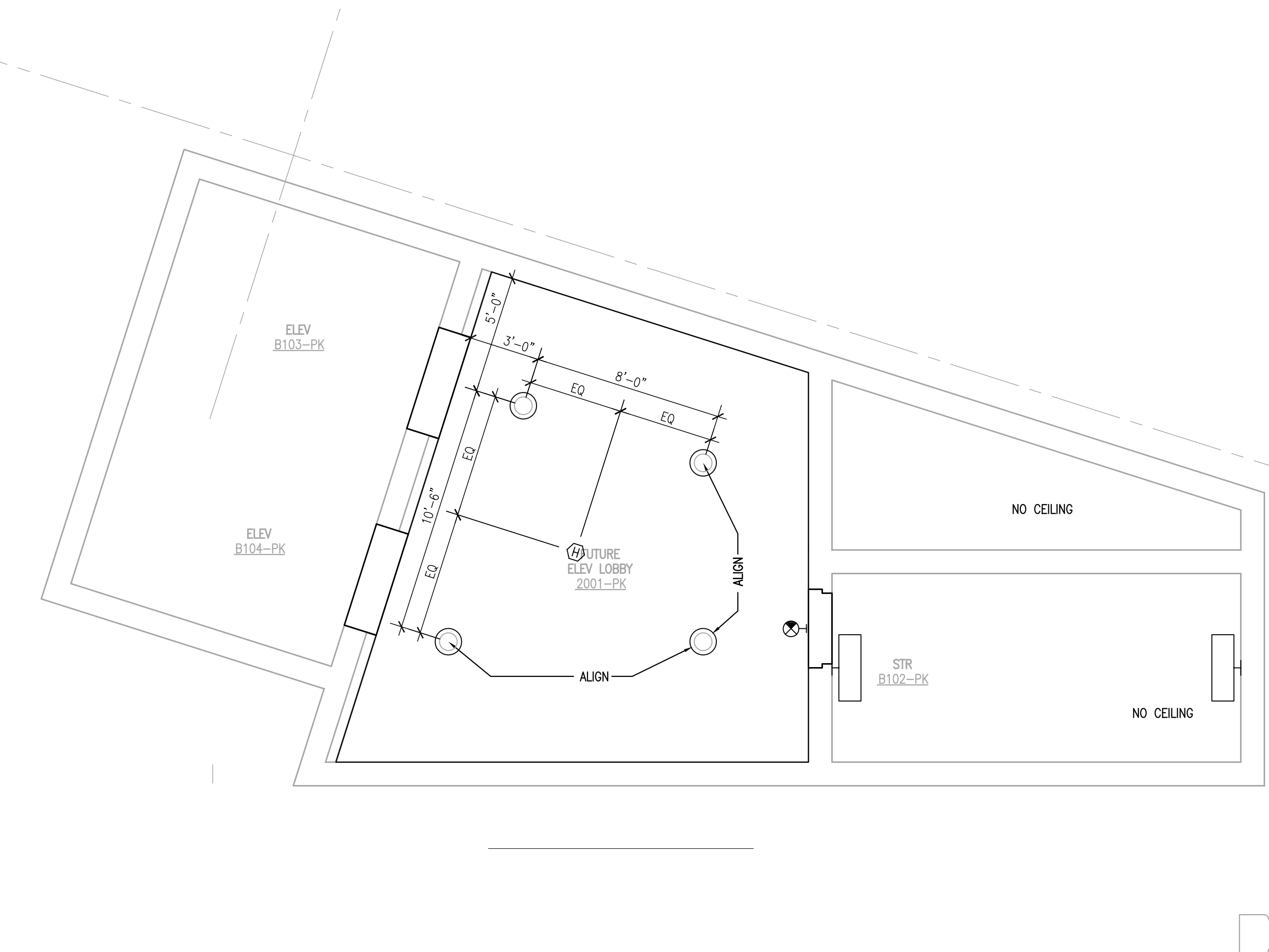
**D1** PARTIAL GARAGE ELEVATOR/STAIR TOWER  
LEVEL 4 RCP (ELEVATOR MACH RM)  
SCALE: 1/4" = 1'-0"



**D3** PARTIAL GARAGE ELEVATOR/STAIR TOWER  
LEVEL 3 RCP (HELIPORT LEVEL)  
SCALE: 1/4" = 1'-0"



**B5** PARTIAL GARAGE ELEVATOR/STAIR TOWER  
LEVEL 1 RCP  
SCALE: 1/4" = 1'-0"



**D5** PARTIAL GARAGE ELEVATOR/STAIR TOWER  
LEVEL 2 RCP  
SCALE: 1/4" = 1'-0"

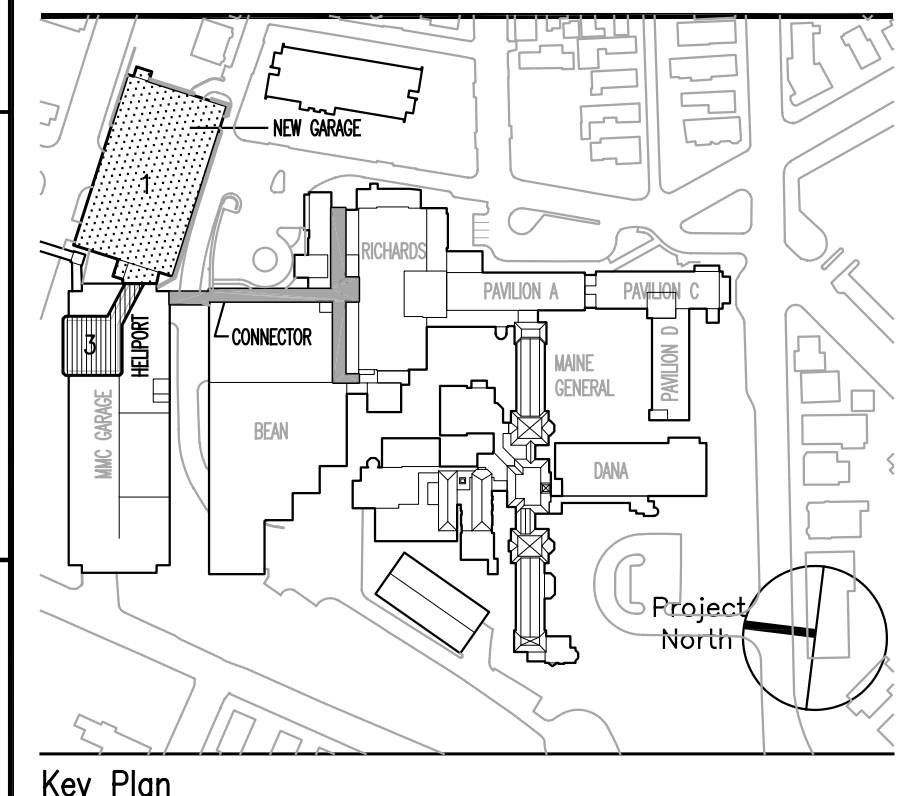
**General Notes:**  
 1. ALL CEILING HEIGHTS SHALL BE 8'-0" UNLESS OTHERWISE NOTED.  
 2. ALL SOFFIT HEIGHTS SHALL BE 7'-2" UNLESS OTHERWISE NOTED.  
 3. ALL CEILING GRIDS ARE CENTERED IN ROOMS UNLESS OTHERWISE NOTED.  
 4. ABBREVIATION (A, ET.) DEFINES THE USE OF A FULL TILE.

- REFLECTED CEILING LEGEND**  
 -SEE REFLECTED CEILING PLAN FOR CEILING HEIGHTS.
- RECESSED 2'x4' FLUORESCENT LIGHT
  - RECESSED 2'x2' FLUORESCENT LIGHT
  - RECESSED 1'x4' FLUORESCENT LIGHT
  - DOWN LIGHT
  - SURFACE MOUNTED STRIP LIGHT
  - DOWN LIGHT (WALL WASHER)
  - PENDANT LIGHT FIXTURE
  - PENDANT LIGHT
  - SURFACE MOUNTED FIXTURE
  - WALL SCONCE
  - TRACK LIGHTING
  - COVE LIGHT FIXTURE
  - PERIMETER SLOT LIGHT
  - WALL SURFACE MOUNTED FIXTURE
  - EXIT SIGN
  - SPEAKER
  - NURSE CALL
  - FIRE ALARM/HORN
  - SMOKE DETECTOR
  - HEAT DETECTOR
  - EMERGENCY LIGHTING
  - SPRINKLER
  - CEILING MOUNTED PROCEDURE/SURGICAL FIXTURE
  - WALL VALANCE
  - SURFACE MOUNTED 2'x4' FLUORESCENT LIGHT
  - SURFACE MOUNTED 2'x2' FLUORESCENT LIGHT
  - SURFACE MOUNTED 1'x4' FLUORESCENT LIGHT

- HEIGHT MATL.**
- 2'x2' ACOUSTIC TILE
  - 2'x4' ACOUSTIC TILE
  - GYPSUM WALLBOARD CEILING OR SOFFIT
  - 2'x2' WOOD VENEER CEILING TILE
  - METAL PANEL (MP-1A)
  - METAL PANEL (MP-1B)
  - PERFORATED ACOUSTIC METAL CEILING
  - MECHANICAL SUPPLY DIFFUSER
  - MECHANICAL RETURN REGISTER
  - MECHANICAL EXHAUST
  - RADIANT HEAT PANEL
  - MECHANICAL LINEAR DIFFUSER/RETURN
  - ACCESS PANEL
  - CURTAIN TRACK
  - N TRACK

MARK	ISSUE DATE	DESCRIPTION
PERMIT	09/18/04	PERMIT SET
BD	08/28/04	BD SET

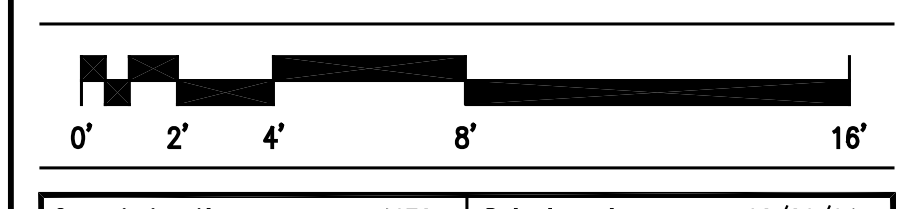
Issue Log



**TRO**  
 ARCHITECTURE  
 PLANNING  
 ENGINEERING  
 INTERIOR  
 The Ritchie Organization  
 80 Bridge Street  
 Newton, MA 02459-1411  
 617-552-9444

**Maine Medical Center**  
 Pkg F - Garage / Vault / Conn / Heliport  
 Portland, ME MMC Project No. 21845

Drawing Title  
**PARTIAL STAIR & ELEVATOR REFLECTED CEILING PLANS**



Commission No.	4678	Date Issued	08/26/04
Scale	1/4" = 1'-0"	Sheet Number	PKG-F
Drawn By	BJS/JN	Approved By	JW
File Name	4678A321.1.dwg	Project	A321.1