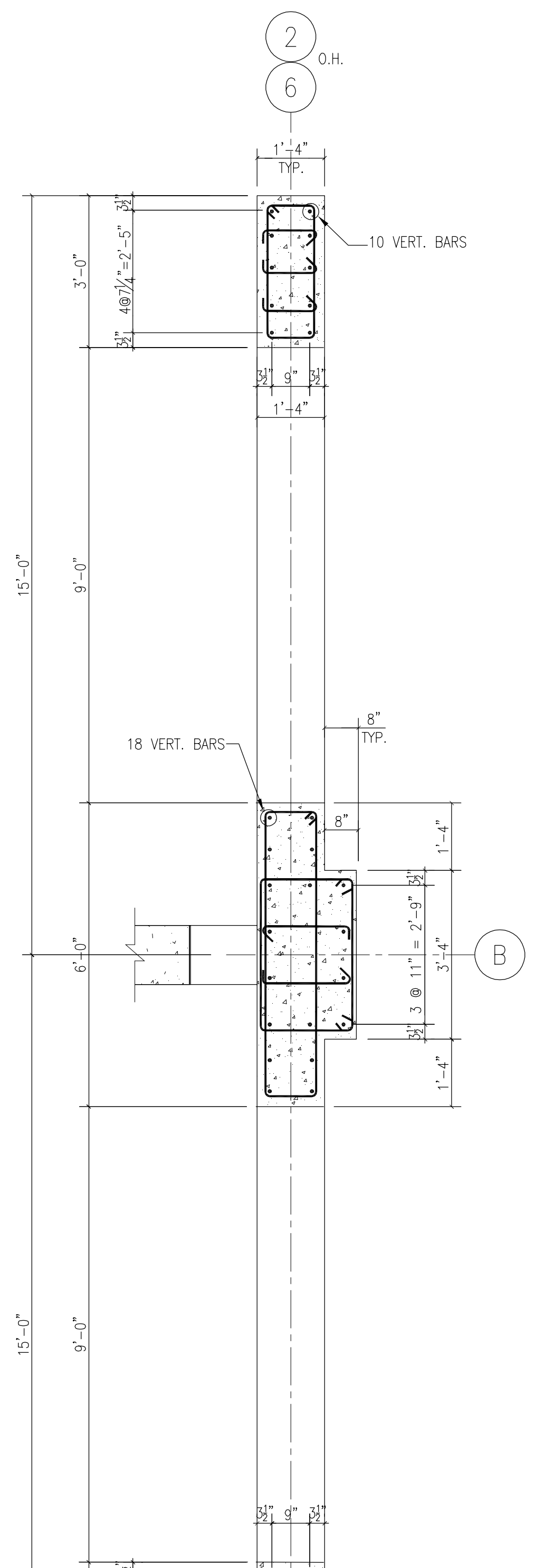
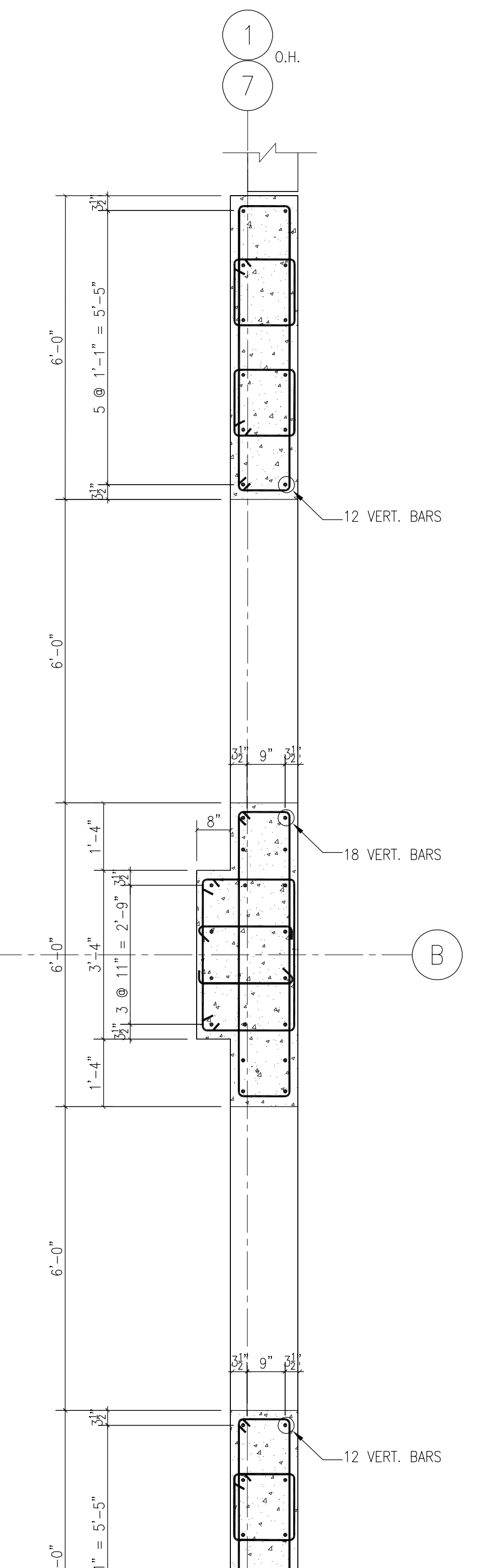


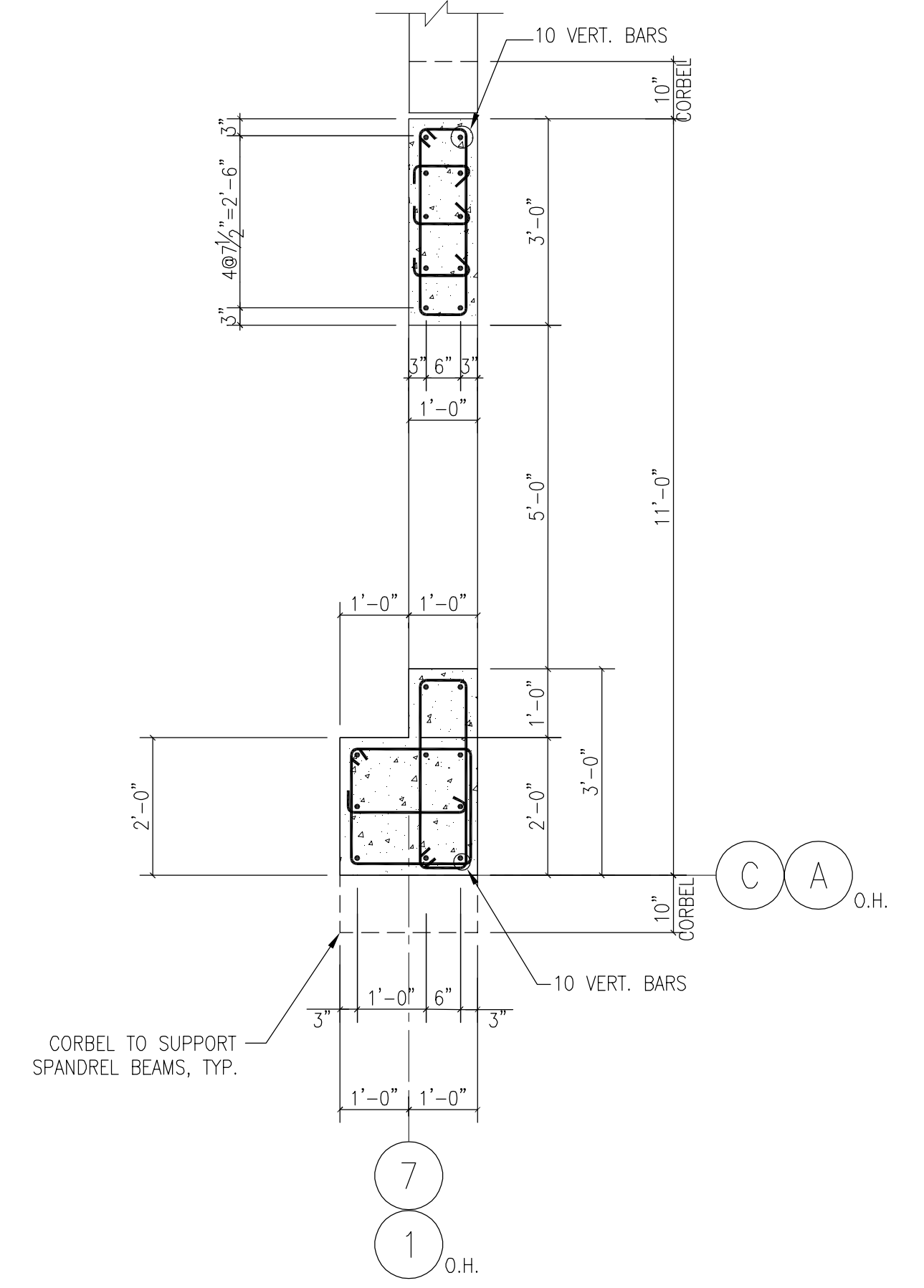
1 PLAN: TYPICAL PRECAST CONCRETE SHEAR WALL AT GRID LINE "4" 1/2" = 1'-0"



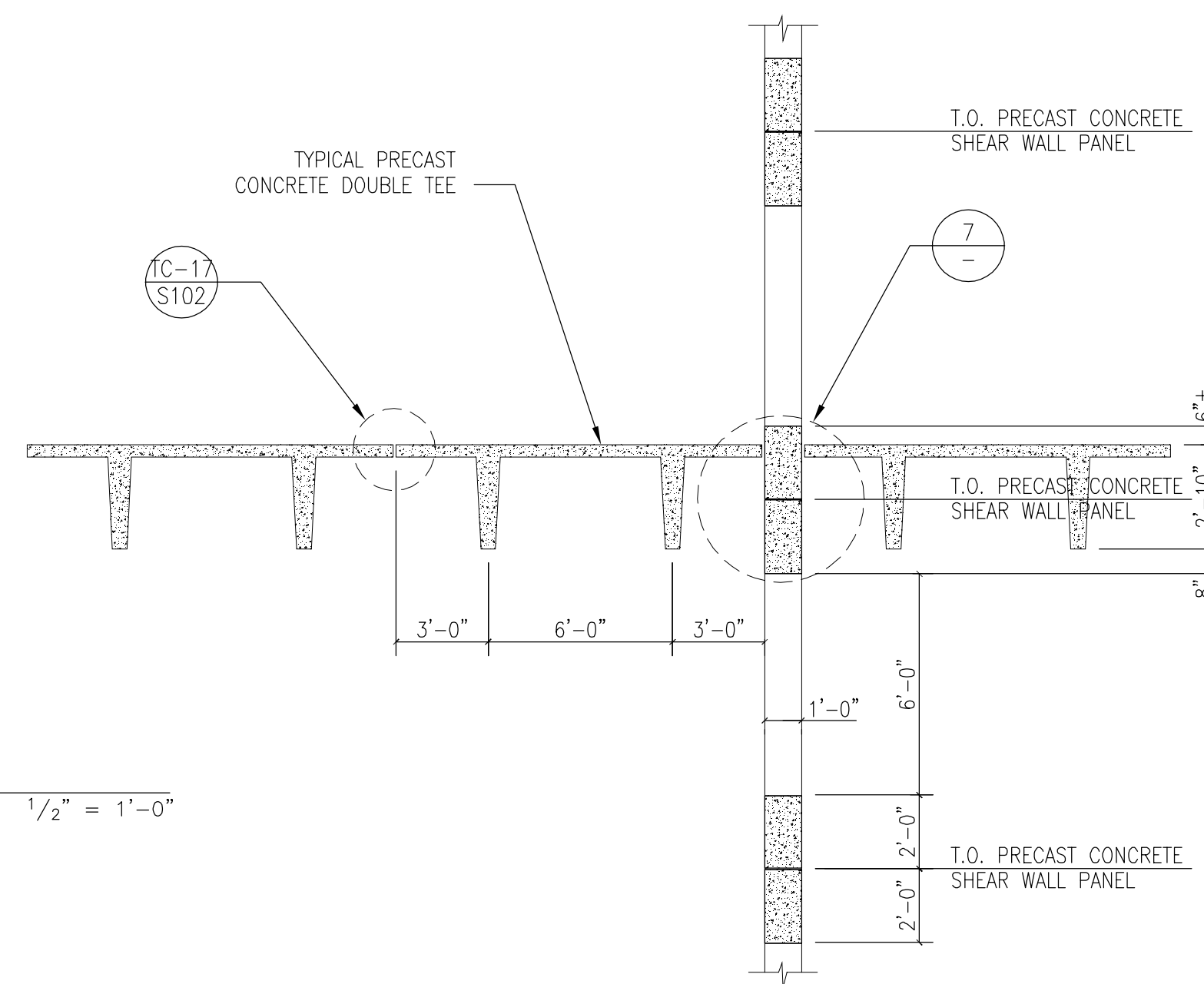
2 PLAN: TYPICAL PRECAST CONCRETE SHEAR WALLS AT GRID LINES "2" & "6" 1/2" = 1'-0"



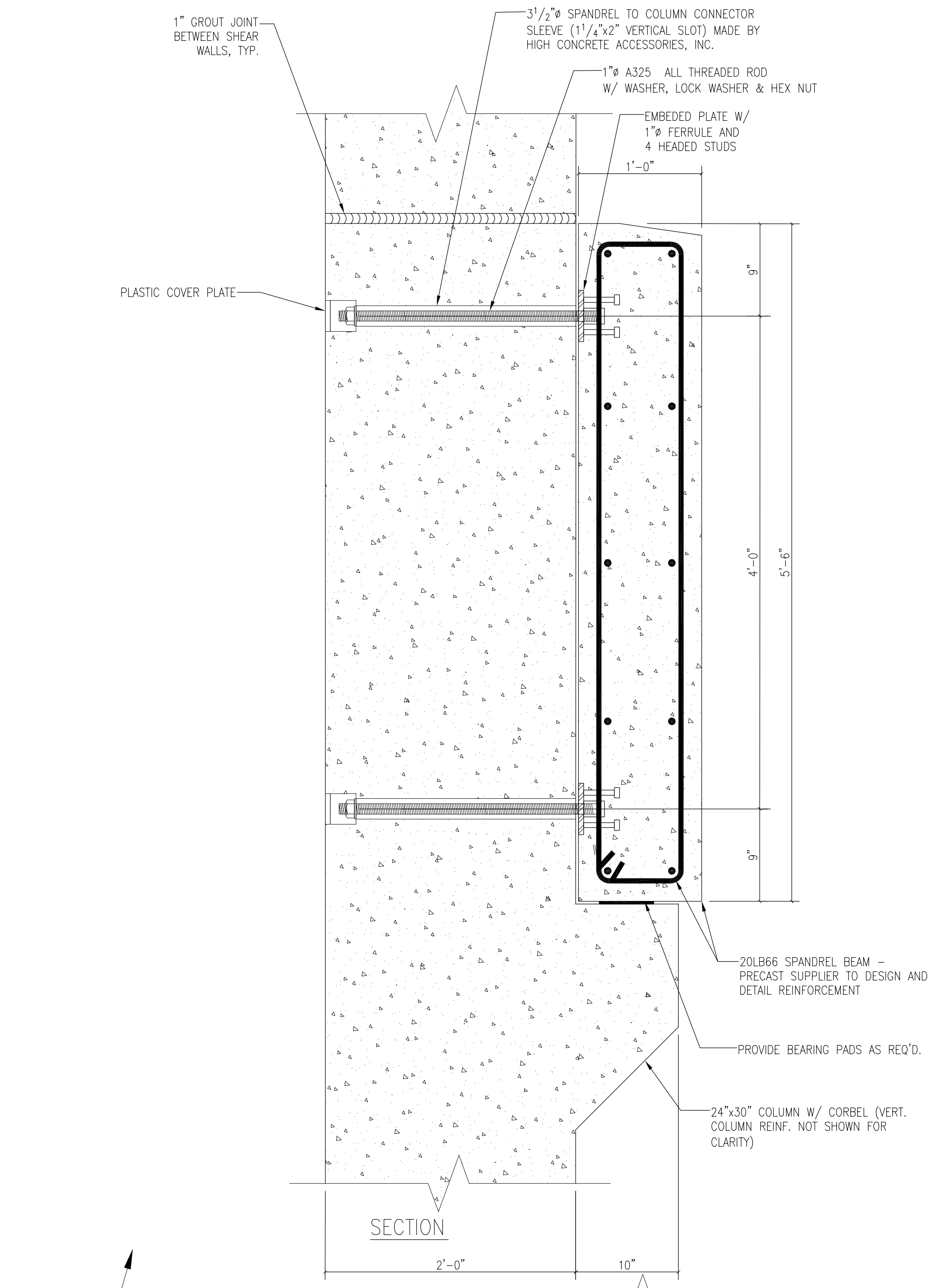
3 PLAN: TYPICAL PRECAST CONCRETE SHEAR WALLS AT GRID LINES "1" & "7" 1/2" = 1'-0"



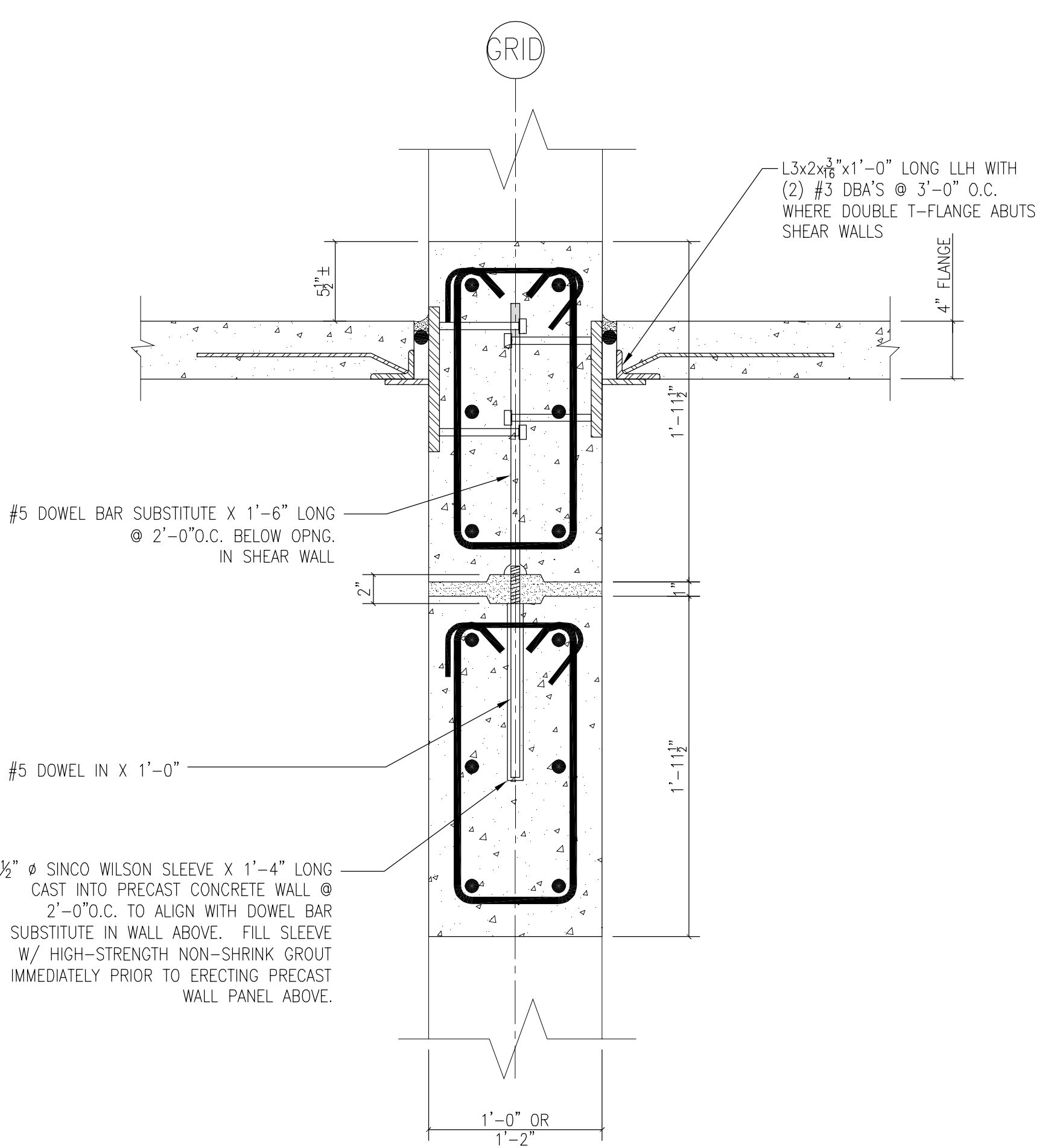
4 PLAN: TYPICAL PRECAST CONCRETE CORNER SHEAR WALLS AT GRID LINES "1" & "7" 1/2" = 1'-0"



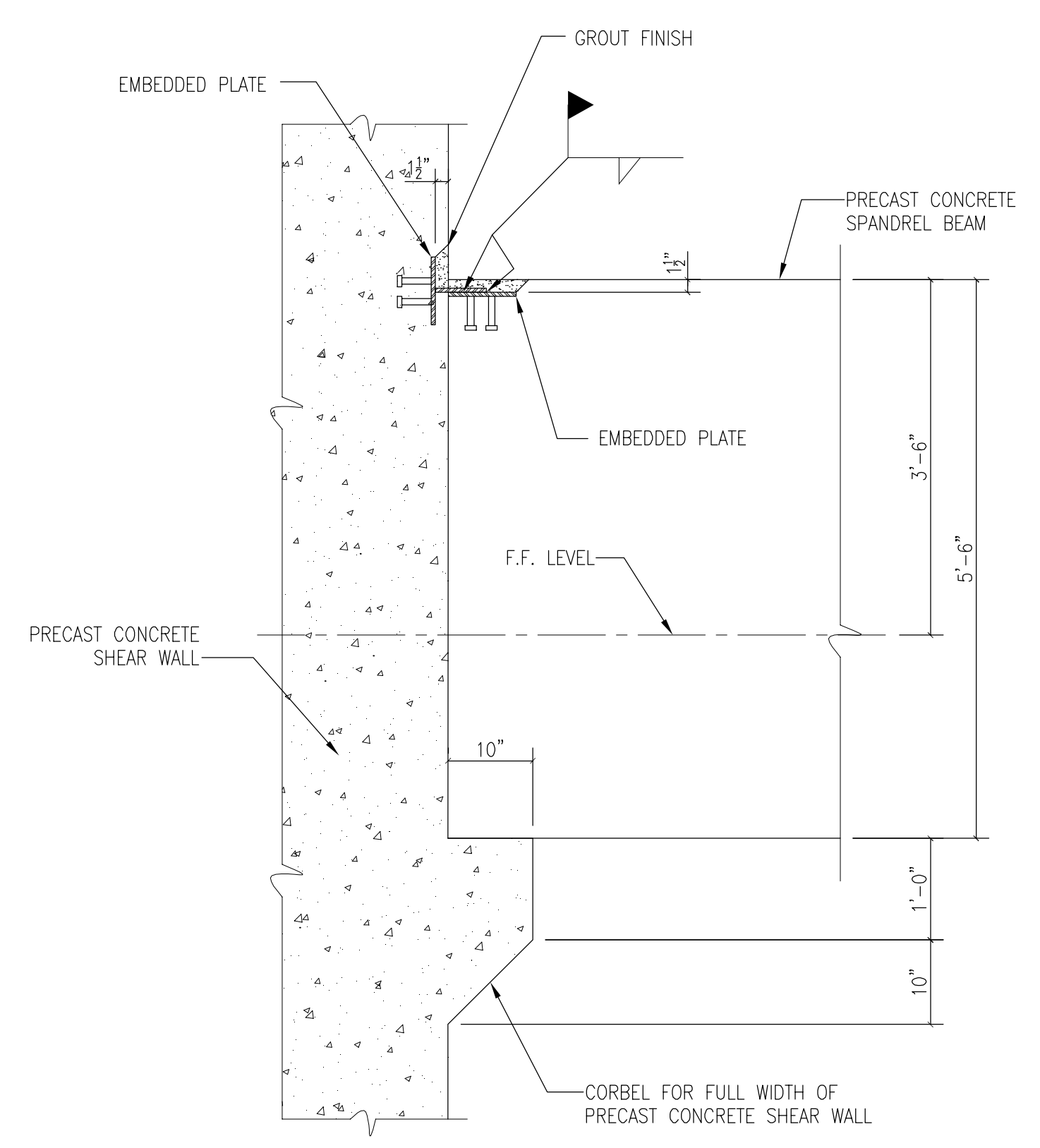
5 SECTION: SHEAR WALL / DOUBLE TEES 1/4" = 1'-0"



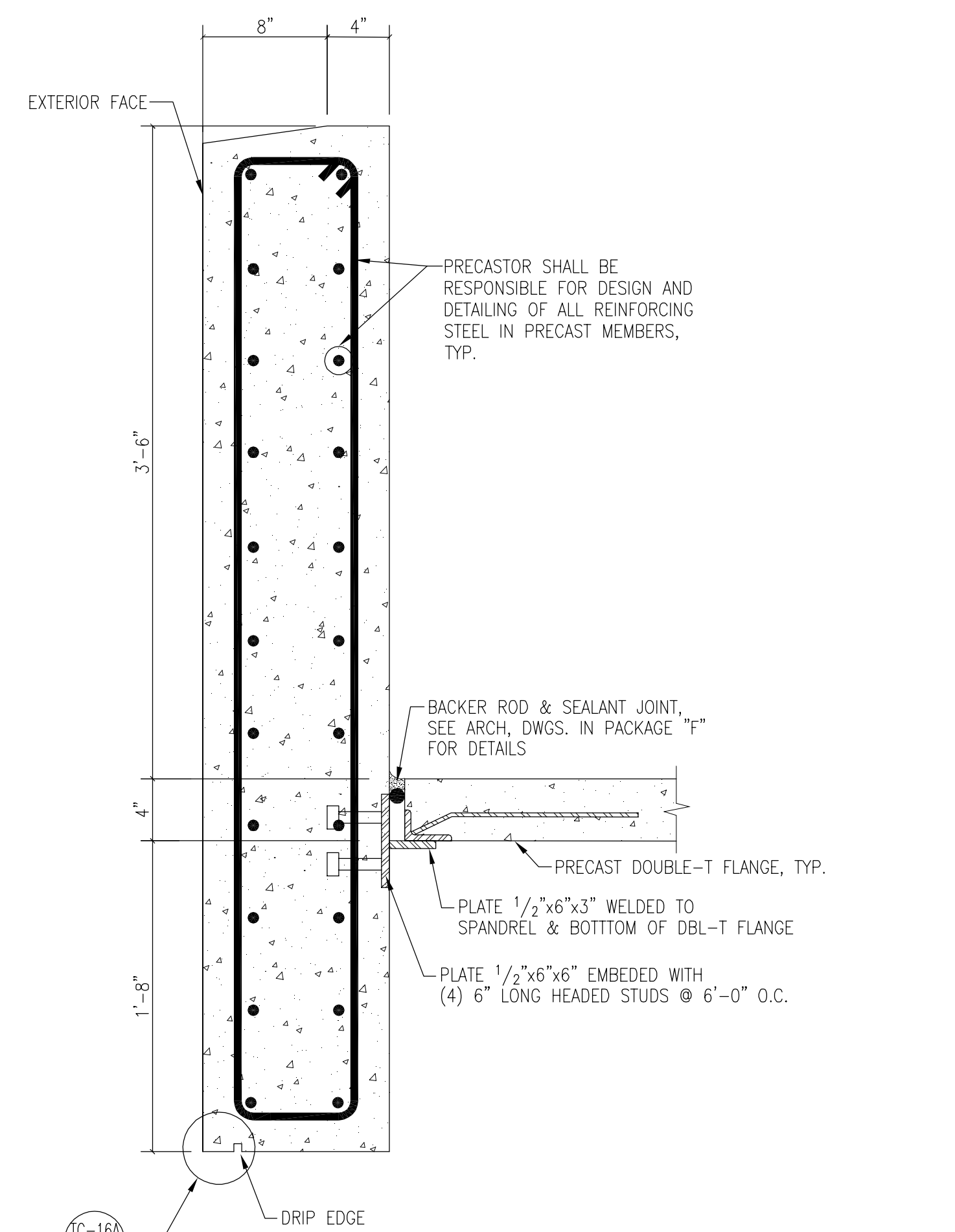
6 DETAIL-TYPICAL PRECAST CONCRETE SPANDREL BEAM / COLUMN CONNECTION AT SHEAR WALL 1/2" = 1'-0"



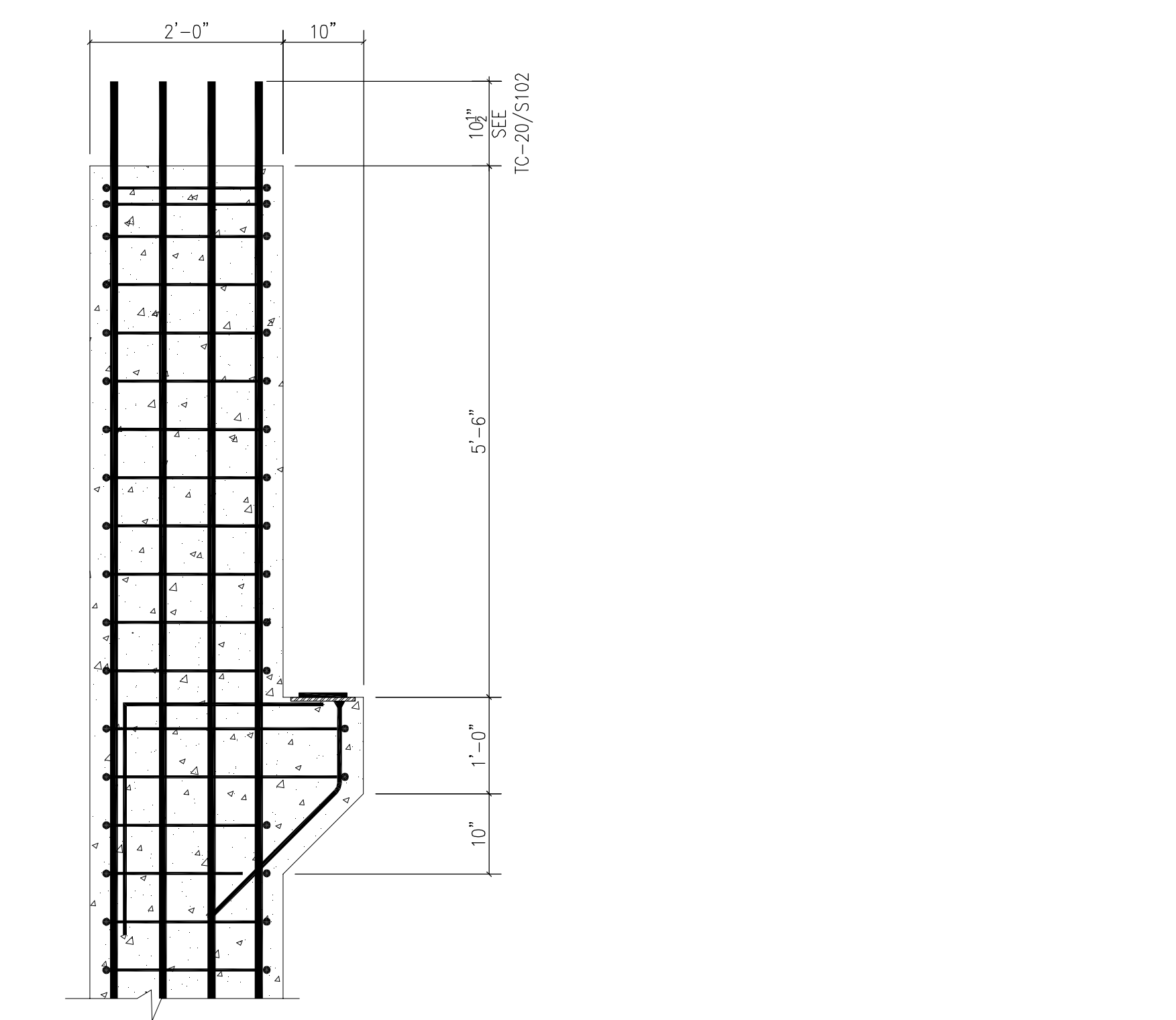
7 DETAIL: PRECAST SHEAR WALL CONNECTION 1/2" = 1'-0"



8 SECTION: SPANDREL BEAM BEARING AT SHEAR WALL AT GRIDS "1" AND "8" 3/4" = 1'-0"



9 SECTION THRU PERIMETER SPANDREL BEAM ON GRID LINES 1 & 7 1/2" = 1'-0"

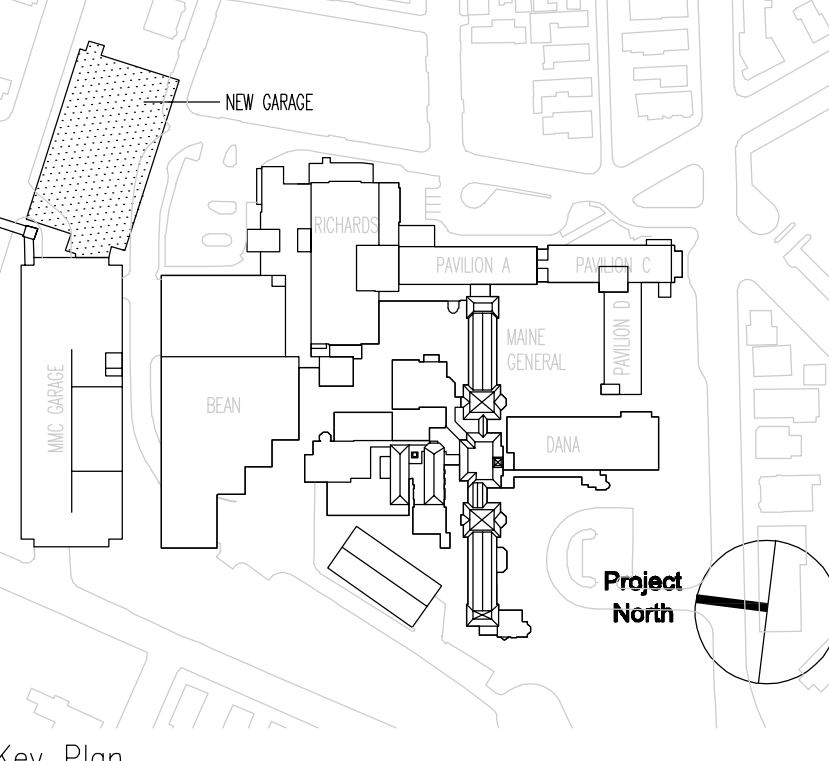


10 SECTION: TYPICAL PRECAST CONCRETE CORBEL 3/4" = 1'-0"

General Notes:

SGH
Simpson Gumpertz & Heger Inc.
Consulting Engineers
Boston, MA 41 Bayon Street, Suite 500, Telephone: (781) 907 9000
Waltham, MA 02453 Facsimile: (781) 907 9009
San Francisco, CA The Landmark at One Market, Suite 600, Telephone: (415) 435 3700
San Francisco, CA 94105 Facsimile: (415) 435 3550
Washington, DC 1855 Ploard Drive, Suite 225, Telephone: (301) 417 0999
Rockville, MD 20850 Facsimile: (301) 417 9825

MARK	ISSUE DATE	DESCRIPTION
PERMIT	09/16/04	PERMIT SET
BID	05/17/04	BID SET



TRO
ARCHITECTURAL PLANNING
ENGINEERING
INTERIOR DESIGN
The Ritchie Organization
80 Bridge Street
Newton, MA 02458-1154
617-869-9400

Maine Medical Center
Pkg E - Garage Foundation and Precast
Portland, ME MMC Project No. 21845

Commission No. 4678 Date Issued 05/17/04
Scale AS NOTED Sheet Number
Drawn By SWW
Approved By JHT/JLD
Checked S413
Copyright © 2004 The Ritchie Organization

PKG-E
S410