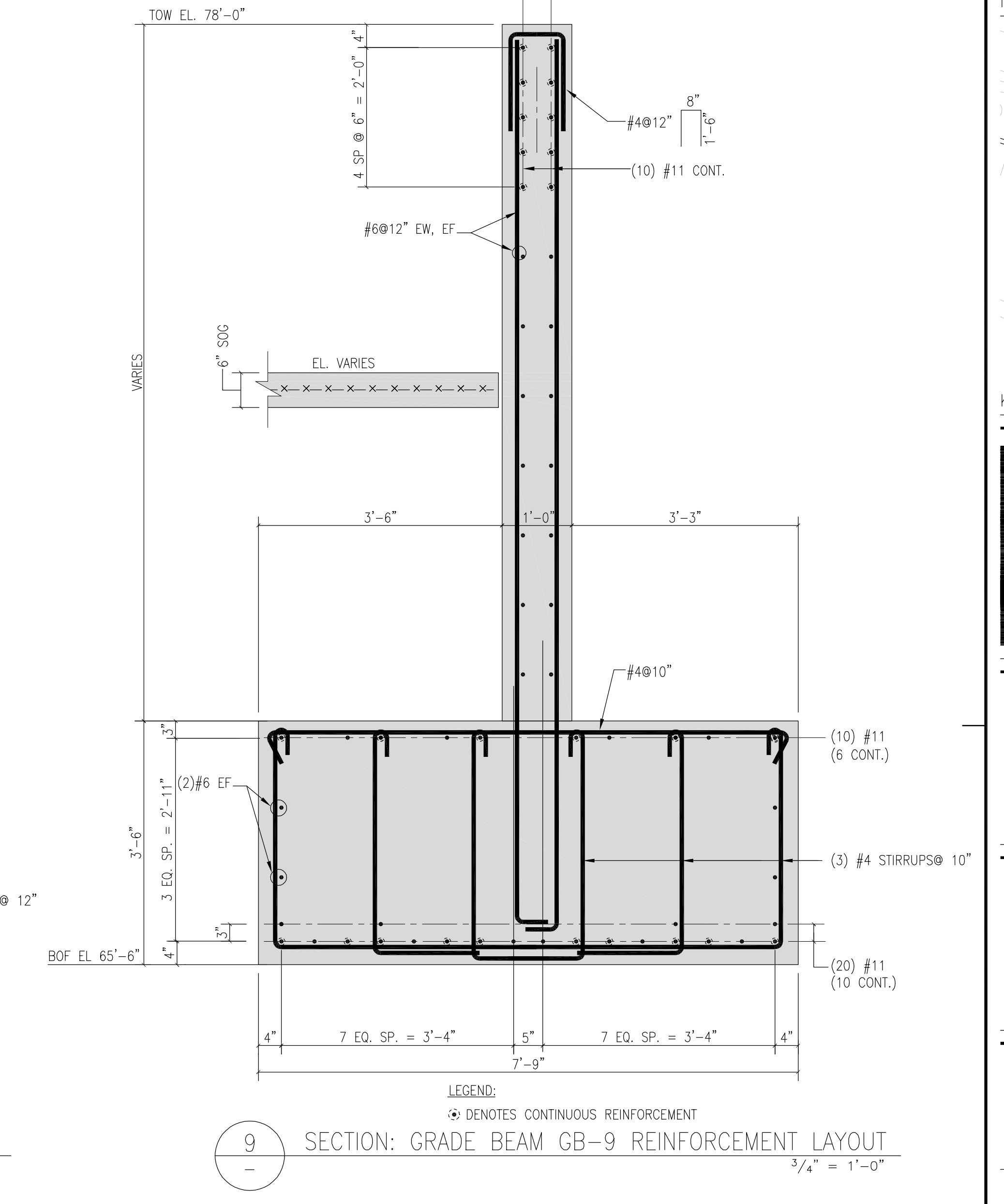
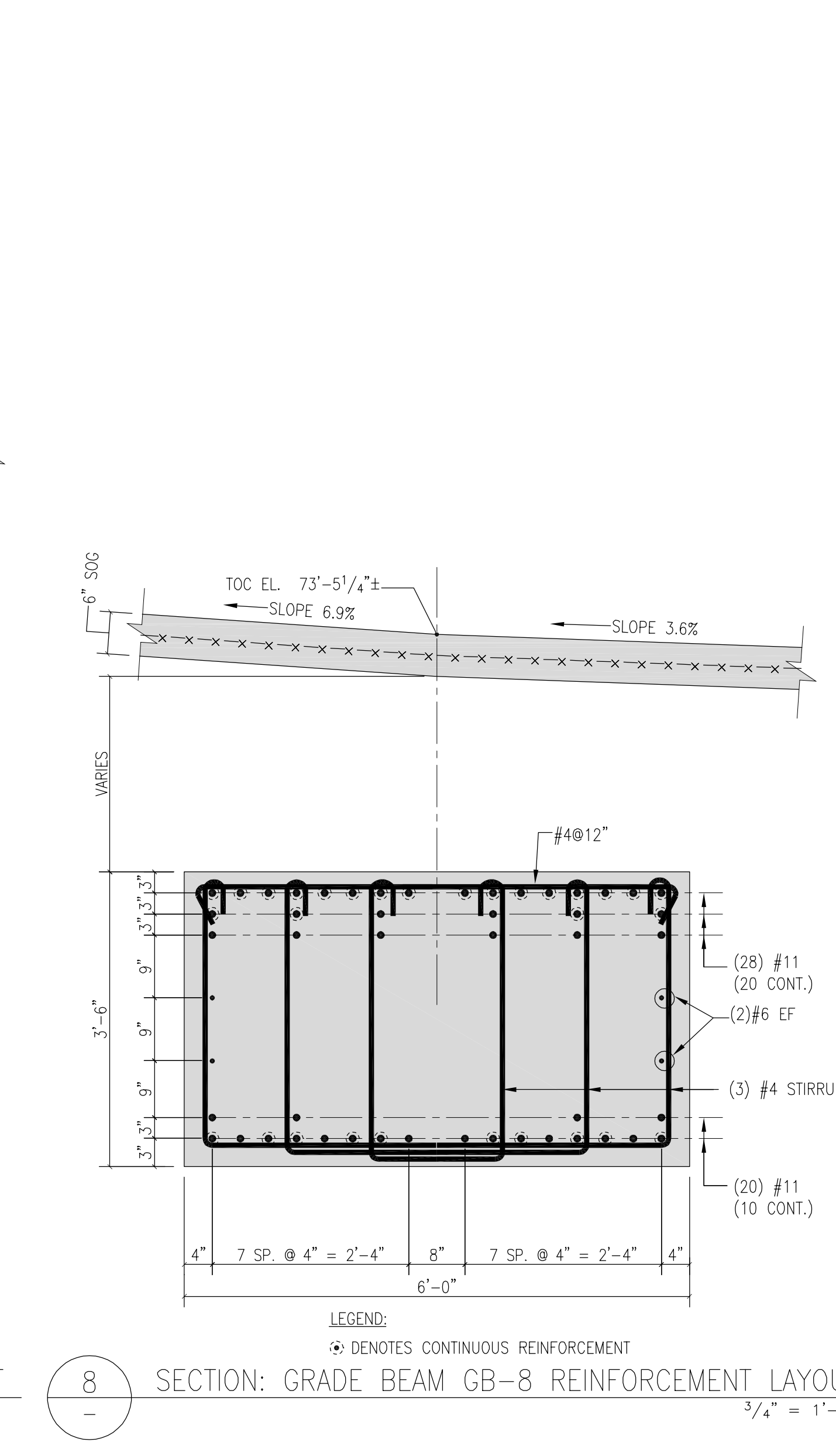
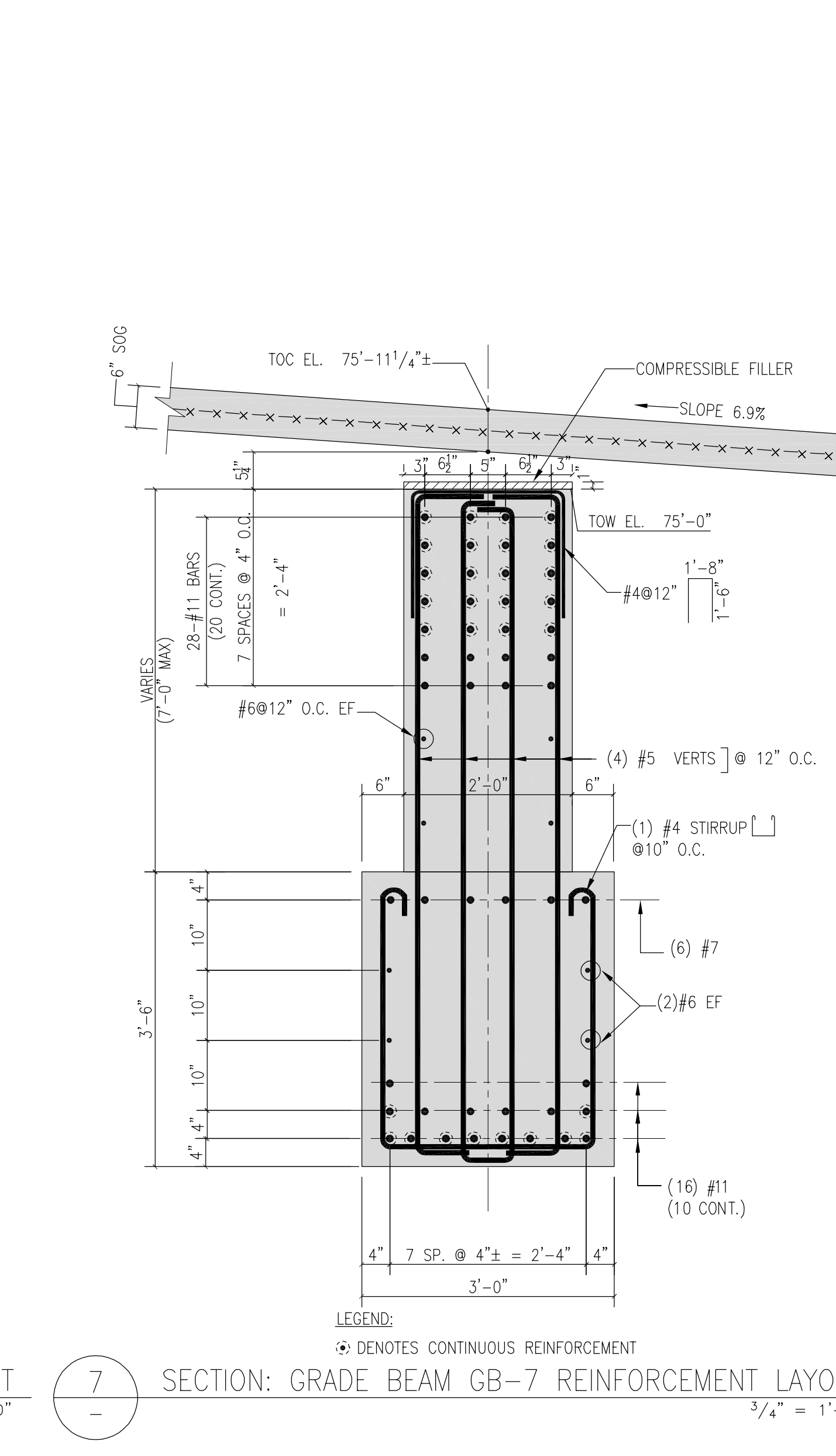
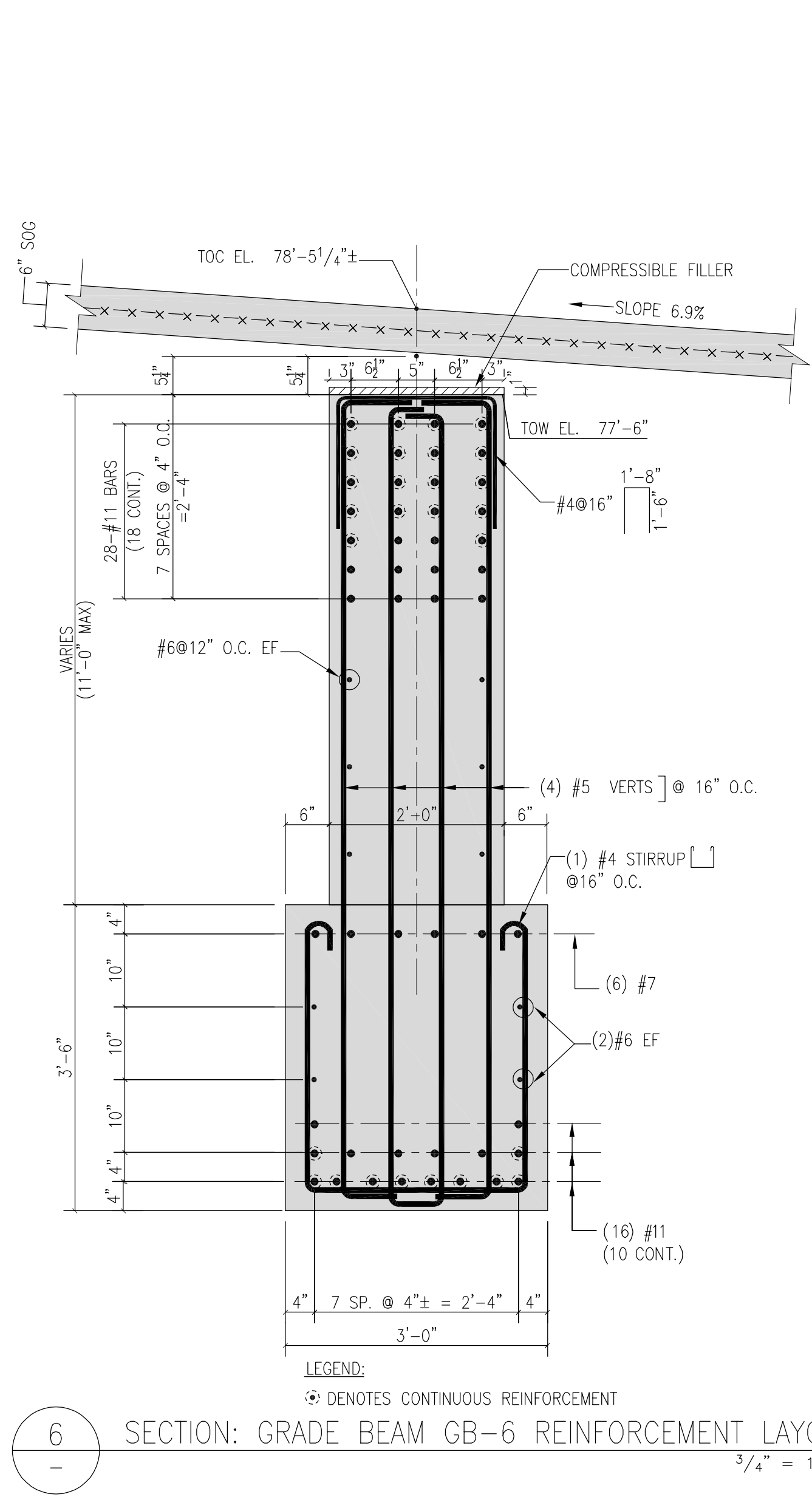
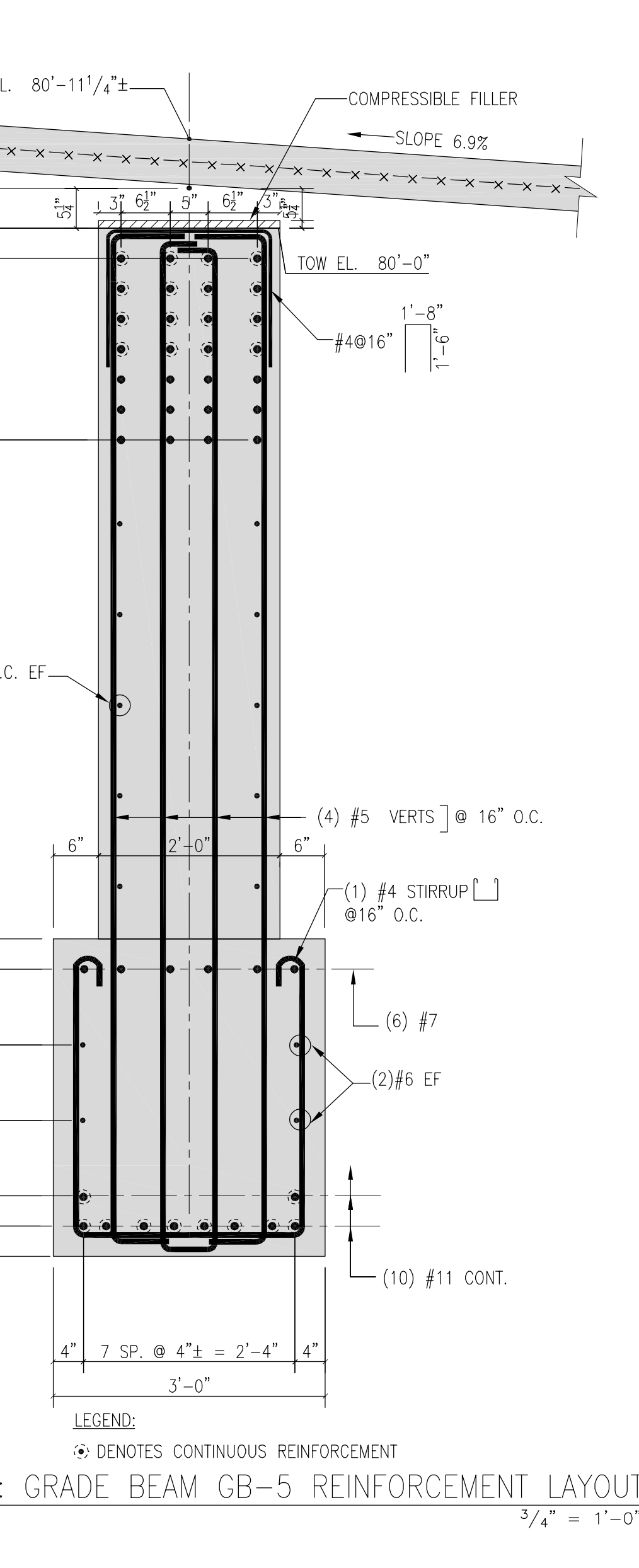
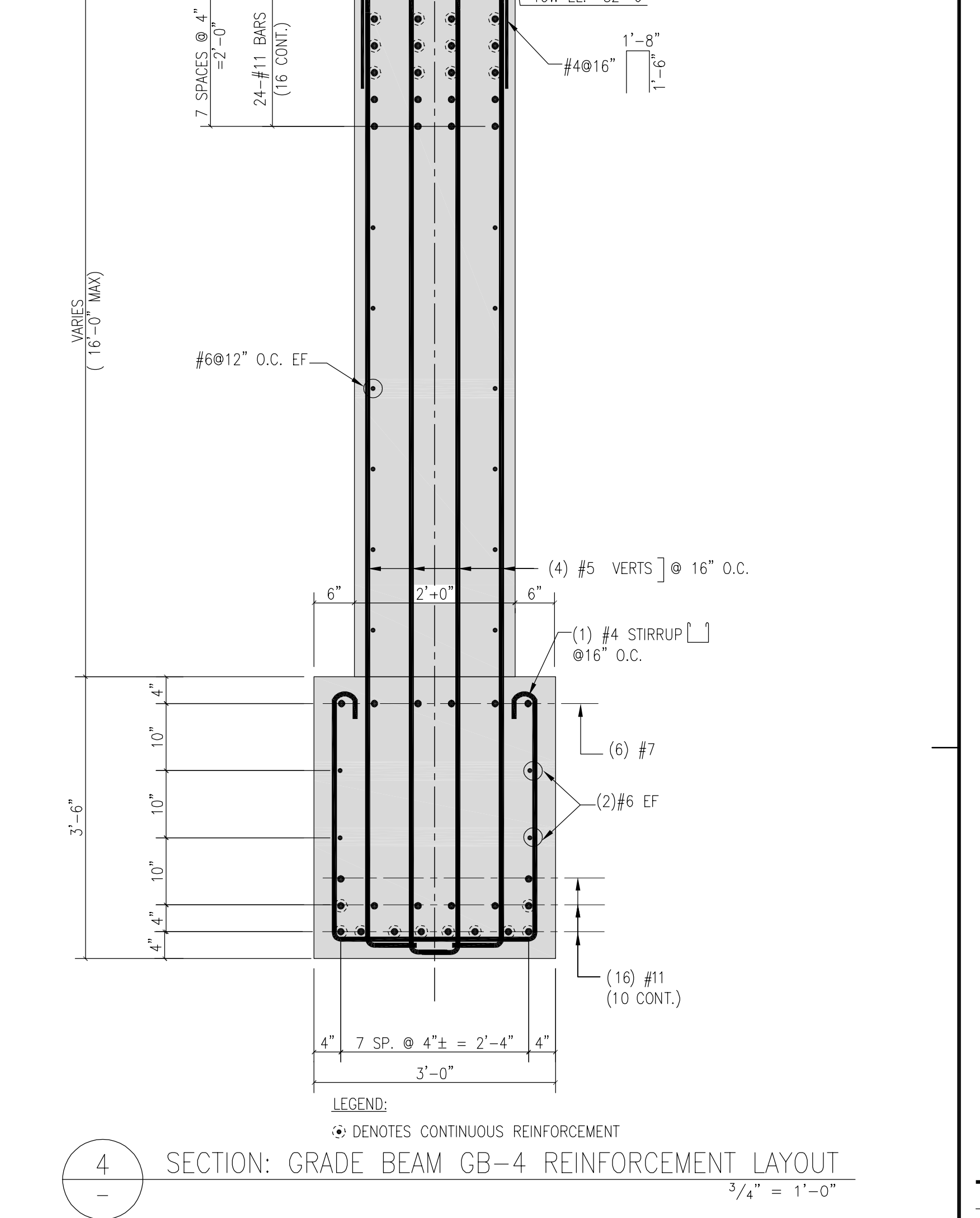
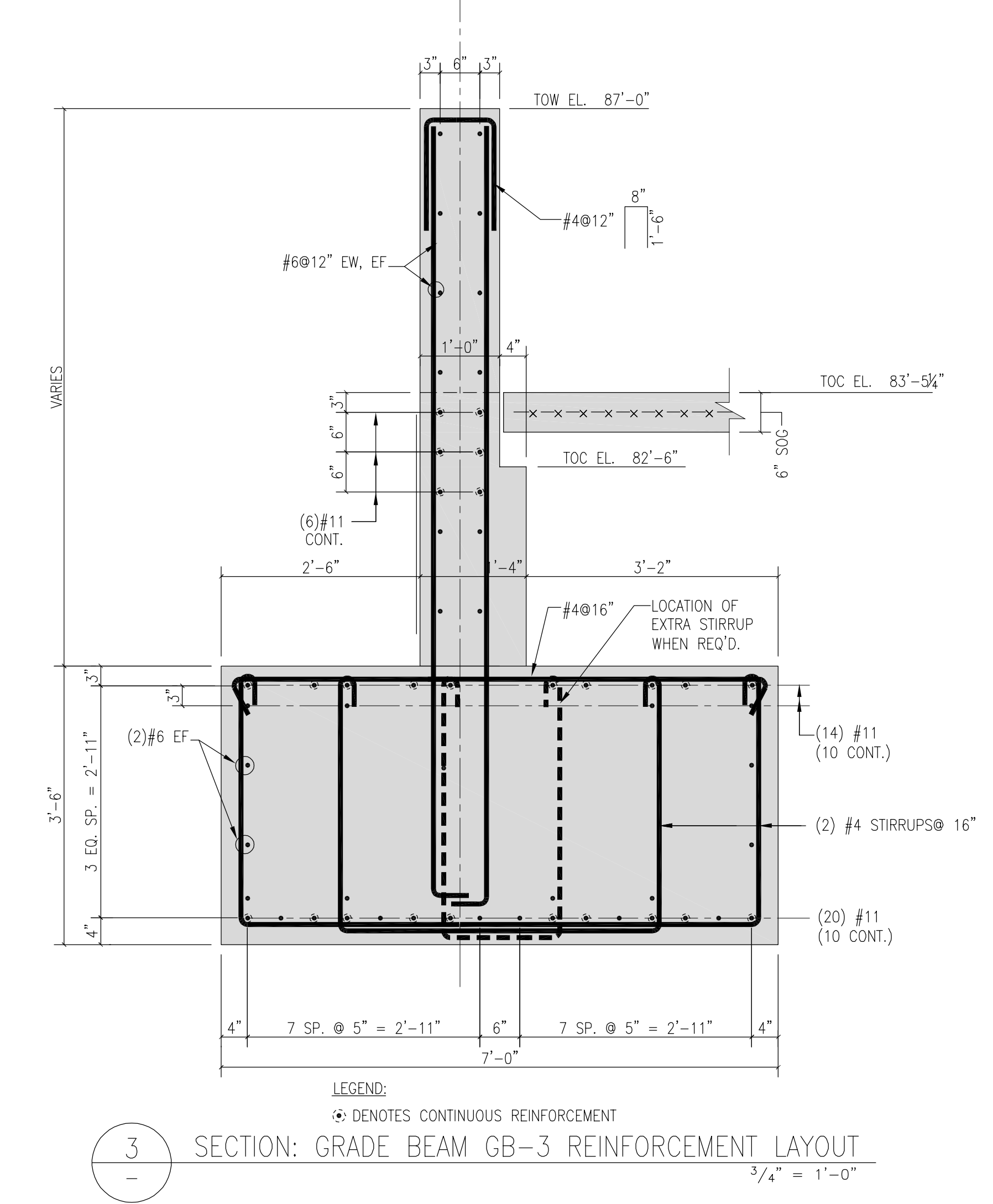
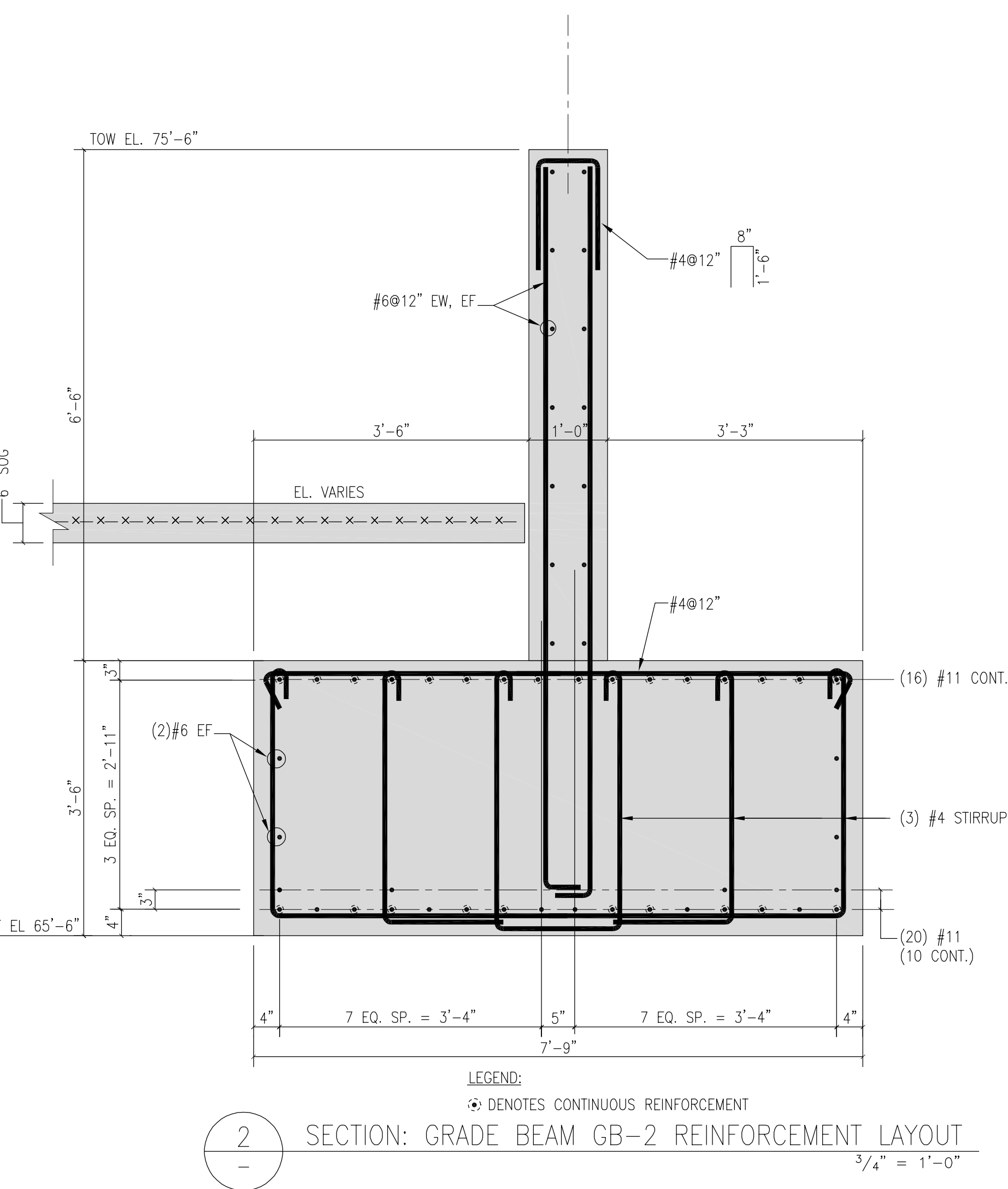
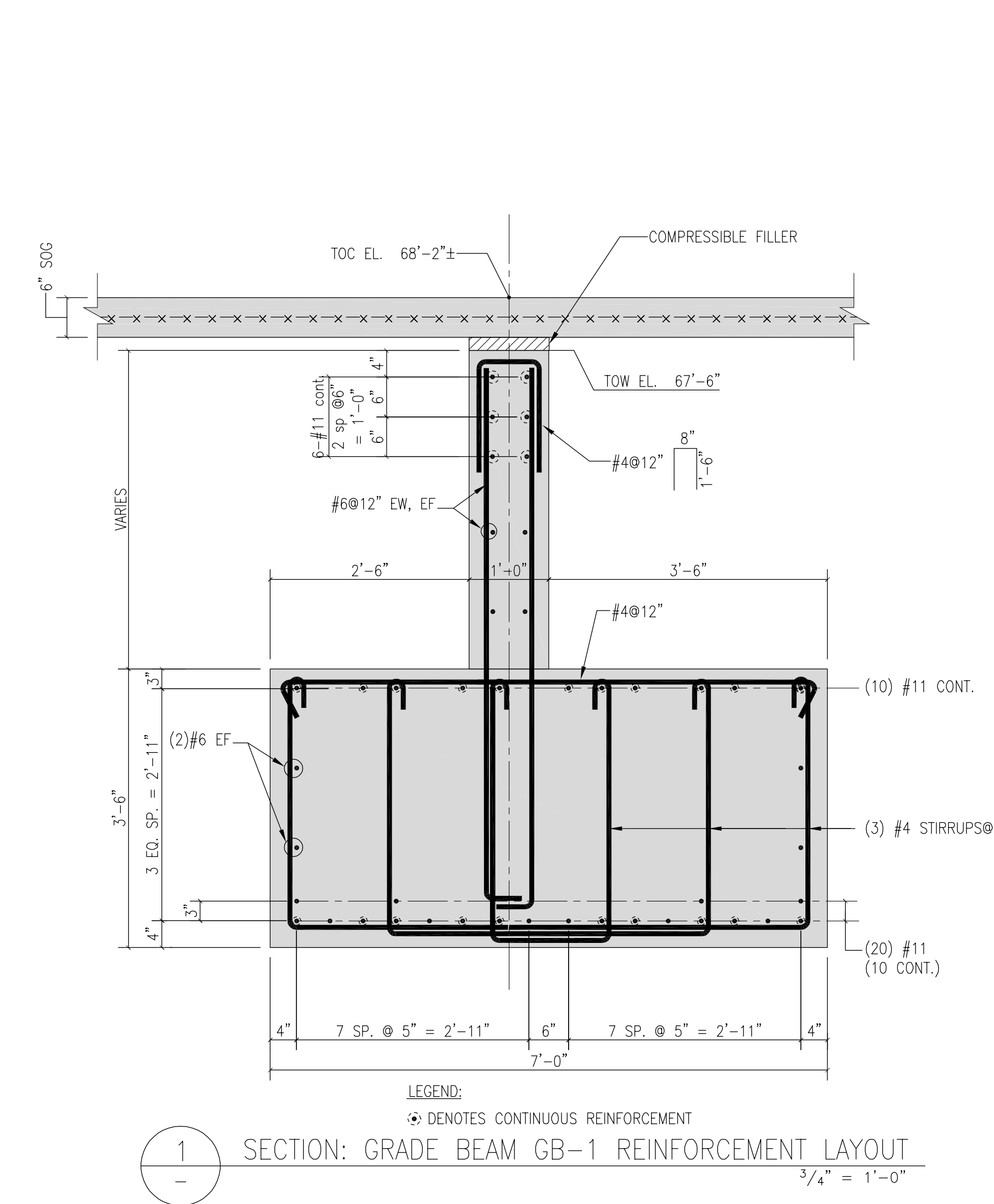


GRADE BEAM #	SIZE	REINFORCEMENT		SHEAR REINFORCEMENT ¹			NOTES
		TOP ^{1,2}	BOTTOM ^{1,2}	EDGE A/C ⁴	CENTER ⁴	EDGE B ⁴	
GB-1	84	42	18 CONT.	20 (40), 10 CONT.	4#4 @ 12", 2#6 @ 12"	4#4 @ 12", 2#6 @ 12"	1'-0" WIDE STEM WALL T.O.W. = 87'-0". SEE DETAIL 1.
GB-2	80	42	18 CONT.	20 (40), 10 CONT.	4#4 @ 12", 2#6 @ 12"	4#4 @ 12", 2#6 @ 12"	1'-0" WIDE STEM WALL T.O.W. = 75'-0". SEE DETAIL 2.
GB-3	84	42	20 (36), 16 CONT.	20 (30), 10 CONT.	6#4 @ 10", 2#6 @ 12"	4#4 @ 10", 2#6 @ 12"	1'-0" (1'-4") WIDE STEM WALL T.O.W. = 87'-0". SEE DETAIL 3.
GB-4	36	42	24 (36), 18 CONT.	18 (40), 10 CONT.	2#4 @ 10", 4#5 @ 12"	2#4 @ 10", 4#5 @ 12"	2'-0" WIDE STEM WALL T.O.W. = 82'-0". SEE DETAIL 4.
GB-5	36	42	20 (36), 18 CONT.	10 CONT.	2#4 @ 10", 4#5 @ 12"	2#4 @ 10", 4#5 @ 12"	2'-0" WIDE STEM WALL T.O.W. = 83'-0". SEE DETAIL 5.
GB-6	36	42	28 (40), 18 CONT.	18 (40), 10 CONT.	2#4 @ 10", 4#5 @ 12"	2#4 @ 10", 4#5 @ 12"	2'-0" WIDE STEM WALL T.O.W. = 77'-0". SEE DETAIL 6.
GB-7	36	42	26 (40), 20 CONT.	18 (40), 10 CONT.	2#4 @ 10", 4#5 @ 12"	2#4 @ 10", 4#5 @ 12"	2'-0" WIDE STEM WALL T.O.W. = 75'-0". SEE DETAIL 7.
GB-8	72	42	28 (45), 20 CONT.	20 (40), 10 CONT.	6#4 @ 12"	6#4 @ 12"	NO STEM WALL. SEE DETAIL 8.
GB-9	80	42	20 (36), 18 CONT.	20 (30), 10 CONT.	6#4 @ 10", 2#6 @ 12"	4#4 @ 10", 2#6 @ 12"	1'-0" WIDE STEM WALL T.O.W. = 78'-0". SEE DETAIL 9.

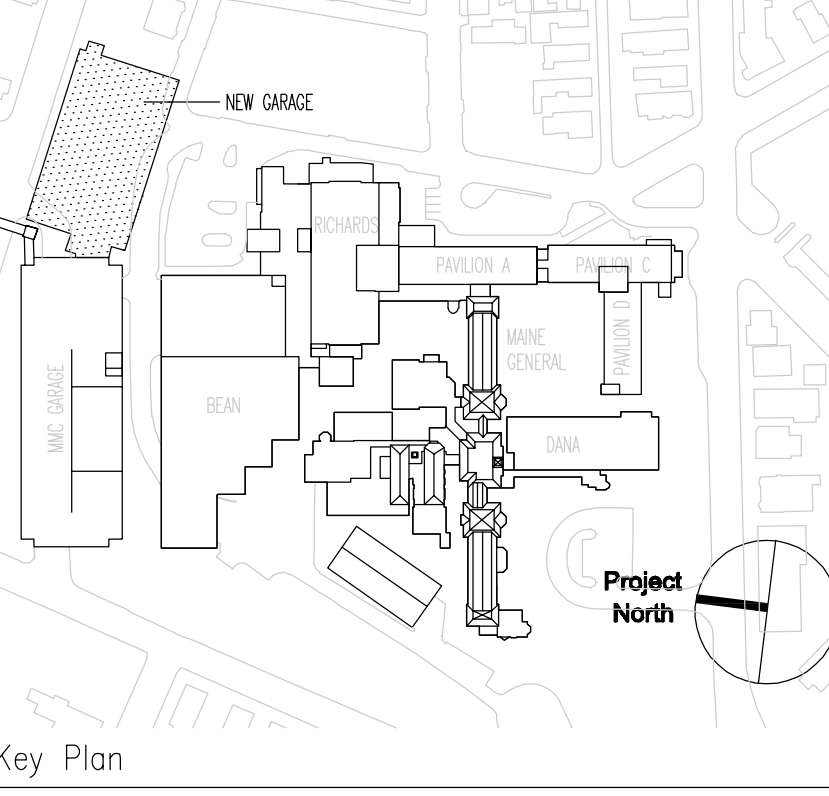
- NOTES:
 1. () DISTANCE IN FEET.
 DISTANCES FOR TOP REINFORCEMENT ARE MEASURED FROM CLINE. ADD 3" FOR LENGTH SOUTH OF CLINE.
 DISTANCES FOR BOTTOM REINFORCEMENT ARE MEASURED FROM B-LINE. ADD 15" FOR LENGTH NORTH OF B-LINE FOR GB-5 & GB-7. ADD 21" FOR LENGTH NORTH OF B-LINE FOR GB-4, GB-8, & GB-9.
 2. CONT. = CONTINUOUS FROM SOUTH FACE OF FTO ON B-LINE TO NORTH FACE OF FTO ON A-LINE OR FROM NORTH FACE OF FTO ON B-LINE TO SOUTH FACE OF FTO ON C-LINE.
 3. #X/Y @ Z = "X" NUMBER OF VERT. LEGS "Y" SIZE OF VERT. REIN. @ "Z" SPACING IN INCHES.
 4. EDGE A/C WITHIN 8" FROM A-LINE AND WITHIN 11" FROM C-LINE.
 CENTER: CLEAR SPAN BETWEEN STRIP FOOTINGS.
 EDGE B: WITHIN 15" EACH SIDE OF B-LINE.
 5. FACE REINFORCEMENT TO BE PROVIDED (#6 BARS AT 12" O.C. ALONG EACH FACE).



SGH
Simpson Gumpertz & Heger Inc.
 Consulting Engineers
 Boston, MA 41 Bayon Street, Suite 500, Telephone: (781) 907 9000
 900 Walnut, MA 02455 Facsimile: (781) 907 9009
 San Francisco, CA The Landmark at One Market, Telephone: (415) 498 3700
 Suite 600 San Francisco, CA Facsimile: (415) 498 3550
 94105
 Washington, DC 1885 Ploard Drive, Telephone: (301) 417 0999
 Suite 225 Rockville, MD Facsimile: (301) 417 9825
 20850

MARK	ISSUE DATE	DESCRIPTION
PERMIT	09/16/04	PERMIT SET
BID	05/17/04	BID SET

Issue Log



TRO
 ARCHITECTURE
 PLANNING
 ENGINEERING
 INTERIOR DESIGN
 The Ritchie Organization
 80 Bridge Street
 Newton, MA 02459-1134
 617-969-9400

Maine Medical Center
 Pkg E - Garage Foundation and Precast
 Portland, ME MMC Project No. 21845

Drawing Title
GARAGE CAST IN PLACE CONCRETE SECTIONS & DETAILS

Commission No. 4678 Date Issued 05/17/04
 Scale AS NOTED Sheet Number
 Drawn By SWW
 Approved By JHT/JAZ
 Discipline S402

PKG-E S402

Copyright © 2004 The Ritchie Organization