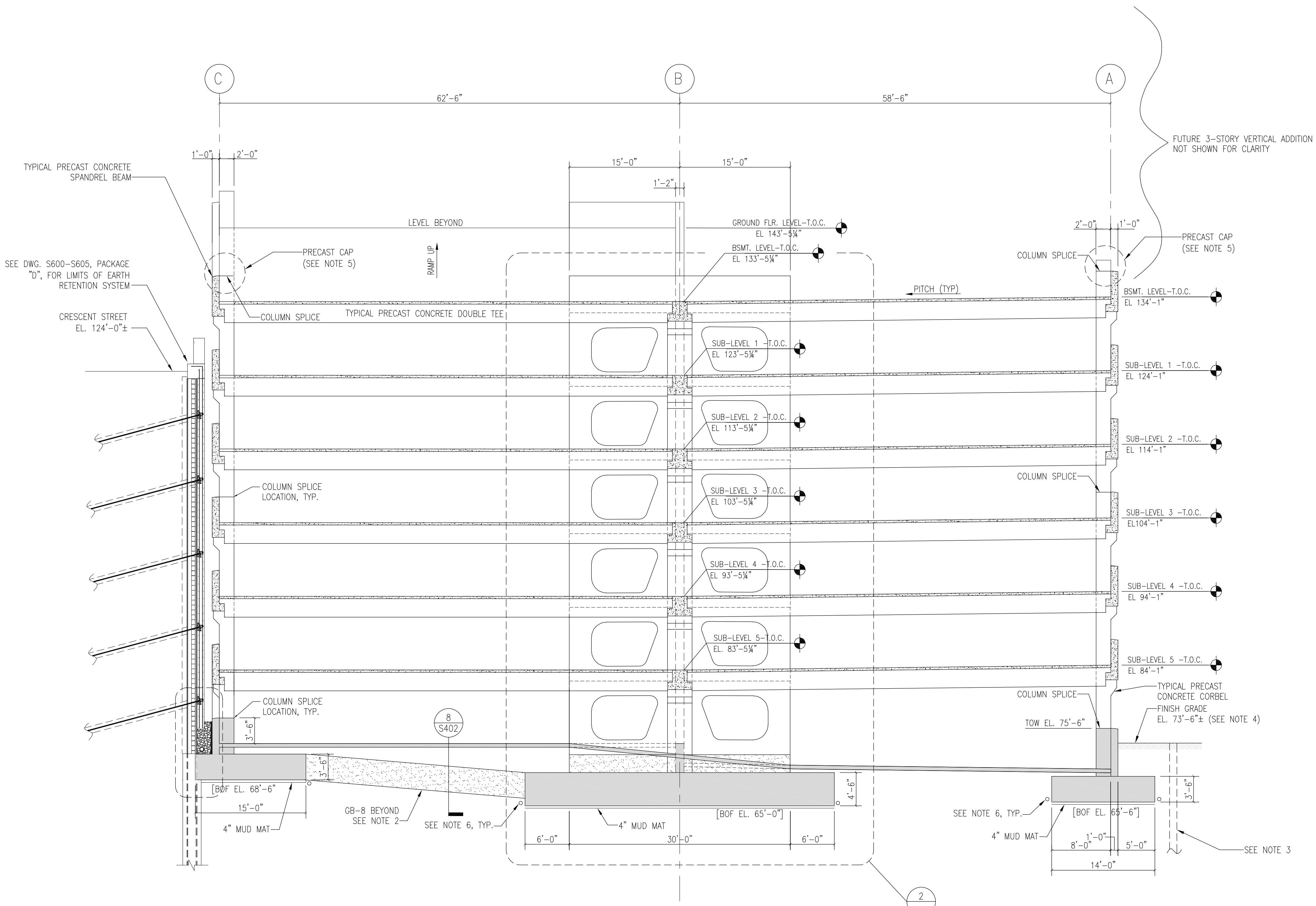
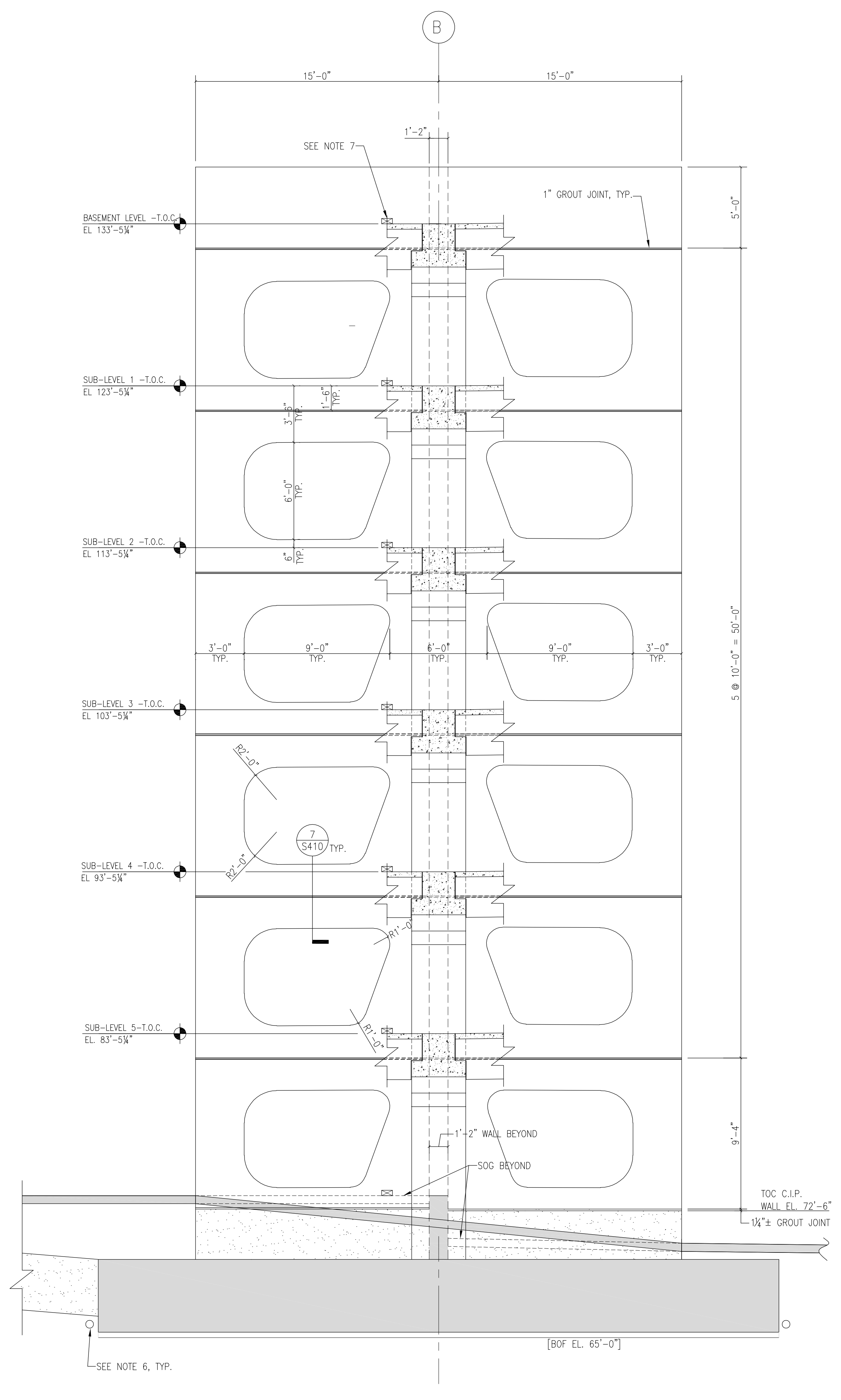


- General Notes:
- SEE FOUNDATION DRAWING S201 FOR INFORMATION NOT SHOWN.
 - SEE GRADE BEAM SCHEDULE AND DETAILS ON SHEET S402.
 - TEMPORARY SHEET - PILING ALONG CONGRESS SHEET DURING CONSTRUCTION OF STRIP FOOTING ALONG A-LINE. SHEET PILING TO BE DESIGNED AND DETAILED BY CONTRACTOR. CALCULATIONS & DRAWINGS STAMPED AND SIGNED BY A REGISTERED PE IN THE STATE OF MAINE. SUBMIT TO EOR FOR REVIEW & APPROVAL.
 - SEE CIVIL DRAWINGS FOR FINAL GRADES AND CONTOURS.
 - PRECAST CAPS SHALL BE DETAILED SUCH THAT THEY CAN BE REMOVED WHEN FUTURE VERTICAL EXPANSION IS CONSTRUCTED.
 - PERIMETER FOOTING DRAINS. SEE CIVIL DRAWINGS FOR DETAILS.
 - STAINLESS STEEL SCUPPERS, TYPICAL. SEE ARCH. DRAWINGS IN PACKAGE "F" FOR DETAILS.



1 GARAGE TRANSVERSE SECTION @ GRID LINE "6"
1/8" = 1'-0"

LEGEND	
	CAST-IN-PLACE CONCRETE IN SECTION
	CAST-IN-PLACE CONCRETE IN ELEVATION
	PRECAST CONCRETE

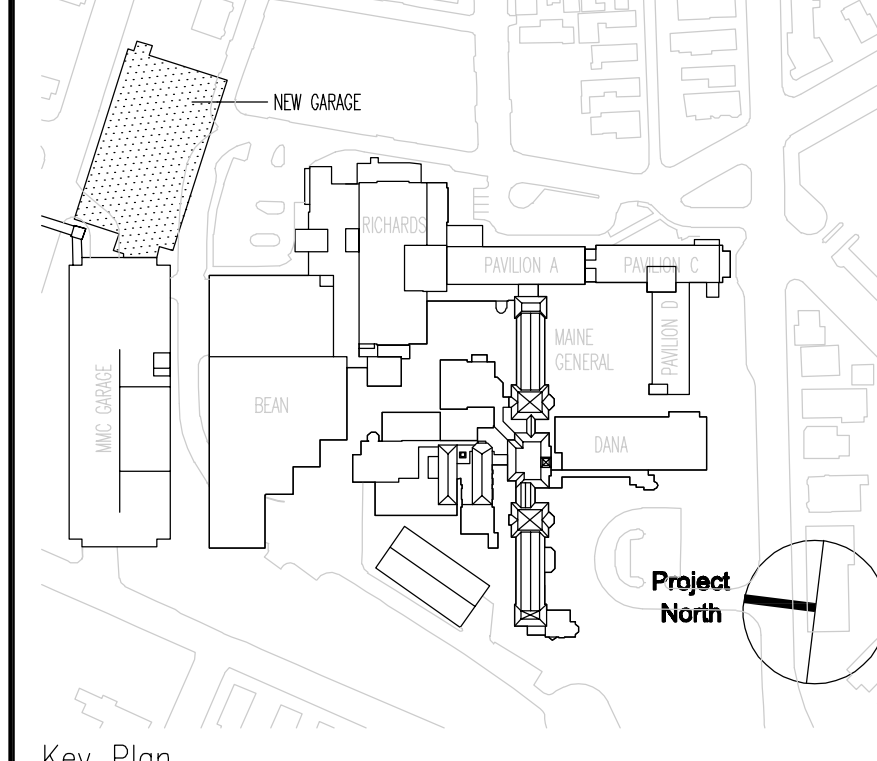


2 ELEVATION: PRECAST CONCRETE SHEAR WALL - GRID LINE 6
1/4" = 1'-0"

SGH
Simpson Gumpertz & Heger Inc.
Consulting Engineers
Boston, MA 41 Bayon Street, Suite 500, Waltham, MA 02453
San Francisco, CA The Landmark at One Market, Suite 600, San Francisco, CA 94105
Washington, DC 1855 Pileford Drive, Suite 225, Rockville, MD 20850
Telephone: (781) 907 9000, (781) 907 9009, (415) 498 3700, (415) 498 3550, (301) 417 0999, (301) 417 9825
Facsimile: (781) 907 9000, (781) 907 9009, (415) 498 3700, (415) 498 3550, (301) 417 0999, (301) 417 9825

MARK	ISSUE DATE	DESCRIPTION
PERMIT	09/16/04	PERMIT SET
BD	05/17/04	BD SET

Issue Log



TRO
ARCHITECTURE
PLANNING
ENGINEERING
INTERIOR DESIGN
The Ritchie Organization
80 Bridge Street
Newton, MA 02458-1134
617-869-9400

Maine Medical Center
Pkg E - Garage Foundation and Precast
Portland, ME MMC Project No. 21845

Drawing Title
GARAGE PRECAST CONCRETE TRANSVERSE SECTION

Commission No. 4678 Date Issued 05/17/04
Scale 1/8"=1'-0" Sheet Number **PKG-E S312**
Drawn By SWW
Approved By JHT/JAZ
Discipline S312
Copyright © 2004 The Ritchie Organization