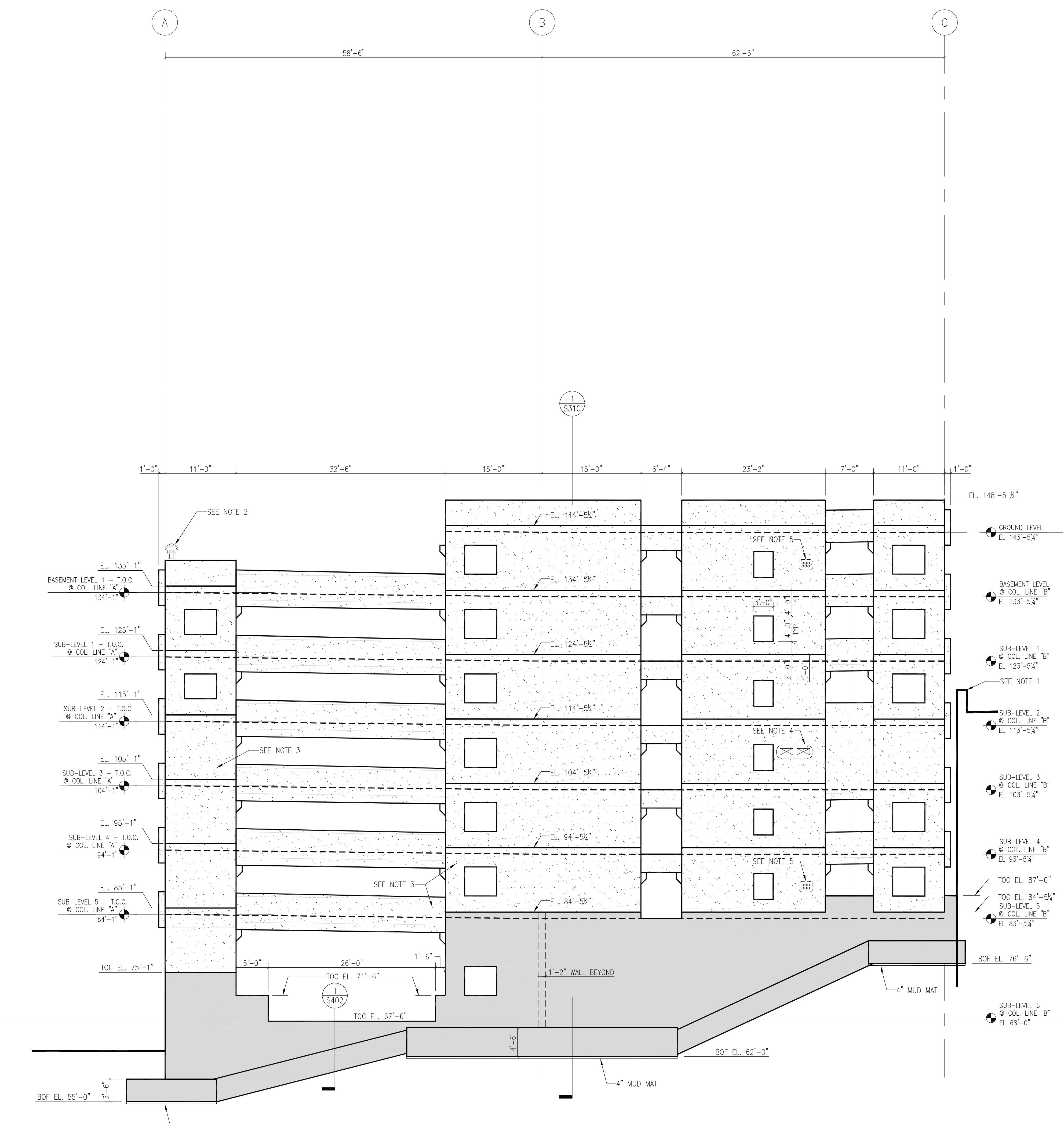
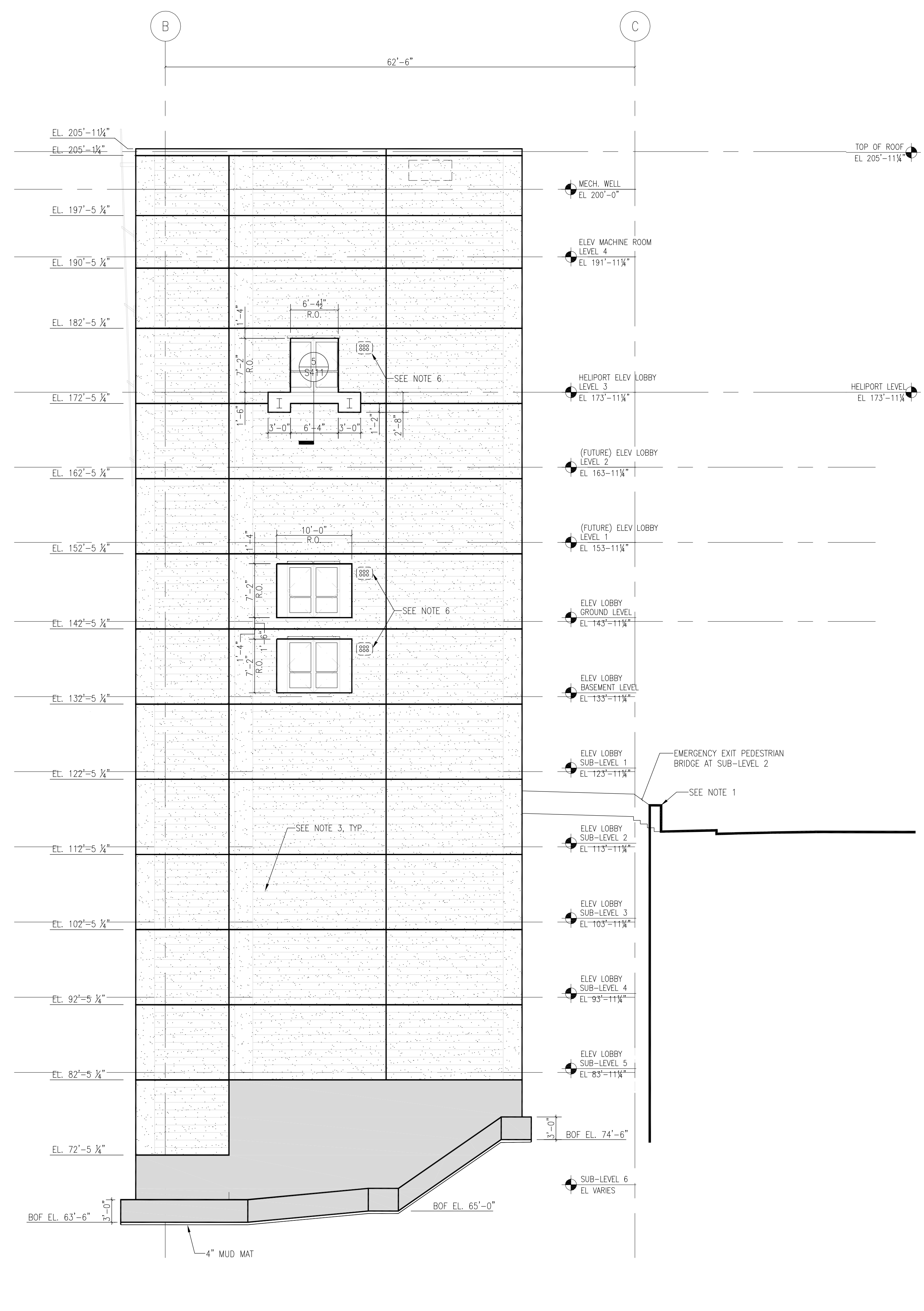


- General Notes:
- TOP OF NEW EARTH-RETENTION WALL NOT SHOWN FOR CLARITY. SEE DRAWINGS S600-S605, IN PACKAGE "D" FOR DETAILS OF EARTH-RETENTION SYSTEM.
 - SEE ARCH. DRAWINGS FOR DETAILS OF LIGHT FIXTURES ON TOP OF GARAGE, TYP.
 - SEE ARCH. DRAWINGS AND SPECIFICATIONS FOR DETAILS OF FINISHES ON PRECAST CONCRETE ELEMENTS.
 - TWO 2'x12" OPENINGS IN SHEAR WALLS FOR PASSAGE OF ELECTRICAL CONDUIT FROM ELECTRICAL ROOM TO CHASE AT SUB-LEVEL 3.
 - (6) 4" SLEEVES IN PRECAST CONCRETE SHEAR WALLS FOR PASSAGE OF CONDUIT FROM ELECTRICAL CLOSETS TO CHASE AT SUB-LEVEL 5 AND BASEMENT LEVEL.
 - SLEEVES TO BE CAST INTO PRECAST WALLS FOR PASSAGE OF UTILITY PIPES AND CONDUITS. SEE DRAWINGS BY OTHERS FOR SLEEVE SIZES, LOCATIONS, AND QUANTITIES.



1 GARAGE WEST ELEVATION-GRID LINE "1"
1/8" = 1'-0"



2 WEST ELEVATION AT STAIR NO. 1 / ELEVATOR
1/8" = 1'-0"

SGH
Simpson Gumpertz & Heger Inc.
Consulting Engineers

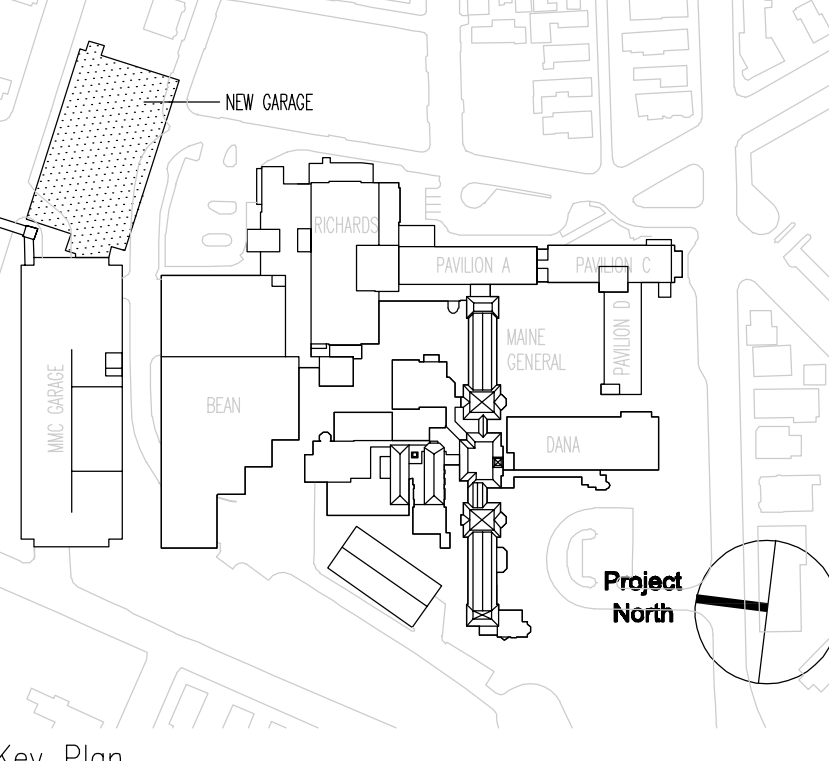
Boston, MA 41 Bayon Street, Suite 500, Telephone: (781) 907 9000
Waltham, MA 02453 Facsimile: (781) 907 9009

San Francisco, CA The Landmark at One Market, Suite 600, Telephone: (415) 498 3700
San Francisco, CA 94105 Facsimile: (415) 498 3550

Washington, DC 1885 Pboard Drive, Suite 225, Telephone: (301) 417 0999
Rockville, MD 20850 Facsimile: (301) 417 9825

MARK	ISSUE DATE	DESCRIPTION
PERMIT	09/16/04	PERMIT SET
BID	05/17/04	BID SET

Issue Log



TRO
ARCHITECTURE
PLANNING
ENGINEERING
INTERIOR DESIGN

The Ritchie Organization
80 Bridge Street
Newton, MA 02458-1154
617-869-9400

Maine Medical Center
Pkg E - Garage Foundation and Precast
Portland, ME MMC Project No. 21845

Drawing Title
**GARAGE
PRECAST CONCRETE
WEST ELEVATION**

Commission No. 4678 Date Issued 05/17/04
Scale 1/8"=1'-0" Sheet Number **PKG-E
S304**
Drawn By SWW
Approved By JHT/202
Discipline S304
Copyright © 2004 The Ritchie Organization