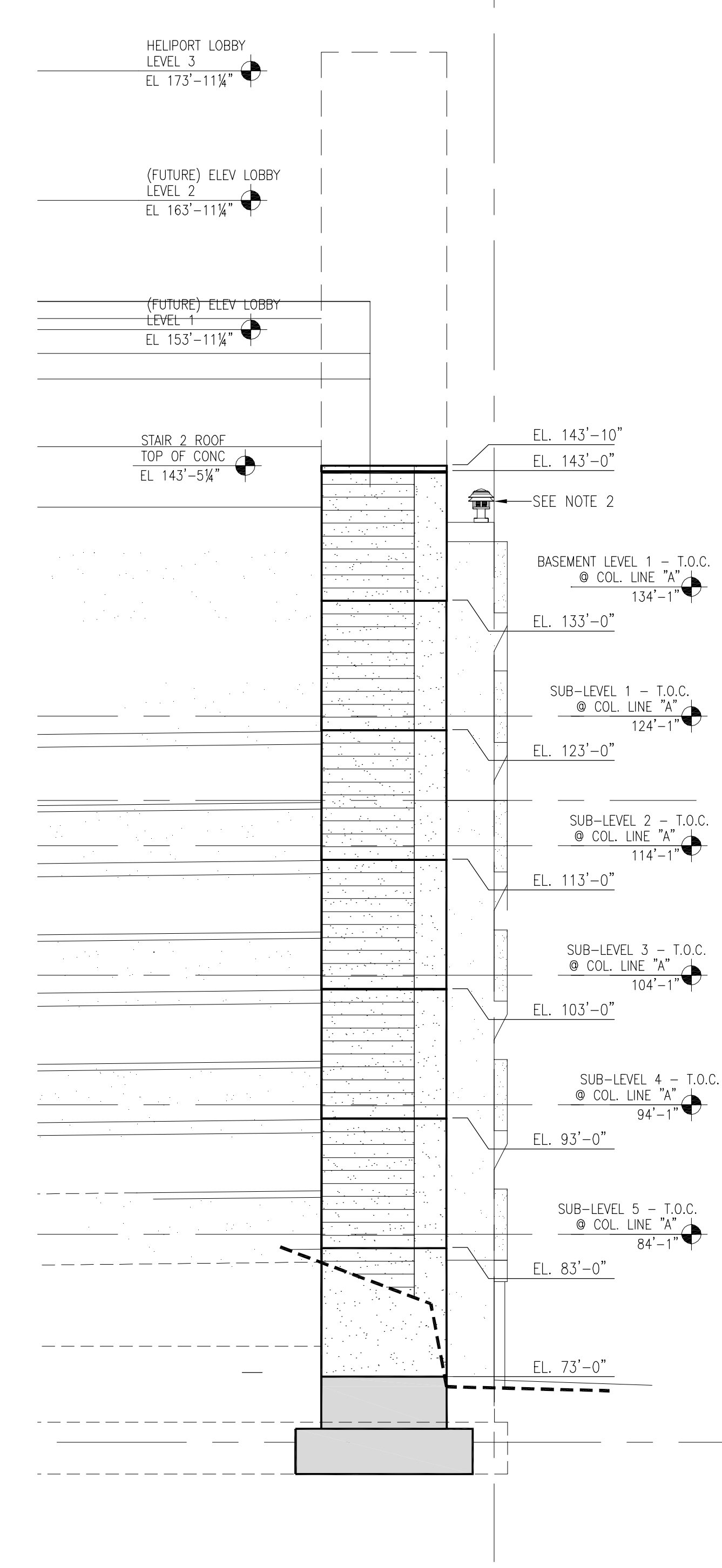


1 GARAGE EAST ELEVATION - GRID LINE 7
1/8" = 1'-0"

LEGEND

- CAST IN PLACE CONCRETE
- PRECAST CONCRETE



2 EAST ELEVATION AT STAIR NO. 2
1/8" = 1'-0"

- General Notes:
- TOP OF NEW EARTH-RETENTION WALL NOT SHOWN FOR CLARITY. SEE DRAWINGS S600-S605, IN PACKAGE "D" FOR DETAILS OF EARTH-RETENTION SYSTEM.
 - SEE ARCH. DRAWINGS FOR DETAILS OF LIGHT FIXTURES ON TOP OF GARAGE, TYP.
 - SEE ARCH. DRAWINGS AND SPECIFICATIONS FOR DETAILS OF FINISHES ON PRECAST CONCRETE ELEMENTS.

SGH
Simpson Gumpertz & Heger Inc.
Consulting Engineers

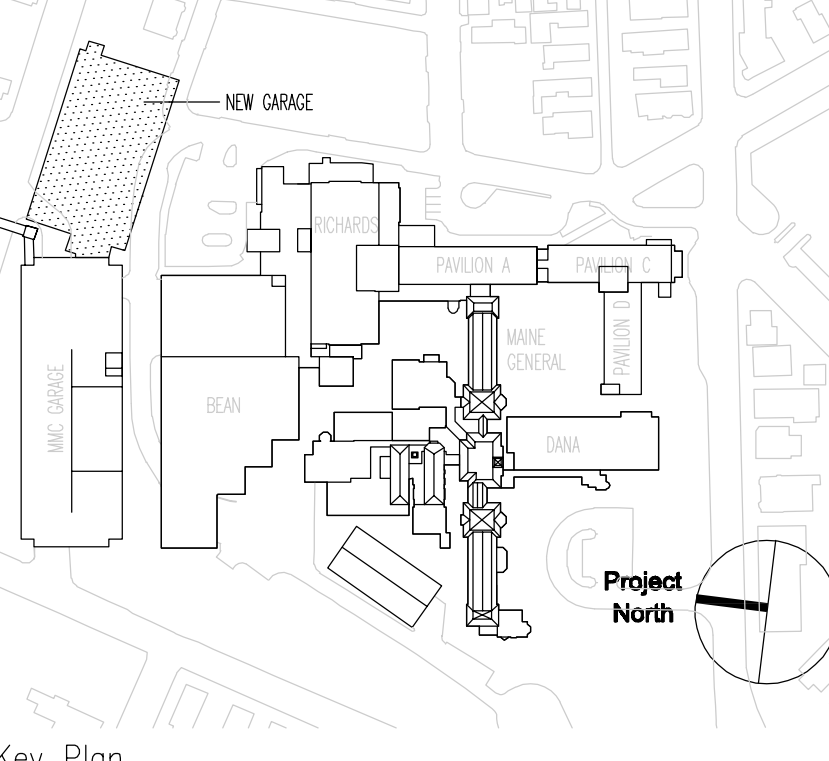
Boston, MA 41 Bayon Street, Suite 500, Waltham, MA 02453 Telephone: (781) 907 9000 Facsimile: (781) 907 9009

San Francisco, CA The Landmark at One Market, Suite 600, San Francisco, CA 94105 Telephone: (415) 498 3700 Facsimile: (415) 498 3550

Washington, DC 1835 Plooard Drive, Suite 225, Rockville, MD 20850 Telephone: (301) 417 0999 Facsimile: (301) 417 9825

MARK	ISSUE DATE	DESCRIPTION
PERMIT	09/16/04	PERMIT SET
BID	05/17/04	BID SET

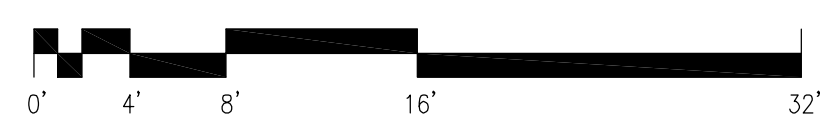
Issue Log



TRO
ARCHITECTURAL PLANNING ENGINEERING INTERIOR DESIGN
The Ritchie Organization
80 Bridge Street
Newton, MA 02459-1134
617-869-9400

Maine Medical Center
Pkg E - Garage Foundation and Precast
Portland, ME MMC Project No. 21845

Drawing Title
GARAGE PRECAST CONCRETE EAST ELEVATION



Commission No.	4678	Date Issued	05/17/04
Scale	1/8"=1'-0"	Sheet Number	PKG-E S303
Drawn By	SWW	Approved By	JHT/JLD
File Name	S303		
Copyright	© 2004 The Ritchie Organization		