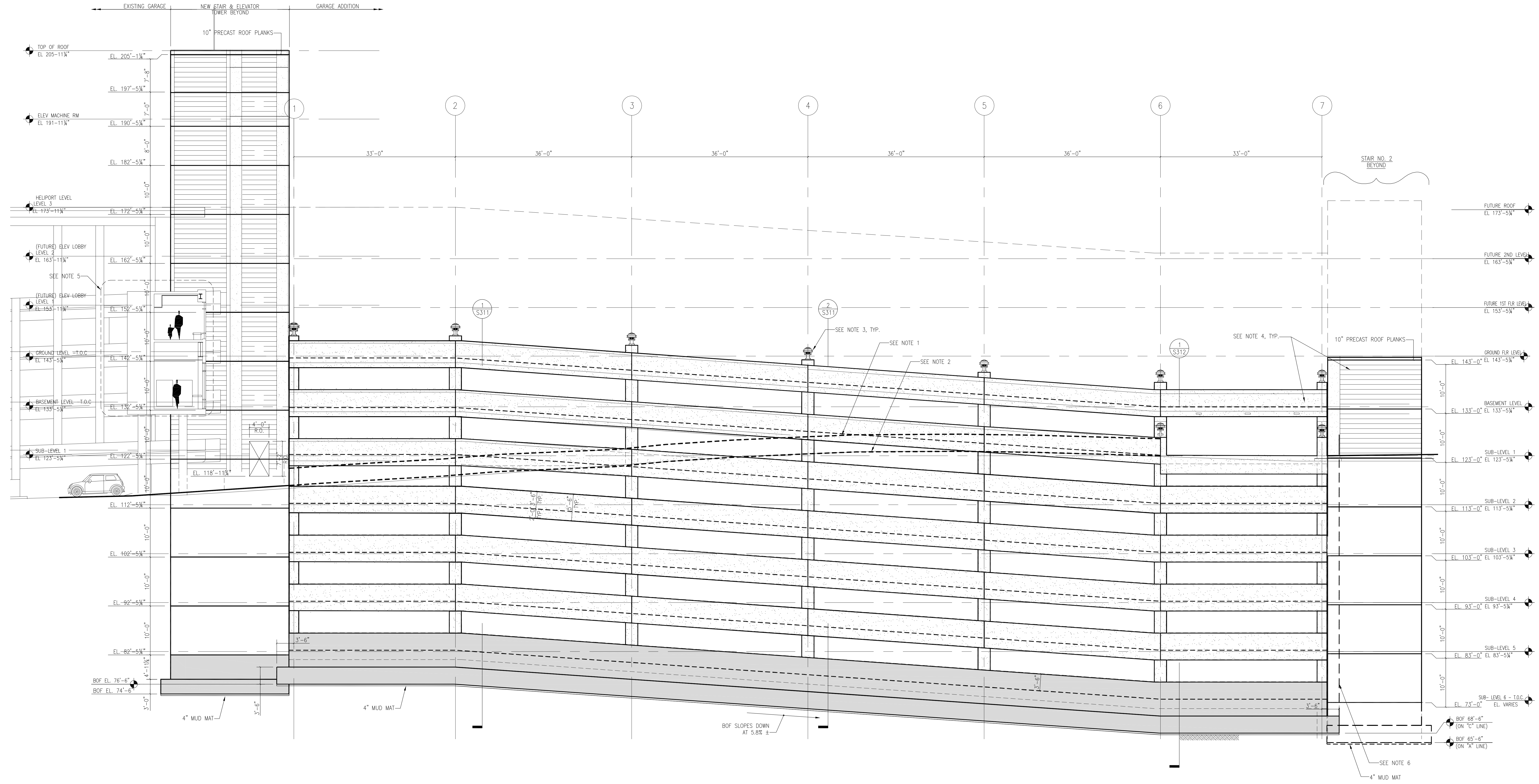


General Notes:

- TOP OF NEW EARTH-RETENTION WALL NOT SHOWN FOR CLARITY. SEE DRAWINGS S600-S605, IN PACKAGE D FOR DETAILS OF EARTH-RETENTION SYSTEM.
- FINAL GRADE OF CRESCENT STREET. SEE CIVIL DRAWINGS FOR FINAL GRADES.
- SEE ARCH. DRAWINGS FOR DETAILS OF LIGHT FIXTURES ON TOP OF PRECAST CONCRETE COLUMNS.
- SEE ARCH. DRAWINGS AND SPECIFICATIONS FOR DETAILS OF FINISHES ON PRECAST CONCRETE ELEMENTS.
- NEW PEDESTRIAN BRIDGE SPANNING OVER CRESCENT STREET. SEE PACKAGE "T" FOR DETAILS OF NEW BRIDGE.
- EARTH-RETENTION SYSTEM ALONG GRID LINE 7 NOT SHOWN FOR CLARITY.



1 GARAGE SOUTH ELEVATION-GRID LINE "C"  
1/8" = 1'-0"

**LEGEND**

CAST IN PLACE CONCRETE

PRECAST CONCRETE

**SGH**  
**Simpson Gumpertz & Heger Inc.**  
Consulting Engineers

Boston, MA 41 Bayon Street, Suite 500, Waltham, MA 02453  
Telephone: (781) 907 9000, Facsimile: (781) 907 9009

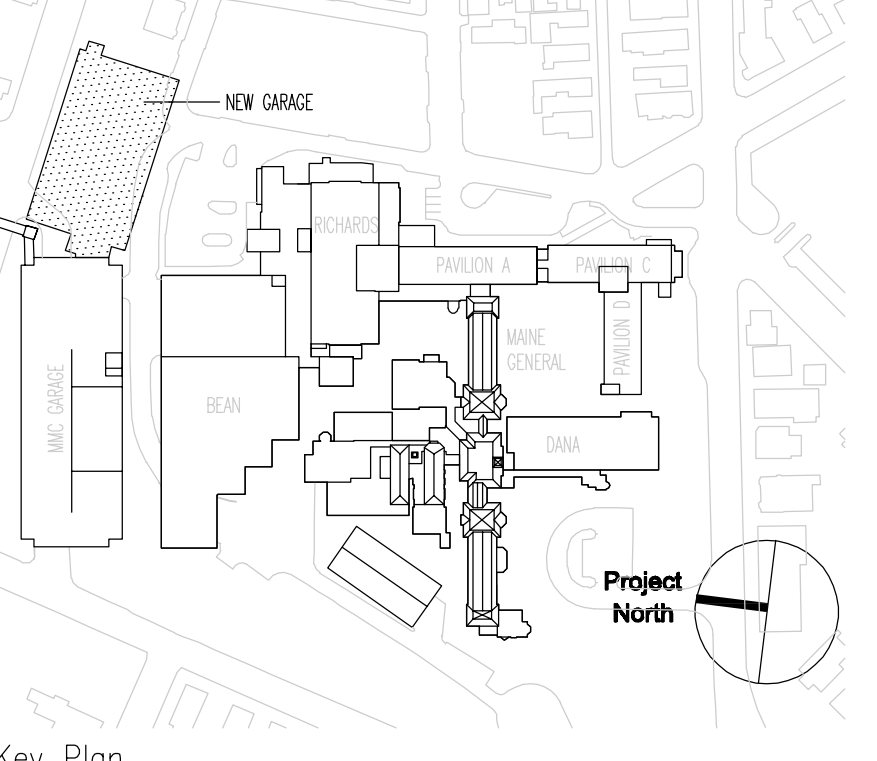
San Francisco, CA The Landmark at One Market, Suite 600, San Francisco, CA 94105  
Telephone: (415) 498 3700, Facsimile: (415) 498 3550

Washington, DC 1885 Ploors Drive, Suite 225, Rockville, MD 20850  
Telephone: (301) 417 0999, Facsimile: (301) 417 9825

www.sgh.com

MARK	ISSUE DATE	DESCRIPTION
PERMIT	09/16/04	PERMIT SET
BD	05/17/04	BD SET

ISSUE LOG



**TRO**  
ARCHITECTURE  
PLANNING  
ENGINEERING  
INTERIOR DESIGN

The Ritchie Organization  
80 Bridge Street  
Newton, MA 02459-1154  
617-869-9400

**Maine Medical Center**  
Pkg E - Garage Foundation and Precast  
Portland, ME MMC Project No. 21845

Drawing Title  
**GARAGE PRECAST CONCRETE SOUTH ELEVATION**



Commission No.	4678	Date Issued	05/17/04
Scale	1/8"=1'-0"	Sheet Number	PKG-E S302
Drawn By	SWW	Approved By	JHT/202
Checked By	S202	Copyright	© 2004 The Ritchie Organization