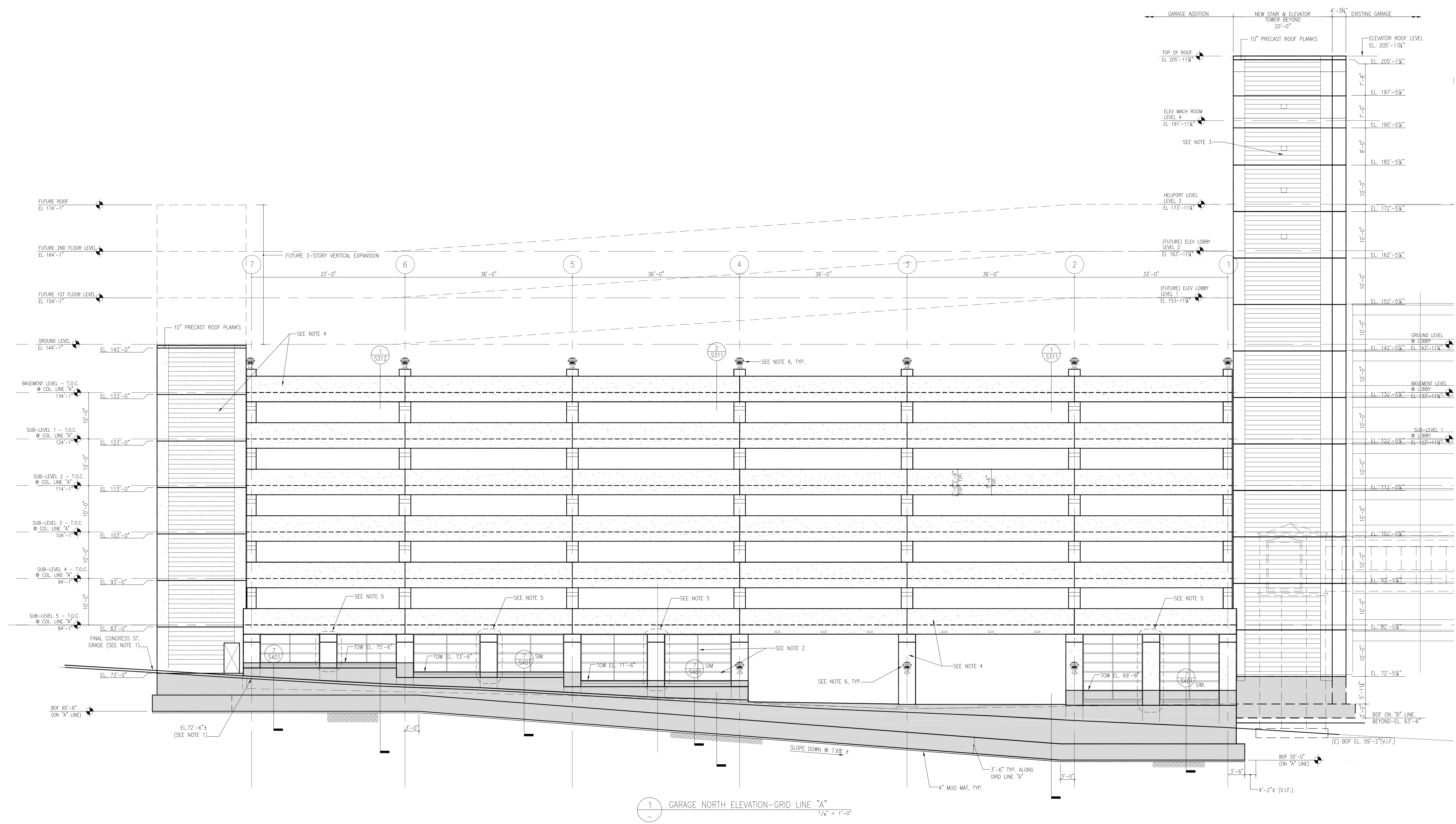


- General Notes:
- SEE CIVIL DRAWINGS FOR FINAL GRADE ELEVATIONS AT CENTER OF CONGRESS STREET ADJACENT TO NEW GARAGE.
 - SEE ARCH. DRAWINGS FOR DETAILS OF OPEN GRILLE FRAMING-TYP.
 - SEE ARCH. DRAWINGS FOR DETAILS OF FLAG POLE MOUNTED ON PRECAST CONCRETE ELEVATOR CORE.
 - SEE ARCH. DRAWINGS AND SPECIFICATIONS FOR DETAILS OF FINISHES ON PRECAST CONCRETE ELEMENTS.
 - ARCHITECTURAL CMU COLUMN WITH BRICK VENEER-SEE ARCH. DRAWINGS FOR DETAILS.
 - SEE ARCH. DRAWINGS FOR DETAILS OF LIGHT FIXTURES ON GARAGE FACADES.



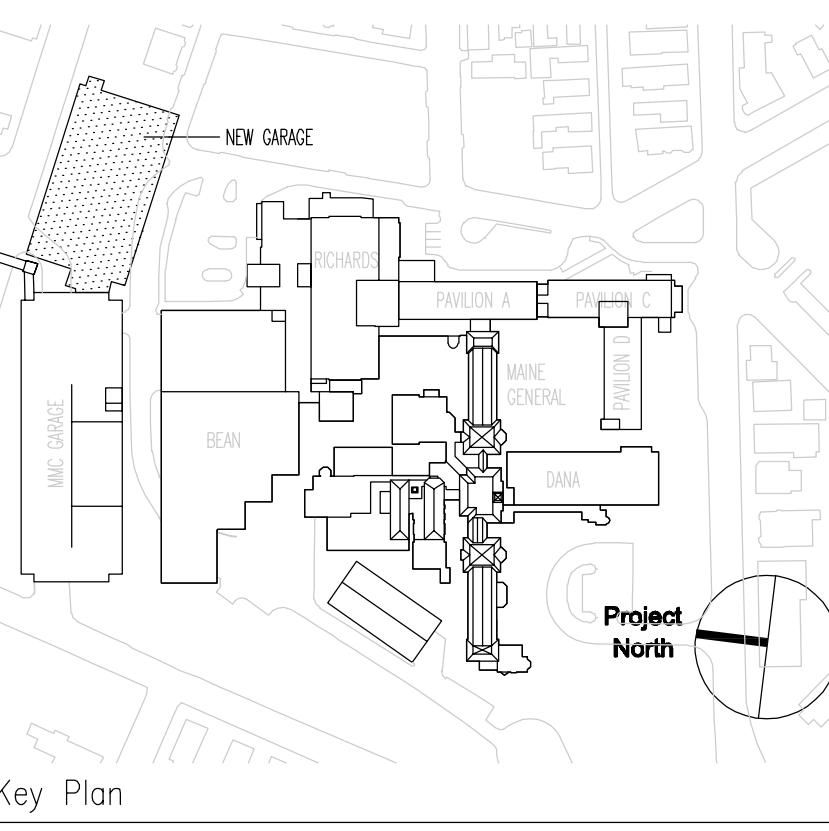
1 GARAGE NORTH ELEVATION-GRID LINE "A"
1/8" = 1'-0"

SGH
Simpson Gumpertz & Heger Inc.
Consulting Engineers

Boston, MA 41 Bayon Street, Suite 500, Telephone: (781) 907 9000, Fax: (781) 907 9009
San Francisco, CA The Landmark at One Market, Suite 600, Telephone: (415) 498 3700, Fax: (415) 498 3550
Washington, DC 1885 Pileard Drive, Suite 225, Telephone: (301) 417 0999, Fax: (301) 417 9825

MARK	ISSUE DATE	DESCRIPTION
PERMIT	09/16/04	PERMIT SET
BID	05/17/04	BID SET

Issue Log

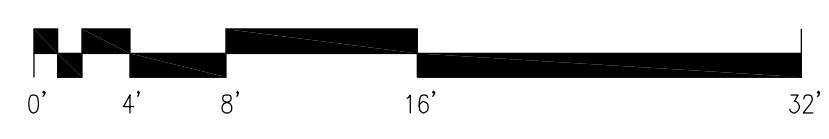


TRO
ARCHITECTURAL PLANNING
ENGINEERING
INTERIOR DESIGN

The Ritchie Organization
80 Bridge Street
Newton, MA 02458-1154
617-869-9400

Maine Medical Center
Pkg E - Garage Foundation and Precast
Portland, ME MMC Project No. 21845

Drawing Title
GARAGE PRECAST CONCRETE NORTH ELEVATION



Commission No.	4678	Date Issued	05/17/04
Scale	1/8"=1'-0"	Sheet Number	PKG-E S301
Drawn By	SWW	Approved By	JHT/JZJ
Checked By	JHT/JZJ	Discipline	Struct

Copyright © 2004 The Ritchie Organization