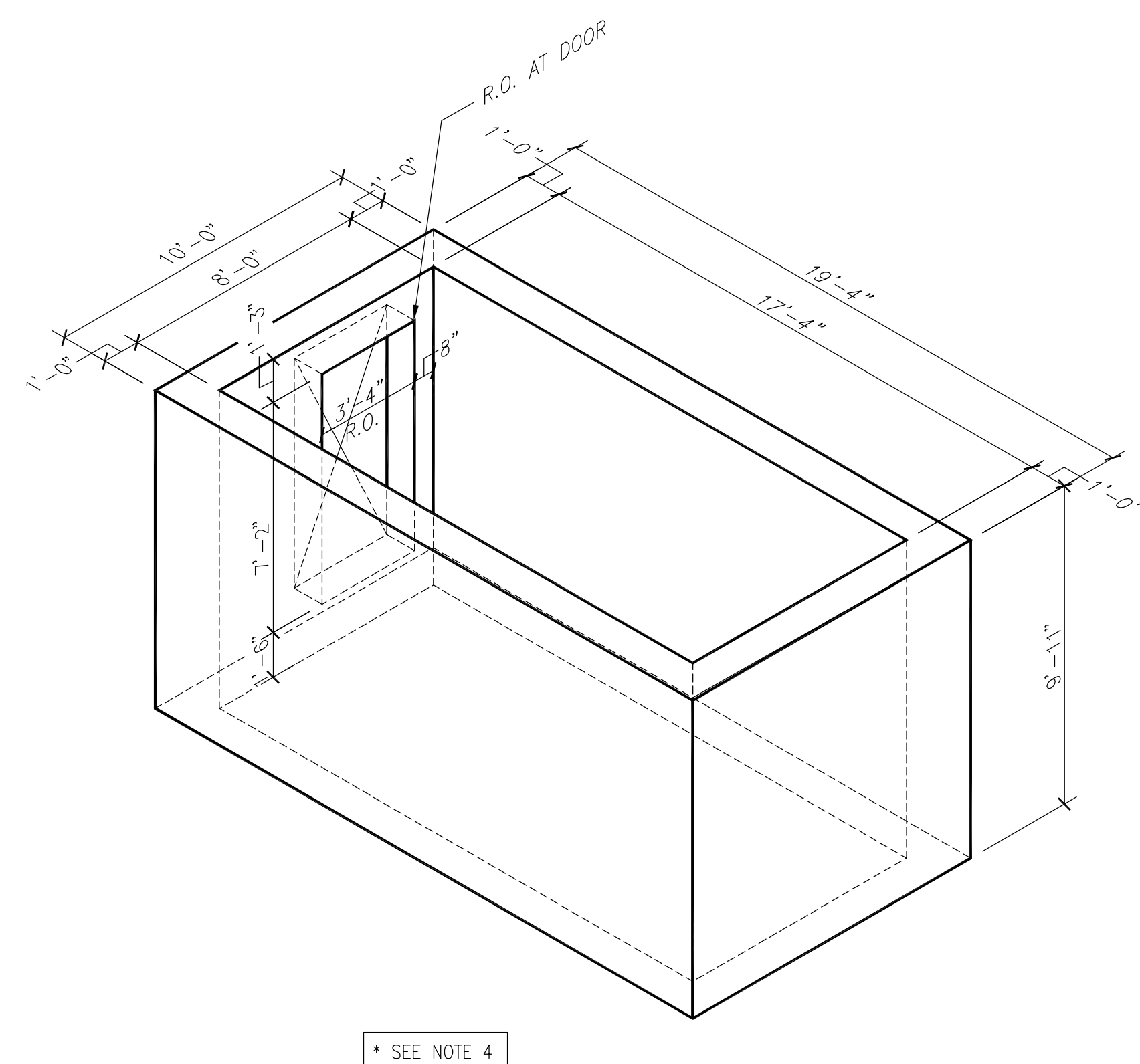


1 PRECAST CONCRETE—PART PLAN AT HELIPAD LEVEL 3 1/8" = 1'-0"

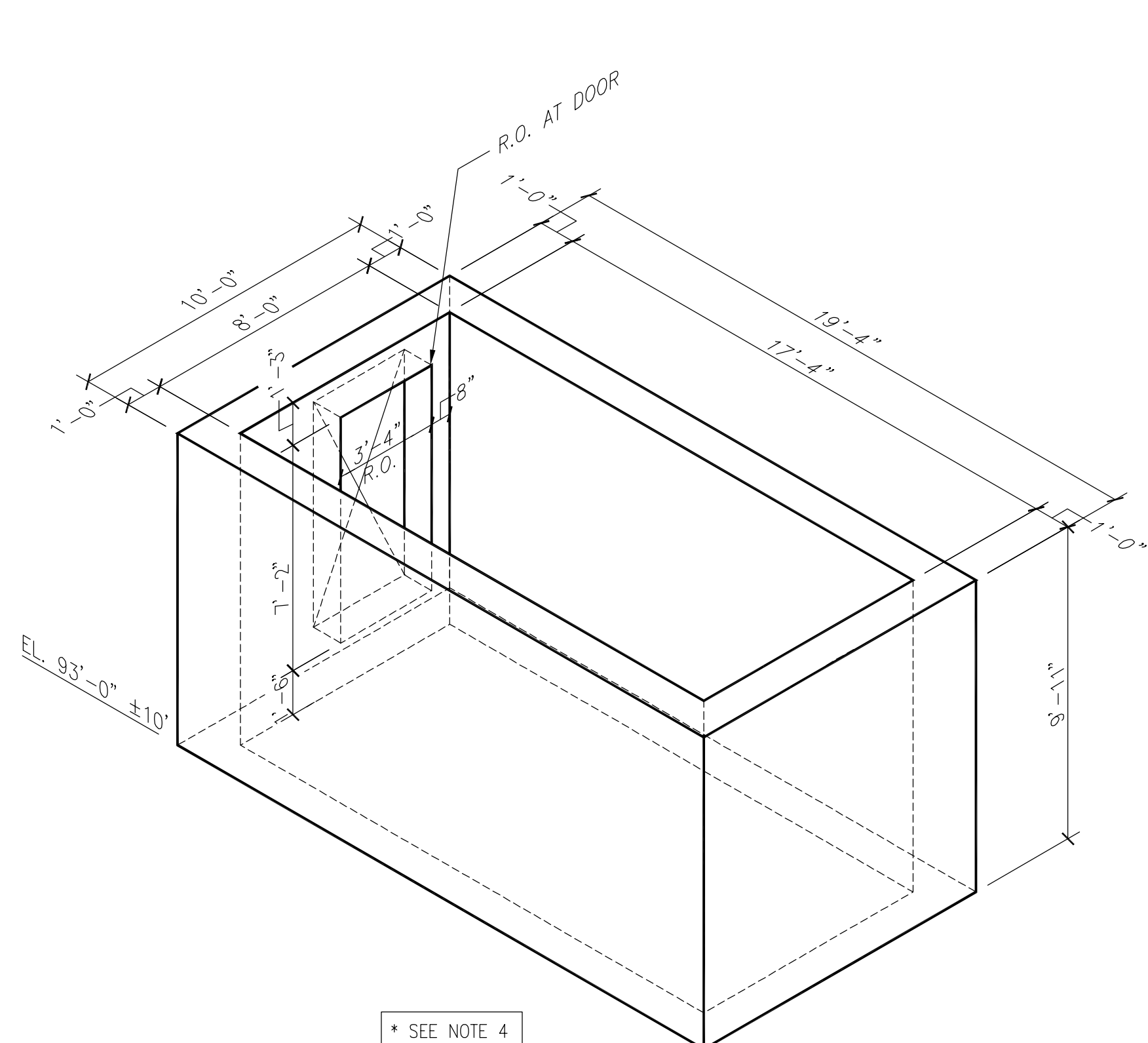
2 PRECAST CONCRETE—PART PLAN AT ELEVATOR MACHINE ROOM LEVEL 1/8" = 1'-0"

3 PRECAST CONCRETE—PART PLAN AT ELEVATOR MACHINE ROOM ROOF 1/8" = 1'-0"

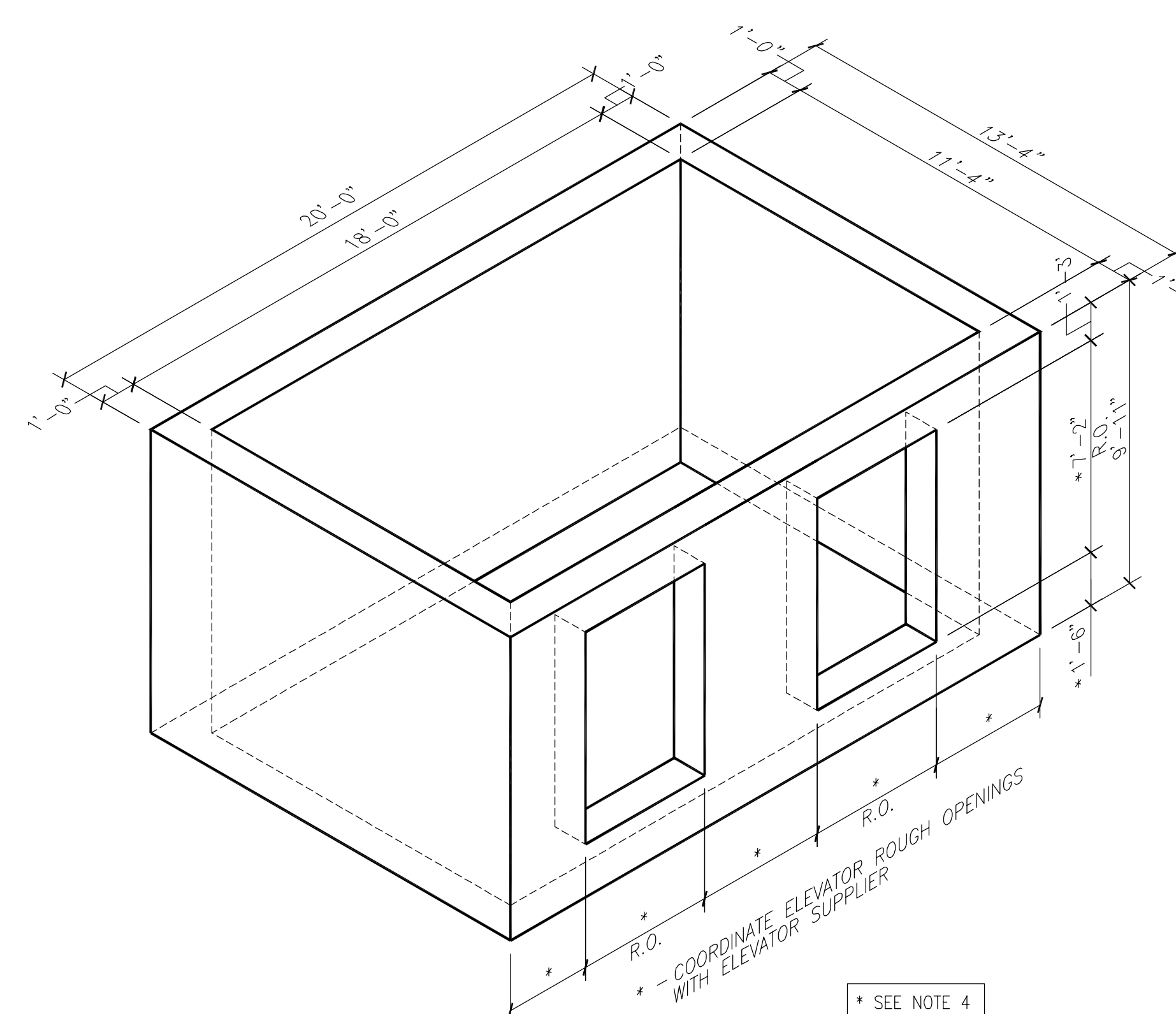
4 PRECAST CONCRETE—PART PLAN AT PEDESTRIAN BRIDGE—SUB-LEVEL 2 1/8" = 1'-0"



6 ISOMETRIC VIEW AT STAIR No. 1 PRECAST CONCRETE UNIT 1/4" = 1'-0"



7 ISOMETRIC VIEW AT STAIR No. 2 PRECAST CONCRETE UNIT 1/4" = 1'-0"



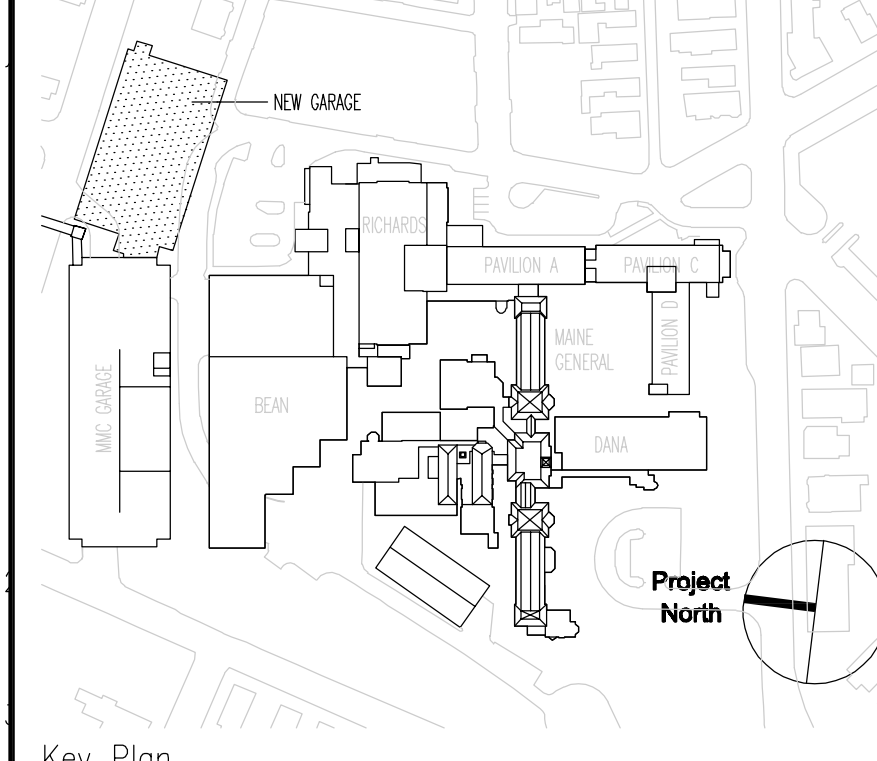
8 ISOMETRIC VIEW AT ELEVATOR PRECAST CONCRETE UNIT 1/4" = 1'-0"

- General Notes:
- ELEVATIONS:
 SUB-LEVEL 6: VARIES
 SUB-LEVEL 5: 83'-5 1/2"
 SUB-LEVEL 4: 93'-5 1/2"
 SUB-LEVEL 3: 103'-5 1/2"
 SUB-LEVEL 2: 113'-5 1/2"
 SUB-LEVEL 1: 123'-5 1/2"
 BASEMENT LEVEL: 133'-5 1/2"
 GROUND FLOOR LEVEL: 143'-5 1/2"
 FUTURE 1ST FLOOR LEVEL: 153'-5 1/2"
 FUTURE 2ND FLOOR LEVEL: 163'-5 1/2"
 FUTURE 3RD FLOOR LEVEL: 173'-5 1/2"
 - SEE PACKAGE "T" FOR HELIPAD DRAWINGS AND DETAILS OF LINK BRIDGE CONNECTING THE HELIPAD TO THE NEW CONCRETE STAIR AND ELEVATOR CORE IN THIS AREA.
 - SLEEVES TO BE CAST INTO PRECAST WALLS FOR PASSAGE OF UTILITY PIPES AND CONDUITS. SEE DRAWINGS BY OTHERS FOR SLEEVE SIZES, LOCATIONS AND QUANTITIES.
 - STAIR AND ELEVATOR CORES ARE SHOWN AS A PRE-FABRICATED 4-SECT MODULAR BOX STACKED VERTICALLY. PRECAST FABRICATOR MAY ELECT TO DESIGN THESE ELEMENTS USING INDIVIDUAL FLAT WALL PANELS IF THEY CAN SHOW, VIA STRUCTURAL CALCULATIONS, THAT THE SYSTEM WORKS AND CAN BE DETAILED ADEQUATELY.

SGH
Simpson Gumpertz & Heger Inc.
 Consulting Engineers
 Boston, MA 41 Bayon Street, Building 1, Suite 500, Waltham, MA 02453 Telephone: (781) 907 9000 Facsimile: (781) 907 9009
 San Francisco, CA The Landmark at One Market, Suite 600, San Francisco, CA 94105 Telephone: (415) 988 3700 Facsimile: (415) 988 3550
 Washington, DC 1855 Plooard Drive, Suite 225, Rockville, MD 20850 Telephone: (301) 417 0999 Facsimile: (301) 417 9825

MARK	ISSUE DATE	DESCRIPTION
PERMIT	09/16/04	PERMIT SET
BID	05/17/04	BID SET

Issue Log



TRO
 ARCHITECTURE
 PLANNING
 ENGINEERING
 INTERIOR DESIGN
 The Ritchie Organization
 80 Bridge Street
 Newton, MA 02458-1154
 617-969-9400

Maine Medical Center
 Pkg E - Garage Foundation and Precast
 Portland, ME MMC Project No. 21845

Drawing Title: **GARAGE ELEVATOR/STAIR PART PLAN PRECAST CONCRETE**

Commission No. 4678 Date Issued 05/17/04
 Scale 1/8" = 1'-0" Sheet Number **PKG-E S211**
 Drawn By SWW
 Approved By JHT/JLL
 Discipline 5211
 Copyright © 2004 The Ritchie Organization