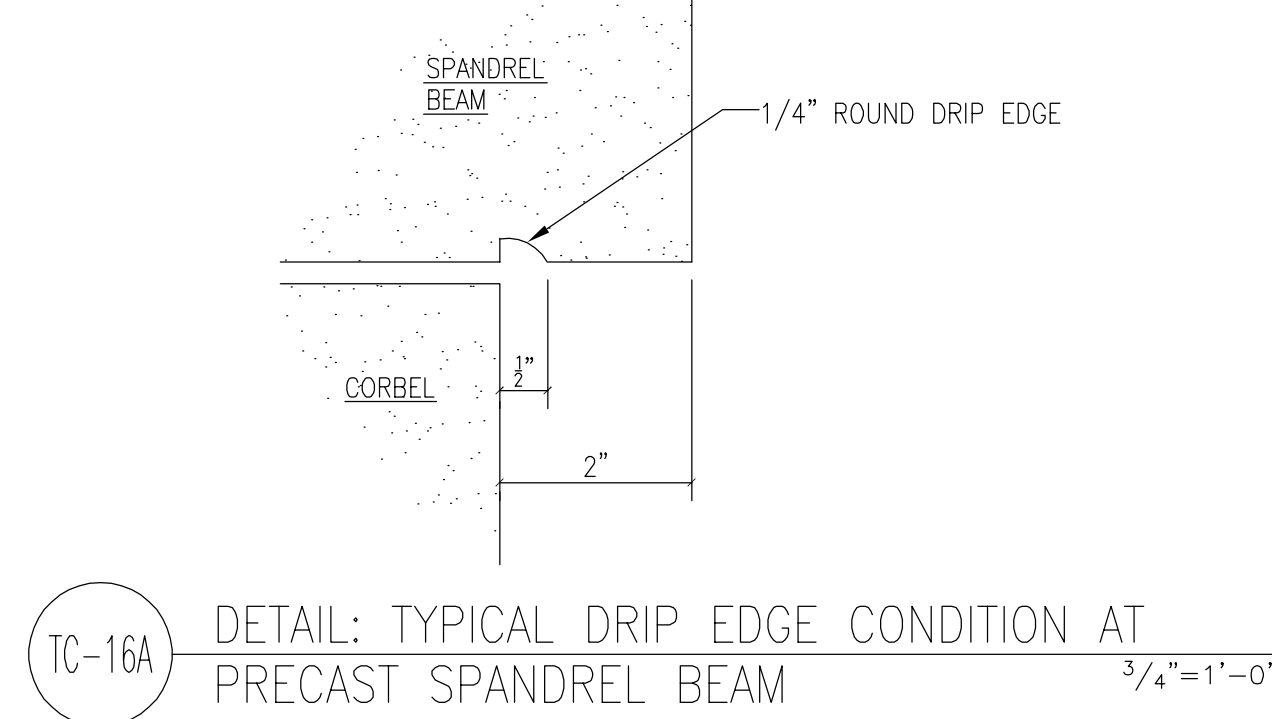
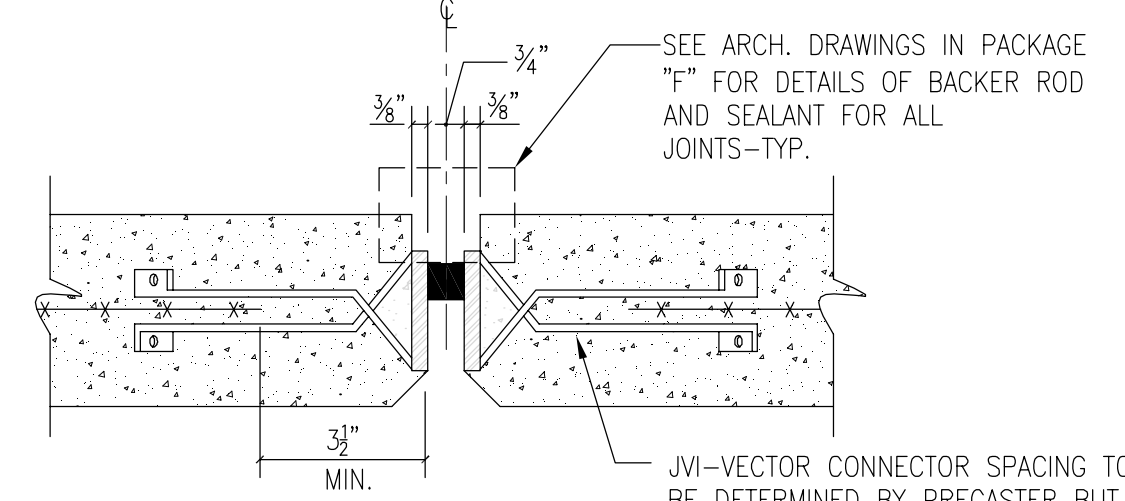


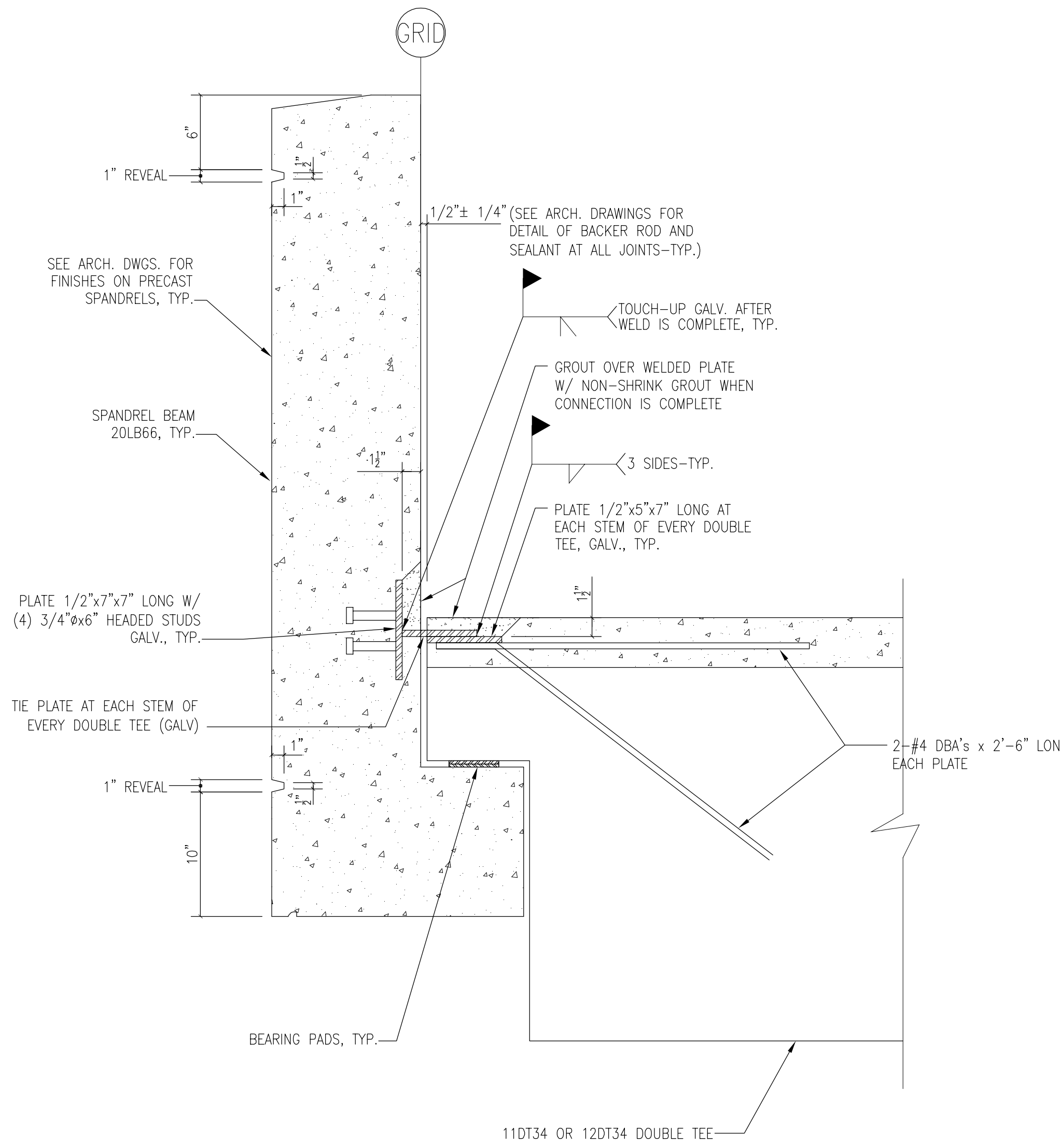
TC-16 ELEVATION: RELATIONSHIP BETWEEN SPANDREL, DOUBLE TEE, AND PRECAST WALL/COL. 3/4" = 1'-0"



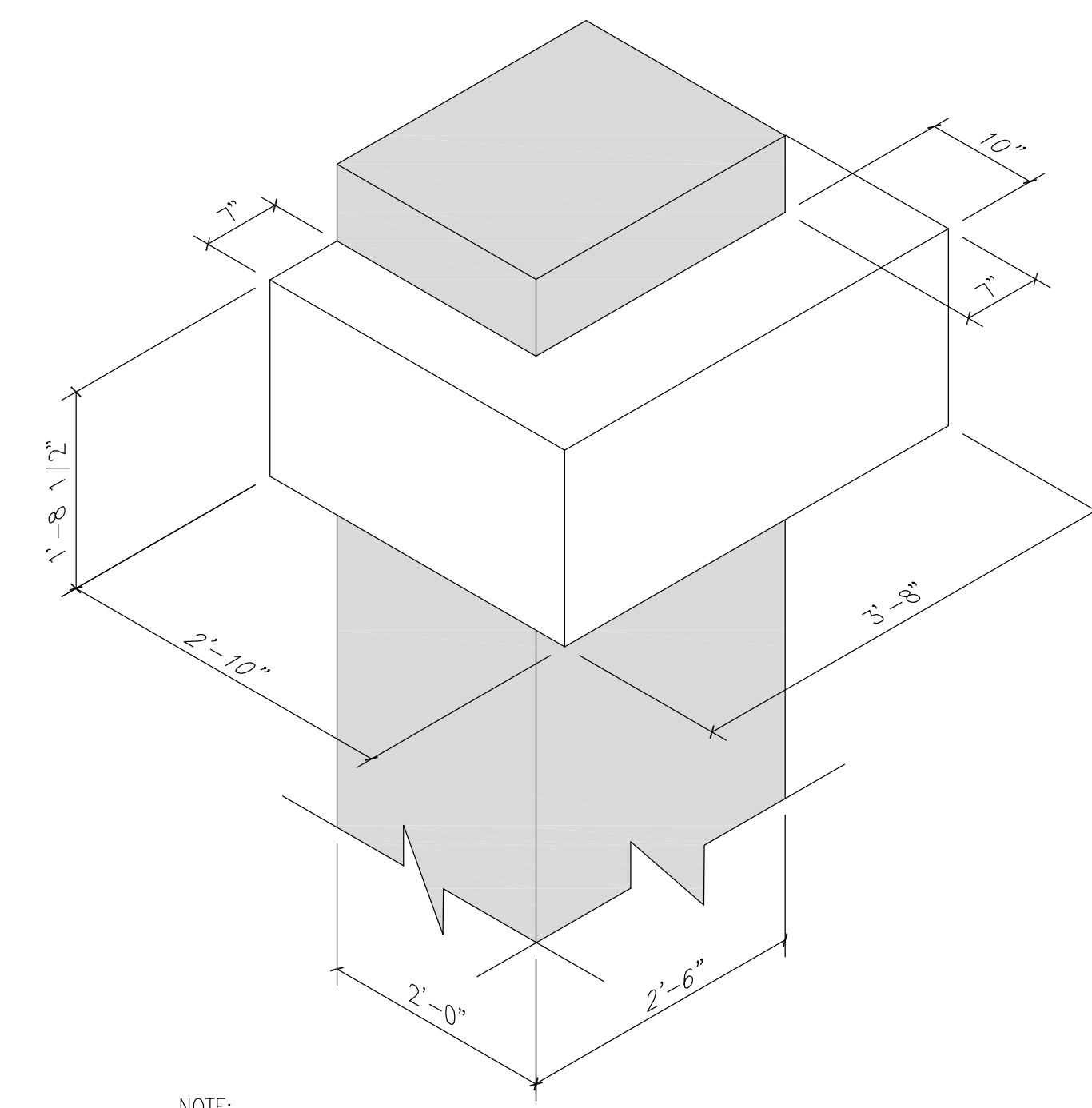
TC-16A DETAIL: TYPICAL DRIP EDGE CONDITION AT PRECAST SPANDREL BEAM 3/4" = 1'-0"



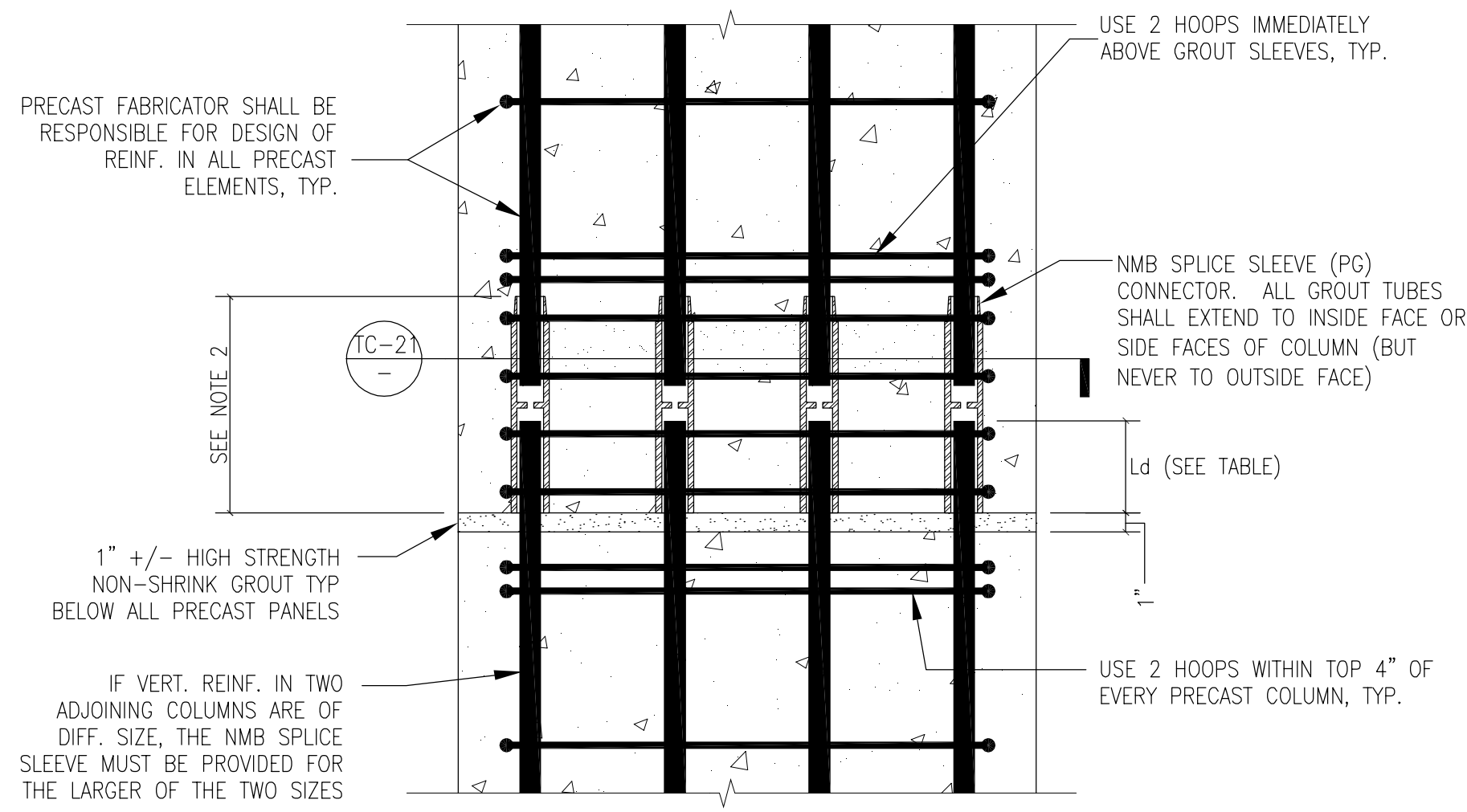
TC-17 DETAIL: PRECAST CONCRETE DOUBLE TEE FLANGE CONNECTION 3/4" = 1'-0"



TC-18 SECTION: TOP FLANGE CONNECTION AT END OF DOUBLE TEE TO SPANDREL BEAM 1 1/2" = 1'-0"



TC-19 ISOMETRIC VIEW PRECAST COLUMNS AT SUB-LEVEL 6, NORTH WALL 3/4" = 1'-0"

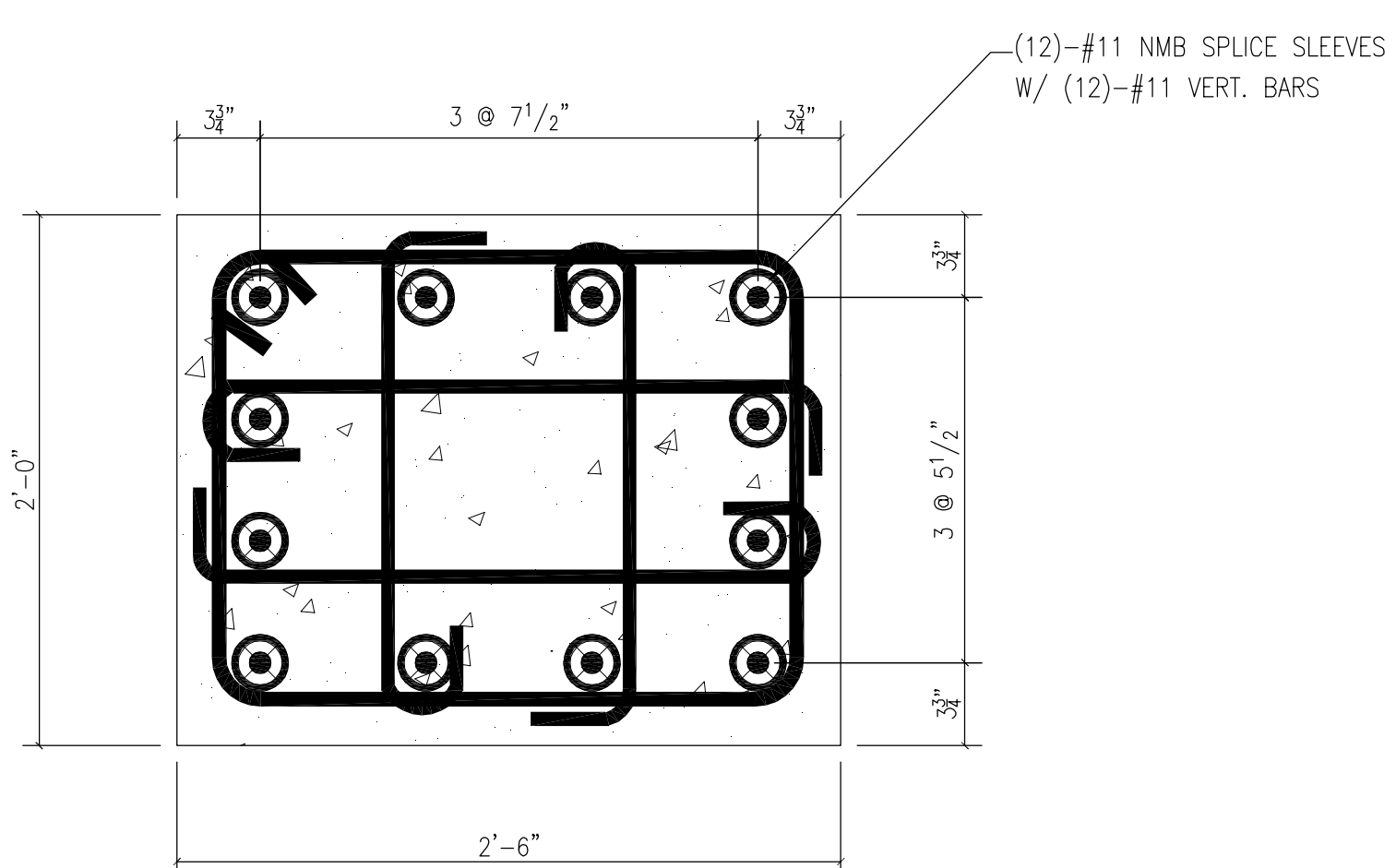


TC-20 DETAIL: TYPICAL PRECAST CONCRETE COLUMN SPLICE 1 1/2" = 1'-0"

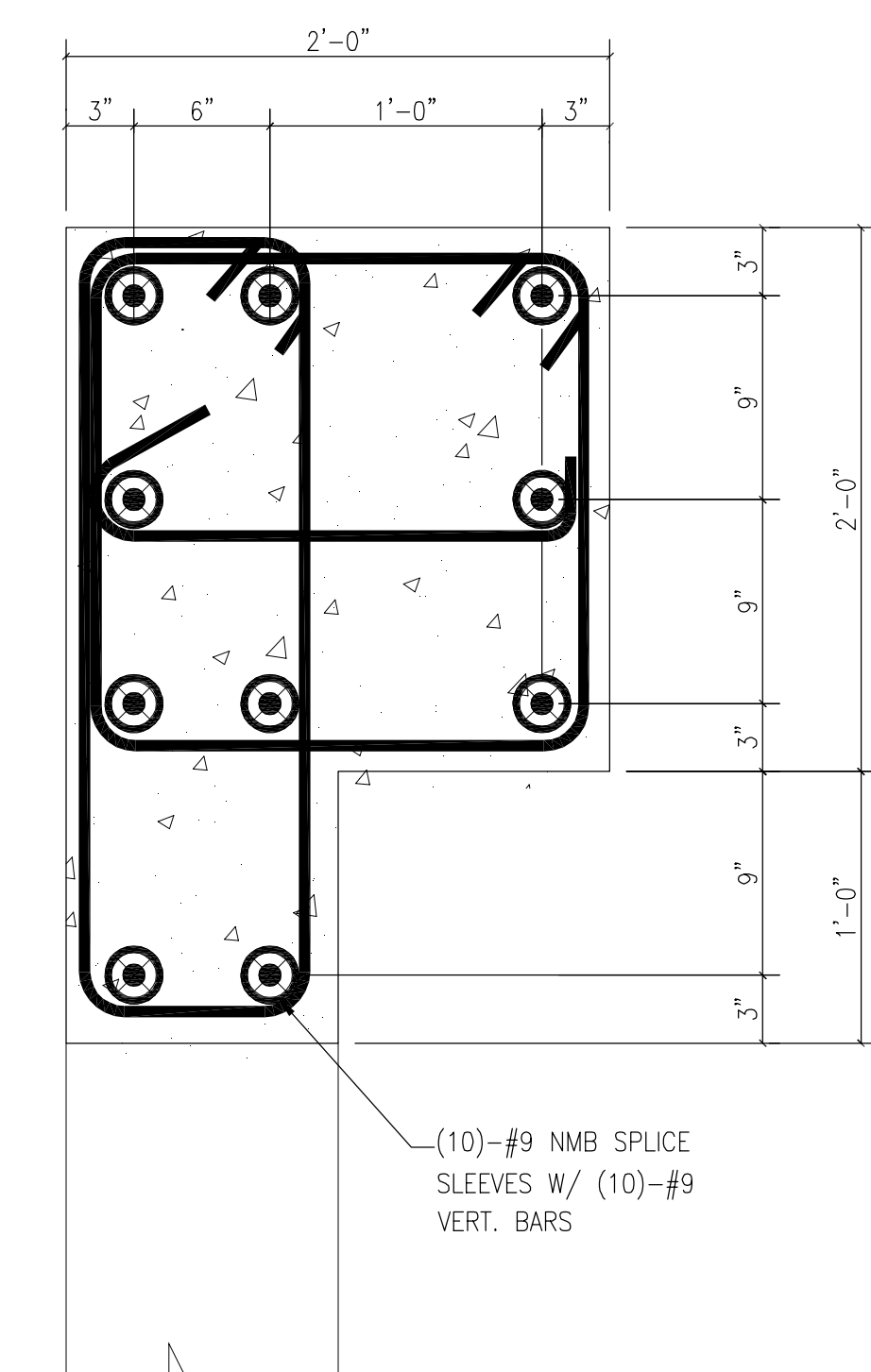
TOLERANCE TABLE: NMB SPLICE SLEEVE DIMENSIONS

DOWEL BAR SIZE	NOMINAL BAR DIAMETER (N)	INSIDE DIAMETER OF NMB SPLICE SLEEVE (N)	EMBEDMENT LENGTH OF DOWEL INTO SPLICE SLEEVE Ld (N)
#5	0.625	1.26	4.5+/-0.4
#6	0.75	1.42	5.3+/-0.4
#7	0.875	1.73	6.1+/-0.4
#8	1.00	1.89	7.0+/-0.5
#9	1.28	2.01	7.9+/-0.5
#10	1.42	2.16	8.7+/-0.5
#11	1.41	2.32	9.5+/-0.5

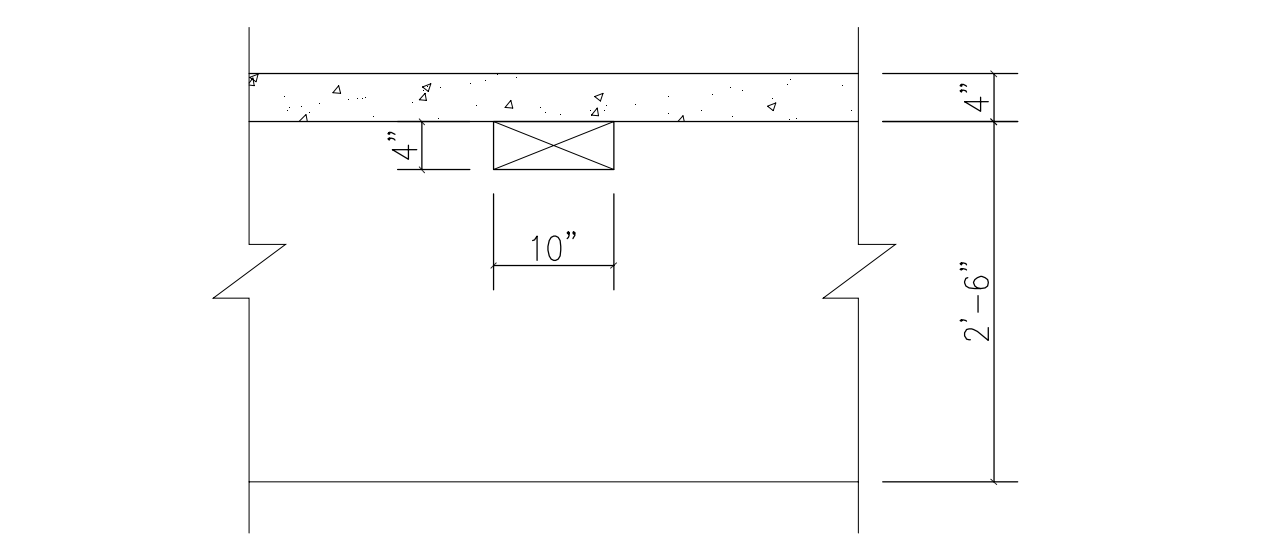
- NOTE TO BIDDERS:
- DOWELS EXTENDING FROM TOP OF C.I.P. FOUNDATION WALLS & COLUMN PEDESTALS SHALL BE LOCATED USING A TEMPLATE PROVIDED BY THE PRECAST MANUFACTURER. ENSURE THAT THE DOWELS FIT INTO THE NMB SPLICE-SLEEVES EMBEDDED IN THE PRECAST PANELS AS REQUIRED TO ACHIEVE FULL SPLICE STRENGTH. SEE TABLE FOR REQUIRED EMBEDMENT LENGTH OF DOWELS INTO SPLICE SLEEVES.
 - PRECAST FABRICATOR MAY ELECT TO USE SMALLER DIAMETER HOOPS AT A TIGHTER SPACING WHERE NMB SPLICE SLEEVES OCCUR.



TC-21 TYPICAL PRECAST CONCRETE COLUMN DETAIL AT SUB-LEVEL 6 1 1/2" = 1'-0"



TC-22 TYPICAL PRECAST CORNER SHEAR WALL WITH INTEGRAL COLUMN DETAIL AT SUB-LEVEL 6 1 1/2" = 1'-0"



TC-23 DETAIL: DOUBLE-TEE FLANGE BOXOUTS N.T.S.

SGH
Simpson Gumpertz & Heger Inc.
Consulting Engineers

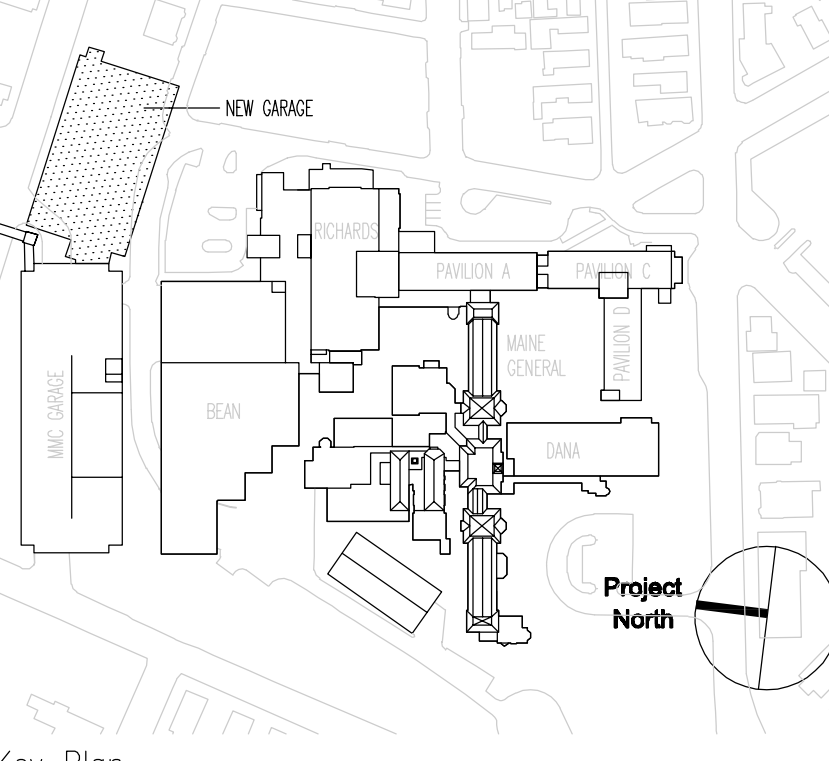
Boston, MA 41 Bayon Street, Building 1, Suite 500, Waltham, MA 02453
Telephone: (781) 907 9000, Facsimile: (781) 907 9009

San Francisco, CA The Landmark at One Market, Suite 600, San Francisco, CA 94105
Telephone: (415) 498 3700, Facsimile: (415) 498 3550

Washington, DC 1885 Ploard Drive, Suite 225, Rockville, MD 20850
Telephone: (301) 417 0999, Facsimile: (301) 417 9825

MARK	ISSUE DATE	DESCRIPTION
PERMIT	09/16/04	PERMIT SET
BID	05/17/04	BID SET

Issue Log



TRO
ARCHITECTURE
PLANNING
ENGINEERING
INTERIOR DESIGN

The Ritchie Organization
80 Bridge Street
Newton, MA 02459-1134
617-869-9400

Maine Medical Center
Pkg E - Garage Foundation and Precast
Portland, ME MMC Project No. 21845

Drawing Title: **TYPICAL CONCRETE DETAILS (SHEET 2 OF 2)**

Commission No. 4678 Date Issued 05/17/04
Scale AS NOTED Sheet Number **PKG-E**
Drawn By SWW
Approved By JHT/JAZ
Designer S102
Copyright © 2004 The Ritchie Organization **S102**