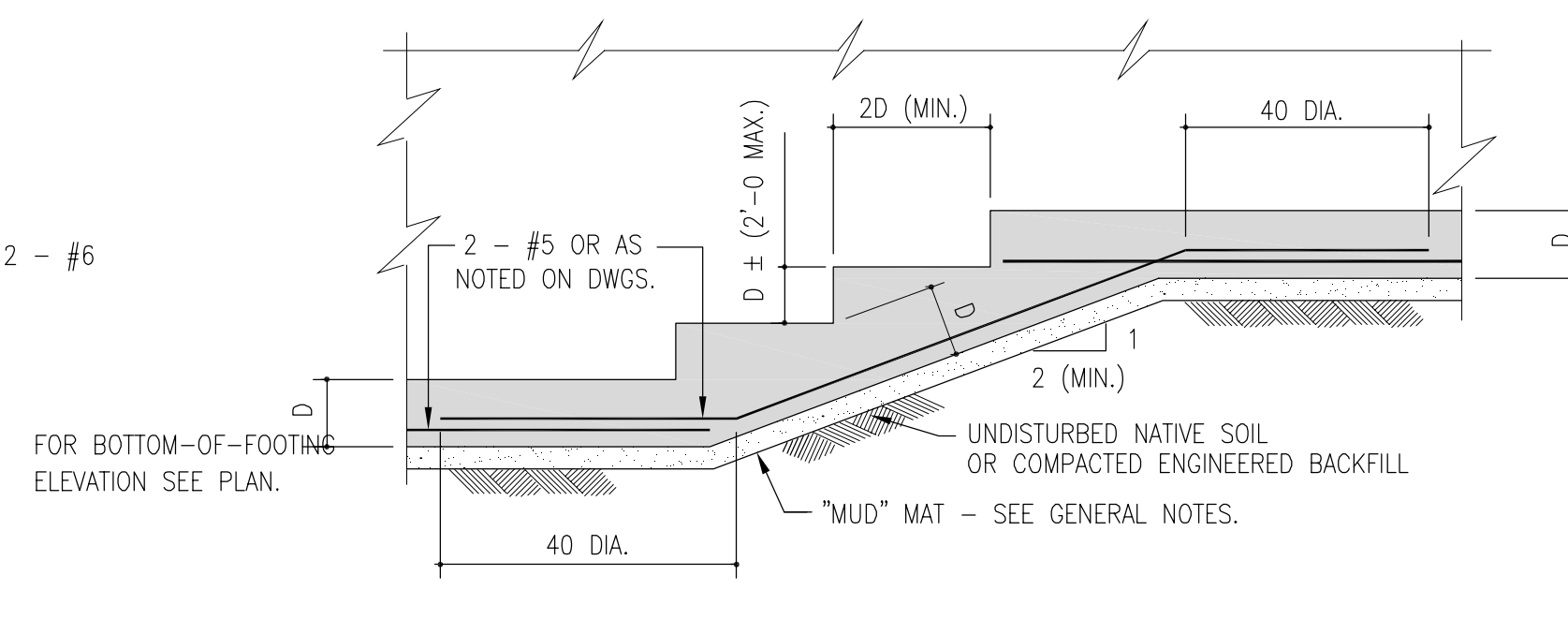
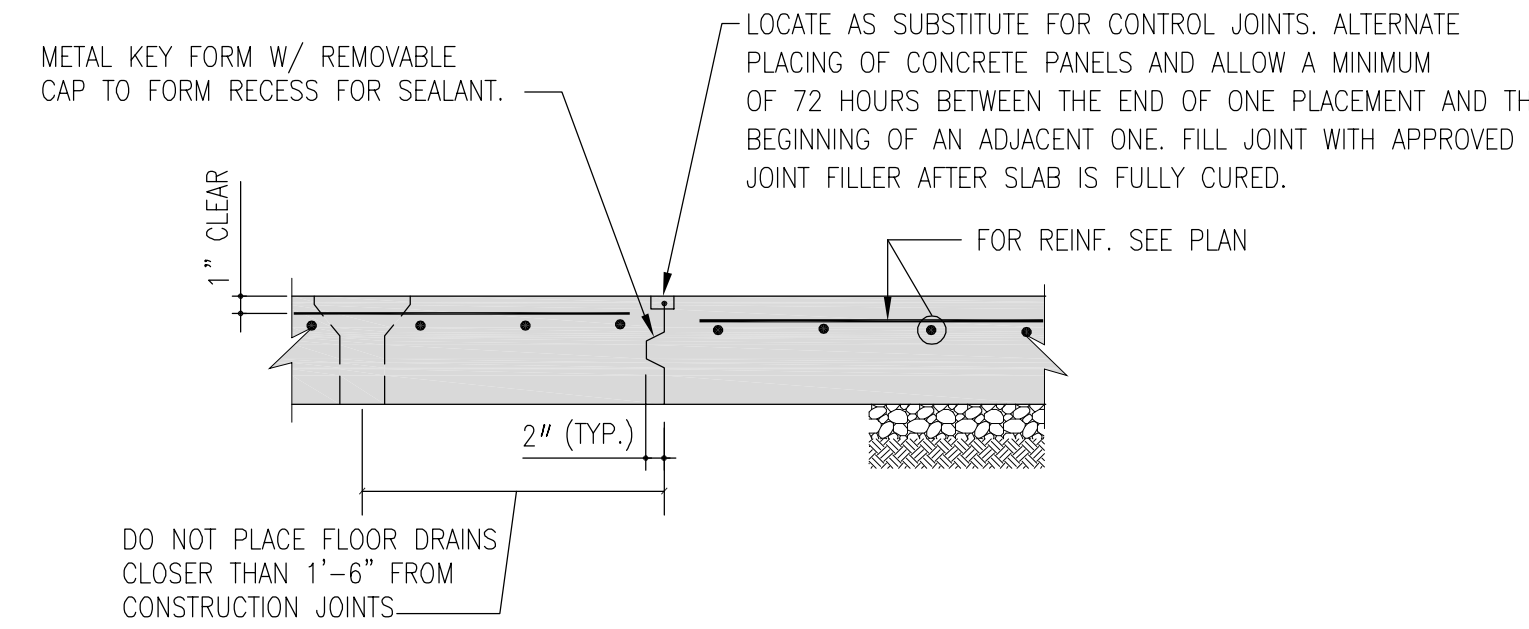


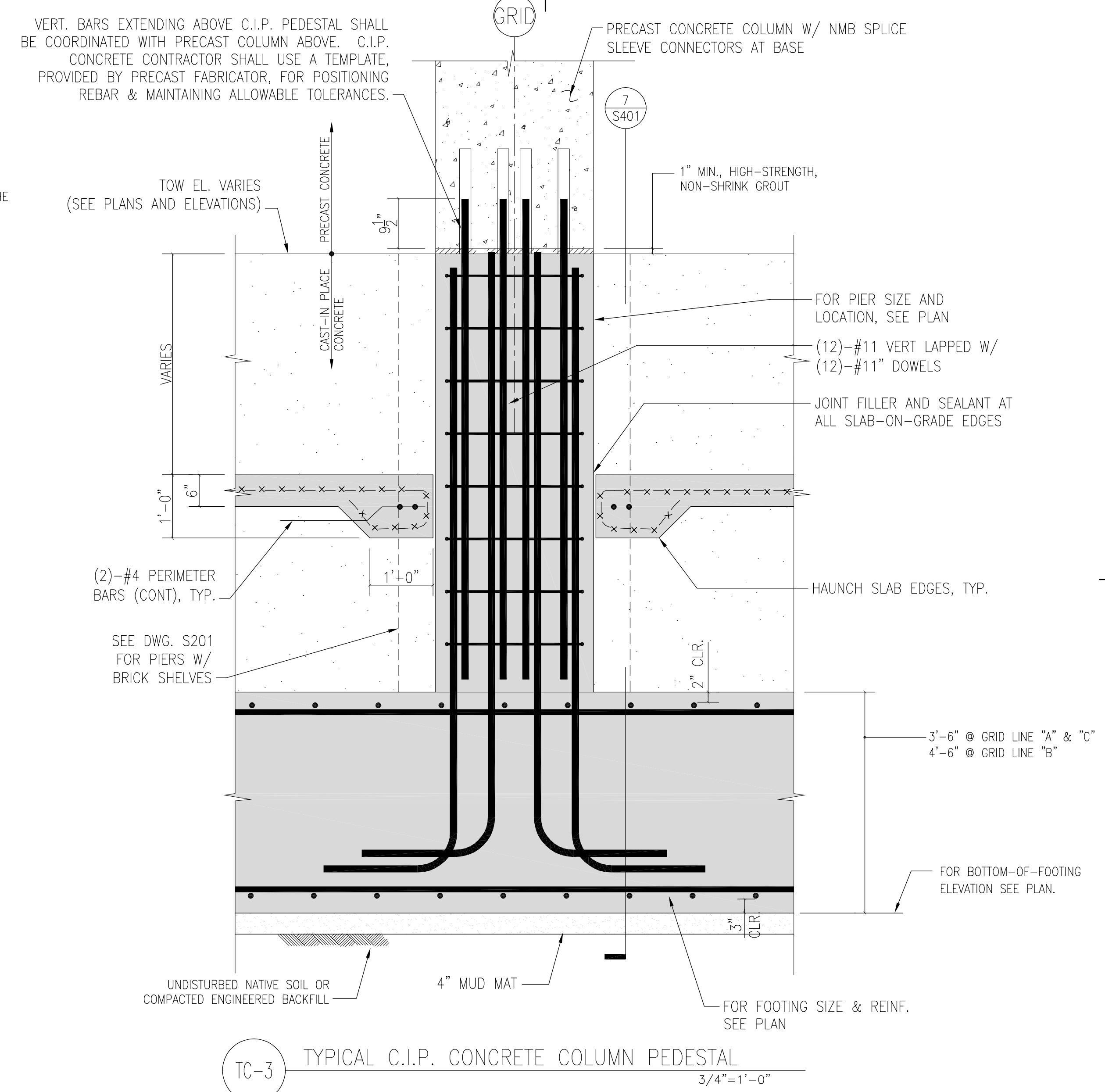
TC-1 TYPICAL CONCRETE WALL CORNER REINFORCEMENT
3/4"=1'-0"



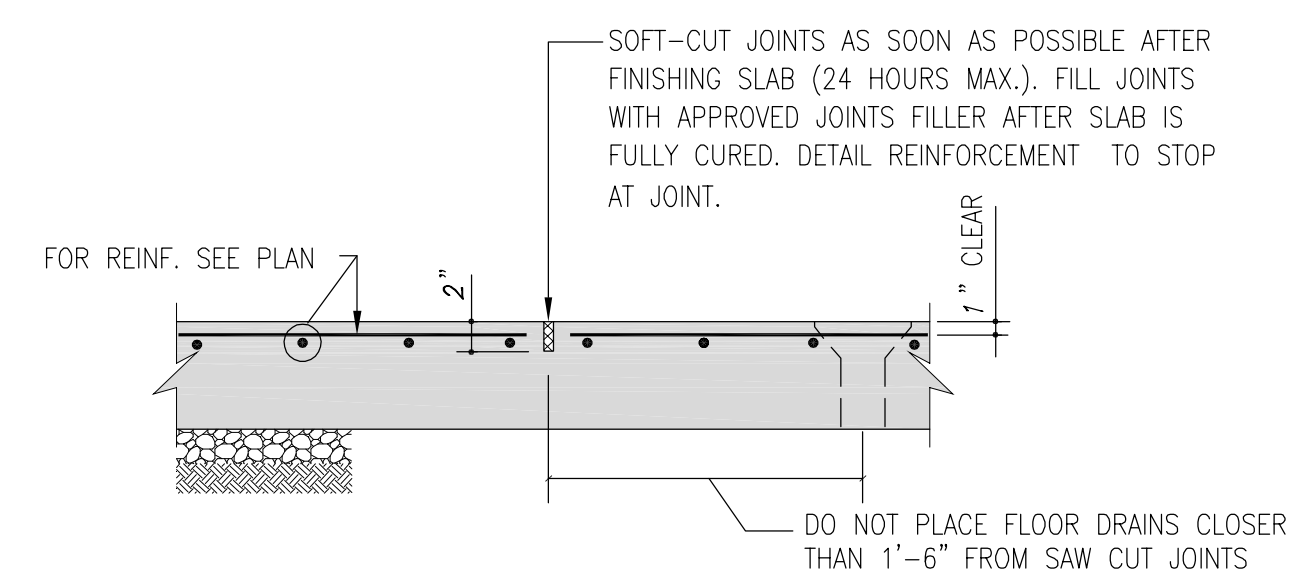
TC-2 CONTINUOUS STEPPED WALL FOOTING
3/4"=1'-0"



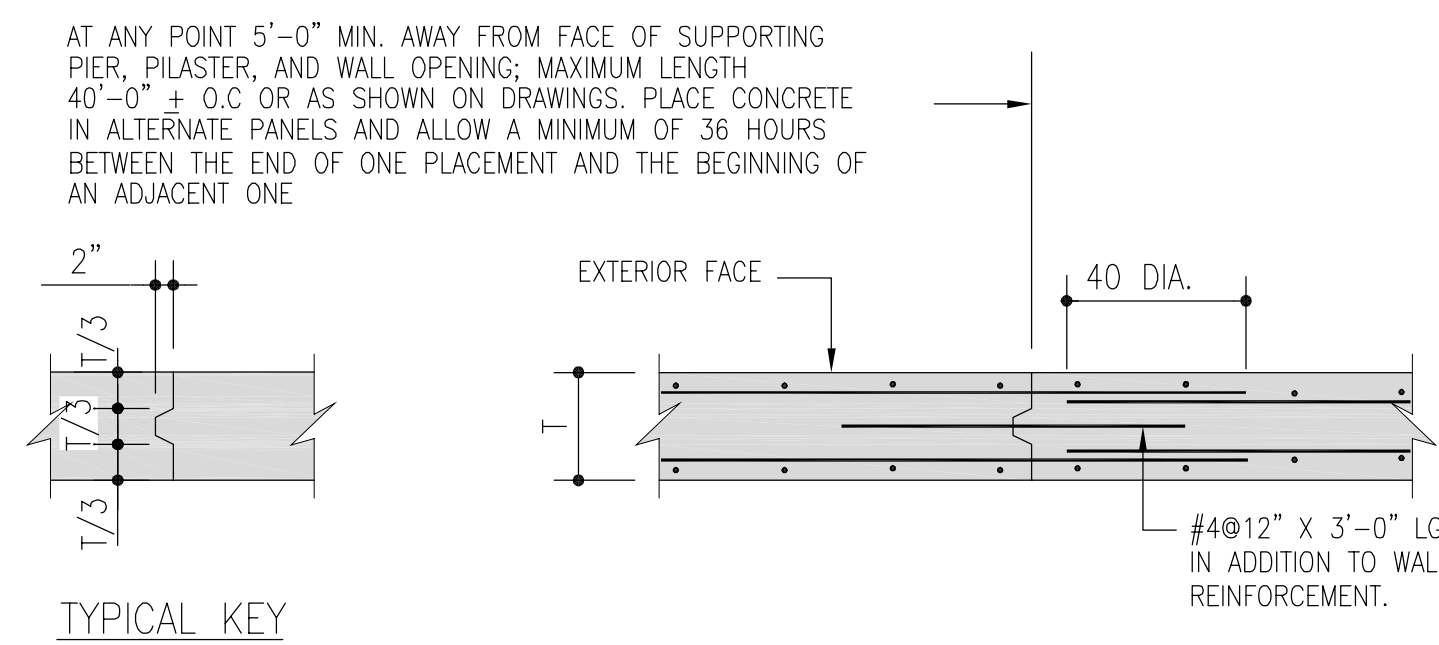
TC-5 CONSTRUCTION JOINT IN SLAB ON GRADE
3/4"=1'-0"



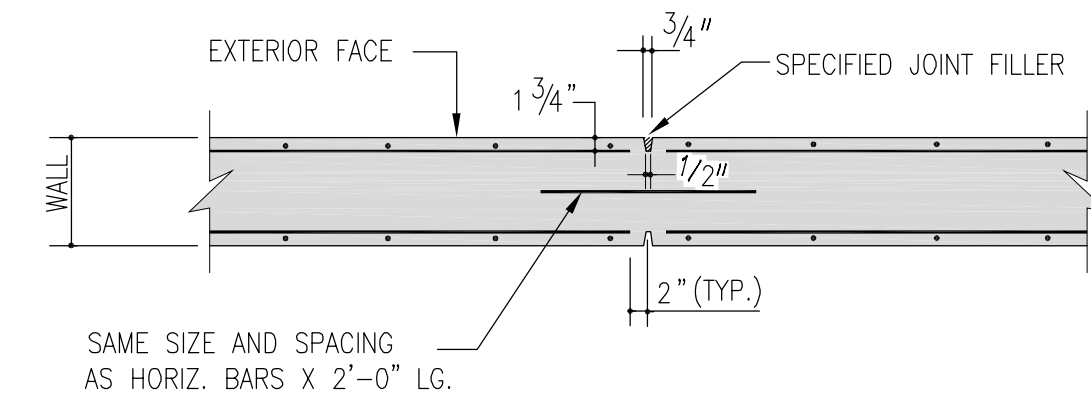
TC-3 TYPICAL C.I.P. CONCRETE COLUMN PEDESTAL
3/4"=1'-0"



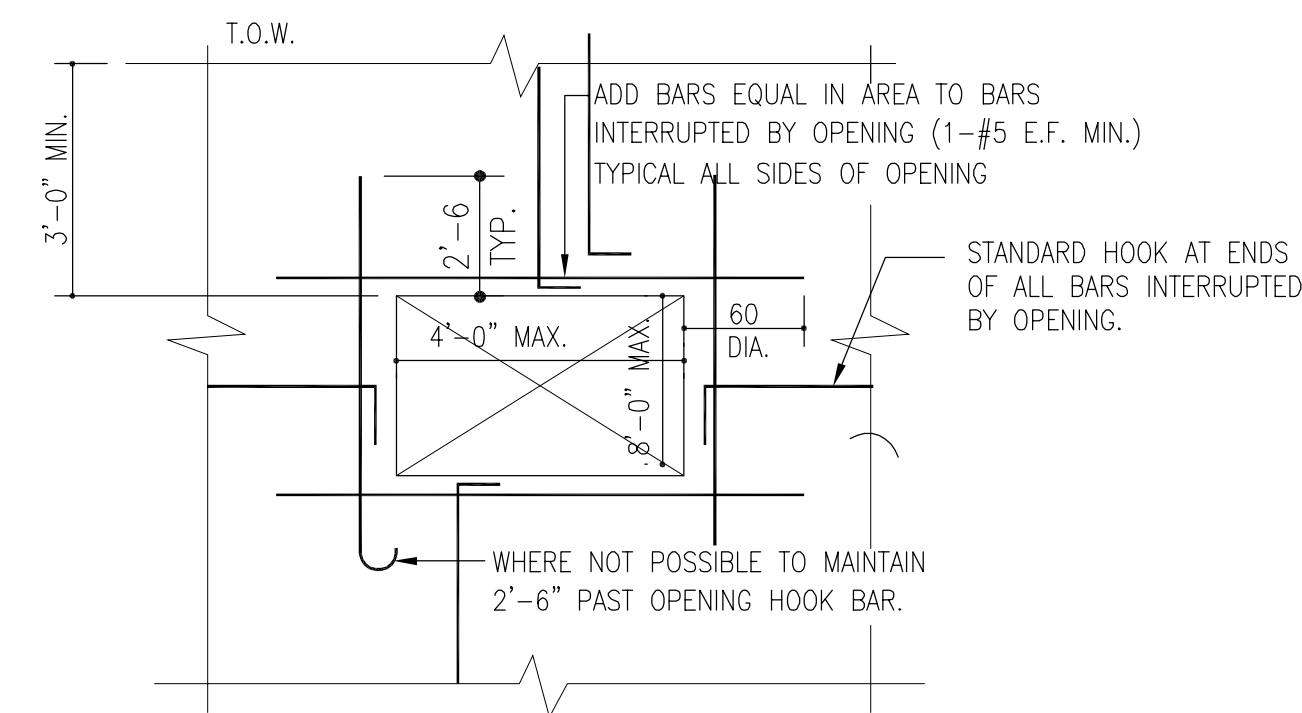
TC-6 CONTROL JOINT IN SLAB ON GRADE
3/4"=1'-0"



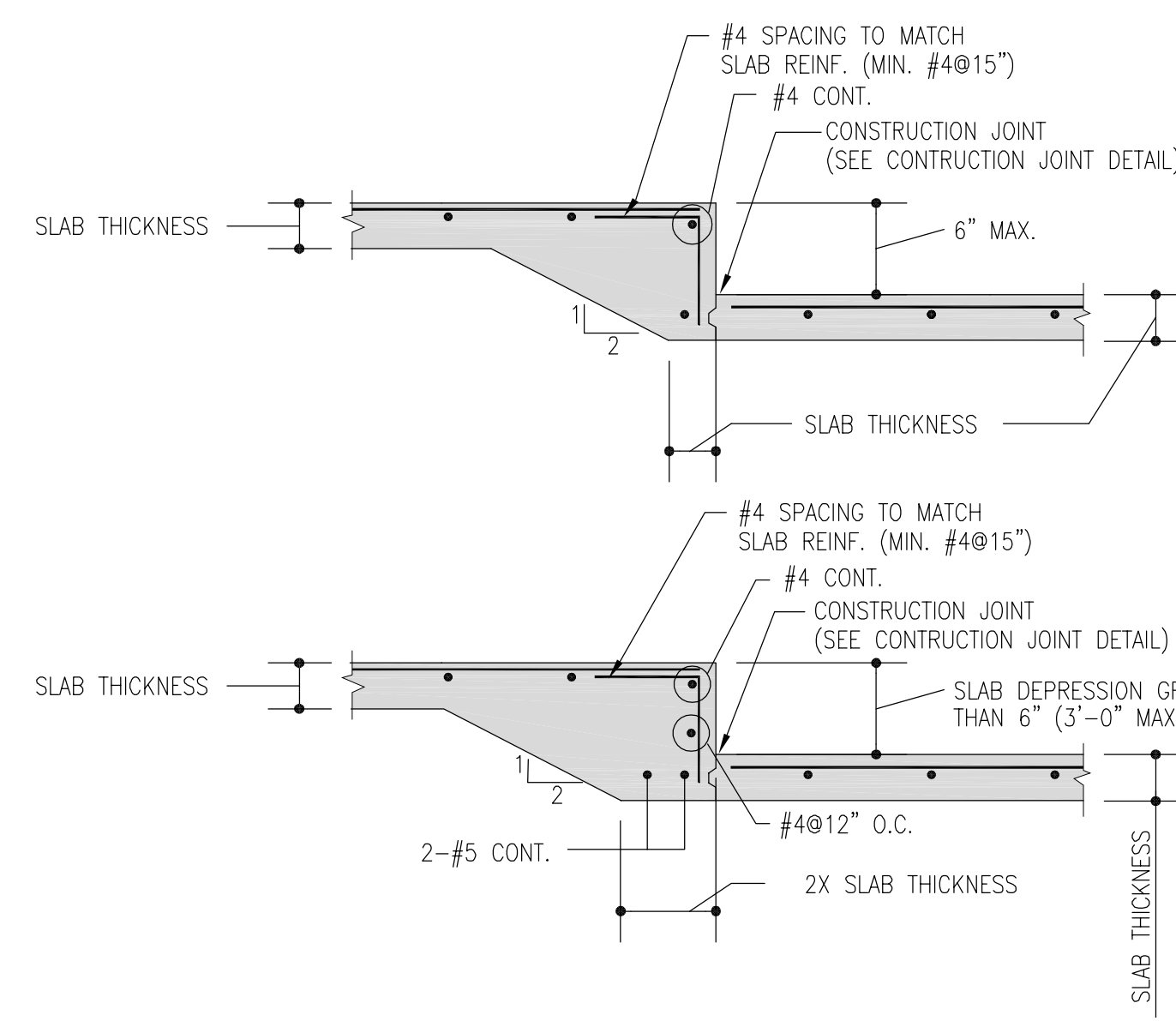
TC-7 CONSTRUCTION JOINT IN CONCRETE WALL
3/4"=1'-0"



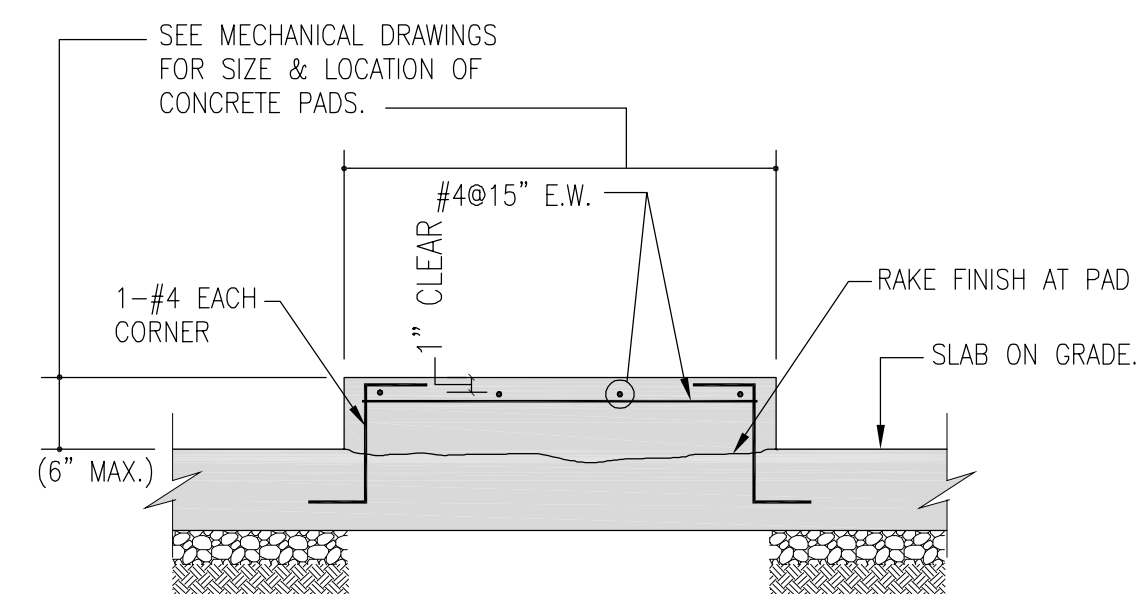
TC-8 CONTROL JOINT IN CONCRETE WALL
MAXIMUM SPACING 40'-0"
3/4"=1'-0"



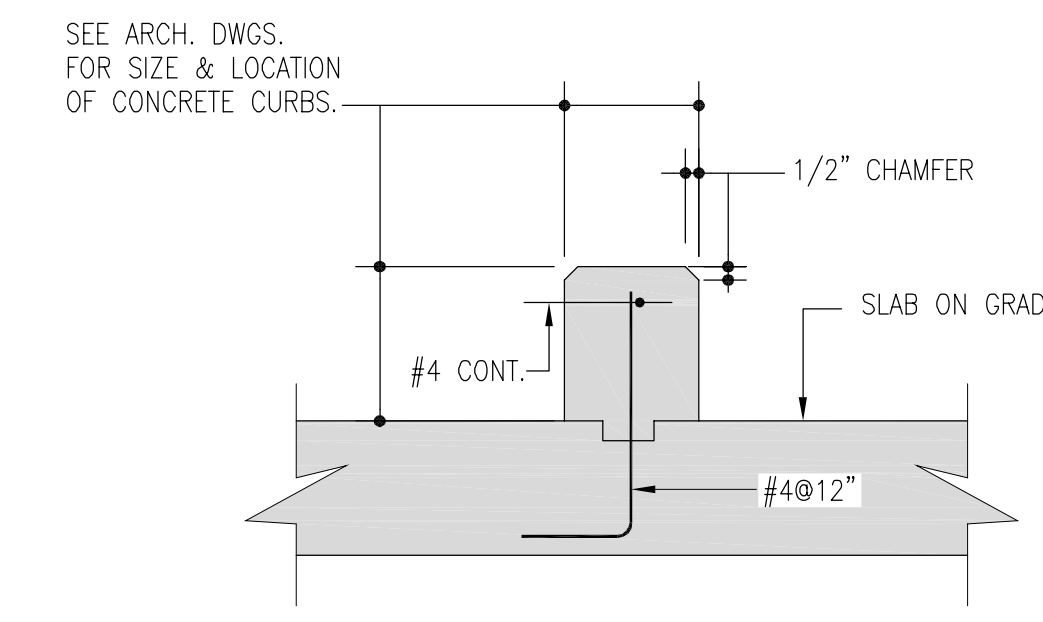
TC-9 TYPICAL REINFORCEMENT AT OPENINGS IN WALLS
3/4"=1'-0"



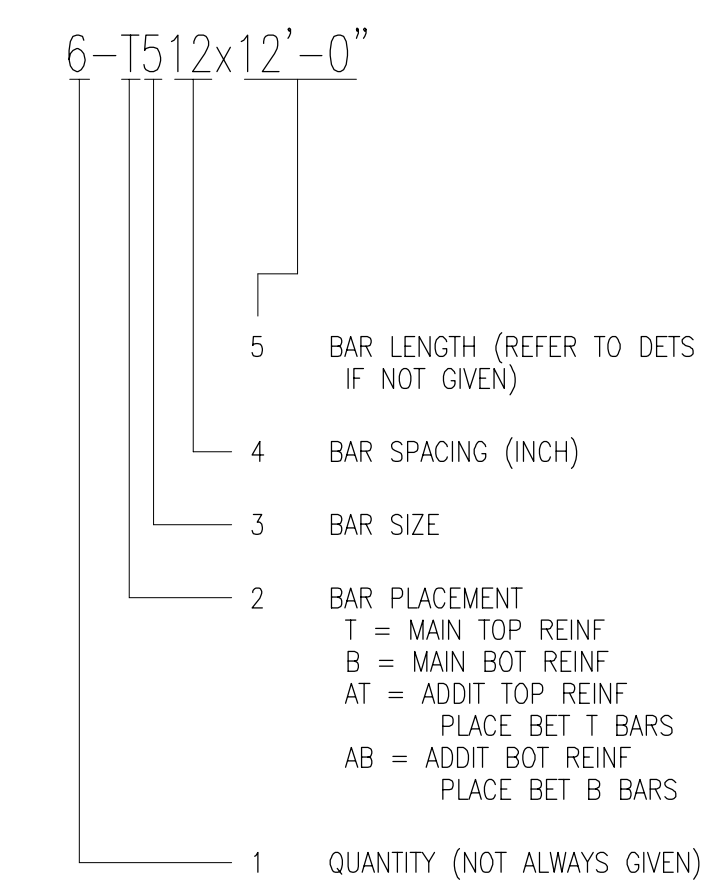
TC-10 SLAB DEPRESSION DETAILS
3/4"=1'-0"



TC-11 TYPICAL CONCRETE PAD DETAIL AT SLAB ON GRADE
3/4"=1'-0"



TC-12 CONCRETE CURB DETAIL AT SLAB ON GRADE
3/4"=1'-0"



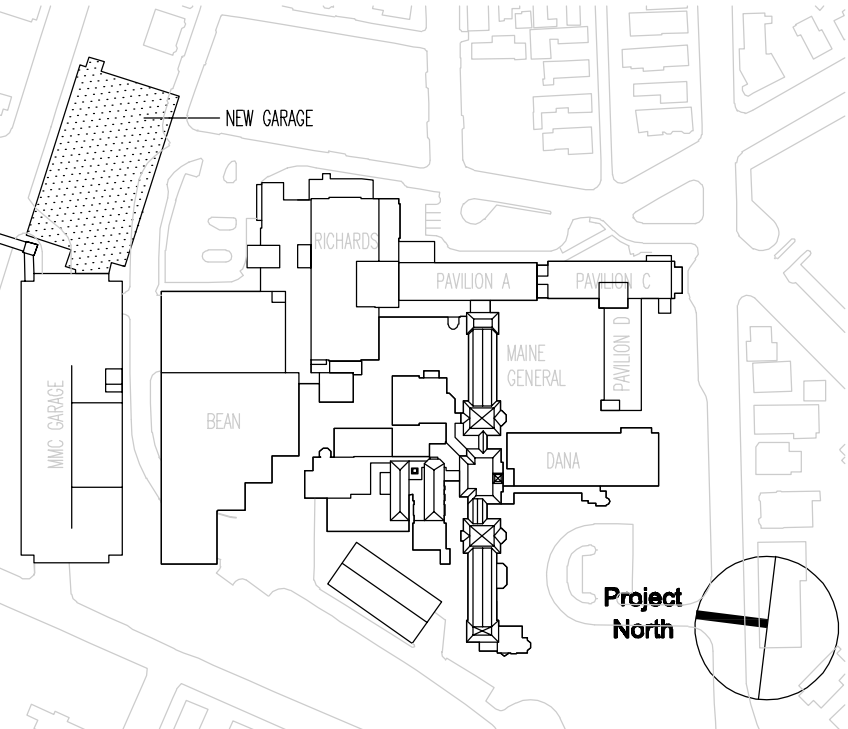
TC-13 TYPICAL REINFORCING BAR LEGEND
N.T.S.

General Notes:

SGH
Simpson Gumpertz & Heger Inc.
 Consulting Engineers
 Boston, MA 41 Bayon Street, Suite 500, Telephone: (781) 907 9000
 Building 1, Suite 500, Fax: (781) 907 9009
 Waltham, MA 02453
 San Francisco, CA The Landmark at One Market, Telephone: (415) 498 3700
 Suite 600, San Francisco, CA Fax: (415) 498 3709
 94105, Facsimile: (415) 498 3550
 Washington, DC 1885 Pileford Drive, Telephone: (301) 417 0999
 Suite 225, Rockville, MD Fax: (301) 417 9825
 20850

MARK	ISSUE DATE	DESCRIPTION
PERMIT	09/16/04	PERMIT SET
BD	05/17/04	BD SET

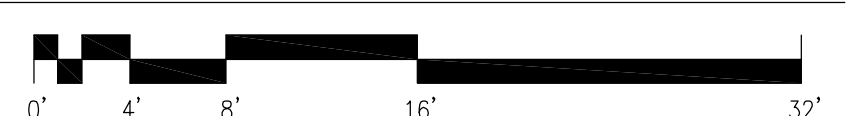
Issue Log



TRO
 ARCHITECTURE
 PLANNING
 ENGINEERING
 INTERIOR DESIGN
 The Ritchie Organization
 80 Bridge Street
 Newton, MA 02458-1154
 617-969-9400

Maine Medical Center
 Pkg E - Garage Foundation and Precast
 Portland, ME MMC Project No. 21845

Drawing Title
TYPICAL CONCRETE DETAILS
 (SHEET 1 OF 2)



Commission No.	4678	Date Issued	05/17/04
Scale	3/4"=1'-0"	Sheet Number	PKG-E S101
Drawn By	SWW	Approved By	JHT/JAZ
Checked By	S101	Checked By	S101
Copyright	© 2004	The Ritchie Organization	