

GENERAL NOTES

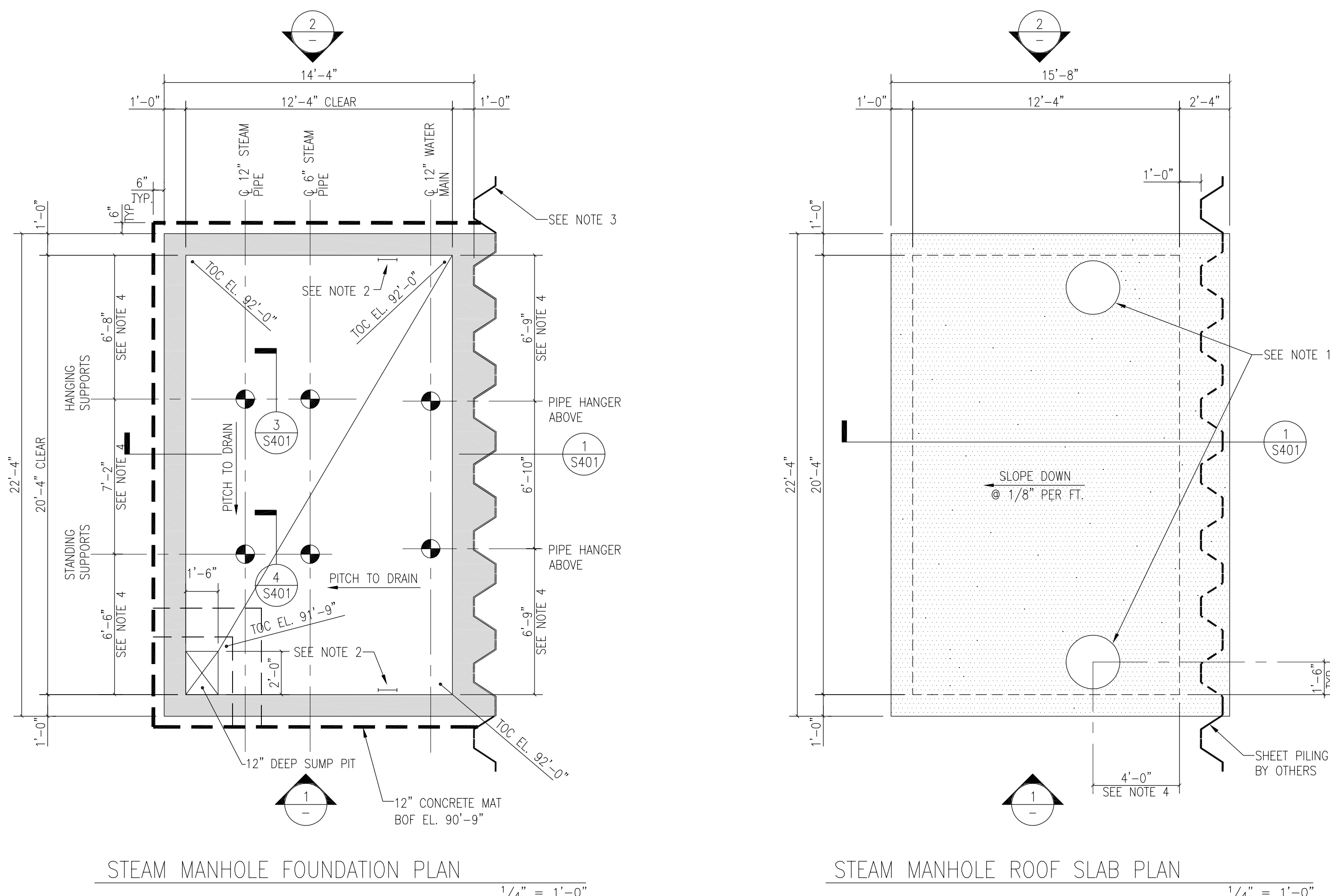
- SPECIFICATIONS
SHOP DRAWINGS
SIMILAR CONDITIONS
ELEVATIONS & DIMENSIONS
BUILDING CODE
A - DESIGN LOADS
B - FOUNDATIONS
D - CAST-IN-PLACE CONCRETE

D - CAST-IN-PLACE CONCRETE (CONTINUED)

- (221) FOOTING SUBGRADE
(222) BASE PLATE GROUING
(223) CURING COMPOUNDS
(224) SHEAR KEYS
(225) HOUSEKEEPING PADS AND CURBS
(226) EPOXY DOWELS AND ANCHORS
(227) UNDERCUT ANCHORS

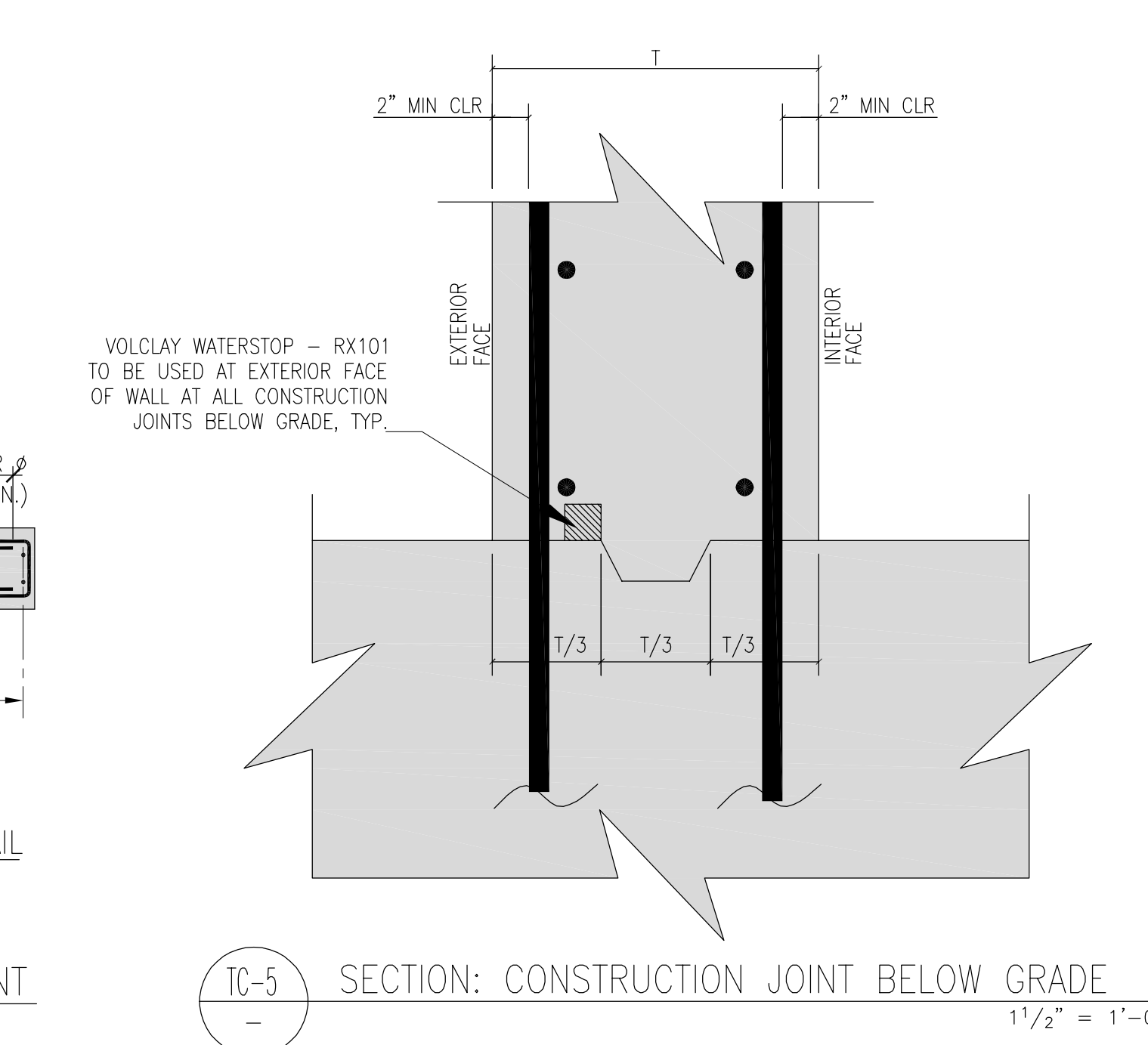
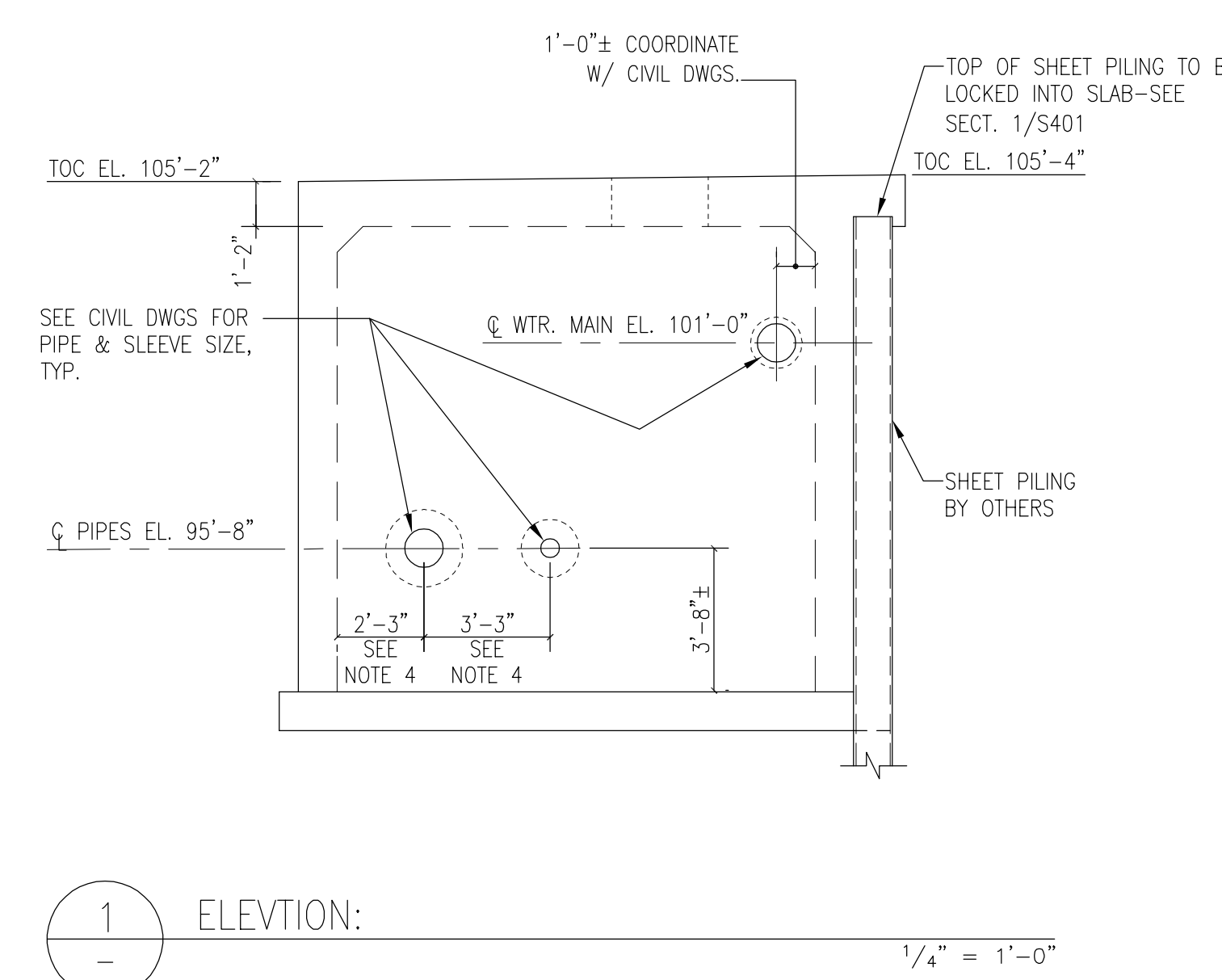
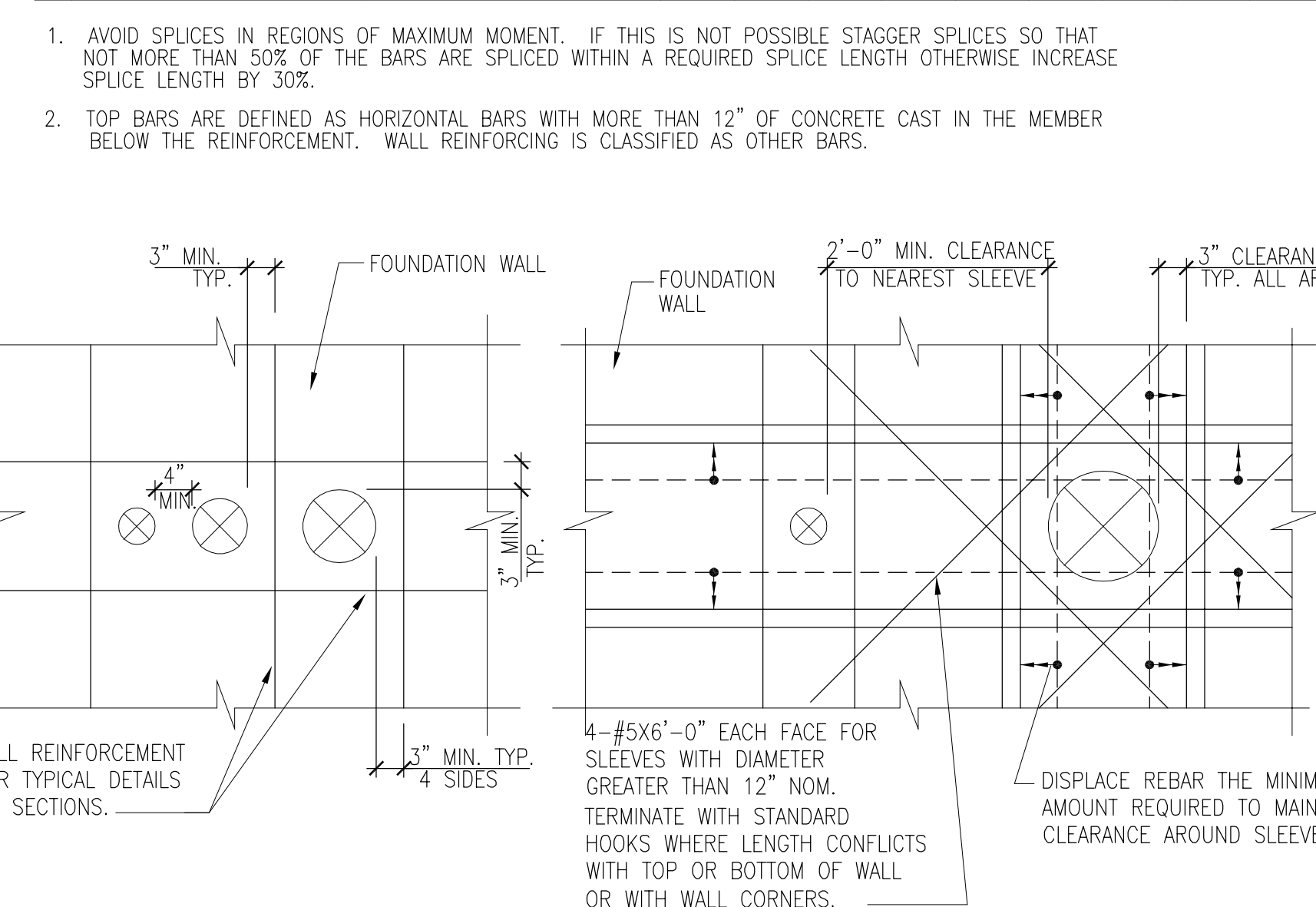
F - STRUCTURAL STEEL

- (F1) STRUCTURAL SHAPES
(F2) HOLLOW STRUCTURAL SECTIONS (HSS)
(F3) PIPE
(F4) ANCHOR BOLTS
(F5) CORROSION PROTECTION
(F6) WELDING ELECTRODES
(F7) ERECTION
(F8) PAINT
(F9) FABRICATION
(F10) STANDARD SPECIFICATIONS



MINIMUM SPICE and DEVELOPMENT LENGTH SCHEDULE

Table with 3 columns: SPICE LENGTH, TOP BARS, OTHER BARS



- GENERAL NOTES
1. PROVIDE 30" HEAVY-DUTY MANHOLE FRAME...
2. CONTRACTOR SHALL PROVIDE GALVANIZED STEEL LADDER...
3. SHEET PILING BY OTHERS...
4. CONTRACTOR SHALL COORDINATE ALL DIMENSIONS WITH MECHANICAL AND CIVIL DRAWINGS...

SGH Simpson Gumpertz & Heger Inc. Consulting Engineers
Boston, MA
San Francisco, CA
Washington, DC

Table with 3 columns: MARK, ISSUE DATE, DESCRIPTION

TRO ARCHITECTS PLANNING ENGINEERING INTERIOR DESIGN
The Ritchie Organization
80 Ridge Street
Newton, MA 02458-1154
617-969-9400

Maine Medical Center
Pkg C - Site Utilities
Portland, Maine MMC Project No. 21846
GENERAL NOTES PLANS ELEVATIONS
Commission No. 4677 Date Issued 08/31/04