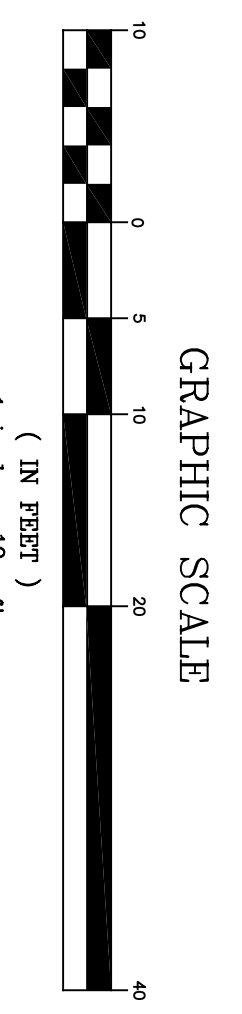


CHARLES STREET  
GROUND FLOOR  
THE 145.83

LOBBY  
THE 143.10



PAVILION A

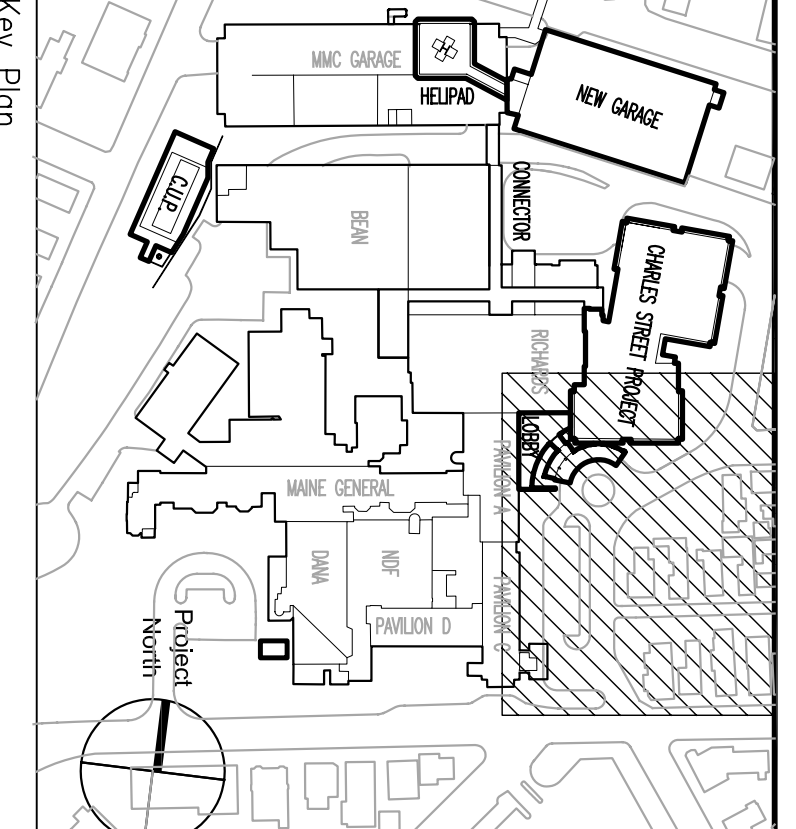
PAVILION C

RUSSELL STREET

CHARLES STREET

BRAMHALL STREET

MARK	ISSUE DATE	DESCRIPTION
PERMIT	09/18/24	PERMIT SET
ISSUE LOG	08/27/24	ISSUE SET



**TRO**  
ARCHITECTURE  
ENGINEERING  
INTERIOR DESIGN  
The Redden Organization  
60 Bridge Street  
Newport, ME 04850-4000

**Maine Medical Center**  
Pkg C - Site Utilities  
Portland, Maine  
MMC Project No. 21846

**GRADING PLAN**

08/27/24  
PKG-C  
C203