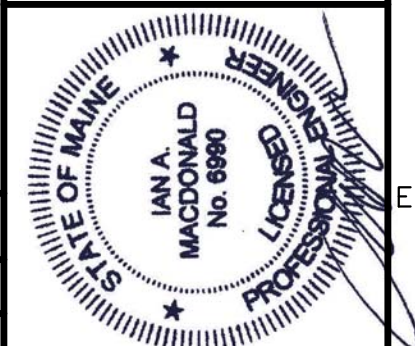


Winton Scott Architects
5 Milk Street
Portland, Maine 04101
207 774 4811
www.wintonscott.com

Architecture / Planning
Preservation Architecture
Interior Architecture

Allied Engineering
Structural Mechanical Electrical Commissioning

168 Verona Street
Portland, Maine 04103
1.207.231.2266
F.207.231.2266
www.allied-eng.com



REVISIONS	NUMBER	DATE	BY	DESCRIPTION

Date: 27 APRIL 2015
Drawn By: SCL
Checked By: IAM
Project Mgr: IAM
Project No: 14014
Cad File: 14014_M.DWG
Graphic Scale: 0

**MECHANICAL EAST TOWER OVER ALL PLAN
PENTHOUSE**
R6 Intermediate Care Unit
Richards Wing Sixth Floor
PORTLAND MAINE
© copyright 2015 Allied Engineering, Inc.

MH-101

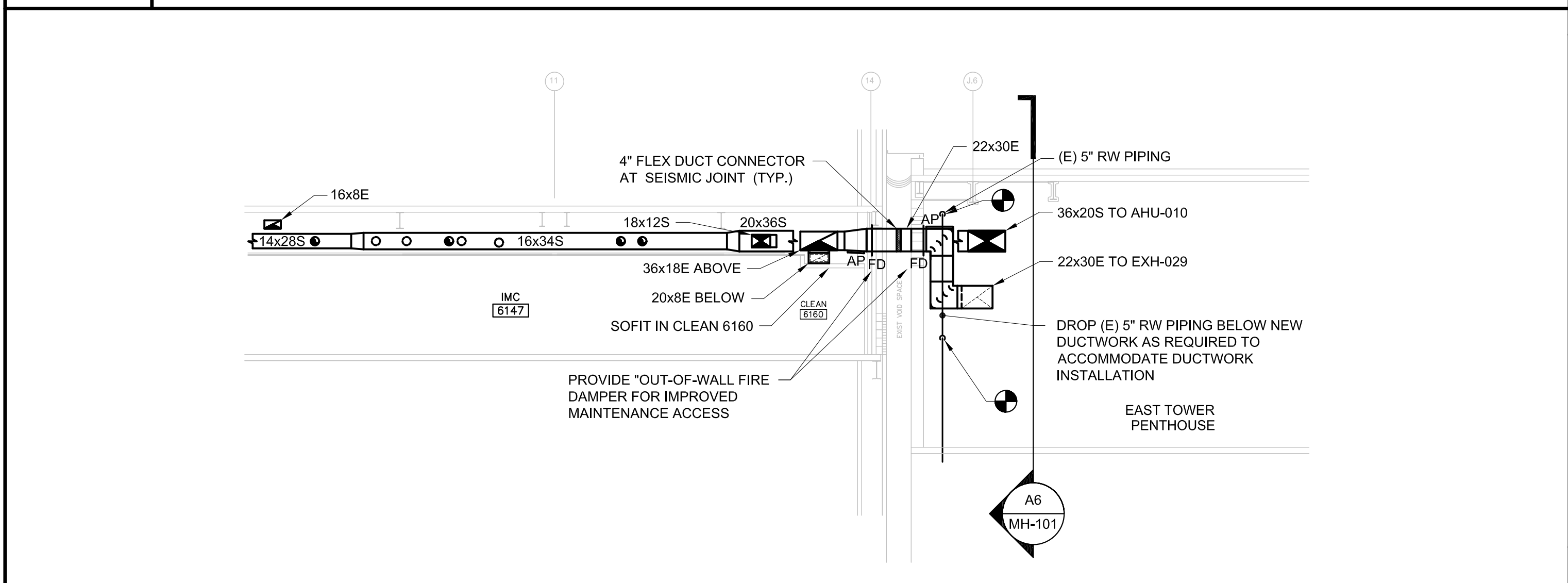
GENERAL NOTES:

1. RELOCATE EXISTING LIGHTS BELOW AHU-010 AND EXH-029.
2. RE-WORK EXISTING UNISTRUT HANGERS AS REQUIRED TO INSTALL AHU-010, EXH-029 AND DUCTWORK.

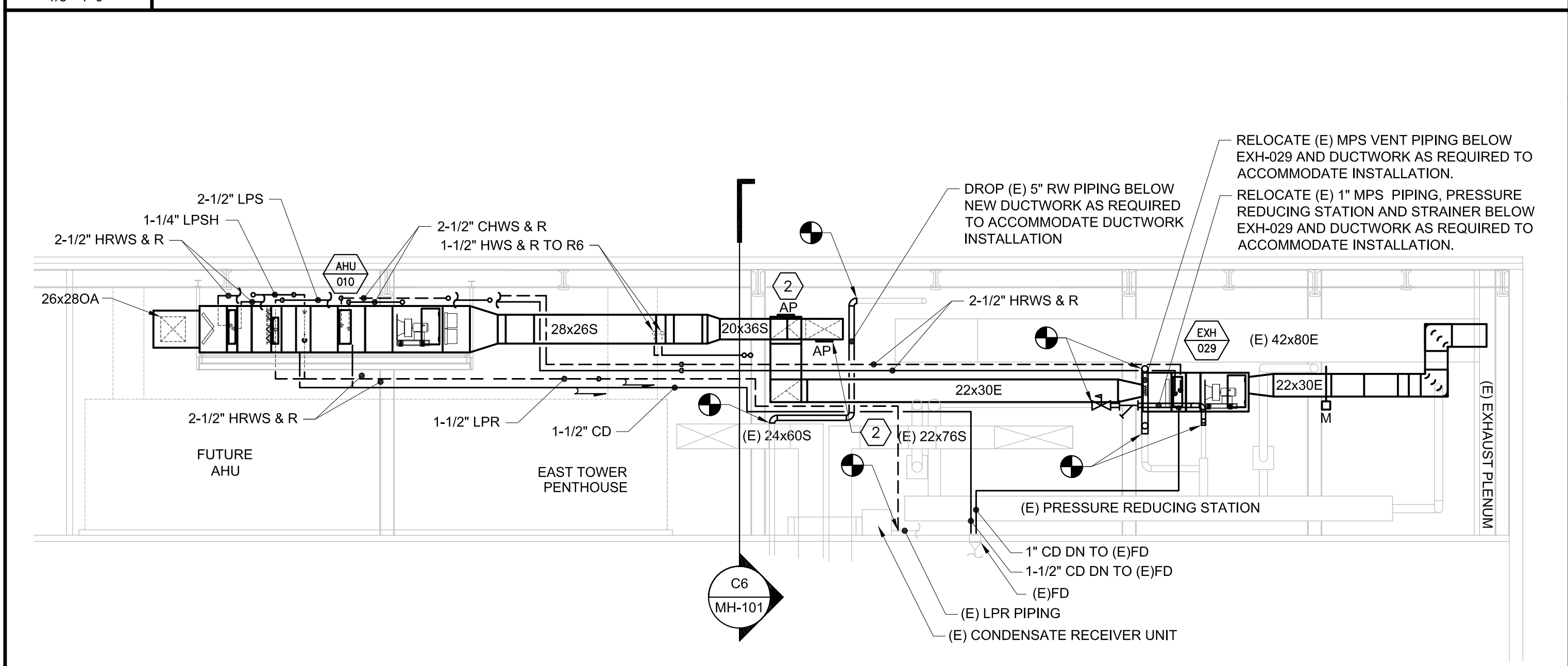
KEYED NOTES:

- 1 CONNECT TO EXISTING PIPE RISER.
- 2 ALL FIRE DAMPERS MUST BE ACCESSIBLE WITH A 24X24 MIN. ACCESS PANELS TO TEST PER JOINT COMMISSION.
- 3 1" CD PIPING DN REFER TO SECTION A6 / MH-101 FOR ROUTING TO (E) FD.

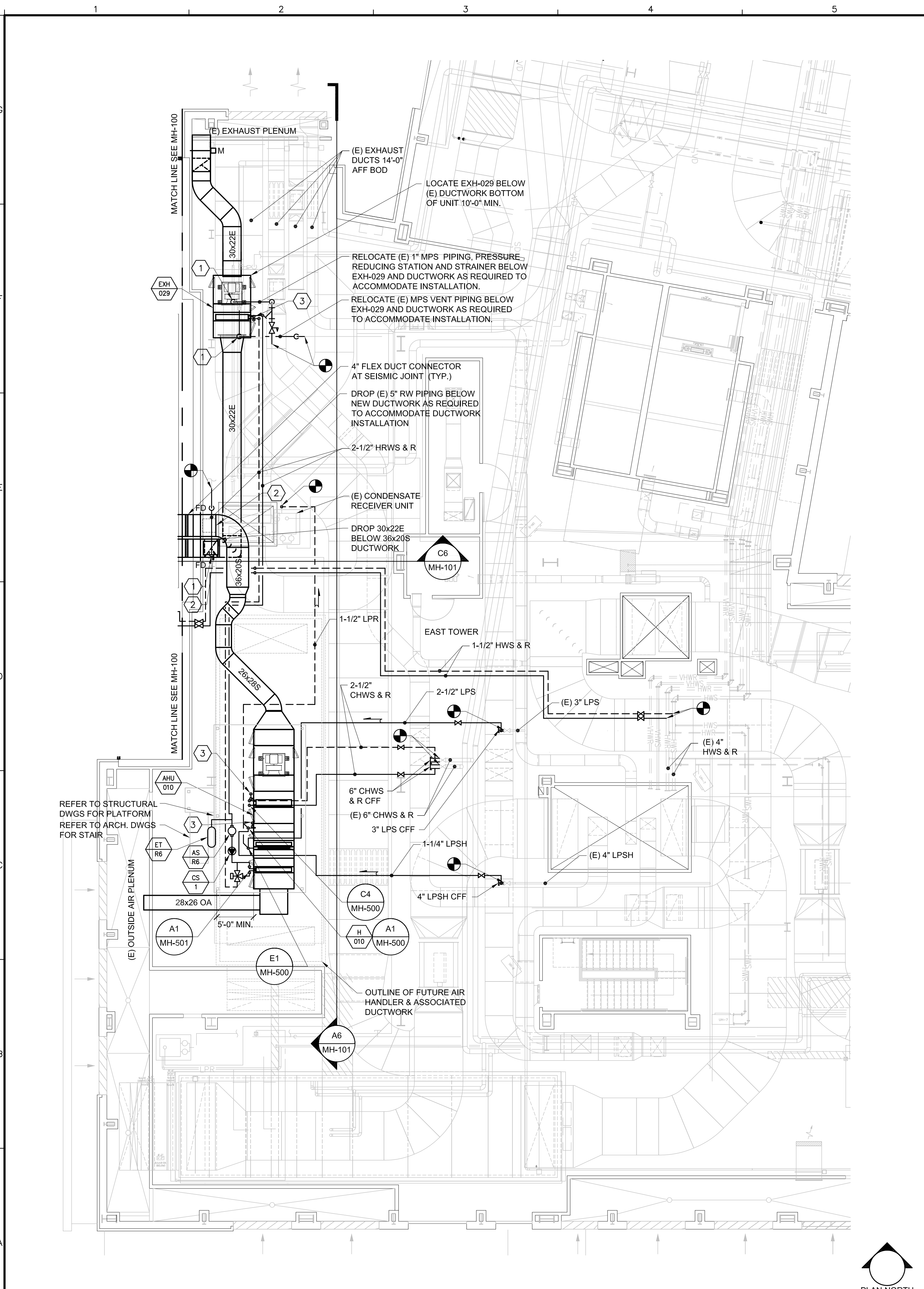
E6
MECHANICAL KEY NOTES
1/8"=1'-0"



C6
PENTHOUSE ~ SECTION
1/8"=1'-0"



A6
PENTHOUSE ~ SECTION
1/8"=1'-0"



A1
MECHANICAL EAST TOWER PART PLAN - PENTHOUSE
1/8"=1'-0"

N:\Projects\2014\14014 - MMC R6 2014 Intermediate Care Unit\00 Drawing Files\14014_M.dwg Apr 27, 2015 - 11:24am